



Nevada Water Supply Outlook Report

May, 2014



**Looking west from Carpenter Ridge, near Independence Lake, CA.
May 7, 2014**

Photo by Evan Smith, NRCS

Water Supply Outlook Reports

Federal - State - Private Cooperative Snow Surveys

For more water supply and resource management information, contact:

Snow Survey Staff, 245 N Jimmy Doolittle Rd, SLC Utah, 84116 - Phone: (801)524-5213 x116
NRCS Nevada, 1365 Corporate Blvd., Reno, NV 89502 – Phone: (775)857-8500 x152
Internet Address: <http://www.nrcs.usda.gov/wps/portal/nrcs/main/nv/snow/>

How forecasts are made

Most of the annual streamflow in the western United States originates as snowfall that has accumulated in the mountains during the winter and early spring. As the snowpack accumulates, hydrologists estimate the runoff that will occur when it melts. Measurements of snow water equivalent at selected manual snowcourses and automated SNOTEL sites, along with precipitation, antecedent streamflow, and indices of the El Niño / Southern Oscillation are used in computerized statistical and simulation models to prepare runoff forecasts. These forecasts are coordinated between hydrologists in the Natural Resources Conservation Service and the National Weather Service. Unless otherwise specified, all forecasts are for flows that would occur naturally without any upstream influences.

Forecasts of any kind, of course, are not perfect. Streamflow forecast uncertainty arises from three primary sources: (1) uncertain knowledge of future weather conditions, (2) uncertainty in the forecasting procedure, and (3) errors in the data. The forecast, therefore, must be interpreted not as a single value but rather as a range of values with specific probabilities of occurrence. The middle of the range is expressed by the 50% exceedance probability forecast, for which there is a 50% chance that the actual flow will be above, and a 50% chance that the actual flow will be below, this value. To describe the expected range around this 50% value, four other forecasts are provided, two smaller values (90% and 70% exceedance probability) and two larger values (30%, and 10% exceedance probability). For example, there is a 90% chance that the actual flow will be more than the 90% exceedance probability forecast. The others can be interpreted similarly.

The wider the spread among these values, the more uncertain the forecast. As the season progresses, forecasts become more accurate, primarily because a greater portion of the future weather conditions become known; this is reflected by a narrowing of the range around the 50% exceedance probability forecast. Users should take this uncertainty into consideration when making operational decisions by selecting forecasts corresponding to the level of risk they are willing to assume about the amount of water to be expected. If users anticipate receiving a lesser supply of water, or if they wish to increase their chances of having an adequate supply of water for their operations, they may want to base their decisions on the 90% or 70% exceedance probability forecasts, or something in between. On the other hand, if users are concerned about receiving too much water (for example, threat of flooding), they may want to base their decisions on the 30% or 10% exceedance probability forecasts, or something in between. Regardless of the forecast value users choose for operations, they should be prepared to deal with either more or less water. (Users should remember that even if the 90% exceedance probability forecast is used, there is still a 10% chance of receiving less than this amount.) By using the exceedance probability information, users can easily determine the chances of receiving more or less water.

The U.S. Department of Agriculture (USDA) prohibits discrimination against its customers. If you believe you experienced discrimination when obtaining services from USDA, participating in a USDA program, or participating in a program that receives financial assistance from USDA, you may file a complaint with USDA. Information about how to file a discrimination complaint is available from the Office of the Assistant Secretary for Civil Rights. USDA prohibits discrimination in all its programs and activities on the basis of race, color, national origin, age, disability, and where applicable, sex (including gender identity and expression), marital status, familial status, parental status, religion, sexual orientation, political beliefs, genetic information, reprisal, or because all or part of an individual's income is derived from any public assistance program. (Not all prohibited bases apply to all programs.) To file a complaint of discrimination, complete, sign, and mail a program discrimination complaint form, available at any USDA office location or online at www.ascr.usda.gov, or write to: USDA Office of the Assistant Secretary for Civil Rights 1400 Independence Avenue, SW, Washington, DC 20250-9410. Or call toll free at (866) 632-9992 (voice) to obtain additional information, the appropriate office or to request documents. Individuals who are deaf, hard of hearing, or have speech disabilities may contact USDA through the Federal Relay service at (800) 877-8339 or (800) 845-6136 (in Spanish). USDA is an equal opportunity provider, employer, and lender. Persons with disabilities who require alternative means for communication of program information (e.g., Braille, large print, audiotape, etc.) should contact USDA's TARGET Center at (202) 720-2600 (voice and TDD).

STATE OF NEVADA GENERAL OUTLOOK

May 1, 2014

SUMMARY

April 2014 was yet another dry month for western Nevada with observed precipitation accumulation in the 52% to 63% of average range. Eastern Nevada was slightly better with monthly totals in the 56% to 92% range. This brings the seasonal accumulation to a range of 55% to about 89% statewide; not enough to improve snowpack conditions in any area of the state. Western Nevada snowpacks range from 20% to 34% of normal. Snowpacks in eastern Nevada are in only marginally better condition ranging from 43% to near 62% of normal. Below normal snowpacks tend to melt earlier and faster, producing lower peak flows and much lower than normal stream flow. Reservoirs across Nevada increased storage slightly over the past month - though the gains were likely due to conservative dam operations rather than from precipitation events. In summary, dry and warm conditions are likely to persist, snowpacks are likely to continue melting quickly producing much lower than average stream flow and water shortages may be common. Prepare for limited water allocations and extremely high fire danger, both occurring earlier than typical, even for a poor snow year.

SNOWPACK

May first snowpack as measured by the NRCS SNOTEL system ranges from 20% to 34% of normal in western Nevada/Sierras, greatly reduced from last month, indicative of the early melt seen in April. Eastern Nevada ranges from 43% to 62% of normal. At this point in the snow season, melt will certainly dominate all processes and improvement in snowpack conditions is nearly impossible. See the following page for a map displaying the most up-to-date conditions at publication time.

PRECIPITATION

Mountain precipitation during April was poor, with only 52% to 63% of average in western Nevada and 56% to 92% of average in eastern Nevada which brings the seasonal accumulation (Oct-Apr) to 55% to 89% across the state. See page five for a map displaying the most up-to-date conditions at publication time.

SOIL MOISTURE

Soil Moisture continues to climb as snowmelt continues to saturate the soil. Most basins throughout Nevada remain below or near average conditions, with exceptionally dry conditions within the Walker Basin as well as the Eastern Nevada Basin. Soil moisture has likely reached its yearly maximum and will begin to decline soon. This early season drying of soils increases the length and severity of the upcoming wildfire season as well as stress on flora.

RESERVOIRS

Storage in Nevada's key irrigation reservoirs is very low, ranging from 5% to 43% of capacity, with Lake Mohave near capacity at 94%. Even as reservoir operators hold back as much water as possible, poor runoff will not significantly improve storage over the next several months. Agricultural users should prepare for poor water supply for irrigation.

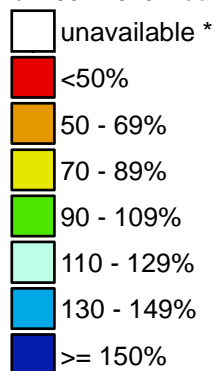
STREAMFLOW

Snowmelt stream flows are forecast to be much below normal in western Nevada and below normal in eastern Nevada. Poor runoff in April, typically a major contributor to overall runoff, was extremely low causing forecasts to be adjusted downward accordingly. Refer to the basin forecast tables for specific numbers.

Nevada/California SNOTEL Current Snow Water Equivalent (SWE) % of Normal

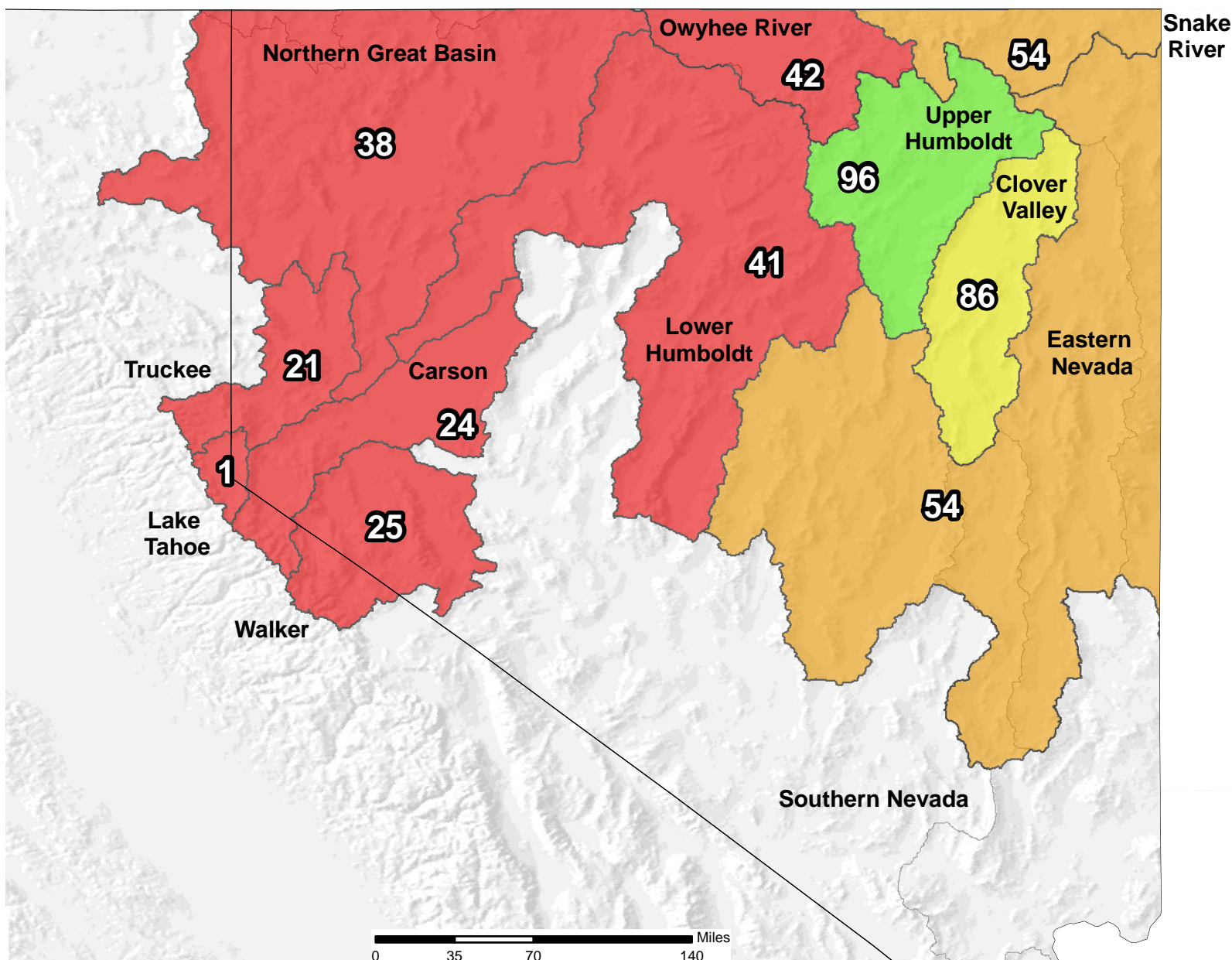
May 08, 2014

Current Snow Water Equivalent Basin-wide Percent of 1981-2010 Median



* Data unavailable at time of posting or measurement is not representative at this time of year

Provisional data subject to revision



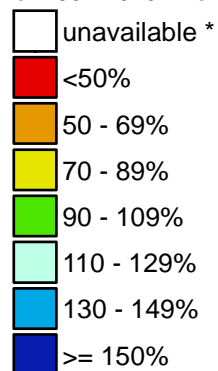
The current snow water equivalent percent of normal represents the snow water equivalent found at selected SNOTEL sites in or near the basin compared to the average value for those sites on this day. Data based on the first reading of the day (typically 00:00).

Prepared by:
USDA/NRCS National Water and Climate Center
Portland, Oregon
<http://www.wcc.nrcs.usda.gov>

Nevada/California SNOTEL Water Year (Oct 1) to Date Precipitation % of Normal

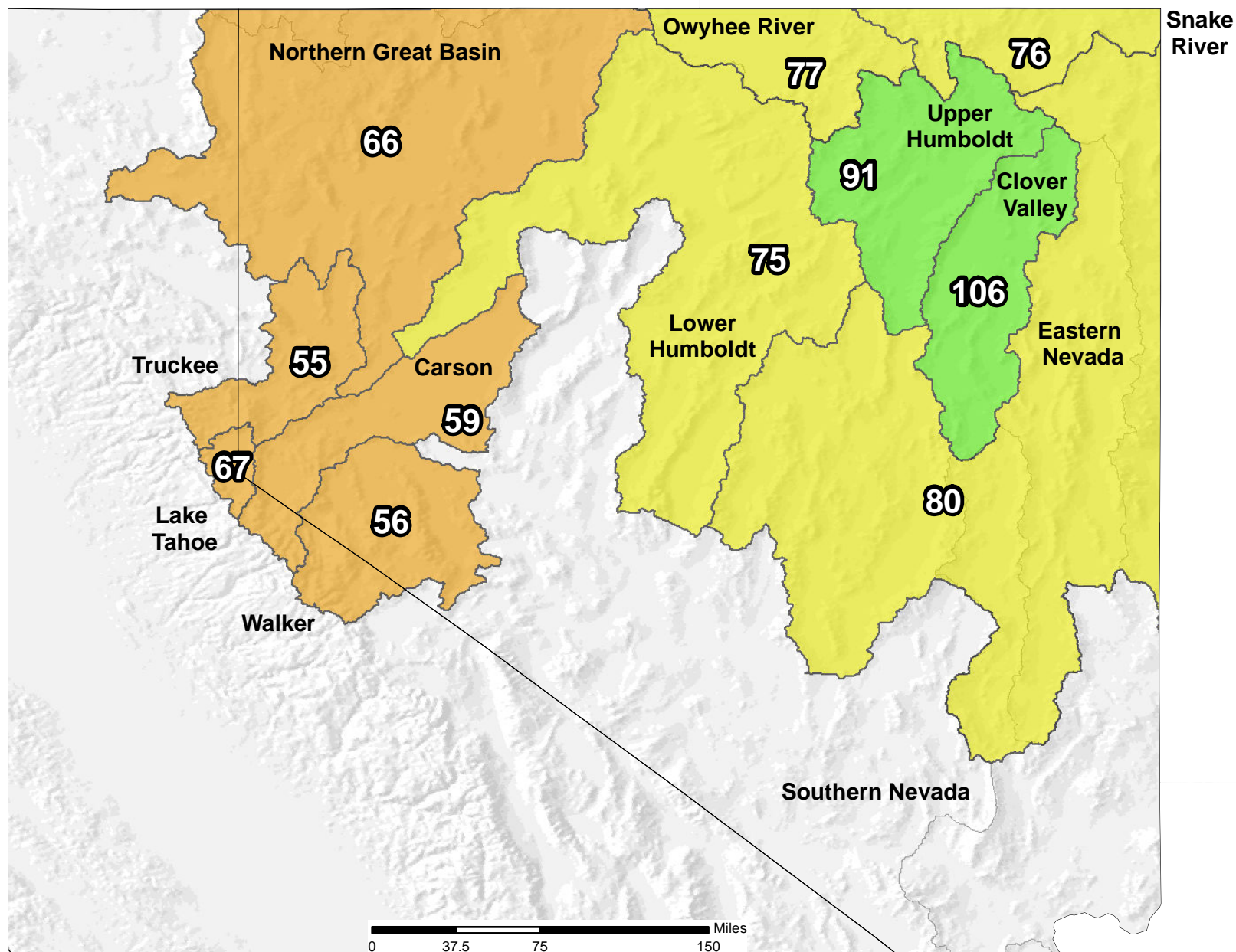
May 08, 2014

Water Year (Oct 1)
to Date Precipitation
Basin-wide Percent
of 1981-2010 Average



* Data unavailable
at time of posting
or measurement
is not representative
at this time of year

Provisional data
subject to revision



The water year to date precipitation percent of normal represents the accumulated precipitation found at selected SNOTEL sites in or near the basin compared to the average value for those sites on this day. Data based on the first reading of the day (typically 00:00).

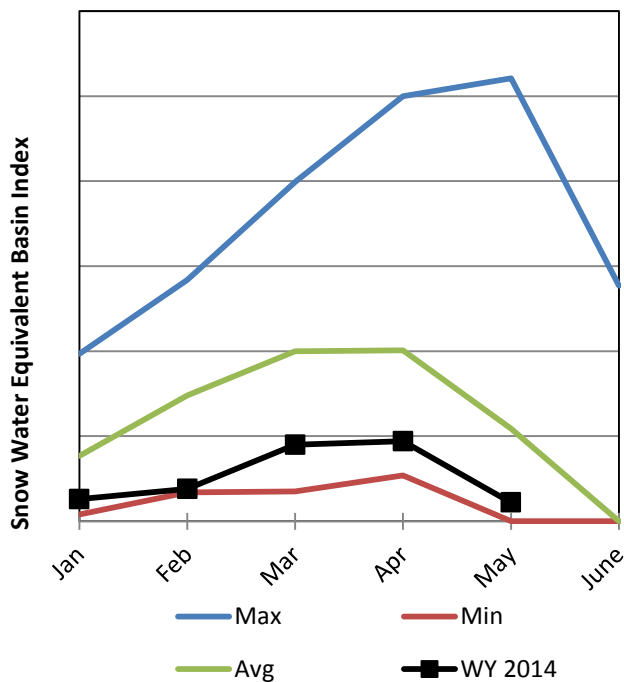
Prepared by:
USDA/NRCS National Water and Climate Center
Portland, Oregon
<http://www.wcc.nrcs.usda.gov>

Lake Tahoe Basin

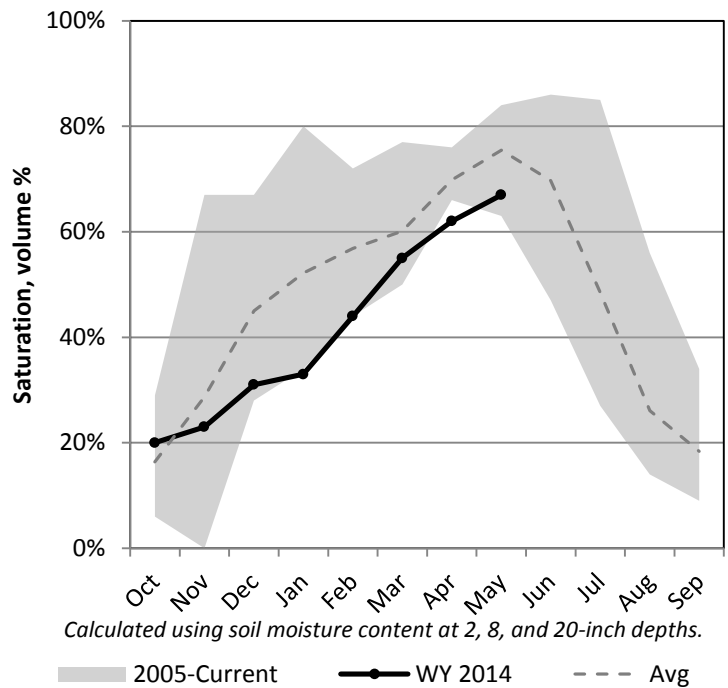
5/1/2014

Snowpack in the Lake Tahoe Basin is much below average at 20% of normal, compared to 4% last year. Precipitation in April was much below average at 63%, which brings the seasonal accumulation (Oct-Apr) to 66% of average. Soil moisture is at 67% compared to 70% last year. Reservoir storage is at 10% of capacity, compared to 52% last year. Forecast streamflow volumes range from 13% to 31% of average.

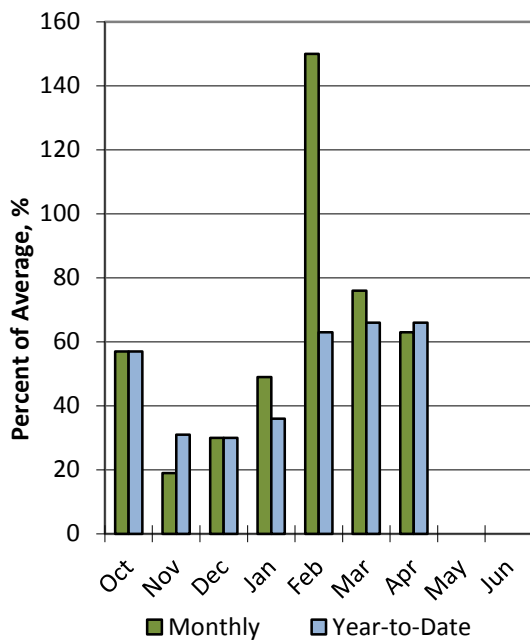
Snowpack



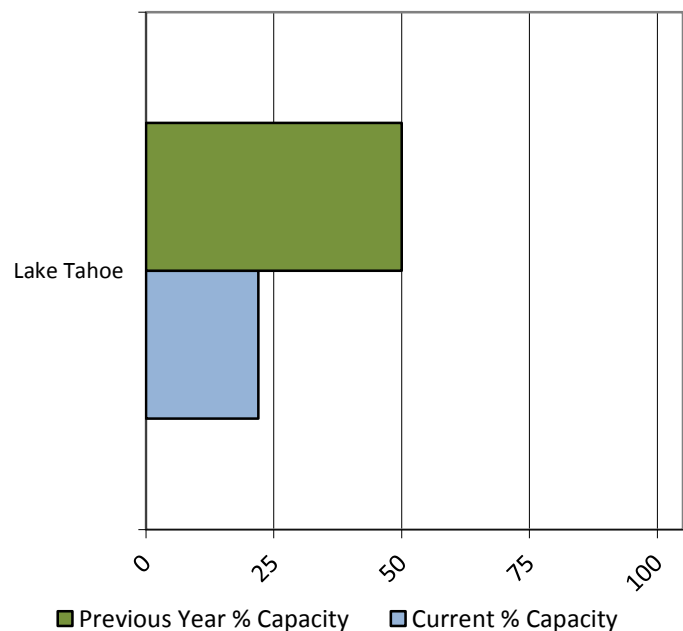
Soil Moisture



Precipitation



Reservoir Storage



Lake Tahoe
Streamflow Forecasts - May 1, 2014

Lake Tahoe	Forecast Period	Forecast Exceedance Probabilities for Risk Assessment Chance that actual volume will exceed forecast						30yr Avg (KAF)
		90% (KAF)	70% (KAF)	50% (KAF)	% Avg	30% (KAF)	10% (KAF)	
Marlette Lake Inflow (ac-ft)	APR-JUL	-447	-151	50	5%	251	547	911
	MAY-JUL	-441	-160	30	5%	220	501	630
Lake Tahoe Rise Gates Closed (ft) ¹	APR-HIGH	0.013	0.08	0.17	13%	0.27	0.48	1.31
	MAY-HIGH	0.001	0.011	0.03	3%	0.12	0.32	1.08

1) 90% and 10% exceedance probabilities are actually 95% and 5%
2) Forecasts are for unimpaired flows. Actual flow will be dependent on management of upstream reservoirs and diversions
3) Median value used in place of average

Reservoir Storage End of April, 2014	Current (KAF)	Last Year (KAF)	Average (KAF)	Capacity (KAF)
LAKE TAHOE	161.5	374.6	334.7	744.6
Basin-wide Total	161.5	374.6	334.7	744.6
# of reservoirs	1	1	1	1

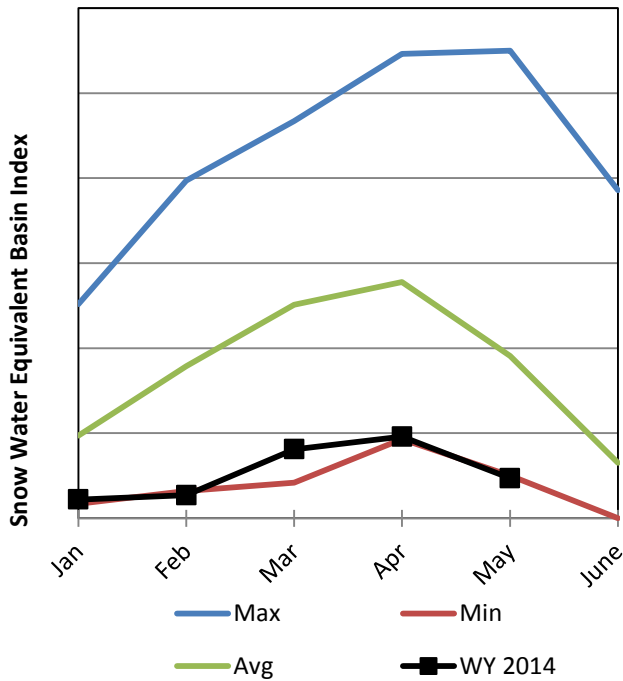
Watershed Snowpack Analysis May 1, 2014	# of Sites	% Median	Last Year % Median
Lake Tahoe Basin	8	20%	4%

Truckee River Basin

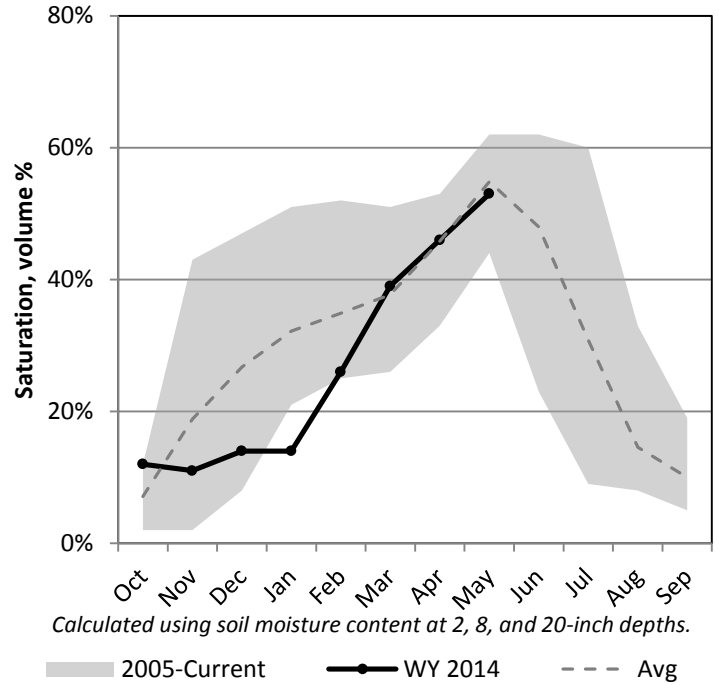
5/1/2014

Snowpack in the Truckee River Basin is much below average at 25% of normal, compared to 37% last year. Precipitation in April was much below average at 57%, which brings the seasonal accumulation (Oct-Apr) to 55% of average. Soil moisture is at 53% compared to 55% last year. Reservoir storage is at 39% of capacity, compared to 68% last year. Forecast streamflow volumes range from 8% to 10% of average.

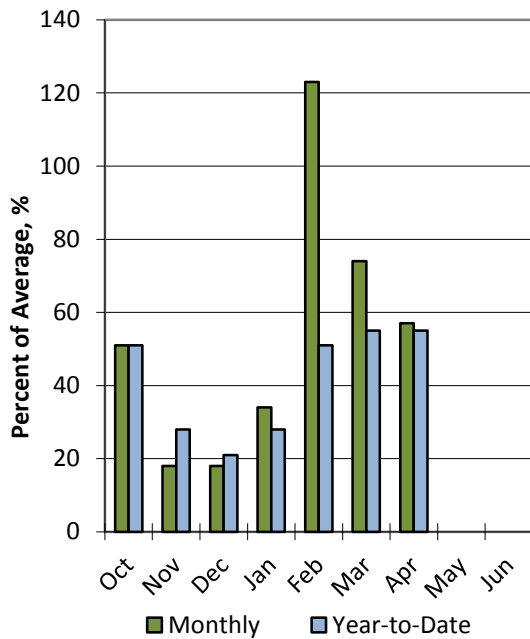
Snowpack



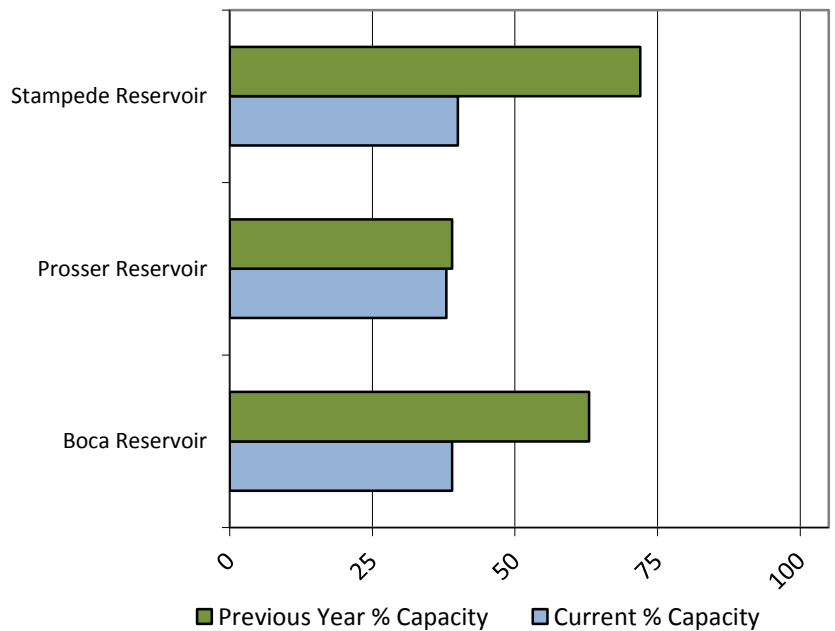
Soil Moisture



Precipitation



Reservoir Storage



Truckee River Streamflow Forecasts - May 1, 2014

Forecast Exceedance Probabilities for Risk Assessment Chance that actual volume will exceed forecast

Truckee River	Forecast Period	90% (KAF)	70% (KAF)	50% (KAF)	% Avg	30% (KAF)	10% (KAF)	30yr Avg (KAF)
Sagehen Ck nr Truckee	APR-JUL	0.76	0.84	0.9	16%	0.96	1.06	5.6
	MAY-JUL	0.32	0.37	0.4	10%	0.44	0.5	4.2
L Truckee R ab Boca Reservoir	APR-JUL	0.8	4.8	16	20%	47	93	80
	MAY-JUL	0.63	3.8	12	19%	42	85	63
Truckee R at Farad	APR-JUL	2.6	35	64	25%	93	136	260
	MAY-JUL	1.93	17.1	42	22%	67	104	193
Steamboat Ck at Steamboat	APR-JUL	0.18	0.33	0.62	8%	1.09	2.2	7.9
	MAY-JUL	0.06	0.21	0.5	8%	0.97	2.08	6.1
Galena Ck at Galena Ck State Pk	APR-JUL	0.08	0.53	1.49	34%	1.82	2.4	4.37
	MAY-JUL	0.14	0.77	1.2	33%	1.63	2.3	3.65
Pyramid Lake Elevation Change (ft) ¹	LOW-HIGH	-3.3	-1.57	-0.81	-48%	-0.04	1.64	1.7

1) 90% and 10% exceedance probabilities are actually 95% and 5%

2) Forecasts are for unimpaired flows. Actual flow will be dependent on management of upstream reservoirs and diversions

3) Median value used in place of average

Reservoir Storage End of April, 2014	Current (KAF)	Last Year (KAF)	Average (KAF)	Capacity (KAF)
BOCA RESERVOIR,CA	16.1	25.7	27.4	40.9
PROSSER RESERVOIR,CA	10.9	11.2	14.3	28.6
STAMPEDE RESERVOIR,CA	89.7	163.9	157.6	226.5
Basin-wide Total	116.7	200.8	199.3	296.0
# of reservoirs	3	3	3	3

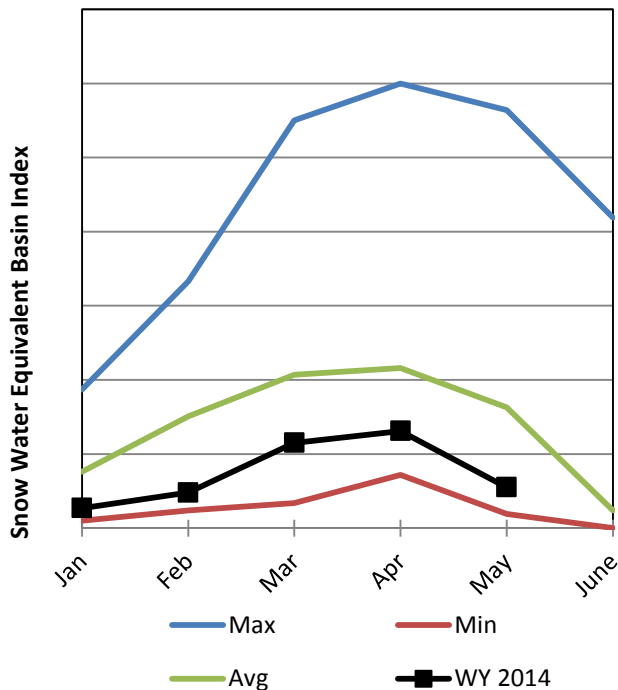
Watershed Snowpack Analysis May 1, 2014	# of Sites	% Median	Last Year % Median
Truckee River Basin	11	20%	29%
Little Truckee River	3	39%	67%
Sage Hen Creek	3	39%	67%
Galena Creek	1	22%	49%
Steamboat Drainage	1	22%	49%
Pyramid Lake	19	20%	22%

Carson River Basin

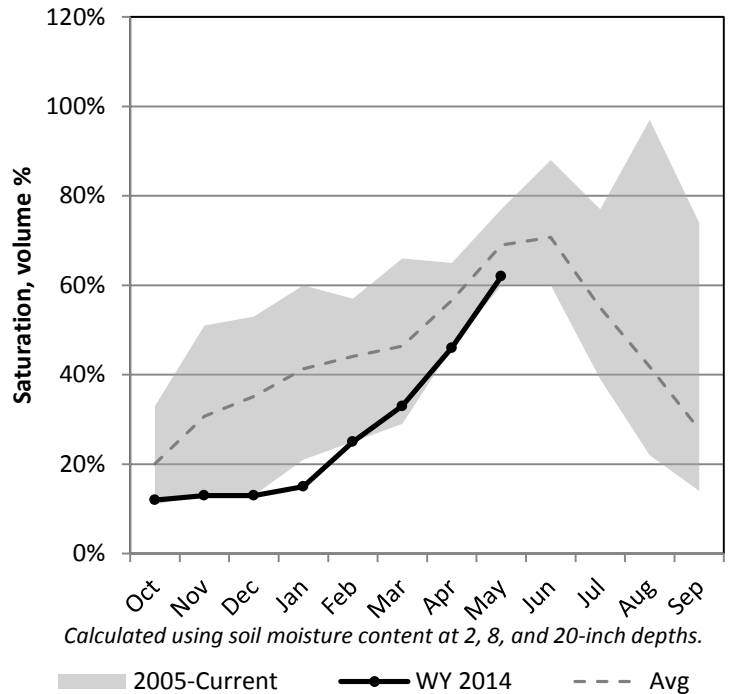
5/1/2014

Snowpack in the Carson River Basin is much below average at 34% of normal, compared to 25% last year. Precipitation in April was much below average at 52%, which brings the seasonal accumulation (Oct-Apr) to 59% of average. Soil moisture is at 62% compared to 70% last year. Reservoir storage is at 28% of capacity, compared to 41% last year. Forecast streamflow volumes range from 6% to 44% of average.

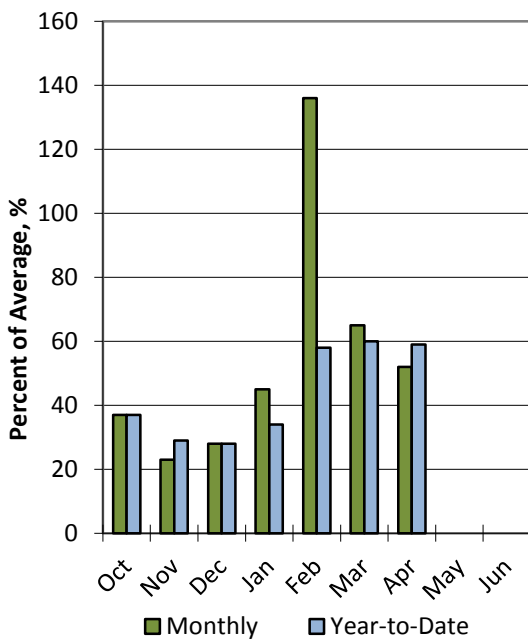
Snowpack



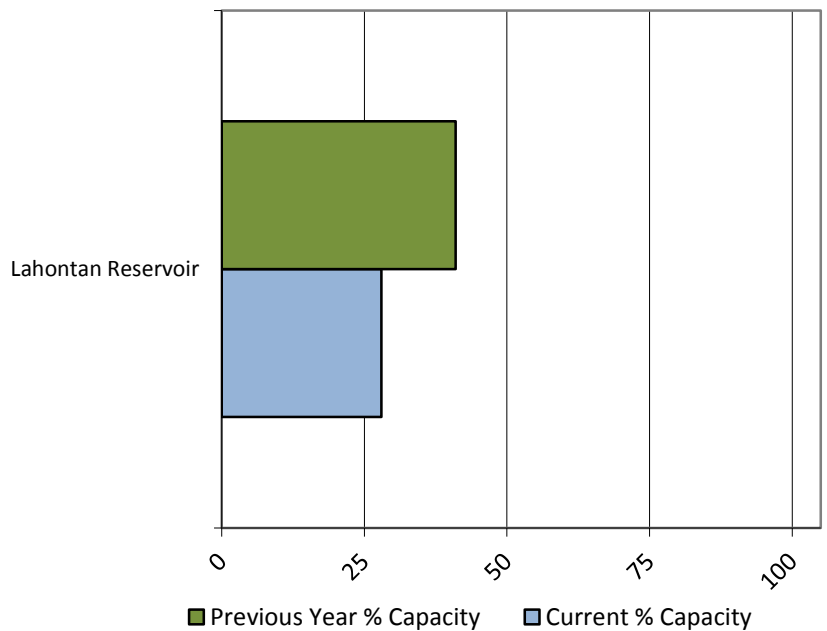
Soil Moisture



Precipitation



Reservoir Storage



Carson River Streamflow Forecasts - May 1, 2014

Forecast Exceedance Probabilities for Risk Assessment Chance that actual volume will exceed forecast

Carson River	Forecast Period	90% (KAF)	70% (KAF)	50% (KAF)	% Avg	30% (KAF)	10% (KAF)	30yr Avg (KAF)
EF Carson R nr Gardnerville	APR-JUL	1.86	32	56	30%	80	116	186
	MAY-JUL	1.51	7.9	23	15%	38	60	151
	200 cfs	29 May	06 Jun	11 Jun		16 Jun	24 Jun	23 Jul
	500 cfs	08 May	17 May	23 May		29 May	07 Jun	29 Jun
WF Carson R nr Woodfords	APR-JUL	3.2	11.4	17	31%	23	31	54
	MAY-JUL	0.42	4.2	10	24%	15.8	24	42
Carson R nr Carson City	APR-JUL	16.2	22	27	15%	32	42	179
	MAY-JUL	5.2	12.8	20	14%	29	44	144
Marlette Lake Inflow (ac-ft)	APR-JUL	-447	-151	50	5%	251	547	911
	MAY-JUL	-441	-160	30	5%	220	501	630
King Canyon Ck nr Carson City	APR-JUL	0.004	0.008	0.05	13%	0.156	0.38	0.38
	MAY-JUL	0.003	0.005	0.02	7%	0.116	0.2	0.27
Carson R at Ft Churchill	APR-JUL	5	11	17	10%	25	40	171
	MAY-JUL	4.3	8.7	13	9%	18.5	29	138
Ash Canyon Ck nr Carson City	APR-JUL	0.011	0.21	0.4	36%	0.59	0.87	1.12
	MAY-JUL	0.009	0.14	0.3	33%	0.46	0.69	0.91

1) 90% and 10% exceedance probabilities are actually 95% and 5%

2) Forecasts are for unimpaired flows. Actual flow will be dependent on management of upstream reservoirs and diversions

3) Median value used in place of average

Reservoir Storage End of April, 2014	Current (KAF)	Last Year (KAF)	Average (KAF)	Capacity (KAF)
LAHONTAN RESERVOIR, NV	83.3	119.7	204.3	295.1
Basin-wide Total	83.3	119.7	204.3	295.1
# of reservoirs	1	1	1	1

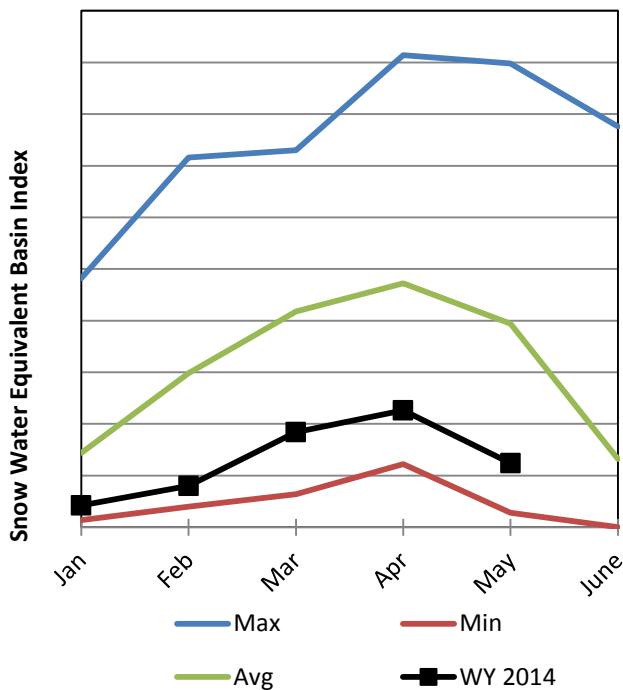
Watershed Snowpack Analysis May 1, 2014	# of Sites	% Median	Last Year % Median
Carson River Basin	8	34%	23%
E.F. Carson River	4	31%	21%
W.F. Carson River	8	34%	23%

Walker River Basin

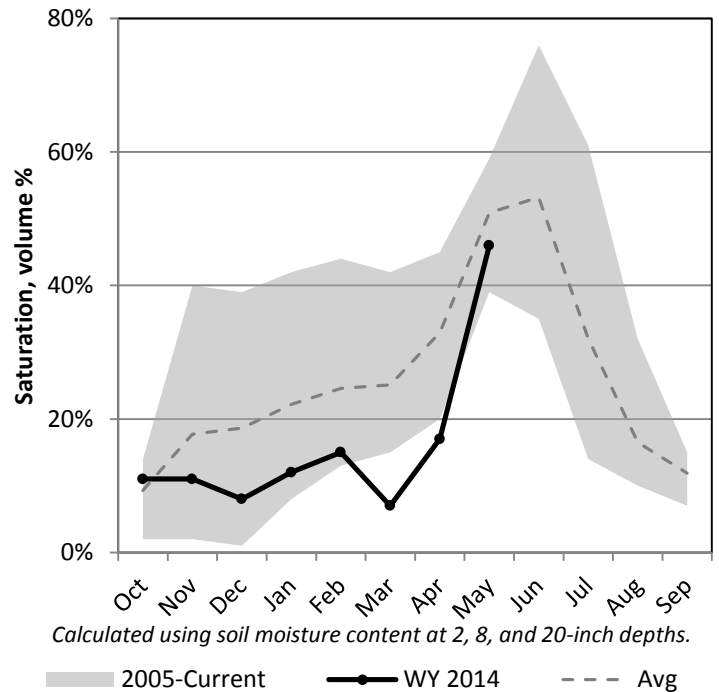
5/1/2014

Snowpack in the Walker River Basin is much below average at 31% of normal, compared to 49% last year. Precipitation in April was much below average at 60%, which brings the seasonal accumulation (Oct-Apr) to 56% of average. Soil moisture is at 46% compared to 58% last year. Reservoir storage is at 12% of capacity, compared to 22% last year. Forecast streamflow volumes range from 8% to 27% of average.

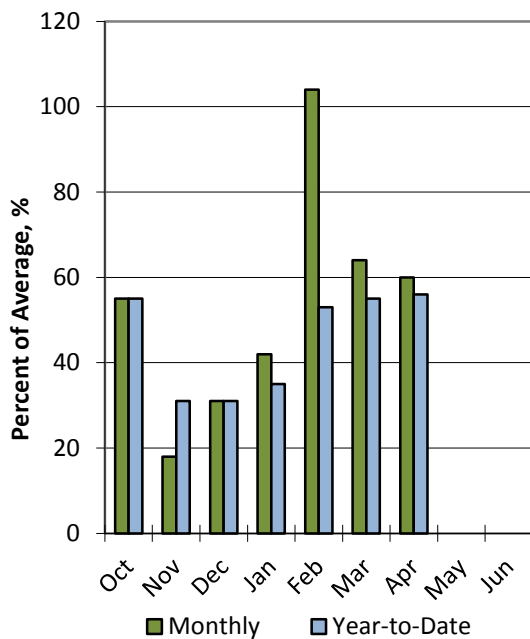
Snowpack



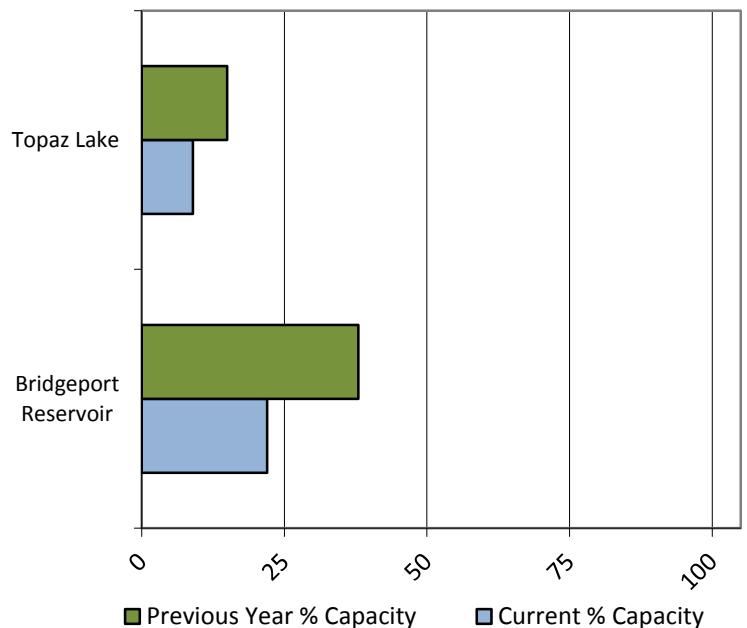
Soil Moisture



Precipitation



Reservoir Storage



Data Current as of: 5/8/2014 10:21:42 AM

Walker River Streamflow Forecasts - May 1, 2014

Forecast Exceedance Probabilities for Risk Assessment Chance that actual volume will exceed forecast

Walker River	Forecast Period	90% (KAF)	70% (KAF)	50% (KAF)	% Avg	30% (KAF)	10% (KAF)	30yr Avg (KAF)
E Walker R nr Bridgeport	APR-AUG	0.67	2	7	10%	27	57	67
	MAY-AUG	0.59	1.18	5	8%	22	48	59
W Walker R bl L Walker nr Coalville	APR-JUL	22	40	52	32%	64	82	162
	MAY-JUL	5.2	25	39	27%	53	73	142
W Walker R nr Coalville	APR-JUL	44	49	52	32%	55	60	163
	MAY-JUL	1.43	10	39	27%	77	132	143
Walker Lake Elevation Change ¹	LOW-HIGH	4.2	-2	-1.07	-76%	-0.1	2	1.4

1) 90% and 10% exceedance probabilities are actually 95% and 5%

2) Forecasts are for unimpaired flows. Actual flow will be dependent on management of upstream reservoirs and diversions

3) Median value used in place of average

Reservoir Storage End of April, 2014	Current (KAF)	Last Year (KAF)	Average (KAF)	Capacity (KAF)
BRIDGEPORT RESERVOIR, CA	9.3	16.3	24.1	42.5
TOPAZ LK NR TOPAZ, CA	8.1	16.6	29.9	59.4
Basin-wide Total	17.4	32.9	54.0	101.9
# of reservoirs	2	2	2	2

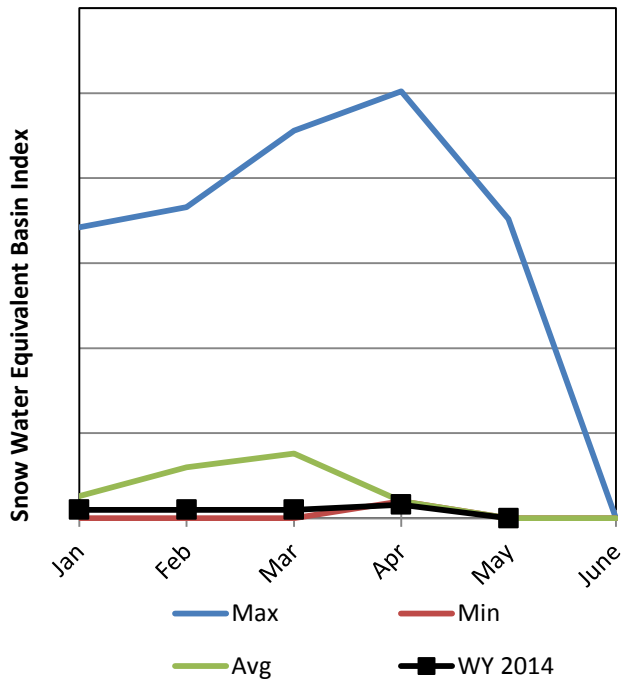
Watershed Snowpack Analysis May 1, 2014	# of Sites	% Median	Last Year % Median
Walker Lake Rise	5	37%	57%
E. Walker Rv. Nr Bridgeport	2	22%	28%
W. Walker Rv. Nr Coleville	4	37%	60%

Northern Great Basin

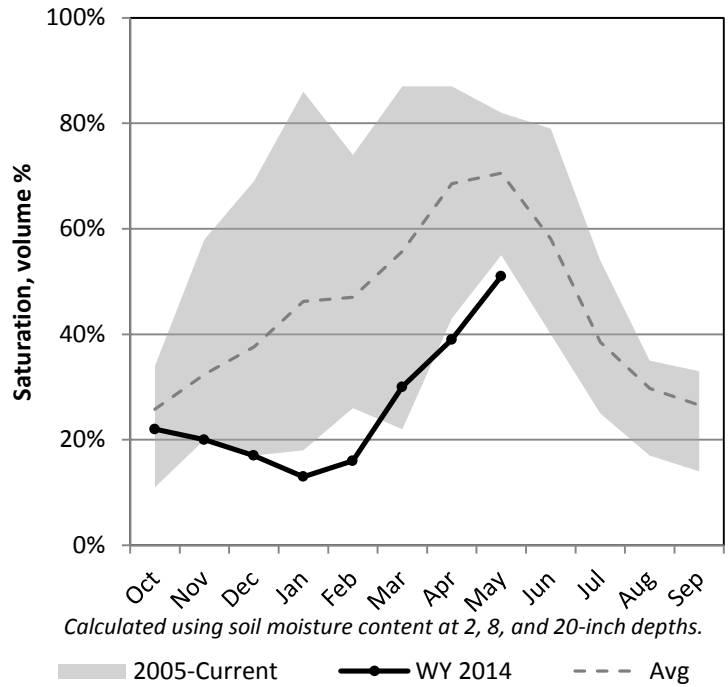
5/1/2014

Snowpack in the Northern Great Basin is much below average at % of normal, compared to % last year. Precipitation in April was above average at 124%, which brings the seasonal accumulation (Oct-Apr) to 68% of average. Soil moisture is at 51% compared to 55% last year. Forecast streamflow volumes range from 0% to 0% of average.

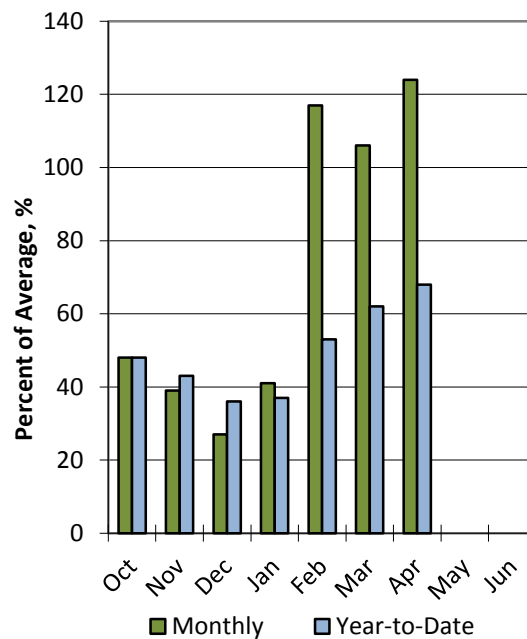
Snowpack



Soil Moisture



Precipitation



Northern Great Basin
Streamflow Forecasts - May 1, 2014

Forecast Exceedance Probabilities for Risk Assessment Chance that actual volume will exceed forecast

Northern Great Basin	Forecast Period	90% (KAF)	70% (KAF)	50% (KAF)	% Avg	30% (KAF)	10% (KAF)	30yr Avg (KAF)
Eagle Ck nr Eagleville	APR-JUL	0.19	1.27	2	47%	2.7	3.8	4.3
Bidwell Ck nr Fort Bidwell	APR-JUL	1.06	3	4.3	36%	5.6	7.5	12
McDermitt Ck nr McDermitt	MAR-JUN	0.18	1.96	5.2	30%	8.4	13.2	17.5
	APR-JUL	0.28	1.37	4.2	30%	7	11.2	14
Davis Ck (ac-ft)	APR-JUL	1313	1687	2000	28%	2371	3045	7233
	APR-SEP	1622	2048	2400	30%	2812	3551	7991

- 1) 90% and 10% exceedance probabilities are actually 95% and 5%
2) Forecasts are for unimpaired flows. Actual flow will be dependent on management of upstream reservoirs and diversions
3) Median value used in place of average

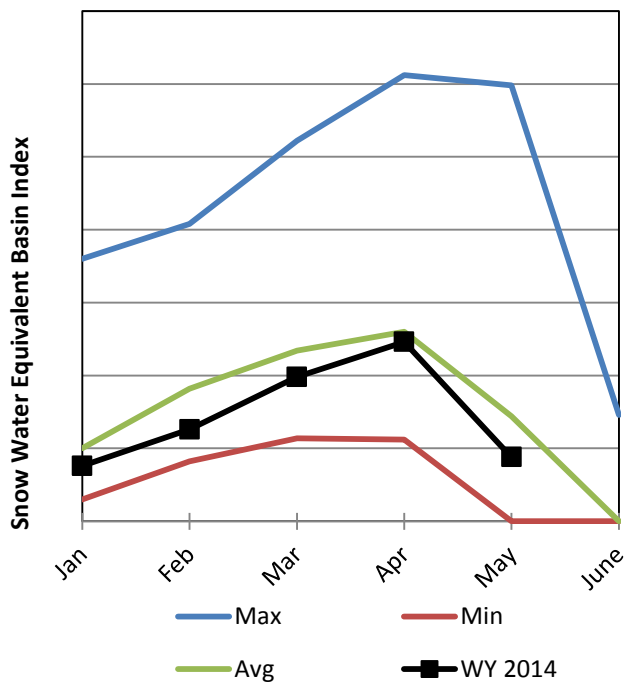
Watershed Snowpack Analysis May 1, 2014	# of Sites	% Median	Last Year % Median
N Great Basin	2		
Quinn River	1		
McDermitt Creek	1		

Upper Humboldt River Basin

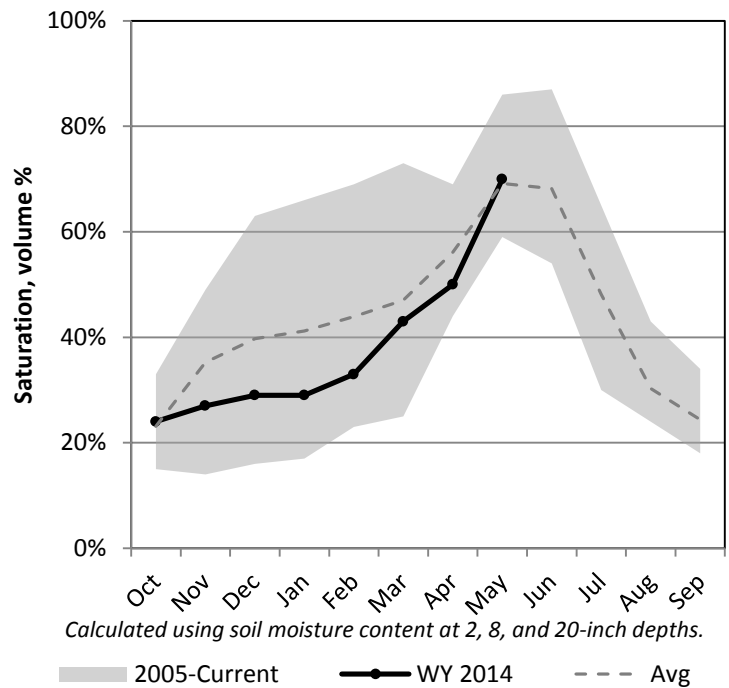
5/1/2014

Snowpack in the Upper Humboldt River Basin is much below average at 62% of normal, compared to 25% last year. Precipitation in April was below average at 89%, which brings the seasonal accumulation (Oct-Apr) to 89% of average. Soil moisture is at 70% compared to 65% last year. Forecast streamflow volumes range from 15% to 70% of average.

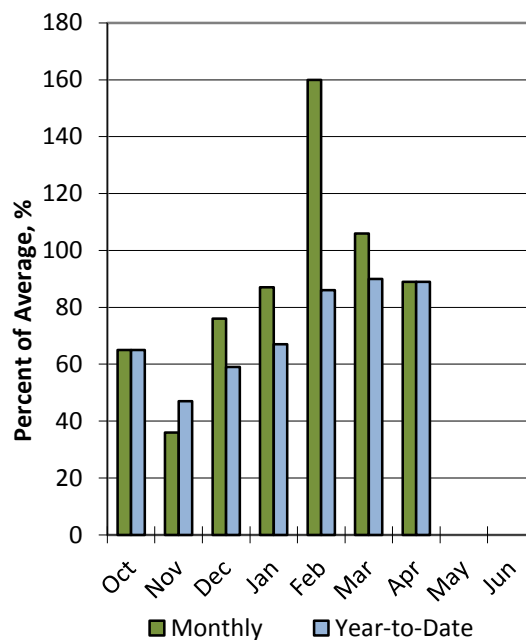
Snowpack



Soil Moisture



Precipitation



Upper Humboldt River
Streamflow Forecasts - May 1, 2014

Forecast Exceedance Probabilities for Risk Assessment Chance that actual volume will exceed forecast

Upper Humboldt River	Forecast Period	90% (KAF)	70% (KAF)	50% (KAF)	% Avg	30% (KAF)	10% (KAF)	30yr Avg (KAF)
Marys R nr Deeth	APR-JUL	0.36	1.08	5.8	16%	14.5	27	36
	MAY-JUL	0.26	0.52	4	15%	9.9	18.5	26
Lamoille Ck nr Lamoille	APR-JUL	7.8	15.1	20	69%	25	32	29
	MAY-JUL	6.7	14	19	70%	24	31	27
NF Humboldt R at Devils Gate	APR-JUL	2.8	4.4	6	18%	8.2	12.8	34
	MAY-JUL	1.87	3.1	4.3	20%	6	9.9	22
Humboldt R nr Elko	APR-JUL	1.54	8.4	32	21%	56	90	154
	MAY-JUL	1.19	10.5	31	26%	51	82	119
SF Humboldt R at Dixie	APR-JUL	7	21	31	47%	41	55	66
	MAY-JUL	2.5	17.7	28	49%	38	53	57
Humboldt R nr Carlin	APR-JUL	11	40	40	17%	79	108	238
	MAY-JUL	1.89	17.6	30	16%	58	88	189
Humboldt R at Palisades	APR-JUL	2.2	47	36	16%	118	170	225
	MAY-JUL	1.71	8.6	29	17%	62	111	171

- 1) 90% and 10% exceedance probabilities are actually 95% and 5%
2) Forecasts are for unimpaired flows. Actual flow will be dependent on management of upstream reservoirs and diversions
3) Median value used in place of average

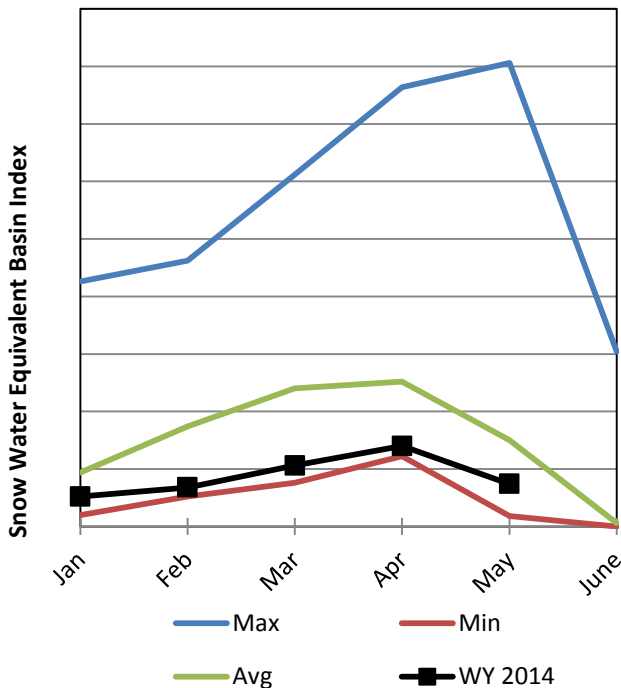
Watershed Snowpack Analysis May 1, 2014	# of Sites	% Median	Last Year % Median
Humboldt Rv. At Palisades	5	62%	25%
Lamoille Creek	1	3%	0%
S. Fork Humboldt	2	81%	44%
Mary's River	1	0%	0%
N. Fork Humboldt	0		

Lower Humboldt River Basin

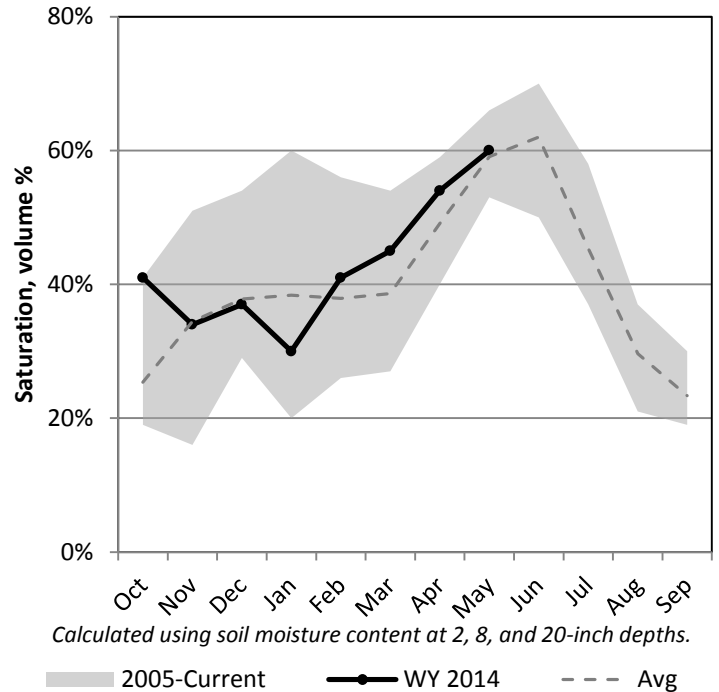
5/1/2014

Snowpack in the Lower Humboldt River Basin is much below average at 50% of normal, compared to 54% last year. Precipitation in April was much below average at 56%, which brings the seasonal accumulation (Oct-Apr) to 76% of average. Soil moisture is at 60% compared to 60% last year. Reservoir storage is at 4.5% of capacity, compared to 12% last year. Forecast streamflow volumes range from 1% to 53% of average.

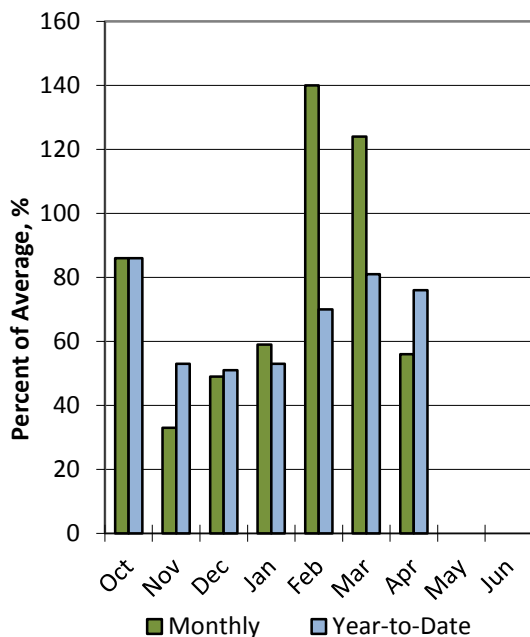
Snowpack



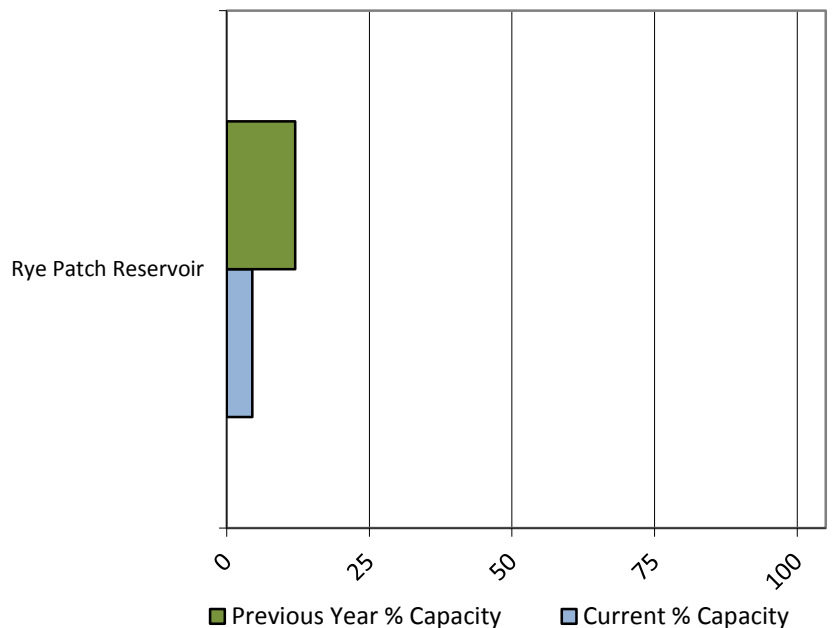
Soil Moisture



Precipitation



Reservoir Storage



Lower Humboldt River Streamflow Forecasts - May 1, 2014

 Forecast Exceedance Probabilities for Risk Assessment
 Chance that actual volume will exceed forecast

Lower Humboldt River	Forecast Period	90% (KAF)	70% (KAF)	50% (KAF)	% Avg	30% (KAF)	10% (KAF)	30yr Avg (KAF)
Rock Ck nr Battle Mtn	APR-JUL	0.18	0.356	1.26	7%	3.36	6.46	18.2
	MAY-JUL	0.02	0.196	1.1	11%	3.2	6.3	9.8
Humboldt R at Comus	APR-JUL	1.08	6.4	25	12%	61	113	215
	MAY-JUL	0.78	3.1	15	10%	44	87	156
L Humboldt R nr Paradise	APR-JUL	3	5.05	6.25	64%	7.65	9.45	9.7
	MAY-JUL	0.75	2.8	4	53%	5.4	7.2	7.6
Martin Ck nr Paradise	APR-JUL	2.332	2.7	6.01	34%	9.31	14.11	17.5
	MAY-JUL	0.122	0.49	3.8	31%	7.1	11.9	12.2
Humboldt R nr Imlay	APR-JUL	0.094	1.88	4	2%	55	129	188
	MAY-JUL	0.01	0.7	1	1%	48	117	141

1) 90% and 10% exceedance probabilities are actually 95% and 5%

2) Forecasts are for unimpaired flows. Actual flow will be dependent on management of upstream reservoirs and diversions

3) Median value used in place of average

Reservoir Storage End of April, 2014	Current (KAF)	Last Year (KAF)	Average (KAF)	Capacity (KAF)
RYE PATCH RE NR RYE PATCH, NV	9.5	23.5	103.3	194.3
Basin-wide Total	9.5	23.5	103.3	194.3
# of reservoirs	1	1	1	1

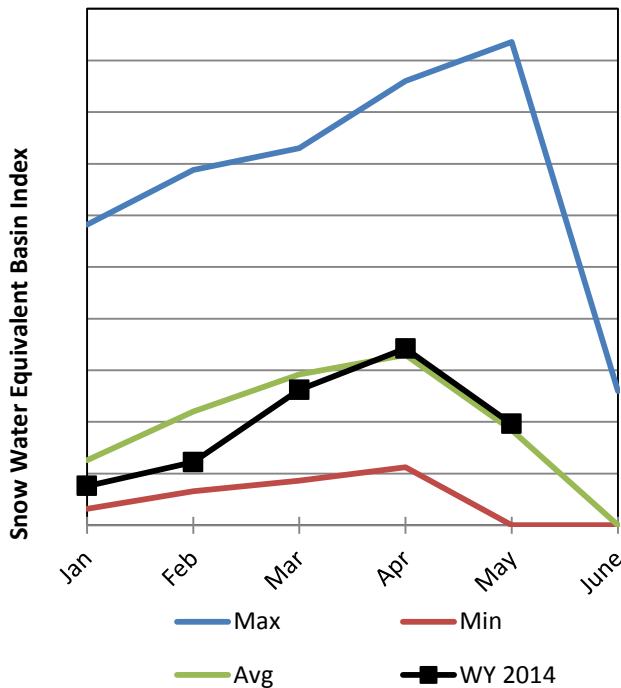
Watershed Snowpack Analysis May 1, 2014	# of Sites	% Median	Last Year % Median
Lower Humboldt River Basin	5	50%	54%
Little Humboldt River	3	41%	34%
Martin Creek	3	41%	34%
Reese River	2	59%	77%
Rock Creek	0		

Clover Valley & Franklin River Basin

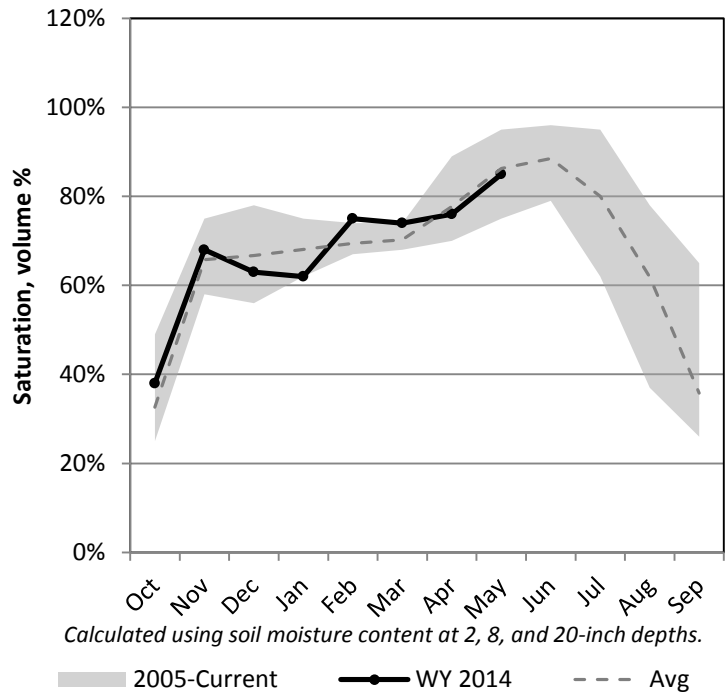
5/1/2014

Snowpack in the Clover Valley & Franklin River Basin is near average at 107% of normal, compared to 0% last year. Precipitation in April was near average at 92%, which brings the seasonal accumulation (Oct-Apr) to 103% of average. Soil moisture is at 85% compared to 82% last year. The forecast streamflow volume for the Franklin River is 0% of average.

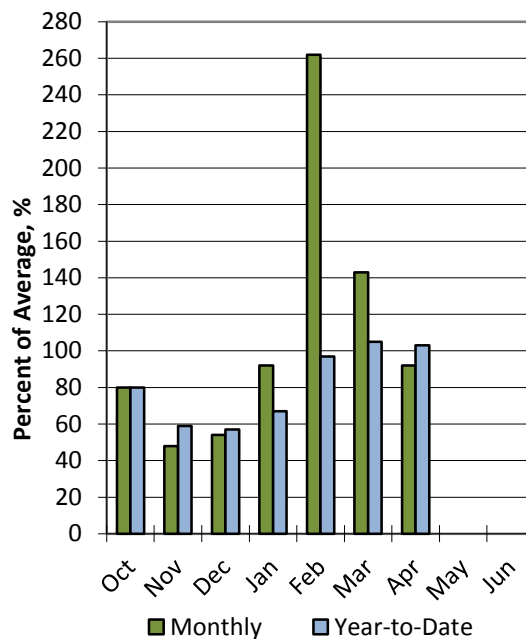
Snowpack



Soil Moisture



Precipitation



Clover Valley & Franklin River
Streamflow Forecasts - May 1, 2014

Forecast Exceedance Probabilities for Risk Assessment Chance that actual volume will exceed forecast

Clover Valley & Franklin River	Forecast Period	90% (KAF)	70% (KAF)	50% (KAF)	% Avg	30% (KAF)	10% (KAF)	30yr Avg (KAF)
Franklin Ck nr Arthur	APR-JUL	2.3	3.2	3.9	57%	4.6	5.5	6.9

- 1) 90% and 10% exceedance probabilities are actually 95% and 5%
2) Forecasts are for unimpaired flows. Actual flow will be dependent on management of upstream reservoirs and diversions
3) Median value used in place of average

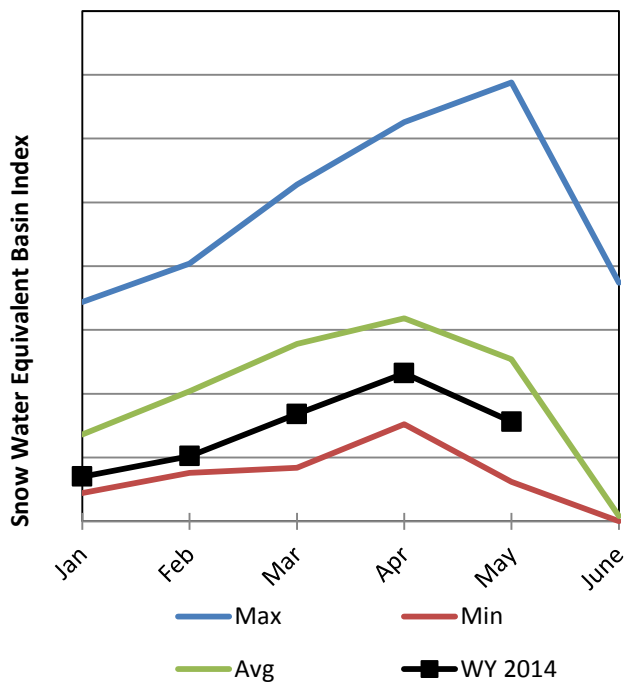
Watershed Snowpack Analysis May 1, 2014	# of Sites	% Median	Last Year % Median
Clover Valley & Franklin River	1	107%	0%
Franklin River	1	107%	0%
Clover Valley	1	107%	0%

Snake River Basin

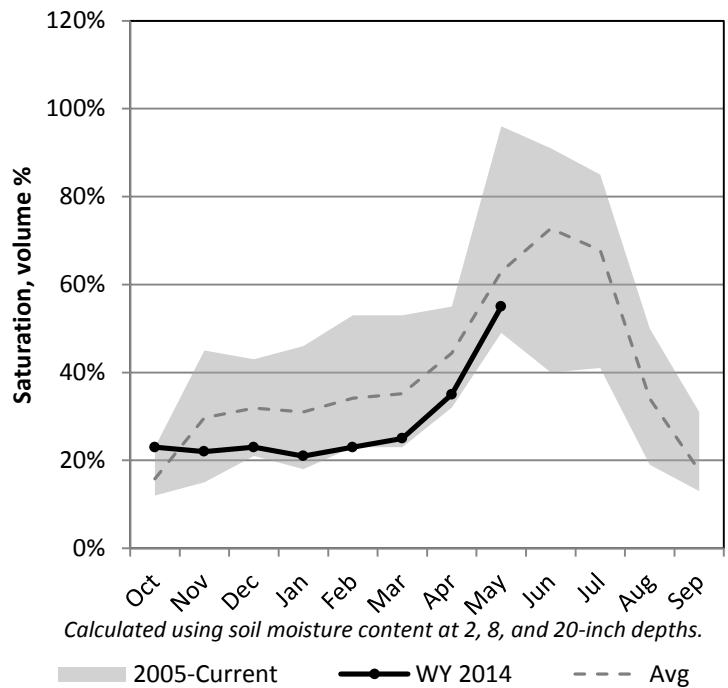
5/1/2014

Snowpack in the Snake River Basin is much below average at 61% of normal, compared to 99% last year. Precipitation in April was below average at 80%, which brings the seasonal accumulation (Oct-Apr) to 76% of average. Soil moisture is at 55% compared to 51% last year. The forecast streamflow volume for Salmon Falls is 37% of average.

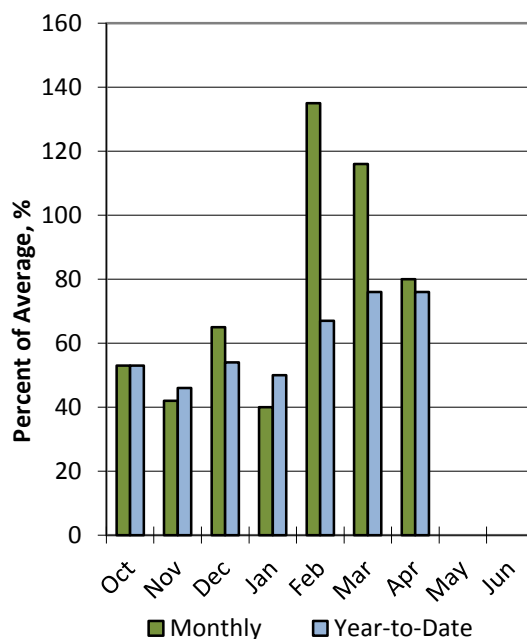
Snowpack



Soil Moisture



Precipitation



Snake River Basin
Streamflow Forecasts - May 1, 2014

Forecast Exceedance Probabilities for Risk Assessment Chance that actual volume will exceed forecast

Snake River Basin	Forecast Period	90% (KAF)	70% (KAF)	50% (KAF)	% Avg	30% (KAF)	10% (KAF)	30yr Avg (KAF)
Salmon Falls Ck nr San Jacinto								
	MAY-JUL	6.8	12.8	18	37%	24	35	49
	MAY-SEP	7.9	14.2	19.6	37%	26	36	53

- 1) 90% and 10% exceedance probabilities are actually 95% and 5%
2) Forecasts are for unimpaired flows. Actual flow will be dependent on management of upstream reservoirs and diversions
3) Median value used in place of average

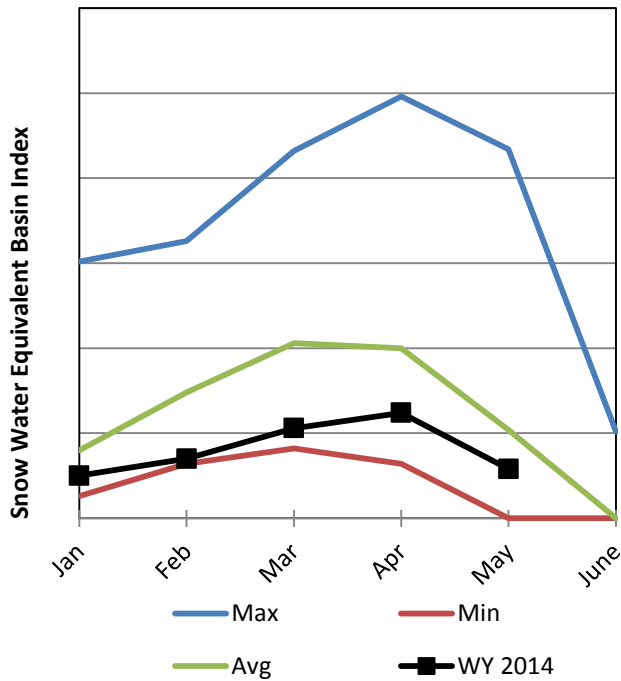
Watershed Snowpack Analysis May 1, 2014	# of Sites	% Median	Last Year % Median
Snake River Basin	3	61%	99%
Salmon Falls Creek	5	62%	84%

Owyhee River Basin

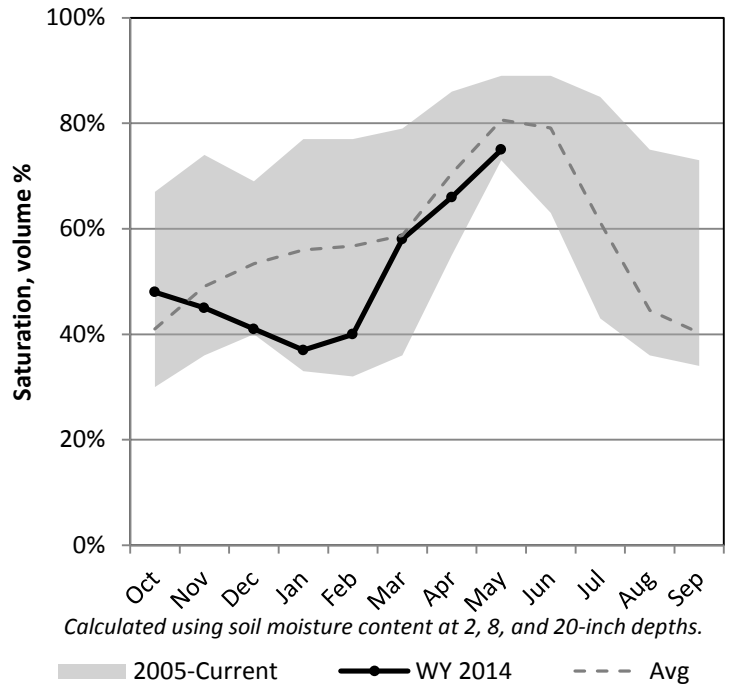
5/1/2014

Snowpack in the Owyhee River Basin is much below average at 57% of normal, compared to 19% last year. Precipitation in April was below average at 75%, which brings the seasonal accumulation (Oct-Apr) to 79% of average. Soil moisture is at 75% compared to 82% last year. Reservoir storage is at 24% of capacity, compared to 45% last year. The forecast streamflow volume for the Owyhee River near Gold Creek is 3% of average.

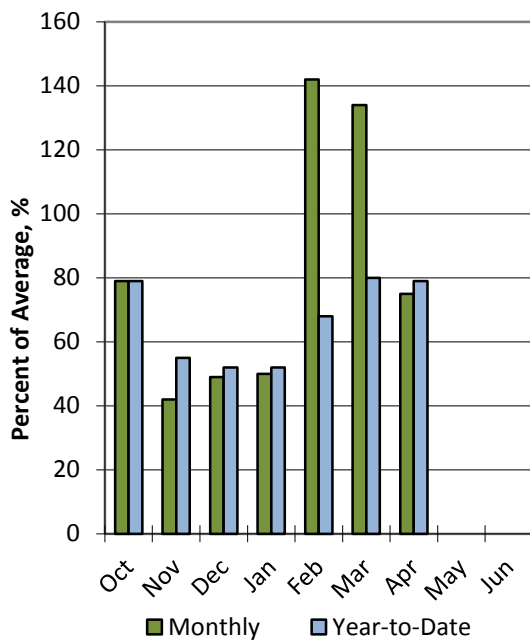
Snowpack



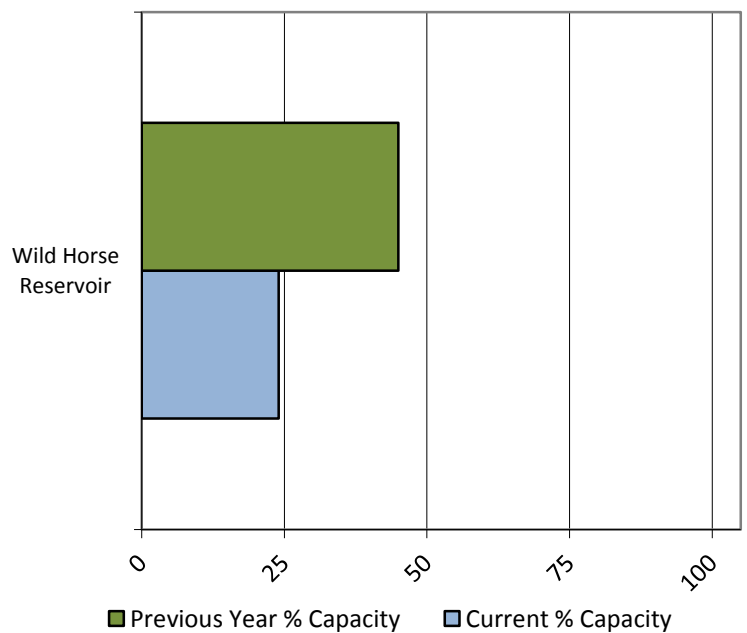
Soil Moisture



Precipitation



Reservoir Storage



Owyhee River Basin
Streamflow Forecasts - May 1, 2014

Forecast Exceedance Probabilities for Risk Assessment Chance that actual volume will exceed forecast

Owyhee River Basin	Forecast Period	90% (KAF)	70% (KAF)	50% (KAF)	% Avg	30% (KAF)	10% (KAF)	30yr Avg (KAF)
Owyhee R nr Gold Ck ²								
	MAY-JUL	0	0	0.31	3%	2	9.7	9.6
	MAY-SEP	0	0	0.04	0%	0.98	7.4	8.3

- 1) 90% and 10% exceedance probabilities are actually 95% and 5%
2) Forecasts are for unimpaired flows. Actual flow will be dependent on management of upstream reservoirs and diversions
3) Median value used in place of average

Reservoir Storage End of April, 2014	Current (KAF)	Last Year (KAF)	Average (KAF)	Capacity (KAF)
WILD HORSE RE NR GOLD CREEK, NV	16.9	32.2	49.4	71.5
Basin-wide Total	16.9	32.2	49.4	71.5
# of reservoirs	1	1	1	1

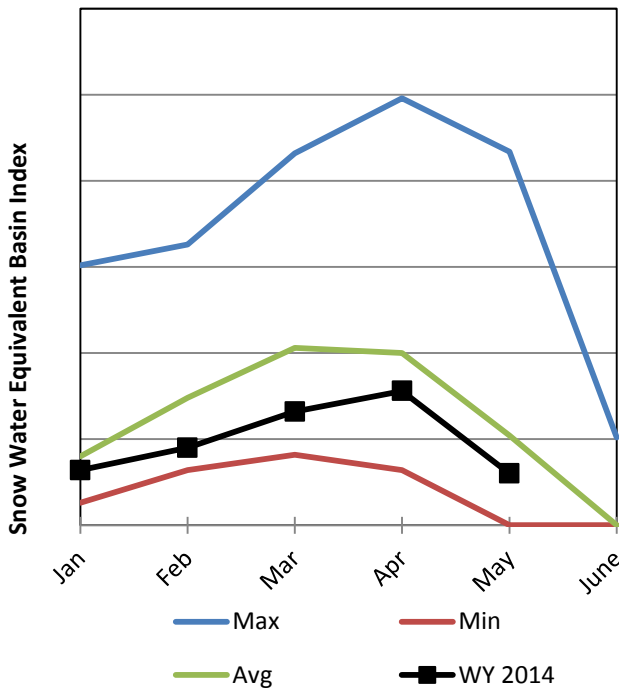
Watershed Snowpack Analysis May 1, 2014	# of Sites	% Median	Last Year % Median
Owyhee River Basin	5	57%	19%
Owyhee River nr Owyhee	3	52%	0%
Owyhee R. nr Gold Creek	1		
S. Fork Owyhee River	1	61%	34%

Eastern Nevada Basin

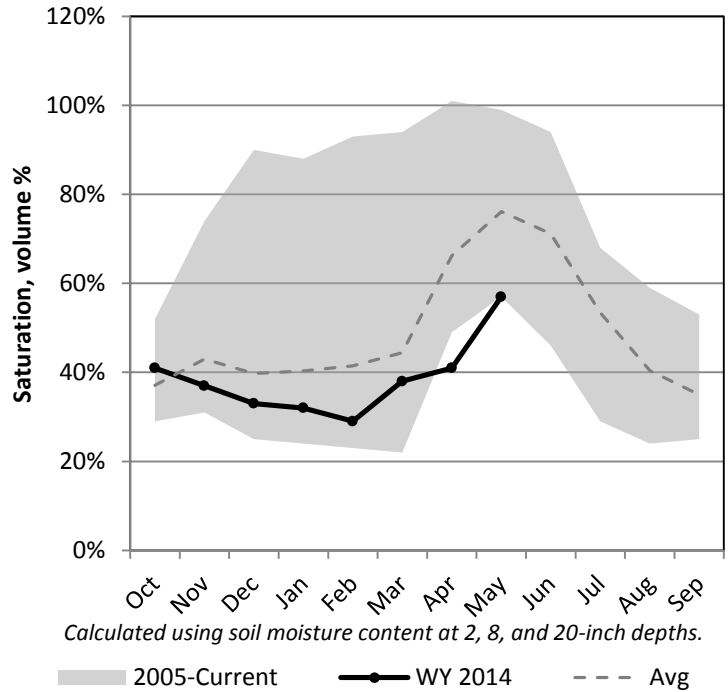
5/1/2014

Snowpack in the Eastern Nevada Basin is much below average at 43% of normal, compared to 43% last year. Precipitation in April was below average at 75%, which brings the seasonal accumulation (Oct-Apr) to 76% of average. Soil moisture is at 57% compared to 57% last year. Forecast streamflow volumes range from 41% to 41% of average.

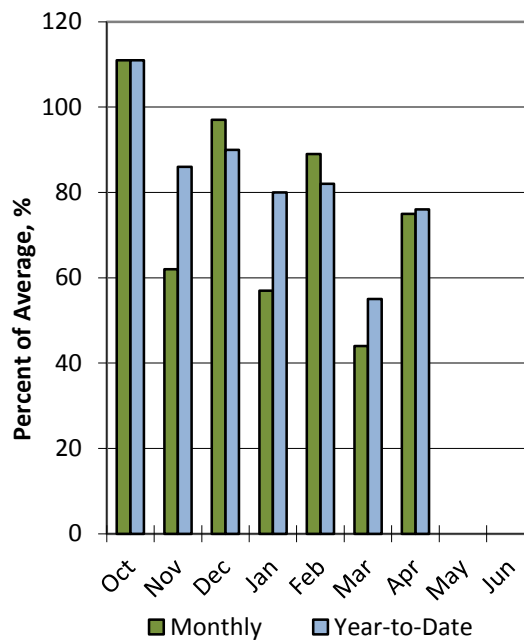
Snowpack



Soil Moisture



Precipitation



Eastern Nevada
Streamflow Forecasts - May 1, 2014

Forecast Exceedance Probabilities for Risk Assessment Chance that actual volume will exceed forecast

Eastern Nevada	Forecast Period	90% (KAF)	70% (KAF)	50% (KAF)	% Avg	30% (KAF)	10% (KAF)	30yr Avg (KAF)
Kingston Ck nr Austin	APR-JUL	0.072	0.93	2.2	61%	3.5	5.3	3.6
Lehman Ck nr Baker	APR-JUL	0.28	0.92	1.6	59%	2.01	2.63	2.72
	MAY-JUL	0.34	0.97	1.4	54%	1.83	2.5	2.61
Cleve Ck nr Ely	APR-JUL	0.044	0.93	2.2	50%	3.1	4.2	4.41
	MAY-JUL	0.037	1.09	1.9	52%	2.7	3.9	3.66
Steptoe Ck nr Ely	APR-JUL	0.223	0.44	0.8	30%	1.16	1.7	2.7
	MAY-JUL	0.063	0.28	0.64	30%	1	1.54	2.1

- 1) 90% and 10% exceedance probabilities are actually 95% and 5%
2) Forecasts are for unimpaired flows. Actual flow will be dependent on management of upstream reservoirs and diversions
3) Median value used in place of average

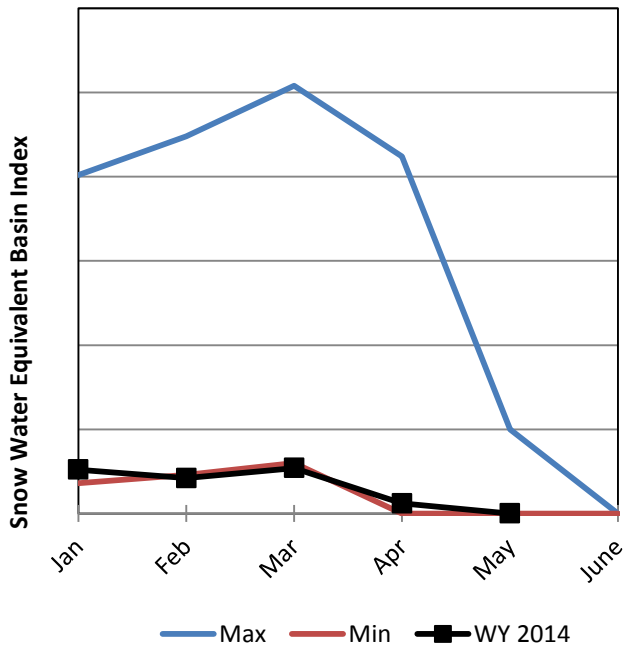
Watershed Snowpack Analysis May 1, 2014	# of Sites	% Median	Last Year % Median
Eastern Nevada	3	43%	43%
Kingston Creek	1	65%	85%
Steptoe Valley	2	39%	43%

Lower Colorado River Basin

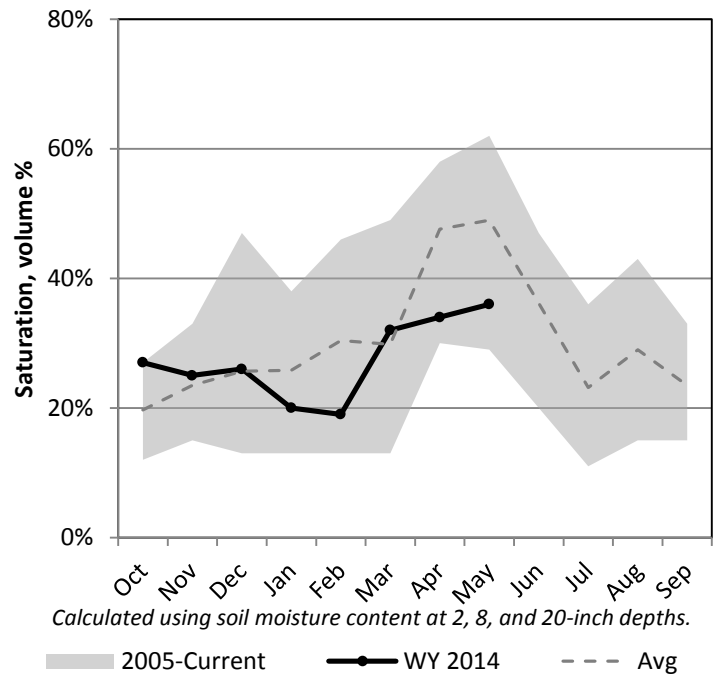
5/1/2014

Precipitation at SNOTEL stations within the Lower Colorado River Basin in April averaged 0.7 inches, which brings the average SNOTEL seasonal accumulation within the basin (Oct-Apr) to 8.6 inches. Soil moisture is at 36% compared to 29% last year. Reservoir storage is at 46% of capacity, compared to 52% last year. Forecast streamflow volumes range from 17% to 102% of average.

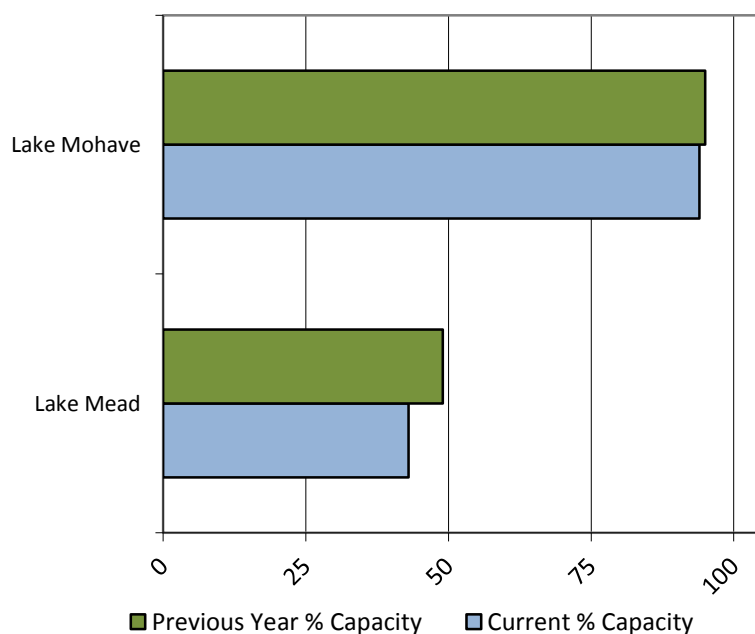
Snowpack



Soil Moisture



Reservoir Storage



Lower Colorado River Basin
Streamflow Forecasts - May 1, 2014

Forecast Exceedance Probabilities for Risk Assessment Chance that actual volume will exceed forecast

Lower Colorado River Basin	Forecast Period	90% (KAF)	70% (KAF)	50% (KAF)	% Avg	30% (KAF)	10% (KAF)	30yr Avg (KAF)
Virgin R at Littlefield	APR-JUL	9.7	11.8	13.5	21%	15.4	18.7	65
	MAY-JUL	3.4	5.5	7.2	17%	9.1	12.4	43
Lake Powell Inflow ²	APR-JUL	5610	6500	7160	100%	7840	8920	7160
	MAY-JUL	4650	5540	6200	102%	6880	7960	6100
Virgin R nr Hurricane	APR-JUL	7.4	10.6	13.3	21%	16.5	22	63
	MAY-JUL	3.2	6.4	9.1	22%	12.3	17.8	41

1) 90% and 10% exceedance probabilities are actually 95% and 5%
2) Forecasts are for unimpaired flows. Actual flow will be dependent on management of upstream reservoirs and diversions
3) Median value used in place of average

Reservoir Storage End of April, 2014	Current (KAF)	Last Year (KAF)	Average (KAF)	Capacity (KAF)
LAKE MEAD	11240.0	12921.0	20158.0	26159.0
LAKE MOHAVE	1695.8	1722.6	1678.0	1810.0
Basin-wide Total	12935.8	14643.6	21836.0	27969.0
# of reservoirs	2	2	2	2

Watershed Snowpack Analysis May 1, 2014	# of Sites	% Median	Last Year % Median
Lower Colorado River Basin	0		
Spring Mountains	0		

Report Created:
5/7/2014 10:12:01 PM

Streamflow Forecast Summary: May 1, 2014
(averages based on 1981-2010 reference period)

Lake Tahoe	Forecast Period	Forecast Exceedance Probabilities for Risk Assessment Chance that actual volume will exceed forecast						30yr Avg (KAF)
		90% (KAF)	70% (KAF)	50% (KAF)	% Avg	30% (KAF)	10% (KAF)	
Marlette Lake Inflow (ac-ft)								
	APR-JUL	-447	-151	50	5%	251	547	911
	MAY-JUL	-441	-160	30	5%	220	501	630
Lake Tahoe Rise Gates Closed (ft) ¹								
	APR-HIGH	0.013	0.08	0.17	13%	0.27	0.48	1.31
	MAY-HIGH	0.001	0.011	0.03	3%	0.12	0.32	1.08

- 1) 90% and 10% exceedance probabilities are actually 95% and 5%
- 2) Forecasts are for unimpaired flows. Actual flow will be dependent on management of upstream reservoirs and diversions
- 3) Median value used in place of average

		Forecast Exceedance Probabilities for Risk Assessment Chance that actual volume will exceed forecast						
Truckee River	Forecast Period	90% (KAF)	70% (KAF)	50% (KAF)	% Avg	30% (KAF)	10% (KAF)	30yr Avg (KAF)
Sagehen Ck nr Truckee								
	APR-JUL	0.76	0.84	0.9	16%	0.96	1.06	5.6
	MAY-JUL	0.32	0.37	0.4	10%	0.44	0.5	4.2
L Truckee R ab Boca Reservoir								
	APR-JUL	0.8	4.8	16	20%	47	93	80
	MAY-JUL	0.63	3.8	12	19%	42	85	63
Truckee R at Farad								
	APR-JUL	2.6	35	64	25%	93	136	260
	MAY-JUL	1.93	17.1	42	22%	67	104	193
Steamboat Ck at Steamboat								
	APR-JUL	0.18	0.33	0.62	8%	1.09	2.2	7.9
	MAY-JUL	0.06	0.21	0.5	8%	0.97	2.08	6.1
Galena Ck at Galena Ck State Pk								
	APR-JUL	0.08	0.53	1.49	34%	1.82	2.4	4.37
	MAY-JUL	0.14	0.77	1.2	33%	1.63	2.3	3.65
Pyramid Lake Elevation Change (ft) ¹								
	LOW-HIGH	-3.3	-1.57	-0.81	-48%	-0.04	1.64	1.7

- 1) 90% and 10% exceedance probabilities are actually 95% and 5%
- 2) Forecasts are for unimpaired flows. Actual flow will be dependent on management of upstream reservoirs and diversions
- 3) Median value used in place of average

		Forecast Exceedance Probabilities for Risk Assessment Chance that actual volume will exceed forecast						
Carson River	Forecast Period	90% (KAF)	70% (KAF)	50% (KAF)	% Avg	30% (KAF)	10% (KAF)	30yr Avg (KAF)
EF Carson R nr Gardnerville								
	APR-JUL	1.86	32	56	30%	80	116	186
	MAY-JUL	1.51	7.9	23	15%	38	60	151
	200 cfs	29 May	06 Jun	11 Jun		16 Jun	24 Jun	23 Jul
	500 cfs	08 May	17 May	23 May		29 May	07 Jun	29 Jun
WF Carson R nr Woodfords								
	APR-JUL	3.2	11.4	17	31%	23	31	54
	MAY-JUL	0.42	4.2	10	24%	15.8	24	42
Carson R nr Carson City								
	APR-JUL	16.2	22	27	15%	32	42	179
	MAY-JUL	5.2	12.8	20	14%	29	44	144
Marlette Lake Inflow (ac-ft)								

	APR-JUL	-447	-151	50	5%	251	547	911
	MAY-JUL	-441	-160	30	5%	220	501	630
King Canyon Ck nr Carson City								
	APR-JUL	0.004	0.008	0.05	13%	0.156	0.38	0.38
	MAY-JUL	0.003	0.005	0.02	7%	0.116	0.2	0.27
Carson R at Ft Churchill								
	APR-JUL	5	11	17	10%	25	40	171
	MAY-JUL	4.3	8.7	13	9%	18.5	29	138
Ash Canyon Ck nr Carson City								
	APR-JUL	0.011	0.21	0.4	36%	0.59	0.87	1.12
	MAY-JUL	0.009	0.14	0.3	33%	0.46	0.69	0.91

- 1) 90% and 10% exceedance probabilities are actually 95% and 5%
- 2) Forecasts are for unimpaired flows. Actual flow will be dependent on management of upstream reservoirs and diversions
- 3) Median value used in place of average

Forecast Exceedance Probabilities for Risk Assessment Chance that actual volume will exceed forecast

Walker River	Forecast Period	90% (KAF)	70% (KAF)	50% (KAF)	% Avg	30% (KAF)	10% (KAF)	30yr Avg (KAF)
E Walker R nr Bridgeport								
	APR-AUG	0.67	2	7	10%	27	57	67
	MAY-AUG	0.59	1.18	5	8%	22	48	59
W Walker R bl L Walker nr Coalville								
	APR-JUL	22	40	52	32%	64	82	162
	MAY-JUL	5.2	25	39	27%	53	73	142
W Walker R nr Coalville								
	APR-JUL	44	49	52	32%	55	60	163
	MAY-JUL	1.43	10	39	27%	77	132	143
Walker Lake Elevation Change ¹								
	LOW-HIGH	4.2	-2	-1.07	-76%	-0.1	2	1.4

- 1) 90% and 10% exceedance probabilities are actually 95% and 5%
- 2) Forecasts are for unimpaired flows. Actual flow will be dependent on management of upstream reservoirs and diversions
- 3) Median value used in place of average

Forecast Exceedance Probabilities for Risk Assessment Chance that actual volume will exceed forecast

Northern Great Basin	Forecast Period	90% (KAF)	70% (KAF)	50% (KAF)	% Avg	30% (KAF)	10% (KAF)	30yr Avg (KAF)
Eagle Ck nr Eagleville								
	APR-JUL	0.19	1.27	2	47%	2.7	3.8	4.3
Bidwell Ck nr Fort Bidwell								
	APR-JUL	1.06	3	4.3	36%	5.6	7.5	12
McDermitt Ck nr McDermitt								
	MAR-JUN	0.18	1.96	5.2	30%	8.4	13.2	17.5
	APR-JUL	0.28	1.37	4.2	30%	7	11.2	14
Davis Ck (ac-ft)								
	APR-JUL	1313	1687	2000	28%	2371	3045	7233
	APR-SEP	1622	2048	2400	30%	2812	3551	7991

- 1) 90% and 10% exceedance probabilities are actually 95% and 5%
- 2) Forecasts are for unimpaired flows. Actual flow will be dependent on management of upstream reservoirs and diversions
- 3) Median value used in place of average

Forecast Exceedance Probabilities for Risk Assessment Chance that actual volume will exceed forecast

Upper Humboldt River	Forecast Period	90% (KAF)	70% (KAF)	50% (KAF)	% Avg	30% (KAF)	10% (KAF)	30yr Avg (KAF)
-----------------------------	-----------------	-----------	-----------	-----------	-------	-----------	-----------	----------------

Marys R nr Deeth								
	APR-JUL	0.36	1.08	5.8	16%	14.5	27	36
	MAY-JUL	0.26	0.52	4	15%	9.9	18.5	26
Lamoille Ck nr Lamoille								
	APR-JUL	7.8	15.1	20	69%	25	32	29
	MAY-JUL	6.7	14	19	70%	24	31	27
NF Humboldt R at Devils Gate								
	APR-JUL	2.8	4.4	6	18%	8.2	12.8	34
	MAY-JUL	1.87	3.1	4.3	20%	6	9.9	22
Humboldt R nr Elko								
	APR-JUL	1.54	8.4	32	21%	56	90	154
	MAY-JUL	1.19	10.5	31	26%	51	82	119
SF Humboldt R at Dixie								
	APR-JUL	7	21	31	47%	41	55	66
	MAY-JUL	2.5	17.7	28	49%	38	53	57
Humboldt R nr Carlin								
	APR-JUL	11	40	40	17%	79	108	238
	MAY-JUL	1.89	17.6	30	16%	58	88	189
Humboldt R at Palisades								
	APR-JUL	2.2	47	36	16%	118	170	225
	MAY-JUL	1.71	8.6	29	17%	62	111	171

1) 90% and 10% exceedance probabilities are actually 95% and 5%

2) Forecasts are for unimpaired flows. Actual flow will be dependent on management of upstream reservoirs and diversions

3) Median value used in place of average

Forecast Exceedance Probabilities for Risk Assessment Chance that actual volume will exceed forecast

Lower Humboldt River	Forecast Period	90% (KAF)	70% (KAF)	50% (KAF)	% Avg	30% (KAF)	10% (KAF)	30yr Avg (KAF)
Rock Ck nr Battle Mtn								
	APR-JUL	0.18	0.356	1.26	7%	3.36	6.46	18.2
	MAY-JUL	0.02	0.196	1.1	11%	3.2	6.3	9.8
Humboldt R at Comus								
	APR-JUL	1.08	6.4	25	12%	61	113	215
	MAY-JUL	0.78	3.1	15	10%	44	87	156
L Humboldt R nr Paradise								
	APR-JUL	3	5.05	6.25	64%	7.65	9.45	9.7
	MAY-JUL	0.75	2.8	4	53%	5.4	7.2	7.6
Martin Ck nr Paradise								
	APR-JUL	2.332	2.7	6.01	34%	9.31	14.11	17.5
	MAY-JUL	0.122	0.49	3.8	31%	7.1	11.9	12.2
Humboldt R nr Imlay								
	APR-JUL	0.094	1.88	4	2%	55	129	188
	MAY-JUL	0.01	0.7	1	1%	48	117	141

1) 90% and 10% exceedance probabilities are actually 95% and 5%

2) Forecasts are for unimpaired flows. Actual flow will be dependent on management of upstream reservoirs and diversions

3) Median value used in place of average

Forecast Exceedance Probabilities for Risk Assessment Chance that actual volume will exceed forecast

Clover Valley & Franklin River	Forecast Period	90% (KAF)	70% (KAF)	50% (KAF)	% Avg	30% (KAF)	10% (KAF)	30yr Avg (KAF)
Franklin Ck nr Arthur								
	APR-JUL	2.3	3.2	3.9	57%	4.6	5.5	6.9

1) 90% and 10% exceedance probabilities are actually 95% and 5%

2) Forecasts are for unimpaired flows. Actual flow will be dependent on management of upstream reservoirs and diversions

3) Median value used in place of average

Forecast Exceedance Probabilities for Risk Assessment Chance that actual volume will exceed forecast

Snake River Basin	Forecast Period	90% (KAF)	70% (KAF)	50% (KAF)	% Avg	30% (KAF)	10% (KAF)	30yr Avg (KAF)
Salmon Falls Ck nr San Jacinto								
	MAY-JUL	6.8	12.8	18	37%	24	35	49
	MAY-SEP	7.9	14.2	19.6	37%	26	36	53

- 1) 90% and 10% exceedance probabilities are actually 95% and 5%
- 2) Forecasts are for unimpaired flows. Actual flow will be dependent on management of upstream reservoirs and diversions
- 3) Median value used in place of average

Forecast Exceedance Probabilities for Risk Assessment Chance that actual volume will exceed forecast

Owyhee River Basin	Forecast Period	90% (KAF)	70% (KAF)	50% (KAF)	% Avg	30% (KAF)	10% (KAF)	30yr Avg (KAF)
Owyhee R nr Gold Ck ²								
	MAY-JUL	0	0	0.31	3%	2	9.7	9.6
	MAY-SEP	0	0	0.04	0%	0.98	7.4	8.3

- 1) 90% and 10% exceedance probabilities are actually 95% and 5%
- 2) Forecasts are for unimpaired flows. Actual flow will be dependent on management of upstream reservoirs and diversions
- 3) Median value used in place of average

Forecast Exceedance Probabilities for Risk Assessment Chance that actual volume will exceed forecast

Eastern Nevada	Forecast Period	90% (KAF)	70% (KAF)	50% (KAF)	% Avg	30% (KAF)	10% (KAF)	30yr Avg (KAF)
Kingston Ck nr Austin								
	APR-JUL	0.072	0.93	2.2	61%	3.5	5.3	3.6
Lehman Ck nr Baker								
	APR-JUL	0.28	0.92	1.6	59%	2.01	2.63	2.72
	MAY-JUL	0.34	0.97	1.4	54%	1.83	2.5	2.61
Cleve Ck nr Ely								
	APR-JUL	0.044	0.93	2.2	50%	3.1	4.2	4.41
	MAY-JUL	0.037	1.09	1.9	52%	2.7	3.9	3.66
Step toe Ck nr Ely								
	APR-JUL	0.223	0.44	0.8	30%	1.16	1.7	2.7
	MAY-JUL	0.063	0.28	0.64	30%	1	1.54	2.1

- 1) 90% and 10% exceedance probabilities are actually 95% and 5%
- 2) Forecasts are for unimpaired flows. Actual flow will be dependent on management of upstream reservoirs and diversions
- 3) Median value used in place of average

Forecast Exceedance Probabilities for Risk Assessment Chance that actual volume will exceed forecast

Lower Colorado River Basin	Forecast Period	90% (KAF)	70% (KAF)	50% (KAF)	% Avg	30% (KAF)	10% (KAF)	30yr Avg (KAF)
Virgin R at Littlefield								
	APR-JUL	9.7	11.8	13.5	21%	15.4	18.7	65
	MAY-JUL	3.4	5.5	7.2	17%	9.1	12.4	43
Lake Powell Inflow ²								
	APR-JUL	5610	6500	7160	100%	7840	8920	7160
	MAY-JUL	4650	5540	6200	102%	6880	7960	6100
Virgin R nr Hurricane								
	APR-JUL	7.4	10.6	13.3	21%	16.5	22	63

MAY-JUL	3.2	6.4	9.1	22%	12.3	17.8	41
---------	-----	-----	-----	-----	------	------	----

- 1) 90% and 10% exceedance probabilities are actually 95% and 5%
- 2) Forecasts are for unimpaired flows. Actual flow will be dependent on management of upstream reservoirs and diversions
- 3) Median value used in place of average

Depth (in)	SWE (in)	Median (in)	% Median	Last Year SWE (in)	Last Year % Median
---------------	-------------	----------------	-------------	-----------------------	-----------------------

Basin Index	20%	4%
# of sites	8	8

Basin Index	25%	37%
# of sites	8	8

Basin Index	34%	25%
# of sites	9	9

Basin Index	31%	49%
# of sites	6	6

Basin Index

2

Lower Humboldt River	Network	Elevation	Depth (in)	SWE (in)	Median (in)	% Median	Last Year SWE (in)	Last Year % Median
LAMANCE CREEK	SNOTEL	6000'	0	0.0	0.0		0.0	
GOLCONDA	SNOTEL	6596'	0	0.0			0.0	
BUCKSKIN LOWER	SNOTEL	6915'	0	0.0	0.2	0%	0.0	0%
LEWIS PEAK	SNOTEL	7400'	0	0.0	1.7	0%	0.0	0%
TOE JAM	SNOTEL	7700'	1	0.7			0.0	
GRANITE PEAK	SNOTEL	8543'	23	8.1	19.5	42%	6.6	34%
BIG CREEK SUM	SNOTEL	8695'	31	10.4	15.9	65%	13.5	85%
Basin Index						50%		54%
# of sites						5		5

Snake River Basin	Network	Elevation	Depth (in)	SWE (in)	Median (in)	% Median	Last Year SWE (in)	Last Year % Median
SEVENTYSIX CREEK	SNOTEL	7100'	0	0.0	0.2	0%	0.0	0%
POLE CREEK R.S.	SNOTEL	8330'	39	13.9	19.3	72%	23.0	119%
BEAR CREEK	SNOTEL	8040'	26	9.5	18.6	51%	14.7	79%
Basin Index						61%		99%
# of sites						3		3

Eastern Nevada	Network	Elevation	Depth (in)	SWE (in)	Median (in)	% Median	Last Year SWE (in)	Last Year % Median
KALAMAZOO	SNOTEL	7744'	0	0.0			0.0	
BIRD CREEK	SNOTEL	7500'	0	0.0			0.0	
VACARRO SPRING	SNOTEL	7836'	1	0.1			0.0	
DIAMOND PEAK	SNOTEL	8033'	2	0.7	0.0		0.0	
BERRY CREEK	SNOTEL	9100'	28	7.9	15.4	51%	8.9	58%
WARD MOUNTAIN	SNOTEL	9200'	2	0.3	5.4	6%	0.0	0%
CAVE MOUNTAIN	SNOTEL	10583'	22	8.1			6.0	
Basin Index						43%		43%
# of sites						3		3

Lower Colorado River Basin	Network	Elevation	Depth (in)	SWE (in)	Median (in)	% Median	Last Year SWE (in)	Last Year % Median
BRISTLECONE TRAIL	SNOTEL	8979'	0	0.0			0.0	
LEE CANYON	SNOTEL	8626'	0	0.0			0.0	
RAINBOW CANYON	SNOTEL	7920'	0	0.0			0.0	

Basin Index

of sites

0

0

Lake Tahoe Basin	Network	Elevation	Depth (in)	SWE (in)	Median (in)	% Median	Last Year SWE (in)	Last Year % Median
ECHO PEAK	SNOTEL	7670'	16	7.1	22.2	32%	1.8	8%
ECHO SUMMIT	SC	7500'			20.1			
FALLEN LEAF	SNOTEL	6236'	0	0.0	0.0		0.0	
FREEL BENCH	SC	7132'						
GLENBROOK #2	SC	6966'						
HAGAN'S MEADOW	SNOTEL	7776'	0	0.0	0.0		0.0	
HEAVENLY VALLEY	SNOTEL	8582'	8	4.9	15.2	32%	0.0	0%
LAKE LUCILLE	SC	8188'						
MARLETTE LAKE	SNOTEL	7880'	14	3.1	11.2	28%	0.0	0%
RICHARDSONS #2	SC	6553'						
RUBICON #2	SNOTEL	7689'	8	2.4	19.0	13%	1.3	7%
TAHOE CITY CROSS	SNOTEL	6797'	0	0.0	0.0		0.0	
TRUCKEE, UPPER	SC	6396'						
WARD CREEK #2	SC	7100'						
WARD CREEK #3	SNOTEL	6655'	0	0.0	19.6	0%	0.0	0%

Basin Index

of sites

20%

8

4%

8

Truckee River Basin	Network	Elevation	Depth (in)	SWE (in)	Median (in)	% Median	Last Year SWE (in)	Last Year % Median
BIG MEADOW	SNOTEL	8249'	0	0.0	10.5	0%	0.0	0%
CASTLE CREEK	SC	7400'			35.1			
CSS LAB	SNOTEL	6855'	2	0.5	17.6	3%	0.0	0%
DONNER SUMMIT	SC	6900'	2	0.5	19.2	3%	0.9	5%
FORDYCE LAKE	SC	6500'	0	0.0	23.0	0%	0.0	0%
FURNACE FLAT	SC	6600'	15	7.5	35.4	21%	9.5	27%
INDEPENDENCE CAMP	SNOTEL	7003'	0	0.0	2.1	0%	0.0	0%
INDEPENDENCE CREEK	SNOTEL	6456'	0	0.0	0.0		0.0	
INDEPENDENCE LAKE	SNOTEL	8352'	50	18.0	44.3	41%	31.0	70%
LITTLE VALLEY	SC	6510'						
LITTLE VALLEY	SNOTEL	6510'	0	0.0				
MOUNT ROSE	SC	9000'						
MT ROSE SKI AREA	SNOTEL	8801'	20	8.1	36.3	22%	17.7	49%
SQUAW VALLEY #2	SC	7694'						
SQUAW VALLEY G.C.	SNOTEL	8029'	21	11.2	42.1	27%	8.2	19%
TRUCKEE #2	SNOTEL	6509'	0	0.0	0.0		0.0	
WEBBER LAKE	SC	7000'			20.8			
WEBBER PEAK	SC	8000'	36	15.0	39.5	38%		

Basin Index

of sites

20%

11

29%

11

Little Truckee River	Network	Elevation	Depth (in)	SWE (in)	Median (in)	% Median	Last Year SWE (in)	Last Year % Median
INDEPENDENCE CAMP	SNOTEL	7003'	0	0.0	2.1	0%	0.0	0%
INDEPENDENCE CREEK	SNOTEL	6456'	0	0.0	0.0		0.0	
INDEPENDENCE LAKE	SNOTEL	8352'	50	18.0	44.3	41%	31.0	70%
WEBBER LAKE	SC	7000'			20.8			
WEBBER PEAK	SC	8000'	36	15.0	39.5	38%		

Basin Index

of sites

39%

3

67%

3

Sage Hen Creek	Network	Elevation	Depth (in)	SWE (in)	Median (in)	% Median	Last Year SWE (in)	Last Year % Median
INDEPENDENCE CAMP	SNOTEL	7003'	0	0.0	2.1	0%	0.0	0%
INDEPENDENCE CREEK	SNOTEL	6456'	0	0.0	0.0		0.0	
INDEPENDENCE LAKE	SNOTEL	8352'	50	18.0	44.3	41%	31.0	70%
Basin Index						39%		67%
# of sites						3		3
Galena Creek	Network	Elevation	Depth (in)	SWE (in)	Median (in)	% Median	Last Year SWE (in)	Last Year % Median
MT ROSE SKI AREA	SNOTEL	8801'	20	8.1	36.3	22%	17.7	49%
MOUNT ROSE	SC	9000'						
Basin Index						22%		49%
# of sites						1		1
Steamboat Drainage	Network	Elevation	Depth (in)	SWE (in)	Median (in)	% Median	Last Year SWE (in)	Last Year % Median
LITTLE VALLEY	SNOTEL	6510'	0	0.0				
LITTLE VALLEY	SC	6510'						
MOUNT ROSE	SC	9000'						
MT ROSE SKI AREA	SNOTEL	8801'	20	8.1	36.3	22%	17.7	49%
Basin Index						22%		49%
# of sites						1		1
Pyramid Lake	Network	Elevation	Depth (in)	SWE (in)	Median (in)	% Median	Last Year SWE (in)	Last Year % Median
BIG MEADOW	SNOTEL	8249'	0	0.0	10.5	0%	0.0	0%
CSS LAB	SNOTEL	6855'	2	0.5	17.6	3%	0.0	0%
CASTLE CREEK	SC	7400'			35.1			
DONNER SUMMIT	SC	6900'	2	0.5	19.2	3%	0.9	5%
ECHO SUMMIT	SC	7500'			20.1			
ECHO PEAK	SNOTEL	7670'	16	7.1	22.2	32%	1.8	8%
FALLEN LEAF	SNOTEL	6236'	0	0.0	0.0		0.0	
FURNACE FLAT	SC	6600'	15	7.5	35.4	21%	9.5	27%
FREEL BENCH	SC	7132'						
FORDYCE LAKE	SC	6500'	0	0.0	23.0	0%	0.0	0%
GLENBROOK #2	SC	6966'						
HAGAN'S MEADOW	SNOTEL	7776'	0	0.0	0.0		0.0	
HEAVENLY VALLEY	SNOTEL	8582'	8	4.9	15.2	32%	0.0	0%
INDEPENDENCE CAMP	SNOTEL	7003'	0	0.0	2.1	0%	0.0	0%
INDEPENDENCE CREEK	SNOTEL	6456'	0	0.0	0.0		0.0	
INDEPENDENCE LAKE	SNOTEL	8352'	50	18.0	44.3	41%	31.0	70%
LAKE LUCILLE	SC	8188'						
LITTLE VALLEY	SNOTEL	6510'	0	0.0				
LITTLE VALLEY	SC	6510'						
MARLETTE LAKE	SNOTEL	7880'	14	3.1	11.2	28%	0.0	0%
MOUNT ROSE	SC	9000'						
MT ROSE SKI AREA	SNOTEL	8801'	20	8.1	36.3	22%	17.7	49%
RICHARDSONS #2	SC	6553'						
RUBICON #2	SNOTEL	7689'	8	2.4	19.0	13%	1.3	7%
SQUAW VALLEY #2	SC	7694'						
SQUAW VALLEY G.C.	SNOTEL	8029'	21	11.2	42.1	27%	8.2	19%
TAHOE CITY CROSS	SNOTEL	6797'	0	0.0	0.0		0.0	
TRUCKEE #2	SNOTEL	6509'	0	0.0	0.0		0.0	
TRUCKEE, UPPER	SC	6396'						
WARD CREEK #2	SC	7100'						
WARD CREEK #3	SNOTEL	6655'	0	0.0	19.6	0%	0.0	0%
WEBBER LAKE	SC	7000'			20.8			
WEBBER PEAK	SC	8000'	36	15.0	39.5	38%		
Basin Index						20%		22%

of sites

19

19

E.F. Carson River	Network	Elevation	Depth (in)	SWE (in)	Median (in)	% Median	Last Year SWE (in)	Last Year % Median
BLUE LAKES	SNOTEL	8057'	24	12.3	27.1	45%	8.8	32%
EBBETTS PASS	SNOTEL	8765'	20	8.5	27.8	31%	5.5	20%
MONITOR PASS	SNOTEL	8310'	0	0.0	5.0	0%	0.0	0%
POISON FLAT	SNOTEL	7736'	0	0.0	6.7	0%	0.0	0%
Basin Index						31%		21%
# of sites						4		4

W.F. Carson River	Network	Elevation	Depth (in)	SWE (in)	Median (in)	% Median	Last Year SWE (in)	Last Year % Median
BLUE LAKES	SNOTEL	8057'	24	12.3	27.1	45%	8.8	32%
BURNSIDE LAKE	SNOTEL	8129'	5	2.3	14.2	16%	0.0	0%
CARSON PASS	SNOTEL	8353'	27	11.9	28.6	42%	10.0	35%
CARSON PASS, UPPER	SC	8522'	25	9.0	19.2	47%	4.8	25%
CLEAR CREEK	SC	7284'						
EBBETTS PASS	SNOTEL	8765'	20	8.5	27.8	31%	5.5	20%
MONITOR PASS	SNOTEL	8310'	0	0.0	5.0	0%	0.0	0%
POISON FLAT	SNOTEL	7736'	0	0.0	6.7	0%	0.0	0%
SPRATT CREEK	SNOTEL	6115'	0	0.0	0.0		0.0	
Basin Index						34%		23%
# of sites						8		8

Carson River Basin	Network	Elevation	Depth (in)	SWE (in)	Median (in)	% Median	Last Year SWE (in)	Last Year % Median
BLUE LAKES	SNOTEL	8057'	24	12.3	27.1	45%	8.8	32%
BURNSIDE LAKE	SNOTEL	8129'	5	2.3	14.2	16%	0.0	0%
CARSON PASS	SNOTEL	8353'	27	11.9	28.6	42%	10.0	35%
CARSON PASS, UPPER	SC	8522'	25	9.0	19.2	47%	4.8	25%
CLEAR CREEK	SC	7284'						
EBBETTS PASS	SNOTEL	8765'	20	8.5	27.8	31%	5.5	20%
MONITOR PASS	SNOTEL	8310'	0	0.0	5.0	0%	0.0	0%
POISON FLAT	SNOTEL	7736'	0	0.0	6.7	0%	0.0	0%
SPRATT CREEK	SNOTEL	6115'	0	0.0	0.0		0.0	
Basin Index						34%		23%
# of sites						8		8

E. Walker Rv. Nr Bridgeport	Network	Elevation	Depth (in)	SWE (in)	Median (in)	% Median	Last Year SWE (in)	Last Year % Median
LOBDELL LAKE	SNOTEL	9233'	0	0.0	8.1	0%	0.0	0%
SAWMILL RIDGE	SC	8761'						
VIRGINIA LAKES RIDGE	SNOTEL	9445'	14	5.2	15.1	34%	6.5	43%
WILLOW FLAT	SC	8231'						
Basin Index						22%		28%
# of sites						2		2

W. Walker Rv. Nr Coleville	Network	Elevation	Depth (in)	SWE (in)	Median (in)	% Median	Last Year SWE (in)	Last Year % Median
LEAVITT LAKE	SNOTEL	9617'	65	25.0	58.6	43%	42.0	72%
LEAVITT MEADOWS	SNOTEL	7198'	0	0.0	0.0		0.0	
LOBDELL LAKE	SNOTEL	9233'	0	0.0	8.1	0%	0.0	0%
SONORA PASS	SNOTEL	8827'	17	6.9	18.6	37%	8.8	47%
SONORA PASS	SC	8779'			13.6			
Basin Index						37%		60%
# of sites						4		4

Walker Lake Rise	Network	Elevation	Depth (in)	SWE (in)	Median (in)	% Median	Last Year SWE (in)	Last Year % Median
-------------------------	---------	-----------	---------------	-------------	----------------	-------------	-----------------------	-----------------------

LEAVITT LAKE	SNOTEL	9617'	65	25.0	58.6	43%	42.0	72%
LEAVITT MEADOWS	SNOTEL	7198'	0	0.0	0.0		0.0	
LOBDELL LAKE	SNOTEL	9233'	0	0.0	8.1	0%	0.0	0%
SONORA PASS	SC	8779'			13.6			
SONORA PASS	SNOTEL	8827'	17	6.9	18.6	37%	8.8	47%
SAWMILL RIDGE	SC	8761'						
VIRGINIA LAKES RIDGE	SNOTEL	9445'	14	5.2	15.1	34%	6.5	43%
WILLOW FLAT	SC	8231'						

Basin Index

of sites

37%

5

57%

5

Lamoille Creek	Network	Elevation	Depth (in)	SWE (in)	Median (in)	% Median	Last Year SWE (in)	Last Year % Median
LAMOILLE #1	SC	7364'			0.8			
LAMOILLE #3	SNOTEL	7700'	1	0.2	5.9	3%	0.0	0%
LAMOILLE #5	SC	8814'			29.7			

Basin Index

of sites

3%

1

0%

1

S. Fork Humboldt	Network	Elevation	Depth (in)	SWE (in)	Median (in)	% Median	Last Year SWE (in)	Last Year % Median
AMERICAN BEAUTY	SNOLITE	7800'	6					
AMERICAN BEAUTY - AERIAL MARKER	SC	7800'						
CORRAL CANYON	SNOTEL	8500'	47	13.8	15.1	91%	8.8	58%
GREEN MOUNTAIN	SNOTEL	8000'	13	2.5	5.1	49%	0.0	0%
HARRISON PASS #1	SC	6600'						
SMITH CREEK	SC	7600'						
SMITH CREEK	SNOLITE	7600'	13					

Basin Index

of sites

81%

2

44%

2

Mary's River	Network	Elevation	Depth (in)	SWE (in)	Median (in)	% Median	Last Year SWE (in)	Last Year % Median
DRAW CREEK	SNOTEL	7200'	0	0.0	0.4	0%	0.0	0%

Basin Index

of sites

0%

1

0%

1

N. Fork Humboldt	Network	Elevation	Depth (in)	SWE (in)	Median (in)	% Median	Last Year SWE (in)	Last Year % Median
FRY CANYON	SC	6700'						
TREMEWAN RANCH	SC	5700'						

Basin Index

of sites

0

0

Humboldt Rv. At Palisades	Network	Elevation	Depth (in)	SWE (in)	Median (in)	% Median	Last Year SWE (in)	Last Year % Median
AMERICAN BEAUTY	SNOLITE	7800'	6					
AMERICAN BEAUTY - AERIAL MARKER	SC	7800'						
CORRAL CANYON	SNOTEL	8500'	47	13.8	15.1	91%	8.8	58%
DORSEY BASIN	SNOTEL	8100'	13	5.7	9.4	61%	0.0	0%
DRAW CREEK	SNOTEL	7200'	0	0.0	0.4	0%	0.0	0%
DRY CREEK	SC	6500'						
FRY CANYON	SC	6700'						
GREEN MOUNTAIN	SNOTEL	8000'	13	2.5	5.1	49%	0.0	0%
HARRISON PASS #1	SC	6600'						
LAMOILLE #1	SC	7364'			0.8			
LAMOILLE #3	SNOTEL	7700'	1	0.2	5.9	3%	0.0	0%
LAMOILLE #5	SC	8814'			29.7			
SMITH CREEK	SNOLITE	7600'	13					
SMITH CREEK	SC	7600'						

STAG MOUNTAIN AM	SC	7800'							
STAG MOUNTAIN	SNOLITE	7800'	0						
TENT MTN LOWER	SNOLITE	7000'	1						
TENT MTN UPPER	SNOLITE	7000'	47						
TENT MTN., LOWER - AERIAL MARKER	SC	7000'							
TENT MTN., UPPER- AERIAL MARKER	SC	8350'							
TREMEWAN RANCH	SC	5700'							
TROUT CREEK, LOWER	SC	6900'							
TROUT CREEK, UPPER - AM	SC	8500'							
TROUT CREEK UPPER	SNOLITE	7000'	22						
Basin Index							62%		25%
# of sites							5		5

Little Humboldt River	Network	Elevation	Depth (in)	SWE (in)	Median (in)	% Median	Last Year SWE (in)	Last Year % Median
BUCKSKIN LOWER	SNOTEL	6915'	0	0.0	0.2	0%	0.0	0%
GRANITE PEAK	SNOTEL	8543'	23	8.1	19.5	42%	6.6	34%
LAMANCE CREEK	SNOTEL	6000'	0	0.0	0.0		0.0	
SNOW STORM MOUNTAIN-AM	SC	7420'						
SNOWSTORM MTN	SNOLITE	7420'	14					
Basin Index							41%	34%
# of sites							3	3

Martin Creek	Network	Elevation	Depth (in)	SWE (in)	Median (in)	% Median	Last Year SWE (in)	Last Year % Median
BUCKSKIN LOWER	SNOTEL	6915'	0	0.0	0.2	0%	0.0	0%
GRANITE PEAK	SNOTEL	8543'	23	8.1	19.5	42%	6.6	34%
LAMANCE CREEK	SNOTEL	6000'	0	0.0	0.0		0.0	
Basin Index							41%	34%
# of sites							3	3

Reese River	Network	Elevation	Depth (in)	SWE (in)	Median (in)	% Median	Last Year SWE (in)	Last Year % Median
BIG CREEK CAMPGROUND	SC	6696'						
BIG CREEK MINE	SC	7735'						
BIG CREEK SUM	SNOTEL	8695'	31	10.4	15.9	65%	13.5	85%
LEWIS PEAK	SNOTEL	7400'	0	0.0	1.7	0%	0.0	0%
Basin Index							59%	77%
# of sites							2	2

Rock Creek	Network	Elevation	Depth (in)	SWE (in)	Median (in)	% Median	Last Year SWE (in)	Last Year % Median
MIDAS	SNOLITE	7000'	0					
MIDAS	SC	7200'						
TOE JAM - AERIAL MARKER	SC	7700'						
TOE JAM	SNOTEL	7700'	1	0.7			0.0	
Basin Index							0	0
# of sites								

Lower Humboldt River Basin	Network	Elevation	Depth (in)	SWE (in)	Median (in)	% Median	Last Year SWE (in)	Last Year % Median
LAMANCE CREEK	SNOTEL	6000'	0	0.0	0.0		0.0	
GOLCONDA	SNOTEL	6596'	0	0.0			0.0	
BUCKSKIN LOWER	SNOTEL	6915'	0	0.0	0.2	0%	0.0	0%
LEWIS PEAK	SNOTEL	7400'	0	0.0	1.7	0%	0.0	0%
TOE JAM	SNOTEL	7700'	1	0.7			0.0	
GRANITE PEAK	SNOTEL	8543'	23	8.1	19.5	42%	6.6	34%
BIG CREEK SUM	SNOTEL	8695'	31	10.4	15.9	65%	13.5	85%
MIDAS	SNOLITE	7000'	0					
MIDAS	SC	7200'						

Basin Index			50%				54%	
# of sites			5				5	
Franklin River	Network	Elevation	Depth (in)	SWE (in)	Median (in)	% Median	Last Year SWE (in)	Last Year % Median
POLE CANYON	SNOTEL	7700'	0	0.0				
POLE CANYON #2	SC	7700'						
ROBINSON LAKE	SNOLITE	9200'	68					
ROBINSON LAKE - AERIAL MARKER	SC	9200'						
Basin Index			0				0	
# of sites								
Clover Valley	Network	Elevation	Depth (in)	SWE (in)	Median (in)	% Median	Last Year SWE (in)	Last Year % Median
HOLE-IN-MOUNTAIN	SNOTEL	7900'	24	9.8	9.2	107%	0.0	0%
POLE CANYON	SNOTEL	7700'	0	0.0				
POLE CANYON #2	SC	7700'						
Basin Index			107%				0%	
# of sites			1				1	
Owyhee River nr Owyhee	Network	Elevation	Depth (in)	SWE (in)	Median (in)	% Median	Last Year SWE (in)	Last Year % Median
BIG BEND	SNOTEL	6700'	0	0.0	0.0		0.0	
FAWN CREEK	SNOTEL	7000'	16	5.9	11.4	52%	0.0	0%
GOLD CREEK	SC	6707'						
LAUREL DRAW	SNOTEL	6697'	0	0.0	0.0		0.0	
Basin Index			52%				0%	
# of sites			3				3	
Owyhee R. nr Gold Creek	Network	Elevation	Depth (in)	SWE (in)	Median (in)	% Median	Last Year SWE (in)	Last Year % Median
BIG BEND	SNOTEL	6700'	0	0.0	0.0		0.0	
GOLD CREEK	SC	6707'						
Basin Index			1				1	
# of sites								
S. Fork Owyhee River	Network	Elevation	Depth (in)	SWE (in)	Median (in)	% Median	Last Year SWE (in)	Last Year % Median
COLUMBIA BASIN	SNOLITE	6650'	0					
COLUMBIA BASIN - AERIAL MARKER	SC	6650'						
JACK CREEK, LOWER	SC	6800'						
JACK CREEK UPPER	SNOTEL	7250'	30	8.8	14.4	61%	4.9	34%
Basin Index			61%				34%	
# of sites			1				1	
Salmon Falls Creek	Network	Elevation	Depth (in)	SWE (in)	Median (in)	% Median	Last Year SWE (in)	Last Year % Median
BEAR CREEK	SNOTEL	8040'	26	9.5	18.6	51%	14.7	79%
BOSTETTER R.S.	SNOTEL	7500'	24	4.2	9.8	43%	9.0	92%
JAKES CREEK - AERIAL MARKER	SC	7000'						
LANGFORD FLAT CREEK	SC	5980'			0.0		0.0	
JAKES CREEK	SNOLITE	7000'	0					
MAGIC MOUNTAIN	SNOTEL	6880'	30	13.2	10.6	125%	8.4	79%
O'NEIL CREEK	SC	6480'			0.0			
POLE CREEK R.S.	SNOTEL	8330'	39	13.9	19.3	72%	23.0	119%
WILSON CREEK	SNOTEL	7120'	0	0.0	7.0	0%	0.0	0%
Basin Index			62%				84%	
# of sites			5				5	

Kingston Creek	Network	Elevation	Depth (in)	SWE (in)	Median (in)	% Median	Last Year SWE (in)	Last Year % Median
BIG CREEK SUM	SNOTEL	8695'	31	10.4	15.9	65%	13.5	85%
Basin Index						65%		85%
# of sites						1		1
Steptoe Valley	Network	Elevation	Depth (in)	SWE (in)	Median (in)	% Median	Last Year SWE (in)	Last Year % Median
BERRY CREEK	SNOTEL	9100'	28	7.9	15.4	51%	8.9	58%
BIRD CREEK	SNOTEL	7500'	0	0.0			0.0	
BIRD CREEK	SC	7500'						
MURRAY SUMMIT	SC	7250'						
WARD MOUNTAIN	SNOTEL	9200'	2	0.3	5.4	6%	0.0	0%
Basin Index						39%		43%
# of sites						2		2
Spring Mountains	Network	Elevation	Depth (in)	SWE (in)	Median (in)	% Median	Last Year SWE (in)	Last Year % Median
BRISTLECONE TRAIL	SNOTEL	8979'	0	0.0			0.0	
CORDUROY FLAT AERIAL	SC	8720'						
CORDUROY FLAT	SNOLITE	8720'	0					
DEFIANCE MINES, AERIAL MARKER	SC	9200'						
DEFIANCE MINES	SNOLITE	9200'	31					
KYLE CANYON	SC	8200'						
LEE CANYON #2	SC	9111'						
LEE CANYON #3	SC	8400'						
LEE CANYON	SNOTEL	8626'	0	0.0			0.0	
RAINBOW CANYON #2	SC	8100'						
RAINBOW CANYON	SNOTEL	7920'	0	0.0			0.0	
WHITE RIVER #1	SC	7400'						
WHITE RIVER NV	SNOLITE	7440'	0					
Basin Index							0	0
# of sites								
Quinn River	Network	Elevation	Depth (in)	SWE (in)	Median (in)	% Median	Last Year SWE (in)	Last Year % Median
DISASTER PEAK	SNOTEL	6500'	0	0.0	0.0		0.0	
QUINN RIDGE AM	SC	6270'						
Basin Index							1	1
# of sites								
McDermitt Creek	Network	Elevation	Depth (in)	SWE (in)	Median (in)	% Median	Last Year SWE (in)	Last Year % Median
DISASTER PEAK	SNOTEL	6500'	0	0.0	0.0		0.0	
QUINN RIDGE AM	SC	6270'						
Basin Index							1	1
# of sites								
N Great Basin	Network	Elevation	Depth (in)	SWE (in)	Median (in)	% Median	Last Year SWE (in)	Last Year % Median
BALD MTN AM	SNOTEL	6720'						
BALD MT.	SC	6720'						
DISASTER PEAK	SNOTEL	6500'	0	0.0	0.0		0.0	
FORTY NINE MTN.	SC	6000'						
HAYS CANYON	SC	6400'						
LITTLE BALLY MT. - AERIAL MARKER	SC	6580'						
QUINN RIDGE AM	SC	6270'						
SHELDON	SCAN	5860'	0	0.0	0.0		0.0	
Basin Index							2	2
# of sites								

Basinwide Summary: May 1, 2014
(Averages/Medians based on 1981-2010 reference period)

			Monthly Total Precipitation for April 2014					Water Year to Date Precipitation through April 2014				
Lake Tahoe	Network	Elevation	Current (in)	Average (in)	% Average	Last Year (in)	Last Year % Avg	Current (in)	Average (in)	% Average	Last Year (in)	Last Year % Avg
HEAVENLY VALLEY	SNOTEL	8582'	2	2.8	71%	2	71%	20.2	28.91	70%	23.4	81%
HAGAN'S MEADOW	SNOTEL	7776'	1	2.34	43%	2	85%	18.3	26.71	69%	21.9	82%
MARLETTE LAKE	SNOTEL	7880'	1.9	2.64	72%	0.9	34%	22.6	29.82	76%	24.2	81%
ECHO PEAK	SNOTEL	7670'	3.2	4.1	78%	3.5	85%	33.9	53	64%	42.7	81%
RUBICON #2	SNOTEL	7689'	1.5	3.32	45%	1.3	39%	21.4	37.42	57%	28.6	76%
TAHOE CITY CROSS	SNOTEL	6797'	1.4	2.42	58%	0.8	33%	20.7	32.62	63%	26.9	82%
WARD CREEK #3	SNOTEL	6655'	3.1	4.97	62%	1.8	36%	37.9	62.69	60%	51.5	82%
FALLEN LEAF	SNOTEL	6236'	1.3	1.84	71%	0.9	49%	21.8	28.45	77%	26.2	92%
Basin Index					63%		54%			66%		82%
# of sites					8		8			8		8
Truckee River	Network	Elevation	Current (in)	Average (in)	% Average	Last Year (in)	Last Year % Avg	Current (in)	Average (in)	% Average	Last Year (in)	Last Year % Avg
MT ROSE SKI AREA	SNOTEL	8801'	2.3	3.94	58%	2.4	61%	26.1	49.29	53%	40.3	82%
INDEPENDENCE LAKE	SNOTEL	8352'	1.7	3.84	44%	0.9	23%	24.1	42.56	57%	33.7	79%
BIG MEADOW	SNOTEL	8249'	1.5	2.44	61%	1.3	53%	15.2	27.48	55%	20.7	75%
SQUAW VALLEY G.C.	SNOTEL	8029'	4.1	5.17	79%	1.8	35%	32.5	58.06	56%	41	71%
INDEPENDENCE CAMP	SNOTEL	7003'	0.6	2.36	25%	0.4	17%	15.6	29.32	53%	18.1	62%
CSS LAB	SNOTEL	6855'	3.5	5.22	67%	1.3	25%	35.7	59.74	60%	44.6	75%
INDEPENDENCE CREEK	SNOTEL	6456'	0.7	2.14	33%	0.6	28%	13.7	29.13	47%	19.1	66%
TRUCKEE #2	SNOTEL	6509'	1.4	2.43	58%	0.5	21%	17.4	31	56%	23.7	76%
Basin Index					57%		33%			55%		74%
# of sites					8		8			8		8
Carson River	Network	Elevation	Current (in)	Average (in)	% Average	Last Year (in)	Last Year % Avg	Current (in)	Average (in)	% Average	Last Year (in)	Last Year % Avg
EBBETTS PASS	SNOTEL	8765'	3.2	4.54	70%	2.5	55%	28.3	47.14	60%	38	81%
HORSE MEADOW	SNOTEL	8557'	0.5	2.02	25%	1.3	64%	15.8	23.94	66%	17.1	71%
CARSON PASS	SNOTEL	8353'	2.4	4.4	55%	1.6	36%	23.1	42.46	54%	29.4	69%
MONITOR PASS	SNOTEL	8310'	1	1.57	64%	1.2	76%	11.2	19.04	59%	15.3	80%
BURNSIDE LAKE	SNOTEL	8129'	1.8	3.36	54%	1.3	39%	22.9	39.46	58%	28.8	73%
FORESTDALE CREEK	SNOTEL	8017'	2.3	4.62	50%	1.6	35%	27	45.83	59%	33.7	74%
BLUE LAKES	SNOTEL	8057'	2.1	3.96	53%	1.2	30%	25	39.38	63%	25.8	66%
POISON FLAT	SNOTEL	7736'	1	2.5	40%	1.6	64%	13.2	27.81	47%	19.5	70%
SPRATT CREEK	SNOTEL	6115'	0.7	2.11	33%	1.2	57%	19.2	27.39	70%	20.6	75%
Basin Index					52%		46%			59%		73%
# of sites					9		9			9		9
Walker River	Network	Elevation	Current (in)	Average (in)	% Average	Last Year (in)	Last Year % Avg	Current (in)	Average (in)	% Average	Last Year (in)	Last Year % Avg
LEAVITT LAKE	SNOTEL	9617'	2.8	4.45	63%	1.3	29%	26.9	49.16	55%	38.9	79%
LOBDELL LAKE	SNOTEL	9233'	1.2	1.84	65%	1.9	103%	11.4	20.87	55%	16.6	80%
VIRGINIA LAKES RIDGE	SNOTEL	9445'	1.4	1.76	80%	1.5	85%	13.1	23.84	55%	17	71%
SUMMIT MEADOW	SNOTEL	9313'	1.2	1.82	66%	1.5	82%	13.3	21.57	62%	15.3	71%
SONORA PASS	SNOTEL	8827'	1.4	2.77	51%	1.1	40%	16.9	32.27	52%	23.2	72%
LEAVITT MEADOWS	SNOTEL	7198'	0.8	1.97	41%	0.6	30%	15.9	27.63	58%	21.6	78%
Basin Index					60%		54%			56%		76%
# of sites					6		6			6		6
Northern Great Basin	Network	Elevation	Current (in)	Average (in)	% Average	Last Year (in)	Last Year % Avg	Current (in)	Average (in)	% Average	Last Year (in)	Last Year % Avg
DISASTER PEAK	SNOTEL	6500'	2.3	1.85	124%	0.8	43%	11.9	17.39	68%	11.6	67%
SHELDON	SCAN	5860'	0.6	0.94	64%	0.5	53%	3	6.49	46%	5.8	89%
SUMMIT LK	SNOTEL	7609'	2			1.2		12.5			14	
Basin Index					104%		47%			62%		73%
# of sites					2		2			2		2
Upper Humboldt River	Network	Elevation	Current (in)	Average (in)	% Average	Last Year (in)	Last Year % Avg	Current (in)	Average (in)	% Average	Last Year (in)	Last Year % Avg
CORRAL CANYON	SNOTEL	8500'	3.8	4.08	93%	2.2	54%	21.9	23.02	95%	18	78%
DORSEY BASIN	SNOTEL	8100'	4	4.28	93%	2.7	63%	22.2	24.86	89%	20	80%
GREEN MOUNTAIN	SNOTEL	8000'	3.7	4.04	92%	2.7	67%	23.2	24.54	95%	19.4	79%
LAMOILLE #3	SNOTEL	7700'	3	4.17	72%	3.4	82%	19.4	23.87	81%	17.6	74%
DRAW CREEK	SNOTEL	7200'	1.7	1.66	102%	0.9	54%	13.2	15.45	85%	12.4	80%
Basin Index					89%		65%			89%		78%
# of sites					5		5			5		5
Lower Humboldt River	Network	Elevation	Current (in)	Average (in)	% Average	Last Year (in)	Last Year % Avg	Current (in)	Average (in)	% Average	Last Year (in)	Last Year % Avg
LAMANCE CREEK	SNOTEL	6000'	1.5	2.93	51%	0.9	31%	16.9	22.74	74%	18.3	80%
GOLCONDA	SNOTEL	6596'	1.1			1.4		17.1			14.5	
BUCKSKIN LOWER	SNOTEL	6915'	2.6	3.04	86%	1.8	59%	16.2	18.58	87%	16.2	87%
LEWIS PEAK	SNOTEL	7400'	1.5	4.04	37%	1	25%	14.7	20.14	73%	14.4	71%
TOE JAM	SNOTEL	7700'	2			1		16.7			16.1	
GRANITE PEAK	SNOTEL	8543'	1.7	3.54	48%	1.7	48%	19.2	26.48	73%	20.3	77%
BIG CREEK SUM	SNOTEL	8695'	2.1	3.32	63%	2.5	75%	14.2	19.07	74%	14.9	78%
Basin Index					56%		47%			76%		79%

# of sites			5		5			5			5	
Clover Valley & Franklin River	Network	Elevation	Current (in)	Average (in)	% Average	Last Year (in)	Last Year % Avg	Current (in)	Average (in)	% Average	Last Year (in)	Last Year % Avg
HOLE-IN-MOUNTAIN	SNOTEL	7900'	3.3	3.6	92%	2.7	75%	27.8	26.98	103%	18	67%
Basin Index					92%		75%			103%		67%
# of sites					1		1			1		1
Snake River Basin	Network	Elevation	Current (in)	Average (in)	% Average	Last Year (in)	Last Year % Avg	Current (in)	Average (in)	% Average	Last Year (in)	Last Year % Avg
SEVENTYSIX CREEK	SNOTEL	7100'	2.4	2.09	115%	1.1	53%	12.2	15.79	77%	12.8	81%
POLE CREEK R.S.	SNOTEL	8330'	1.6	2.38	67%	2.5	105%	10.4	14.09	74%	12.3	87%
BEAR CREEK	SNOTEL	8040'	3.1	4.38	71%	4.2	96%	20	26.21	76%	25.9	99%
Basin Index					80%		88%			76%		91%
# of sites					3		3			3		3
Owyhee River Basin	Network	Elevation	Current (in)	Average (in)	% Average	Last Year (in)	Last Year % Avg	Current (in)	Average (in)	% Average	Last Year (in)	Last Year % Avg
JACKS PEAK	SNOTEL	8420'	3.2	3.93	81%	2	51%	21.1	28.44	74%	20.7	73%
JACK CREEK UPPER	SNOTEL	7250'	2.7	3.24	83%	1.9	59%	18.8	22.26	84%	18.5	83%
FAWN CREEK	SNOTEL	7000'	3.3	4.44	74%	1.9	43%	20.4	26.02	78%	21.1	81%
BIG BEND	SNOTEL	6700'	1.2	1.97	61%	1.2	61%	9.4	12.24	77%	11.2	92%
LAUREL DRAW	SNOTEL	6697'	2.1	3.01	70%	2.1	70%	16.9	20.68	82%	16.7	81%
TAYLOR CANYON	SNOTEL	6200'	0.9	1.32	68%	0.9	68%	7.5	9.43	80%	7.4	78%
Basin Index					75%		56%			79%		80%
# of sites					6		6			6		6
Eastern Nevada	Network	Elevation	Current (in)	Average (in)	% Average	Last Year (in)	Last Year % Avg	Current (in)	Average (in)	% Average	Last Year (in)	Last Year % Avg
KALAMAZOO	SNOTEL	7744'	1.8			2.1		11.6			10.8	
BIRD CREEK	SNOTEL	7500'	1.6			0.7		8.4			7.3	
VACARRO SPRING	SNOTEL	7836'	1.9			1.8		10.2			12	
DIAMOND PEAK	SNOTEL	8033'	2.6	3.03	86%	1.9	63%	12.8	15.88	81%	13.6	86%
BERRY CREEK	SNOTEL	9100'	2.5	3.4	74%	4	118%	15.4	18.83	82%	15.2	81%
WARD MOUNTAIN	SNOTEL	9200'	1.6	2.49	64%	1	40%	10.8	16.62	65%	10.2	61%
CAVE MOUNTAIN	SNOTEL	10583'	1.6			2		12.3			10.8	
Basin Index					75%		77%			76%		76%
# of sites					3		3			3		3
Lower Colorado River Basin	Network	Elevation	Current (in)	Average (in)	% Average	Last Year (in)	Last Year % Avg	Current (in)	Average (in)	% Average	Last Year (in)	Last Year % Avg
BRISTLECONE TRAIL	SNOTEL	8979'	0.5			0.8		6.8			8.4	
LEE CANYON	SNOTEL	8626'	1			0.6		9.4			8.1	
RAINBOW CANYON	SNOTEL	7920'	0.7			0.5		9.6			9.2	
Basin Index												
# of sites					0		0			0		0
Lake Tahoe Basin	Network	Elevation	Current (in)	Average (in)	% Average	Last Year (in)	Last Year % Avg	Current (in)	Average (in)	% Average	Last Year (in)	Last Year % Avg
ECHO PEAK	SNOTEL	7670'	3.2	4.1	78%	3.5	85%	33.9	53	64%	42.7	81%
FALLEN LEAF	SNOTEL	6236'	1.3	1.84	71%	0.9	49%	21.8	28.45	77%	26.2	92%
HAGAN'S MEADOW	SNOTEL	7776'	1	2.34	43%	2	85%	18.3	26.71	69%	21.9	82%
HEAVENLY VALLEY	SNOTEL	8582'	2	2.8	71%	2	71%	20.2	28.91	70%	23.4	81%
MARLETTE LAKE	SNOTEL	7880'	1.9	2.64	72%	0.9	34%	22.6	29.82	76%	24.2	81%
RUBICON #2	SNOTEL	7689'	1.5	3.32	45%	1.3	39%	21.4	37.42	57%	28.6	76%
TAHOE CITY CROSS	SNOTEL	6797'	1.4	2.42	58%	0.8	33%	20.7	32.62	63%	26.9	82%
WARD CREEK #3	SNOTEL	6655'	3.1	4.97	62%	1.8	36%	37.9	62.69	60%	51.5	82%
Basin Index					63%		54%			66%		82%
# of sites					8		8			8		8
Truckee River Basin	Network	Elevation	Current (in)	Average (in)	% Average	Last Year (in)	Last Year % Avg	Current (in)	Average (in)	% Average	Last Year (in)	Last Year % Avg
BIG MEADOW	SNOTEL	8249'	1.5	2.44	61%	1.3	53%	15.2	27.48	55%	20.7	75%
CSS LAB	SNOTEL	6855'	3.5	5.22	67%	1.3	25%	35.7	59.74	60%	44.6	75%
INDEPENDENCE CAMP	SNOTEL	7003'	0.6	2.36	25%	0.4	17%	15.6	29.32	53%	18.1	62%
INDEPENDENCE CREEK	SNOTEL	6456'	0.7	2.14	33%	0.6	28%	13.7	29.13	47%	19.1	66%
INDEPENDENCE LAKE	SNOTEL	8352'	1.7	3.84	44%	0.9	23%	24.1	42.56	57%	33.7	79%
LITTLE VALLEY	SNOTEL	6510'	1.2					19				
MT ROSE SKI AREA	SNOTEL	8801'	2.3	3.94	58%	2.4	61%	26.1	49.29	53%	40.3	82%
SQUAW VALLEY G.C.	SNOTEL	8029'	4.1	5.17	79%	1.8	35%	32.5	58.06	56%	41	71%
TRUCKEE #2	SNOTEL	6509'	1.4	2.43	58%	0.5	21%	17.4	31	56%	23.7	76%
Basin Index					57%		33%			55%		74%
# of sites					8		8			8		8
Little Truckee River	Network	Elevation	Current (in)	Average (in)	% Average	Last Year (in)	Last Year % Avg	Current (in)	Average (in)	% Average	Last Year (in)	Last Year % Avg
INDEPENDENCE CAMP	SNOTEL	7003'	0.6	2.36	25%	0.4	17%	15.6	29.32	53%	18.1	62%
INDEPENDENCE CREEK	SNOTEL	6456'	0.7	2.14	33%	0.6	28%	13.7	29.13	47%	19.1	66%
INDEPENDENCE LAKE	SNOTEL	8352'	1.7	3.84	44%	0.9	23%	24.1	42.56	57%	33.7	79%
Basin Index					36%		23%			53%		70%
# of sites					3		3			3		3

Sage Hen Creek	Network	Elevation	Current (in)	Average (in)	% Average	Last Year (in)	Last Year % Avg	Current (in)	Average (in)	% Average	Last Year (in)	Last Year % Avg
INDEPENDENCE CAMP	SNOTEL	7003'	0.6	2.36	25%	0.4	17%	15.6	29.32	53%	18.1	62%
INDEPENDENCE CREEK	SNOTEL	6456'	0.7	2.14	33%	0.6	28%	13.7	29.13	47%	19.1	66%
INDEPENDENCE LAKE	SNOTEL	8352'	1.7	3.84	44%	0.9	23%	24.1	42.56	57%	33.7	79%
Basin Index					36%		23%			53%		70%
# of sites					3		3			3		3
Galena Creek	Network	Elevation	Current (in)	Average (in)	% Average	Last Year (in)	Last Year % Avg	Current (in)	Average (in)	% Average	Last Year (in)	Last Year % Avg
MT ROSE SKI AREA	SNOTEL	8801'	2.3	3.94	58%	2.4	61%	26.1	49.29	53%	40.3	82%
Basin Index					58%		61%			53%		82%
# of sites					1		1			1		1
Steamboat Drainage	Network	Elevation	Current (in)	Average (in)	% Average	Last Year (in)	Last Year % Avg	Current (in)	Average (in)	% Average	Last Year (in)	Last Year % Avg
LITTLE VALLEY	SNOTEL	6510'	1.2					19				
MT ROSE SKI AREA	SNOTEL	8801'	2.3	3.94	58%	2.4	61%	26.1	49.29	53%	40.3	82%
Basin Index					58%		61%			53%		82%
# of sites					1		1			1		1
Pyramid Lake	Network	Elevation	Current (in)	Average (in)	% Average	Last Year (in)	Last Year % Avg	Current (in)	Average (in)	% Average	Last Year (in)	Last Year % Avg
BIG MEADOW	SNOTEL	8249'	1.5	2.44	61%	1.3	53%	15.2	27.48	55%	20.7	75%
CSS LAB	SNOTEL	6855'	3.5	5.22	67%	1.3	25%	35.7	59.74	60%	44.6	75%
ECHO PEAK	SNOTEL	7670'	3.2	4.1	78%	3.5	85%	33.9	53	64%	42.7	81%
FALLEN LEAF	SNOTEL	6236'	1.3	1.84	71%	0.9	49%	21.8	28.45	77%	26.2	92%
HAGAN'S MEADOW	SNOTEL	7776'	1	2.34	43%	2	85%	18.3	26.71	69%	21.9	82%
HEAVENLY VALLEY	SNOTEL	8582'	2	2.8	71%	2	71%	20.2	28.91	70%	23.4	81%
INDEPENDENCE CAMP	SNOTEL	7003'	0.6	2.36	25%	0.4	17%	15.6	29.32	53%	18.1	62%
INDEPENDENCE CREEK	SNOTEL	6456'	0.7	2.14	33%	0.6	28%	13.7	29.13	47%	19.1	66%
INDEPENDENCE LAKE	SNOTEL	8352'	1.7	3.84	44%	0.9	23%	24.1	42.56	57%	33.7	79%
LITTLE VALLEY	SNOTEL	6510'	1.2					19				
MARLETTE LAKE	SNOTEL	7880'	1.9	2.64	72%	0.9	34%	22.6	29.82	76%	24.2	81%
MT ROSE SKI AREA	SNOTEL	8801'	2.3	3.94	58%	2.4	61%	26.1	49.29	53%	40.3	82%
RUBICON #2	SNOTEL	7689'	1.5	3.32	45%	1.3	39%	21.4	37.42	57%	28.6	76%
SQUAW VALLEY G.C.	SNOTEL	8029'	4.1	5.17	79%	1.8	35%	32.5	58.06	56%	41	71%
TAHOE CITY CROSS	SNOTEL	6797'	1.4	2.42	58%	0.8	33%	20.7	32.62	63%	26.9	82%
TRUCKEE #2	SNOTEL	6509'	1.4	2.43	58%	0.5	21%	17.4	31	56%	23.7	76%
WARD CREEK #3	SNOTEL	6655'	3.1	4.97	62%	1.8	36%	37.9	62.69	60%	51.5	82%
Basin Index					60%		43%			60%		78%
# of sites					16		16			16		16
E.F. Carson River	Network	Elevation	Current (in)	Average (in)	% Average	Last Year (in)	Last Year % Avg	Current (in)	Average (in)	% Average	Last Year (in)	Last Year % Avg
BLUE LAKES	SNOTEL	8057'	2.1	3.96	53%	1.2	30%	25	39.38	63%	25.8	66%
EBBETTS PASS	SNOTEL	8765'	3.2	4.54	70%	2.5	55%	28.3	47.14	60%	38	81%
MONITOR PASS	SNOTEL	8310'	1	1.57	64%	1.2	76%	11.2	19.04	59%	15.3	80%
POISON FLAT	SNOTEL	7736'	1	2.5	40%	1.6	64%	13.2	27.81	47%	19.5	70%
Basin Index					58%		52%			58%		74%
# of sites					4		4			4		4
W.F. Carson River	Network	Elevation	Current (in)	Average (in)	% Average	Last Year (in)	Last Year % Avg	Current (in)	Average (in)	% Average	Last Year (in)	Last Year % Avg
BLUE LAKES	SNOTEL	8057'	2.1	3.96	53%	1.2	30%	25	39.38	63%	25.8	66%
BURNSIDE LAKE	SNOTEL	8129'	1.8	3.36	54%	1.3	39%	22.9	39.46	58%	28.8	73%
CARSON PASS	SNOTEL	8353'	2.4	4.4	55%	1.6	36%	23.1	42.46	54%	29.4	69%
EBBETTS PASS	SNOTEL	8765'	3.2	4.54	70%	2.5	55%	28.3	47.14	60%	38	81%
MONITOR PASS	SNOTEL	8310'	1	1.57	64%	1.2	76%	11.2	19.04	59%	15.3	80%
POISON FLAT	SNOTEL	7736'	1	2.5	40%	1.6	64%	13.2	27.81	47%	19.5	70%
SPRATT CREEK	SNOTEL	6115'	0.7	2.11	33%	1.2	57%	19.2	27.39	70%	20.6	75%
Basin Index					54%		47%			59%		73%
# of sites					7		7			7		7
Carson River Basin	Network	Elevation	Current (in)	Average (in)	% Average	Last Year (in)	Last Year % Avg	Current (in)	Average (in)	% Average	Last Year (in)	Last Year % Avg
BLUE LAKES	SNOTEL	8057'	2.1	3.96	53%	1.2	30%	25	39.38	63%	25.8	66%
BURNSIDE LAKE	SNOTEL	8129'	1.8	3.36	54%	1.3	39%	22.9	39.46	58%	28.8	73%
CARSON PASS	SNOTEL	8353'	2.4	4.4	55%	1.6	36%	23.1	42.46	54%	29.4	69%
EBBETTS PASS	SNOTEL	8765'	3.2	4.54	70%	2.5	55%	28.3	47.14	60%	38	81%
MONITOR PASS	SNOTEL	8310'	1	1.57	64%	1.2	76%	11.2	19.04	59%	15.3	80%
POISON FLAT	SNOTEL	7736'	1	2.5	40%	1.6	64%	13.2	27.81	47%	19.5	70%
SPRATT CREEK	SNOTEL	6115'	0.7	2.11	33%	1.2	57%	19.2	27.39	70%	20.6	75%
Basin Index					54%		47%			59%		73%
# of sites					7		7			7		7
E. Walker Rv. Nr Bridgeport	Network	Elevation	Current (in)	Average (in)	% Average	Last Year (in)	Last Year % Avg	Current (in)	Average (in)	% Average	Last Year (in)	Last Year % Avg
LOBDELL LAKE	SNOTEL	9233'	1.2	1.84	65%	1.9	103%	11.4	20.87	55%	16.6	80%
VIRGINIA LAKES RIDGE	SNOTEL	9445'	1.4	1.76	80%	1.5	85%	13.1	23.84	55%	17	71%
Basin Index					72%		94%			55%		75%
# of sites					2		2			2		2

W. Walker Rv. Nr Coleville	Network	Elevation	Current (in)	Average (in)	% Average	Last Year (in)	Last Year % Avg	Current (in)	Average (in)	% Average	Last Year (in)	Last Year % Avg
LEAVITT LAKE	SNOTEL	9617'	2.8	4.45	63%	1.3	29%	26.9	49.16	55%	38.9	79%
LEAVITT MEADOWS	SNOTEL	7198'	0.8	1.97	41%	0.6	30%	15.9	27.63	58%	21.6	78%
LOBDELL LAKE	SNOTEL	9233'	1.2	1.84	65%	1.9	103%	11.4	20.87	55%	16.6	80%
SONORA PASS	SNOTEL	8827'	1.4	2.77	51%	1.1	40%	16.9	32.27	52%	23.2	72%
Basin Index					56%		44%			55%		77%
# of sites					4		4			4		4
Walker Lake Rise	Network	Elevation	Current (in)	Average (in)	% Average	Last Year (in)	Last Year % Avg	Current (in)	Average (in)	% Average	Last Year (in)	Last Year % Avg
LEAVITT LAKE	SNOTEL	9617'	2.8	4.45	63%	1.3	29%	26.9	49.16	55%	38.9	79%
LEAVITT MEADOWS	SNOTEL	7198'	0.8	1.97	41%	0.6	30%	15.9	27.63	58%	21.6	78%
LOBDELL LAKE	SNOTEL	9233'	1.2	1.84	65%	1.9	103%	11.4	20.87	55%	16.6	80%
SONORA PASS	SNOTEL	8827'	1.4	2.77	51%	1.1	40%	16.9	32.27	52%	23.2	72%
VIRGINIA LAKES RIDGE	SNOTEL	9445'	1.4	1.76	80%	1.5	85%	13.1	23.84	55%	17	71%
Basin Index					59%		50%			55%		76%
# of sites					5		5			5		5
Lamoille Creek	Network	Elevation	Current (in)	Average (in)	% Average	Last Year (in)	Last Year % Avg	Current (in)	Average (in)	% Average	Last Year (in)	Last Year % Avg
LAMOILLE #3	SNOTEL	7700'	3	4.17	72%	3.4	82%	19.4	23.87	81%	17.6	74%
Basin Index					72%		82%			81%		74%
# of sites					1		1			1		1
S. Fork Humboldt	Network	Elevation	Current (in)	Average (in)	% Average	Last Year (in)	Last Year % Avg	Current (in)	Average (in)	% Average	Last Year (in)	Last Year % Avg
CORRAL CANYON	SNOTEL	8500'	3.8	4.08	93%	2.2	54%	21.9	23.02	95%	18	78%
GREEN MOUNTAIN	SNOTEL	8000'	3.7	4.04	92%	2.7	67%	23.2	24.54	95%	19.4	79%
Basin Index					92%		60%			95%		79%
# of sites					2		2			2		2
Mary's River	Network	Elevation	Current (in)	Average (in)	% Average	Last Year (in)	Last Year % Avg	Current (in)	Average (in)	% Average	Last Year (in)	Last Year % Avg
DRAW CREEK	SNOTEL	7200'	1.7	1.66	102%	0.9	54%	13.2	15.45	85%	12.4	80%
Basin Index					102%		54%			85%		80%
# of sites					1		1			1		1
Humboldt Rv. At Palisades	Network	Elevation	Current (in)	Average (in)	% Average	Last Year (in)	Last Year % Avg	Current (in)	Average (in)	% Average	Last Year (in)	Last Year % Avg
CORRAL CANYON	SNOTEL	8500'	3.8	4.08	93%	2.2	54%	21.9	23.02	95%	18	78%
DORSEY BASIN	SNOTEL	8100'	4	4.28	93%	2.7	63%	22.2	24.86	89%	20	80%
DRAW CREEK	SNOTEL	7200'	1.7	1.66	102%	0.9	54%	13.2	15.45	85%	12.4	80%
GREEN MOUNTAIN	SNOTEL	8000'	3.7	4.04	92%	2.7	67%	23.2	24.54	95%	19.4	79%
LAMOILLE #3	SNOTEL	7700'	3	4.17	72%	3.4	82%	19.4	23.87	81%	17.6	74%
Basin Index					89%		65%			89%		78%
# of sites					5		5			5		5
Little Humboldt River	Network	Elevation	Current (in)	Average (in)	% Average	Last Year (in)	Last Year % Avg	Current (in)	Average (in)	% Average	Last Year (in)	Last Year % Avg
BUCKSKIN LOWER	SNOTEL	6915'	2.6	3.04	86%	1.8	59%	16.2	18.58	87%	16.2	87%
GRANITE PEAK	SNOTEL	8543'	1.7	3.54	48%	1.7	48%	19.2	26.48	73%	20.3	77%
LAMANCE CREEK	SNOTEL	6000'	1.5	2.93	51%	0.9	31%	16.9	22.74	74%	18.3	80%
Basin Index					61%		46%			77%		81%
# of sites					3		3			3		3
Martin Creek	Network	Elevation	Current (in)	Average (in)	% Average	Last Year (in)	Last Year % Avg	Current (in)	Average (in)	% Average	Last Year (in)	Last Year % Avg
BUCKSKIN LOWER	SNOTEL	6915'	2.6	3.04	86%	1.8	59%	16.2	18.58	87%	16.2	87%
GRANITE PEAK	SNOTEL	8543'	1.7	3.54	48%	1.7	48%	19.2	26.48	73%	20.3	77%
LAMANCE CREEK	SNOTEL	6000'	1.5	2.93	51%	0.9	31%	16.9	22.74	74%	18.3	80%
Basin Index					61%		46%			77%		81%
# of sites					3		3			3		3
Reese River	Network	Elevation	Current (in)	Average (in)	% Average	Last Year (in)	Last Year % Avg	Current (in)	Average (in)	% Average	Last Year (in)	Last Year % Avg
BIG CREEK SUM	SNOTEL	8695'	2.1	3.32	63%	2.5	75%	14.2	19.07	74%	14.9	78%
LEWIS PEAK	SNOTEL	7400'	1.5	4.04	37%	1	25%	14.7	20.14	73%	14.4	71%
Basin Index					49%		48%			74%		75%
# of sites					2		2			2		2
Rock Creek	Network	Elevation	Current (in)	Average (in)	% Average	Last Year (in)	Last Year % Avg	Current (in)	Average (in)	% Average	Last Year (in)	Last Year % Avg
TOE JAM	SNOTEL	7700'	2			1		16.7			16.1	
Basin Index						0					0	
# of sites												0
Lower Humboldt River Basin	Network	Elevation	Current (in)	Average (in)	% Average	Last Year (in)	Last Year % Avg	Current (in)	Average (in)	% Average	Last Year (in)	Last Year % Avg
LAMANCE CREEK	SNOTEL	6000'	1.5	2.93	51%	0.9	31%	16.9	22.74	74%	18.3	80%

GOLCONDA	SNOTEL	6596'	1.1				1.4		17.1			14.5	
BUCKSKIN LOWER	SNOTEL	6915'	2.6	3.04	86%	1.8	59%	16.2	18.58	87%	16.2	87%	
LEWIS PEAK	SNOTEL	7400'	1.5	4.04	37%	1	25%	14.7	20.14	73%	14.4	71%	
TOE JAM	SNOTEL	7700'	2			1		16.7			16.1		
GRANITE PEAK	SNOTEL	8543'	1.7	3.54	48%	1.7	48%	19.2	26.48	73%	20.3	77%	
BIG CREEK SUM	SNOTEL	8695'	2.1	3.32	63%	2.5	75%	14.2	19.07	74%	14.9	78%	
Basin Index					56%		47%			76%		79%	
# of sites					5		5			5		5	
Franklin River	Network	Elevation	Current (in)	Average (in)	% Average	Last Year (in)	Last Year % Avg	Current (in)	Average (in)	% Average	Last Year (in)	Last Year % Avg	
POLE CANYON	SNOTEL	7700'	3.7					25.7					
Basin Index						0		0			0		0
# of sites													
Clover Valley	Network	Elevation	Current (in)	Average (in)	% Average	Last Year (in)	Last Year % Avg	Current (in)	Average (in)	% Average	Last Year (in)	Last Year % Avg	
HOLE-IN-MOUNTAIN	SNOTEL	7900'	3.3	3.6	92%	2.7	75%	27.8	26.98	103%	18	67%	
POLE CANYON	SNOTEL	7700'	3.7					25.7					
Basin Index					92%		75%			103%		67%	
# of sites					1		1			1		1	
Owyhee River nr Owyhee	Network	Elevation	Current (in)	Average (in)	% Average	Last Year (in)	Last Year % Avg	Current (in)	Average (in)	% Average	Last Year (in)	Last Year % Avg	
BIG BEND	SNOTEL	6700'	1.2	1.97	61%	1.2	61%	9.4	12.24	77%	11.2	92%	
FAWN CREEK	SNOTEL	7000'	3.3	4.44	74%	1.9	43%	20.4	26.02	78%	21.1	81%	
LAUREL DRAW	SNOTEL	6697'	2.1	3.01	70%	2.1	70%	16.9	20.68	82%	16.7	81%	
Basin Index					70%		55%			79%		83%	
# of sites					3		3			3		3	
Owyhee R. nr Gold Creek	Network	Elevation	Current (in)	Average (in)	% Average	Last Year (in)	Last Year % Avg	Current (in)	Average (in)	% Average	Last Year (in)	Last Year % Avg	
BIG BEND	SNOTEL	6700'	1.2	1.97	61%	1.2	61%	9.4	12.24	77%	11.2	92%	
Basin Index					61%		61%			77%		92%	
# of sites					1		1			1		1	
S. Fork Owyhee River	Network	Elevation	Current (in)	Average (in)	% Average	Last Year (in)	Last Year % Avg	Current (in)	Average (in)	% Average	Last Year (in)	Last Year % Avg	
JACK CREEK UPPER	SNOTEL	7250'	2.7	3.24	83%	1.9	59%	18.8	22.26	84%	18.5	83%	
Basin Index					83%		59%			84%		83%	
# of sites					1		1			1		1	
Salmon Falls Creek	Network	Elevation	Current (in)	Average (in)	% Average	Last Year (in)	Last Year % Avg	Current (in)	Average (in)	% Average	Last Year (in)	Last Year % Avg	
BEAR CREEK	SNOTEL	8040'	3.1	4.38	71%	4.2	96%	20	26.21	76%	25.9	99%	
BOSTETTER R.S.	SNOTEL	7500'	3	2.68	112%	4.1	153%	20.5	19.17	107%	20.5	107%	
MAGIC MOUNTAIN	SNOTEL	6880'	3.7	3.69	100%	4.2	114%	24	25.3	95%	23.9	94%	
POLE CREEK R.S.	SNOTEL	8330'	1.6	2.38	67%	2.5	105%	10.4	14.09	74%	12.3	87%	
WILSON CREEK	SNOTEL	7120'	2.6	4.1	63%	2.4	59%	17.9	20.46	87%	19.4	95%	
Basin Index					81%		101%			88%		97%	
# of sites					5		5			5		5	
Kingston Creek	Network	Elevation	Current (in)	Average (in)	% Average	Last Year (in)	Last Year % Avg	Current (in)	Average (in)	% Average	Last Year (in)	Last Year % Avg	
BIG CREEK SUM	SNOTEL	8695'	2.1	3.32	63%	2.5	75%	14.2	19.07	74%	14.9	78%	
Basin Index					63%		75%			74%		78%	
# of sites					1		1			1		1	
Step toe Valley	Network	Elevation	Current (in)	Average (in)	% Average	Last Year (in)	Last Year % Avg	Current (in)	Average (in)	% Average	Last Year (in)	Last Year % Avg	
BERRY CREEK	SNOTEL	9100'	2.5	3.4	74%	4	118%	15.4	18.83	82%	15.2	81%	
BIRD CREEK	SNOTEL	7500'	1.6			0.7		8.4			7.3		
WARD MOUNTAIN	SNOTEL	9200'	1.6	2.49	64%	1	40%	10.8	16.62	65%	10.2	61%	
Basin Index					70%		85%			74%		72%	
# of sites					2		2			2		2	
Spring Mountains	Network	Elevation	Current (in)	Average (in)	% Average	Last Year (in)	Last Year % Avg	Current (in)	Average (in)	% Average	Last Year (in)	Last Year % Avg	
BRISTLECONE TRAIL	SNOTEL	8979'	0.5			0.8		6.8			8.4		
LEE CANYON	SNOTEL	8626'	1			0.6		9.4			8.1		
RAINBOW CANYON	SNOTEL	7920'	0.7			0.5		9.6			9.2		
Basin Index						0		0			0		0
# of sites													
Quinn River	Network	Elevation	Current (in)	Average (in)	% Average	Last Year (in)	Last Year % Avg	Current (in)	Average (in)	% Average	Last Year (in)	Last Year % Avg	
DISASTER PEAK	SNOTEL	6500'	2.3	1.85	124%	0.8	43%	11.9	17.39	68%	11.6	67%	
Basin Index					124%		43%			68%		67%	
# of sites					1		1			1		1	

McDermitt Creek	Network	Elevation	Current (in)	Average (in)	% Average	Last Year (in)	Last Year % Avg	Current (in)	Average (in)	% Average	Last Year (in)	Last Year % Avg
DISASTER PEAK	SNOTEL	6500'	2.3	1.85	124%	0.8	43%	11.9	17.39	68%	11.6	67%
Basin Index			124%			43%			68%			67%
# of sites			1			1			1			1
N Great Basin	Network	Elevation	Current (in)	Average (in)	% Average	Last Year (in)	Last Year % Avg	Current (in)	Average (in)	% Average	Last Year (in)	Last Year % Avg
BALD MTN AM	SNOTEL	6720'										
DISASTER PEAK	SNOTEL	6500'	2.3	1.85	124%	0.8	43%	11.9	17.39	68%	11.6	67%
SHELDON	SCAN	5860'	0.6	0.94	64%	0.5	53%	3	6.49	46%	5.8	89%
Basin Index			104%			47%			62%			73%
# of sites			2			2			2			2

Current (KAF)	Last Year (KAF)	Average (KAF)	Capacity (KAF)	Current % Capacity	Last Year % Capacity	Average % Capacity	Current % Average	Last Year % Average
------------------	--------------------	------------------	-------------------	-----------------------	-------------------------	-----------------------	----------------------	------------------------

[illegible][illegible][illegible][illegible]

Issued by

Jason Weller
Chief
Natural Resources Conservation Service
U.S. Department of Agriculture

Released by

Bruce Petersen
State Conservationist
Natural Resources Conservation Service
Reno, Nevada

Prepared by

Beau Uriona, Hydrologist

YOU MAY OBTAIN THIS PRODUCT AS WELL AS CURRENT
SNOW, PRECIPITATION, TEMPERATURE AND SOIL MOISTURE,
RESERVOIR, SURFACE WATER SUPPLY INDEX, AND OTHER
DATA BY VISITING OUR WEB SITE @:

<http://www.nrcs.usda.gov/wps/portal/nrcs/main/nv/snow/>



Snow Survey, NRCS, USDA
245 North Jimmy Doolittle Road
Salt Lake City, UT 84116
(801) 524-5213 x116



Nevada Water Supply Outlook Report

Natural Resources Conservation Service
Reno, NV

