

**BLM-001**







Township N<sup>o</sup> 20 North Range N<sup>o</sup> 54 East, M<sup>d</sup> Diablo Meridian Nevada. FOURTH STANDARD PARALLEL NORTH

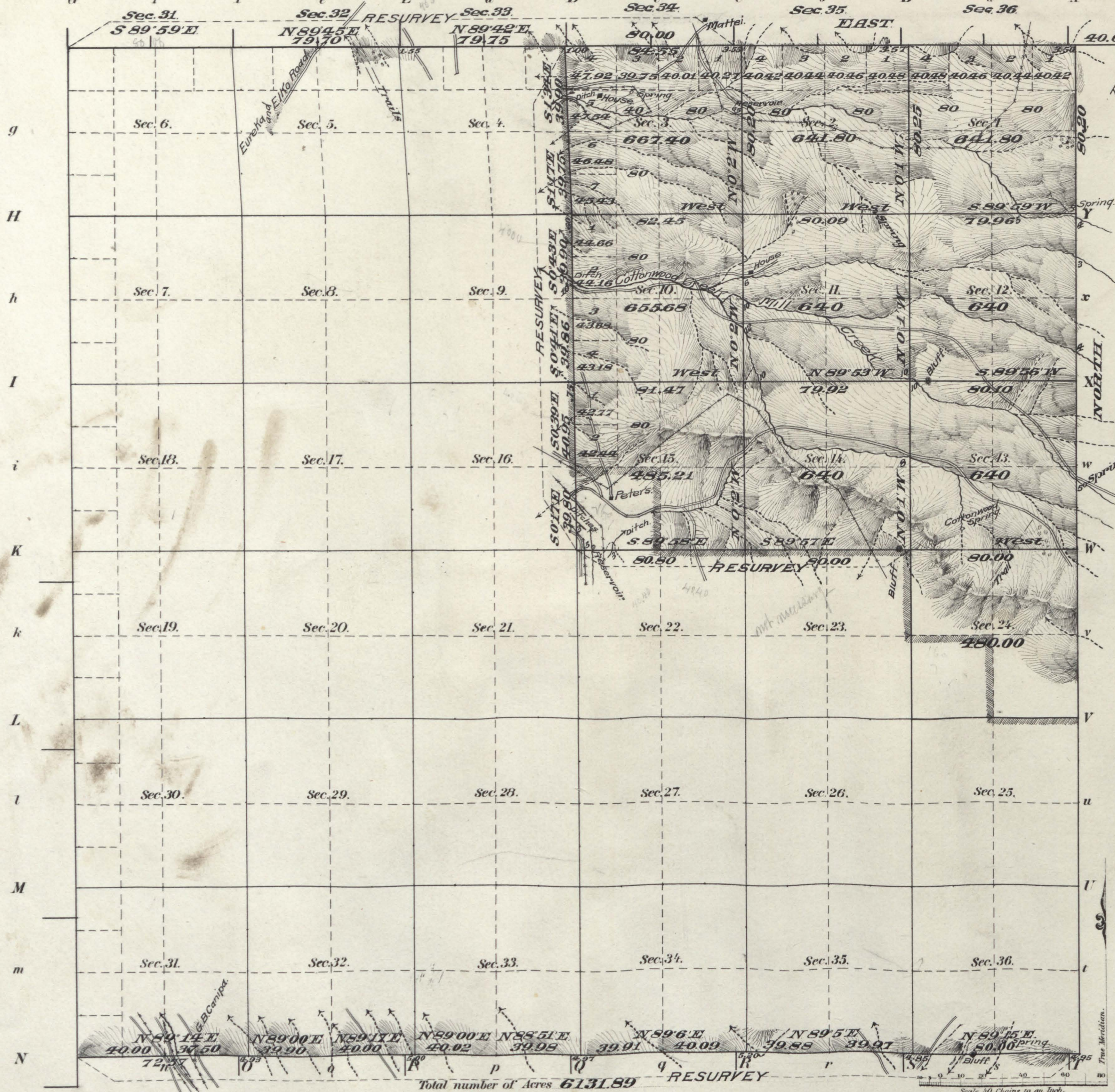


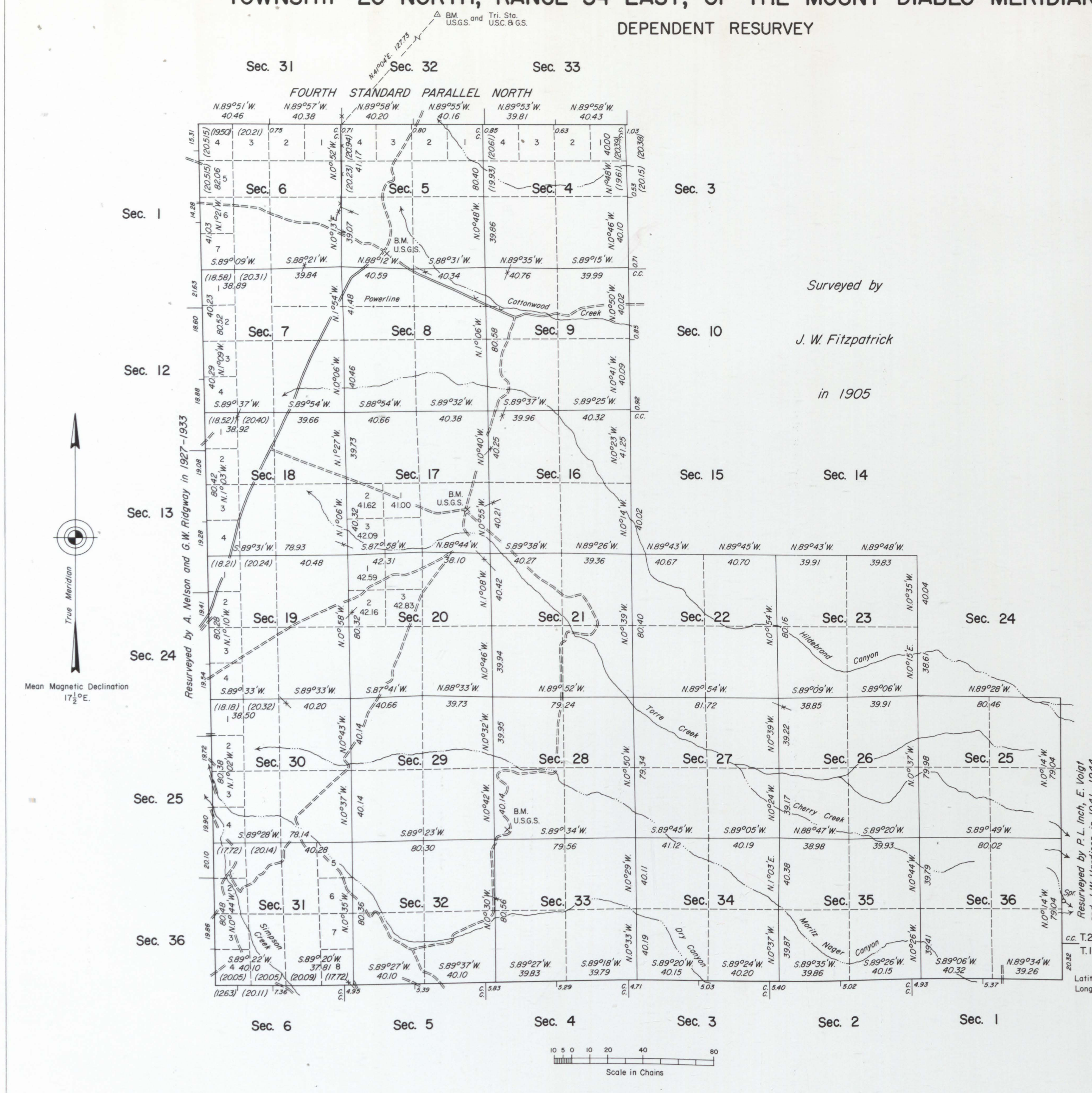
Table with columns: Posts, Courses, CH<sup>2</sup> LK<sup>2</sup>, Posts, Courses, CH<sup>2</sup> LK<sup>2</sup>, Posts, Courses, CH<sup>2</sup> LK<sup>2</sup>. Includes latitude/longitude data: Latitude 39° 31' 35" N, Longitude 116° 2' 21" W, Mean mag. decl. 17° 15' E.

Table with columns: Surveys Designated, By Whom Surveyed, No. Date of Contract, Amount of Surveys M. Ch. LK., When Surveyed. Includes entries for Township lines, Resurvey, and Connections.

The above Map of Township N<sup>o</sup> 20 North of Range N<sup>o</sup> 54 East, M<sup>d</sup> Diablo Meridian Nevada is strictly conformable to the field notes of the survey thereof on file in this office which have been examined and approved. Surveyor General's Office, Reno Nevada November 20, 1906. Matthew J. Hill, Sur. Gen.

# TOWNSHIP 20 NORTH, RANGE 54 EAST, OF THE MOUNT DIABLO MERIDIAN, NEVADA

## DEPENDENT RESURVEY



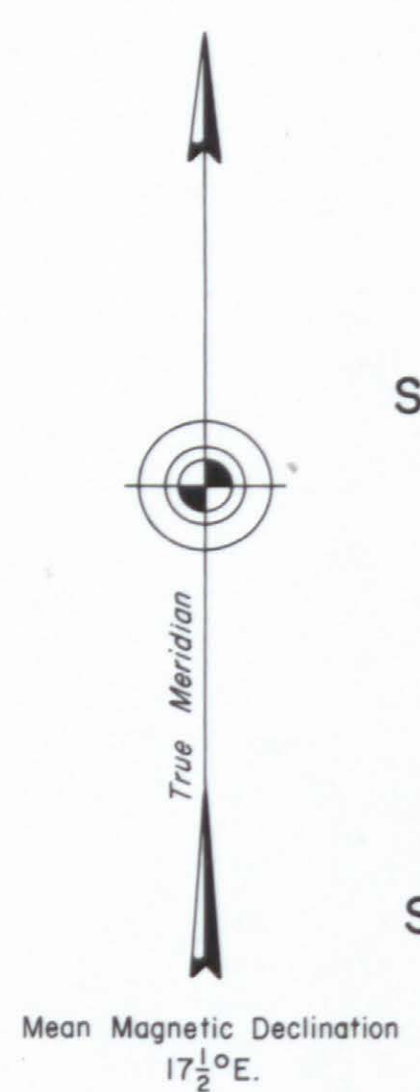
History of the earlier surveys is contained in the field notes.

This plat represents a dependent resurvey of the Fourth Standard Parallel North, through a portion of R. 54 E., and the south boundary and a portion of the subdivisional lines of T. 20 N., R. 54 E., designed to restore the corners in their true original locations according to the best available evidence.

Lettings and areas, except as shown hereon, are as shown on the plat approved March 3, 1894.

Survey executed by Neil R. Forsyth and Ronald E. Williams, Cadastral Surveyors, beginning June 4, 1981, and completed July 29, 1981, pursuant to Special Instructions dated April 29, 1981, for Group No. 594, Nevada.

Surveyed by  
*J. W. Fitzpatrick*  
in 1905



UNITED STATES DEPARTMENT OF THE INTERIOR  
BUREAU OF LAND MANAGEMENT

Reno, Nevada August 25, 1983

This plat is strictly conformable to the approved field notes, and the survey having been correctly executed in accordance with the requirements of law and the regulations of this Bureau, is hereby accepted.

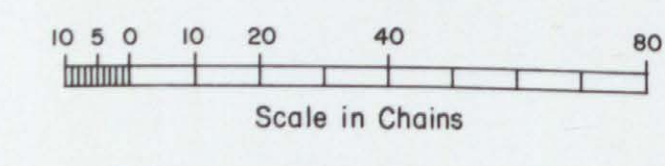
For the Director

*Lael E. Bland*

Acting Deputy State Director, Operations

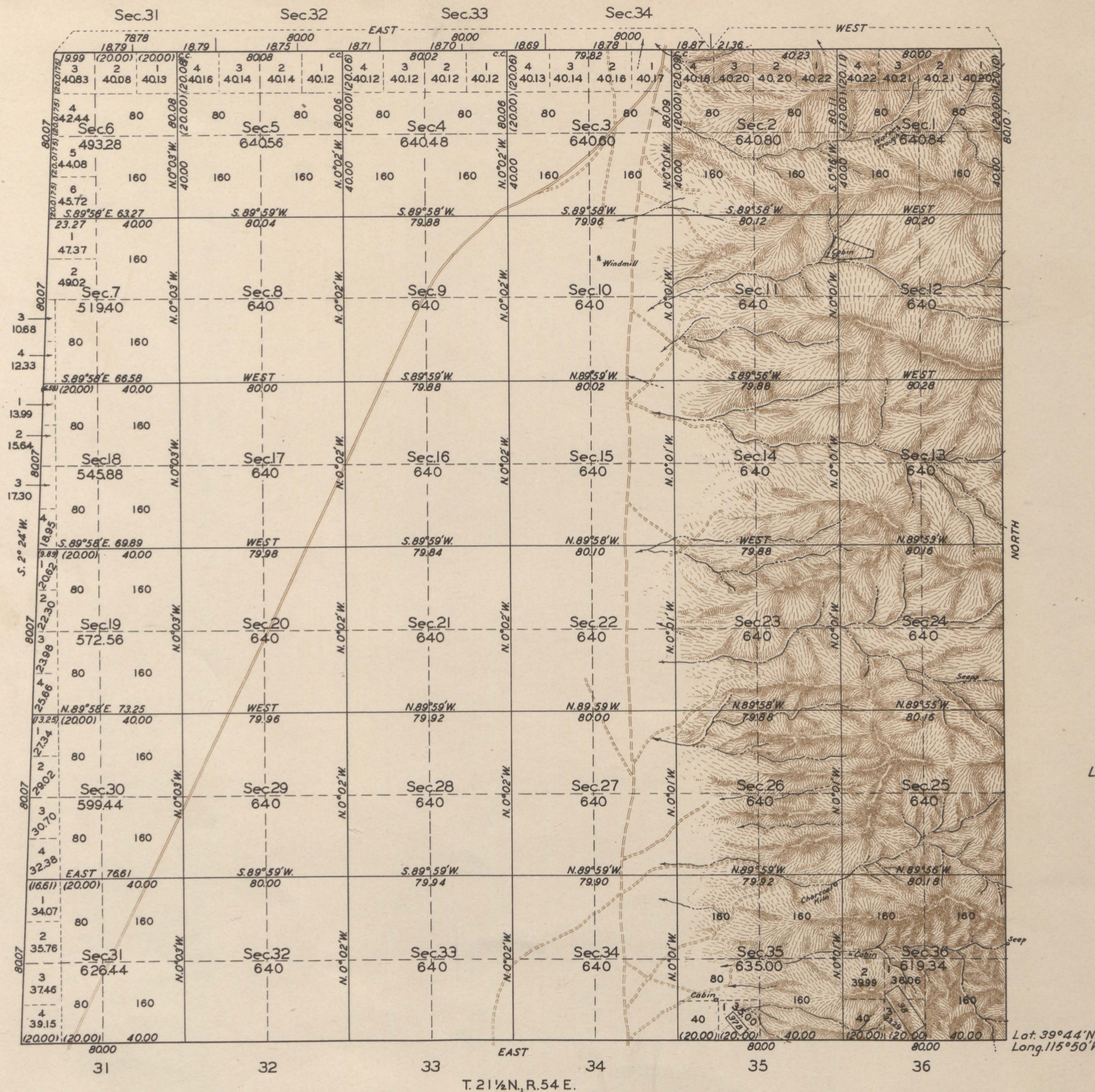
Resurveyed by P. L. Inch, E. Voigt and J. W. Hardison in 1941-1944

cc. T.20N. R.55E.  
T.19N.  
Latitude 39°32'57.8"N.  
Longitude 115°49'52.0"W.





TOWNSHIP N° 22 NORTH, RANGE N° 54 EAST, OF THE MOUNT DIABLO MERIDIAN, NEVADA.



Scale: 40 Chains to an Inch

Mining Claims 25.66 Acres  
Public Land 22,534.62 "  
Total Area 22,560.28 Acres.

LINES DESIGNATED	BY WHOM SURVEYED	GROUP N°	DATED	MILEAGE MLS.	CHS.	WHEN SURVEYED	
						BEGUN	COMPLETED
Exterior	C.S. Swanholm	174	May 20, 1936	23	60.89	June 16, 1936	Oct. 7, 1937
Subdivisional	R.C. Yundt	"	Sept. 1, 1937	59	30.08		

Office of Supervisor of Surveys  
Denver Colorado, Jan. 19, 1939.  
The above plat of Township No. 22 North, Range No. 54 East of the Mount Diablo Meridian, Nevada is strictly conformable to the field notes of the survey thereof which have been examined and approved.

*Charles A. Johnson*  
Supervisor of Surveys.

UNITED STATES  
DEPARTMENT OF THE INTERIOR  
GENERAL LAND OFFICE  
Washington, D.C., April 13, 1939.  
The survey represented by this plat having been correctly executed in accordance with the requirements of law and the regulations of this office is hereby accepted.

*Antoinette Frank*  
Assistant Commissioner.

1462595  
**DUPLICATE PLAT**  
The following annotations are not a part of this plat  
Received with letter dated  
*Jan. 19, 1939*  
From *Supervisor*  
*J. Swanholm*  
Posted in Div. "O" 1226/4, 1939  
Vol. 64, page 133  
Plat filed in local land office  
*January 6, 1941*  
Miscellaneous 1462595-  
1857415

LIST OF MINING CLAIMS  
Survey No. 37 B. Champion Lode.  
" " 38, Curtis & Keller Lode.

Lot 39° 44' N.  
Long. 115° 50' W.

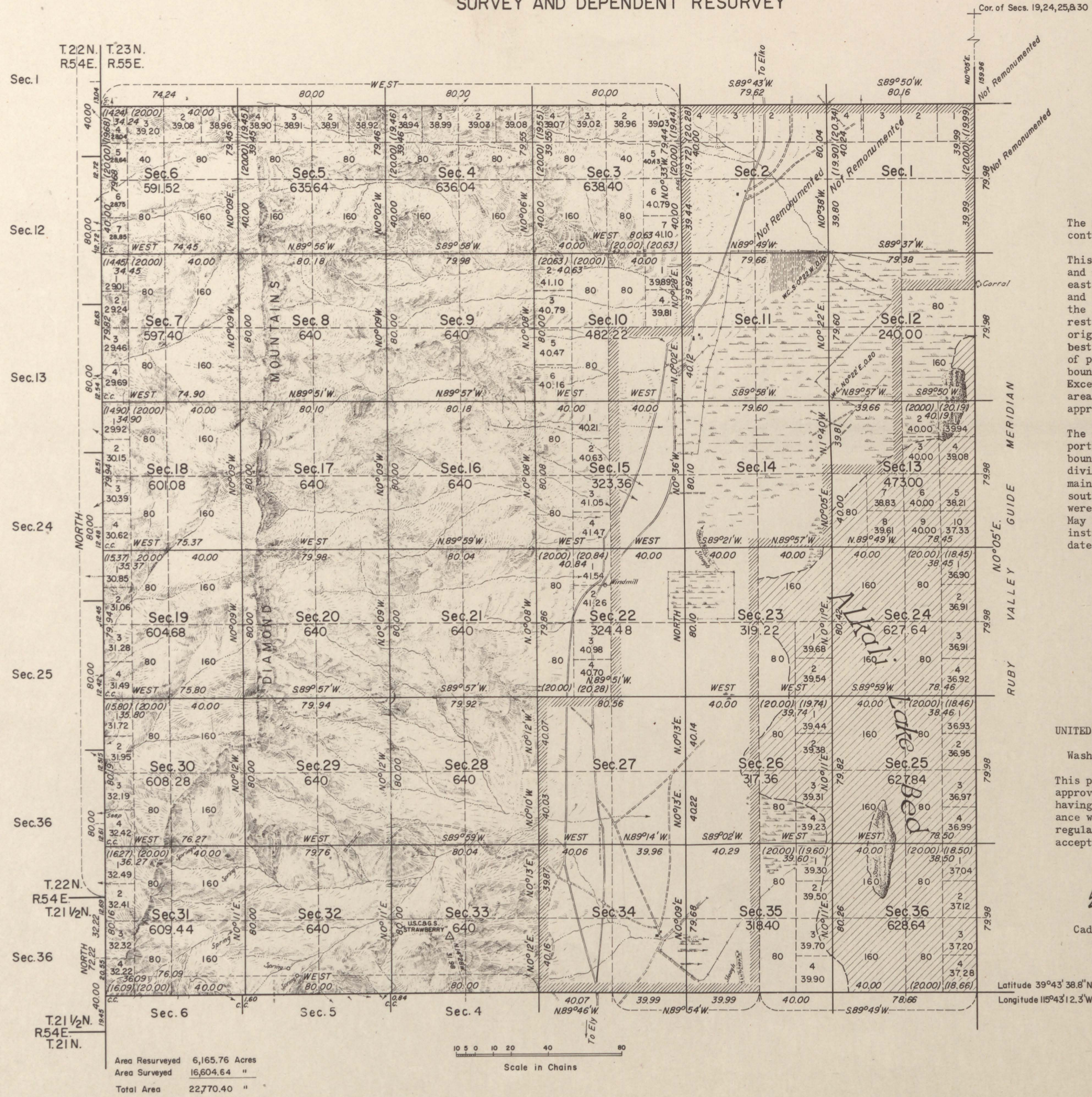
*we*





# TOWNSHIP 22 NORTH, RANGE 55 EAST, OF THE MOUNT DIABLO MERIDIAN, NEVADA.

SURVEY AND DEPENDENT RESURVEY



The history of earlier surveys is contained in the field notes.

This plat represents a retracement and reestablishment of the original east boundary, portions of the north and south boundaries and portions of the subdivisional lines designed to restore all corners in their true original locations according to the best available evidence, and a survey of portions of the north and south boundaries and subdivisional lines. Except as shown hereon, lottings and areas are as shown upon the plat approved December 30, 1871.

The resurvey of the east boundary, portions of the north and south boundaries and portions of the subdivision, and the survey of the remaining portions of the north and south boundaries and subdivision were executed by Philip L. Inch, May 7 to July 23, 1941, under special instructions for Group 281, Nevada, dated January 18, 1941.

UNITED STATES DEPARTMENT OF THE INTERIOR  
BUREAU OF LAND MANAGEMENT  
Washington, D. C. March 15, 1957

This plat is strictly conformable to the approved field notes, and the survey, having been correctly executed in accordance with the requirements of law and the regulations of this Bureau, is hereby accepted.

For the Director  
*Carl G. Harrington*  
Cadastral Engineering Staff Officer

Latitude 39°43' 38.8" N.  
Longitude 115°43' 12.3" W.

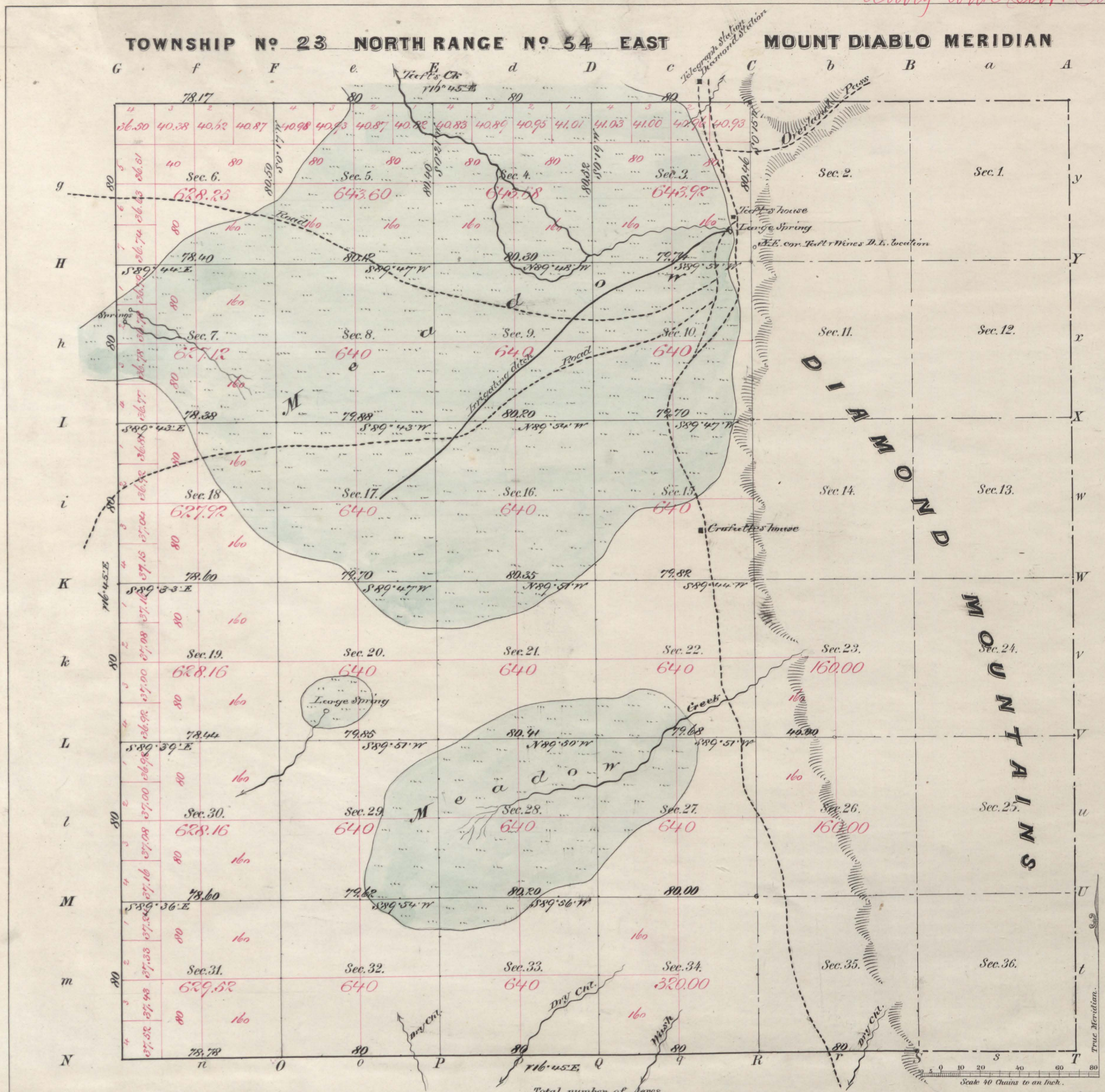
Area Resurveyed	6,165.76 Acres
Area Surveyed	16,604.64 "
Total Area	22,770.40 "

Scale in Chains  
0 10 20 40 80

M.S. 1-3-3  
1-1-1

Received with Sur. Sub's Letter of Oct 22, 1879

Report 34168



Meanders of								
Posts	Courses	Ch <sup>2</sup> Lk <sup>2</sup>	Posts	Courses	Ch <sup>2</sup> Lk <sup>2</sup>	Posts	Courses	Ch <sup>2</sup> Lk <sup>2</sup>
Aggregate Area of Public Land Surveyed								
Estimated - Mountains Unsurveyed								
Aggregate								
							13,300.33 Ac.	
							7,687.36 "	
							5,612.97 "	
Commenced August 22 <sup>nd</sup> 1879								
Completed " 27 <sup>th</sup> "								
Plat filed in local office at Covelo Nev.								
Dec. 12, 1879. See letter C. 68695.								
Noted in tract book Dec. 21 <sup>st</sup> 1880.								
R.B.B.								
Subdivision line not otherwise noted run Var. 16° 45' E								

Survey Designated	By Whom Surveyed	Date of Contract	Amount of Survey	When Surveyed
Township Lines	Bridge & Galin	July 3 <sup>rd</sup> 1879	3 1/2 Ch <sup>2</sup> Lk <sup>2</sup> 125	1879
Subdivisions.			43 - 33 - 87	August "

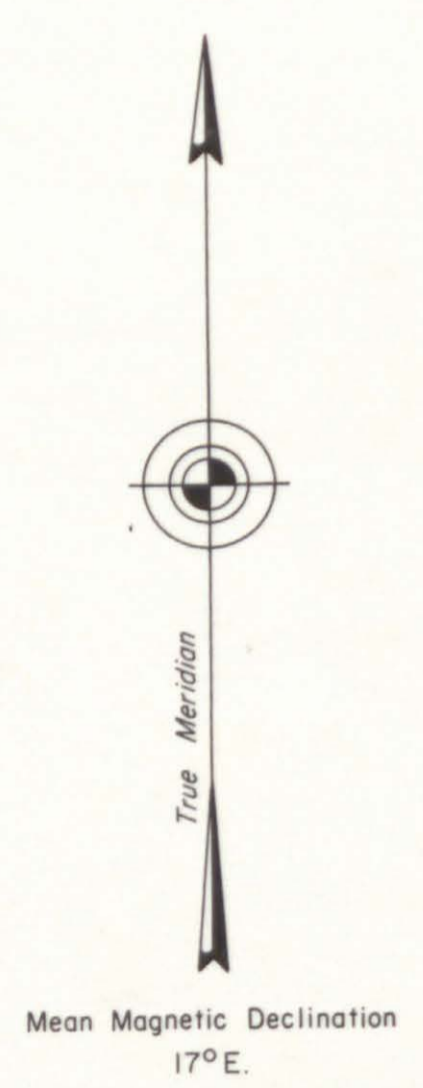
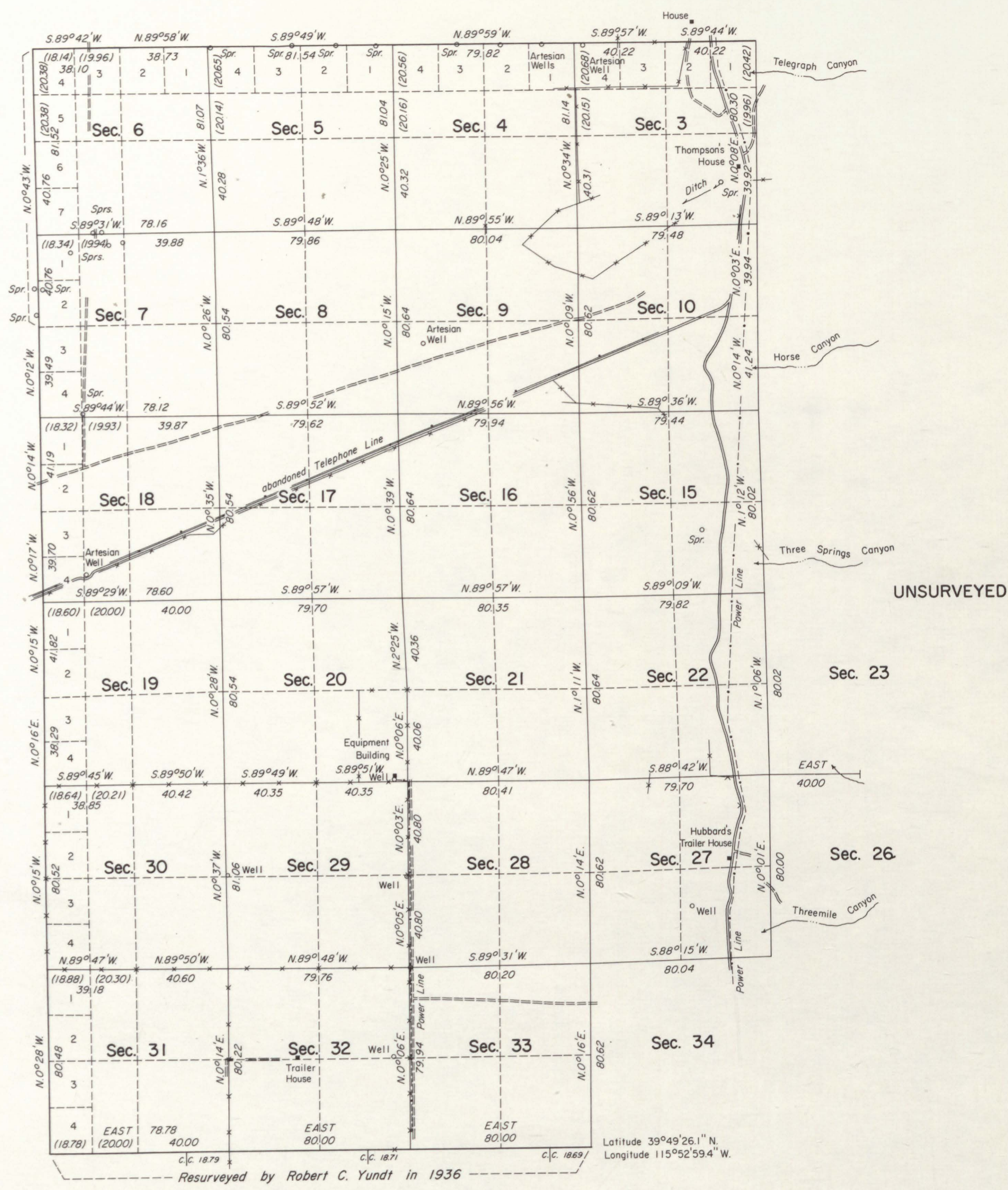
The above Map of Township No. 23 North of Range No. 54 East Mount Diablo Meridian is strictly conformable to the field notes of the survey thereof on file in this Office, which have been examined and approved.

Surveyor General's Office,  
Virginia City, Nev.  
October 22<sup>nd</sup> 1879

D. A. Parry  
Sur. Gen. Nev.

# TOWNSHIP 23 NORTH, RANGE 54 EAST, OF THE MOUNT DIABLO MERIDIAN, NEVADA

## DEPENDENT RESURVEY



A history of surveys is contained in the field notes.

This plat represents a dependent resurvey of the west boundary, a portion of the north boundary and a portion of the subdivisional lines of T. 23 N., R. 54 E., designed to restore the corners in their true original locations according to the best available evidence.

Lottings and areas are as shown on the plat approved October 22, 1879.

Survey executed by James R. Munson, Cadastral Surveyor, September 28 to November 20, 1973, under Special Instructions dated September 12, 1973 for Group No. 504, Nevada.

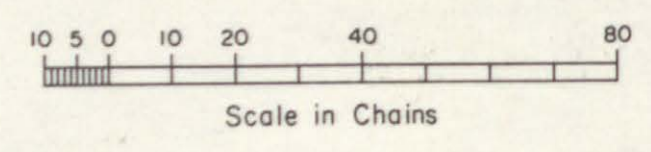
UNITED STATES DEPARTMENT OF THE INTERIOR  
BUREAU OF LAND MANAGEMENT  
Washington, D.C. December 10, 1975

This plat is strictly conformable to the approved field notes, and the survey, having been correctly executed in accordance with the requirements of law and the regulations of this Bureau, is hereby accepted.

For the Director

*Bernard W. Ferguson*  
Chief, Division of Cadastral Survey

Sec. 6      Sec. 5      Sec. 4      Sec. 3

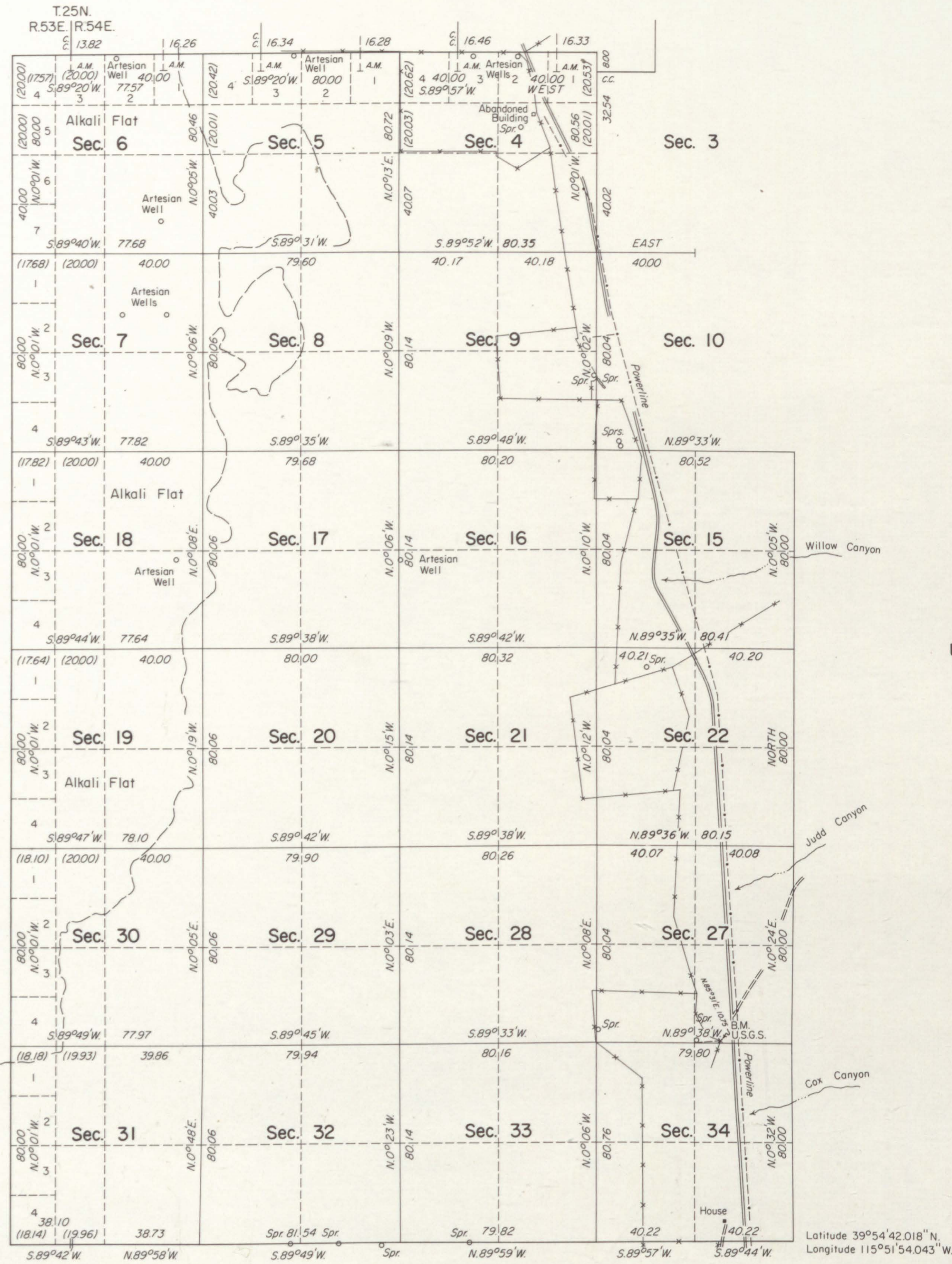




# TOWNSHIP 24 NORTH, RANGE 54 EAST, OF THE MOUNT DIABLO MERIDIAN, NEVADA

## DEPENDENT RESURVEY

Sec. 31      Sec. 32      Sec. 33



A history of surveys is contained in the field notes.

A dependent resurvey of a portion of the south boundary was executed under T. 23 N., R. 54 E., of this Group.

This plat represents a dependent resurvey of the west boundary, a portion of the north boundary, and a portion of the subdivisional lines of T. 24 N., R. 54 E., designed to restore the corners in their true original locations according to the best available evidence.

Lottings and areas are as shown on the plat approved November 4, 1879.

Survey executed by James R. Munson and Duane R. Garoutte, Cadastral Surveyors, September 21, 1973 to November 12, 1974, under Special Instructions dated September 12, 1973, and Supplemental Special Instructions dated September 9, 1974 for Group No. 504, Nevada.

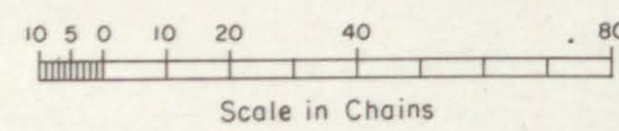
UNSURVEYED

UNITED STATES DEPARTMENT OF THE INTERIOR  
BUREAU OF LAND MANAGEMENT  
Washington, D.C.      December 10, 1975

This plat is strictly conformable to the approved field notes, and the survey, having been correctly executed in accordance with the requirements of law and the regulations of this Bureau, is hereby accepted.

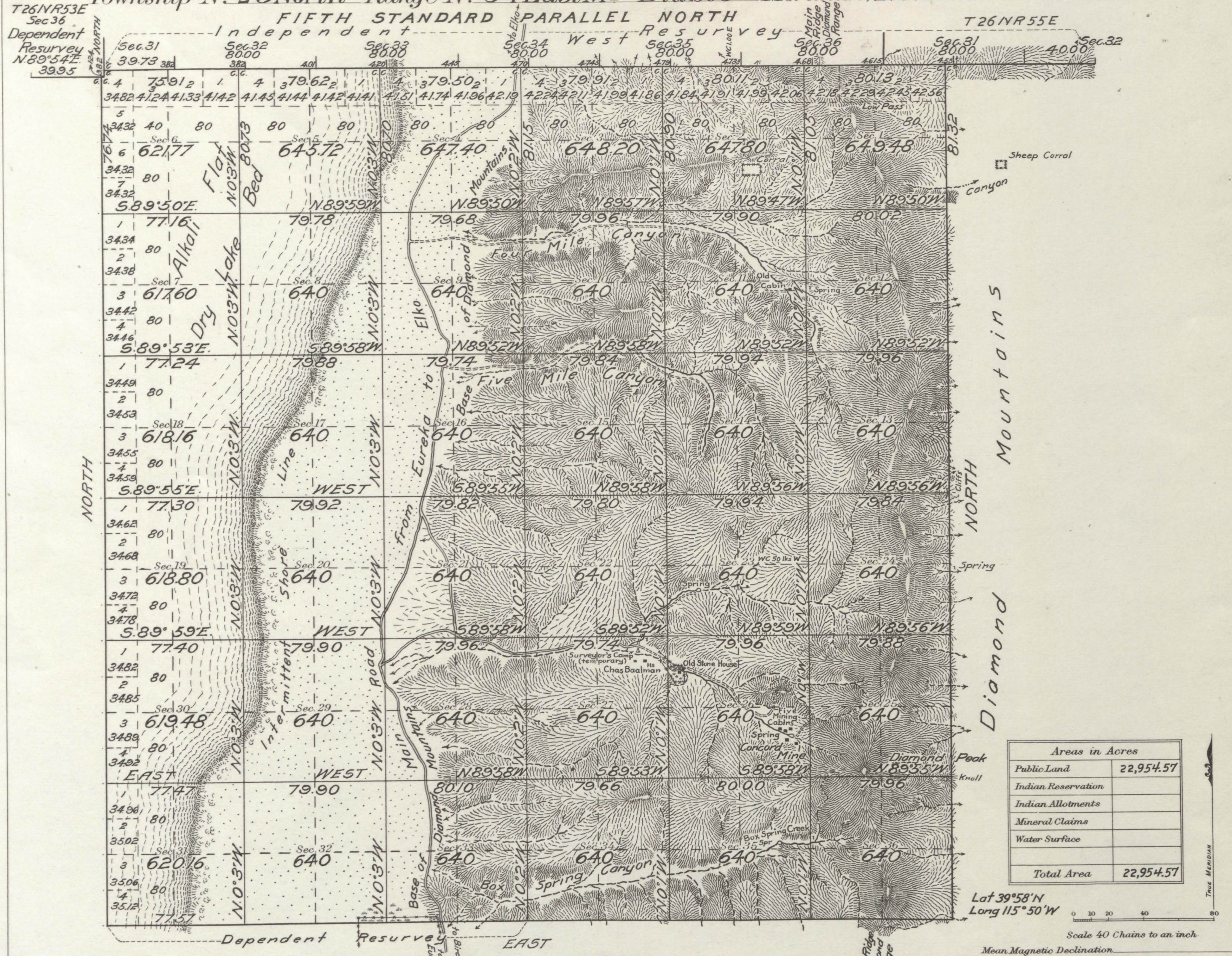
For the Director

*Bernard W. Halpern*  
Chief, Division of Cadastral Survey



DUPLICATE  
Accepted November 1, 1923

Township No 25 North Range No 54 East Mt Diablo Meridian, Nevada.



**DUPLICATE PLAT**  
The following annotations are not a part of this Plat

Received with Surveyor General's letter of **June 14, 1923**  
Posted in Div. 70 Feb. 23, 1924  
Vol. 64, p. 169  
Township Plat filed with R. and R.

Miscellaneous

Surveys Designated	By Whom Surveyed	Group		Amount of Surveys		When Surveyed	
		No.	Date	Mls.	chs.	Began	Completed
5th Std Par'N Dep'ties	Chas F Moore	94	June 9, 1921	0	39 95		Nov 23, 1921
5th " " " Indep'ties	US Transitman	6		6	79 73	Nov 23, 1921	Dec 14, 1921
South Bay Dep Resurv		2		2	77 57	Nov 10, 1921	Dec 15, 1921
" " Survey		3		0	0	Nov 15, 1921	Nov 16, 1921
East " "		6		1	32	Nov 19, 1921	Nov 23, 1921
West " "		6		0	56		Nov 17, 1921
Subdivisions "		59		68	18	Nov 26, 1921	Dec 10, 1921

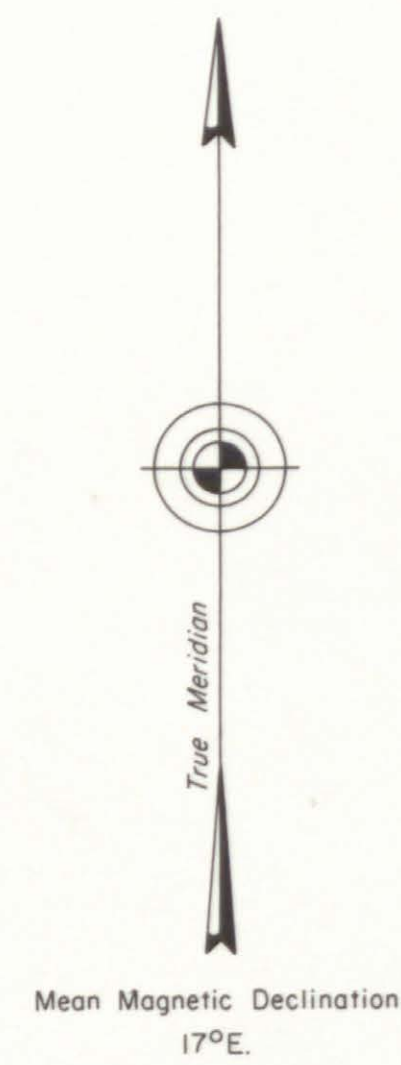
The above map of Township No. 25 North, Range No. 54 East, of the Mount Diablo Base & Meridian, Nevada, is strictly conformable to the field notes of the survey thereof on file in this office, which have been examined and approved.

U. S. Surveyor General's Office.  
Reno, Nevada, June 14, 1923

*J. E. Holden*  
Surveyor General.

FWF  
AR5

TOWNSHIP 25 NORTH, RANGE 54 EAST, OF THE MOUNT DIABLO MERIDIAN, NEVADA  
DEPENDENT RESURVEY



Surveyed by C. F. Moore in 1921

A history of surveys is contained in the field notes.

A dependent resurvey of a portion of the north boundary of T. 24 N., R. 54 E., was executed under T. 24 N., R. 54 E., of this Group.

This plat represents a dependent resurvey of a portion of the south boundary, a portion of the West boundary and a portion of the subdivisional lines of T. 25 N., R. 54 E., designed to restore the corners in their true original locations according to the best available evidence.

Lottings and areas, except as shown hereon, are as shown on the plat approved June 14, 1923, and accepted November 1, 1923.

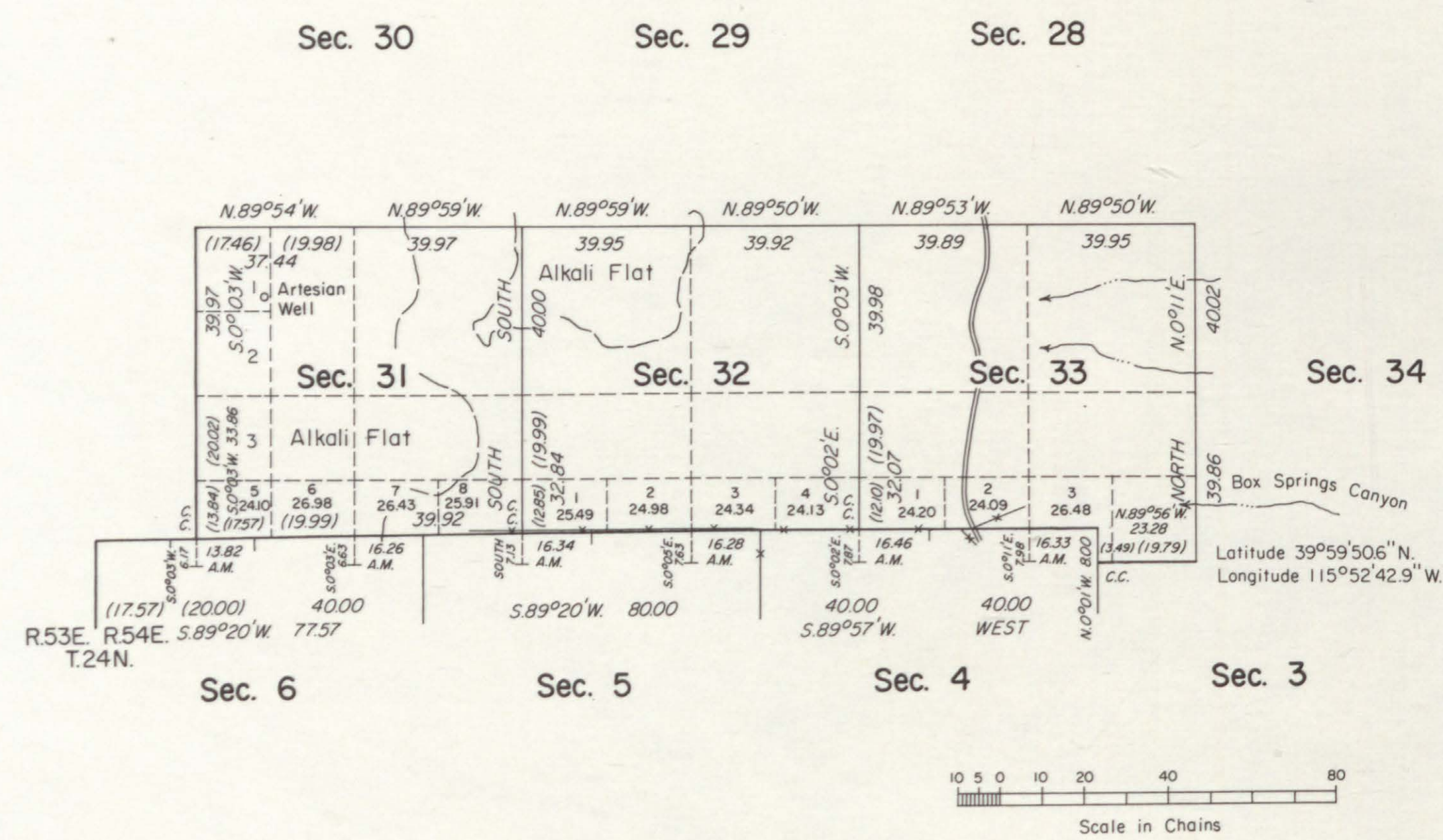
Survey executed by Duane R. Garoutte, Cadastral Surveyor, October 15 to November 12, 1974, under Supplemental Special Instructions dated September 9, 1974, for Group No. 504, Nevada.

UNITED STATES DEPARTMENT OF THE INTERIOR  
BUREAU OF LAND MANAGEMENT  
Washington, D.C. December 10, 1975

This plat is strictly conformable to the approved field notes, and the survey, having been correctly executed in accordance with the requirements of law and the regulations of this Bureau, is hereby accepted.

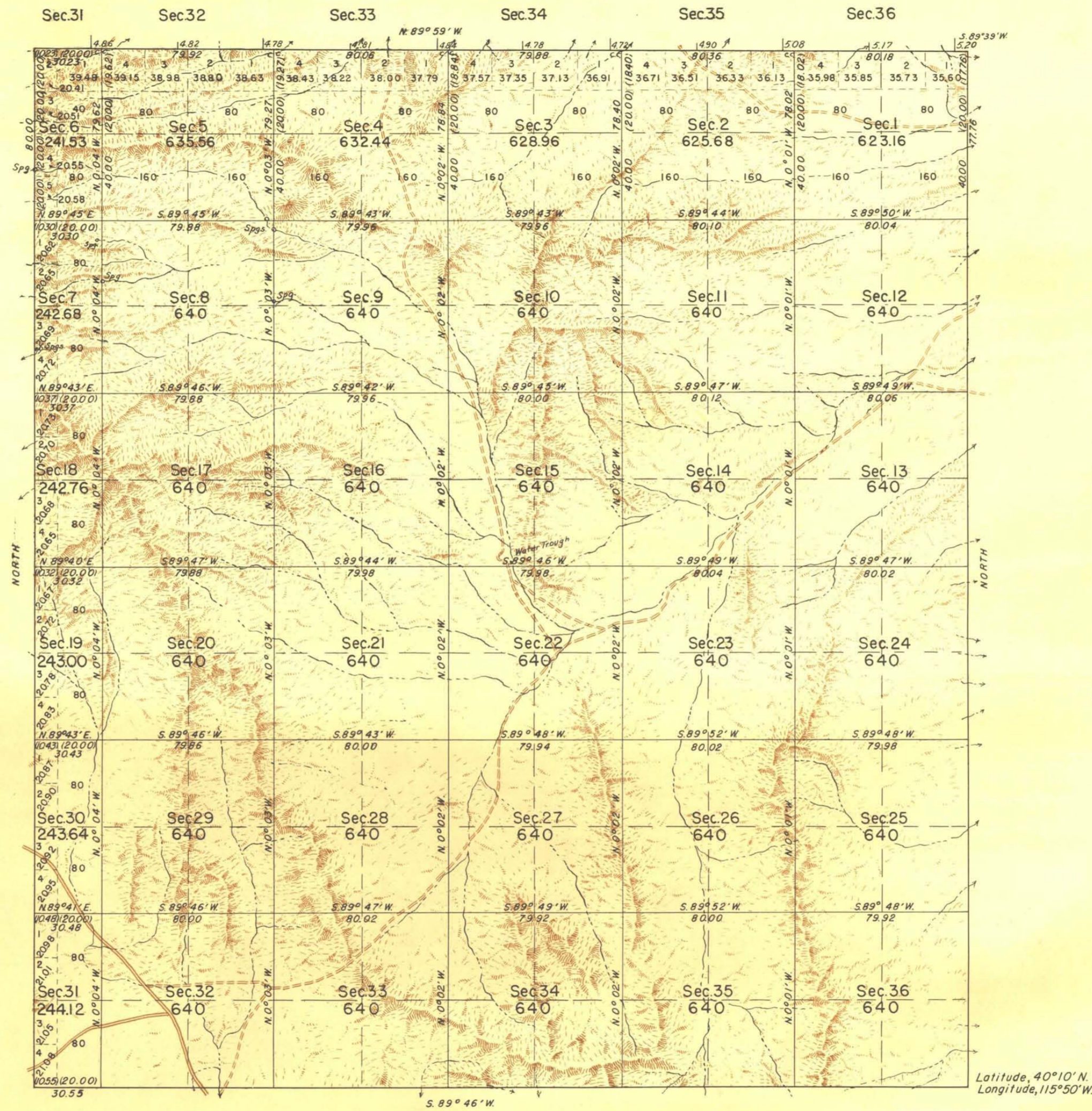
For the Director

*Bernard W. Adams*  
Chief, Division of Cadastral Survey





TOWNSHIP N° 27 NORTH, RANGE N° 54 EAST, OF THE MOUNT DIABLO MERIDIAN, NEVADA.



Scale: 40 Chains to an Inch

Mean Magnetic Declination, 19° 00' E, Area Surveyed 20,603.53 Acres

LINES DESIGNATED	BY WHOM SURVEYED	GROUP WHEN SURVEYED		
		N°	DATE	BEGUN COMPLETED
Exterior, N. Bdy.	G. W. Ridgway	111		1926
" W. Bdy.	Swanholm & Ridgway	111		1924 1926
" E. Bdy.	Vaigt & Inch	195		1936 1939
" S. Bdy.	"	"		1939
Subdivisional	Phillip L. Inch	"	May 7 1936	June 30, 1939 July 25, 1939
Miscellaneous	"	"	" " "	" " "

UNITED STATES DEPARTMENT OF THE INTERIOR  
GENERAL LAND OFFICE

DENVER, COLORADO, JANUARY 29, 1945.  
THIS PLAT OF TOWNSHIP NO. 27 NORTH, RANGE NO. 54 EAST, OF THE MOUNT DIABLO MERIDIAN, NEVADA, IS STRICTLY CONFORMABLE TO THE FIELD NOTES OF THE SURVEY THEREOF WHICH HAVE BEEN EXAMINED AND APPROVED.

WASHINGTON, D. C., SEPTEMBER 6, 1945.  
THE SURVEY REPRESENTED BY THIS PLAT HAVING BEEN CORRECTLY EXECUTED IN ACCORDANCE WITH THE REQUIREMENTS OF LAW AND THE REGULATIONS OF THIS OFFICE, IS HEREBY ACCEPTED.

*[Signature]*  
SUPERVISOR OF SURVEYS.

*[Signature]*  
ASSISTANT COMMISSIONER.