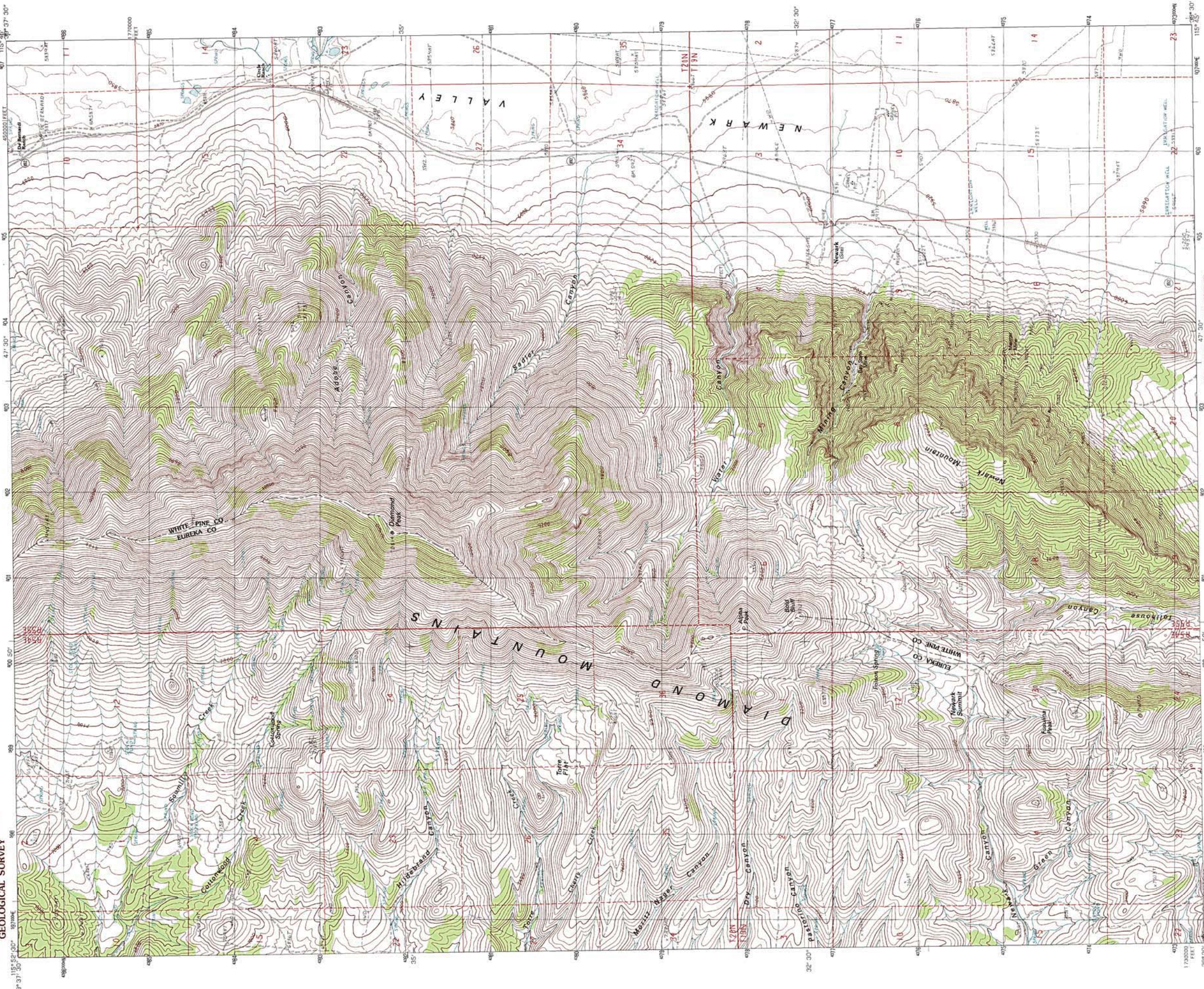


UNITED STATES
DEPARTMENT OF THE INTERIOR
GEOLOGICAL SURVEY

DIAMOND PEAK QUADRANGLE
NEVADA
7.5 MINUTE SERIES (TOPOGRAPHIC)



PROVISIONAL MAP
Produced from original manuscript drawings. Information shown as of date of field check.

ROAD LEGEND
Improved Road
Unimproved Road
Trail
Interstate Route
U. S. Route
State Route

QUADRANGLE LOCATION

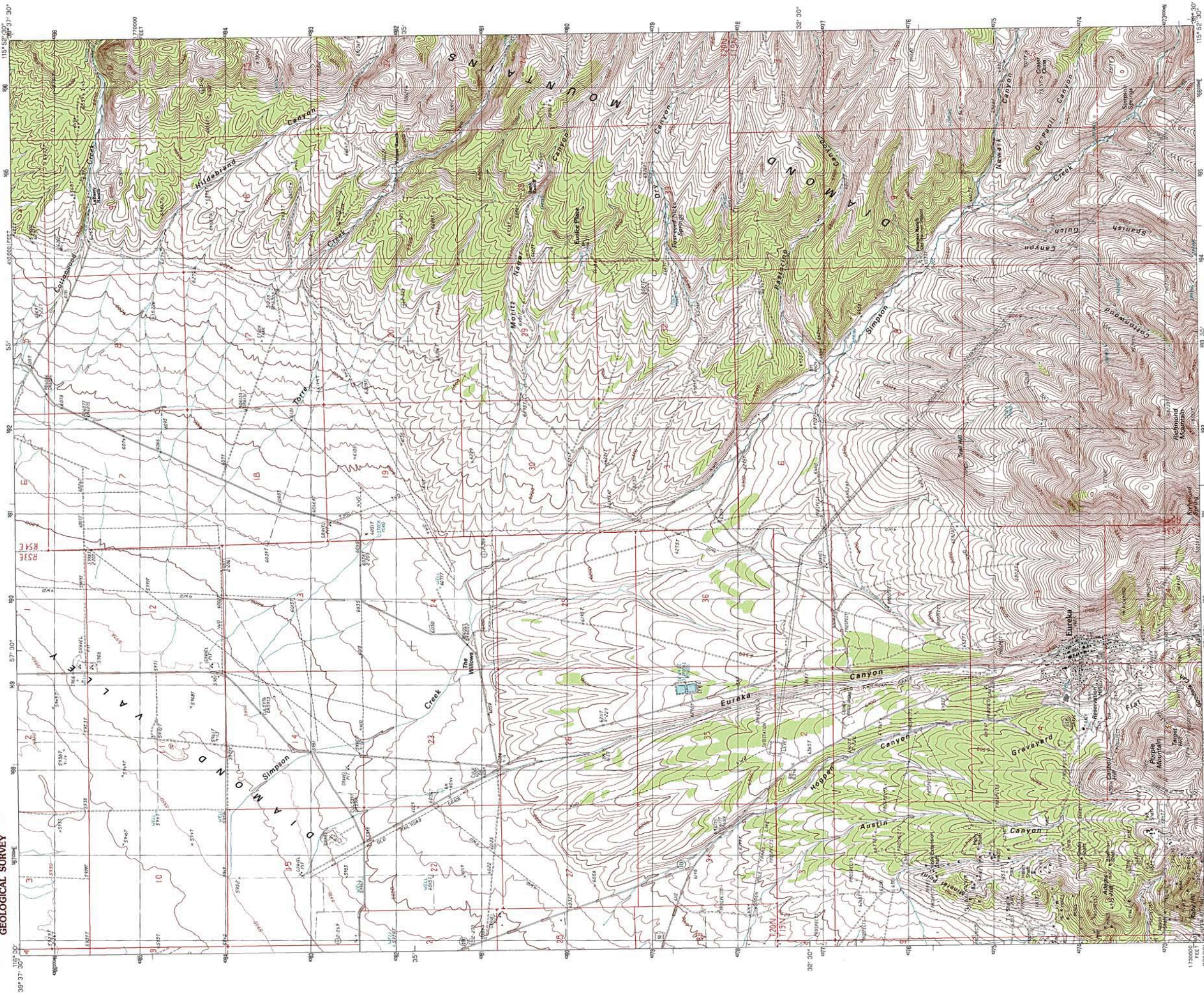
1	2	3
4	5	6
7	8	9

ADJOINING 7.5 QUADRANGLE NAMES

SCALE 1:24,000
SCALE INTERVAL 40 FEET
SUPPLEMENTARY CONTOUR INTERVAL 10 FEET
To convert meters to feet multiply by 3.2808
To convert feet to meters multiply by .3048

PRODUCED BY THE UNITED STATES GEOLOGICAL SURVEY
CONTROL BY: ARBITRAL PHOTOGRAPHY SYSTEMS AND PHOTOGRAMMETRY
GRID CHECKED: 1989
MAP EDITED: 1990
PROJECTION: TRANSVERSE MERCATOR
GRID: TRANSVERSE MERCATOR
GRID: TRANSVERSE MERCATOR
GRID: TRANSVERSE MERCATOR
UTM GRID DECLINATION: 0° 45' EAST
1990 MAGNETIC NORTH AMERICAN DATUM
HORIZONTAL DATUM: 1927 NORTH AMERICAN DATUM
To place on the predicted North American Datum of 1983, move the projection lines as shown by dashed corner ticks
UTM numbers may be revised in the future
Federal or State reservations shown on this map
Where omitted, land lines have not been established

DIAMOND PEAK, NEVADA
PROVISIONAL EDITION 1990
39115-E7-JF-024



1730000
38° 37' 30"
118° 30'
118° 37' 30"
35°
32° 30'
300000 FEET
300000 METERS
118° 52' 30"
119° 00' 00"

PRODUCED BY THE UNITED STATES GEOLOGICAL SURVEY
CONTROL BY AIRIAL PHOTOGRAPHY TRAINING CENTER, 1987
COMPILED BY: 1987
PROJECTION: TRANSVERSE MERCATOR
GRID: 1000-METER UNITS
UTM GRID DECLINATION: 0° 41' EAST
1990 MAGNETIC NORTH DECLINATION: 0° 13' EAST
To place on the predicted North American Datum of 1983,
move the projection lines as shown by dashed corner ticks
1:1 meters north and 7/6 meters west within the boundaries of any
Federal or State reservations shown on this map
Where omitted, land lines have not been established.

SCALE 1:24,000
KILOMETERS
METERS
FEET
CONTOUR INTERVAL 20 FEET
SUPPLEMENTARY CONTOUR INTERVAL 10 FEET
To convert meters to feet multiply by 2.208
To convert feet to meters multiply by 0.305

QUADRANGLE LOCATION

1	2	3	4	5	6	7	8
1	2	3	4	5	6	7	8

ADJOINING 7.5 QUADRANGLE NAMES

ROAD LEGEND
Improved Road
Unimproved Road
Trail
Intrastate Route
U.S. Route
State Route

PROVISIONAL MAP
Produced from original
manuscript drawings. Infor-
mation shown as of date of
field check.

THIS MAP COMPLIES WITH NATIONAL MAP ACCURACY STANDARDS
FOR SALE BY U.S. GEOLOGICAL SURVEY
DENVER, COLORADO 80225, OR RESTON, VIRGINIA 22092

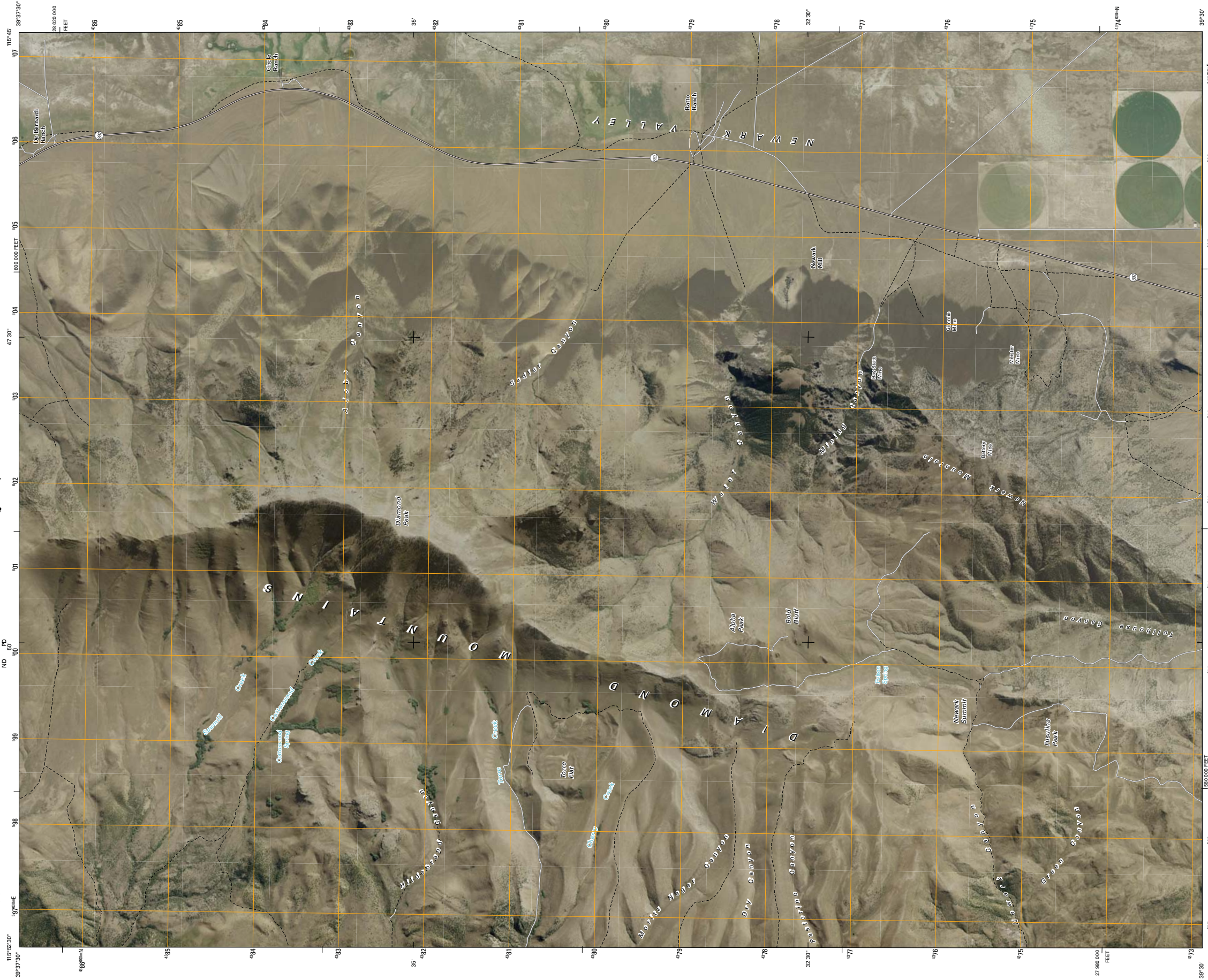
EUREKA, NEVADA
PROVISIONAL EDITION 1990
391115-88-TF-024



U.S. DEPARTMENT OF THE INTERIOR
U. S. GEOLOGICAL SURVEY



DIAMOND PEAK QUADRANGLE
NEVADA
7.5-MINUTE SERIES



Produced by the United States Geological Survey
using the National Map Accuracy Standards
and the National Geospatial Data
Interchange Model (NGDM) 1.0
Digital Elevation Model (DEM) 30-meter
resolution data (contour interval
100 feet)

Image: NIP, July 2006 - September 2006
National Topographic Data Base, 2008
National Geospatial Data Interchange Model (NGDM) 1.0
Digital Elevation Model (DEM) 30-meter
resolution data (contour interval
100 feet)

UTM GRID AND 2011 MAGNETIC NORTH
DECLINATION AT CENTER OF SHEET
U.S. National Grid
100,000 Meters Grid
Meters
100 200 300 400 500 600 700 800 900 1000
0° 45' N
12° 28' E
13° 00' E

SCALE 1:24 000
KILOMETERS
METERS
MILES
FEET

This map was produced to conform with version 0.0.26 of the
draft USGS Standards for 7.5-Minute Quadrangle Maps.
A metadata file associated with this product is also draft version 0.0.25

ROAD CLASSIFICATION
Interstate Route
US Route
Ramp
Interstate Route
US Route
State Route

QUADRANGLE LOCATION	
North of	Northwest
South of	Southwest
East of	East
West of	West
Northwest	Northwest
Southwest	Southwest
East	East
West	West
Northwest	Northwest
Southwest	Southwest
East	East
West	West

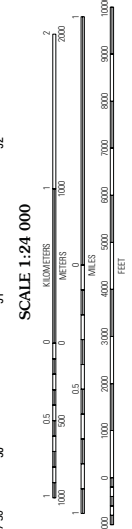
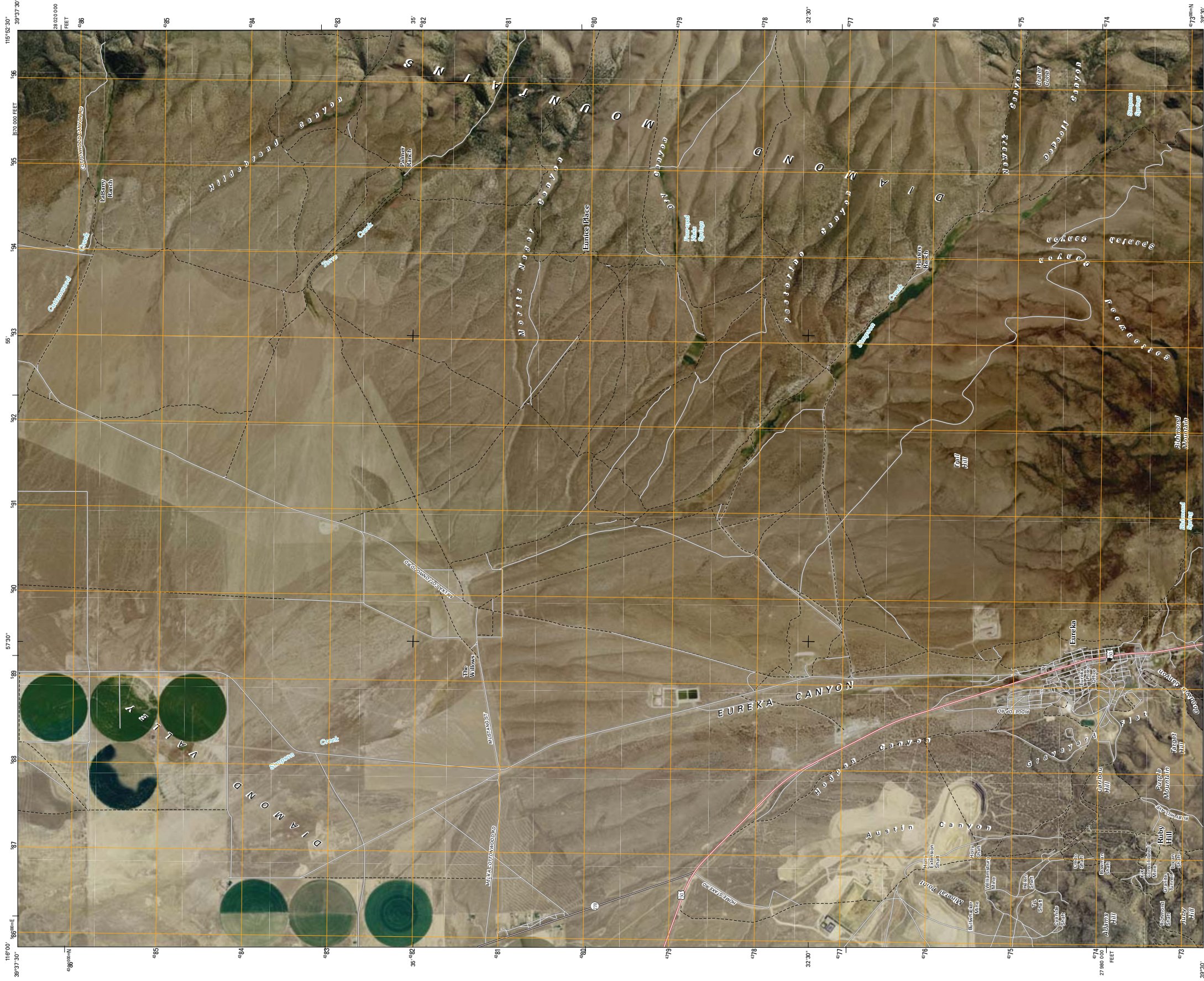
DIAMOND PEAK, NV
2009



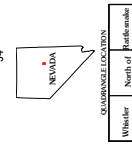
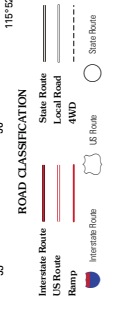
U.S. DEPARTMENT OF THE INTERIOR
U. S. GEOLOGICAL SURVEY



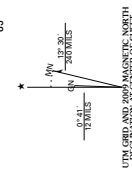
EUREKA QUADRANGLE
NEVADA
7.5-MINUTE SERIES



This map was produced to conform with version 0.0.25 of the draft USGS Standards for 7.5-Minute Quadrangle Maps. A metadata file associated with this product is also distributed (0.0.25).



ADJACENT QUADRANGLES	
Whitaker Mountain	North of Humboldt
Down	Humboldt
Spring Valley	Dissected Plateau
Valley Summit	White Mountain
White Mountain	White Mountain



Produced by the United States Geological Survey
North American Datum of 1983 (NAD83) Projection and
1,000-meter grid: Universal Transverse Mercator, Zone 118
(east zone)

Images: NADP, July 2006
Metadata: GNSIS, 2008

EUREKA, NV
2009