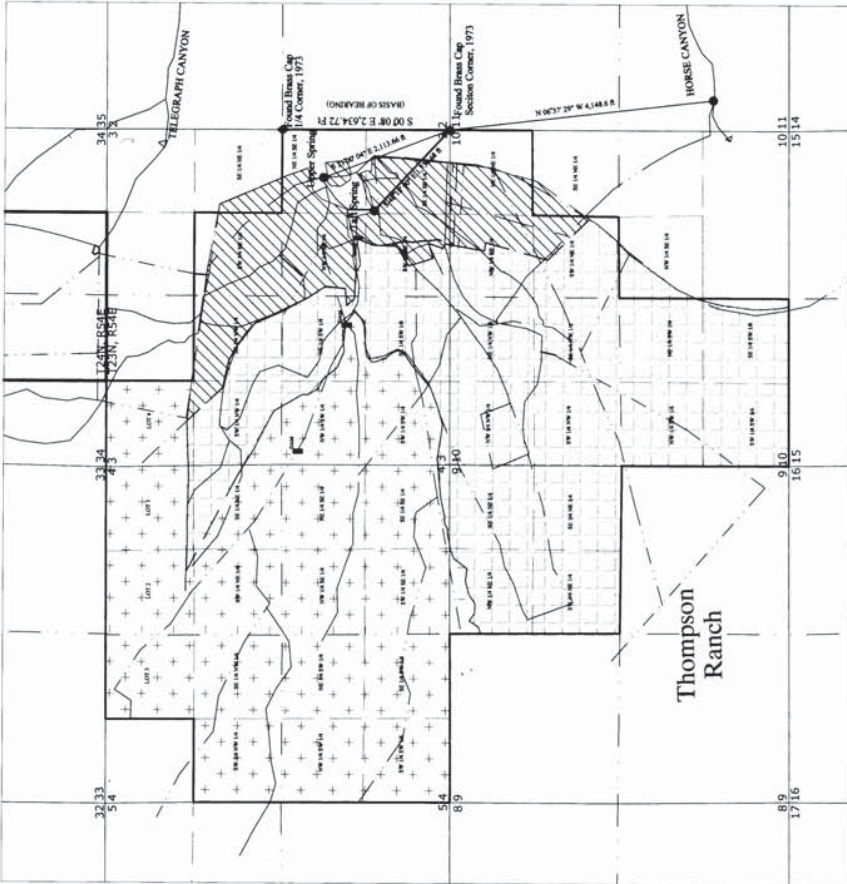


VENT_3

VENT_3



SECTION	SUBDIVISION	TOWNSHIP	DIVERSIFIED PASTURE	HAY	GRAIN/ALFALFA	TOTAL ACRES
3	LOT 4	T.23N., R.54E.	38,827		1.56	41.03
3	SW/4 NW/4	T.23N., R.54E.	6,65		3.55	40.00
3	SW/4 NE/4	T.23N., R.54E.			16.79	38.13
3	SE/4 NE/4	T.23N., R.54E.			7.79	32.51
3	NE/4 NE/4	T.23N., R.54E.	36.45		3.55	40.00
3	NW/4 SW/4	T.23N., R.54E.	12.52		26.30	40.00
3	SW/4 SW/4	T.23N., R.54E.	34.24		3.76	40.00
3	SE/4 SW/4	T.23N., R.54E.	7.76		3.76	40.00
3	NW/4 SE/4	T.23N., R.54E.			34.79	40.00
3	NE/4 SE/4	T.23N., R.54E.			5.21	12.56
3	SE/4 SE/4	T.23N., R.54E.	22.10		17.90	40.00
3	SW/4 SE/4	T.23N., R.54E.			24.44	24.44
4	LOT 1	T.23N., R.54E.	40.42		0.59	41.01
4	LOT 2	T.23N., R.54E.	40.45		0.50	40.95
4	LOT 3	T.23N., R.54E.	40.87			40.87
4	SW/4 NW/4	T.23N., R.54E.	40.00			40.00
4	SW/4 NE/4	T.23N., R.54E.	39.91		0.09	40.00
4	SE/4 NE/4	T.23N., R.54E.	38.72	1.28		40.00
4	NE/4 SW/4	T.23N., R.54E.	40.00			40.00
4	SW/4 SW/4	T.23N., R.54E.	40.00			40.00
4	SE/4 SW/4	T.23N., R.54E.	40.00			40.00
4	NW/4 SE/4	T.23N., R.54E.	40.00			40.00
4	SE/4 SE/4	T.23N., R.54E.	37.49		2.51	40.00
9	NW/4 NE/4	T.23N., R.54E.	8.26		31.74	40.00
9	NE/4 NE/4	T.23N., R.54E.			40.00	40.00
9	SE/4 NE/4	T.23N., R.54E.			40.00	40.00
10	NW/4 NW/4	T.23N., R.54E.			40.00	40.00
10	NE/4 NW/4	T.23N., R.54E.			40.00	40.00
10	SE/4 NW/4	T.23N., R.54E.			40.00	40.00
10	NW/4 NE/4	T.23N., R.54E.	38.26		15.82	40.00
10	NE/4 NE/4	T.23N., R.54E.			27.84	27.84
10	SE/4 NE/4	T.23N., R.54E.			10.52	38.36
10	SW/4 NE/4	T.23N., R.54E.			6.96	6.96
10	NW/4 SW/4	T.23N., R.54E.			40.00	40.00
10	NE/4 SW/4	T.23N., R.54E.			40.00	40.00
10	SE/4 SW/4	T.23N., R.54E.			40.00	40.00
10	NW/4 SE/4	T.23N., R.54E.			40.00	40.00
10	NE/4 SE/4	T.23N., R.54E.			13.03	13.03

TOTAL CULTIVATED ACREAGE 1,636.36 ACRES

STATE OF NEVADA
COUNTY OF WASHOE

I, GEORGE M. THIEL, BEING FIRST DULY SWORN, DEPOSE AND SAY THAT SITE INSPECTIONS HAVE BEEN MADE BY ME, OR UNDER MY SUPERVISION AND DIRECTION, ON THE SE QUARTER OF SECTION 3, T.23N., R.54E., M.D.B.&M., BEARING S. 00°08' E. A DISTANCE OF 2,634.72 FT FEET AS SHOWN ON THAT CERTAIN RECORD OF SURVEY BY JAMES R. MUNSON, CADASTRAL SURVEYOR, ACCEPTED BY THE UNITED STATES DEPARTMENT OF THE INTERIOR BUREAU OF LAND MANAGEMENT ON DECEMBER 10, 1975.

BASIS OF BEARINGS

THE EAST LINE OF THE SE QUARTER OF SECTION 3, T.23N., R.54E., M.D.B.&M. BEARING S. 00°08' E. A DISTANCE OF 2,634.72 FT FEET AS SHOWN ON THAT CERTAIN RECORD OF SURVEY BY JAMES R. MUNSON, CADASTRAL SURVEYOR, ACCEPTED BY THE UNITED STATES DEPARTMENT OF THE INTERIOR BUREAU OF LAND MANAGEMENT ON DECEMBER 10, 1975.

LEGEND

- + + + - DIVERSIFIED PASTURE
- - - - HAY
- ▨ - GRAIN/ALFALFA
- - POINT OF DIVERSION
- - - - CANYONS, DITCHES, SPRING DISCHARGE
- — — — PARCEL BOUNDARY
- ◇ - FOUND SECTION CORNER AS NOTED
- ◆ - FOUND QUARTER CORNER AS NOTED



SUBSCRIBED AND SWORN TO BEFORE ME

THIS 12th day of March, 2013

Notary Public in and for Washoe County, Nevada

My Commission Expires April 13, 2014



FEBRUARY 13, 2013

Sheet 1 of 1

STATE ENGINEER'S USE

V 01111

MAP TO ACCOMPANY PROOF OF APPROPRIATION

BY DANIEL S. VENTURACCI

FOR IRRIGATION, STOCKWATER, & DOMESTIC USE FROM HORSE CANYON AND SPRINGS

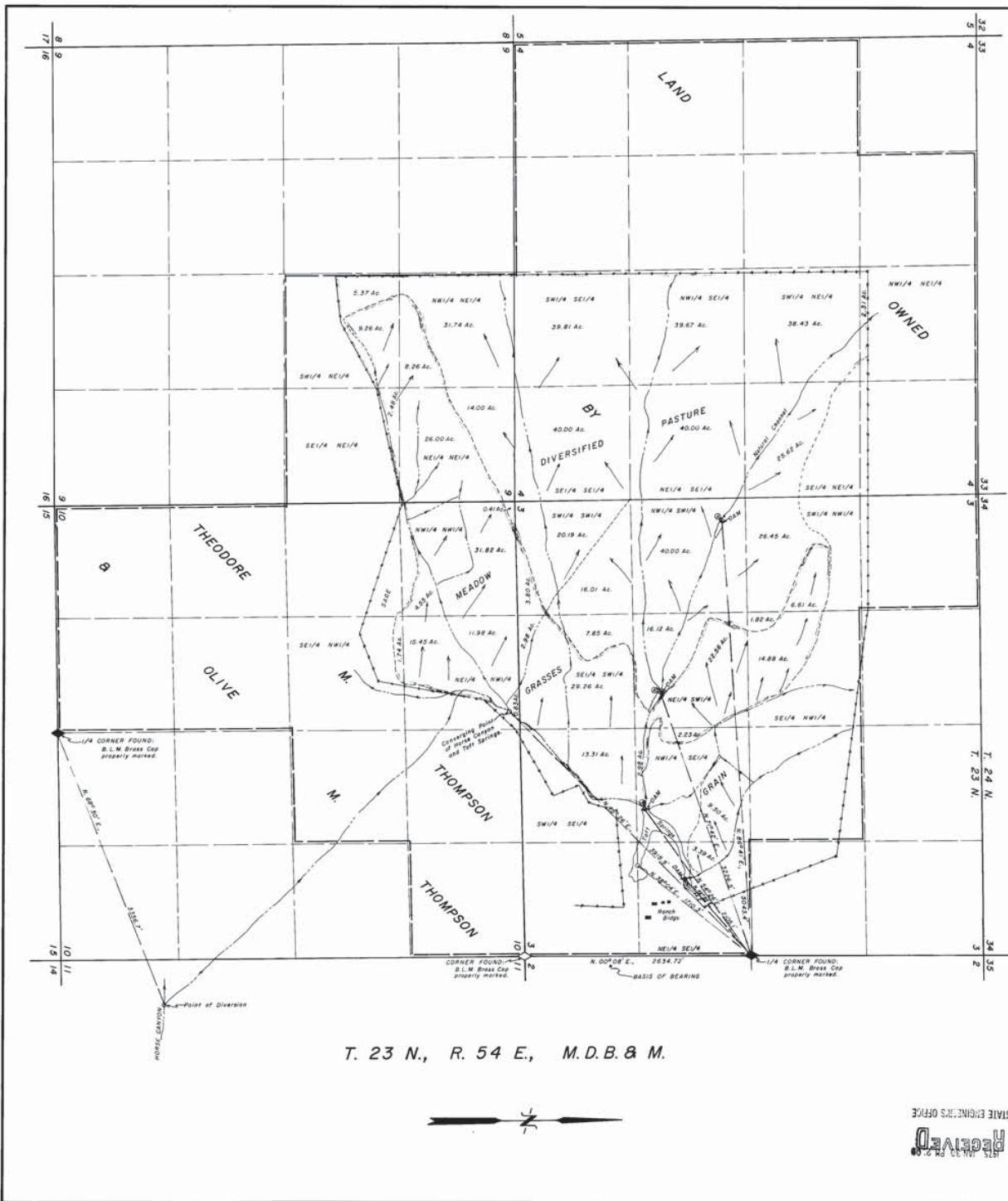


RECEIVED
DIVISION OF WATER RIGHTS
STATE OF NEVADA

EUREKA COUNTY

NEVADA

V001115 V001114



HORSE CANYON						
SECTION	SUBDIVISION	TOWNSHIP	RANGE	CULTIVATED ACREAGE	DESCRIPTION OF CULTURE	DATE OF FIRST CULTURE
9	SW 1/4 NE 1/4	23 N	54 E	8.37	Diversified Pasture	-
9	NW 1/4 NE 1/4	23 N	54 E	31.74	-	-
9	NE 1/4 NE 1/4	23 N	54 E	14.00	-	-
10	NW 1/4 NW 1/4	23 N	54 E	0.41	-	-
4	SW 1/4 SE 1/4	23 N	54 E	39.81	-	-
4	SE 1/4 SE 1/4	23 N	54 E	40.00	-	-
3	SW 1/4 SW 1/4	23 N	54 E	20.19	-	-
9	SW 1/4 NE 1/4	23 N	54 E	9.26	Meadow Grasses	-
9	NW 1/4 NE 1/4	23 N	54 E	8.26	-	-
9	SE 1/4 NE 1/4	23 N	54 E	2.48	-	-
9	NE 1/4 NE 1/4	23 N	54 E	26.00	-	-
10	NW 1/4 NW 1/4	23 N	54 E	36.37	-	-
10	SE 1/4 NW 1/4	23 N	54 E	1.74	-	-
10	NE 1/4 NW 1/4	23 N	54 E	27.43	-	-
3	SW 1/4 SW 1/4	23 N	54 E	3.80	-	-
3	SE 1/4 SW 1/4	23 N	54 E	2.18	-	-
				TOTAL ACREAGE	269.84 ACRES	

TAFT SPRINGS						
SECTION	SUBDIVISION	TOWNSHIP	RANGE	CULTIVATED ACREAGE	DESCRIPTION OF CULTURE	DATE OF FIRST CULTURE
9	SW 1/4 NE 1/4	23 N	54 E	8.37	Diversified Pasture	-
9	NW 1/4 NE 1/4	23 N	54 E	31.74	-	-
9	NE 1/4 NE 1/4	23 N	54 E	14.00	-	-
10	NW 1/4 NW 1/4	23 N	54 E	0.41	-	-
4	SW 1/4 SE 1/4	23 N	54 E	39.81	-	-
4	NW 1/4 SE 1/4	23 N	54 E	39.87	-	-
4	SW 1/4 NE 1/4	23 N	54 E	38.43	-	-
4	NW 1/4 NE 1/4	23 N	54 E	2.31	-	-
4	SE 1/4 SE 1/4	23 N	54 E	40.00	-	-
4	NE 1/4 SE 1/4	23 N	54 E	40.00	-	-
4	SE 1/4 NE 1/4	23 N	54 E	25.82	-	-
3	SW 1/4 SW 1/4	23 N	54 E	36.20	-	-
3	NW 1/4 SW 1/4	23 N	54 E	40.00	-	-
3	SW 1/4 NW 1/4	23 N	54 E	24.85	-	-
3	SE 1/4 SW 1/4	23 N	54 E	7.83	-	-
3	NE 1/4 SW 1/4	23 N	54 E	16.12	-	-
3	SE 1/4 NW 1/4	23 N	54 E	1.82	-	-
9	SW 1/4 NE 1/4	23 N	54 E	9.26	Meadow Grasses	-
9	NW 1/4 NE 1/4	23 N	54 E	8.26	-	-
9	SE 1/4 NE 1/4	23 N	54 E	2.48	-	-
9	NE 1/4 NE 1/4	23 N	54 E	26.00	-	-
10	NW 1/4 NW 1/4	23 N	54 E	31.82	-	-
10	NE 1/4 NW 1/4	23 N	54 E	12.87	-	-
3	SW 1/4 SW 1/4	23 N	54 E	3.80	-	-
3	SE 1/4 SW 1/4	23 N	54 E	32.74	-	-
3	NE 1/4 SW 1/4	23 N	54 E	22.56	-	-
3	SE 1/4 NW 1/4	23 N	54 E	14.68	-	-
3	SW 1/4 NW 1/4	23 N	54 E	6.71	-	-
3	SW 1/4 SE 1/4	23 N	54 E	13.31	-	-
3	NW 1/4 SE 1/4	23 N	54 E	5.21	-	-
3	NW 1/4 SE 1/4	23 N	54 E	8.80	Grain	-
3	NE 1/4 SE 1/4	23 N	54 E	3.39	-	-
				TOTAL ACREAGE	607.93 ACRES	

STATE OF NEVADA } ss
 County of White Pine

I, Richard W. Forman, being first duly sworn, depose and say that this map, consisting of one sheet, has been correctly drawn to the designated scale from field notes of a survey made by me between the 4th day of November, and the 18th day of November, 1974; that it truly and correctly represents the location and extent of the works used to divert water from Horse Canyon and Taft Springs in Eureka County, by Theodore M. Thompson and Olive M. Thompson for irrigation and stockwatering purposes. That the point of diversion, the location and size of the diverting channel, the place and manner of use, the location and names of all other works or streams which are crossed or connected with said works, and the boundary, area and kind of culture of lands irrigated are correctly shown and designated hereon.

Richard W. Forman
 State Water Right Surveyor

Subscribed and sworn to before me this 21st day of November, 1974.

Marcia Tomson
 Notary Public in and for White Pine County, Nevada.



NOTES:
 ⊙ = Taft Springs Point of Diversion.
 [Dashed Line] = Diversified Pasture
 [Stippled Area] = Meadow Grasses
 [White Area] = Grain

0 500 1000 1800 2400
 SCALE 1" = 600'

AMENDED
 MAP TO ACCOMPANY
 PROOF OF APPROPRIATION
 FOR IRRIGATION & STOCKWATERING
 THEODORE M. THOMPSON
 & OLIVE M. THOMPSON
 FROM HORSE CANYON & TAFT SPRINGS

SURVEYED & MAPED
 BY
 BOUNDY & FORMAN, INC.
 ELY, NEVADA
 NOVEMBER, 1974

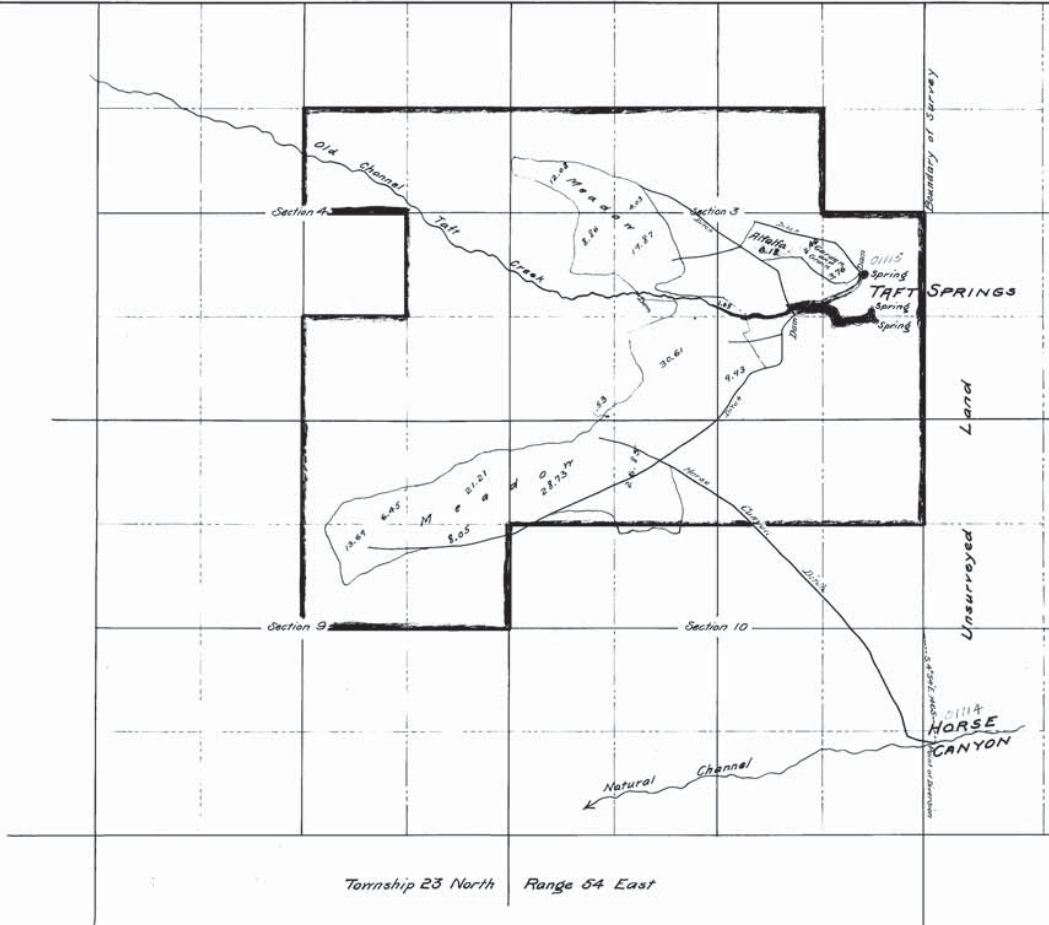
STATE ENGINEERS OFFICE
 RECEIVED

81825

AMENDED 01115, 01114 - Filed Under

Township Line

0114-0115



Section	Area	Remarks
Section 4	1.25	
Section 9	1.25	
Section 10	1.25	
Section 11	1.25	
Section 12	1.25	
Section 13	1.25	
Section 14	1.25	
Section 15	1.25	
Section 16	1.25	
Section 17	1.25	
Section 18	1.25	
Section 19	1.25	
Section 20	1.25	
Section 21	1.25	
Section 22	1.25	
Section 23	1.25	
Section 24	1.25	
Section 25	1.25	
Section 26	1.25	
Section 27	1.25	
Section 28	1.25	
Section 29	1.25	
Section 30	1.25	
Section 31	1.25	
Section 32	1.25	
Section 33	1.25	
Section 34	1.25	
Section 35	1.25	
Section 36	1.25	
Section 37	1.25	
Section 38	1.25	
Section 39	1.25	
Section 40	1.25	

Control and Traft located by H.H. Hester, 6-27-16.

Township 23 North Range 64 East

STATE OF NEVADA } ss
 County of Eureka)
 Geo. S. Nickerson of Sacramento, Cal, hereby certify that the above map is a true and accurate plot of the Horse Canyon and Taft Springs irrigation marks, as taken from the field notes of a survey made by me on May 29 to and at, and at the instance of Nels Toft; that it represents the marks described in the accompanying Proof of Appropriation, together with the location of streams and ditches in the immediate vicinity.

Geo. S. Nickerson
 Surveyor

Scale: 1 inch = 800 feet

Lands Irrigated By
NELS TOFT
 From
 WATERS OF HORSE CANYON
 and
 TRAFT SPRINGS
 EUREKA COUNTY
 NEVADA



PROOF OF APPROPRIATION No

0114-0115