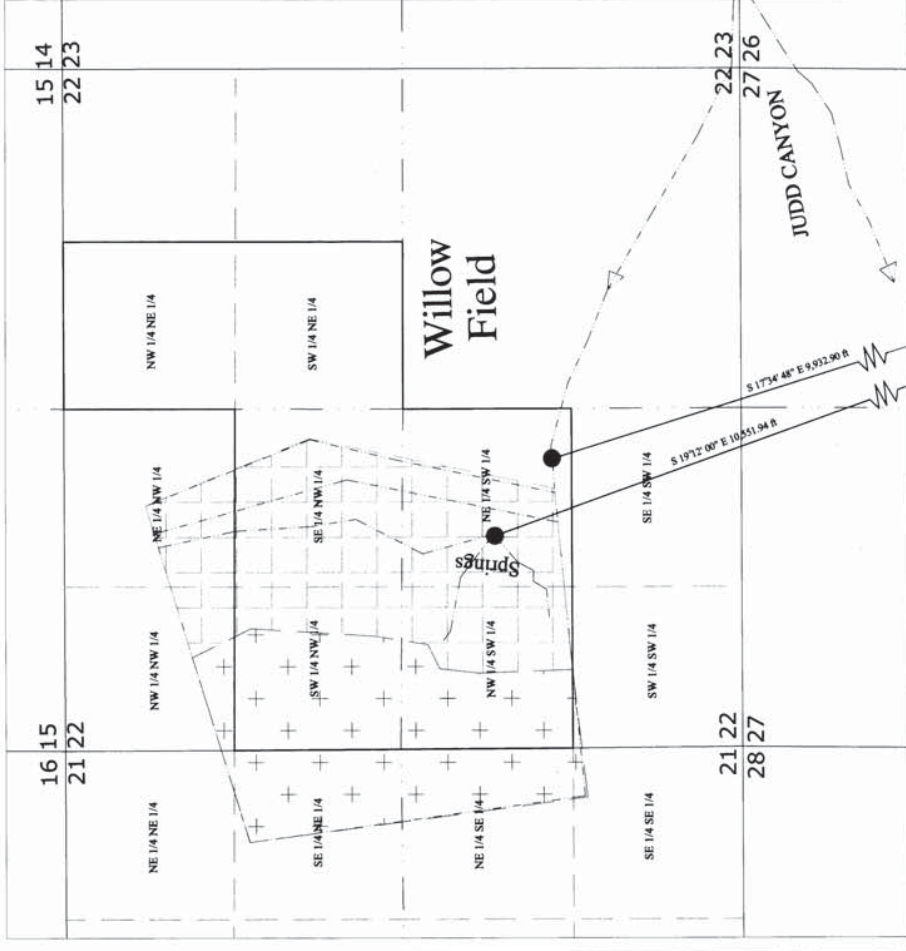


VENT_9

VENT_9



- LEGEND**
- DIVERSIFIED PASTURE
 - RYE GRASS
 - POINTS OF DIVERSION
 - CANYONS, DITCHES, SPRING DISCHARGE
 - PARCEL BOUNDARY
 - FOUND SECTION CORNER AS NOTED
 - FOUND QUARTER CORNER AS NOTED



T24N, R54E 34, 35
T23N, R54E 32

Found Brass Cap
Section Corner, property marked

BASIS OF BEARINGS

THE EAST LINE OF THE SE QUARTER OF SECTION 34, T.24N., R.54E., M.D.B.&M. BEARING N. 00°32' W., A DISTANCE OF 2,640.00 FT FEET AS SHOWN ON THAT CERTAIN RECORD OF SURVEY BY JAMES W. HUNTER AND COMPANY, CIVIL ENGINEERS, SURVEYORS, ACCEPTED BY THE UNITED STATES DEPARTMENT OF THE INTERIOR BUREAU OF LAND MANAGEMENT ON DECEMBER 10, 1975.

N 00°32' W 2,640.00 FT
(BASIS OF BEARING)

T.24N., R.54E., M.D.B.&M.

Found Brass Cap
1/4 Corner, property marked

CULTURE TABLE

SECTION	SUBDIVISION	WANSUP, RYE GRASS PASTURE	DIVERSIFIED PASTURE	TOTAL
21	NE 1/4 NE 1/4 T24N, R54E		0.38	0.38
21	SE 1/4 NE 1/4 T24N, R54E		18.88	18.88
21	NE 1/4 SE 1/4 T24N, R54E		14.62	14.62
21	SE 1/4 SE 1/4 T24N, R54E		0.67	0.67
22	NW 1/4 NW 1/4 T24N, R54E	4.66	4.19	8.85
22	SW 1/4 NW 1/4 T24N, R54E	10.97	29.03	40
22	SE 1/4 NW 1/4 T24N, R54E	32.25		32.25
22	NW 1/4 SW 1/4 T24N, R54E	18.56		18.56
22	SW 1/4 SW 1/4 T24N, R54E	24.96	20.06	38.62
22	SE 1/4 SW 1/4 T24N, R54E		0.41	0.41

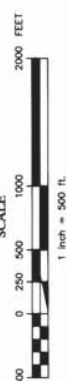
TOTAL: 190.59 ACRES

STATE OF NEVADA
COUNTY OF WASHOE

I, GEORGE M. THIEL, BEING FIRST DULY SWORN, DEPOSE AND SAY THAT SITE INSPECTIONS HAVE BEEN MADE BY ME AND OTHERS AS SHOWN ON THIS MAP, AND THAT THE MONUMENTS AND MARKS THEREON ARE TRUE TO THE LOCATION OF EACH REFERENCE MONUMENT HAS BEEN VERIFIED BY SITE INSPECTION; THAT THE PLACE OF USE SITES HAVE BEEN INSPECTED; THAT THIS MAP, CONSISTING OF 1 SHEET, HAS BEEN CORRECTLY DRAWN TO THE DESIGNATED SCALE FROM SURVEYING CALCULATION NOTES PREPARED BY ME, OR UNDER MY SUPERVISION AND DIRECTION, RELYING UPON ANALYSIS OF RECORDED SURVEY MAPS AND OTHER RECORDED SURVEYING DOCUMENTS ON FILE IN THE OFFICE OF THE COUNTY CLERK OF WASHOE COUNTY, NEVADA; THAT THIS MAP TRULY AND CORRECTLY REPRESENTS THE LOCATION AND EXTENT OF WORKS USED TO DIVERT WATER FROM JUDD CANYON AND SPRINGS, IN EUREKA COUNTY, NEVADA BY DANIEL S. VENTURACCI, FOR IRRIGATION, STOCKWATER & DOMESTIC PURPOSES; THAT THE POINTS OF DIVERSION, LOCATION AND NAMES OF ALL WORKS WHICH WILL CROSS OR CONNECT WITH THE SAID WORKS ARE FULLY SHOWN ON THIS MAP AND THAT ALL NECESSARY AREAS SERVED, AND KINDS OF CULTURE OF LANDS IRRIGATED, ARE FULLY AND CORRECTLY DESIGNATED THEREON.



SUBSCRIBED AND SWORN TO BEFORE ME
THIS 12th DAY OF March, 2013.
Sandra S. Worsley
NOTARY PUBLIC IN AND FOR WASHOE COUNTY, NEVADA
MY COMMISSION EXPIRES APRIL 13, 2014.



FEBRUARY 13, 2013
Sheet 1 of 1

STATE ENGINEER'S USE

MAP TO ACCOMPANY
PROOF OF APPROPRIATION
BY
DANIEL S. VENTURACCI
FOR
IRRIGATION, STOCKWATER, & DOMESTIC USE
FROM JUDD CANYON & SPRINGS

EUREKA COUNTY
NEVADA

V010368