

VENT_13

VENT_13

STATE OF NEVADA
COUNTY OF WASHOE

I, GEORGE M. THIEL, BEING FIRST DULY SWORN, DEPOSE AND SAY THAT SITE INSPECTIONS HAVE BEEN MADE BY ME, OR UNDER MY SUPERVISION AND DIRECTION, ON OR BEFORE APRIL 3, 2016; THAT THE LOCATION OF EACH REFERENCE MONUMENT HAS BEEN VERIFIED BY SITE INSPECTION, THAT THE PLACE OF USE SITES HAVE BEEN INSPECTED, THAT THIS MAP, CONSISTING OF THE SURVEY, HAS BEEN CONDUCTED BY ME OR UNDER MY SUPERVISION AND DIRECTION, RELYING UPON AN ANALYSIS OF RECORDED SURVEY MAPS AND OTHER RECORDED SURVEYING DOCUMENTS ON FILE IN THE OFFICE OF THE STATE ENGINEER AND THE EUREKA COUNTY RECORDER'S OFFICE; THAT THIS MAP TRULY AND CORRECTLY REPRESENTS THE LOCATION AND EXTENT OF THE WORKS USED TO DIVERT WATER FROM A SPRING SOURCE, IN EUREKA COUNTY, NEVADA, BY THIEL ENGINEERING FOR IRRIGATING AND DOMESTIC USES OF SPRINGS, OR STREAMS, WHICH ARE CROSSED BY OR CONNECTED WITH SAID WORKS, ARE FULLY AND CORRECTLY DESIGNATED HEREON.



SUBSCRIBED AND SWORN TO BEFORE ME
THIS 21st DAY OF MAY, 2016
George M. Thiel
NOTARY PUBLIC IN AND FOR Washoe COUNTY, NEVADA.
MY COMMISSION EXPIRES August 14, 2016.



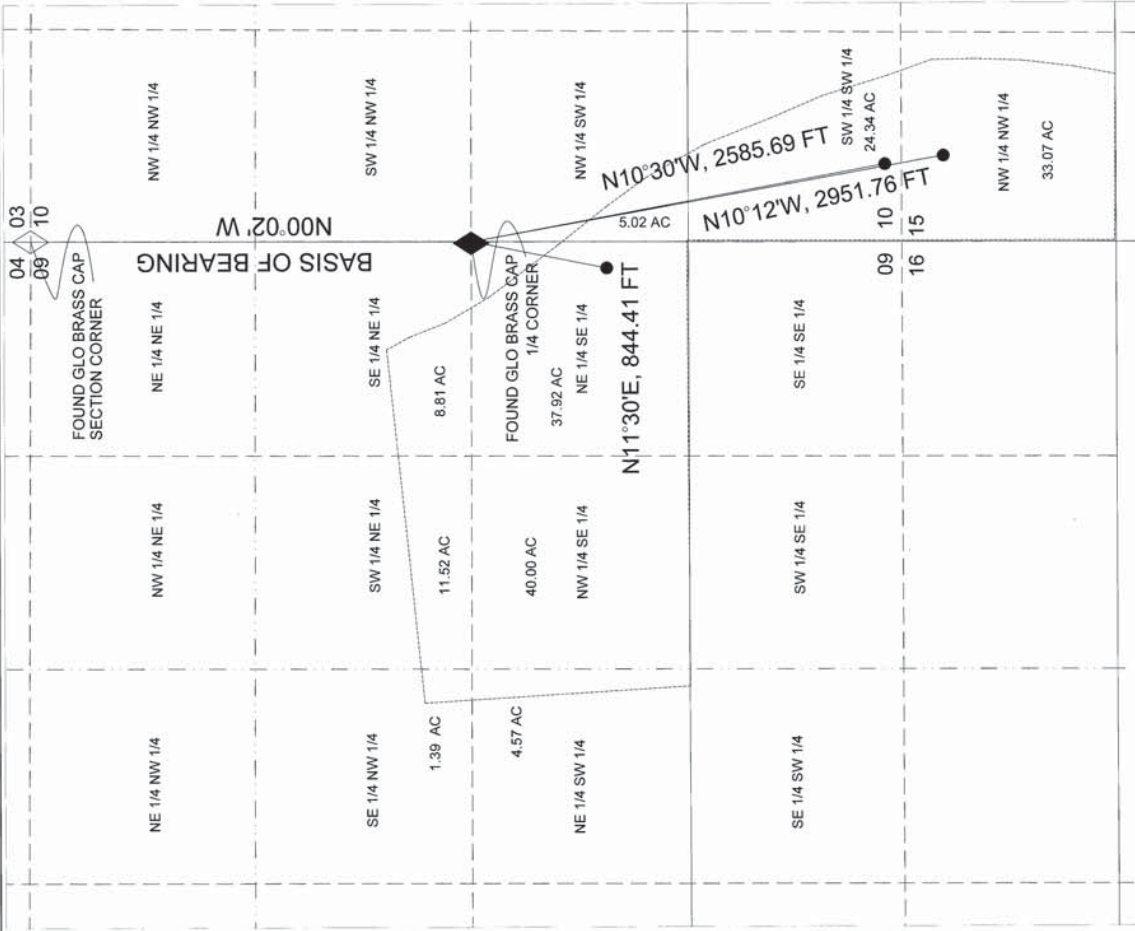
1/4	SEC	T	R	AC	CULTURE	DATE
SE	NW	9	24N	54E	1.3900	MEADOW HAY
NE	SW	9	24N	54E	4.5700	MEADOW HAY
SW	NE	9	24N	54E	11.5200	MEADOW HAY
NW	SE	9	24N	54E	40	MEADOW HAY
SE	NE	9	24N	54E	8.8100	MEADOW HAY
NE	SE	9	24N	54E	37.9200	MEADOW HAY
NW	SW	10	24N	54E	5.0200	MEADOW HAY
SW	SW	10	24N	54E	24.3400	MEADOW HAY
NW	NW	15	24N	54E	33.0700	MEADOW HAY
				TOTAL	166.6400	

BASIS OF BEARINGS

THE EAST LINE OF THE NE QUARTER OF SECTION 9, T24N, R54E, MDB&M, COUNTY OF WASHOE, NEVADA, CERTAIN WATER RIGHTS MAP FILED UNDER PERMIT 36311



MAY 30, 2016 Sheet 1 of 1



POINTS OF DIVERSION

NE 1/4 SE 1/4 SECTION 9, SW 1/4 SW 1/4 SECTION 10, NW 1/4 NW 1/4 SECTION 15, T24N, R54E, MDB&M, EUREKA COUNTY, NEVADA



LEGEND

- - POINT OF DIVERSION
- ◇ - FOUND SECTION CORNER AS NOTED
- ◆ - FOUND QUARTER CORNER AS NOTED

STATE ENGINEER'S USE 10/13 RECEIVED
FILED
MAY 11 2016
EUREKA COUNTY OFFICE

MAP TO ACCOMPANY PROOF OF APPROPRIATION BY MULTON THOMPSON FOR IRRIGATOR AND DOMESTIC USE FROM SPRING SOURCES

EUREKA COUNTY

NEVADA

V10973