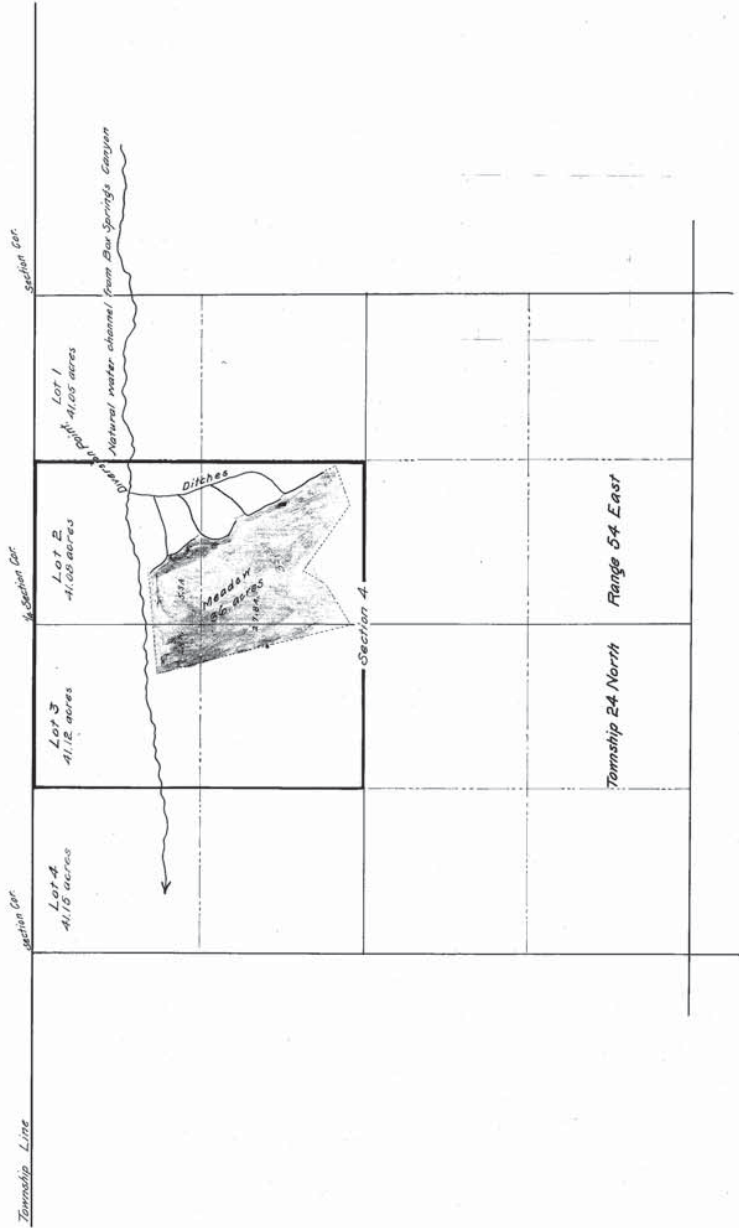


VENT_16

VENT_16



JORGEN P. JACOBSEN
 Waters of
BOX SPRINGS CANYON
 Eureka County
 Nevada



Scale: 1 inch = 500 feet

STATE OF NEVADA, ss.
 I, **Geo. E. Robinson**, of Larimer County, Nevada, do hereby certify that the above map is a true and accurate plan of the Box Springs Canyon Waters of Eureka County, Nevada, as shown on the map of the same waters of the said county, and that the same were surveyed and returned to me by the said Jorgen P. Jacobsen, and that I represent the same as such and in proof of Appropriation, do hereby certify together with the location of streams and ditches on the immediate vicinity thereof.
Geo. E. Robinson, Surveyor.

PROOF OF APPROPRIATION No. 01111