

VENT_17

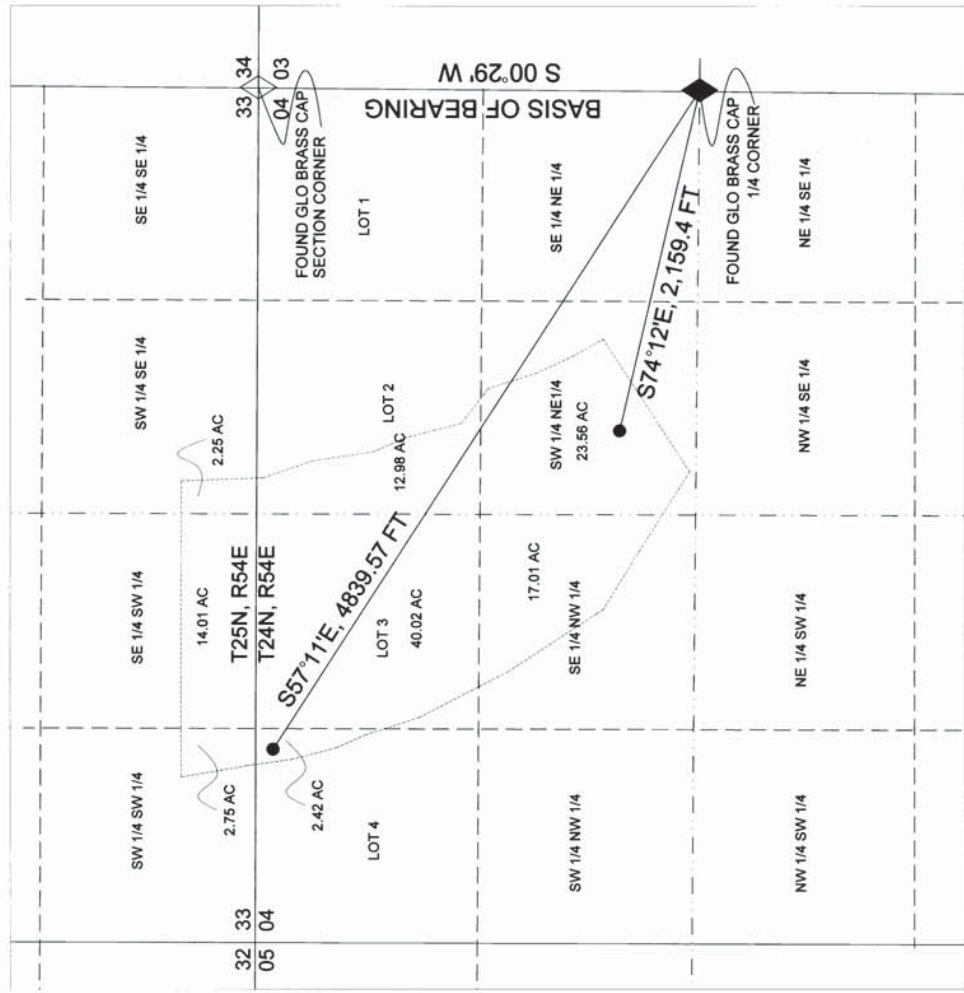
VENT_17

STATE OF NEVADA
COUNTY OF WASHOE

I, GEORGE M. THIEL, BEING FIRST DULY SWORN, DEPOSE AND SAY THAT SITE INSPECTIONS HAVE BEEN MADE BY ME, OR UNDER MY SUPERVISION AND DIRECTION, ON OR BEFORE APRIL 3, 2016; THAT THE LOCATION OF EACH REFERENCE MONUMENT HAS BEEN VERIFIED BY SITE INSPECTION; THAT THE PLACE OF USE SITES HAVE BEEN INSPECTED; THAT THIS MAP, CONSISTING OF THIS SHEET, HAS BEEN CORRECTLY DRAWN TO THE BEST OF MY KNOWLEDGE AND BELIEF; THAT THIS MAP IS A TRUE AND CORRECT REPRESENTATION OF THE DIRECTION RELYING UPON ANALYSIS OF RECORDED SURVEY MAPS AND OTHER RECORDED SURVEY DOCUMENTS ON FILE IN THE OFFICE OF THE STATE ENGINEER AND THE EUREKA COUNTY RECORDER'S OFFICE; THAT THIS MAP TRULY AND CORRECTLY REPRESENTS THE LOCATION AND EXTENT OF THE WORKS USED TO DIVERT WATER FROM A SPRING SOURCE, IN EUREKA COUNTY, NEVADA, BY T-111110, T-111111, T-111112, T-111113 AND T-111114; THAT THE POINTS OF DIVERSION, THE PLACE OF USE, AND THE LOCATION OF EACH MONUMENT, WHICH ARE CROSSED BY OR CONNECTED WITH SAID WORKS, ARE FULLY AND CORRECTLY DESIGNATED HEREON.



SUBSCRIBED AND SWORN TO BEFORE ME
THIS 03RD DAY OF MAY, 2016.
NOTARY PUBLIC IN AND FOR WASHINGTON COUNTY, NEVADA.
MY COMMISSION EXPIRES August 14, 2016.



CULTURE TABLE - MAU RANCH

T	R	AC	CULTURE	DATE
SW	25N	54E	MEADOW HAY	
SE	25N	54E	MEADOW HAY	
SW	25N	54E	MEADOW HAY	
SE	25N	54E	MEADOW HAY	
LOT 4	4	24N	MEADOW HAY	
LOT 3	4	54E	MEADOW HAY	
LOT 2	4	24N	MEADOW HAY	
SE	24N	54E	MEADOW HAY	
NE	24N	54E	MEADOW HAY	
TOTAL		115.0000		

BASIS OF BEARINGS

THE EAST LINE OF THE NE QUARTER OF SECTION 4, T24N, R54E, MDB&M BEARING S 00°29' W, AS SHOWN ON THAT CERTAIN RECORD OF SURVEY BY JAMES R. MUNSON AND JOHN S. MURPHY, AS APPLICABLE BY THE UNITED STATES DEPARTMENT OF THE INTERIOR, BUREAU OF LAND MANAGEMENT, ON DECEMBER 10, 1975.



MAY 30, 2016 Sheet 1 of 1

POINTS OF DIVERSION

LOT 4, SW 1/4 NE 1/4, SECTION 04, T24N, R54E, MDB&M,
EUREKA COUNTY, NEVADA



LEGEND

- - POINT OF DIVERSION
- ◇ - FOUND SECTION CORNER AS NOTED
- ◆ - FOUND QUARTER CORNER AS NOTED

STATE ENGINEERS USE 16973-16973
MAY 31 2016
RECEIVED
STATE ENGINEER'S OFFICE
MAY 31 2016
MULLEN-THIEL & ASSOCIATES
STATE ENGINEERS

MAP TO ACCOMPANY PROOF OF APPROPRIATION BY MULLEN-THIEL & ASSOCIATES FOR IRRIGATION AND DOMESTIC USE FROM SPRING SOURCES

EUREKA COUNTY NEVADA

V10972