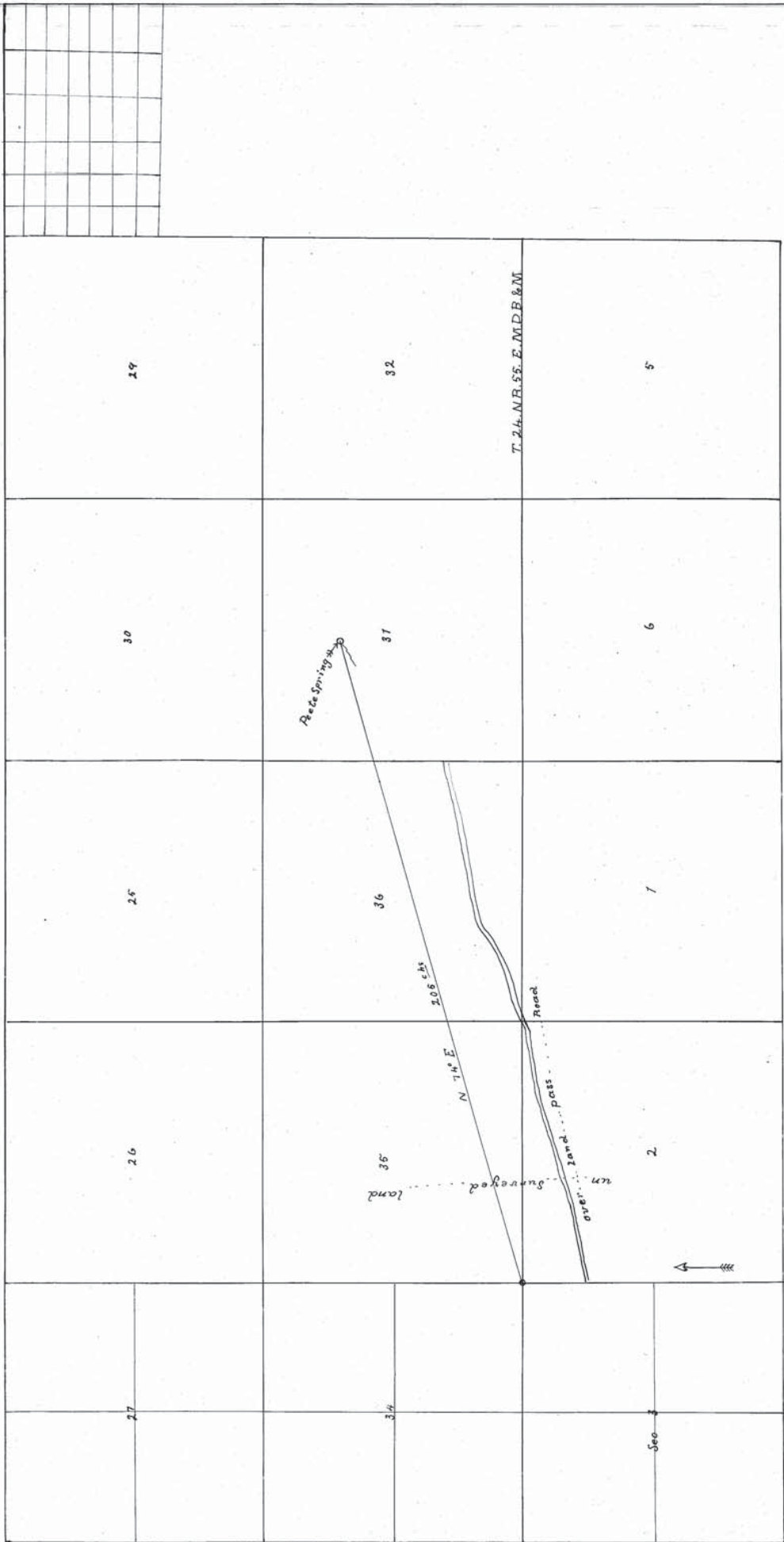


**VENT\_82**

**VENT\_82**



T. 23. N. R. 54. E. M. D. B. & M.

T. 23. N. R. 55. E. M. D. B. & M.

Scale 1056 Ft one inch.

*Finches, Mr. June 24th 1914*  
 H.C. Madelind says that the above map is a true and accurate  
 plat of Peete Spring as taken from the US Government  
 plat and was made by me at the instance of  
 Nelson on the 28th day of May 1914

H.C. Madelind

Surveyor  
 subscribed and sworn to before me  
 on this the 30th day of June  
 Notary Public in and for Esmeralda County Nevada

