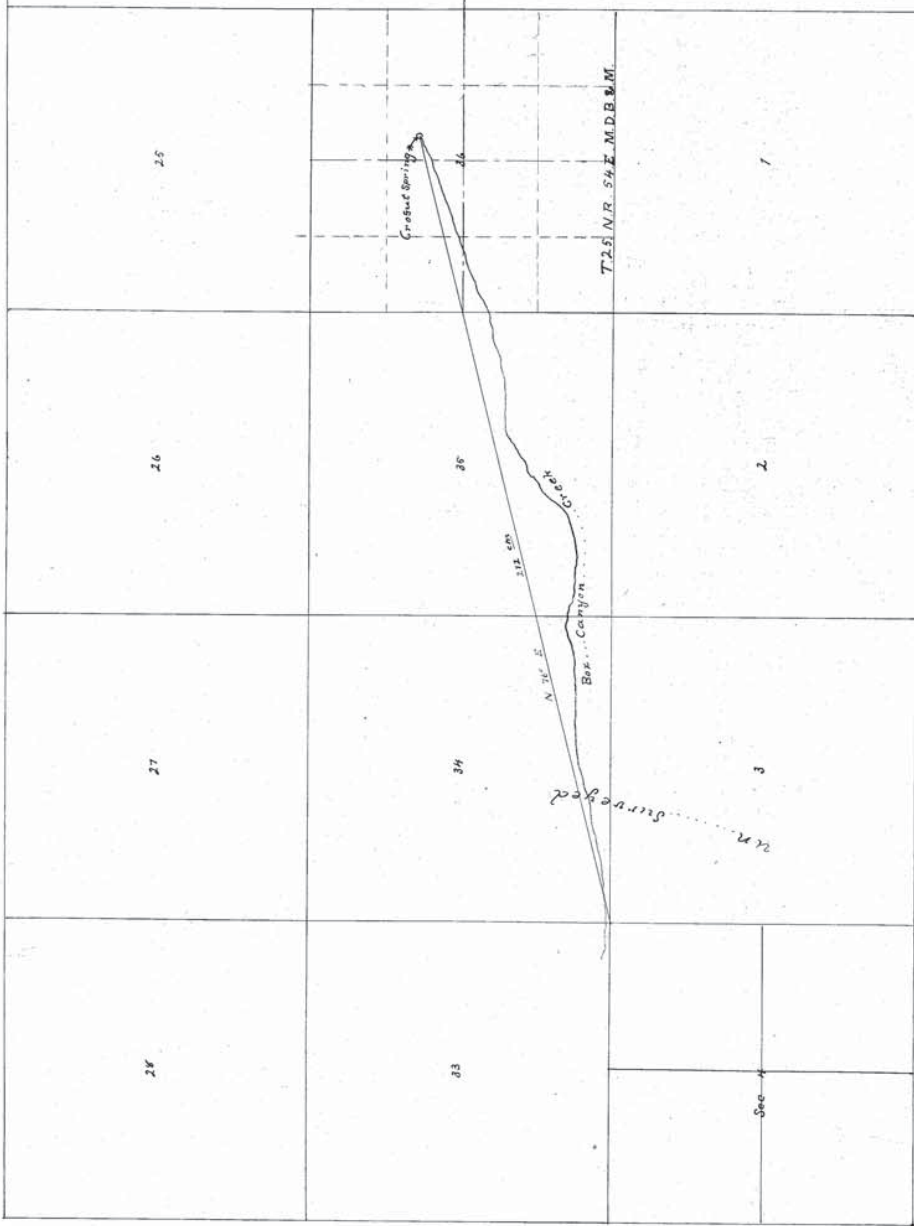


VENT_83

VENT_83



T. 25 N. R. 54 E. M. D. B. & M.
Scale 1086 Ft one inch
or 170'

Eureka Nov. June 20th 1914
H. C. Wedekind first being duly sworn deposes
and says that the above map is a true and accurate
plot as Crest Spring at taken from the US Government
survey and was made by me at the instance of
Johan Jacobsen and was completed on the 27th day of May 1914
H. C. Wedekind
Surveyor
Subscribed and sworn to before me
on this 24th day of June 1914
J. W. Jacobsen, County
Notary Public in and for Eureka County Nev

5750
372
520
180
440