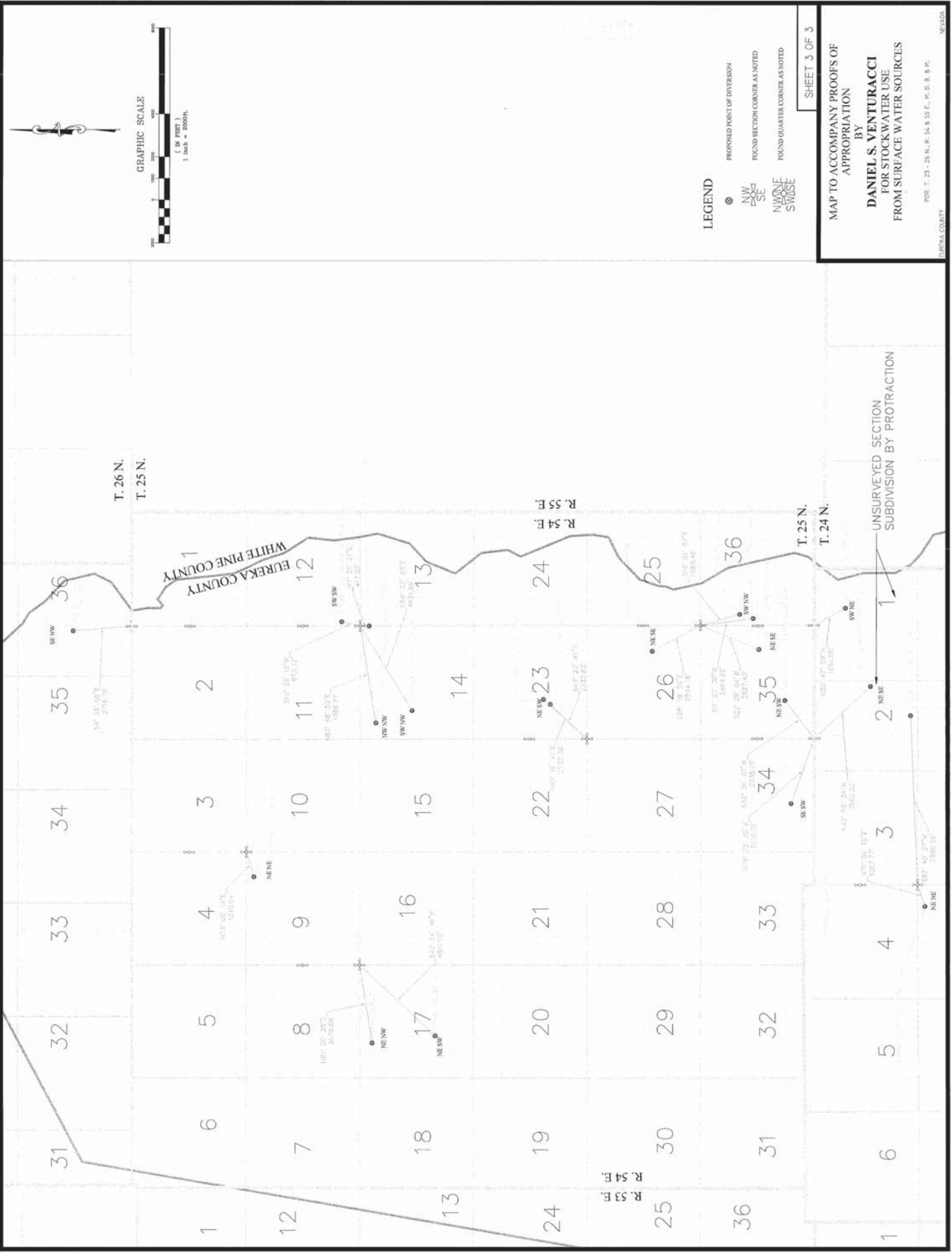


VENT_85

VENT_85



GRAPHIC SCALE
(IN FEET)
1 inch = 800 ft.

LEGEND
 ○ PROPOSED POINT OF DIVERSION
 ● FOUND SECTION CORNER AS NOTED
 ● FOUND QUARTER CORNER AS NOTED

SHEET 3 OF 3

MAP TO ACCOMPANY PROOFS OF APPROPRIATION

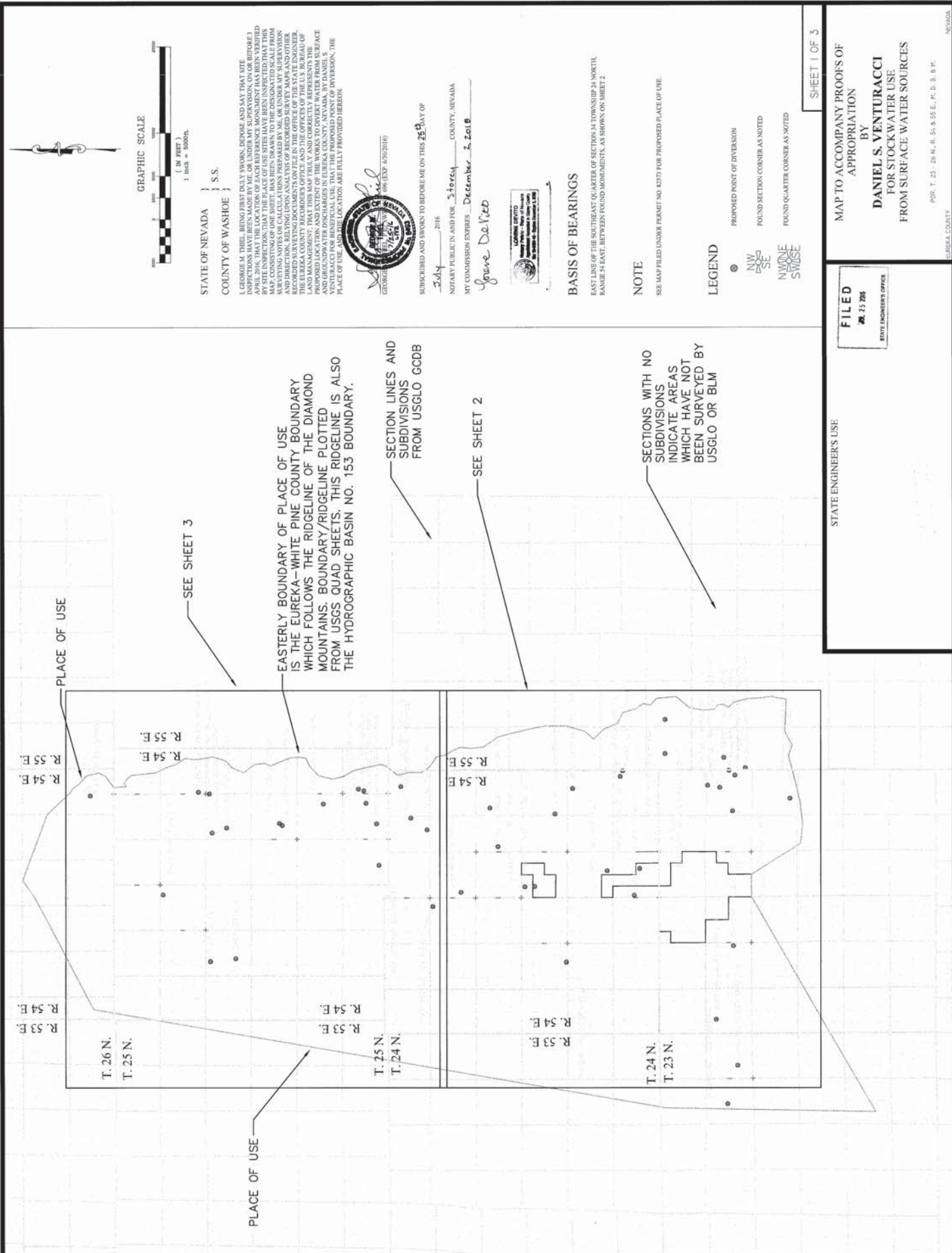
BY
DANIEL S. VENTURACCI
 FOR STOCK WATER USE
 FROM SURFACE WATER SOURCES

POST T. 25 - 29 N., R. 54 & 55 E., M. D. B. & P.
 LUPA COUNTY, NEVADA

V11019
 V11018
 V11017
 V11016

V11015 V11014 V11012 V11011 V11010 V11009 V11008 V11007 V11006 V11005 V11004 V11003 V11000 V10999 V10974

V11019
V11018
V11017
V11016
V11015
V11014
V11013
V11012
V11011
V11010
V11009
V11008
V11007
V11006
V11005
V11004
V11003
V11002
V11001
V11000
V10999
V10998
V10997
V10996
V10995
V10994
V10993
V10992
V10991
V10990
V10989
V10988



GRAPHIC SCALE
 1 inch = 500ft.
 STATE OF NEVADA }
 COUNTY OF WASHOE } S.S.

GEORGE S. SWITSE, THE BEING FIRST DULY SWORN BEFORE AND ASY THAT THE INSTRUMENTS THAT HAVE BEEN FILED WITH ME IN WASHINGTON COUNTY, NEVADA, BEFORE APRIL 2016, THAT THE LOCATION OF EACH REFERENCE MONUMENT HAS BEEN VERIFIED BY SITE INSPECTION; THAT THE PLACE OF USE SITES HAVE BEEN INSPECTED THAT THIS MONUMENT IS CORRECTLY LOCATED AND THAT THE MONUMENT IS CORRECTLY PLACED; AND DIRECTION, RELYING UPON ANALYSIS OF RECORDED SURVEY MAPS AND OTHER RECORDS, THAT THIS MAP TRULY AND CORRECTLY REPRESENTS THE PROPOSED LOCATION AND EXTENT OF THE WORKS TO DIVERT WATER FROM SURFACE WATER SOURCES FOR BENEFICIAL USE; THAT THE PROPOSED POINT OF DIVERSION, THE PLACE OF USE, AND THE LOCATION ARE FULLY PROVIDED HEREON.



SUBSCRIBED AND SWORN TO BEFORE ME ON THIS 25th DAY OF MAY, 2016
 NOTARY PUBLIC IN AND FOR Storey COUNTY, NEVADA
 My Commission Expires December 31, 2018
 Gene DeVito



BASIS OF BEARINGS

EAST LINE OF THE SOUTHEAST QUARTER OF SECTION 14 TOWNSHIP 24 NORTH, RANGE 54 EAST, BETWEEN FOUND MONUMENTS, AS SHOWN ON SHEET 2.

NOTE

SEE MAP FILED UNDER PERMIT NO. 82573 FOR PROPOSED PLACE OF USE.

LEGEND

- PROPOSED POINT OF DIVERSION
- FOUND SECTION CORNER AS NOTED
- FOUND QUARTER CORNER AS NOTED

SHEET 1 OF 3

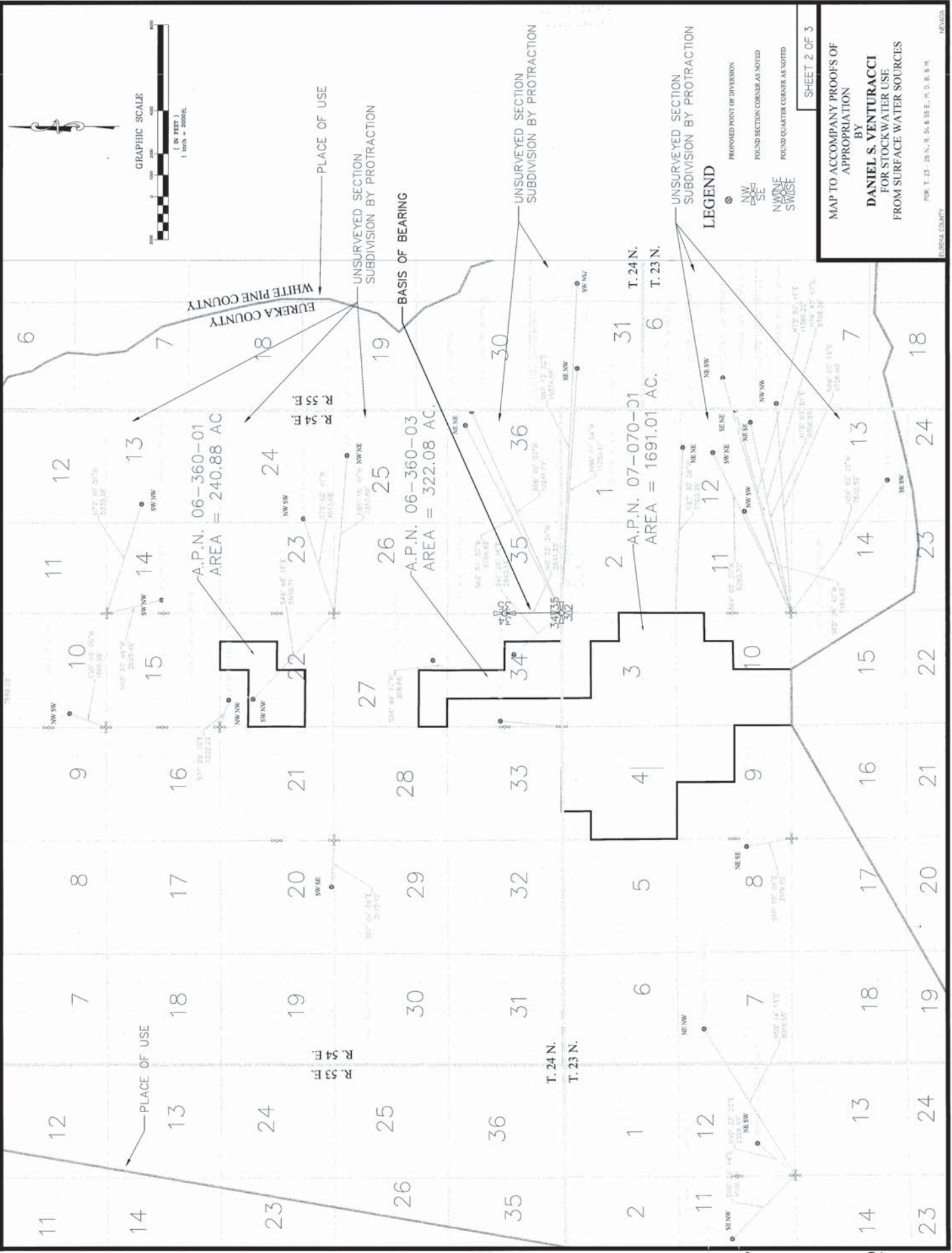
MAP TO ACCOMPANY PROOFS OF APPROPRIATION
 BY
DANIEL S. VENTURACCI
 FOR STOCK WATER USE
 FROM SURFACE WATER SOURCES

POS. T. 23 N., R. 54 & 55 E., P. 0, B. 8
 NEVADA
 EUREKA COUNTY

FILED
 APR 23 2016
 STATE ENGINEER'S OFFICE

STATE ENGINEER'S USE

V10987 V10986 V10985 V10984 V10983 V10982 V10981 V10978 V10977 V10976 V10975 V10974



- V11002
- V11001
- V10998
- V10997
- V10996
- V10995
- V10994
- V10993
- V10992
- V10991
- V10990
- V10989

V10988 V10987 V10986 V10985 V10984 V10983 V10982 V10981 V10980 V10979 V10978 V10977 V10976 V10975 V10974