

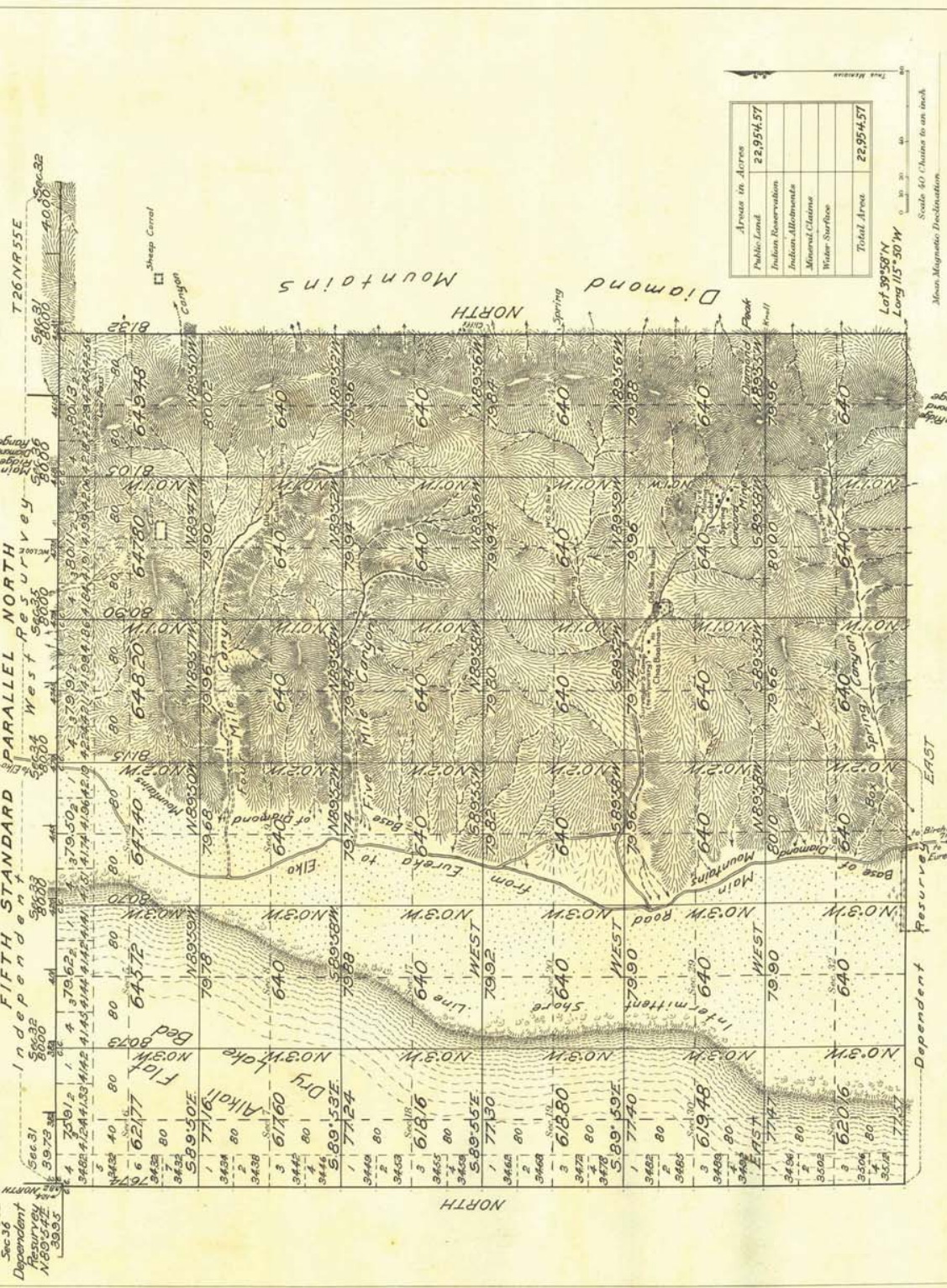
VENT_183

VENT_183

Accepted November 1, 1923

See plat of T. 20 N. R. 54 E. & M. 5 for closing distances
of runs 3, 4 & 5. (4-6754)

Township No. 25 North Range No. 54 East Mt Diablo Meridian, Nevada.



Areas in Acres	
Public Land	22,954.57
Indian Reservation	
Indian Allotments	
Mineral Claims	
Water Surface	
Total Area	22,954.57

Lot 39 58' N
Long 115° 30' W
Scale 40 Chains to an inch
Mean Magnetic Declination

The above map of Township No. 25 North, Range No. 54 East, of the Mount Diablo Base & Meridian, Nevada, is strictly conformable to the field notes of the survey thereof on file in this office, which have been examined and approved.
U. S. Surveyor General's Office.
Reno, Nevada, June 14, 1923.
Surveyor General.

Surveyor Designated	By Whom Surveyed	No.	Group Date	Amount of Survey	When Surveyed
5th, 6th, 7th, 8th, 9th, 10th, 11th, 12th, 13th, 14th, 15th, 16th, 17th, 18th, 19th, 20th, 21st, 22nd, 23rd, 24th, 25th, 26th, 27th, 28th, 29th, 30th, 31st, 32nd, 33rd, 34th, 35th, 36th, 37th, 38th, 39th, 40th, 41st, 42nd, 43rd, 44th, 45th, 46th, 47th, 48th, 49th, 50th, 51st, 52nd, 53rd, 54th, 55th, 56th, 57th, 58th, 59th, 60th, 61st, 62nd, 63rd, 64th, 65th, 66th, 67th, 68th, 69th, 70th, 71st, 72nd, 73rd, 74th, 75th, 76th, 77th, 78th, 79th, 80th, 81st, 82nd, 83rd, 84th, 85th, 86th, 87th, 88th, 89th, 90th, 91st, 92nd, 93rd, 94th, 95th, 96th, 97th, 98th, 99th, 100th	Chas. F. Moore	94	June 9, 1921	0 39 95	Nov 23, 1921
South Bay Dep. Reservoir	US Trans/Man	2	71 73	Nov 23, 1921	Dec. 14, 1921
East "	Survey	3	0 0	Nov 10, 1921	Dec. 15, 1921
West "	"	6	1 32	Nov 15, 1921	Nov 16, 1921
Subdivisions "	"	6	0 56	Nov 19, 1921	Nov 23, 1921
		59	68 18	Nov 26, 1921	Dec. 10, 1921

T. 25 N. R. 54 E.

185