

VENT_187

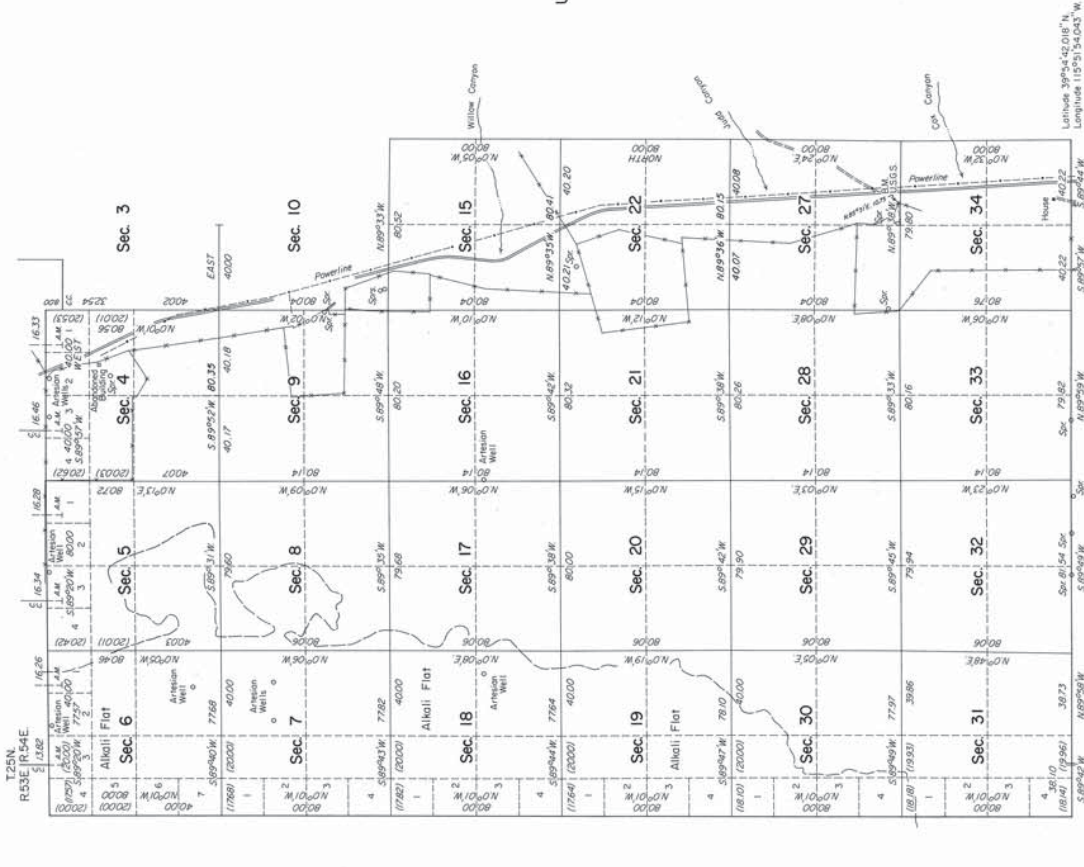
VENT_187

ORIGINAL

TOWNSHIP 24 NORTH, RANGE 54 EAST, OF THE MOUNT DIABLO MERIDIAN, NEVADA

DEPENDENT RESURVEY

Sec. 31 Sec. 32 Sec. 33



A history of surveys is contained in the field notes. A dependent resurvey of a portion of the south boundary was executed under T. 23 N., R. 54 E., of this Group. This plat represents a dependent resurvey of the west boundary, a portion of the north boundary, and a portion of the subdivisional lines of T. 24 N., R. 54 E., designed to restore the corners in their true original locations according to the best available evidence. Lottings and areas are as shown on the plat approved November 4, 1879. Survey executed by James R. Munson and Duane R. Garoutte, Cadastral Surveyors, September 21, 1973 to November 12, 1974, under Special Instructions dated September 12, 1973, and Supplemental Special Instructions dated September 9, 1974 for Group No. 504, Nevada.

UNITED STATES DEPARTMENT OF THE INTERIOR
BUREAU OF LAND MANAGEMENT
Washington, D. C.
December 10, 1975

This plat is strictly conformable to the approved field notes and is hereby accepted in accordance with the requirements of law and the regulations of this Bureau, as hereby accepted.

For the Director

Bernard W. Johnson
Chief, Division of Cadastral Survey

UNSURVEYED

Latitude 39°54'42.018" N
Longitude 115°51'34.045" W



Mean Magnetic Declination
17° E