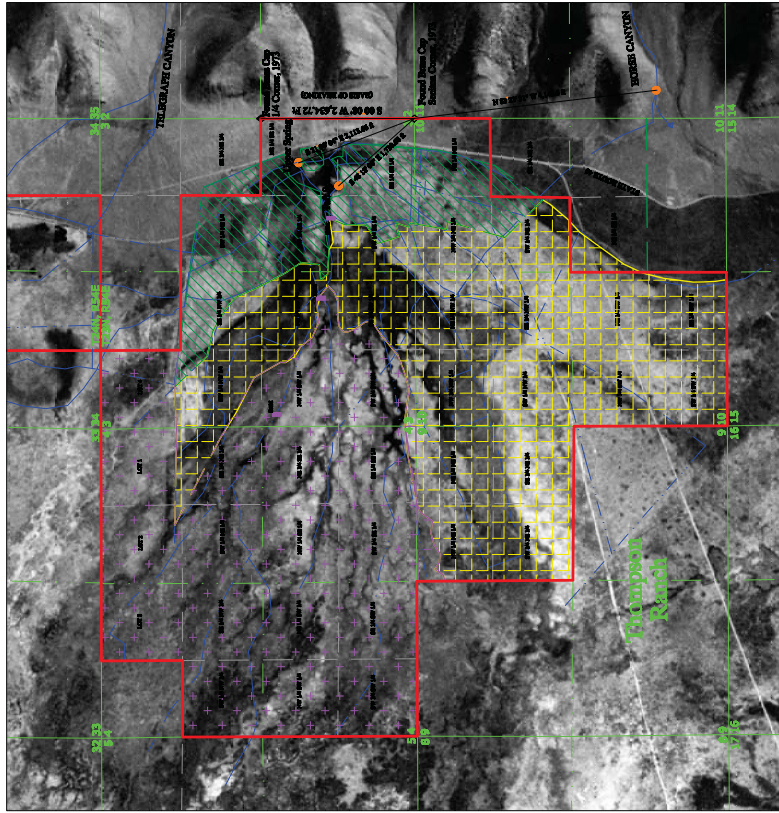


**VENT\_201**

**VENT\_201**



**PORTIONS OF SECTIONS 3, 4, 9, & 10, T.23N., R.54E., M.D.B.&M.**

**BASIS OF BEARINGS**

THE EAST LINE OF THE SW QUARTER OF SECTION 3, T.23N., R.54E., M.D.B.&M. BEARING S. 00°08'E., A DISTANCE OF 2,634.72 FT FEET AS SHOWN ON THAT CERTAIN RECORD OF SURVEY MAP CONSISTING OF A SERIES OF SURVEY MAPS AND CORRECTED SURVEYING DOCUMENTS ACCEPTED BY THE UNITED STATES DEPARTMENT OF THE INTERIOR BUREAU OF LAND MANAGEMENT ON DECEMBER 10, 1975.

**LEGEND**

- DIVERSIFIED PASTURE
- HAY
- GRAIN/ALFALFA
- POINT OF DIVERSION
- CANYONS, DITCHES, SPRING DISCHARGE
- PARCEL BOUNDARY
- FOUND SECTION CORNER AS NOTED
- FOUND QUARTER CORNER AS NOTED



SECTION	SUBDIVISION	CULTURE TABLE		TOTAL ACRES
		TRANSVERSE RANGE	LONGITUDE PASTURE	
3	LOT 4	1.23N., R.54E.	38.67	41.03
3	SW/4 NW/4	1.23N., R.54E.	6.85	33.53
3	SW/4 NE/4	1.23N., R.54E.	18.74	32.53
3	SE/4 NE/4	1.23N., R.54E.	7.79	32.53
3	SE/4 SW/4	1.23N., R.54E.	36.45	40.00
3	NE/4 SW/4	1.23N., R.54E.	26.30	40.00
3	SW/4 SW/4	1.23N., R.54E.	34.21	40.00
3	NE/4 SW/4	1.23N., R.54E.	7.76	40.00
3	NW/4 SW/4	1.23N., R.54E.	34.79	40.00
3	SE/4 SW/4	1.23N., R.54E.	22.10	12.66
3	NE/4 SW/4	1.23N., R.54E.	17.90	12.66
3	SE/4 SW/4	1.23N., R.54E.	24.44	24.44
3	NE/4 SW/4	1.23N., R.54E.	40.43	40.43
4	LOT 2	1.23N., R.54E.	0.50	40.95
4	LOT 3	1.23N., R.54E.	40.87	40.87
4	SW/4 NW/4	1.23N., R.54E.	40.00	40.00
4	SW/4 NE/4	1.23N., R.54E.	40.00	40.00
4	SE/4 NE/4	1.23N., R.54E.	0.68	40.00
4	SE/4 SW/4	1.23N., R.54E.	38.73	40.00
4	NW/4 SW/4	1.23N., R.54E.	40.00	40.00
4	NE/4 SW/4	1.23N., R.54E.	40.00	40.00
4	SW/4 SW/4	1.23N., R.54E.	40.00	40.00
4	SE/4 SW/4	1.23N., R.54E.	40.00	40.00
4	NE/4 SW/4	1.23N., R.54E.	40.00	40.00
4	SE/4 SW/4	1.23N., R.54E.	40.00	40.00
4	NE/4 SW/4	1.23N., R.54E.	40.00	40.00
4	SE/4 SW/4	1.23N., R.54E.	40.00	40.00
9	NW/4 NE/4	1.23N., R.54E.	37.49	2.51
9	NE/4 NE/4	1.23N., R.54E.	31.74	40.00
9	SE/4 NE/4	1.23N., R.54E.	40.00	40.00
9	SW/4 NE/4	1.23N., R.54E.	40.00	40.00
10	NW/4 NW/4	1.23N., R.54E.	40.00	40.00
10	NE/4 NW/4	1.23N., R.54E.	40.00	40.00
10	SE/4 NW/4	1.23N., R.54E.	40.00	40.00
10	SW/4 NW/4	1.23N., R.54E.	17.74	40.00
10	NW/4 NE/4	1.23N., R.54E.	38.26	40.00
10	NE/4 NE/4	1.23N., R.54E.	24.18	15.82
10	SE/4 NE/4	1.23N., R.54E.	20.12	20.12
10	SW/4 NE/4	1.23N., R.54E.	27.84	10.52
10	NE/4 SW/4	1.23N., R.54E.	40.00	38.36
10	SE/4 SW/4	1.23N., R.54E.	40.00	6.06
10	NW/4 SW/4	1.23N., R.54E.	40.00	40.00
10	NE/4 SW/4	1.23N., R.54E.	40.00	40.00
10	SE/4 SW/4	1.23N., R.54E.	40.00	40.00
10	NW/4 SW/4	1.23N., R.54E.	40.00	40.00
10	NE/4 SW/4	1.23N., R.54E.	40.00	40.00
10	SE/4 SW/4	1.23N., R.54E.	13.03	13.03

TOTAL CULTIVATED ACREAGE 1,636.36 ACRES

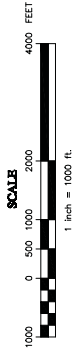
**STATE OF NEVADA  
COUNTY OF WASHOE**

I, GEORGE M. THIEL, BEING FIRST DULY SWORN, DEPOSE AND SAY THAT SITE INSPECTIONS HAVE BEEN MADE BY ME, OR UNDER MY SUPERVISION AND DIRECTION, ON OR BEFORE FEBRUARY 13, 2013, THAT THE LOCATION OF EACH REFERENCE MONUMENT HAS BEEN VERIFIED BY SITE INSPECTION, THAT THE PLACE OF THESE SITES HAVE BEEN INSPECTED, THAT THIS MAP CONSISTING OF UNDER SHEET, MAP NO. \_\_\_\_\_, HAS BEEN CORRECTED AND RECORDED IN ACCORDANCE WITH THE PROVISIONS OF CHAPTER 204, NRS, AND THE SUPERVISION AND DIRECTION, RELYING UPON ANALYSIS OF RECORDED SURVEY MAPS AND OTHER RECORDED SURVEYING DOCUMENTS ON FILE IN THE OFFICE OF THE STATE ENGINEER, AND THE EUREKA COUNTY RECORDER'S OFFICE AS VERIFIED BY AERIAL PHOTOGRAPHS, AERIAL HISTORIES, AND OTHER DOCUMENTS, THAT THIS MAPRULLY AND CORRECTED REPRESENTS THE LOCATION AND LOCATION AND NAMES OF ALL WORKS WHICH WILL CROSS OR CONNECT WITH THE PROPOSED WORKS, AND THE BOUNDARY OF ALL LANDS, SHOWN BY 40-ACRE SUBDIVISIONS THE AREAS PROPOSED TO BE SERVED, ARE FULLY AND CORRECTLY DESIGNATED THEREON.

SUBSCRIBED AND SWORN TO BEFORE ME  
THIS \_\_\_\_\_ DAY OF \_\_\_\_\_

NOTARY PUBLIC IN AND FOR \_\_\_\_\_ COUNTY, \_\_\_\_\_  
MY COMMISSION EXPIRES \_\_\_\_\_

GEORGE M. THIEL, SMS # 8493



FEBRUARY 13, 2013 Sheet 2 of

MAP TO ACCOMPANY  
PROOF OF APPROPRIATION  
BY  
DANIEL S. VENTURACCI  
FOR  
IRRIGATION, STOCKWATER, & DOMESTIC USE  
FROM HORSE CANYON AND SPRINGS  
EUREKA COUNTY NEVADA

**STATE ENGINEER'S USE**