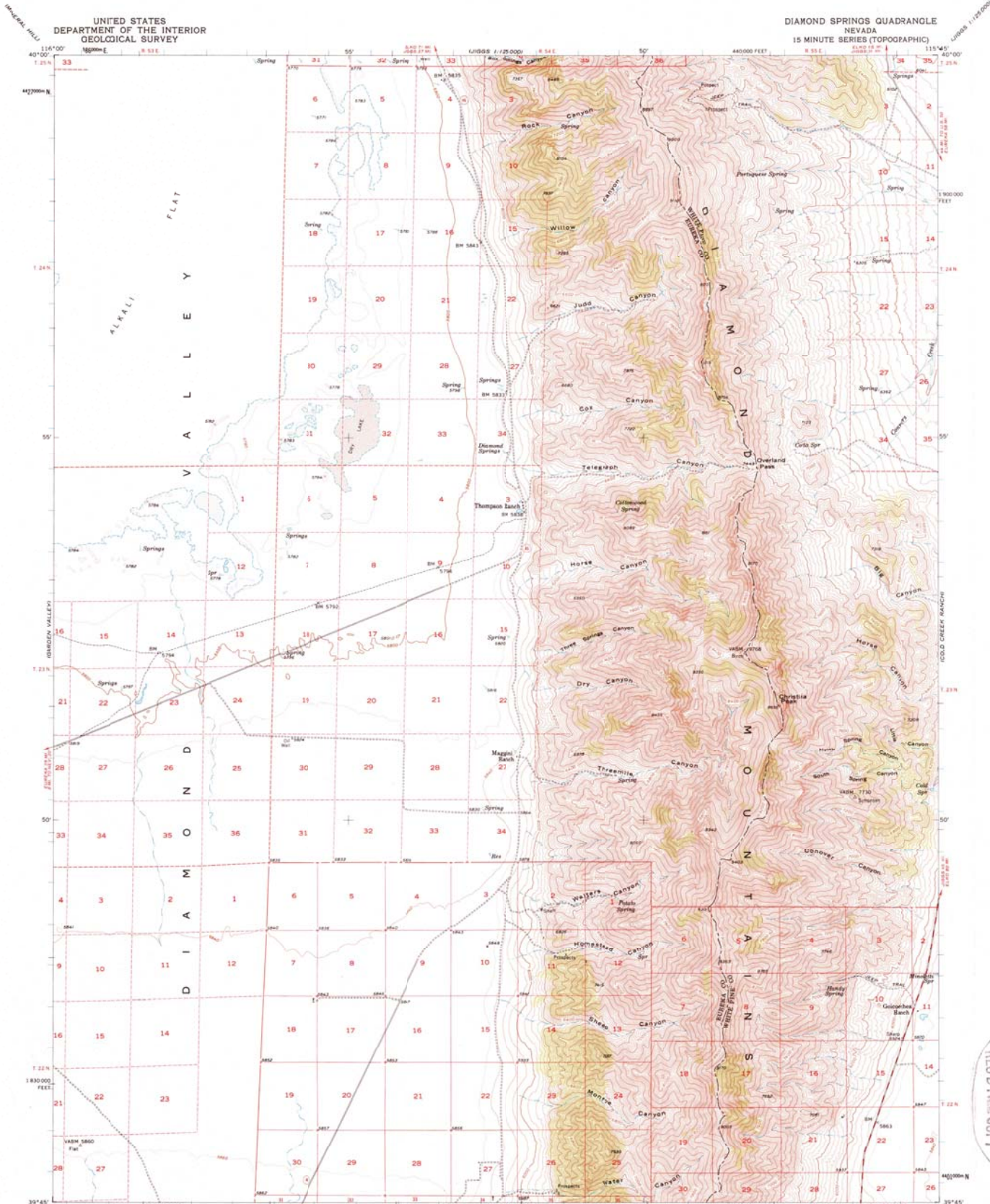


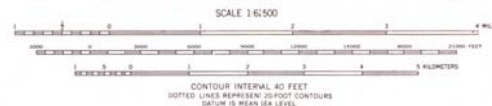
VENT_235

VENT_235



USGS METEOROLOGICAL DATA
APR 13 1989
REC'D FILE COPY

Maped, edited, and published by the Geological Survey
Control by USGS and USACGS
Topography from aerial photographs by Keith plotter
and by photostereoscopic method. Aerial photographs taken 1954.
Polyconic projection, 1927 North American datum
10,000-foot grid based on Nevada coordinate system, east zone
1800-meter Universal Transverse Mercator grid ticks,
zone 11, shown in blue.
Dashed land lines indicate approximate locations.



ROAD CLASSIFICATION
Medium-duty Light-duty
Unimproved art
State Route

DIAMOND SPRINGS, NEV.
N3945-W11541-15
1957

THIS MAP COMPLIES WITH NATIONAL MAP ACCURACY STANDARDS
FOR SALE BY U.S. GEOLOGICAL SURVEY, DENVER, COLORADO 80225, OR RESTON, VIRGINIA 22092
A FOLDER DESCRIBING TOPOGRAPHIC MAPS AND SYMBOLS IS AVAILABLE ON REQUEST