

VENT_257

VENT_257

Ground Truthing

May 2013

Thompson Ranch



Overview from 1982



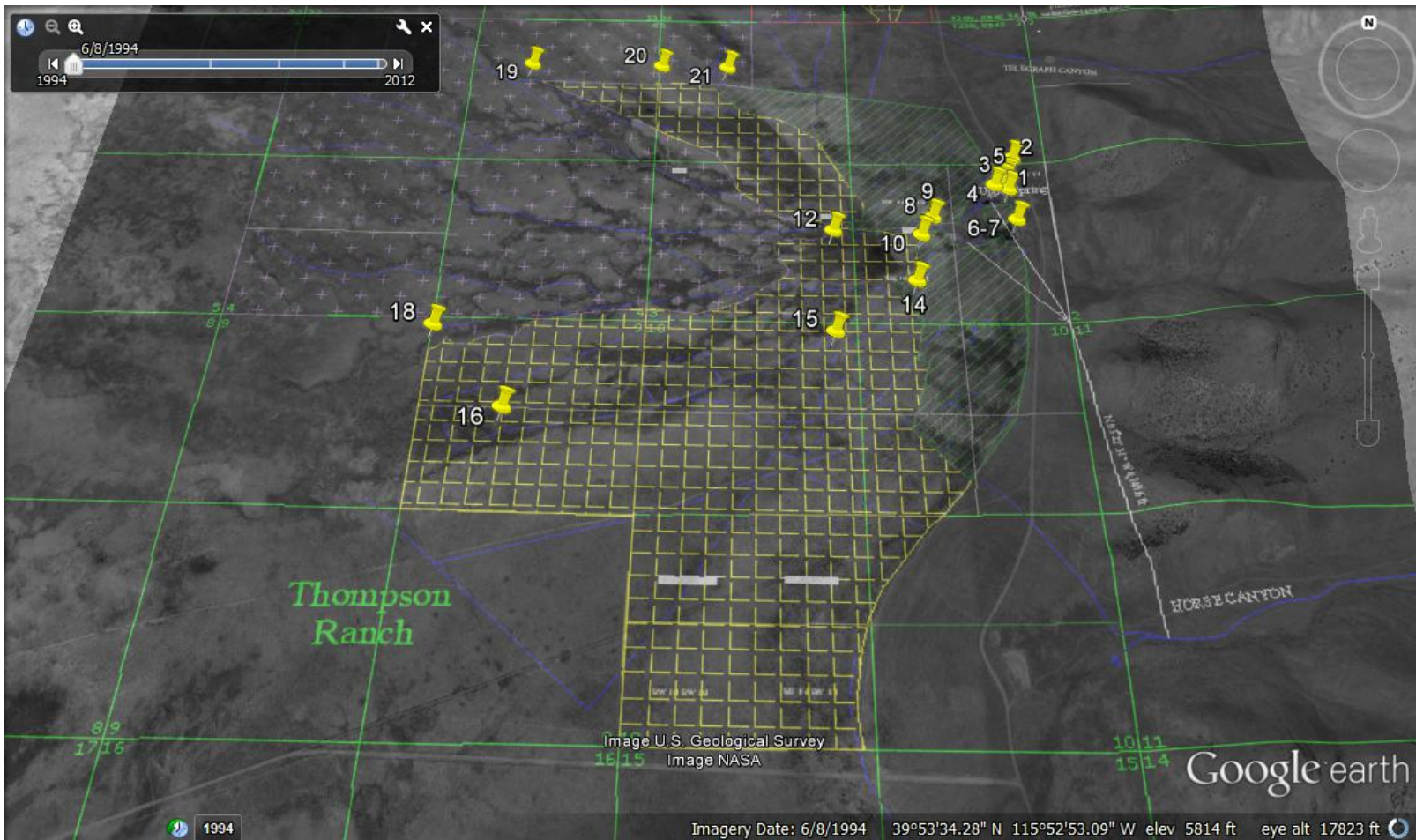
1982



Overview from 2013



Thompson Ranch



GPS Point List

Thompson Ranch GPS Points and Pictures from Ground Truthing							
Number	Description	Elevation	Long			Lat	
1	Upper Spring Area	5821	39	54	7.4	115	52 6.4
2	Upper Ditch	5845	39	54	12.4	115	52 5.2
3	Upper Spring Area		39	54	9.5	115	52 6.4
4	Check Dam area of Upper Spring	5830	39	54	8.1	115	52 8.6
5	Upper Spring Area and bottom of upper pond/reservoir	5832	39	54	8.6	115	52 7.2
6	Taft Springs Area and bottom of lower pond/reservoir						
7	Intersecting Sheer Zone	5830	39	54	2.4	115	52 5.7
8	Original Ditch by gate	5825	39	54	2.5	115	52 19.3
9	Parshall Flume in Deep Ditch	5822	39	53	59.9	115	52 19.5
10	Down Original Ditch, past Deep Ditch	5826	39	53	59.7	115	52 21.3
12	Evidence Large phreatophitic plant area, Edge of Historic Hay cultivation area	5826	39	54	0.3	115	52 35.4
14	Stackyard w/ historic bailer press wheel and parts in hay area	5830	39	53	52.6	115	52 22.6
15	Hay Storage Area, off Original Ditch	5819	39	53	45.1	115	52 35.6
16	Original Ditch, western area of hayed fields	5810	39	53	33.9	115	53 25
18	West Levy, where spring discharges to public land, end of South Hayed fields	5807	39	53	45.1	115	53 37.1
19	Natural Channel Discharge to North pasture, West end of North Hay field Pictures of historic fenceline used to keep livestock out of hay area (between 18 and 19)	5800	39	54	28.6	115	53 27.3
20	Hay Storage Area	5806	39	54	28.5	115	53 4.5
21	North End Discharge Area of Old Ditch	5811	39	54	28.4	115	52 52.9
22	Point on Cox & Thompson edge where High ditch discharged to Cox (no pictures)	5815	39	54	26.9	115	52 36.5
23	Pictures old rake & farm eqpt. Stored between Cox and Home Ranch						

Points 1-5

Upper Spring Pond Area



From Point 3: Pictures of Reservoir



From Point 4: Pictures of Reservoir and Check Dam



From Point 5: Looking Southerly



HISTORIC PHOTOS OF SAME LOCATION

1946



1967



1961



1982



1992



2013



Points 6-7: Taft Springs Area - Lower Reservoir



Point 6: Dug Out Spring 1



Point 6: Dug Out Spring 1



Point 6: Spring 2



Point 6: Springs 3 & 4



Point 6: Domestic Springbox (dry)



Point 7: Observed Geology



Point7: Southeast Trending Exposed Bedrock



Point 7: Spring 5 and Exposed Bedrock



Point 7: Uphill from Spring



Points 6-7: East of the Springs



Point 6-7: Looking South



HISTORIC PHOTOS FROM SAME AREA

1971



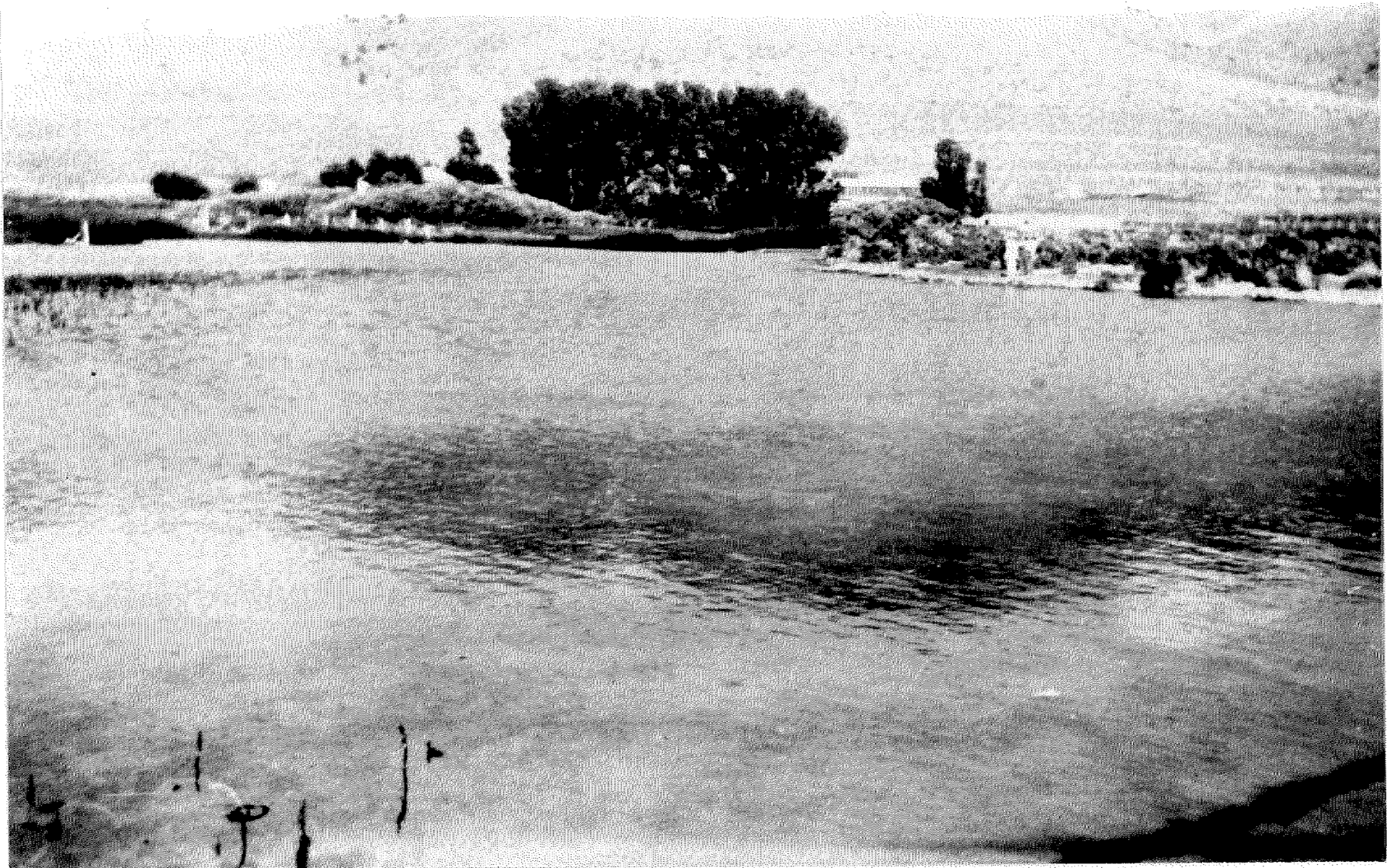
1982



1992



1920



2013



1971



1992



1971



Points 8-10



Point 8: South Diversion, Old Original Ditch



Point 8: Original Ditch

2013



August 1982



Point 8-9: Check Dam and Ditch



Point 10: Deep Ditch



Point 10: Parshall Flume 2013



Point 9: Parshall Flume- off Deep Ditch

1983



1992



1992



Point 10 area: Land Cracking



Points 11-18



Between 10 and 12



Point 12:



Point 12: Edge of Hay Area



Point 12: Edge of Hay Area



Point 12: Edge of Hay Area



Point 14: Ditch Remnants



Point 14: Bailer Press



Point 14: Bailer Press



Point 14: Bailer Press



Point 14: Bailer Press



Point 15: Haystack Area



Point 16: Western Area Hay Fields



Point 16: Ditch Remnants



Point 16: Peat



HISTORIC PICTURES AROUND SAME AREA

1983



2013



Between Points 16 and 18



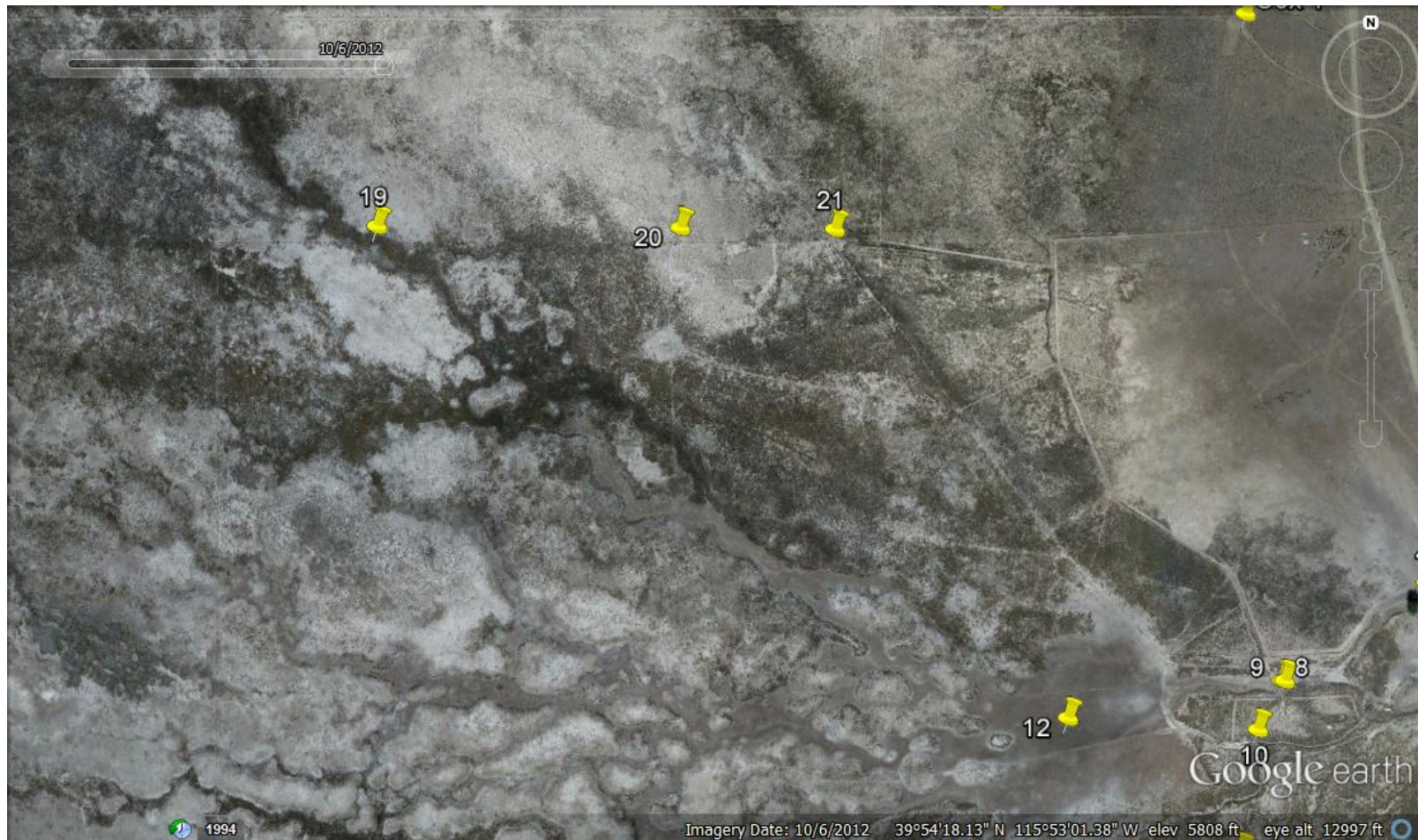
Between Points 16 and 18



Point 18: West Levy Area



Points 19-21



Points 18-21: Historic Fences



Point 20: Hay Storage Area



Point 21: North Field, and Ditch Remnants



Point 21: Old Ditch to North



Old Farm Equipment



Old Farm Equipment



Cox Ranch



1968



1982



1991



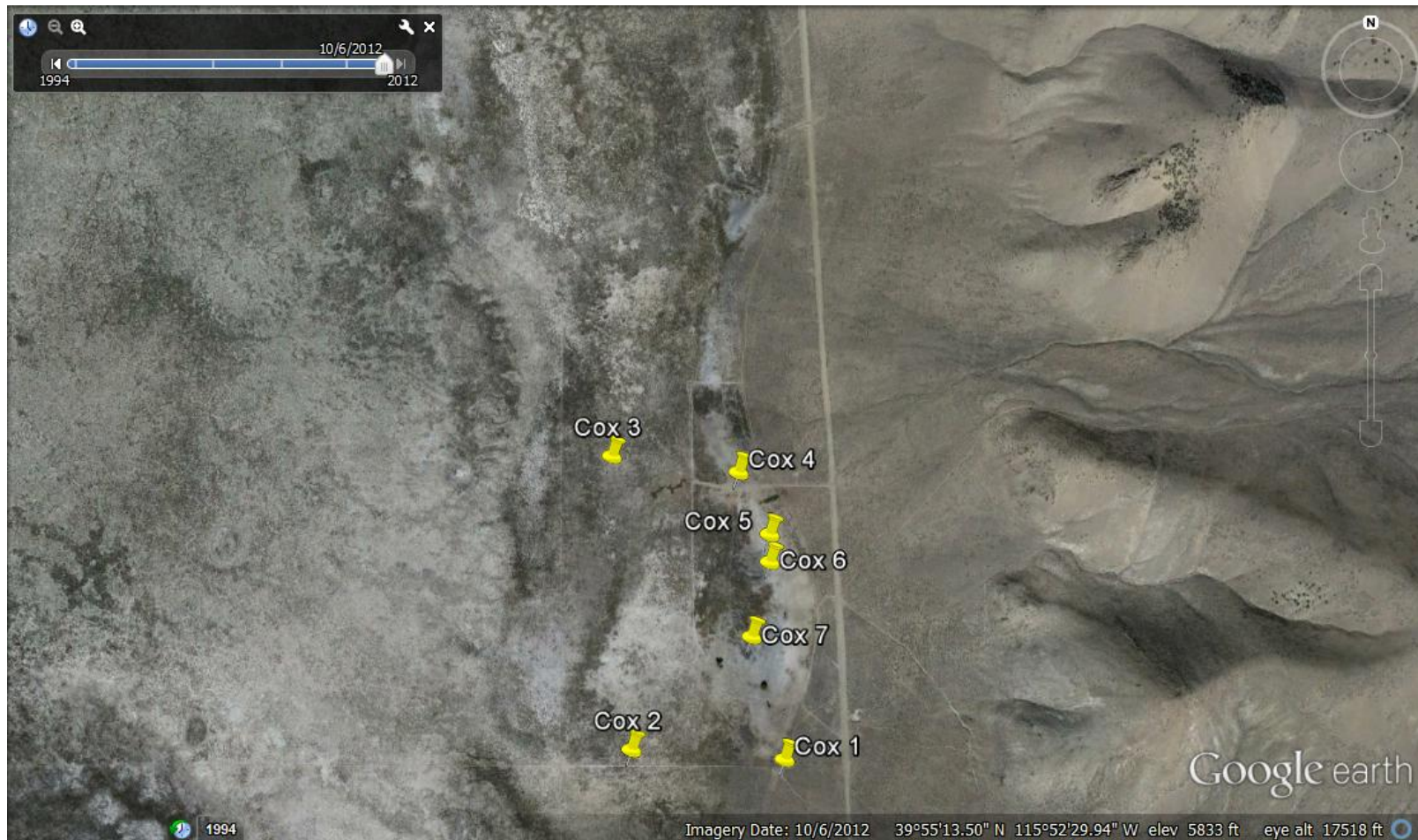
2013



2013



Points 1-7



GPS of Points

1 High Ditch onto Cox	5841	39	54	40.7	115	52	22.3
2 1870s Ditch	5813	39	54	41.5	115	52	41
3 1870s Ditch in middle of Cox	5813	39	55	9	115	52	43.4
5 Discharge Area Springs	5822	39	55	1.7	115	52	24.1
6 Spring 2	5819	39	54	59.1	115	52	24.1
7 Spring Complex Area south	5819	39	54	52.1	115	52	26.3

Point 1: High Ditch from Thompson to Cox



Point 2: 1870s Ditch from Thompson to Cox



Point 3: 1870s Ditch



Point 5: Old Spring Discharge Area



Point 6: Spring Discharge Area 2



1968



2013



1968



Point 7: Spring Discharge Area 3



Willow- North



Willow – Spring Area 1

