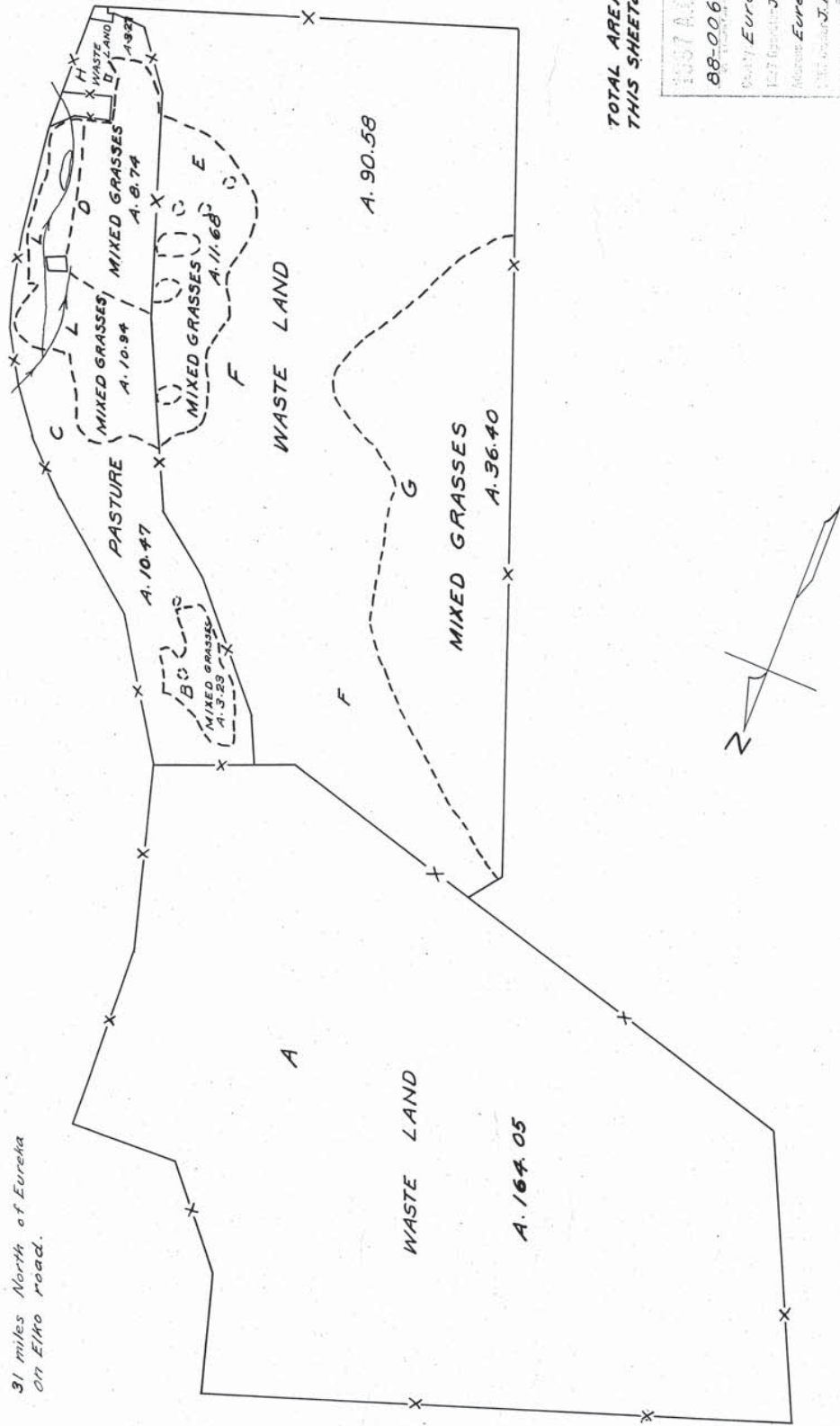


VENT_282

VENT_282

Sheet 1 of 2.

3.1 miles North of Eureka
on Elko road.



TOTAL AREA MAPPED
THIS SHEET

1957 A.D.D., Nevada
88-006
County Eureka
Surveyor J. P. Jacobsen
Address Eureka, Nevada
J. P. Jacobsen
Eureka, Nevada
Scale 1 inch = 400 Feet
Surveyed by J. J. Janssen, 7-28-57
Traced by C. E. H. - 10/28/80
Adjusted by J. A. R. - 10/28/80
Checked by G. E. S. - 11-25-80

Waste Land = 257.9 acres
Mixed Grasses = 70.99 acres
Pasture = 10.47
Sum in Cultivation = 81.46 acres