

STATE OF NEVADA }  
 COUNTY OF CLARK } S.S.

I, ROBERT COACHE, P.E., BEING FIRST DULY SWORN, DEPOSE AND SAY THAT THIS MAP CONSISTING OF ONE SHEET, HAS BEEN CORRECTLY DRAWN TO THE DESIGNATED SCALE BASED ON INFORMATION OBTAINED FROM THE U.S. BUREAU OF LAND MANAGEMENT AND FIELD NOTES OF A SURVEY MADE BY ME, OR UNDER MY SUPERVISION OR DIRECTION ON OR BEFORE THE 2ND DAY OF SEPTEMBER 2015, THAT IT TRULY AND CORRECTLY REPRESENTS THE LOCATION AND EXTENT OF THE WORKS USED TO DIVERT WATER FROM SURFACE WATER SOURCES FOR STOCK WATER AND DOMESTIC PURPOSES (PALMER RANCH SPRING) FOR STOCK WATER PURPOSES (LOWER TORRE SPRING, MIDDLE TORRE SPRING, UPPER TORRE SW SPRING AND UPPER TORRE SE SPRING) IN EUREKA COUNTY, NEVADA BY ROBERT F. BECK AND KAREN A. BECK, TRUSTEES OF THE BECK FAMILY TRUST DATED APRIL 19, 2005, THAT THE POINTS OF DIVERSION AND PLACES OF USE ARE FULLY AND CORRECTLY DESIGNATED HEREON.

*Robert Coache*  
 ROBERT COACHE, P.E.  
 STATE WATER RIGHT SURVEYOR  
 CERTIFICATE No. 1005



SUBSCRIBED AND SWORN TO BEFORE ME THIS 20<sup>th</sup> DAY OF DECEMBER 2015

By *Tracy A. Meter*  
 FOR SAID COUNTY AND STATE  
 MY APPOINTMENT EXPIRES July 15, 2019



SECTIONS 21, 22, 23, 25, 26, 27 and 28, TOWNSHIP 20 NORTH, RANGE 54 EAST, M.D.M.

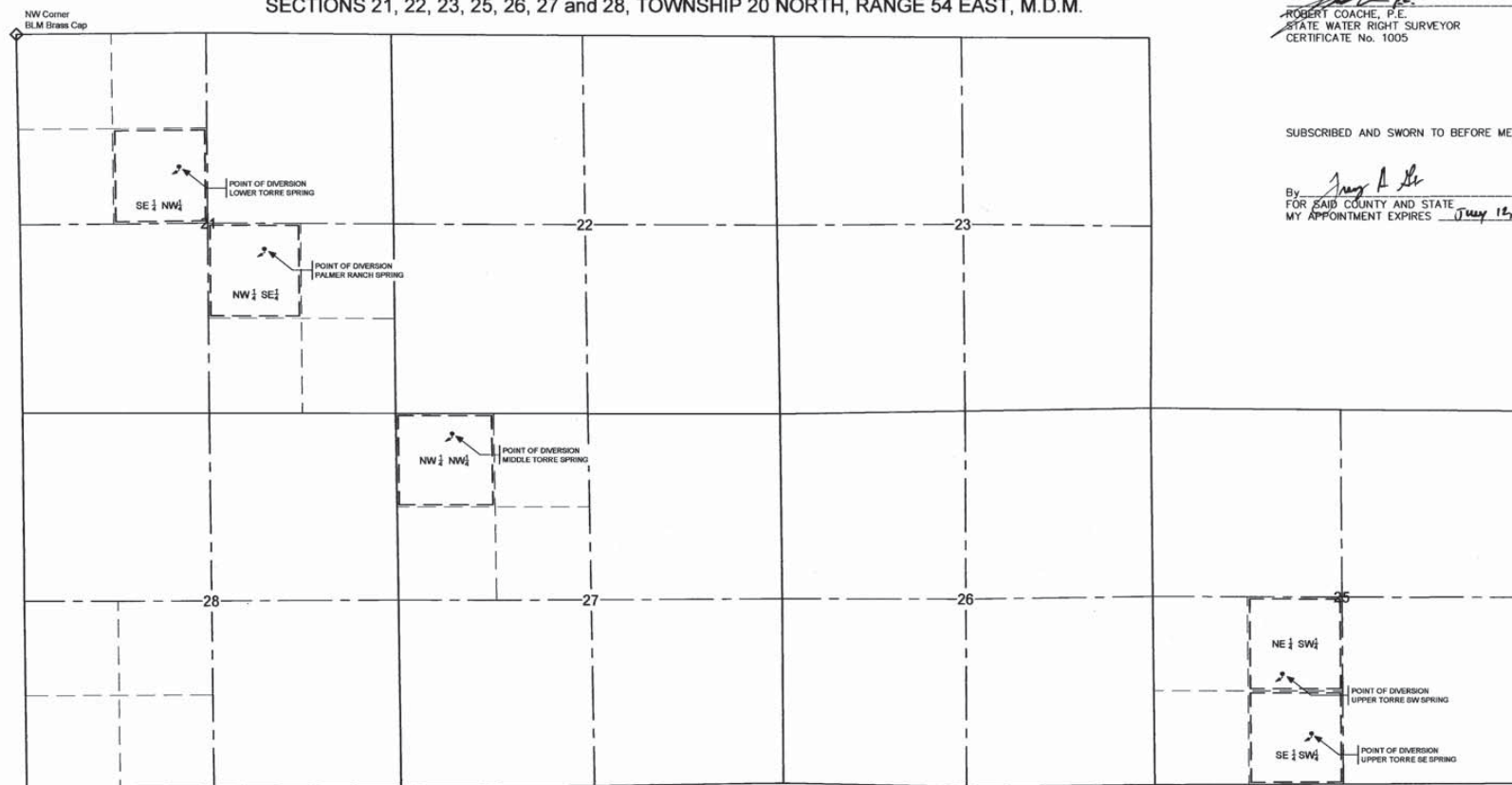
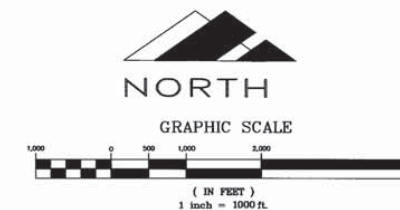


Table No. 1 - Ties for Points of Diversion

Spring	Bearing	Distance
Lower Torre Spring	North 50° 53' 15" West	2,936'
Palmer Ranch Spring	North 49° 06' 01" West	4,597'
Middle Torre Spring	North 47° 31' 36" West	6,285'
Upper Torre SW Spring	North 63° 13' 31" West	19,888'
Upper Torre SE Spring	North 61° 39' 12" West	20,637'

Table No. 2 - Places of Use Legal Description

Spring	Legal Description
Lower Torre Spring	SE 1/4 NW 1/4 Sec 21 T.20N. R54E.
Palmer Ranch Spring	NW 1/4 SE 1/4 Sec 21 T.20N. R54E.
Middle Torre Spring	NW 1/4 NW 1/4 Sec 27 T.20N. R54E.
Upper Torre SW Spring	NE 1/4 SW 1/4 Sec 25 T.20N. R54E.
Upper Torre SE Spring	SE 1/4 SW 1/4 Sec 25 T.20N. R54E.



- LEGEND**
- 1/4 CORNER (OR 1/16 CORNER) FOUND AS SHOWN
  - SECTION CORNER FOUND AS SHOWN
  - POINT OF DIVERSION - SPRING
  - PLACE OF USE
  - SECTION LINE
  - PROJECTED 1/4 SECTION LINE
  - PROJECTED 1/16 SECTION LINE

**BASIS OF BEARING - GPS**  
 THE NW CORNER OF SECTION 21, TOWNSHIP 20 NORTH, RANGE 54 EAST, M.D.M. WAS ESTABLISHED USING A GARMIN eTREX VISTA GPS, SET TO A WAAS ACCURACY OF THREE (3) TO FIVE (5) METERS AND A WGS 84 DATUM

STATE ENGINEER'S USE

*Bearing is tied to the NW corner of section 21, T.20N. R54E. M.D.M. 4/1/15*

1010811 - 1010815

FILED  
 JAN 04 2016  
 STATE ENGINEER'S OFFICE

RECEIVED  
 JAN 04 2016  
 STATE ENGINEER'S OFFICE

**MAP**

TO ACCOMPANY PROOFS OF APPROPRIATION FOR STOCK WATER AND DOMESTIC PURPOSES FROM A SURFACE WATER SOURCE (PALMER RANCH SPRING) FOR STOCK WATER PURPOSES FROM SURFACE WATER SOURCES (LOWER TORRE SPRING, MIDDLE TORRE SPRING, UPPER TORRE SW SPRING AND UPPER TORRE SE SPRING) IN EUREKA COUNTY, NEVADA BY ROBERT F. BECK AND KAREN A. BECK, TRUSTEES OF THE BECK FAMILY TRUST DATED APRIL 19, 2005

V10815 V10814 V10813 V10812 V10811