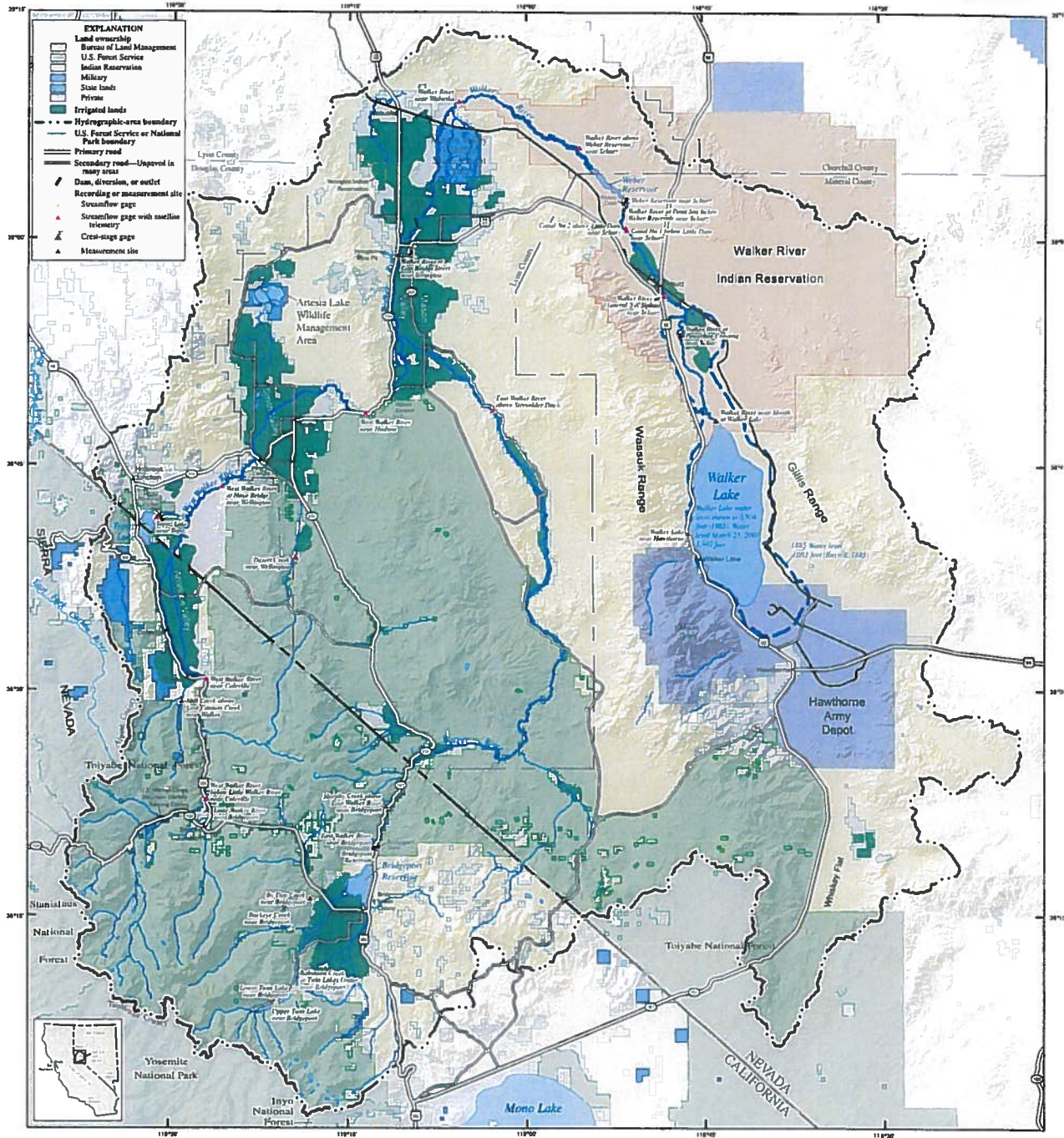


EXHIBIT 1067



Base from U.S. Geological Survey digital data 1:100,000 1979-1985
 Universal Transverse Mercator projection, Zone 11
 Shaded Relief Base from National Elevation Dataset;
 Sun Illumination from northwest at 45 degrees above horizon

Landownership base from Bureau of Land Management, 1998 for Nevada and the California Spatial Information Library, 1998 for California; Walker River Indian Reservation from U.S. Geological Survey 1:85, Hawthorne Army Depot from U.S. Army Corps of Engineers 2002; Irrigated lands from GAP Analysis 1990-1997 and California Department of Water Resources, 2001; Russell, L.C., 1955, Geologic history of Lake Lahontan—A Quaternary Lake in northwestern Nevada; U.S. Geological Survey Monograph 11, 288 p.

SELECTED FEATURES OF THE WALKER RIVER BASIN, CALIFORNIA AND NEVADA
2003