

Table I-7
Detailed Groundwater Budgets Derived Using Excel® Solvers
 (Page 1 of 2)

HA Number	HA Name	Recharge		Groundwater ET		Inflow	Inflow From		Outflow	
				(afy)			(afy)		(afy)	
178B	Butte Valley South	24,688	11,876	0	---	11,812	Stoptoe Valley (HA 179)	1,000	Butte Valley North (HA 178A)	
179	Stoptoe Valley	91,685	101,497	11,812	Butte Valley South (HA 178B)	2,000	Out of model boundary			
---	Goshute Valley Flow System (partial)	116,373	113,373	0	---	3,000	Out of model boundary			
184	Spring Valley	81,339	75,615	0	---	5,724	Hamlin Valley (HA 196)			
185	Tippett Valley	5,616	1,742	0	---	3,874	Out of model boundary			
194	Pleasant Valley	5,388	912	0	---	4,476	Snake (HA 195)			
195	Snake Valley	104,210	129,041	49,226	Hamlin and Pleasant valleys (HAs 196 and 194)	24,395	Out of model boundary			
196	Hamlin Valley	41,358	2,333	5,724	Spring Valley (HA 184)	44,749	Snake (HA 195)			
254	Big Snake	150,956	132,285	5,724	Spring Valley (HA 184)	24,395	Out of model boundary			
---	Great Salt Lake Desert Flow System (partial)	237,911	209,642	0	---	28,270	Out of model boundary			
183	Lake Valley	9,861	6,134	0	---	3,727	Patterson Valley (HA 202)			
198	Dry Valley	1,953	3,709	5,647	Rose Valley (HA 199)	3,891	Panaca Valley (HA 203)			
199	Rose Valley	79	594	6,163	Eagle Valley (HA 200)	5,647	Dry Valley (HA 198)			
200	Eagle Valley	1,465	1,034	5,731	Spring Valley (HA 201)	6,163	Rose Valley (HA 199)			
201	Spring Valley	9,644	3,913	0	---	5,731	Eagle Valley (HA 200)			
202	Patterson Valley	5,656	1,346	3,727	Lake Valley (HA 183)	8,037	Panaca Valley (HA 203)			
203	Panaca Valley	2,381	18,895	21,198	Dry, Patterson, and Clover valleys (HAs 198, 202, and 204)	4,684	Lower Meadow Valley Wash (HA 205)			
204	Clover Valley	15,110	5,840	0	---	9,270	Panaca Valley (HA 203)			
205	Lower Meadow Valley Wash	8,078	9,668	4,684	Panaca Valley (HA 203)	3,095	Muddy River Springs Area and California Wash (HAs 219 and 218)			
---	Meadow Valley Flow System	54,227	51,133	0	---	3,095	Out of MVFS			
171	Coal Valley	4,020	0	23,596	Garden Valley (HA 172)	27,615	Pahroc Valley (HA 208)			
172	Garden Valley	25,292	1,696	0	---	23,596	Coal Valley (HA 171)			
174	Jakes Valley	12,658	858	19,263	Long Valley (HA 175)	31,063	White River Valley (HA 207)			
175	Long Valley	20,496	1,233	0	---	19,263	Jakes Valley (HA 174)			

**Table I-7
Detailed Groundwater Budgets Derived Using Excel® Solvers
(Page 2 of 2)**

HA Number	HA Name	Recharge		Groundwater ET		Inflow		Inflow From		Outflow	
				(afy)				(afy)			
180	Cave Valley	15,044	1,550	0	---	---	13,494	White River and Pahroc valleys (HAs 207 and 208)			
181	Dry Lake Valley	16,208	0	2,000	Pahroc (HA 208)		18,208	Delamar Valley (HA 182)			
182	Delamar Valley	6,627	0	18,208	Dry Lake Valley (HA 181)		24,835	Coyote Spring Valley (HA 210)			
206	Kane Springs Valley	4,329	0	0	---		4,329	Coyote Spring Valley (HA 210)			
207	White River Valley	42,037	76,701	35,063	Jakes and Cave valleys (HAs 174 and 180)		398	Pahroc Valley (HA 208)			
208	Pahroc Valley	4,705	0	37,507	Coal, Cave and White River valleys (HAs 171, 180, and 207)		42,212	Dry Lake and Pahrnagat valleys (HAs 181 and 209)			
209	Pahrnagat Valley	5,726	28,516	40,212	Pahroc (HA 208)		17,423	Coyote Spring Valley (HA 210)			
210	Coyote Spring Valley	2,215	0	53,787	Delamar, Kane Springs, Pahrnagat valleys (HAs 182, 206, and 209), and Tikaboo Valley South (HA 169B)		56,002	Muddy River Springs Area, Hidden and Garnet valleys and California Wash (HAs 219, 216, 217, and 218)			
215	Black Mountains Area	0	1,432	2,000	California Wash (HA 218)		568	Out of model boundary			
216	Garnet Valley	101	0	10,713	Hidden and Coyote Spring valleys (HAs 217 and 210)		10,814	California Wash (HA 218)			
217	Hidden Valley (North)	45	0	5,334	Coyote Spring Valley (HA 210)		5,379	Garnet Valley (HA 216)			
218	California Wash	0	4,505	53,295	Lower Meadow Valley Wash, Garnet Valley, and Muddy River Springs Area (HAs 205, 216, and 219)		48,790	Black Mountains Area (HA 215) and Lower Moapa Valley (HA 220)			
219	Muddy River Springs Area	41	5,989	41,346	Lower Meadow Valley Wash and Coyote Spring Valley (HAs 205 and 210)		35,398	California Wash (HA 218)			
220	Lower Moapa Valley	35	25,311	46,790	California Wash (HA 218)		21,515	Out of model boundary			
---	White River Flow System	159,579	147,791	10,295	Lower Meadow Valley Wash (HA 205) and Tikaboo Valley South (HA 169B)		22,083	Out of model boundary			
---	Total Four Flow Systems	568,090	521,940	7,200	Tikaboo Valley South (HA 169B)		53,352	Out of model boundary			
---	Las Vegas (Partial)	2,843	0	0	---		2,843	Three Lakes Valley			
---	Project Model	570,933	521,940	7,200	Tikaboo Valley South (HA 169B)		56,196	Out of model boundary			

Conceptual Model of Groundwater Flow for the Central Carbonate-Rock Province

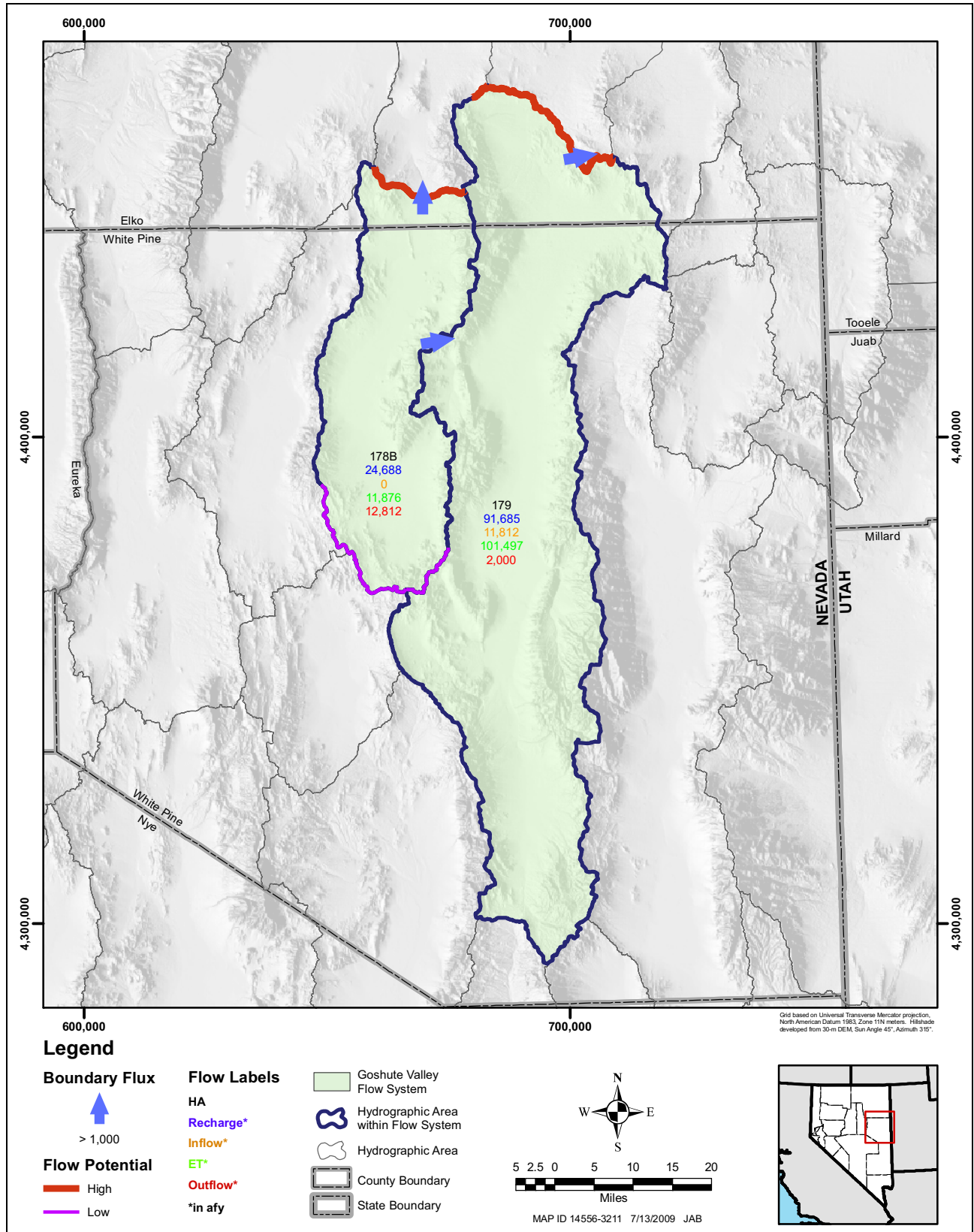


Figure I-1
Regional Groundwater Flow in Goshute Valley Flow System

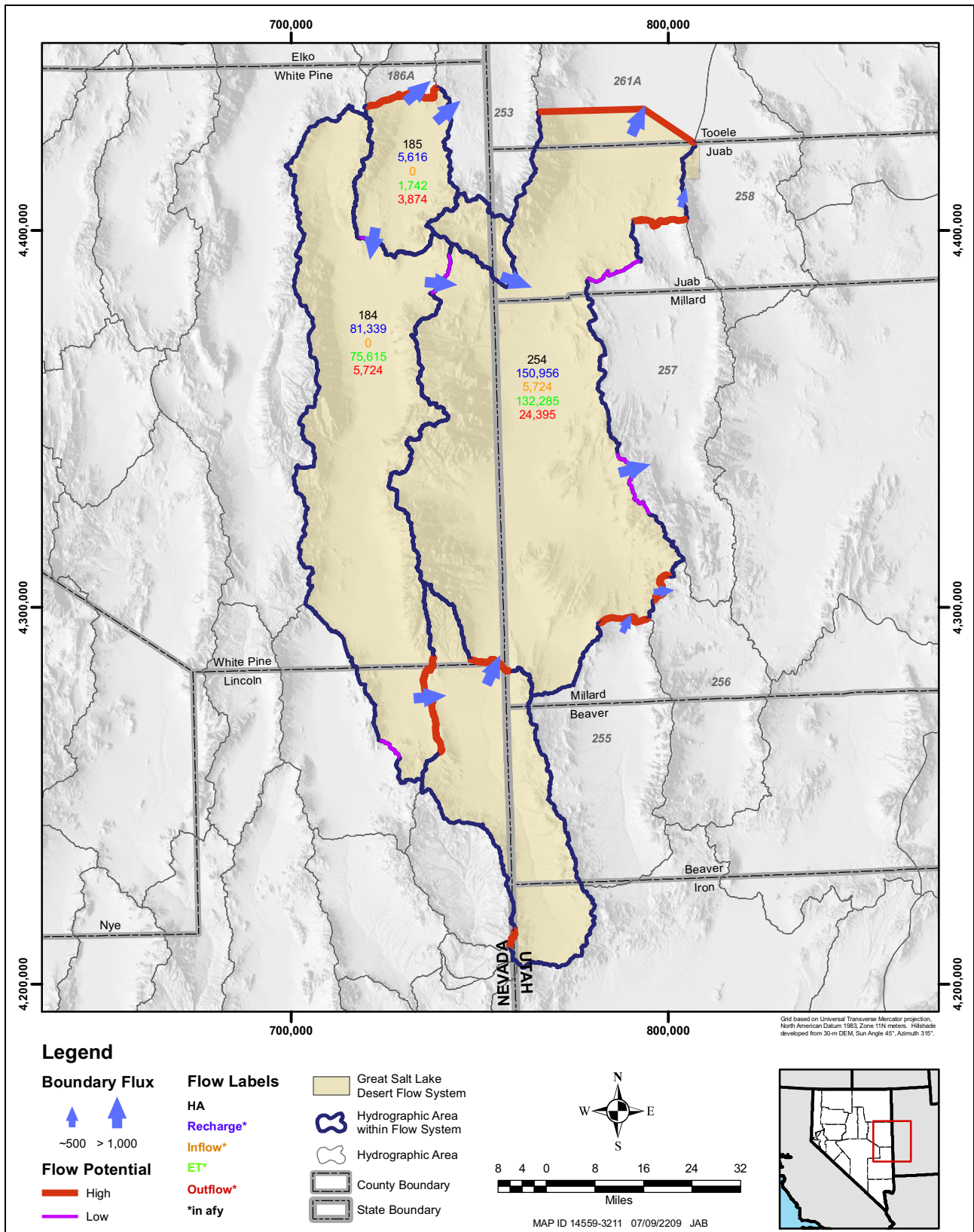


Figure I-2
Regional Groundwater Flow in the Great Salt Lake Desert Flow System