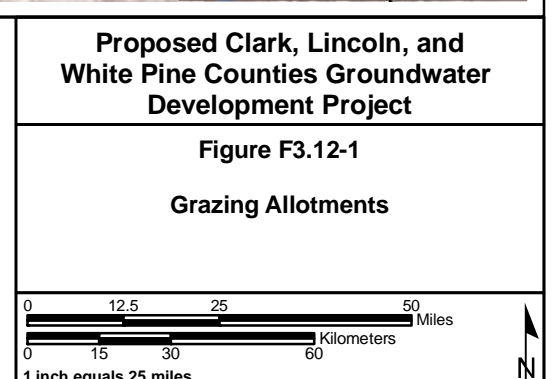
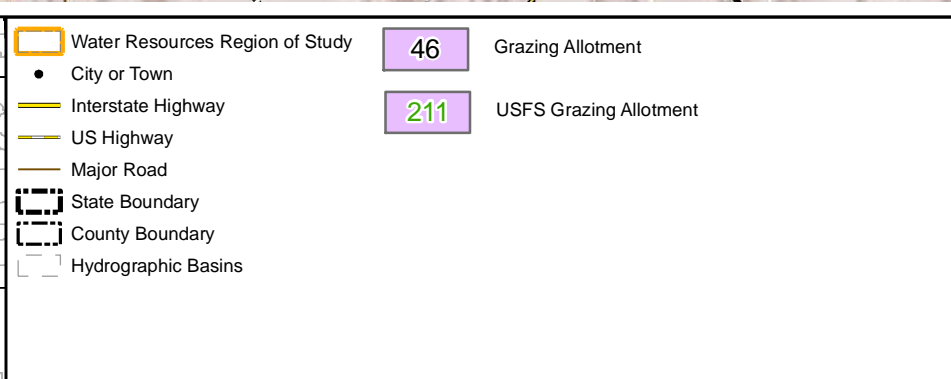
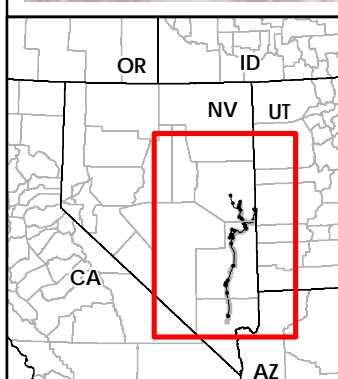
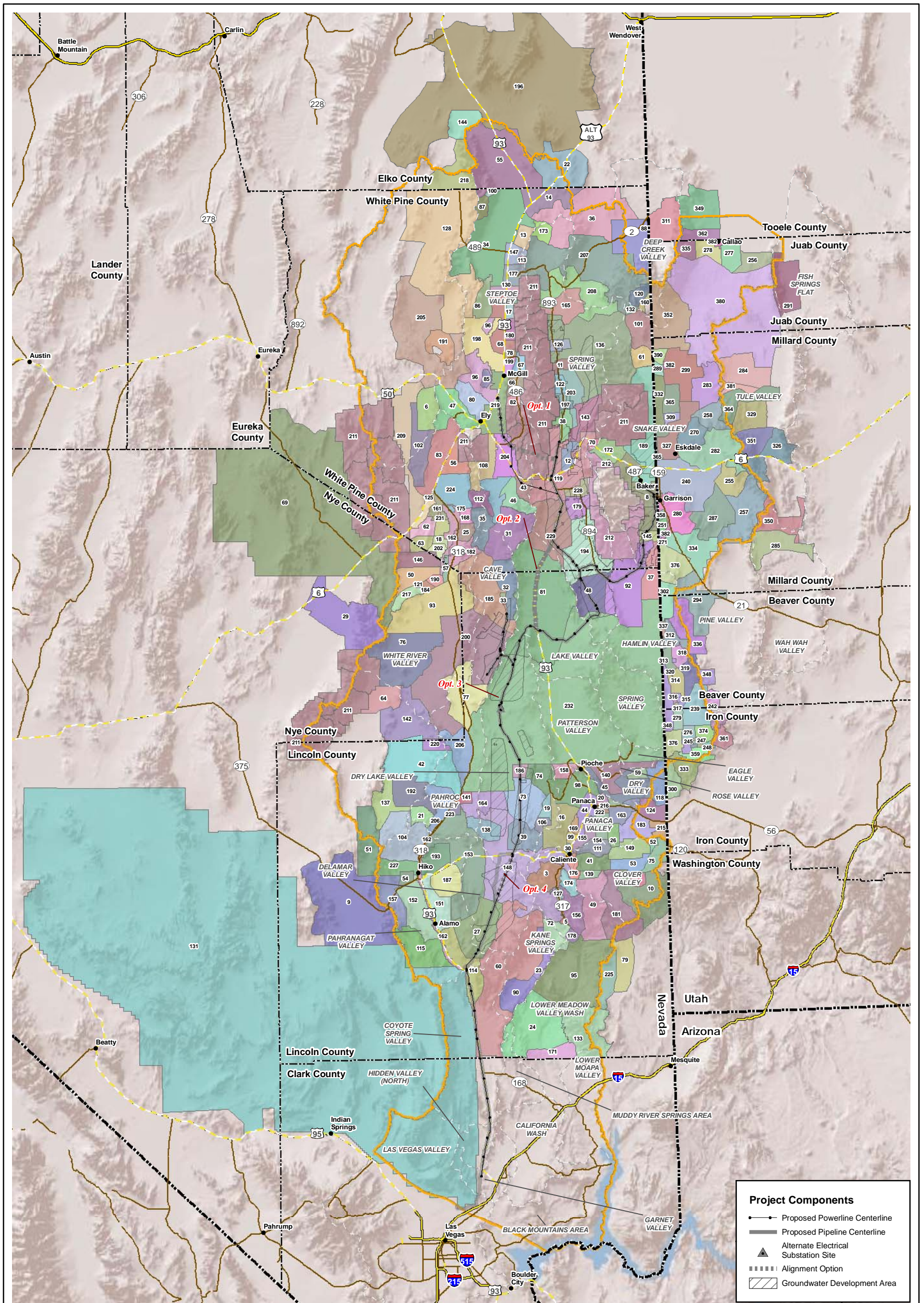


Appendix F3.12
Rangelands and Grazing

Appendix F3.12**Table of Contents**

Figure F3.12-1	Grazing Allotments
Table F3.12-1	Grazing Allotments Located Within the ROWs/Groundwater Development Areas for the Proposed Action
Table F3.12-2	Springs in Area of Potential Impact per Grazing Allotments by Time Period
Table F3.12-3	Sum of Miles of Perennial and Ephemeral Streams within the Area of Drawdown 10-foot or Greater
Table F3.12-4	Sum of Acres by Drawdown of Greater than 10-foot to Wetland/Meadow and Basin Shrubland Vegetation
Table F3.12-5	Cumulative Alternatives Comparison



No Warranty is made by the Bureau of Land Management as to the accuracy, reliability, or completeness of these data for individual use or aggregate use with other data.

Table F3.12-1 Grazing Allotments Located Within the ROWs/Groundwater Development Areas for the Proposed Action

Basin	Allotment Name	Allotment Number	Public Acres	ROW Acreage	Groundwater Development Area Acreage	Kind of Livestock and Season of Use	Total Active Animal Unit Months
California Wash	Ute ¹	02025	NDA ²	1,388	—	NDA ²	NDA ²
Cave Valley	Cave Valley Ranch ¹	00904	38,524	63	5,314	Cattle - 5/1 to 10/31	2,403
Cave Valley	Cave Valley Seeding	00908	942	—	1,274	Cattle - 5/1 to 8/10	200
Cave Valley	Fox Mountain	11001	73,412	—	4	Cattle - 11/1 to 4/10	6,322
Cave Valley	Haggarty Wash ¹	00907	904	—	1,056	Cattle - 6/15 to 10/15	194
Cave Valley	Shingle Pass ¹	00906	74,788	103	11,897	Cattle - 5/16 to 10/15	2,724
Cave Valley	Sunnyside ¹	21023	219,519	514	25,116	Cattle - 6/1 to 10/31	5,402
Cave Valley	Wilson Creek ¹	01201	1,007,994	32	365	Cattle and Sheep - 3/1 to 2/28	48,250
Coyote Spring Valley	Arrow Canyon ¹	02002	88,108	552	—	Cattle - Mar. to May; Sept. to Nov.	225
Coyote Spring Valley	Delamar ¹	01083	203,000	478	—	Cattle - 3/1 to 2/28	5,558
Coyote Spring Valley	Lower Lake East ¹	21022	NDA ²	422	—	NDA ²	NDA ²
Coyote Spring Valley	Military Withdrawal ¹	A	NDA ²	37	—	NDA ²	NDA ²
Coyote Spring Valley	Pittman Well	02019	43,210	156	—	NDA ²	NDA ²
Delamar Valley	Buckhorn ¹	21012	82,968	508	19,221	Cattle - 3/1 to 2/28	3,370
Delamar Valley	Delamar	01083	203,000	—	16,843	Cattle - 3/1 to 2/28	5,558
Delamar Valley	Oak Springs ¹	01050	193,609	599	26,060	Cattle - 3/1 to 2/28	9,268
Delamar Valley	Pahroc	01052	117,443	—	480	Cattle - 3/1 to 2/28	4,783
Dry Lake Valley	Cliff Springs ¹	21016	35,821	289	10,483	Cattle - 3/1 to 2/28	2,043
Dry Lake Valley	Ely Springs Cattle	11029	55,168	430	20,183	Cattle - 3/1 to 2/28	4,248
Dry Lake Valley	Ely Springs Sheep	21030	22,927	—	2,874	Cattle - 10/16 to 5/15	1,802
Dry Lake Valley	Geyser Ranch	01101	237,413	225	7,743	Cattle - 3/1 to 2/28	12,308
Dry Lake Valley	Mustang ¹	01047	23,877	—	5,397	Cattle - 3/1 to 2/28	1,134
Dry Lake Valley	Oak Springs	01050	193,609	372	—	Cattle - 3/1 to 2/28	9,268
Dry Lake Valley	Rattlesnake	01058	28,426	—	10,019	Cattle - 10/16 to 5/30	1,180
Dry Lake Valley	Simpson	21004	8,379	127	2,671	Cattle - 3/1 to 4/30	747
Dry Lake Valley	Wilson Creek ¹	01201	1,07,994	1336	82,941	Cattle and Sheep - 3/1 to 2/28	48,250

Table F3.12-1 Grazing Allotments Located Within the ROWs/Groundwater Development Areas for the Proposed Action (Continued)

Basin	Allotment Name	Allotment Number	Public Acres	ROW Acreage	Groundwater Development Area Acreage	Kind of Livestock and Season of Use	Total Active Animal Unit Months
Garnet Valley	Dry Lake ¹	02007	3,865	162	___	NDA ²	NDA
Garnet Valley	Las Vegas Valley	A	NDA ²	112	___	NDA ²	NDA ²
Garnet Valley	Pittman Well	02019	43,210	31	___	NDA ²	NDA
Hamlin Valley	Hamlin Valley ¹	00133	105,831	384	___	Cattle and Sheep - 11/1 to 5/31	8,177
Hidden Valley	Pittman Well ¹	02019	43,210	478	___	NDA ²	NDA
Lake Valley	Geyser Ranch ¹	01101	237,413	1,275	___	Cattle - 3/1 to 2/28	12,308
Lake Valley	Meadow Valley Wash	10129	NDA ²	108	___	NDA ²	NDA ²
Lake Valley	Meadow Valley Wash	01201	NDA ²	307	___	NDA ²	NDA ²
Las Vegas Valley	Las Vegas Valley – A ¹	A	49,004	204	___	NDA ²	NDA ²
Las Vegas Valley	Military Withdrawal ¹	A	4,529,391	19	___	NDA ²	NDA ²
Lower Meadow Valley Wash	Caliente	21014	2,008	8	___	Cattle - 3/1 to 2/28	40
Lower Meadow Valley Wash	Oak Springs	01050	193,609	114	___	Cattle - 3/1 to 2/28	9,268
Pahranagat Valley	Buckhorn	21012	82,968	112	___	Cattle - 3/1 to 2/28	3,370
Pahranagat Valley	Lower Lake East ¹	21022	41,800	141	___	Cattle - 3/1 to 2/28	640
Snake Valley	Baker Creek	10125	55,515	491	22,476	Cattle: 10/16 to 6/18 Sheep - 12/1 to 4/30	4,311
Snake Valley	Chokecherry	10131	32,334	___	7,663	Cattle – 10/16 to 6/5	3,327
Snake Valley	Hamblin Valley	00133	105,831	240	9,706	Cattle and Sheep – 11/1 to 5/31	8,177
Snake Valley	North Chokecherry	20134	8,692	149	8,288	Cattle - 10/15 to 5/15	770
Snake Valley	Bassett Creek	10114	7,328	___	2,405	Cattle - 3/1 to 2/28	591
Snake Valley	Bastian Creek	10121	13,527	___	4,895	Cattle - 3/1 to 2/28	1,778
Spring Valley	Cleveland Ranch	01119	11,656	12	10,490	Cattle - 11/1 to 2/28	1,021
Spring Valley	Cottonwood ¹	00132	491,727	468	37,206	Cattle – 11/1 to 6/15	2,248
Spring Valley	Hamlin Valley	00133	105,831	7	11,431	Cattle and Sheep – 11/1 to 5/31	8,177
Spring Valley	Majors Allotment ¹	10126	99,193	736	52,213	Cattle - 3/1 to 5/31, Sheep - 5/1 to 10/31	12,535
Spring Valley	McCoy Creek	10135	5,289	___	5,133	Cattle - 3/1 to 2/28	508
Spring Valley	Meadow Creek	10113	8,273	___	5,013	Cattle - 3/1 to 2/28	445

Table F3.12-1 Grazing Allotments Located Within the ROWs/Groundwater Development Areas for the Proposed Action (Continued)

Basin	Allotment Name	Allotment Number	Public Acres	ROW Acreage	Groundwater Development Area Acreage	Kind of Livestock and Season of Use	Total Active Animal Unit Months
Spring Valley	Muncy Creek	20111	207,906	—	15,708	Cattle - 3/1 to 2/28	12,684
Spring Valley	Negro Creek	00120	31,985	—	1,771	Cattle - 3/1 to 2/28	3,727
Spring Valley	Red Hills	00108	35,489	—	19	Cattle – 11/1 to 4/30	2,600
Spring Valley	Scotty Meadows	10128	17,322	—	8,862	Cattle – 6/1 to 9/30	1,227
Spring Valley	South Spring Valley ¹	10130	79,323	624	47,581	Cattle - 2/1 to 6/15 Sheep - 5/1 to 6/15, 9/1 to 9/30	6,329
Spring Valley	Stephens Creek	10118	3,784	—	2,935	Cattle and Sheep – 6/1 to 10/31	318
Spring Valley	Taft Creek	10116	28,294	—	3,828	Cattle – 4/15 to 11/30 Sheep – 11/1 to 2/28	1,831
Spring Valley	USFS – A ¹	A	—	77	193	NDA ²	NDA ²
Spring Valley	USFS/USPS	A	NDA ²	—	61	NDA ²	
Spring Valley	Willard Creek	10127	10,246	—	5,018	Cattle – 4/15 to 11/30	1,132
Spring Valley	Willow Springs ¹	10129	46,967	629	37,391	Cattle - 3/1 to 2/28	6,608
Spring Valley	Wilson Creek	01201	1,007,994	175	3,862	Cattle and Sheep - 3/1 to 2/28	48,250
Spring Valley	Cold Spring	00909	10,253	68	—	Cattle – 5/1 to 9/30	1,265
Spring Valley	Majors	10126	99,193	1	—	Cattle – 3/1 to 5/31 Sheep – 5/1 to 10/31	12,535
Steptoe Valley	Tamberlaine	00901	31,692	160	—	Cattle - 3/15 to 10/15	2,002
Steptoe Valley	USFS	A	NDA ²	31	—	NDA ²	NDA ²
Steptoe Valley	West Schell Bench	00433	25,915	115	—	Sheep - 5/01 to 11/01;	1,395

¹Majority of allotment occurs in the basin noted.²NDA = no data available on Geocommunicator web site.

Table F3.12-2 Springs in Area of Potential Impact per Grazing Allotments by Time Period

Grazing Allotment	No Action, Full Build Out	No Action, Full Build Out Plus 75 years	No Action, Full Build Out Plus 200 years	Proposed Action, Full Build Out	Proposed Action, Full Build Out Plus 75 years	Proposed Action, Full Build Out Plus 200 years	Alternative A, Full Build Out	Alternative A, Full Build Out Plus 75 years	Alternative A, Full Build Out Plus 200 years	Alternative B, Full Build Out	Alternative B, Full Build Out Plus 75 years	Alternative B, Full Build Out Plus 200 years	Alternative C, Full Build Out	Alternative C, Full Build Out Plus 75 years	Alternative C, Full Build Out Plus 200 years	Alternative D, Full Build Out	Alternative D, Full Build Out Plus 75 years	Alternative D, Full Build Out Plus 200 years	Alternative E, Full Build Out	Alternative E, Full Build Out Plus 75 years	Alternative E, Full Build Out Plus 200 years	Cumulative for Proposed Action, Full Build Out	Cumulative for Proposed Action, Full Build Out Plus 75 years	Cumulative for Proposed Action, Full Build Out Plus 200 years	
NV - BAKER CREEK - 10125					21	24		21	24		26	29		3	21			2					21	24	
NV - BARCLAY - 11004			2																			2	2	2	
NV - BASSETT CREEK - 10114					11	11																	11	11	
NV - BASTIAN CREEK - 10121					5	5		2	5	2	5	5								2	5		5	5	
NV - BECKY CREEK - 00404																								1	
NV - BECKY SPRINGS - 10101																						3	7	7	
NV - BENNETT SPRING - 21006		1	1																			1	1	1	
NV - BUCKBOARD SPRING - 21011			1																				2	2	
NV - CATTLE CAMP/CAVE VALLEY - 00903						6			6		6	6						6			6			6	
NV - CAVE VALLEY RANCH - 00904						3			1			3						1			1			3	
NV - CHERRY CREEK - 00403																							1	1	
NV - CHIMNEY ROCK - 00914												1													
NV - CHIN CREEK - 10104																							5	22	
NV - CHOKECHERRY - 10131					4	4		4	4		4	4		3	3			4					4	4	
NV - CLEVELAND RANCH - 01119					3	18			1	10	23	41									1		3	19	
NV - CLOVER CREEK - 21015			2																			2	3	3	
NV - COPPER FLAT - 00427	1																					1	1		
NV - COTTONWOOD - 21021			3																			3	3	3	
NV - CROSSROADS - 21024			1																			2	2	2	
NV - DEER LODGE - 21026		1	1																				1	1	
NV - GEYSER RANCH - 01101			8			9			8			9						9			4		1	9	
NV - HAMLIN VALLEY - 00133					18	18		18	18		18	18		8	10	1	7	18		1	1		18	18	
NV - HAYPRESS - 11033																						3	3	3	
NV - INDIAN GEORGE - 10112						1																		3	
NV - MAJORS - 10126				7	10	10	3	10	10	10	10	10	3	8	8				3	10	10	8	10	10	
NV - MCCOY CREEK - 10135					3	5																		5	6
NV - MUNCY CREEK - 20111				1	23	25		2	22										2	19	12	23	28		
NV - N-4/N-5 - 01049																								1	
NV - NEGRO CREEK - 00120					21	29				1	4	20									1		21	29	
NV - OAK SPRINGS - 01050	8	9	9																			8	9	9	
NV - PRESTON - 00806		1	1																					1	1
NV - PRIVATE - A		3	3																					4	4

Table F3.12-2 Springs in Area of Potential Impact per Grazing Allotments by Time Period (Continued)

Grazing Allotment	No Action, Full Build Out	No Action, Full Build Out Plus 75 years	No Action, Full Build Out Plus 200 years	Proposed Action, Full Build Out	Proposed Action, Full Build Out Plus 75 years	Proposed Action, Full Build Out Plus 200 years	Alternative A, Full Build Out	Alternative A, Full Build Out Plus 75 years	Alternative A, Full Build Out Plus 200 years	Alternative B, Full Build Out	Alternative B, Full Build Out Plus 75 years	Alternative B, Full Build Out Plus 200 years	Alternative C, Full Build Out	Alternative C, Full Build Out Plus 75 years	Alternative C, Full Build Out Plus 200 years	Alternative D, Full Build Out	Alternative D, Full Build Out Plus 75 years	Alternative D, Full Build Out Plus 200 years	Alternative E, Full Build Out	Alternative E, Full Build Out Plus 75 years	Alternative E, Full Build Out Plus 200 years	Cumulative for Proposed Action, Full Build Out	Cumulative for Proposed Action, Full Build Out Plus 75 years	Cumulative for Proposed Action, Full Build Out Plus 200 years
NV - RED HILLS - 00108					2	2			2												2		2	2
NV - ROX-TULE - 01063																								1
NV - SACRAMENTO PASS - 00123						4			2		3	6												4
NV - SAMPSON CREEK - 10105																							2	2
NV - SCOTTY MEADOWS - 10128					10	10		10	10		10	10		6	6			10		10	10	6	10	10
NV - SMITH CREEK - 20117					12	14		8	14		12	12		7	12								14	14
NV - SOUTH SPRING VALLEY - 10130					22	22		22	22	15	22	22		21	22		22	22		22	22	4	22	22
NV - STEPHENS CREEK - 10118												15												
NV - TAFT CREEK - 10116					17	20						12											17	26
NV - TIPPETT - 10106					1	14															1		6	17
NV - TIPPETT PASS - 20107					9	16			9												9		9	17
NV - USFS - 00417-00432						1						2												1
NV - USFS - 00433-00434						4			1		1	3			1									4
NV - USFS - 00435-00442			1		2	3		2	2		3	5		1	2			1		1	2	1	2	3
NV - WILLARD CREEK - 10127		2	2		2	2		2	2		2	2		2	2			2		2	2	2	2	2
NV - WILLOW SPRINGS - 10129					5	5		5	5	3	5	5			1		1	4		5	5		5	5
NV - WILSON CREEK - 01201	19	29	49			8			3			11		5	24		11	42			3	19	29	54
UT - BAKER - 04305						1																		1
UT - CLAY SPRINGS - 04312					1	1		1	1		1	1		1	1								1	1
UT - KNOLL SPRINGS - 04323					1	1		1	1			1											1	1
UT - SMITH CREEK - 04335					5	5		4	4			4		2	4								5	5
UT - STATELINE - 06238					1	1			1			1											1	1
UT - Unalloted - 09999					1	1		1	1		1	1		1	1								1	1
Total	28	46	86	8	210	303	3	113	180	41	156	259	3	63	94	1	41	121	3	55	104	77	297	437
Field Verified	6	12	20	3	42	55	1	27	43	13	35	49	1	19	24	1	13	29	1	19	30	20	63	77

Table F3.12-3 Sum of Miles of Perennial and Ephemeral Streams within the Area of Drawdown 10-foot or Greater

Grazing Allotments	No Action, Full Build Out	No Action, Full Build Out Plus 75 years	No Action, Full Build Out Plus 200 years	Proposed Action, Full Build Out	Proposed Action, Full Build Out Plus 75 years	Proposed Action, Full Build Out Plus 200 years	Alternative A, Full Build Out	Alternative A, Full Build Out Plus 75 years	Alternative A, Full Build Out Plus 200 years	Alternative B, Full Build Out	Alternative B, Full Build Out Plus 75 years	Alternative B, Full Build Out Plus 200 years	Alternative C, Full Build Out	Alternative C, Full Build Out Plus 75 years	Alternative C, Full Build Out Plus 200 years	Alternative D, Full Build Out	Alternative D, Full Build Out Plus 75 years	Alternative D, Full Build Out Plus 200 years	Alternative E, Full Build Out	Alternative E, Full Build Out Plus 75 years	Alternative E, Full Build Out Plus 200 years	Cumulative for Proposed Action, Full Build Out	Cumulative for Proposed Action, Full Build Out Plus 75 years	
NV - APPLEWHITE - 21001						3.34						3.34										3.57	5.83	
NV - ASH FLAT - 21002																								0.54
NV - BAKER CREEK - 10125				12.25	13.47		12.25	12.64		14.17	14.34		6.82	12.25		4.71						12.25	13.47	
NV - BARCLAY - 11004			3.94																		4.24	4.24	4.24	
NV - BASSETT CREEK - 10114				0.98	2.29																	2.29	2.29	
NV - BLACK HILLS - 21008																							0.37	
NV - CATTLE CAMP/CAVE VALLEY - 00903						3.32		3.32		3.32	3.32					3.32				3.32			3.32	
NV - CAVE VALLEY RANCH - 00904																							0.39	
NV - CHOKECHERRY - 10131				3.18	3.18		3.18	3.18		3.18	3.18		3.18	3.18		2.91						3.18	3.18	
NV - CLEVELAND RANCH - 01119				0.83	3.34			0.16	0.88	9.18	16.32								0.16			0.83	3.34	
NV - CLOVER CREEK - 21015			3.01																		3.01	3.01	3.01	
NV - COMET - 21018	1.11	1.11	1.11																		1.11	1.11	1.11	
NV - CONDOR CANYON - 21019																							0.1	
NV - CONDOR SUMMIT - 00915						0.75		0.75		0.75	0.75					0.75				0.75			0.75	
NV - COTTONWOOD - 21021			1.23																			1.33	2.09	
NV - ELGIN (LOWER RIGGS) - 01087												0.14											0.52	
NV - GEYSER RANCH - 01101		2.24	7.11			1.04		1.04		1.00	1.04					1.04				1.04			1.04	
NV - HAMLIN VALLEY - 00133				5.98	5.98		5.98	5.98		5.98	5.98		2.48	3.59	0.69	5.98						5.98	5.98	
NV - HAYPRESS - 11033																					1.91	1.94	1.91	
NV - HENRIE COMPLEX - 11034																							3.68	
NV - MAJORS - 10126				1.18	1.81	2.70	1.18	1.81	2.51	1.18	2.00	2.70	1.18	1.18	1.18			1.18	1.81	2.51	1.18	1.81	2.70	
NV - MCCOY CREEK - 10135					3.43	4.19																3.81	4.81	
NV - MEADOW CREEK - 10113				0.96	1.64	1.64		0.96	1.64										0.96	1.64	0.96	1.64	1.64	
NV - MEADOW VALLEY - 01041																						0.82	4.49	
NV - MUNCY CREEK - 20111				0.29	3.42	4.09		0.32	0.69									0.32	0.47	0.61	3.42	4.71	4.71	
NV - NEGRO CREEK - 00120				2.73	4.85	4.86					3.44	4.74									2.73	4.85	4.86	
NV - OAK SPRINGS - 01050	4.92	6.16	7.29																		4.92	7.00	7.91	
NV - PECK - 01055	0.49	0.49	0.49																		0.49	0.49	0.49	
NV - PENNSYLVANIA - 01056																							2.03	
NV - PRESTON - 00806					0.03	0.03																0.03	0.03	
NV - PRIVATE - A		3.91	3.91			0.47						0.47									0.47	4.38	4.38	
NV - RED HILLS - 00108					2.12	2.12			2.19											2.12		2.12	2.12	

Table F3.12-3 Sum of Miles of Perennial and Ephemeral Streams within the Area of Drawdown 10-foot or Greater (Continued)

Grazing Allotments	No Action, Full Build Out	No Action, Full Build Out Plus 75 years	No Action, Full Build Out Plus 200 years	Proposed Action, Full Build Out	Proposed Action, Full Build Out Plus 75 years	Proposed Action, Full Build Out Plus 200 years	Alternative A, Full Build Out	Alternative A, Full Build Out Plus 75 years	Alternative A, Full Build Out Plus 200 years	Alternative B, Full Build Out	Alternative B, Full Build Out Plus 75 years.	Alternative B, Full Build Out Plus 200 years	Alternative C, Full Build Out	Alternative C, Full Build Out Plus 75 years	Alternative C, Full Build Out Plus 200 years	Alternative D, Full Build Out	Alternative D, Full Build Out Plus 75 years	Alternative D, Full Build Out Plus 200 years	Alternative E, Full Build Out	Alternative E, Full Build Out Plus 75 years	Alternative E, Full Build Out Plus 200 years	Cumulative for Proposed Action, Full Build Out	Cumulative for Proposed Action, Full Build Out Plus 75 years
NV - SACRAMENTO PASS - 00123						0.66			0.66		0.66	3.19											0.66
NV - SCHLARMAN - 01068																							1.87
NV - SCOTTY MEADOWS - 10128					0.07	0.07		0.07	0.07		0.07	0.07		0.07	0.07		0.07		0.07	0.07	0.07	0.07	0.07
NV - SHEEP FLAT - 01069			6.63																		6.63	6.63	6.63
NV - SMITH CREEK - 20117					7.89	9.53		6.09	9.17		9.17	9.17		5.18	8.68							8.88	9.53
NV - STEPHENS CREEK - 10118					0.52	0.52					0.58	0.58										0.52	0.58
NV - TAFT CREEK - 10116					0.42	2.40						3.02										0.45	2.40
NV - TIPPETT - 10106					0.05	1.37														0.05		0.94	1.37
NV - TIPPETT PASS - 20107					1.99	1.99			2.11											1.99		1.99	1.99
NV - USFS - 00417-00432					0.58	1.42			0.33		0.33	3.37										0.58	1.42
NV - USFS - 00433-00434						0.96			0.62		0.26	1.5											0.96
NV - USFS - 00435-00442			0.45		6.96	9.93		6.96	9.93		8.96	11.08		3.68	6.98		6.87		2.14	4.84	1.81	6.96	10.35
NV - WHITE ROCK - 00902		4.86	4.86																			4.86	4.86
NV - WILLARD CREEK - 10127				0.89	0.89	1.09		0.89	1.09	0.89	0.89	1.09		0.89	0.89		0.66		0.89	1.09	0.89	0.89	1.09
NV - WILSON CREEK - 01201		2.14	19.32			1.83			0.03			1.83				3.79	13.08					2.14	21.58
UT - BIG WASH - 05797					0.02	0.02		0.02	0.02		0.02	0.02		0.02	0.02							0.02	0.02
UT - BURBANK - 04299					0.29	0.29		0.29	0.29		0.29	0.29		0.29	0.29							0.29	0.29
UT - CLAY SPRINGS - 04312					0.36	0.36		0.36	0.36		0.36	0.36		0.36	0.36							0.36	0.36
UT - Out - 999					0.02	0.02		0.02	0.02		0.02	0.02		0.02	0.02							0.02	0.02
UT - PRUESS LAKE - 00125					1.62	1.62		1.62	1.62		1.62	1.62		1.62	1.62							1.62	1.62
UT - Unalloted - 09999					11.20	11.20		11.20	11.20		11.20	11.20		11.20	11.20							11.20	11.20
Grand Total	6.56	18.74	52.41	6.04	73.39	102.07	1.18	52.03	71.62	2.95	77.45	104.59	1.18	37.00	50.35	4.48	39.39	1.18	6.19	20.07	32.40	118.55	176.22

Table F3.12-4 Sum of Acres by Drawdown of Greater than 10-foot to Wetland/Meadow and Basin Shrubland Vegetation

Grazing Allotments	No Action, Full Build Out	No Action, Full Build Out Plus 75 years	No Action, Full Build Out Plus 200 years	Proposed Action, Full Build Out	Proposed Action, Full Build Out Plus 75 years	Proposed Action, Full Build Out Plus 200 years	Alternative A, Full Build Out	Alternative A, Full Build Out Plus 75 years	Alternative A, Full Build Out Plus 200 years	Alternative B, Full Build Out	Alternative B, Full Build Out Plus 75 years.	Alternative B, Full Build Out Plus 200 years	Alternative C, Full Build Out	Alternative C, Full Build Out Plus 75 years	Alternative C, Full Build Out Plus 200 years	Alternative D, Full Build Out	Alternative D, Full Build Out Plus 75 years	Alternative D, Full Build Out Plus 200 years	Alternative E, Full Build Out	Alternative E, Full Build Out Plus 75 years	Alternative E, Full Build Out Plus 200 years	Cumulative for Proposed Action, Full Build Out	Cumulative for Proposed Action, Full Build Out Plus 75 years	Cumulative for Proposed Action, Full Build Out Plus 200 years	
NV - APPLEWHITE - 21001						83						83											83	179	
NV - ASH FLAT - 21002																								23	
NV - BAKER CREEK - 10125				2,883	2,883		2,883	2,883		2,883	2,883		2,791	2,883									2,883	2,883	
NV - BARCLAY - 11004			164																			202	202	202	
NV - BASSETT CREEK - 10114				3,516	5,455																		4,636	5,626	
NV - BASTIAN CREEK - 10121				2,848	8,028	8,028	505	4,389	6,383	5,945	8,028	8,028	505	3,131	3,389				505	4,389	6,177	3,180	8,028	8,028	
NV - BECKY SPRINGS - 10101																						2,979	2,979	2,979	
NV - CHERRY CREEK - 00403																						6,675	10,077	11,065	
NV - CHOKECHERRY - 10131				9,556	9,556		9,069	9,556		9,556	9,556		3,175	5,117	2,076	2,076	9,454				86		9,556	9,556	
NV - CLEVELAND RANCH - 01119				203	1,250	2,417		465	845	1,365	3,389	5,569		203	203						465	873	203	1,250	2,417
NV - CLOSED - A																						719	964	1,204	
NV - CLOVER CREEK - 21015			95																			95	145	145	
NV - COMET - 21018	62	1,203	1,221																			501	1,315	2,045	
NV - COTTONWOOD - 21021			39																			39	39	39	
NV - CRESTLINE - 11023			19																			19	19	19	
NV - CROSSROADS - 21024			171																			540	540	540	
NV - CURRIE - 04311																						22	161	201	
NV - DOUGLAS POINT - 00810		854	2,654																				854	2,654	
NV - ELGIN (LOWER RIGGS) - 01087																								1	
NV - ENTERPRISE - 11031			124																			328	328	328	
NV - GEYSER RANCH - 01101	10,371	27,125	34,150			36,983		7,709		1,421	36,983						36,983				6,511	10,371	29,086	36,983	
NV - HAMLIN VALLEY - 00133				2,774	2,774		2,768	2,774		2,774	2,774		1,234	1,969	606	606	2,774				148	432		2,774	2,774
NV - HAYPRESS - 11033																						405	405	405	
NV - LITTLE MOUNTAIN(RWH) - A																							67	67	
NV - MAJORS - 10126				4,030	6,650	6,650	2,936	6,248	6,442	6,262	6,650	6,650	2,936	4,114	4,350				2,936	6,248	6,333	4,163	6,650	6,650	
NV - MCCOY CREEK - 10135					382																		247	612	
NV - MEADOW CREEK - 10113				893	1,909	1,909	220	1,909	1,909				220	423					220	1,909	1,909	981	1,909	1,909	
NV - MEADOW VALLEY - 01041						0						0											0	93	
NV - MUNCY CREEK - 20111				1,546	21,587	23,056	438	9,402	13,337				438	296					438	9,402	13,081	3,151	22,267	23,254	
NV - N-4/N-5 - 01049																								164	

Table F3.12-4 Sum of Acres by Drawdown of Greater than 10-foot to Wetland/Meadow and Basin Shrubland Vegetation (Continued)

Grazing Allotments	No Action, Full Build Out	No Action, Full Build Out Plus 75 years	No Action, Full Build Out Plus 200 years	Proposed Action, Full Build Out	Proposed Action, Full Build Out Plus 75 years	Proposed Action, Full Build Out Plus 200 years	Alternative A, Full Build Out	Alternative A, Full Build Out Plus 75 years	Alternative A, Full Build Out Plus 200 years	Alternative B, Full Build Out	Alternative B, Full Build Out Plus 75 years.	Alternative B, Full Build Out Plus 200 years	Alternative C, Full Build Out	Alternative C, Full Build Out Plus 75 years	Alternative C, Full Build Out Plus 200 years	Alternative D, Full Build Out	Alternative D, Full Build Out Plus 75 years	Alternative D, Full Build Out Plus 200 years	Alternative E, Full Build Out	Alternative E, Full Build Out Plus 75 years	Alternative E, Full Build Out Plus 200 years	Cumulative for Proposed Action, Full Build Out	Cumulative for Proposed Action, Full Build Out Plus 75 years	Cumulative for Proposed Action, Full Build Out Plus 200 years
NV - NEGRO CREEK - 00120					4,883	5,668			178	1,120	4,782	5,811										408	4,883	5,903
NV - NORTH CHOKECHERRY - 20134					38	38		38	38		38	38		38	38								38	38
NV - PANACA CATTLE - 01053		58	58																			16	58	58
NV - PECK - 01055		18	18																				27	218
NV - PENNSYLVANIA - 01056																								33
NV - PRESTON - 00806		20	20																				20	20
NV - PRIVATE - A		2,618	3,575			225						225										225	2,926	3,822
NV - ROCKY HILL(RWH) - A																								11
NV - SCHLARMAN - 01068																								1
NV - SCOTTY MEADOWS - 10128		75	79	863	14,058	14,058	863	14,058	14,058	991	13,644	14,058	863	3,273	4,379			3,879	863	14,058	14,058	3,413	14,058	14,058
NV - SHEEP FLAT - 01069			83																			83	83	83
NV - SMITH CREEK - 20117					5,044	5,044		5,044	5,044		4,840	5,044		4,914	4,937								5,044	5,044
NV - SOUTH SPRING VALLEY - 10130				5,288	19,628	19,628	5,288	19,628	19,628		18,221	19,628	5,288	8,059	10,662	12,267	12,267	19,604	5,288	19,628	19,628	5,288	19,628	19,628
NV - STEPHENS CREEK - 10118															408									
NV - TAFT CREEK - 10116					513	3,071					1,472	3,481											1,027	3,571
NV - WHITE ROCK - 00902		12	12																				12	12
NV - WILLARD CREEK - 10127	161	507	980	1,493	2,227	2,227	1,246	2,227	2,227	1,493	2,227	2,227	1,246	2,227	2,227		99	1,246	2,227	2,227	2,227	2,227	2,227	2,227
NV - WILLOW SPRINGS - 10129				655	15,501	15,501	655	15,501	15,501	1,570	12,874	15,501	655	2,317	2,576	3,305	3,305	12,609	655	15,501	15,501	655	15,501	15,501
NV - WILSON CREEK - 01201																								59
UT - BAKER - 04305					9,965	17,215		7,157	9,999		4,722	8,792		3,612	4,148								9,971	17,709
UT - BIG WASH - 05797					12	12		12	12		12	12		12	12								12	12
UT - BURBANK - 04299					1,027	1,027		1,027	1,027		1,027	1,027		724	1,027			4					1,027	1,027
UT - CLAY SPRINGS - 04312					292	292		292	292		292	292		292	292								292	292
UT - KNOLL SPRINGS - 04323					5,001	9,265		3,430	4,310					222	222								5,001	9,613
UT - MORMON GAP - 04397					1,047	1,047		1,047	1,047		1,047	1,047		817	1,047								1,047	1,047
UT - Out - 999					289	289		289	289		289	289		289	289								289	289
UT - PRUESS LAKE - 00125					30	30		30	30		30	30		30	30								30	30
UT - SMITH CREEK - 04335					1,851	1,851		1,401	1,444			1,297		821	1,002								1,851	1,851
UT - STATELINE - 06238					1,274	1,274		1,107	1,274		1,107	1,274		306	860			406					1,274	1,274
UT - Unalloted - 09999					2,142	2,142		2,142	2,142		2,142	2,142		2,094	2,142								2,142	2,142
Grand Total	10,594	32,490	43,462	17,819	142,975	200,080	12,150	111,564	130,378	18,745	103,467	156,713	12,150	45,413	53,799	18,245	18,245	85,811	12,150	73,977	87,224	46,480	195,932	228,618

Table F3.12-5 Cumulative Alternatives Comparison

	Impact to Number of Springs ¹		Impact to Miles of Perennial Streams	Impact to Acres of Wetland/Meadow and Basin Shrubland Vegetation
	Total	Field Verified		
Cumulative – No Action at Full Build Out	44	12	28.1	23,381
Cumulative – No Action at Full Build Out Plus 75 Years	78	19	42.7	48,927
Cumulative – No Action at Full Build Out Plus 200 Years	116	26	76.9	61,750
Cumulative – Proposed Action at Full Build Out	77	20	46.7	46,480
Cumulative – Proposed Action at Full Build Out Plus 75 Years	297	63	141.5	195,932
Cumulative – Proposed Action at Full Build Out Plus 200 Years	437	77	192.2	228,618
Cumulative – Alternative A at Full Build Out	62	16	39.6	40,959
Cumulative – Alternative A at Full Build Out Plus 75 Years	227	51	128.2	165,666
Cumulative – Alternative A at Full Build Out Plus 200 Years	307	70	172.5	189,601
Cumulative – Alternative B at Full Build Out	96	27	47	48,439
Cumulative – Alternative B at Full Build Out Plus 75 Years	243	58	128.1	161,778
Cumulative – Alternative B at Full Build Out Plus 200 Years	360	70	178	183,815
Cumulative – Alternative C at Full Build Out	62	16	39.6	40,959
Cumulative – Alternative C at Full Build Out Plus 75 Years	168	40	105.1	101,782
Cumulative – Alternative C at Full Build Out Plus 200 Years	239	59	151.7	129,838
Cumulative – Alternative D at Full Build Out	41	13	26.9	17,547
Cumulative – Alternative D at Full Build Out Plus 75 Years	127	34	59.5	75,333
Cumulative – Alternative D at Full Build Out Plus 200 Years	201	49	109.1	119,366
Cumulative – Alternative E at Full Build Out	62	16	39.6	40,959
Cumulative – Alternative E at Full Build Out Plus 75 Years	167	42	87.7	127,338
Cumulative – Alternative E at Full Build Out Plus 200 Years	235	58	132.7	148,516

¹Total number of springs is a combination of springs that have been field verified and springs that appear on various map data.