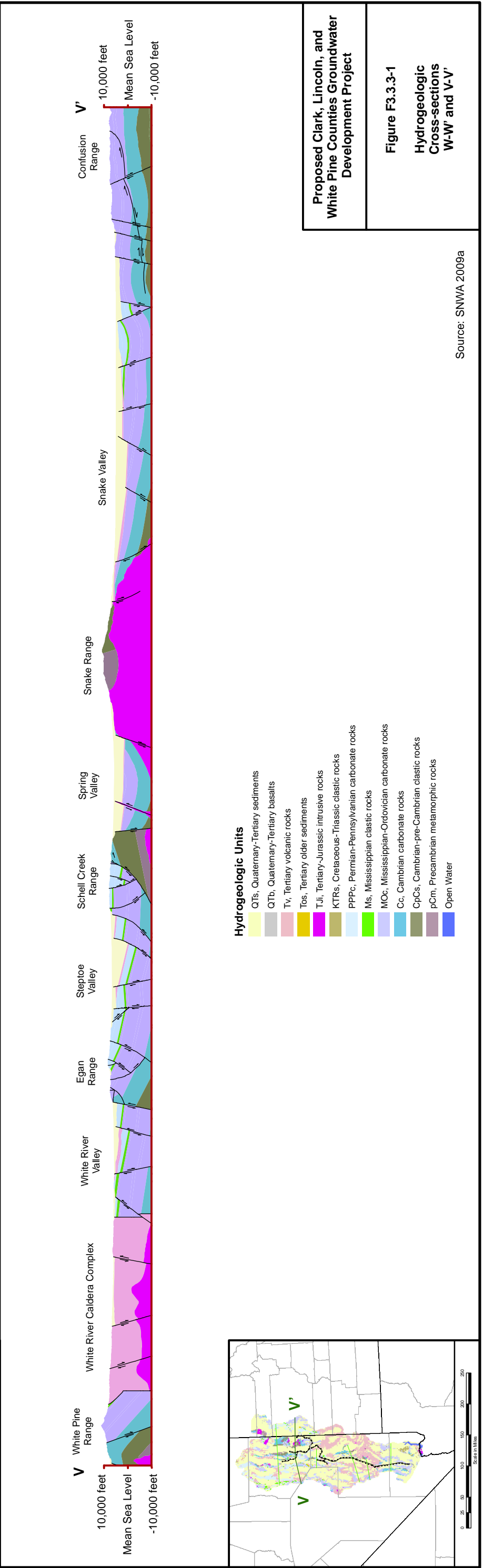
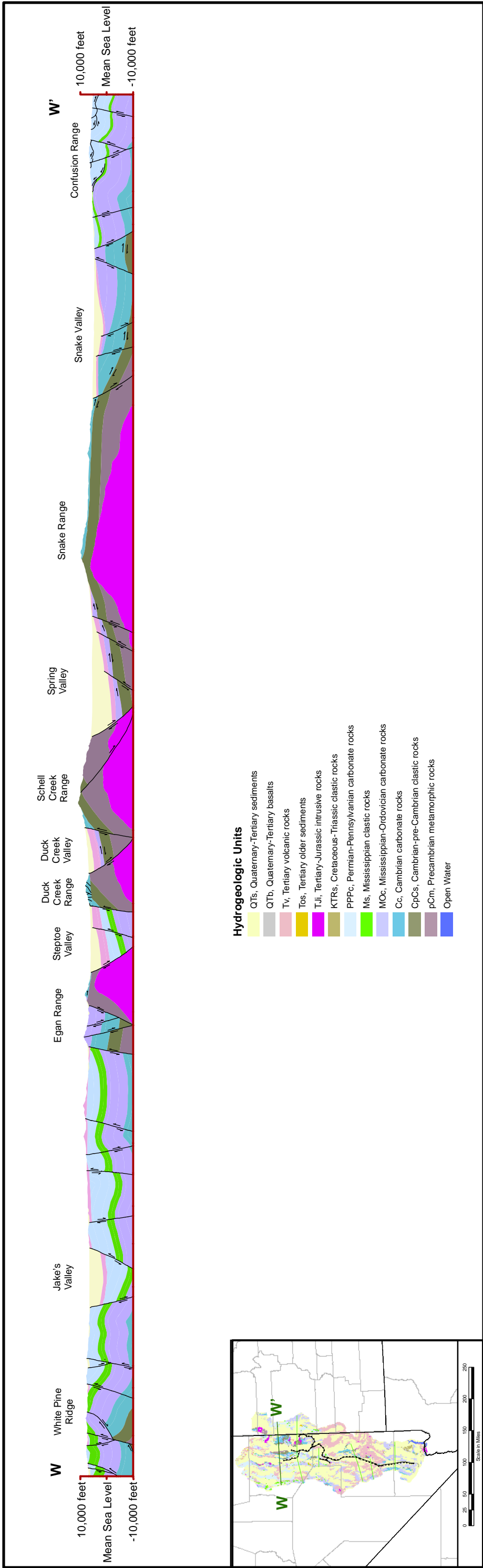


F3.3.3

Hydrogeologic Cross Sections

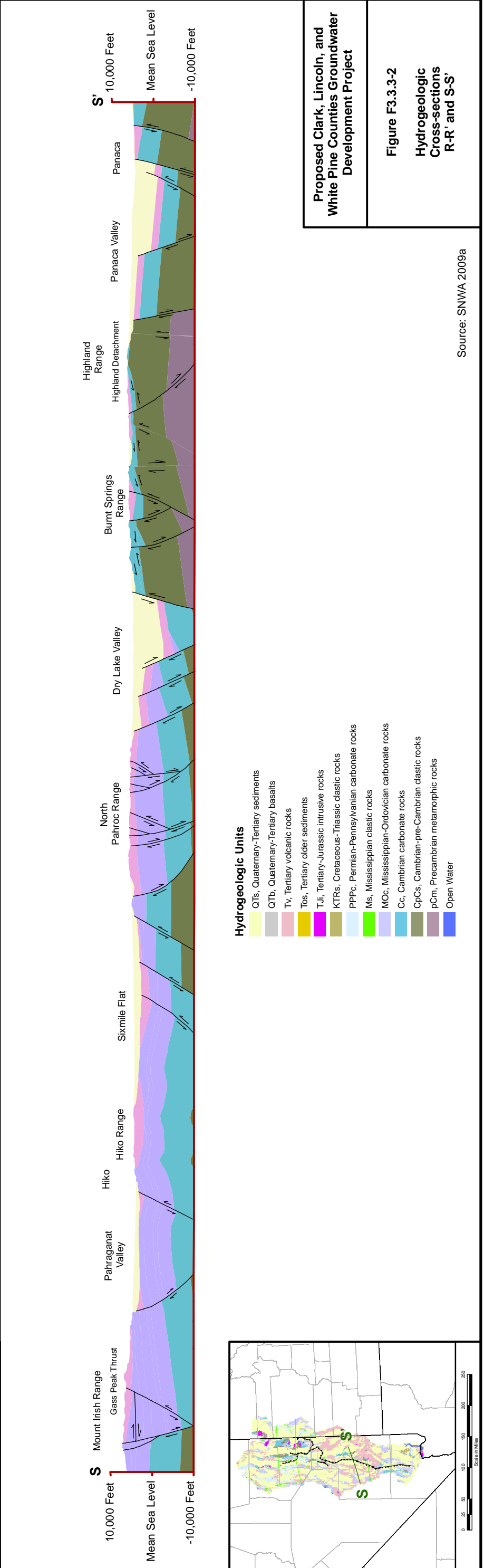
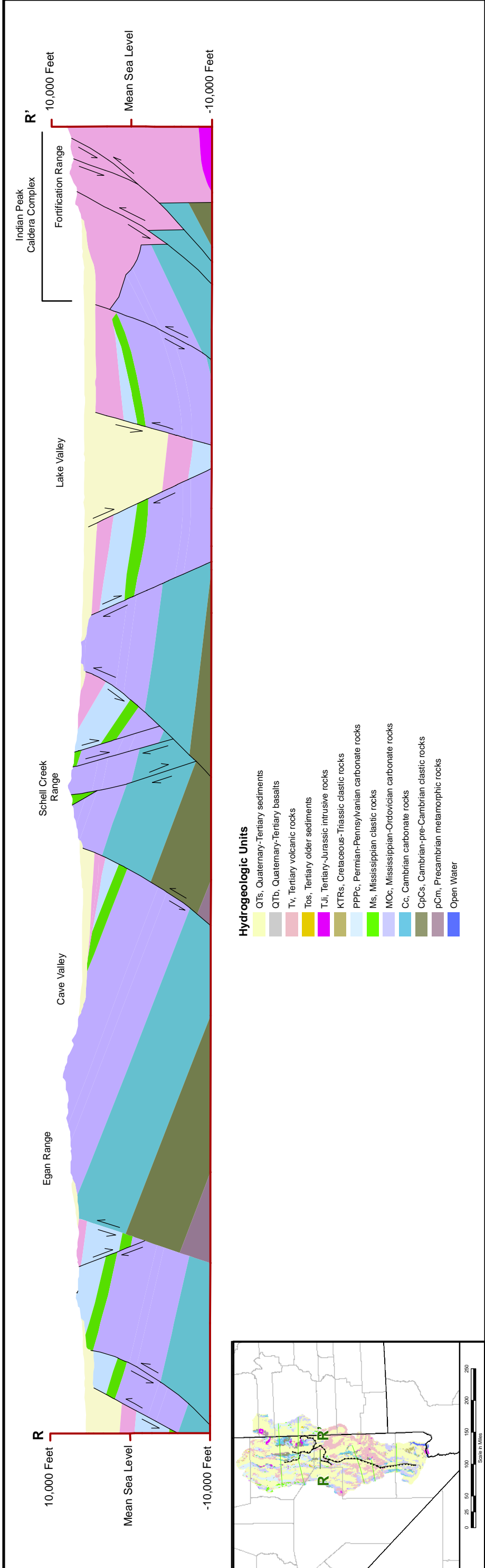


Proposed Clark, Lincoln, and White Pine Counties Groundwater Development Project

Figure F3.3.3-1
Hydrogeologic Cross-sections W-W' and V-V'

Source: SNWA 2009a

No Warranty is made by the Bureau of Land Management as to the accuracy, reliability, or completeness of these data for individual use or aggregate use with other data.

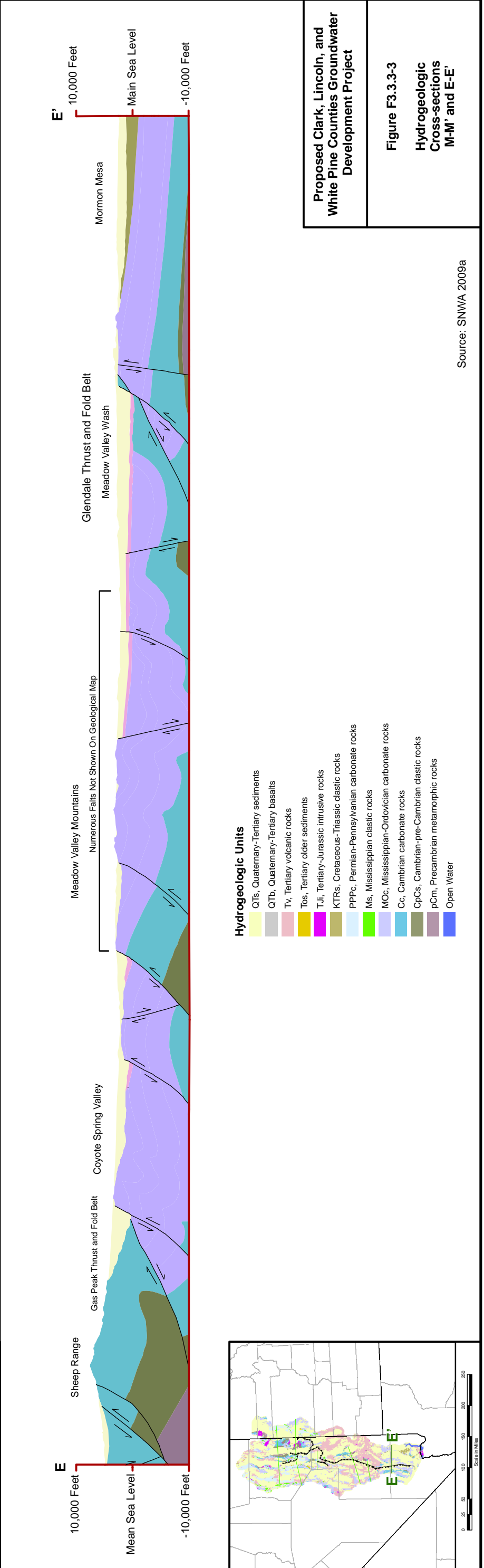
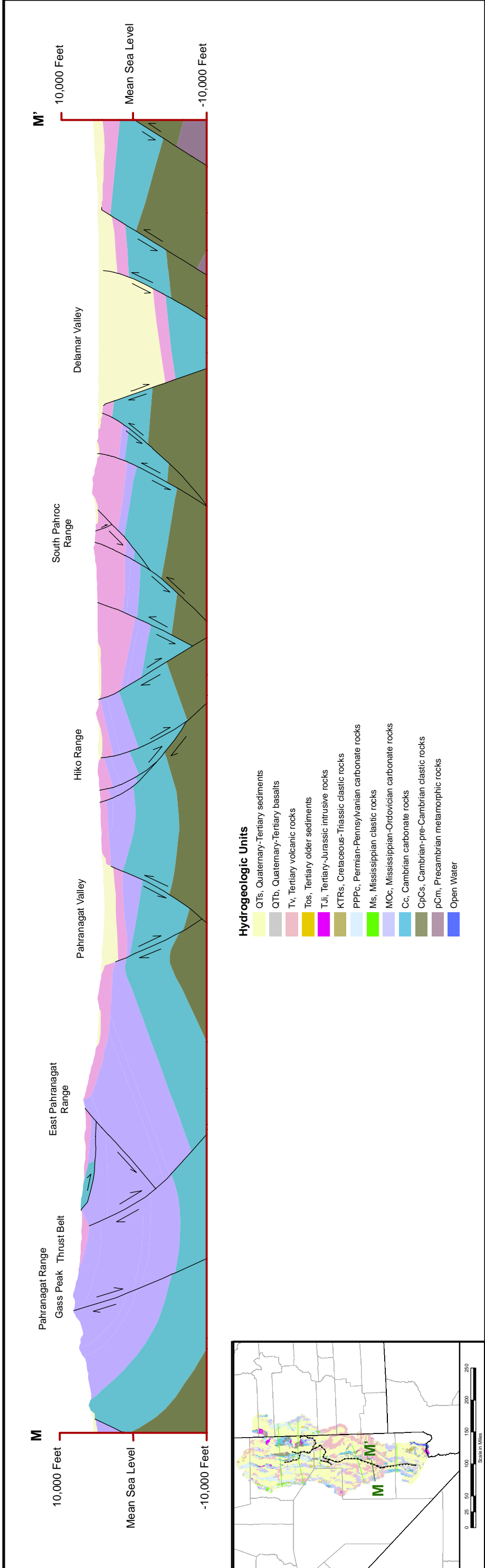


Proposed Clark, Lincoln, and White Pine Counties Groundwater Development Project

Figure F3.3.3-2
Hydrogeologic Cross-sections R-R' and S-S'

Source: SNWA 2009a

No Warranty is made by the Bureau of Land Management as to the accuracy, reliability, or completeness of these data for individual use or aggregate use with other data.



Proposed Clark, Lincoln, and White Pine Counties Groundwater Development Project

Figure F3.3.3-3
Hydrogeologic Cross-sections M-M' and E-E'

Source: SNWA 2009a

No Warranty is made by the Bureau of Land Management as to the accuracy, reliability, or completeness of these data for individual use or aggregate use with other data.