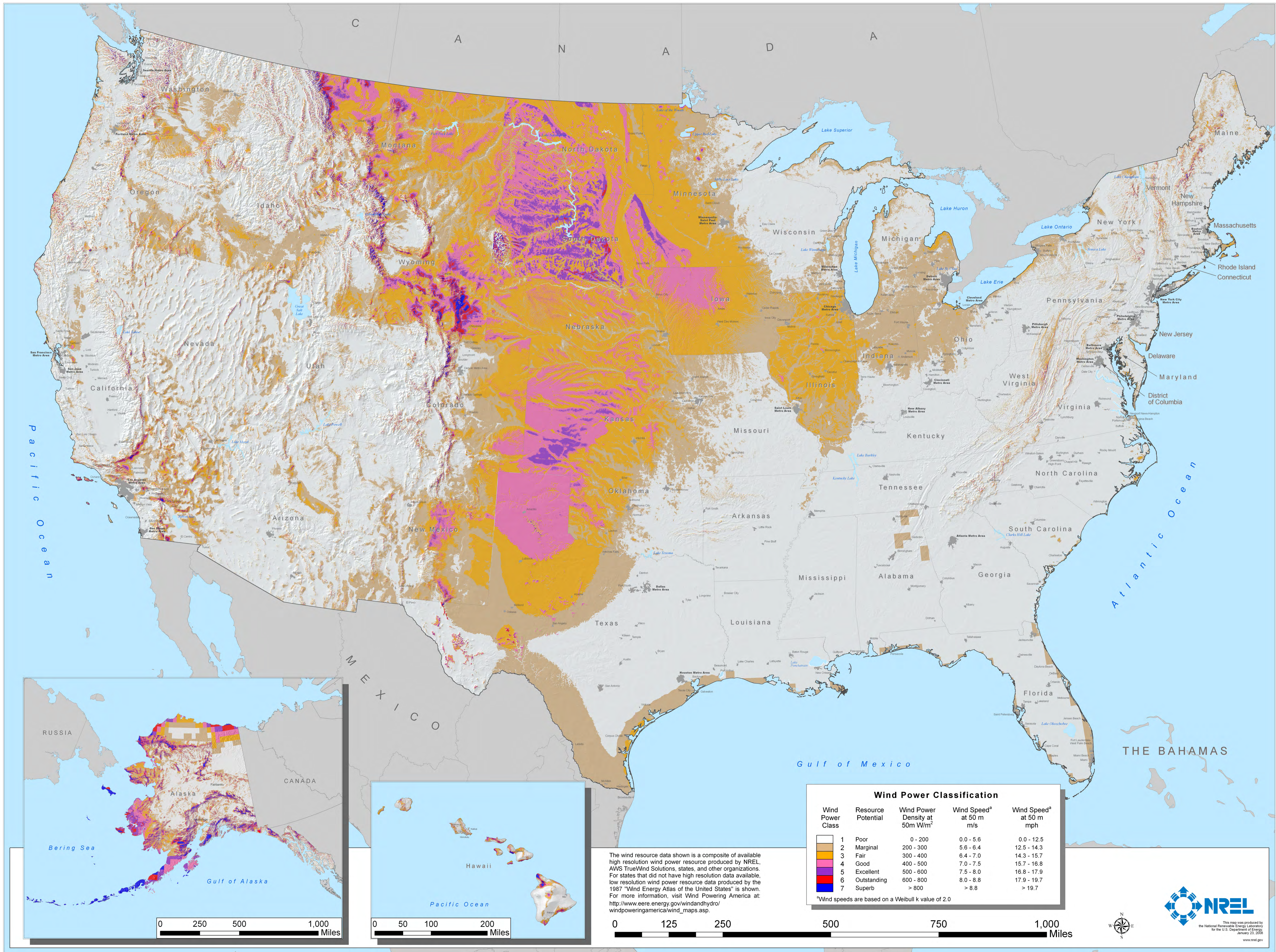


United States 50 meter Wind Power Resource



Wind Power Classification

Wind Power Class	Resource Potential	Wind Power Density at 50m W/m ²	Wind Speed ^a at 50 m m/s	Wind Speed ^a at 50 m mph
1	Poor	0 - 200	0.0 - 5.6	0.0 - 12.5
2	Marginal	200 - 300	5.6 - 6.4	12.5 - 14.3
3	Fair	300 - 400	6.4 - 7.0	14.3 - 15.7
4	Good	400 - 500	7.0 - 7.5	15.7 - 16.8
5	Excellent	500 - 600	7.5 - 8.0	16.8 - 17.9
6	Outstanding	600 - 800	8.0 - 8.8	17.9 - 19.7
7	Superb	> 800	> 8.8	> 19.7

^aWind speeds are based on a Weibull k value of 2.0

The wind resource data shown is a composite of available high resolution wind power resource produced by NREL, AWS TrueWind Solutions, states, and other organizations. For states that did not have high resolution data available, low resolution wind power resource data produced by the 1987 "Wind Energy Atlas of the United States" is shown. For more information, visit http://www.eere.energy.gov/windandhydro/windpoweringamerica/wind_maps.asp.



0 250 500 1,000 Miles

0 50 100 200 Miles

0 125 250 500 750 1,000 Miles

