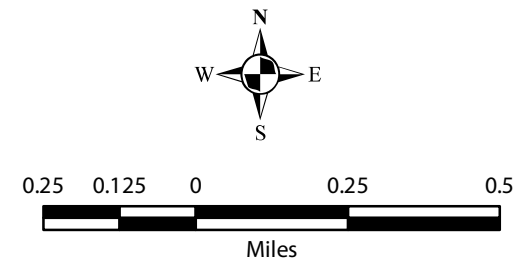


### Detailed Atlas of Mapped Vegetation in Spring Valley (Hydrographic Area 184), Nevada (2008-2009)

- Mapped Vegetation Communities\***
- Aquatic Biome (A)
  - Wetland Biome (W)
  - Grassland Biome (G)
  - Shrubland Biome (S)
  - Woodland Biome (T)
  - Early-Seral (E)
- Major Roads**
- U.S. Highway
  - State Route
  - Secondary Route



\*Majority of springs, wetlands, meadows and woodlands on the valley floor and alluvial fan were mapped, with the exception of some private lands where access was not granted. Minority of shrublands and early seral communities mapped.

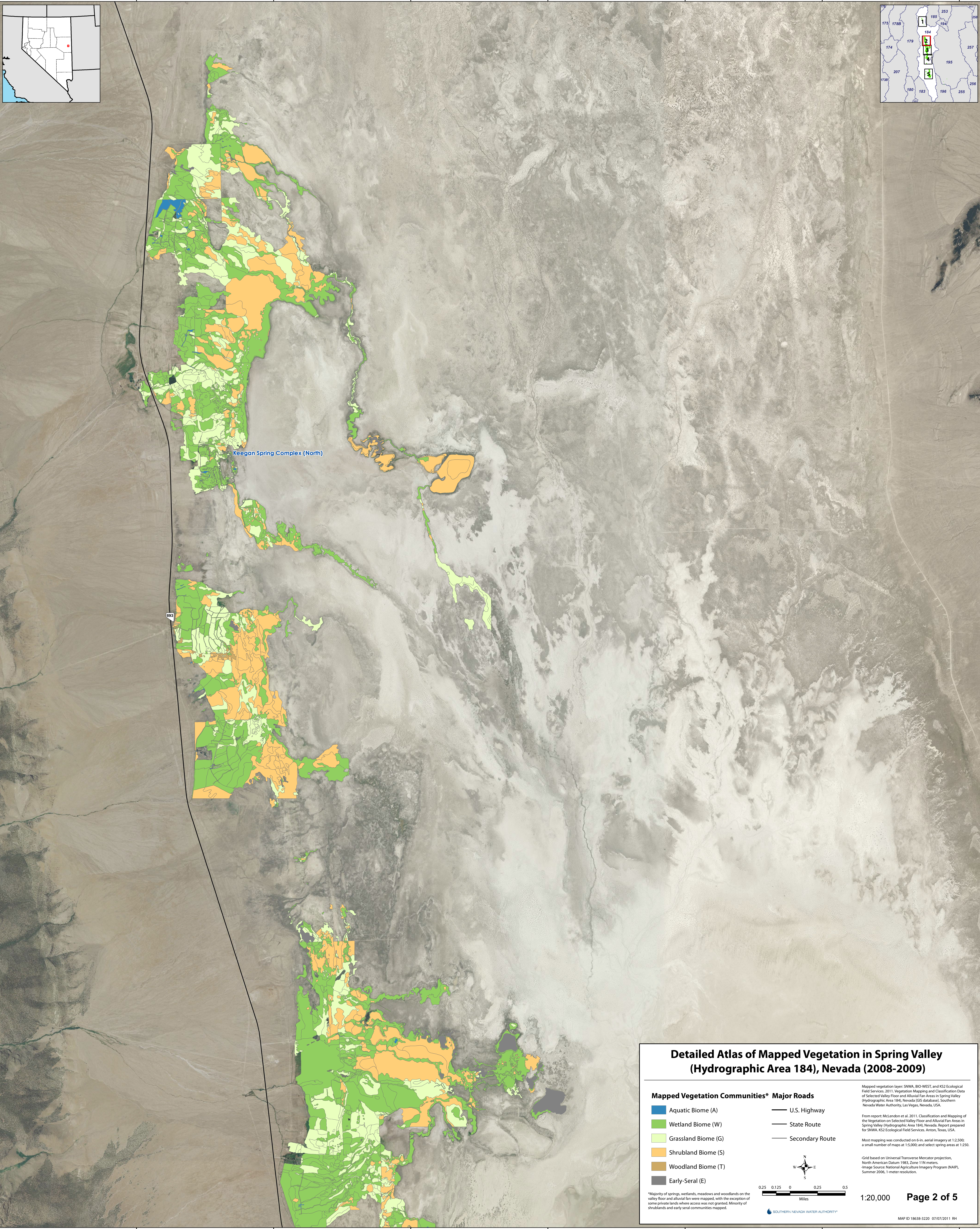
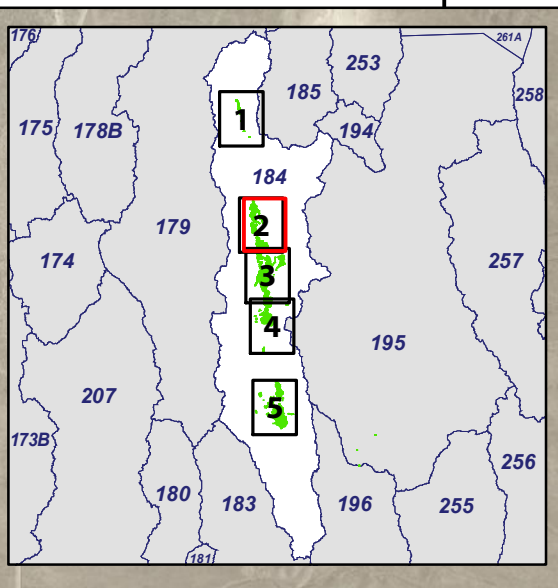
Mapped vegetation layer: SNWA, BIO-WEST, and KS2 Ecological Field Services, 2011. Vegetation Mapping and Classification Data of Selected Valley Floor and Alluvial Fan Areas in Spring Valley (Hydrographic Area 184), Nevada (GIS database). Southern Nevada Water Authority, Las Vegas, Nevada, USA.

From report: McLendon et al., 2011. Classification and Mapping of the Vegetation on Selected Valley Floor and Alluvial Fan Areas in Spring Valley (Hydrographic Area 184), Nevada. Report prepared for SNWA. KS2 Ecological Field Services, Anton, Texas, USA.

Most mapping was conducted on 6-in. aerial imagery at 1:2,500; a small number of maps at 1:5,000; and select spring areas at 1:250.

\*Grid based on Universal Transverse Mercator projection, North American Datum 1983, Zone 11N meters.

Image Source: National Agriculture Imagery Program (NAIP), Summer 2006, 1-meter resolution.



Keegan Spring Complex (North)

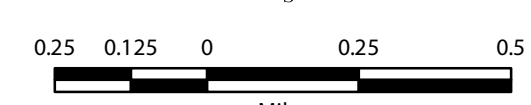
893

### Detailed Atlas of Mapped Vegetation in Spring Valley (Hydrographic Area 184), Nevada (2008-2009)

#### Mapped Vegetation Communities\* Major Roads

- Aquatic Biome (A)
- Wetland Biome (W)
- Grassland Biome (G)
- Shrubland Biome (S)
- Woodland Biome (T)
- Early-Seral (E)

- U.S. Highway
- State Route
- Secondary Route



\*Majority of springs, wetlands, meadows and woodlands on the valley floor and alluvial fan were mapped, with the exception of some private lands where access was not granted. Minority of shrublands and early seral communities mapped.

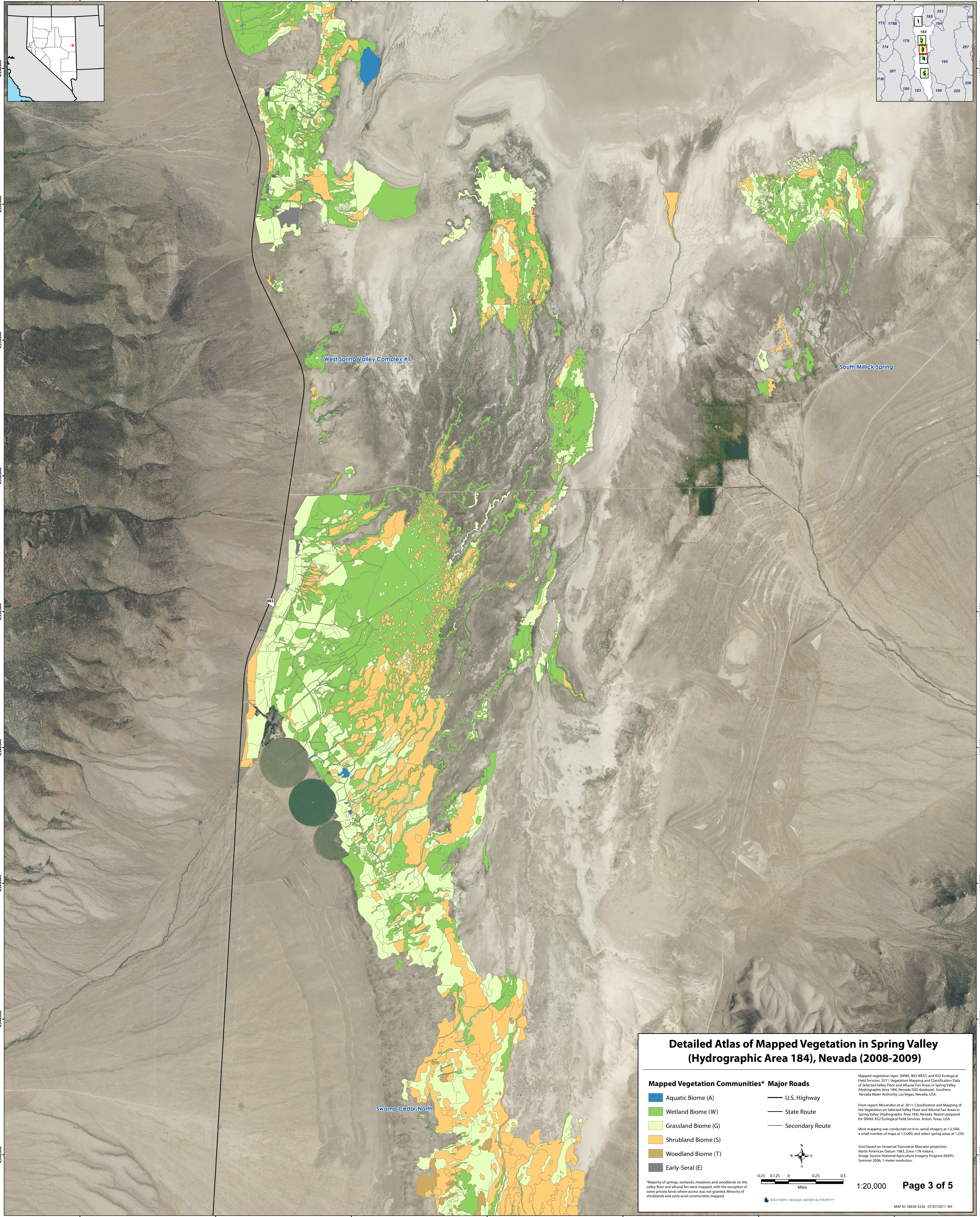
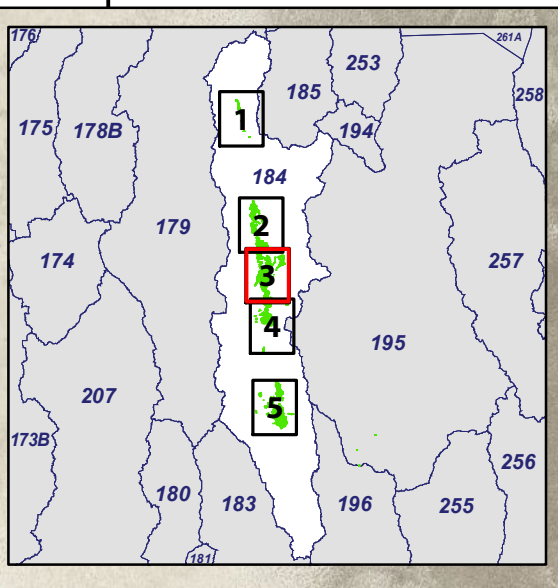
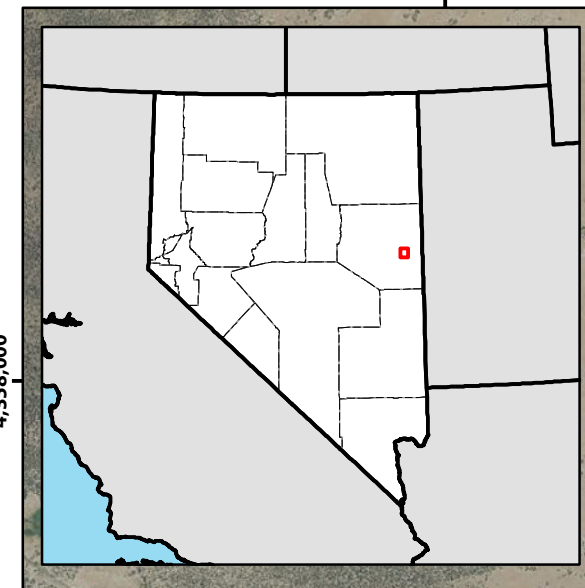
Mapped vegetation layer: SNWA, BIO-WEST, and KS2 Ecological Field Services, 2011. Vegetation Mapping and Classification Data of Selected Valley Floor and Alluvial Fan Areas in Spring Valley (Hydrographic Area 184), Nevada (GIS database). Southern Nevada Water Authority, Las Vegas, Nevada, USA.

From report: McLendon et al. 2011. Classification and Mapping of the Vegetation on Selected Valley Floor and Alluvial Fan Areas in Spring Valley (Hydrographic Area 184), Nevada. Report prepared for SNWA. KS2 Ecological Field Services, Anton, Texas, USA.

Most mapping was conducted on 6-in. aerial imagery at 1:2,500; a small number of maps at 1:5,000; and select spring areas at 1:250.

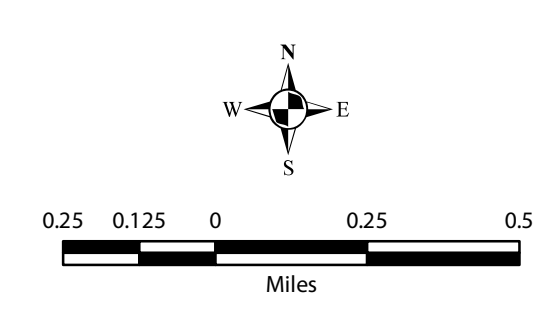
\*Grid based on Universal Transverse Mercator projection, North American Datum 1983, Zone 11N meters.

Image Source: National Agriculture Imagery Program (NAIP), Summer 2006, 1-meter resolution.



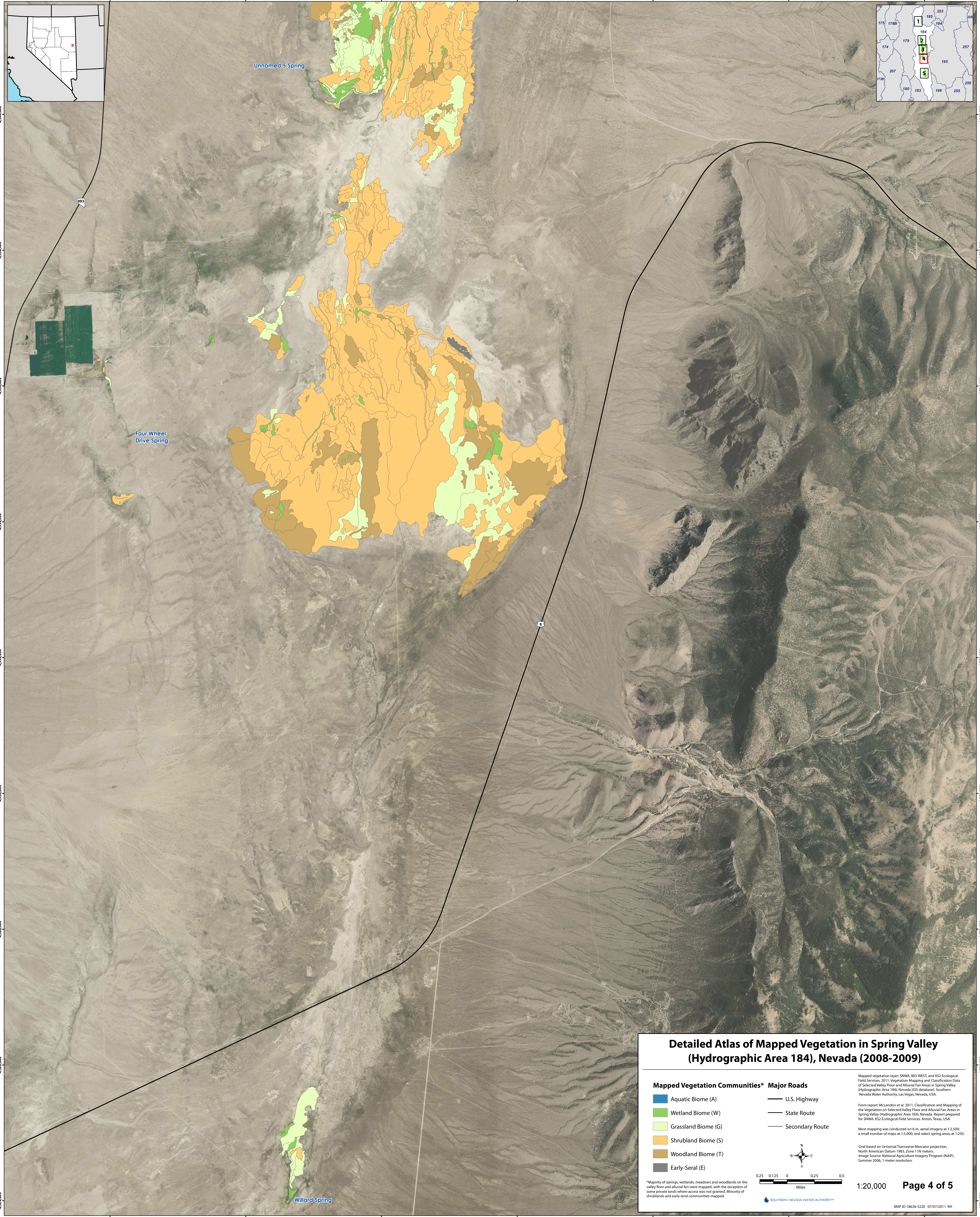
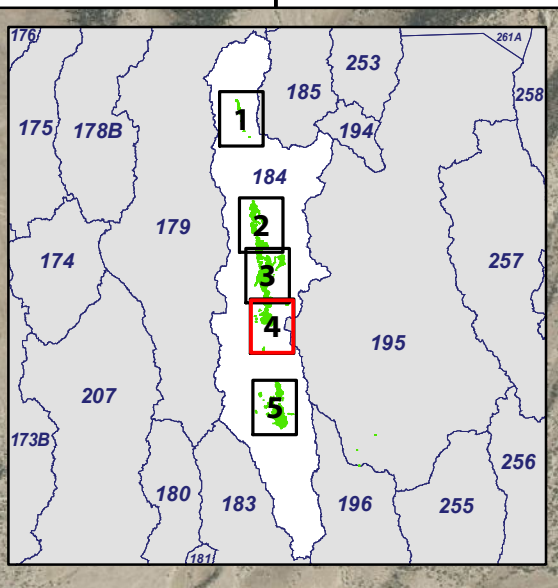
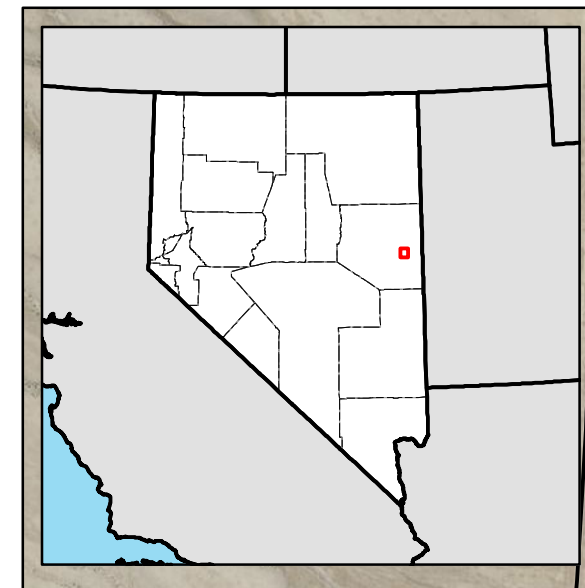
### Detailed Atlas of Mapped Vegetation in Spring Valley (Hydrographic Area 184), Nevada (2008-2009)

- Mapped Vegetation Communities\* Major Roads**
- Aquatic Biome (A)
  - Wetland Biome (W)
  - Grassland Biome (G)
  - Shrubland Biome (S)
  - Woodland Biome (T)
  - Early-Seral (E)
- U.S. Highway
  - State Route
  - Secondary Route



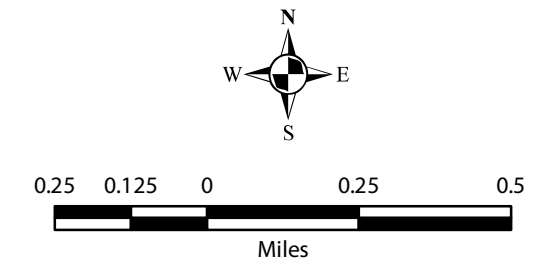
\*Majority of springs, wetlands, meadows and woodlands on the valley floor and alluvial fan were mapped, with the exception of some private lands where access was not granted. Minority of shrublands and early seral communities mapped.

Mapped vegetation layer: SNWA, BIO-WEST, and KS2 Ecological Field Services, 2011. Vegetation Mapping and Classification Data of Selected Valley Floor and Alluvial Fan Areas in Spring Valley (Hydrographic Area 184), Nevada (GIS database). Southern Nevada Water Authority, Las Vegas, Nevada, USA.  
From report: McLendon et al. 2011. Classification and Mapping of the Vegetation on Selected Valley Floor and Alluvial Fan Areas in Spring Valley (Hydrographic Area 184), Nevada. Report prepared for SNWA. KS2 Ecological Field Services, Anton, Texas, USA.  
Most mapping was conducted on 6-in. aerial imagery at 1:2,500; a small number of maps at 1:5,000; and select spring areas at 1:250.  
Grid based on Universal Transverse Mercator projection, North American Datum 1983, Zone 11N meters.  
Image Source: National Agriculture Imagery Program (NAIP), Summer 2006, 1-meter resolution.



### Detailed Atlas of Mapped Vegetation in Spring Valley (Hydrographic Area 184), Nevada (2008-2009)

- Mapped Vegetation Communities\***
- Aquatic Biome (A)
  - Wetland Biome (W)
  - Grassland Biome (G)
  - Shrubland Biome (S)
  - Woodland Biome (T)
  - Early-Seral (E)
- Major Roads**
- U.S. Highway
  - State Route
  - Secondary Route



\*Majority of springs, wetlands, meadows and woodlands on the valley floor and alluvial fan were mapped, with the exception of some private lands where access was not granted. Minority of shrublands and early seral communities mapped.

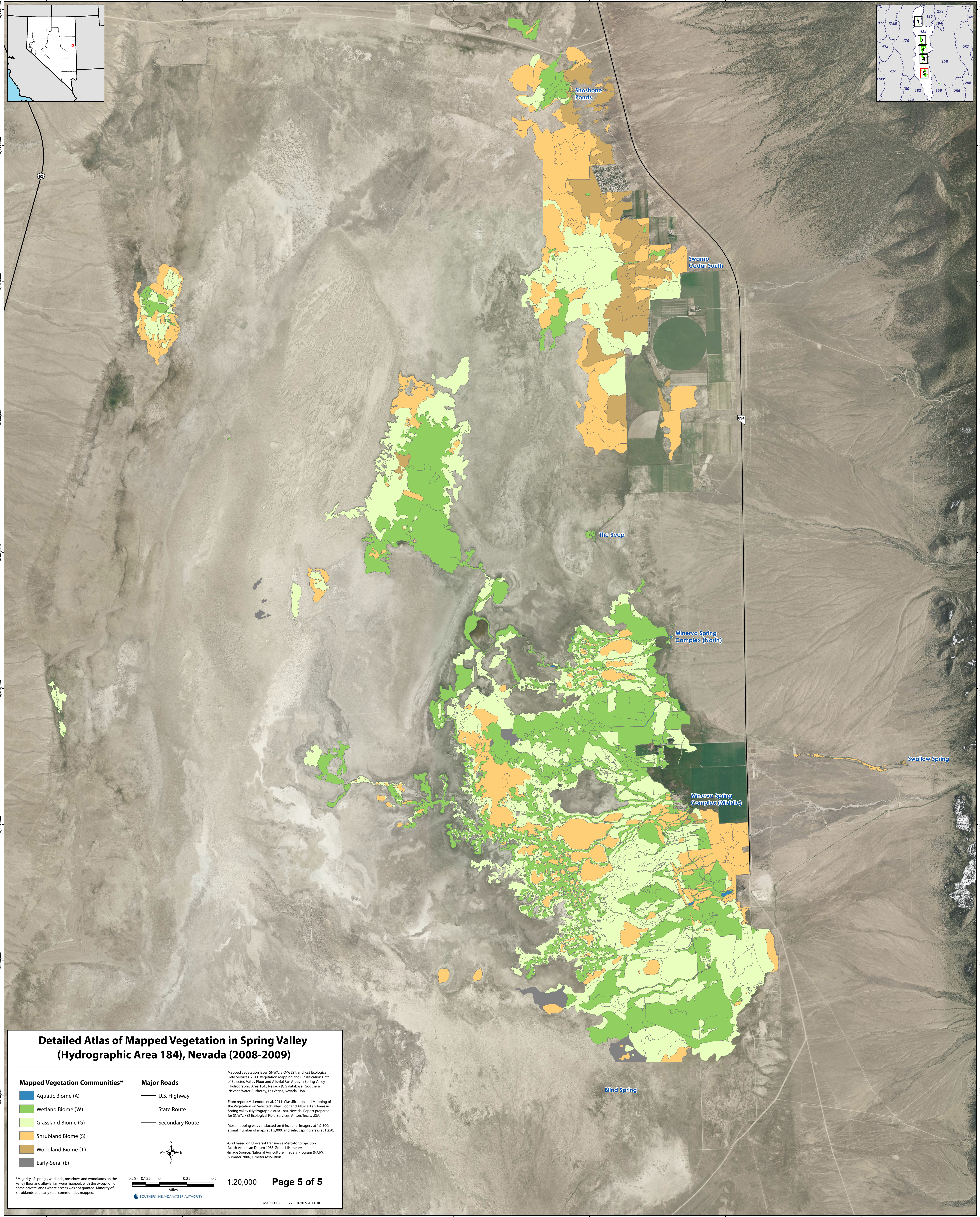
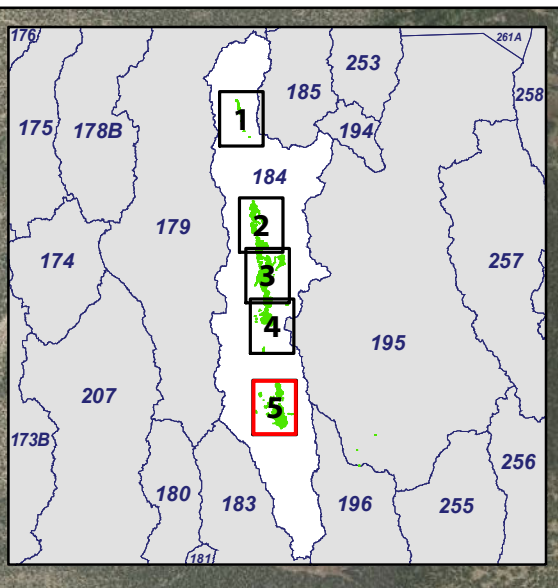
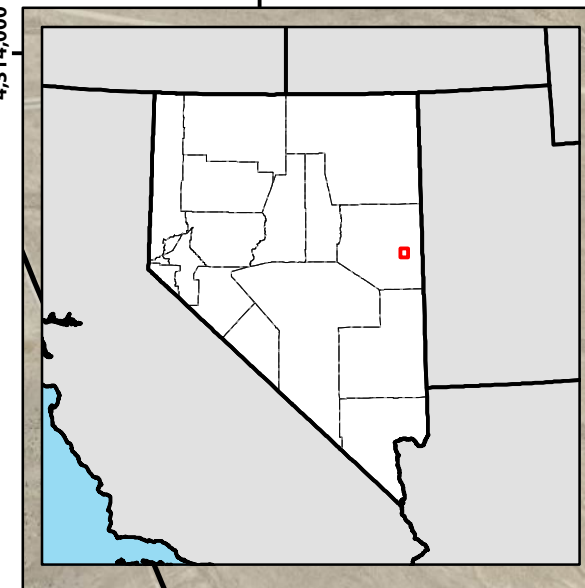
Mapped vegetation layer: SNWA, BIO-WEST, and KS2 Ecological Field Services, 2011. Vegetation Mapping and Classification Data of Selected Valley Floor and Alluvial Fan Areas in Spring Valley (Hydrographic Area 184), Nevada (GIS database). Southern Nevada Water Authority, Las Vegas, Nevada, USA.

From report: McLendon et al. 2011. Classification and Mapping of the Vegetation on Selected Valley Floor and Alluvial Fan Areas in Spring Valley (Hydrographic Area 184), Nevada. Report prepared for SNWA. KS2 Ecological Field Services, Anton, Texas, USA.

Most mapping was conducted on 6-in. aerial imagery at 1:2,500; a small number of maps at 1:5,000; and select spring areas at 1:250.

\*Grid based on Universal Transverse Mercator projection, North American Datum 1983, Zone 11N meters.

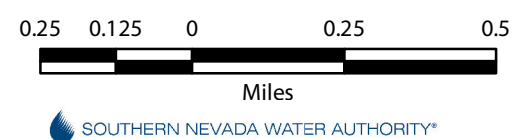
Image Source: National Agriculture Imagery Program (NAIP), Summer 2006, 1-meter resolution.



### Detailed Atlas of Mapped Vegetation in Spring Valley (Hydrographic Area 184), Nevada (2008-2009)

- Mapped Vegetation Communities\***
- Aquatic Biome (A)
  - Wetland Biome (W)
  - Grassland Biome (G)
  - Shrubland Biome (S)
  - Woodland Biome (T)
  - Early-Seral (E)

- Major Roads**
- U.S. Highway
  - State Route
  - Secondary Route



Mapped vegetation layer: SNWA, BIO-WEST, and K&S2 Ecological Field Services, 2011. Vegetation Mapping and Classification Data of Selected Valley Floor and Alluvial Fan Areas in Spring Valley (Hydrographic Area 184), Nevada (GIS database), Southern Nevada Water Authority, Las Vegas, Nevada, USA.

From report: McLendon et al. 2011. Classification and Mapping of the Vegetation on Selected Valley Floor and Alluvial Fan Areas in Spring Valley (Hydrographic Area 184), Nevada. Report prepared for SNWA, K&S2 Ecological Field Services, Anton, Texas, USA.

Most mapping was conducted on 6-in. aerial imagery at 1:2,500; a small number of maps at 1:5,000; and select spring areas at 1:250.

\*Grid based on Universal Transverse Mercator projection, North American Datum 1983, Zone 11N meters.  
Image Source: National Agriculture Imagery Program (NAIP), Summer 2006, 1-meter resolution.

\*Majority of springs, wetlands, meadows and woodlands on the valley floor and alluvial fan were mapped, with the exception of some private lands where access was not granted. Minority of shrublands and early seral communities mapped.