

ENR-335 DL

7/10/11/12

Z-3

MX SITING INVESTIGATION  
GRAVITY SURVEY - DRY LAKE VALLEY  
NEVADA

**FUGRO NATIONAL**  
CONSULTING ENGINEERS AND GEOLOGISTS

MX SITING INVESTIGATION  
GRAVITY SURVEY - DRY LAKE VALLEY  
NEVADA

Prepared for:

U.S. Department of the Air Force  
Ballistic Missile Office (BMO)  
Norton Air Force Base, California 92409

Prepared by:

Fugro National, Inc.  
3777 Long Beach Boulevard  
Long Beach, California 90807

17 March 1980

## FOREWORD

Methodology and Characterization Studies during fiscal years 1977 and 1978 included gravity surveys in ten valleys in Arizona (five), Nevada (two), New Mexico (two), and California (one). The gravity data were obtained for the purpose of estimating the gross structure and shape of the basins and the thickness of the valley fill. There was also the possibility of detecting shallow rock in areas between boring locations. Generalized interpretations from these surveys were included in Fugro National's Characterization Reports (FN-TR-26a through e).

During the FY 77 surveys, the measurements were made to form an approximate one-mile grid over the study areas, and contour maps showing interpreted depth to bedrock were made. In FY 79, the decision was made to concentrate the available funds on the basic Verification Program to verify and refine suitable area boundaries. This decision resulted in a reduction in the gravity program. Instead of obtaining gravity data on a grid, the reduced program consisted of obtaining gravity measurements along profiles across the valleys where Verification Studies were also performed.

The Defense Mapping Agency (DMA), St. Louis, was also requested to provide gravity data from their library to supplement the gravity profiles. For Big Smoky, Reveille, and Railroad valleys, a sufficient density of library data is available to permit construction of interpreted contour maps instead of two-dimensional cross sections.

In late summer of FY 79, supplementary funds became available to begin data reduction. At this time, inner zone terrain corrections began on the library data and the profiles from Big Smoky Valley, Nevada, and Butler and La Posa valleys, Arizona. The profile data from Whirlwind, Hamlin, Snake East, White River and Garden Coal valleys, Nevada were available from the field in early October, 1979.

A continuation of gravity interpretations has been incorporated into the FY 80 contract and the results are being summarized in a series of valley reports. The reports covering Nevada-Utah gravity studies will be numbered, "FN-TR-33-", followed by the abbreviation for the subject valley. In addition, more detailed reports of the results of FY 77 surveys in Dry Lake and Ralston valleys, Nevada are being prepared. Verification Studies are continuing in FY 80 and gravity studies are included in the program. DMA will continue to obtain the field measurements and it is planned to return to the grid pattern. The interpretation of the grid data will allow the production of contour maps which will be valuable in the deep basin structural analysis needed for computer modeling in the Water Resources Program. The gravity interpretations will also be useful in the Nuclear Hardness and Survivability (NH&S) evaluations.

The basic decisions governing the gravity program are made by BMO following consultation with TRW Inc., Fugro National and the (DMA). Conduct of the gravity studies is a joint effort between DMA and Fugro National. The field work, including planning, logistics, surveying, and meter operation is done by the Defense Mapping Agency Hydrographic/Topographic Center (DMAHTC), headquartered in Cheyenne, Wyoming. DMAHTC reduces the data to Simple Bouguer Anomaly (see Section A1.4, Appendix A1.0). The Defense Mapping Agency Aerospace Center (DMAAC), St. Louis, calculates outer zone terrain corrections.

Fugro National provides DMA with schedules showing the valleys with the highest priorities. Fugro National also recommended locations for the profiles in the FY 79 studies within the constraints that they should follow existing roads or trails. Any required inner zone terrain corrections are calculated by Fugro National prior to making geologic interpretations.

TABLE OF CONTENTS

	<u>Page</u>
FOREWORD . . . . .	i
1.0 <u>INTRODUCTION</u> . . . . .	1
1.1 Objective . . . . .	1
1.2 Location . . . . .	1
1.3 Scope of Work . . . . .	1
2.0 <u>GRAVITY DATA REDUCTION</u> . . . . .	5
3.0 <u>GEOLOGIC SUMMARY</u> . . . . .	7
4.0 <u>INTERPRETATION</u> . . . . .	9
4.1 Regional - Residual Separation . . . . .	9
4.2 Density Selection . . . . .	9
4.3 Modeling . . . . .	10
5.0 <u>CONCLUSIONS</u> . . . . .	17
BIBLIOGRAPHY . . . . .	18

LIST OF APPENDICES

APPENDIX

- A1.0 General Principles of the Gravity Exploration Method
- A2.0 List of Gravity Data

LIST OF FIGURES

Figure  
Number

- 1 Location Map - Dry Lake Valley, Nevada . . . . . 2
- 2 Topographic Setting - Dry Lake Valley,  
Nevada . . . . . 3
- 3 Complete Bouguer Anomaly Contours . . . . . 6
- 4 Velocity Profile from Seismic Refraction  
Line DL-DS-1 . . . . . 11
- 5 Velocity Profile from Seismic Refraction  
Line DL-DS-2 . . . . . 12
- 6 Interpreted Depth to Bedrock Map . . . . . 15
- 7 Cross Sectional View, Profile AA' . . . . . 16

## 1.0 INTRODUCTION

### 1.1 OBJECTIVES

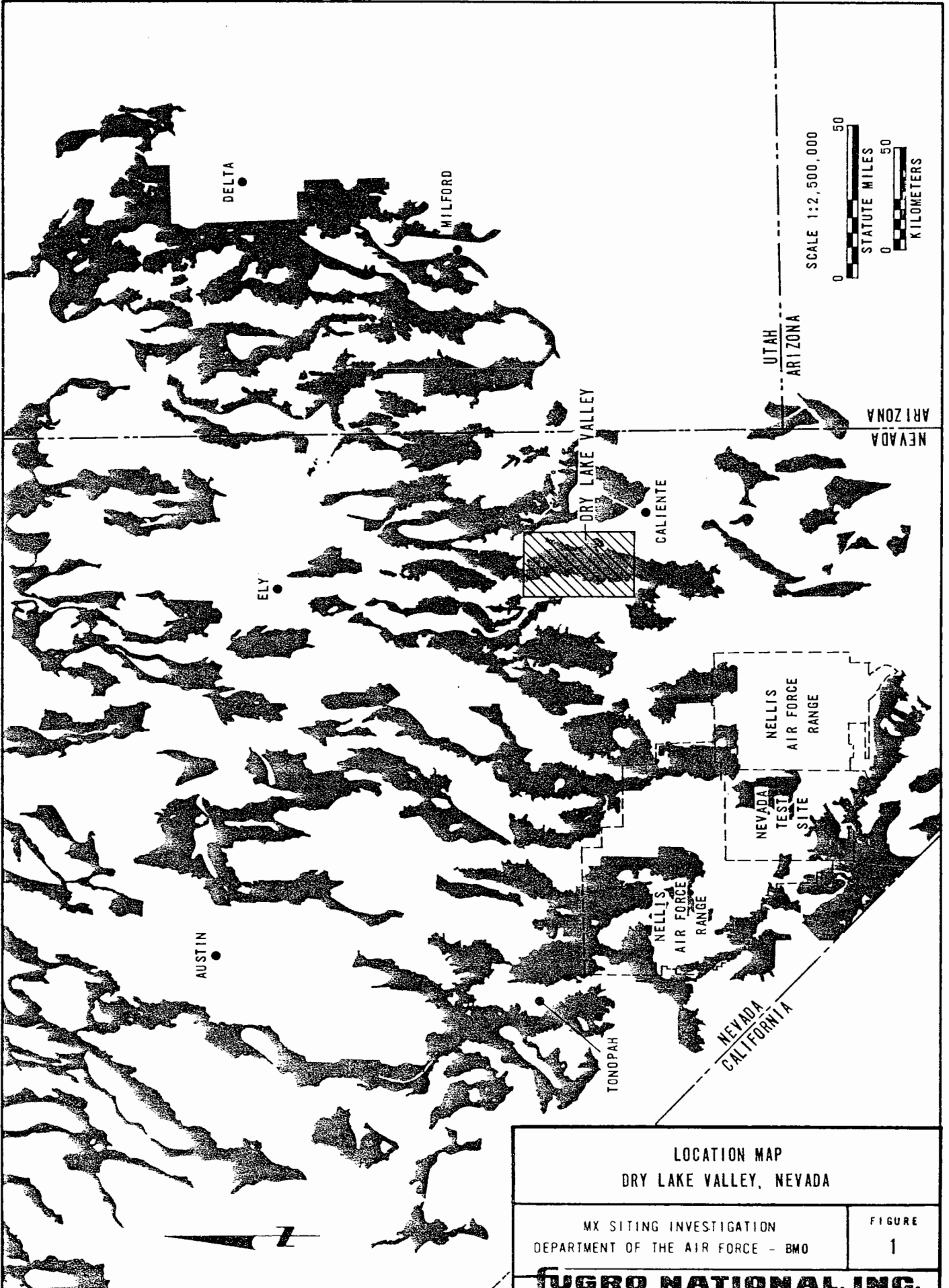
Measurements of the gravitational field were made in Dry Lake Valley for the purpose of estimating the overall shape of the structural basin and the thickness of alluvial fill in the basin. These estimates are expected to be useful to the Nuclear Survivability and Hardness (NH&S) community in modeling dynamic response to nuclear detonations and to geohydrologists in evaluating ground water regimes.

### 1.2 LOCATION

Dry Lake Valley is located in central Lincoln County, Nevada, approximately 106 miles (170 km) NNE of Las Vegas (see Figure 1). The portion of Dry Lake Valley included in this study is approximately 40 miles (65 km) long and 13 miles (22 km) wide, comprising an area of approximately 520 square miles (1347 km<sup>2</sup>). As shown in Figure 2, Dry Lake Valley is bounded by mountain ranges on three sides and is open to Delamar Valley on the south. U.S. Highway 93, which is the only paved road in the vicinity, crosses the southern end of the valley.

### 1.3 SCOPE OF STUDY

The Defense Mapping Agency Hydrographic-Topographic Center/Geodetic Survey Squadron (DMAHTC/GSS) obtained gravitational field measurements at 1069 stations in and around Dry Lake Valley during June and July, 1977. Approximately one-half of these stations were distributed throughout the valley with about 1 mile (1.6 km) between stations. The rest of the stations were

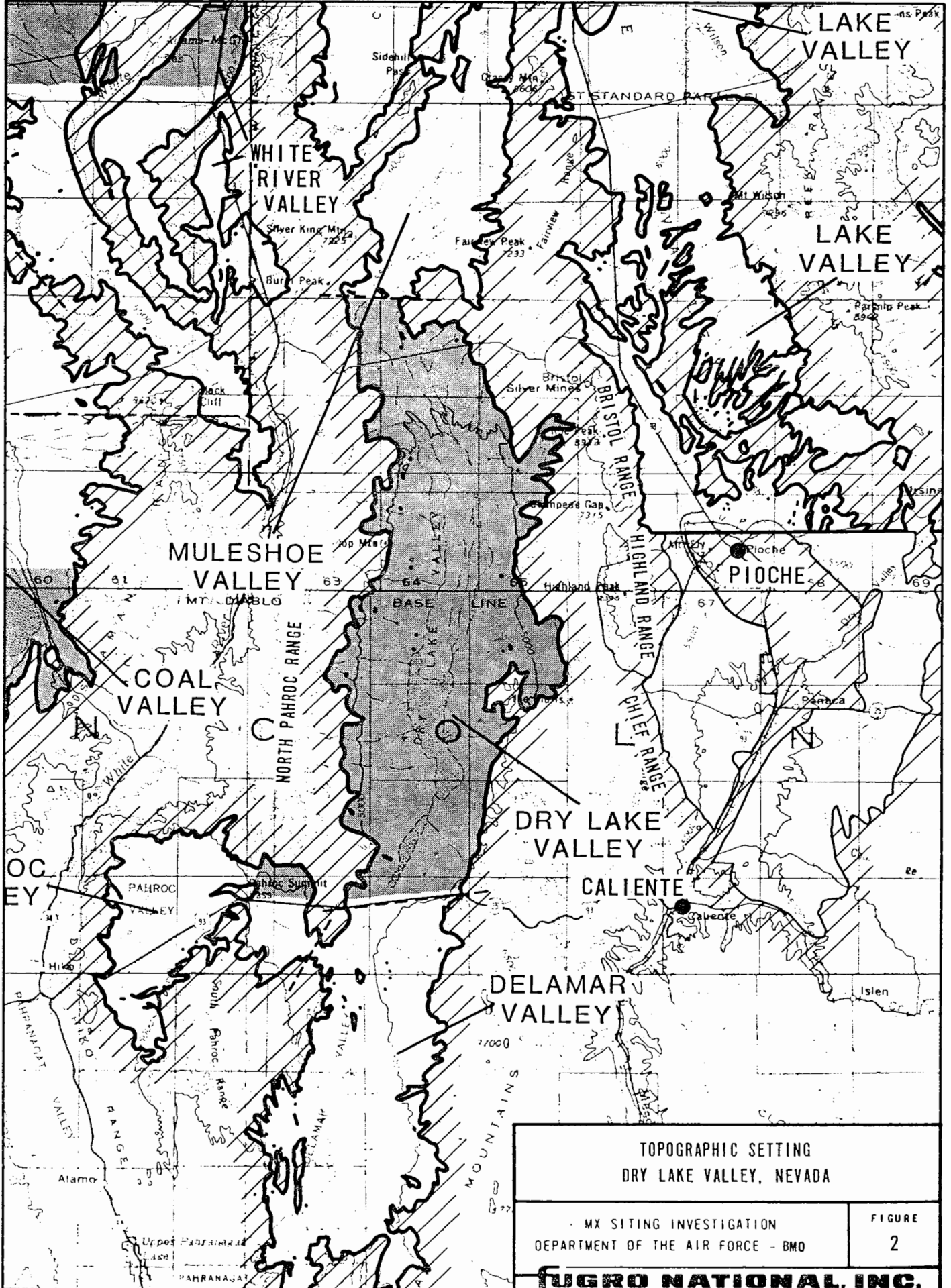


LOCATION MAP  
 DRY LAKE VALLEY, NEVADA

MX SITING INVESTIGATION  
 DEPARTMENT OF THE AIR FORCE - BMO

FIGURE  
 1

**FUGRO NATIONAL, INC.**





placed either at 1/4-mile (0.4 km) intervals along roads and trails or around the perimeter of the valley on rock outcrops. The station locations are shown on Figures 3 and 6. Station elevations were determined within a tolerance of 5 feet (1.5 m). With this elevation tolerance, the gravity precision is no smaller than 0.3 milligals. The principal facts for all stations are listed in Appendix A2.0.

In addition to the gravity data in Dry Lake Valley, information from two relatively long seismic refraction lines in the northern part of the valley was available. These seismic lines were recorded during Characterization studies by Fugro National in June, 1977 (FN-TR-26e).

## 2.0 GRAVITY DATA REDUCTION

DMAHTC/GSS obtained the basic observations and reduced them to simple Bouguer Anomalies (SBA) for each station as described in Appendix A1.0. Up to three levels of terrain corrections were applied to convert the SBA to the complete Bouguer Anomaly (CBA). First, the Defense Mapping Agency Aerospace Center (DMAAC), St. Louis, used its library of digitized terrain data and a computer program to calculate corrections for all stations to account for terrain to 104 miles (167 km) from the station. The second level of terrain corrections was necessary because the computer program has limitations in accounting for terrain effects near the stations. This made it necessary, for some stations, to use a ring template to calculate the effect of terrain within approximately 3000 feet of these stations. The third level of terrain corrections was applied to those stations where 10 feet or more of relief was observed within 130 feet of the station. For these stations, elevation differences were measured in the field at a distance of 130 feet along six directions from the stations. These data were used to calculate the effect of the very near relief. Figure 3 is a contour map of the CBA which also shows the locations of the gravity stations and approximate rock outcrop line at the edges of the valley.

### 3.0 GEOLOGIC SUMMARY

The structural geologic setting, major rock types, and depositional regime of the valley-fill material are important considerations in the interpretation of the gravitational field data. Dry Lake Valley exhibits typical basin and range structure; high angle, normal basement faults, oriented north-south, probably border the North Pahroc Range on the west, and the Bristol, Highland, and Chief ranges on the east. The area between was faulted downward. Stewart, and Carlson (1978) indicate that a north-south trending fault on the eastern side of the valley cuts through the surface alluvium. This is further substantiated by Shawe (1965) and Fugro National, Inc. (1978, FN-TR-26E). Shawe (1965) also mentions transverse faults, near the Dry Lake area, occurring at large angles to the major north-south structural trends.

The outcrops in the mountains on the western side of the valley are predominantly Tertiary ash flow tuffs with some Paleozoic carbonate rocks. Conversely, the eastern mountains are composed primarily of Paleozoic carbonates with minor amounts of Tertiary ash flow tuffs (Stewart, and Carlson, 1978). The Paleozoic carbonate rocks in Nevada are generally reported to be relatively high density, on the order of  $2.8 \text{ g/cm}^3$ . The volcanic rocks in Nevada are highly variable in density. In general, their density ranges fall between  $2.2$  and  $2.5 \text{ g/cm}^3$ .

At the surface, the total valley fill is composed of young and intermediate age alluvial fan deposits (72 percent of surface

area), fluvial and stream terrace deposits (16 percent), playa and older lacustrine deposits (six percent), and undifferentiated fluvial, alluvial, and lacustrine deposits (six percent), (Fugro National, Inc. 1978, FN-TR-26e). Except for younger stream channel and playa deposits, the valley fill is late Tertiary and early Quaternary in age. Eakin (1963) describes, the valley fill as consisting of unconsolidated to partly consolidated silt, sand, and gravel derived from adjacent highlands, and including some rocks of volcanic origin.

#### 4.0 INTERPRETATION

The gravitational effect of the light weight material filling the Dry Lake structural basin dominates the CBA map in Figure 3. The CBA values become increasingly negative toward the center of the valley.

##### 4.1 REGIONAL-RESIDUAL SEPARATION

A fundamental step in gravity interpretation is evaluation of the portion of the CBA which represents the geologic feature of interest, in this case, the relatively low density valley fill. The part of the gravity field which is of interest is called the "residual" anomaly. The magnitude of the residual anomaly is a product of: 1) the thickness of alluvial fill; and 2) the contrast in density between the fill and bedrock.

The residual anomaly was isolated by first estimating the way the CBA field would have appeared if there had been no valley fill present. This estimated field is called the "regional" gravity. For this study, the regional field was calculated by fitting (by least squares) a second-order polynomial surface to the CBA values at the bedrock stations around the valley. The regional field was then subtracted from the CBA. The remainder was the residual anomaly.

##### 4.2 DENSITY SELECTION

To calculate the thickness of alluvium which caused the residual anomaly, it is necessary to know the density contrast between the alluvial fill and the bedrock. Only very generalized

information on densities is available, and, for calculation, they were treated as if they are constant throughout the valley. Upon consideration of these factors, it becomes clear that the thickness of alluvium (or depth to rock) interpretation is a coarse approximation.

Interpretations from the two seismic refraction lines in the northern end of the valley were used to constrain the selection of the density contrast. These interpretations are shown in Figures 4 and 5. The highest velocities in the profiles are on the order of 15,000 fps (4572 mps). These were interpreted to represent carbonate bedrock. By "trial and error" calculations, it was found that use of a density contrast of  $0.45 \text{ g/cm}^3$  caused the depth calculated from the gravity to approximately agree with the seismic interpretation.

The density measured for samples of alluvial fill obtained from shallow borings in Dry Lake Valley range from  $2.1 \text{ g/cm}^3$  to  $2.4 \text{ g/cm}^3$ . Published values for carbonate rocks typically range between  $2.6$  and  $2.8 \text{ g/cm}^3$ . The contrast of  $0.45 \text{ g/cm}^3$  appears to be reasonable in light of these typical values. This contrast should be considered a maximum, because the average density of the alluvial materials will become greater as the depth of burial increases.

#### 4.3 MODELING

For computation and contouring, values for surface elevations and CBA were interpolated at the nodes of a regular 1 mile (1.6 km) grid over the valley. Portions of the grid, where

there were insufficient station data to establish reliable nodal values, were masked out.

Bedrock depths at each node were computed by iterative computer programs that considered the gravity effect from the model at the other nodes as well as beneath the node in question. Contours showing the interpreted depth to bedrock are displayed in Figure 6. The CBA contours in Figure 3 show linear gradients along both sides of the valley. These gradients range from 10 to 14 milligals per mile. These gradients are thought to be produced by large, steep bedrock faults. The second vertical derivative of the CBA field was calculated to guide the placement of the faults shown in Figure 6. Since the zero contour of the second vertical derivative marks the steepest part of the input CBA field, the faults were placed along the zero contour. This places the trace of the eastern boundary fault slightly more than 1 mile (1.6 km) west of surface cracks in the alluvium mapped as a fault along the eastern boundary of Dry Lake Valley.

The two faults interpreted to cross the valley are not so clearly defined as the boundary faults. They are positioned where changes in strike of the major gravity gradients and the axis of the valley occur. There is significant change in bedrock elevation associated with the northern transverse fault, but little, if any vertical change across the southern fault.

A cross-section view across the central part of the valley (Section AA', Figures 3 and 6) is shown in Figure 7. The top

part of the figure shows the shape of the CBA profile along this section. The lower part shows the surface profile and the interpreted bedrock profile.



## 5.0 CONCLUSIONS

The interpretation of the gravity survey of Dry Lake Valley indicates that there are major range bounding normal faults on both sides of the valley. The graben between the boundary faults is calculated to be on the order of 10,000 feet deep. The northern third of the valley is substantially shallower than the southern part.

There is a large, well defined negative gravity anomaly associated with Dry Lake Valley. An average density contrast of  $0.45 \text{ g/cm}^3$  between the alluvium and bedrock was used to calculate the thickness of alluvium which would create such an anomaly. If a smaller contrast had been used, the calculated thickness would have been greater. Conversely, if a larger contrast had been used, the calculated thickness would have been smaller.

Additional modeling with other density contrasts was not justified because so little is known about the actual density distribution in and around the valley.

If future studies acquire better density data or actual thicknesses of alluvium in relatively deep parts of the basin, the gravity interpretation can be refined and made more accurate.

BIBLIOGRAPHY

- Eakin, T.E., 1963, Ground Water Appraisal of Dry Lake and Delamar Valleys: U.S. Geol. Survey, Ground Water Resources - Reconnaissance Series, Report 16, 24 p.
- Fugro National, Inc. 1978, MX siting investigation geotechnical summary prime characterization sites, Great Basin Candidate Siting Province Report, 70 p., 4 appendices (FN-TR-26e).
- Shawe, D.R., 1965, Strike-slip control of basin-range structure indicated by historical faults in Western Nevada: Geological Society of America Bulletin, Vol. 76, pp. 1361-1378.
- Stewart, J.H., and Carlson, J.E., 1978, Geologic Map of Nevada: U.S. Geol. Survey, 1:500,000.

APPENDIX A1.0

GENERAL PRINCIPLES OF THE  
GRAVITY EXPLORATION METHOD

A1.0 GENERAL PRINCIPLES OF THE GRAVITY  
EXPLORATION METHOD

A1.1 GENERAL

A gravity survey involves measurement of differences in the gravitational field between various points on the earth's surface. The gravitational field values being measured are the same as those influencing all objects on the surface of the earth. They are generally associated with the force which causes a 1 gm mass to be accelerated at  $980 \text{ cm/sec}^2$ . This force is normally referred to as a 1 g force.

Even though in many applications the gravitational field at the earth's surface is assumed to be constant, small but distinguishable differences in gravity occur from point to point. In a gravity survey, the variations are measured in terms of milligals. A milligal is equal to  $0.001 \text{ cm/second}^2$  or  $0.00000102 \text{ g}$ . The differences in gravity are caused by geometrical effects, such as differences in elevation and latitude, and by lateral variations in density within the earth. The lateral density variations are a result of changes in geologic conditions. For measurements at the surface of the earth, the largest factor influencing the pull of gravity is the density of all materials between the center of the earth and the point of measurement.

To detect changes produced by differing geological conditions, it is necessary to detect differences in the gravitational field as small as a few milligals. To recognize changes due to

geological conditions, the measurements are "corrected" to account for changes due to differences in elevation and latitude.

Given this background, the basic concept of the gravitational exploration method, the anomaly, can be introduced. If, instead of being an oblate spheroid characterized by complex density variations, the earth were made up of concentric, homogeneous shells, the gravitational field would be the same at all points on the surface of the earth. The complexities in the earth's shape and material distribution are the reason that the pull of gravity is not the same from place to place. A difference in gravity between two points which is not caused by the effects of known geometrical differences, such as in elevation, latitude, and surrounding terrain, is referred to as an "anomaly."

An anomaly reflects lateral differences in material densities. The gravitational attraction is smaller at a place underlain by relatively low density material than it is at a place underlain by a relatively high density material. The term "negative gravity anomaly" describes a situation in which the pull of gravity within a prescribed area is small compared to the area surrounding it. Low-density alluvial deposits in basins such as those in the Nevada-Utah region produce negative gravity anomalies in relation to the gravity values in the surrounding mountains which are formed by more dense rocks.

The objective of gravity exploration is to deduce the variations in geologic conditions that produce the gravity anomalies identified during a gravity survey.

## A1.2 INSTRUMENTS

The sensing element of a LaCoste and Romberg gravimeter is a mass suspended by a zero-length spring. Deflections of the mass from a null position are proportional to changes in gravitational attraction. These instruments are sealed and compensated for atmospheric pressure changes. They are maintained at a constant temperature by an internal heater element and thermostat. The absolute value of gravity is not measured directly by a gravimeter. It measures relative values of gravity between one point and the next. Gravitational differences as small as 0.01 milligal can be measured.

## A1.3 FIELD PROCEDURES

The gravimeter readings were calibrated in terms of absolute gravity by taking readings twice daily at nearby USGS gravity base stations. Gravimeter readings fluctuate because of small time-related deviations due to the effect of earth tides and instrument drift. Field readings were corrected to account for these deviations. The magnitude of the tidal correction was calculated using an equation suggested by Goguel (1954):

$$C = P + N \cos \phi (\cos \phi + \sin \phi) + S \cos \phi (\cos \phi - \sin \phi)$$

where C is the tidal correction factor, P, N, and S are time-related variables, and  $\phi$  is the latitude of the observation point. Tables giving the values of P, N, and S are published annually by the European Association of Exploration Geophysicists.

The meter drift correction was based on readings taken at a designated base station at the start and end of each day. Any difference between these two readings after they were corrected for tidal effects was considered to have been the result of instrumental drift. It was assumed that this drift occurred at a uniform rate between the two readings. Corrections for drift were typically only a few hundredths of a milligal. Readings corrected for tidal effects and instrumental drift represented the observed gravity at each station. The observed gravity values represent the total gravitational pull of the entire earth at the measurement stations.

#### A1.4 DATA REDUCTION

Several corrections or reductions are made to the observed gravity to isolate the portion of the gravitational pull which is due to the crustal and near-surface materials. The gravity remaining after these reductions is called the "Bouguer Anomaly." Bouguer Anomaly values are the basis for geologic interpretation. To obtain the Bouguer Anomaly, the observed gravity is adjusted to the value it would have had if it had been measured at the geoid, a theoretically defined surface which approximates the surface of mean sea level. The difference between the "adjusted" observed gravity and the gravity at the geoid calculated for a theoretically homogeneous earth is the Bouguer Anomaly.

Four separate reductions, to account for four geometrical effects, are made to the observed gravity at each station to arrive at its Bouguer Anomaly value.

a. Free-Air Effect: Gravitational attraction varies inversely as the square of the distance from the center of the earth. Thus corrections must be applied for elevation. Observed gravity levels are corrected for elevation using the normal vertical gradient of:

$$FA = -0.09406 \text{ mg/ft } (-0.3086 \text{ milligals/meter})$$

where FA is the free-air effect (the rate of change of gravity with distance from the center of the earth). The free-air correction is positive in sign since the correction is opposite the effect.

b. Bouguer Effect: Like the free-air effect, the Bouguer effect is a function of the elevation of the station, but it considers the influence of a slab of earth materials between the observation point on the surface of the earth and the corresponding point on the geoid (sea level). Normal practice, which is to assume that the density of the slab is 2.67 grams per cubic centimeter was followed in these studies. The Bouguer correction ( $B_C$ ), which is opposite in sign to the free-air correction, was defined according to the following formula.

$$B_C = 0.01276 (2.67) h_f \text{ (milligals per foot)}$$

$$B_C = 0.04185 (2.67) h_m \text{ (milligals per meter)}$$

where  $h_f$  is the height above sea level in feet and  $h_m$  is the height in meters.



c. Latitude Effect: Points at different latitudes will have different "gravities" for two reasons. The earth (and the geoid) is spheroidal, or flattened at the poles. Since points at higher latitudes are closer to the center of the earth than points near the equator, the gravity at the higher latitudes is larger. As the earth spins, the centrifugal acceleration causes a slight decrease in gravity. At the higher latitudes where the earth's radii are smaller, the centrifugal acceleration diminishes. The gravity formula for the Geodetic Reference System, 1967, gives the theoretical value of gravity at the geoid as a function of latitude. It is:

$$g = 978.0381 (1 + 0.0053204 \sin^2 \phi - 0.0000058 \sin^2 2\phi) \text{ gals}$$

where  $g$  is the theoretical acceleration of gravity and  $\phi$  is the latitude in degrees. The positive term accounts for the spheroidal shape of the earth. The negative term adjusts for the centrifugal acceleration.

The previous two corrections (free air and Bouguer) have adjusted the observed gravity to the value it would have had at the geoid (sea level). The theoretical value at the geoid for the latitude of the station is then subtracted from the adjusted observed gravity. The remainder is called the Simple Bouguer Anomaly (SBA). Most of this gravity represents the effect of material beneath the station, but part of it may be due to irregularities in terrain (upper part of the Bouguer slab) away from the station.

d. Terrain Effect: Topographic relief around the station has a negative effect on the gravitational force at the station. A nearby hill has upward gravitational pull and a nearby valley contributes less downward attraction than a nearby material would have. Therefore, the corrections are always positive. Corrections are made to the SBA when the terrain effects were 0.1 milligal or larger. Terrain corrected Bouguer values are called the Complete Bouguer Anomaly (CBA). When the CBA is obtained, the reduction of gravity at individual measurement points (stations) is complete.

#### A1.5 INTERPRETATION

The first step in interpretation is to separate the portion of the CBA that might be caused by the lightweight, basin-fill material overlying the heavier bedrock material which forms the surrounding mountains and presumably the basin floor. Since the valley-fill sediments are absent at the stations read in the mountains, the CBA values at these bedrock stations are used as the basis for constructing a regional field over the valley. A regional field is an estimation of the values the CBA would have had if the light weight sediments (the anomaly) had not been there.

The difference between the CBA and the regional field is called the "residual" field or residual anomaly. The residual field is the interpreter's estimation of the gravitational effect of the geologic anomaly. The zero value of the residual anomaly is not exactly at the rock outcrop line but at some

distance on the "rock" side of the contact. The reason for this is found in the explanation of the terrain effect. There is a component of gravitational attraction from material which is not directly beneath a point.

If the "regional" is well chosen, the magnitude of the residual anomaly is a function of the thickness of the anomalous (fill) material and the density contrast. The density contrast is the difference in density between the alluvial and bedrock material. If this contrast were known, an accurate calculation of the thickness could be made. In most cases, the densities are not well known and they also vary within the study area. In these cases, it is necessary to use typical densities for materials similar to those in the study area.

If the selected average density contrast is smaller than the actual density contrast, the computed depth to bedrock will be greater than the actual depth and vice-versa. The computed depth is inversely proportional to the density contrast. A ten percent error in density contrast produces a ten percent error in computed depth. An iterative computer program is used to calculate a subsurface model which will yield a gravitational field to match (approximately) the residual gravity anomaly.

APPENDIX A2.0

LISTS OF GRAVITY DATA

DRY LAKE VALLEY GRAVITY STATIONS

STATION IDENT.	LAT. DEG	LONG. MIN	ELEV. +CODE	TER-COR. IN/OUT	NORTH UTM	EAST UTM	ORSV GRAV	THEO GRAV	FAA	CBA +1000
DL1	+38	767	1145234	5377Y	0	127422193	68649148289200331	98562	80349	
DL2	+38	771	1145117	5225Y	0	107422204	68820149343200338	98179	80465	
DL3	+38	793	11450155	1591T	0	103422249	68968149801200370	97983	80490	
DL4	+38	833	11449075	1509T	0	119422323	68993149894200428	97943	80493	
DL5	+38	808	1144852	5634Y	0	198422282	69206147022200391	99654	80636	
DL6	+38	807	1144744	5279B	0	111422284	69364149231200390	98522	80628	
DL7	+38	798	1144630	5342B	0	114422271	69530148685200377	98583	80477	
DL8	+38	751	1144505	5548Y	0	114422189	69715147527200308	99434	80625	
DL9	+38	861	1144550	5665Y	0	115422391	69645146910200469	99757	80551	
DL10	+38	880	1144672	5600C	0	112422421	69465147333200497	99540	80552	
DL11	+38	892	1144773	5584Y	0	111422440	69317147360200515	99399	80465	
DL12	+38	899	1144898	5251C	0	106422449	69135149690200525	98584	80780	
DL13	+38	914	11449995	1860T	0	133422473	68986149923200547	98182	80627	
DL14	+38	869	1145118	5304Y	0	110422386	68814148775200480	98212	80231	
DL15	+38	848	1145199	5385C	0	110422344	68697149051200450	99286	81029	
DL16	+38	929	1145195	5438Y	0	122422494	68699148263200569	98873	80447	
DL17	+38	955	1145116	5354Y	0	126422545	68814148625200607	98406	80271	
DL18	+38	939	1144934	5585Y	66	152422521	69080147274200584	99253	80423	
DL19	+38	966	1144837	5469Y	0	94422575	69221148317200623	99165	80606	
DL20	+38	944	1144669	5826Y	0	131422540	694671459312005911	100172	80432	
DL21	+38	946	1144558	5934Y	0	175422547	696291451992005941	100454	80390	
DL22	+38	991	1144572	5847Y	0	119422630	696071459112006591	100281	80457	
DL23	+38	1024	1144658	5628Y	0	97422688	69480147027200708	99287	80188	
DL24	+38	1013	1144752	5449Y	0	128422665	69343148410200691	99001	80544	
DL25	+38	1034	1144876	5632Y	47	112422699	69161146677200723	99159	80108	
DL26	+38	1003	1144982	5225Y	0	129422638	69007149752200677	98249	80557	
DL27	+38	1011	1145128	5424Y	0	123422648	68794148377200689	98735	80359	
DL28	+38	1012	1145223	5560Y	0	137422647	68655147812200690	99637	80743	
DL30	+38	1104	1145069	5445Y	0	128422822	68676148536200825	98958	80514	
DL31	+38	1090	1144957	5271Y	0	126422800	69040149015200805	97818	79966	
DL32	+38	1074	1144762	5697Y	0	114422777	69325146461200781	99297	79961	
DL33	+38	1084	1144672	5534Y	0	101422799	69456147860200795	99147	80373	
DL34	+38	1079	1144570	5711Y	0	104422793	69606147210200788	100171	80796	
DL36	+38	55	1145100	5153Y	0	158420881	68876149919199290	99124	81707	
DL38	+38	80	1145084	5163C	0	113420928	68898149925199327	99188	81691	
DL39	+38	71	1145059	5090C	0	160420912	68935150360199313	98949	81748	
DL40	+38	63	1145033	5043C	0	124420898	68973150501199302	98659	81533	
DL41	+38	55	1145006	5000C	0	116420884	69013150512199290	98277	81339	
DL42	+38	46	1144980	4962C	0	113420868	69052150866199277	98286	81475	
DL43	+38	38	1144954	4922C	0	108420850	69090151582199265	98638	81958	
DL44	+38	30	1144928	4925R	0	105420840	69128151714199253	98610	82117	
DL45	+38	21	1144902	4853S	0	108420825	69167152018199240	98496	82035	
DL46	+38	13	1144876	4848S	0	111420811	69202151897199228	98293	81869	
DL47	+38	4	1144850	4842S	0	103420795	69244151647199216	98000	81588	
DL48	+38	63	1144883	4874Y	0	104420903	69193151845199302	98412	81893	
DL49	+38	125	1144937	4942C	0	98421016	69111151385199392	98502	81744	
DL50	+38	134	1145032	5134Y	0	99421029	68972150049199405	98960	81548	
DL51	+38	169	1145109	5192Y	0	113421091	68858150059199456	99465	81870	
DL52	+38	211	1145229	5257B	0	119421165	68680149577199518	99534	81723	
DL53	+38	205	1145198	5229B	0	115421155	68726149828199509	99529	81810	
DL54	+38	203	1145168	5203Y	0	119421152	68770150080199506	99540	81913	
DL55	+38	215	1145141	5178B	0	106421175	68809150344199523	99552	81997	
DL56	+38	219	1145114	5147R	0	121421184	68848150510199530	99419	81985	
DL57	+38	225	1145088	5122B	0	102421196	68686150606199538	99273	81905	
DL58	+38	271	1145071	5097B	0	07422208	68025150000199547	98000	81728	

STATION IDENT.	LAT. DEG	LONG. MIN	ELEV. +CODE	TER-COR. IN/OUT	NORTH UTM	EAST UTM	DRSV GRAV	THEC GRAV	FAA	CBA +1000
DL59	+38	237	1145034	5072B	0	98421220	68964150581	199556	98758	81556
DL60	+38	243	1145007	5050B	0	95421232	69004150646	199565	98607	81478
DL61	+38	249	1144979	5026B	0	96421244	69044150676	199573	98403	81356
DL62	+38	257	1144942	5002Y	0	92421260	69098150725	199585	98214	81245
DL63	+38	195	1145003	5050B	0	100421143	69012150607	199495	98638	81514
DL64	+38	214	1144897	4957Y	0	93421182	69166151136	199523	98264	81450
DL65	+38	166	1144857	4912Y	0	99421094	69226151595	199452	98370	81715
DL66	+38	113	1144796	4885S	0	99420998	69318151073	199375	97670	81108
DL67	+38	23	1144780	4846S	0	96420833	69345150793	199243	97155	80723
DL68	+38	9	1144672	4834S	0	97420810	69504150257	199223	96527	80137
DL69	+38	90	1144719	4865S	0	97420959	69432150340	199341	96783	80287
DL70	+38	1	1144558	4823S	0	107420800	69671150326	199211	96504	80161
DL71	+38	21	1144567	4828S	0	110420836	69657150394	199240	96590	80233
DL72	+38	42	1144577	4836S	0	106420875	69642150444	199271	96684	80296
DL73	+38	62	1144587	4842S	0	103420911	69626150454	199300	96721	80310
DL74	+38	83	1144597	4847S	0	104420950	69610150463	199330	96747	80319
DL75	+38	103	1144607	4855S	0	104420987	69595150422	199360	96752	80297
DL76	+38	124	1144617	4867S	0	107421025	69579150336	199391	96749	80256
DL77	+38	144	1144628	4878S	0	106421062	69562150243	199420	96730	80199
DL78	+38	163	1144643	4887S	0	109421096	69540150164	199448	96708	80140
DL79	+38	181	1144657	4897S	0	102421129	69518150116	199474	96728	80127
DL80	+38	200	1144672	4904S	0	99421164	69496150098	199502	96748	80120
DL81	+38	219	1144686	4911U	0	95421198	69474150104	199530	96791	80136
DL82	+38	237	1144705	4922S	0	96421231	69446150154	199556	96918	80227
DL83	+38	256	1144719	4930S	0	96421266	69424150188	199584	97001	80282
DL84	+38	275	1144732	4937S	0	94421300	69404150210	199612	97060	80316
DL85	+38	294	1144747	4945S	0	95421335	69382150259	199639	97157	80386
DL86	+38	313	1144760	4957S	0	92421370	69362150309	199667	97293	80478
DL87	+38	334	1144771	4966S	0	90421408	69345150356	199698	97367	80540
DL88	+38	355	1144782	4972U	0	91421447	69328150421	199729	97480	80613
DL89	+38	330	1144821	4968Y	0	90421399	69272150588	199692	97549	80795
DL90	+38	315	1144846	4966S	0	91421370	69236150705	199670	97770	80923
DL91	+38	297	1144877	4958U	0	94421336	69191151004	199644	98020	81204
DL92	+38	284	1144900	4972S	0	92421311	69158151034	199625	98201	81335
DL93	+38	270	1144922	4989C	0	93421284	69127150864	199604	98212	81289
DL94	+38	174	1144758	4901S	0	98421113	69371150658	199464	97317	80699
DL95	+38	251	1144814	4937S	0	94421253	69286150796	199577	97682	80937
DL96	+38	93	1144521	4844S	0	114420971	69721150516	199345	96757	80350
DL97	+38	164	1144525	4859Y	0	115421102	69712150452	199449	96824	80333
DL98	+38	239	1144594	4900Y	0	109421239	69606150093	199559	96648	80044
DL99	+38	308	1144657	4935Y	0	102421364	69513150048	199660	96832	80102
DL100	+38	349	1144561	4978C	0	113421443	69651149866	199720	96988	80122
DL101	+38	365	1144756	4952S	0	97421466	69365150448	199743	97308	80515
DL102	+38	374	1144730	4971S	0	96421483	69403150179	199756	97204	80346
DL103	+38	385	1144702	4967U	0	98421505	69444150096	199773	97068	80225
DL104	+38	396	1144682	4970S	0	101421526	69472150029	199788	97013	80152
DL105	+38	406	1144661	4982Y	0	100421545	69503149944	199803	97026	80134
DL106	+38	419	1144635	4994S	0	106421570	69540149821	199822	96997	80070
DL107	+38	432	1144611	5009S	0	108421595	69574149711	199841	97010	80034
DL108	+38	445	1144584	5023S	0	109421620	69613149604	199860	97016	79993
DL109	+38	455	1144558	5037C	0	113421639	69651149540	199875	97069	80002
DL110	+38	467	1144532	5055C	0	110421662	69688149487	199892	97262	80096
DL111	+38	481	1144504	5092C	0	123421689	69729149464	199913	97473	80228
DL112	+38	379	1144792	4982S	0	91421491	69312150485	199764	97607	80706
DL113	+38	394	1144813	4988S	0	92421518	69281150570	199786	97726	80805
DL114	+38	413	1144830	5000S	0	90421552	69255150649	199813	97390	80927
DL115	+38	430	1144848	5016S	0	89421587	69229150728	199838	97576	81052

DRY LAKE VALLEY GRAVITY STATIONS

STATION IDENT.	LAT. DEG	LONG. MIN	ELEV. +CODE	TEMP. IN/OUT	NORTH UTM	EAST UTM	OBSV GRAV	THEO GRAV	FAA	GRA +1000
DL116	+38	448	1144864	5020S	0	91421616	69204150615199865	97993	80962	
DL117	+38	468	1144876	5027S	0	94421652	69185150481199894	97896	80845	
DL118	+38	488	1144883	5033S	0	92421689	69174150286199923	97729	80655	
DL119	+38	510	1144893	5041S	0	90421729	69159150142199955	97628	80524	
DL120	+38	528	1144911	5051S	0	90421762	69132150049199982	97602	80465	
DL121	+38	548	1144918	5060S	0	91421799	69121149979200011	97588	80421	
DL122	+38	568	1144932	5063S	0	95421835	69099149920200040	97528	80354	
DL123	+38	586	1144947	5075S	0	92421868	69077149851200066	97546	80329	
DL124	+38	607	1144957	5090S	0	92421907	69061149870200098	97676	80407	
DL125	+38	629	1144962	5101U	0	94421947	69053149922200130	97798	80494	
DL126	+38	700	1145232	5300Y	0	125422069	68655149396200234	99042	81091	
DL127	+38	676	1145134	5160Y	0	106422028	68799149778200198	98141	80648	
DL128	+38	603	1145241	5243Y	0	125421890	68646150020200091	99272	81514	
DL129	+38	601	1145151	5170Y	0	103421889	68778150065200088	98635	81104	
DL130	+38	537	1145168	5174Y	0	120421770	68756150257199995	98948	81421	
DL131	+38	473	1145212	5278Y	0	116421650	68694149893199902	99664	81779	
DL132	+38	504	1145112	5124Y	0	133421711	68839150577199947	98853	81509	
DL133	+38	443	1145141	5732Y	0	242421597	687991469751998571	101065	81757	
DL134	+38	415	1145212	5297Y	0	120421543	68696149921199816	99956	82009	
DL135	+38	342	1145223	5248Y	0	128421407	68683150165199709	99845	82072	
DL136	+38	263	1145191	5186Y	0	124421262	68734150350199594	99563	81999	
DL137	+38	310	1145107	5120B	0	125421352	68854150770199663	99292	81954	
DL138	+38	325	1145018	5038C	0	101421383	68984150952199684	98681	81598	
DL139	+38	350	1144910	4985S	0	93421433	69141151038199721	98231	81321	
DL140	+38	420	1144943	5008Y	0	97421561	69090151205199823	98511	81527	
DL141	+38	444	1145021	5032C	0	112421603	68974151110199859	98607	81556	
DL142	+38	495	1144956	5037S	0	97421699	69067150666199934	98136	81053	
DL143	+38	531	1145026	5070S	0	98421764	68963150334199986	98062	80868	
DL144	+38	619	1145034	5087U	0	106421926	68948150251200115	98010	80766	
DL145	+38	716	11450575	51401T	0	105422105	68910149637200257	97953	80527	
DL146	+38	685	1145003	5113Y	0	102422049	68990150026200212	97934	80597	
DL147	+38	738	1144967	5191Y	0	94422151	69128149720200289	98284	80673	
DL149	+38	575	1144812	5058S	0	94421652	69274149741200051	97291	80134	
DL150	+38	494	1144769	5018S	0	97421704	69341149750199932	97043	80025	
DL151	+38	445	1144720	4993S	0	97421615	69415149801199860	96930	79997	
DL152	+38	517	1144664	5057C	0	98421750	69493149377199966	97003	79853	
DL153	+38	597	1144702	5092B	0	101421897	69434149325200083	97164	79897	
DL154	+38	675	1144675	51801T	0	102422042	69470149210200197	97762	80177	
DL155	+38	735	1144663	5248B	0	104422153	69485149172200284	98277	80482	
DL156	+38	721	1144766	5171Y	0	106422124	69344149720200264	98121	80590	
DL157	+38	658	11447835	51161T	0	96422007	69313149705200172	97679	80326	
DL158	+38	692	11445615	52529T	0	108422078	69636149319200222	98534	80725	
DL159	+38	606	1144592	5167B	0	104421917	69595149195200096	97727	80208	
DL160	+38	526	1144553	5115C	0	106421771	69655149352149979	97511	80171	
DL161	+374502	+1143692	5539S	0	137418059	71010146367197022101492			82737	
DL163	+374574	+1143720	5485S	0	123418191	70956146514197127101009			82424	
DL165	+374617	+1143638	5495Y	0	149418273	71083146747197189101274			82661	
DL166	+374679	+1143674	5416Y	0	164418387	71028147710197280101494			83094	
DL167	+374677	+1143571	5558Y	0	152418387	71179146154197277101185			82381	
DL168	+374665	+1143445	5750S	0	165418370	71364145519197259102377			82930	
DL169	+374590	+1143417	6071S	0	220418232	71409143454197150103443			82957	
DL170	+374517	+1143436	5962S	13	176418096	71385143754197044102624			82676	
DL171	+374740	+1143456	5784Y	0	158418508	71342145463197369102533			82962	
DL172	+374745	+1143518	5722Y	0	144418515	71254145725197376102205			82832	
DL174	+374782	+1143562	5641S	0	155418581	71187145831197430101491			82406	
DL176	+374786	+1143275	5507S	0	176418600	71608147091197436101483			82677	
DL178	+374831	+1143227	5522S	0	174418680	71675146956107502101418			82755	

STATION IDENT.	LAT. DEG MIN	LONG. DEG MIN	ELEV. +CODE	TER-COR. IN/OUT	NORTH UTM	EAST UTM	OBSV GRAV	THEO GRAV	FAA	CBA +1000
DL179	+374819	+1143351	5657S	0	193418656	714951462981	197484102055	82953		
DL180	+374823	+1143422	5763S	0	178418663	713911456241	197490102370	82692		
DL181	+374880	+1143174	5433S	0	184418778	717521465311	197573100090	81743		
DL182	+374901	+1143356	5918Y	0	235418809	714841447061	197604102797	82849		
DL183	+374899	+1143476	5947Y	0	211418801	713081442861	197601102657	82585		
DL184	+374860	+1143578	5831Y	0	184418725	711601449551	197544102290	82587		
DL187	+374939	+1143289	5787Y	0	284418882	715801454741	197559102284	82828		
DL190	+374983	+1143524	6228S	0	290418955	712331428481	197723103728	82776		
DL191	+375013	+1143646	6067S	0	259419006	710531440021	197767103336	82902		
DL193	+375062	+1143555	6473S	34	346419100	711841414491	197639104535	82838		
DL199	+375099	+1143712	5904Y	0	297419162	709521451181	197893102792	82952		
DL200	+375114	+1143734	5827Y	0	297419189	709191456461	197915102572	82995		
DL202	+375214	+1143616	6513S	0	504419378	710871411311	198061104372	82662		
DL205	+38 9	+1144375	4830S	0	127420821	699391502441	199223 96477	80130		
DL206	+38 48	+1144470	4830S	0	117420890	697981504151	199280 96591	80234		
DL207	+38 78	+1144380	48442T	0	144420948	699281505451	199323 96812	80435		
DL208	+38 123	+1144454	4861Y	0	128421029	698181504131	199389 96770	80318		
DL209	+38 86	+1144286	4940C	0	137420967	700651502681	199335 97423	80711		
DL210	+38 41	+1144177	5100Y	0	152420887	702271499861	199270 98713	81470		
DL211	+38 19	+1143951	5582Y	0	229420855	705591466211	199238 99919	81109		
DL212	+38 57	+1143794	6296Y	0	433420931	707871428321	199293102797	81756		
DL213	+38 90	+1143900	5758Y	0	275420988	706301455091	199341100360	80996		
DL214	+38 108	+1144005	5445Y	0	207421017	704761476181	199367 99495	81131		
DL215	+38 81	+1144090	5249Y	0	177420964	703521489541	199328 99025	81299		
DL216	+38 81	+1144200	5075Y	0	155420960	701921500491	199328 98482	81328		
DL218	+38 148	+1143827	6150Y	0	414421098	707341431271	199426101583	81022		
DL219	+38 150	+1143918	5734B	0	262421098	706011456561	199429100193	80898		
DL220	+38 169	+1144090	5370Y	0	186421127	703481485901	199456 99672	81542		
DL221	+38 169	+1144200	5098Y	0	212421123	701871502271	199456 98750	81575		
DL222	+38 167	+1144310	4881Y	0	170421115	700271506161	199454 97097	80619		
DL223	+38 172	+1144388	48871T	0	133421122	699121501641	199461 96694	80159		
DL225	+38 199	+1144460	4905C	0	117421169	698061500291	199501 96689	80077		
DL226	+38 260	+1144366	49459I	0	129421284	698971499791	199590 96936	80196		
DL227	+38 279	+1144498	4947C	0	119421316	697471498661	199617 96805	80051		
DL228	+38 237	+1144273	4971Y	0	185421246	700781506501	199556 97876	81107		
DL229	+38 218	+1144127	5836Y	0	275421216	702921455981	199528100995	81365		
DL230	+38 199	+11440185	5020I	0	199421185	704521476641	199501 99945	81376		
DL231	+38 213	+1143936	5756Y	0	237421214	705721456281	199521100280	80665		
DL232	+38 240	+1143867	6008C	0	292421267	706711441821	199560101168	80966		
DL234	+38 302	+1143892	5976Y	0	240421380	706321444931	199651101086	80943		
DL235	+38 289	+1144000	5660Y	2	187421352	704751468091	199632100446	81330		
DL236	+38 273	+1144074	5715Y	0	163421320	703671465761	199609100754	81425		
DL237	+38 276	+1144181	5655Y	0	327421322	702101469601	199613100569	81608		
DL238	+38 297	+1144306	5024Y	0	167421356	700271503701	199644 98008	81039		
DL239	+38 351	+11444035	50200T	0	131421452	698821498541	199723 97358	80367		
DL240	+38 399	+1144475	5055C	0	111421539	697751495371	199793 97317	80187		
DL241	+38 444	+11444105	5010T	0	130421624	698681497701	199859 97910	80641		
DL242	+38 416	+1144307	5451Y	0	175421576	700201483861	199818 99869	81452		
DL243	+38 350	+1144242	5453Y	6	193421456	701181483741	199721 99973	81567		
DL244	+38 345	+1144159	6216Y	0	468421450	702391433301	199714102126	81387		
DL245	+38 340	+1143953	5826C	0	194421448	705411459201	199706101945	81368		
DL246	+38 366	+1144023	5733Y	0	159421494	704371463151	199745100527	81132		
DL247	+38 377	+1144081	5889Y	0	163421512	703521453581	199761101022	81100		
DL248	+38 420	+1144123	5564C	9	142421590	702891474091	199823 99951	81124		
DL249	+38 355	+1143855	6114Y	0	253421480	706841436871	199729101502	80902		
DL251	+38 408	+1143967	5853C	0	178421574	705171449921	199806100272	80487		



STATION IDENT.	LAT. DEG	MIN	LONG. DEG	MIN	ELEV. +CODE	TER-COR. IN/OUT	NORTH UTM	EAST UTM	ORSV GRAV	THEO GRAV	FAA	CRA +1000
DL253	+38	412	+114	0195	6055Y	0	345421573	70184144000	19981210	1176	80869	
DL254	+38	475	+114	0152	5465C	0	146421691	70244147824	199904	99353	80859	
DL255	+38	497	+114	0228	5454Y	0	122421729	70132148358	199937	99751	81271	
DL256	+38	491	+114	0333	5501Y	0	129421714	69978148152	199927	100004	81363	
DL257	+38	465	+114	0379	6443Y	0	305421686	70773142023	199890	102775	81105	
DL258	+38	448	+114	0390	6050Y	0	208421650	70613143952	199865	101028	80601	
DL259	+38	468	+114	0397	5855Y	0	173421684	70503144932	199894	100143	80346	
DL260	+38	515	+114	0387	6169Y	17	217421775	70647143566	199963	101663	80856	
DL261	+38	538	+114	0004	5748Y	0	154421813	70457145595	199996	99696	80245	
DL262	+38	520	+114	0074	5589Y	0	138421777	70356146721	199970	99351	80427	
DL263	+38	531	+114	0142	5463Y	0	133421795	70256147621	199986	99049	80550	
DL265	+38	582	+114	0384	6343Y	0	281421900	70689142448	200061	102087	80734	
DL266	+38	575	+114	0392	5856Y	0	187421884	70565145167	200051	100231	80445	
DL269	+38	663	+114	0392	5892Y	0	174422047	70570144449	200179	99723	79801	
DL270	+38	740	+114	0382	459911T	0	184422193	70711144842	200292	100938	80688	
DL271	+38	730	+114	0391	858281T	0	150422171	70574145069	200277	99642	79915	
DL272	+38	692	+114	0402	5604Y	0	141422097	70418146056	200222	98576	79603	
DL273	+38	664	+114	0399	056660T	0	149422046	70472145723	200180	98868	79692	
DL274	+38	627	+114	0406	255600T	0	135421975	70368146718	200127	98921	80092	
DL275	+38	593	+114	0402	5628Y	0	145421914	70424146315	200077	99204	80154	
DL276	+38	711	+114	0412	15622Y	0	121422128	70278146583	200249	99244	80190	
DL278	+38	602	+114	0417	554062T	0	129421925	70204147917	200090	98703	80394	
DL282	+38	564	+114	0427	452880T	0	136421851	70061149563	200034	99295	81395	
DL285	+38	562	+114	0435	5258B	20	124421844	69941149759	200031	99207	81418	
DL286	+38	546	+114	0438	25221B	0	153421814	69904149983	200008	99110	81456	
DL287	+38	531	+114	0440	5190B	0	128421785	69871150032	199986	98892	81318	
DL288	+38	516	+114	0443	5161B	0	122421756	69828149722	199964	98329	80848	
DL289	+38	504	+114	0445	5140B	0	116421733	69795149613	199947	98040	80625	
DL290	+38	492	+114	0448	5116B	0	116421710	69760149465	199929	97683	80350	
DL291	+38	560	+114	0445	5171B	0	138421837	69797149962	200029	98599	81100	
DL292	+38	613	+114	0429	5602Y	0	113421941	70034147047	200106	99664	80670	
DL293	+38	628	+114	0438	15736Y	94	146421966	69902146579	200128	100435	81111	
DL294	+38	623	+114	0440	15250C	0	121421952	69741149622	200121	98914	81129	
DL295	+38	705	+114	0443	353930T	0	124422106	69822148596	200241	99110	80840	
DL296	+38	710	+114	0432	055230T	0	130422119	69987147485	200248	99216	80509	
DL297	+38	687	+114	0423	755000T	1	122422080	70110147258	200214	98806	80170	
DL298	+37	3818	+114	0437	5693S	157	260416767	69946144533	196024	102089	83089	
DL299	+37	3793	+114	0434	5845S	81	262416725	70128143465	195988	102489	82696	
DL300	+37	3808	+114	0418	6147S	106	355416757	70316141894	196009	103740	83235	
DL301	+37	3802	+114	0407	6229S	0	252416750	70475141455	196001	104081	83087	
DL302	+37	3778	+114	0397	5905Y	0	171416709	70633143122	195966	102732	82763	
DL303	+37	3781	+114	0384	5923S	0	166416719	70813143281	195970	103057	83021	
DL304	+37	3818	+114	0379	5874S	0	164416790	70886143153	196024	102413	82542	
DL305	+37	3904	+114	0378	5825S	0	150416949	70895143114	1961	101788	82070	
DL306	+37	3849	+114	0390	5929Y	0	164416843	70734143518	196070	103251	83193	
DL307	+37	3846	+114	0397	6072S	0	190416835	70620142337	196065	103421	82901	
DL308	+37	3838	+114	0425	5707S	0	204416810	70207144673	196053	102332	83071	
DL309	+37	3888	+114	0442	5928S	0	776416897	69965142848	196127	102526	83083	
DL310	+37	3869	+114	0434	5618S	0	298416864	70082145344	196098	102120	83256	
DL311	+37	3921	+114	0435	5180Y	0	160416960	70056148347	196174	100923	83416	
DL312	+37	3959	+114	0408	5070Y	0	155417028	69982148878	196230	100363	83226	
DL313	+37	3982	+114	0431	5202S	0	159417074	70122148157	196263	100851	83263	
DL314	+37	3916	+114	0426	5594S	0	210416954	70196145464	196167	101936	83066	
DL315	+37	3900	+114	0419	5890S	0	285416927	70306143554	196144	102845	83041	
DL316	+37	3884	+114	0407	6598S	0	570416902	70472138791	196120	104772	82838	
DL317	+37	3917	+114	0405	6904S	0	1031416965	70562136522	196169	105337	82820	
DL318	+37	3927	+114	0388	6053S	0	107416988	70734142610	196182	105882	83254	

STATION IDENT.	LAT. DEG MIN	LONG. DEG MIN	ELEV. +CODE	TEMP. COR. IN/OUT	NORTH UTM	EAST UTM	QASV GRAV	THEO GRAV	FAA	CRA +1000
DL319	+373984	+1143763	5744Y	0	141417098	70930143166196266100960				81510
DL320	+374000	+1143846	5801S	5	144417125	70807143175196290101482				81846
DL321	+374020	+1143955	5902S	0	160417158	70646143052196319102281				82311
DL322	+373993	+1144034	6207S	0	283417105	70531141568196280103729				82841
DL323	+373962	+1144101	6376S	0	384417045	70434140518196234104306				82944
DL324	+373994	+1144188	6352S	174	541417101	70304139987196280103492				82542
DL325	+374036	+1144395	5418S	0	251417171	69998146562196342101211				82983
DL326	+374059	+1144246	5278Y	0	172417219	70216147789196376101086				83256
DL327	+374078	+1144160	5660S	0	223417257	70342145237196403102103				83022
DL328	+374038	+1144066	6138S	0	293417187	70482141744196345103169				82527
DL329	+374071	+1143844	5798S	0	135417256	70806143311196393101486				81845
DL330	+374102	+1143930	5801Y	0	142417310	70679143407196438101566				81922
DL331	+374166	+1143755	5725S	0	129417435	70933144332196531101682				82284
DL332	+374180	+1143888	5778S	0	134417456	70737143709196552101537				81964
DL333	+374110	+1144073	6026S	0	293417320	70468142512196450102779				82519
DL334	+374114	+1144253	5221S	0	150417321	70203148182196455100863				83205
DL335	+374095	+1144359	5559S	0	431417282	70048145581196428101472				82942
DL336	+374169	+1144493	4773Y	0	121417414	69848149838196536	98221			82062
DL337	+374176	+1144471	4800S	0	121417427	69880149902196546	98527			82276
DL338	+374165	+1144447	4849Y	0	122417408	69916149925196530	99029			82612
DL339	+374156	+1144422	4898Y	0	134417392	69953149909196517	99487			82915
DL340	+374147	+1144307	4942Y	0	134417376	69990149744196504	99750			83028
DL341	+374137	+1144374	4985Y	0	139417359	70024149492196489	99917			83054
DL342	+374132	+1144345	5035S	0	138417351	70067149244196482100147				83112
DL343	+374181	+1144278	5138S	0	138417444	70163148812196553100613				83227
DL344	+374154	+1144161	5388Y	0	168417398	70337147154196514101348				83139
DL345	+374202	+1144128	5551Y	0	178417488	70383146206196584101865				83110
DL346	+374180	+1144053	6103S	0	395417450	70494141838196552102727				82306
DL347	+374172	+1143999	5889S	0	172417437	70574143293196541102178				82264
DL348	+374242	+1143708	5764Y	9	131417574	70866144258196642101865				82336
DL349	+374242	+1143805	5710S	0	132417570	70724144516196642101614				82271
DL350	+374256	+1144432	4802S	0	135417577	69934150253196663	98782			82539
DL351	+374237	+1144376	4959S	0	141417544	70017149779196635	99814			83041
DL352	+374228	+1144217	5650S	0	247417533	70251145585196622102138				83115
DL353	+374265	+1144224	6014S	0	656417601	70239142751196676102677				82621
DL354	+374265	+1144136	6298S	0	736417604	70368140823196676103423				82679
DL355	+374251	+1144063	6001S	59	234417581	70476142874196655102698				82524
DL356	+374256	+1143998	5970S	39	205417592	70572142802196663102327				82209
DL357	+374301	+1143933	5798S	0	164417678	70685144126196728101966				82355
DL358	+374307	+1143826	5770S	0	148417693	70822144546196738102114				82583
DL359	+374381	+1143759	5695S	0	131417832	70917145007196845101761				82468
DL360	+374473	+1143779	5456Y	0	126418002	70883146381196979100750				82267
DL361	+374441	+1143832	5431Y	0	134417941	70807146636196933100817				82427
DL362	+374370	+1143909	5673S	0	138417807	70697144941196829101554				82343
DL363	+374458	+1143955	5601S	0	139417968	70625146656196957102412				83448
DL364	+374415	+1143984	5565S	0	125417887	70585146000196895101480				82624
DL365	+374325	+1143972	5700S	0	138417721	70607144937196763101819				82516
DL366	+374325	+1144061	5999S	70	272417718	70476142800196763102498				82379
DL367	+374374	+1144054	5785S	82	220417809	70484144592196835102203				82774
DL368	+374442	+1144099	5437S	0	132417933	70415147172196934101408				82996
DL369	+374491	+1144131	5966S	0	521418022	70365143191197005102336				82508
DL370	+374401	+1144170	5219Y	0	150417854	70312148607196874100850				83199
DL371	+374323	+1144168	6110S	0	674417710	70319142296196760103042				82876
DL372	+374324	+1144267	5208S	0	150417708	70173148451196762100703				83090
DL373	+374289	+1144319	5879S	158	639417642	70098143464196711102082				82828
DL374	+374345	+1144389	4771Y	0	142417743	69993150880196792	98986			82856
DL375	+374321	+1144371	5816S	0	144417710	70018150850196795	99070			82800

STATION IDENT.	LAT. DEG MIN	LONG. DEG MIN	ELEV. +CODE	TEMP. COR. IN/OUT	NORTH UTM	EAST UTM	MSV GRAV	THEO GRAV	FAA	CBA +1000
DL376	+374345	+1144497	4609S	0	112417739	69834150650196792	97232	81624		
DL378	+374459	+1144448	4650S	0	109417952	69901150970196959	97772	82021		
DL379	+374437	+1144341	4855S	2	129417915	70059150558196927	99322	82894		
DL380	+374480	+1144255	5500S	0	286417997	70184146464196990101238	82765			
DL381	+374401	+1144259	5025Y	0	168417851	70181149688196874100106	83135			
DL384	+373763	+1143716	5700S	0	155416691	71009143382195944101084	81798			
DL385	+373871	+1143654	5728S	0	161416893	71095142894196102100702	81327			
DL386	+374002	+1143685	5681Y	0	132417134	71043143440196292100611	81367			
DL387	+374007	+1143574	5355S	0	161417148	71206145924196300100022	81919			
DL388	+373960	+1143488	5223S	0	176417064	71335146738196231	99661	82022		
DL389	+373904	+1143370	5250S	0	132416965	71511146591196149	99851	82076		
DL393	+373984	+1143357	5494S	0	156417113	71527145178196266100619	82036			
DL394	+374027	+1143428	5577D	0	155417190	71420144724196329100881	82014			
DL395	+374073	+1143516	5642S	0	156417272	71289145390196396102094	83006			
DL396	+374108	+1143463	5843S	0	186417339	71365143598196447102143	82400			
DL397	+374068	+1143634	5560S	0	134417258	71115144907196388100846	82016			
DL398	+374083	+1143736	5703S	0	128417282	70965143746196410101010	81687			
DL399	+374149	+1143681	5687S	0	135417406	71042144419196507101436	82174			
DL400	+374148	+1143618	5667S	0	147417407	71135144575196505101408	82226			
DL401	+374214	+1143698	5767S	0	138417526	71014144744196602102419	82688			
DL402	+374267	+1143729	5784S	0	136417623	70966144583196679102341	82749			
DL403	+374245	+1143620	5870S	0	159417586	71127144492196647103092	83230			
DL404	+374236	+1143561	6055S	12	198417572	71215143047196634103402	82960			
DL408	+374095	+1143373	5820S	0	204417318	71498143787196428102135	82488			
DL411	+374157	+1143529	5836S	0	179417427	71265143874196519102283	82557			
DL412	+374191	+1143632	5802S	0	155417486	71112144032196568102069	82435			
DL413	+374332	+1143679	5883S	0	174417745	71037144510196773103105	83214			
DL414	+374361	+1143605	5853S	0	161417801	71144144408196816102678	82876			
DL415	+374410	+1143668	6039S	0	264417889	71049143378196888103330	82997			
DL416	+374446	+1143587	5838S	0	156417959	71166144437196940102443	82687			
DL417	+374491	+1143499	5885S	0	163418046	71294143995197005102378	82468			
DL418	+374402	+1143521	6122S	0	225417680	71265142507196876103251	82596			
DL422	+373729	+1144435	6002S	111	366416602	69953142418195895103013	83019			
DL423	+373717	+1144147	5885S	0	195416590	70377143367195877102878	83001			
DL424	+373724	+1144049	6026Y	0	179416607	70521142384195888103213	82839			
DL425	+375280	+1145506	5829S	0	227419434	68314145235198157101938	82284			
DL426	+375257	+1145305	5422S	0	172419398	68609147154198123100059	81738			
DL427	+375296	+1145382	6061S	0	622419468	68495142705198180101569	81519			
DL428	+375345	+1145288	5113S	0	142419561	68630149725198252	99594	82297		
DL429	+375384	+1145392	5712S	0	224419630	68476145965198309101415	82157			
DL430	+375401	+1145298	5094Y	0	161419665	68613149966198334	99572	82359		
DL431	+375324	+1145488	5835S	0	270419516	68338145415198221102110	82479			
DL432	+375382	+1145477	5915S	0	263419624	68352144772198306102136	82225			
DL433	+375436	+1145272	5060Y	0	116419730	68650150079198385	99501	82291		
DL434	+375451	+1145296	5134Y	0	121419757	68614149761198407	99671	82281		
DL435	+375458	+1145320	5175Y	0	118419769	68579149571198417	99856	82324		
DL436	+375468	+1145344	5193Y	0	123419787	68543149575198432100015	82426			
DL437	+375477	+1145370	5224Y	0	144419803	68505149508198445100227	82553			
DL438	+375485	+1145396	5257Y	0	129419817	68466149369198457100388	82586			
DL439	+375487	+1145424	5299Y	0	144419819	68425149066198459100477	82547			
DL440	+375480	+1145450	5355Y	0	140419806	68387148663198449100631	82507			
DL441	+375483	+1145477	5421Y	0	153419810	68348148147198454100713	82376			
DL442	+375490	+1145503	5423Y	0	144419822	68309148101198464100675	82323			
DL443	+375518	+1145340	5142Y	0	125419880	68547150084198505	99971	82558		
DL444	+375600	+1145321	5245S	0	123420032	68571149492198625100229	82463			
DL445	+375580	+1145411	5536S	0	125419992	68440147596198595101104	82347			
DL446	+375571	+1145406	5337S	0	136419977	68271148741198502100007	82342			

STATION IDENT.	LAT. DEG MIN	LONG. DEG MIN	ELEV. +CODE	TER-COR. TN/OUT	NORTH UTM	EAST UTM	ORSV GRAV	THEO GRAV	FAA	CHA +1000
DL453	+375312	+1145229	51730	50	115419502	687181496091982041	100089	82611		
DL454	+375295	+1145110	47960	0	109419475	68693151795198179	98750	82502		
DL455	+375363	+1145144	48770	0	108419599	68841151381198278	99000	82474		
DL456	+375303	+1145024	47540	0	95419493	69019151309198191	97858	81738		
DL457	+375350	+1144925	47205	0	87419583	69162151194198259	97354	81342		
DL458	+375262	+1144923	46755	0	88419420	69169151489198131	97354	81496		
DL459	+375313	+1144836	46475	0	88419517	69294150993198205	96520	80758		
DL460	+375260	+1144665	46245	0	90419425	69547149753198128	95140	79459		
DL461	+375308	+1144606	46360	0	95419516	69632149735198198	95166	79449		
DL462	+375310	+1144516	46330	0	110419523	69764149806198201	95205	79513		
DL463	+375388	+1145023	48110	0	95419650	69017150947198315	97908	81594		
DL464	+375426	+1145250	50388	1	116419712	68683150422198370	99464	82398		
DL465	+375419	+1145223	49938	0	116419700	68723150916198360	99545	82631		
DL466	+375416	+1145197	49630	0	111419696	68761151190198356	99536	82719		
DL467	+375432	+1145174	49548	0	111419726	68794151136198379	99379	82593		
DL468	+375447	+1145151	49398	0	108419755	68827151217198401	99297	82559		
DL469	+375464	+1145135	49530	0	108419787	68850151239198426	99426	82640		
DL470	+375464	+1145097	48968	0	110419788	68905151501198426	99151	82562		
DL471	+375455	+1145068	48608	0	103419772	68948151479198413	98803	82330		
DL472	+375452	+1145040	48368	0	105419768	68989151194198409	98297	81907		
DL473	+375446	+1145012	48120	0	98419757	69031151050198400	97940	81625		
DL474	+375445	+1144986	47848	0	95419756	69069151097198398	97720	81498		
DL475	+375441	+1144956	47588	0	92419750	69113151225198392	97610	81474		
DL476	+375438	+1144929	47428	0	90419745	69153151290198388	97529	81445		
DL477	+375435	+1144906	47280	0	89419741	69186151331198384	97442	81405		
DL478	+375431	+1144878	47118	0	88419734	69228151314198378	97271	81291		
DL479	+375428	+1144851	46978	0	88419730	69267151235198373	97064	81132		
DL480	+375424	+1144824	46768	0	89419723	69307151144198367	96781	80922		
DL481	+375422	+1144798	46640	0	89419720	69345151034198365	96562	80743		
DL482	+375419	+1144770	46558	0	90419716	69386150860198360	96307	80520		
DL483	+375414	+1144718	46480	0	91419708	69463150348198353	95750	79984		
DL484	+375409	+1144690	46458	0	95419700	69504150140198345	95508	79760		
DL485	+375407	+1144666	46448	0	93419697	69539149976198343	95337	79590		
DL486	+375404	+1144638	46448	0	95419693	69581149783198338	95186	79428		
DL487	+375399	+1144608	46499	0	96419684	69625149652198331	95081	79316		
DL488	+375396	+1144574	46508	0	102419680	69675149562198327	94995	79237		
DL489	+375394	+1144553	46498	0	102419677	69706149541198323	94968	79213		
DL490	+375392	+1144530	46498	0	104419674	69739149543198321	94973	79221		
DL491	+375386	+1144501	46489	0	113419664	69782149577198312	95016	79272		
DL492	+375378	+1144506	46480	0	110419649	69775149596198300	95039	79256		
DL493	+375545	+1144528	46608	0	106419957	69735149418198545	94916	79060		
DL494	+375461	+1144594	46630	0	98419800	69642149426198422	94887	79081		
DL495	+375266	+1144762	46218	0	88419433	69405150163198137	95513	79841		
DL496	+375288	+1144755	46238	0	89419474	69414150213198169	95550	79872		
DL497	+375307	+1144749	46258	0	89419509	69422150254198197	95583	79897		
DL498	+375329	+1144743	46308	0	89419550	69430150292198229	95636	79933		
DL499	+375350	+1144736	46348	0	90419589	69439150315198259	95665	79950		
DL500	+375372	+1144730	46408	0	90419630	69447150336198291	95710	79974		
DL501	+375392	+1144724	46458	0	90419667	69455150344198321	95737	79984		
DL502	+375434	+1144705	46528	0	92419746	69481150248198382	95645	79870		
DL503	+375453	+1144695	46548	0	94419781	69495150180198410	95568	79789		
DL504	+375473	+1144684	46588	0	94419819	69510150107198439	95503	79710		
DL505	+375493	+1144673	46608	0	96419856	69525150062198469	95448	79650		
DL506	+375512	+1144663	46698	0	93419892	69539150004198496	95447	79615		
DL507	+375531	+1144652	46748	0	94419927	69554149961198524	95424	79576		
DL508	+375553	+1144641	46798	0	96419968	69570149894198556	95371	79509		
DL509	+375572	+1144631	46878	0	97420000	69587149802198580	95370	79450		

STATION IDENT.	LAT. DEG MIN	LONG. DEG MIN	ELEV. +CODE	TER-COR. IN/OUT	NORTH UTM	EAST UTM	ORSV GRAV	THEO GRAV	FAA	CHA +1000
DL510	+375593	+1144620	4690S	0	99420043	69599149791	198615	95314	79417	
DL511	+375612	+1144610	4699S	0	98420078	69612149708	198642	95287	79358	
DL512	+375633	+1144599	4705S	0	98420118	69628149649	198673	95255	79305	
DL513	+375652	+1144589	4710S	0	99420153	69641149562	198701	95187	79221	
DL514	+375672	+1144579	4715S	0	101420190	69655149534	198730	95176	79196	
DL515	+375692	+1144568	4717S	0	103420228	69670149529	198759	95161	79175	
DL516	+375711	+1144558	4720S	0	105420263	69684149509	198787	95141	79148	
DL517	+375731	+1144547	4732S	0	103420301	69699149466	198816	95182	79146	
DL518	+375752	+1144536	4742S	0	104420340	69715149415	198847	95195	79125	
DL519	+375771	+1144526	4741S	0	106420375	69728149449	198875	95191	79127	
DL520	+375791	+1144515	4745S	0	108420413	69744149469	198904	95220	79144	
DL521	+375811	+1144505	4753S	0	109420450	69757149475	198933	95272	79170	
DL522	+375912	+1144516	4785S	0	109420637	69737149893	199080	95844	79632	
DL523	+375941	+1144530	4798S	0	107420690	69715150065	199123	96095	79838	
DL524	+375968	+1144547	4810S	0	107420739	69689150205	199163	96309	80010	
DL525	+375901	+1144542	4790S	0	104420615	69699149892	199065	95906	79672	
DL527	+375918	+1144594	4801S	0	100420645	69622150157	199090	96249	79974	
DL528	+375910	+1144568	4795S	0	102420631	69661150025	199078	96073	79821	
DL529	+375927	+1144620	4804S	0	100420661	69584150237	199102	96344	80059	
DL530	+375936	+1144646	4808S	0	102420676	69545150271	199116	96403	80106	
DL531	+375945	+1144672	4813S	0	97420692	69507150275	199129	96441	80122	
DL532	+375952	+1144696	4816S	0	97420704	69471150322	199139	96506	80177	
DL533	+375961	+1144723	4822S	0	96420720	69431150367	199152	96614	80264	
DL534	+375969	+1144748	4826S	0	102420734	69395150505	199164	96758	80400	
DL535	+375979	+1144774	4831S	0	97420751	69356150745	199179	97030	80650	
DL536	+375987	+1144799	4835S	0	100420765	69319151054	199191	97366	80975	
DL537	+375996	+1144826	4839S	0	108420781	69279151370	199204	97706	81310	
DL538	+375940	+1144879	4824S	0	105420676	69204151805	199122	98082	81733	
DL539	+375932	+1144770	4815S	0	98420665	69364150597	199110	96800	80476	
DL540	+375878	+1144873	4805S	0	103420561	69216151558	199031	97746	81461	
DL541	+375846	+1144779	4786S	0	93420505	69355150528	198984	96584	80354	
DL542	+375880	+1144688	4793S	0	95420571	69486150292	199034	96365	80112	
DL543	+375820	+1144617	4771U	0	96420463	69593149693	198946	95846	79670	
DL544	+375795	+1144685	4762S	0	93420414	69494150144	198909	96049	79901	
DL545	+375772	+1144767	4760S	0	92420369	69375150484	198876	96404	80261	
DL546	+375801	+1144869	4782S	0	98420419	69225151371	198919	97456	81244	
DL547	+375727	+1144879	4771S	0	96420282	69213151297	198810	97386	81209	
DL548	+375724	+1144643	4733U	0	95420284	69559149662	198806	95597	79550	
DL549	+375681	+1144775	4732S	0	92420200	69368150710	198743	96499	80452	
DL550	+375642	+1144874	4729U	0	98420125	69229151502	198686	97320	81289	
DL551	+375636	+1144683	4711U	0	93420120	69504150161	198677	95818	79843	
DL552	+375609	+1144809	4711U	0	92420066	69321151093	198638	96790	80814	
DL553	+375586	+1144908	4711S	0	101420020	69177151597	198604	97326	81361	
DL554	+375531	+1144757	4687U	0	90419923	69401150831	198524	96416	80520	
DL555	+375526	+1144684	4747U	0	89419916	69215151407	198516	97564	81462	
DL556	+375478	+1144794	4675S	0	91419824	69349151241	198446	96790	80936	
DL557	+375502	+11445005	4788S	0	107419861	69038151404	198481	97981	81758	
DL558	+375562	+1144993	4734S	0	136419973	69053151801	198570	97782	81772	
DL559	+375621	+1144985	4758S	0	138420082	69063151815	198655	97937	81846	
DL560	+375702	+1144989	4659U	0	127420232	69053151468	198773	98422	81977	
DL561	+375746	+1144985	4882U	0	112420313	69057151312	198838	98418	81879	
DL562	+375981	+11445030	5019U	0	113420746	68981150487	199181	98540	81534	
DL563	+375906	+1144977	4909U	0	109420609	69062151194	199072	98321	81686	
DL564	+375818	+1144978	4881U	0	109420447	69064151506	198943	98498	81959	
DL566	+375970	+11445162	5332S	0	153420721	68789148944	199166	99959	81926	
DL567	+375907	+11445090	5069U	0	127420607	68897150398	199073	99029	81867	
DL568	+375864	+11446203	5363U	0	164420526	68733148518	199001	1100120	81075	

STATION IDENT.	LAT. DEG MIN	LONG. DEG MIN	ELEV. +CODE	TER-COR. IN/OUT	NORTH UTM	EAST UTM	ORSV GRAV	THEO GRAV	FAA	CHA +1000
DL569	+375820	+1145097	50840	0	120420446	68890150108198946	99008	81788		
DL570	+375776	+1145189	52458	0	132420365	68757149356198885	99833	82076		
DL571	+375760	+1145088	50590	0	115420336	68906150291198859	98959	81849		
DL572	+375704	+1145047	54360	0	241420233	68968147919198777100302		82003		
DL573	+375722	+1145231	52718	0	163420260	68698149196198803100001		82184		
DL574	+375686	+1145132	52510	0	112420197	68845149034198750	99702	81904		
DL575	+375650	+1145249	52108	11	124420127	68675149723198698100057		82422		
DL576	+375620	+1145080	58120	228	563420077	68924145114198654101161		82129		
DL577	+375600	+1145164	56950	0	287420037	68801145960198625100940		81303		
DL578	+375542	+1145244	50788	0	130419927	68687150235198540	99485	82295		
DL579	+375529	+1145196	52540	0	108419905	68757148439198521	99365	81553		
DL580	+375525	+1145076	50790	0	132419901	68933149701198515	98985	81794		
DL582	+374570	+1144778	45800	0	85418145	69412149339197121	95319	79783		
DL583	+374578	+1144596	46010	0	88418166	69679149595197133	95762	80157		
DL584	+374616	+1144698	45828	0	85418233	69527149513197188	95446	79903		
DL585	+374653	+1144804	45790	0	85418298	69370149301197242	95151	79618		
DL586	+374500	+1144861	45808	0	92418013	69293149458197019	95555	80026		
DL587	+374522	+1144665	45808	0	91418054	69286149511197051	95561	80031		
DL588	+374543	+1144870	45808	0	92418092	69278149541197081	95561	80032		
DL589	+374563	+1144874	45818	0	90418129	69271149556197111	95556	80022		
DL590	+374585	+1144879	45808	0	89418170	69263149616197143	95574	80042		
DL591	+374609	+1144882	45808	0	89418214	69257149657197177	95581	80049		
DL592	+374627	+1144889	45808	0	90418247	69246149721197204	95619	80088		
DL593	+374648	+1144894	45808	0	89418286	69238149808197234	95675	80143		
DL594	+374669	+1144896	45808	0	89418324	69231149865197265	95723	80191		
DL595	+374691	+1144902	45808	0	89418365	69224149889197296	95693	80161		
DL596	+374712	+1144917	45818	0	91418403	69202150171197328	95999	80465		
DL597	+374734	+1144910	45818	0	90418444	69211150163197360	95914	80380		
DL598	+374755	+1144904	45838	0	89418483	69219150157197391	95896	80354		
DL599	+374775	+1144899	45838	0	88418520	69225150159197420	95869	80325		
DL600	+374797	+1144893	45828	0	88418561	69233150147197452	95815	80275		
DL601	+374818	+1144887	45838	0	87418600	69241150174197483	95821	80277		
DL602	+374841	+1144881	45848	0	87418643	69249150205197510	95828	80280		
DL603	+374861	+1144875	45858	0	87418680	69257150228197545	95834	80282		
DL604	+374883	+1144869	45888	0	86418721	69265150208197577	95808	80245		
DL605	+374907	+1144869	45868	0	87418765	69264150360197613	95911	80357		
DL606	+374933	+1144856	45878	0	86418814	69281150235197651	95752	80193		
DL607	+374955	+1144850	45878	0	86418855	69289150160197683	95645	80080		
DL608	+374976	+1144844	45878	0	86418894	69297150238197713	95692	80133		
DL609	+374998	+1144838	45898	0	87418935	69305150227197745	95668	80103		
DL610	+375019	+1144832	45938	0	84418974	69313150285197776	95734	80152		
DL611	+375046	+1144826	45968	0	84419024	69321150196197810	95633	80041		
DL612	+375068	+1144820	45988	0	85419065	69328150094197848	95517	79920		
DL613	+375089	+1144813	46018	0	85419104	69336149955197878	95376	79768		
DL614	+375111	+1144809	46038	0	85419145	69343149915197910	95322	79708		
DL615	+375133	+1144802	46058	0	85419186	69352149920197942	95314	79692		
DL616	+375157	+1144794	46088	0	86419230	69363149948197977	95335	79704		
DL617	+375178	+1144789	46118	0	86419269	69369149979198009	95364	79723		
DL618	+375200	+1144783	46148	0	86419310	69377150035198041	95416	79765		
DL619	+375222	+1144776	46178	0	86419351	69386150073198073	95450	79789		
DL620	+375246	+1144769	46188	0	87419396	69395150120198108	95471	79808		
DL621	+375231	+1144531	46268	0	100419376	69745149987198086	95430	79756		
DL622	+375204	+1144605	46200	0	92419324	69638149717198046	95148	79483		
DL623	+375176	+1144696	46140	0	87419269	69506149550198005	94966	79310		
DL624	+375003	+1144750	45960	0	83418947	69434149439197752	94938	79345		
DL625	+374989	+1144649	45970	0	87418925	69583149433197732	94962	79370		
DL626	+374985	+1144656	46020	0	87418924	69771149607197727	95582	80065		

DRY LAKE VALLEY GRAVITY STATIONS

STATION IDENT.	LAT. DEG MIN	LONG. DEG MIN	ELEV. +CODE	TFR-COR. IN/OUT	NORTH UTM	EAST UTM	ORSV GRAV	THEC GRAV	FAA	CBA +100G
DL627	+375063	+1144591	4606S	0	90419064	69065149512197841			95317	79698
DL628	+375080	+1144702	4606S	0	85419091	69501149379197865			94860	79236
DL629	+375133	+1144604	4613U	0	90419193	69642149724197942			95194	79550
DL630	+374946	+1144789	4591S	0	85418840	69379149579197670			95115	79541
DL631	+374908	+1144629	4591S	0	87418776	69616149433197614			95024	79452
DL632	+374914	+1144522	4612S	0	93418791	69772150201197623			95981	80343
DL633	+374891	+1144736	4593U	0	84418740	69459149186197589			94820	79239
DL634	+374827	+1144702	4582S	0	84418620	69380149387197496			95012	79468
DL635	+374778	+1144722	4582S	0	84418532	69485149210197424			94906	79362
DL636	+374760	+1144813	4580U	0	85418496	69352149427197398			95131	79594
DL637	+374751	+1144654	4584S	0	86418484	69586149406197385			95158	79609
DL638	+374829	+1144637	4586S	0	86418629	69607149400197498			95059	79503
DL639	+374829	+1144524	4605S	0	92418633	69773150000197498			95838	80224
DL640	+374747	+1144565	4602S	0	89418480	69717149617197379			95546	79939
DL641	+374709	+1144891	4580S	0	88418399	69240149896197323			95674	80141
DL642	+374706	+1144863	4580S	0	87418394	69281149642197320			95425	79891
DL643	+374703	+1144836	4580S	0	85418389	69321149417197315			95206	79670
DL644	+374700	+1144809	4580S	0	85418385	69361149305197310			95096	79560
DL645	+374696	+1144781	4580S	0	84418378	69402149279197305			95076	79539
DL646	+374693	+1144755	4580S	0	84418374	69440149310197300			95113	79576
DL647	+374690	+1144729	4580S	0	85418369	69478149341197296			95147	79611
DL648	+374687	+1144702	4582U	0	85418364	69516149398197291			95227	79684
DL649	+374684	+1144675	4583S	0	85418360	69556149453197288			95295	79749
DL650	+374681	+1144648	4585S	0	86418355	69598149519197283			95365	79833
DL651	+374678	+1144620	4590S	0	86418351	69639149568197278			95485	79916
DL652	+374674	+1144593	4597S	0	87418344	69679149627197273			95616	80024
DL653	+374671	+1144566	4605S	0	88418340	69719149678197268			95746	80128
DL654	+374668	+1144539	4613S	0	89418335	69758149771197264			95919	80274
DL655	+374664	+1144512	4633S	0	90418328	69798149826197258			96169	80457
DL656	+374548	+1144991	4654U	0	97418097	69100150213197089			96922	81146
DL657	+374640	+1144980	4628U	0	94418268	69112150615197223			96946	81255
DL658	+374727	+1144968	4610U	0	93418429	69126150776197350			96608	81177
DL659	+374813	+1144972	4616U	0	92418588	69116151026197475			96991	81339
DL660	+374899	+1144983	4640U	0	92418747	69097151452197601			97517	81784
DL661	+374986	+1144995	4662U	0	92418907	69075151539197728			97684	81875
DL662	+375072	+1145007	4683U	0	92419066	69054151728197853			97945	82065
DL663	+375130	+1145014	4691U	0	94419173	69041151742197938			97950	82045
DL664	+375215	+1145018	4709U	0	95419330	69032151539198063			97792	81826
DL665	+375199	+1144895	4645S	0	87419305	69213151756198039			97321	81565
DL666	+375130	+1144916	4635U	0	88419176	69185151498197938			97179	81459
DL667	+375064	+1144911	4622U	0	87419054	69195151394197841			97049	81372
DL668	+374978	+1144910	4603S	0	88418895	69200151192197716			96794	81182
DL669	+374519	+1145093	4760S	0	103418040	68951150620197046			98069	81937
DL670	+374590	+1145151	4833U	0	109418170	68863150629197150			98357	81982
DL671	+374639	+1145051	4691U	0	104418264	69008150903197221			97828	81932
DL672	+374672	+1145107	4748S	0	108418323	68924150668197270			98281	82195
DL673	+374683	+1145219	5072U	0	137418339	68759148925197286			99372	82210
DL674	+374735	+1145168	4765S	0	125418437	68832150954197362			98435	82308
DL675	+374782	+1145217	4835S	0	131418522	68758150232197430			98304	81944
DL676	+374864	+1145236	4891U	0	131418674	68727150391197550			98876	82320
DL677	+374800	+1145092	4702U	0	106418560	68941151240197456			98034	82103
DL678	+374754	+1145076	4679U	0	108418475	68966151182197389			97826	81976
DL679	+374885	+1145040	4678U	0	100418719	69014151295197580			97738	81883
DL680	+374875	+1145164	4805U	5	110418696	68832150704197566			98358	82084
DL682	+374953	+1145104	4762S	0	101418843	68917150780197680			97915	81775
DL683	+374980	+1145210	4895S	0	109418889	68760150149197720			98497	81910

STATION IDENT.	LAT. DEG MIN	LONG. DEG MIN	ELEV. +CODE	TER-COR. IN/OUT	NORTH UTM	EAST UTM	ORSV GRAV	THEC GRAV	FAA	CHA +1000
DL685	+375050	+1145147	4817S	0	102419020	68650150550	197821	98061	81733	
DL686	+375139	+1145165	4848U	0	108419184	68819150729	197952	98402	81975	
DL687	+375207	+1145116	4802S	0	109419312	68888151221	198051	98362	82093	
DL688	+375245	+1145199	4910S	0	117419379	68765150765	198106	98867	82237	
DL690	+375266	+1144454	4623Y	0	116419444	69856150439	198137	95809	80157	
DL691	+375250	+1144334	4740C	0	116419419	70033150956	198113	97450	81399	
DL692	+375319	+1144407	4657C	0	120419544	69923150536	198214	96148	80384	
DL693	+375385	+1144474	4647C	0	113419663	69822149656	198311	95077	79340	
DL694	+375381	+1144445	4647C	0	120419657	69864149820	198305	95248	79518	
DL695	+375376	+1144419	46519T	0	125419649	69903150097	198298	95579	79838	
DL696	+375379	+1144387	4682C	0	123419655	69950150460	198302	96220	80374	
DL697	+375380	+1144357	4710C	0	124419658	69993150771	198303	96793	80852	
DL698	+375380	+1144322	47461T	0	128419659	70045151003	198303	97364	81304	
DL699	+375361	+1144303	4772C	0	128419625	70073151042	198276	97676	81528	
DL700	+375335	+1144293	4789Y	0	127419577	70089151059	198238	97890	81683	
DL701	+375331	+1144266	4834Y	0	132419571	70129151013	198232	98274	81919	
DL702	+375323	+1144240	4873Y	0	138419557	70168150771	198220	98411	81928	
DL703	+375313	+1144215	4921Y	0	140419539	70205150481	198205	98587	81943	
DL704	+375305	+1144188	4974Y	0	147419526	70245150064	198194	98681	81863	
DL705	+375299	+1144162	5024Y	0	151419515	70283149629	198185	98925	81941	
DL706	+375292	+1144135	5075Y	0	160419503	70323149585	198175	99173	82024	
DL707	+375284	+1144109	5126Y	0	165419490	70361149435	198163	99514	82195	
DL708	+375274	+1144083	5177Y	0	175419472	70400149313	198148	99887	82404	
DL709	+375264	+1144063	5219Y	9	162419454	70430149236	198134	100220	82590	
DL710	+375255	+1144037	5265C	0	167419439	70468148964	198121	100394	82603	
DL711	+375284	+1143942	5462C	0	240419496	70606147774	198163	101016	82626	
DL712	+375313	+1143838	5789Y	0	272419553	70757145713	198205	101991	82518	
DL713	+375270	+1143768	5972Y	0	327419476	70862144475	198143	102540	82498	
DL714	+375372	+1143767	6107Y	0	350419665	70859143913	198291	103100	82620	
DL715	+375381	+1143958	5590Y	0	216419675	70578146852	198305	101158	82308	
DL716	+375381	+1143880	5806Y	0	254419677	70693145406	198305	101785	82237	
DL719	+375347	+1144134	5040Y	0	192419605	70322150175	198255	99351	82353	
DL720	+375404	+1144146	5063Y	0	197419710	70302150048	198338	99358	82287	
DL721	+375370	+1144217	4890Y	0	153419645	70199150652	198289	98383	81858	
DL722	+375440	+1144052	5315C	36	216419780	70438148644	198391	100274	82596	
DL723	+375462	+1143939	5829Y	0	227419825	70602145247	198423	101684	82030	
DL725	+375496	+1143816	6216Y	0	286419692	70781143047	198473	103078	82163	
DL726	+375523	+1143918	6174Y	0	296419939	70630142808	198513	102405	81643	
DL735	+375730	+1143881	5729Y	0	269420323	70675146565	198815	101669	82396	
DL736	+375732	+1143953	5560C	0	253420324	70569147081	198818	104591	81860	
DL739	+375776	+1143766	6059C	0	314420412	70841144031	198882	102175	81823	
DL740	+375794	+1143876	5775Y	0	240420441	70679145491	198909	100935	81476	
DL741	+375807	+1143999	5442Y	0	207420461	70498147614	198927	100103	81749	
DL742	+375775	+1144101	5220Y	0	197420398	70350149324	198880	99570	81963	
DL743	+375834	+1144109	5879Y	0	621420507	70336144422	198966	100786	81355	
DL744	+375881	+1144123	5160Y	0	181420593	70313149283	199035	98613	81394	
DL745	+375896	+1144041	5308Y	0	184420624	70433148437	199057	99335	81414	
DL746	+375915	+1143943	5584C	0	229420663	70575146613	199085	100082	81265	
DL747	+375874	+1143916	55850T	0	243420588	70617146505	199025	100043	81237	
DL749	+375964	+1143841	5979Y	0	287420757	70722144259	199157	101375	81269	
DL750	+375991	+1144054	5289	0	195420799	70409148205	199196	98785	80931	
DL751	+375946	+1144143	5101B	0	159420713	70281149378	199130	98253	81014	
DL752	+375994	+1144239	4963Y	0	142420798	70136149902	199201	97409	80624	
DL753	+375954	+1144240	4962Y	0	139420724	70139149752	199142	97308	80523	
DL754	+375908	+1144311	4868Y	0	131420636	70037149666	199075	96404	79931	
DL755	+375933	+1144370	4815Y	0	131420681	69949149932	199112	96131	79840	
DL756	+375964	+1144050	4806S	0	151420726	69841150057	199157	96072	79822	



DRY LAKE VALLEY GRAVITY STATIONS

STATION IDENT.	LAT. DEG MIN	LONG. DEG MIN	ELEV. +CODE	TEMP. IN/OUT	COR. UTM	NORTH UTM	EAST UTM	ORSV GRAV	THEC GRAV	FAA	CRA +1000
DL757	+375891	+1144493	4777S	0	109420598	69771149738199050	95644	79460			
DL758	+375878	+1144470	4772U	0	111420575	69806149674199031	95551	79386			
DL759	+375853	+1144481	4764S	0	109420529	69791149559198995	95396	79258			
DL760	+375831	+1144490	4756S	0	109420488	69778149505198963	95301	79188			
DL761	+375859	+1144360	47989T	0	127420544	69967149635199003	95794	79553			
DL762	+375864	+1144236	4961Y	0	142420558	70149149724199011	97397	80618			
DL763	+375805	+1144339	48031T	0	132420445	70001149854198924	96125	79875			
DL764	+375787	+1144422	4746S	0	119420409	69880149553198898	95319	79250			
DL765	+375701	+1144439	4720S	0	121420249	69859149457198773	95104	79126			
DL766	+375727	+1144333	47940T	0	133420301	70013150080198810	96386	80168			
DL767	+375789	+1144224	4986S	0	150420419	70170149835198901	97857	81001			
DL768	+375727	+1144204	4983Y	0	170420306	70202150196198810	98281	81455			
DL769	+375653	+1144219	4909Y	0	186420168	70183150730198702	98226	81669			
DL770	+375648	+1144303	47641T	0	149420156	70060150769198695	96907	80807			
DL771	+375636	+1144392	4698Y	0	131420130	69931149717198677	95254	79362			
DL772	+375625	+1144481	4711Y	0	108420107	69801149329198661	95003	79043			
DL773	+375542	+1144420	4677S	0	124419956	69894149578198540	95053	79225			
DL774	+375528	+1144337	4670S	0	151419933	70016150289198520	95719	79941			
DL775	+375579	+1144276	47310T	0	177420029	70103151205198594	97133	81174			
DL776	+375491	+1144254	47549T	0	186419867	70139151422198466	97710	81678			
DL777	+375472	+1144481	4664S	0	113419824	69898149441198438	94896	79101			
DL778	+375458	+1144374	4667S	0	142419802	69965150258198417	95762	79986			
DL779	+375420	+1144303	47461T	0	138419734	70071151088198362	97390	81341			
DL780	+38 762	+1144385	5618Y	0	108422213	69890147006200324	99556	80502			
DL781	+38 761	+1144303	5775Y	0	126422214	700101466642003231	100693	81122			
DL782	+38 771	+1144225	5627Y	0	124422236	70123146358200338	98979	79911			
DL783	+38 815	+1144274	5687Y	0	126422315	70050146385200402	99506	80235			
DL784	+38 807	+1144421	5856Y	0	148422295	69835145479200390	100204	80379			
DL785	+38 819	+1144491	5702Y	0	122422315	69733146537200408	99794	80468			
DL786	+38 873	+1144352	5747Y	10	122422420	69933146349200487	99947	80477			
DL787	+38 922	+1144445	5685Y	0	136422507	69795146689200559	99635	80381			
DL788	+38 755	+1144039	57128	0	128422213	70396145450200314	98694	79540			
DL789	+38 794	+1144118	57618	0	130422282	70279145386200371	99233	79714			
DL790	+38 794	+11443968	5762Y	0	146422286	70498145880200371	99738	80231			
DL793	+38 834	+11443878	5847Y	0	202422365	70627146112200430	100712	80972			
DL795	+38 930	+11443983	6304Y	0	155422539	70470143380200570	102142	80796			
DL800	+38 892	+1144276	6034Y	0	149422458	70043144713200515	100989	80558			
DL801	+381022	+1144483	57498	0	117422691	69735146295200705	99697	80205			
DL803	+38 997	+1144460	6073Y	0	150422647	69657144794200668	101284	80720			
DL804	+38 963	+1144323	6117Y	0	164422587	69971144706200619	101660	80960			
DL805	+381005	+1144263	6658Y	0	386422667	70057141123200680	103109	80787			
DL811	+38 957	+11443793	6133Y	0	124422596	70746144353200609	101466	80672			
DL819	+381068	+1144425	5953Y	0	125422778	69818145734200772	100989	80810			
DL820	+381149	+1144439	6168Y	79	161422927	6979414379620089	1100957	80160			
DL826	+381213	+1144420	5872Y	0	125423046	69810145904200984	100184	80281			
DL829	+375339	+11443674	6509S	0	504419607	70996141423198244	104443	82746			
DL839	+374176	+11445261	5031Y	0	121417400	68719148442196546	99243	82205			
DL840	+374174	+11445289	5073Y	0	127417396	68678148285196543	99485	82309			
DL841	+374173	+11445315	5111Y	0	133417393	68640148168196541	99727	82428			
DL842	+374175	+11445342	5157Y	0	144417396	68600147956196545	99945	82500			
DL843	+374177	+11445365	5191Y	0	159417399	68566147868196548	100174	82628			
DL844	+374180	+11445395	5233Y	0	182417403	68522147786196552	100483	82817			
DL845	+374179	+11445423	5265F	0	196417400	68481147739196551	100789	83028			
DL846	+374181	+11445454	5330Y	0	220417403	68435147516196553	101125	83166			
DL847	+374180	+11445482	5372Y	0	232417400	68394147332196552	101338	83247			
DL848	+374186	+11445509	5412F	6	223417411	68354147123196561	101497	83267			
DL849	+374197	+11445520	5451F	6	263417420	68323146636196572	101547	83286			

STATION IDENT.	LAT. DEG MIN	LONG. DEG MIN	ELEV. +CODE	TER-COR. IN/OUT	NORTH UTM	EAST UTM	ORSV GRAV	THEO GRAV	FAA	CBA +1000
DL850	+374090	+1145431	5504S	0	167417236	68473146010	1964211	101390		82784
DL851	+374093	+1145303	5055Y	0	145417245	68661148457	196425	99606		82509
DL855	+373952	+1145313	5120Y	0	115416984	68652147895	196220	99861		82513
DL856	+373971	+1145418	5310S	0	143417016	68497146809	1962471	100536		82508
DL857	+373960	+1145542	5599S	0	196416992	68315145330	1962311	101794		82893
DL858	+373872	+1145328	5050Y	0	118416836	68633148205	196103	99622		82516
DL859	+373891	+1145439	5268S	0	121416867	68469147860	1961301	101309		83462
DL860	+373936	+1145665	5638S	45	280416943	68135144348	1961961	101215		82310
DL861	+373820	+1145273	4974S	0	101416742	68716148057	196027	98641		81977
DL862	+373802	+1145383	5059Y	0	105416705	68555147479	196001	99089		81939
DL863	+373857	+1145489	5211S	0	120416803	68397147808	1960811	100769		83116
DL864	+373779	+1145498	5113Y	0	110416658	68387147035	195967	99187		81858
DL865	+373856	+1145596	5268B	0	141416797	68240146810	1960801	100299		82472
DL866	+373866	+1145688	5247R	0	186416813	68104147055	1960951	100363		82653
DL867	+373821	+1145714	5155S	0	141416729	68068147227	196029	99713		82272
DL868	+373880	+1145791	5219B	0	199416836	67952147429	1961151	100433		82831
DL869	+373820	+1145824	5070S	0	138416724	67906147779	196027	99466		82312
DL870	+373896	+1145886	5162S	0	209416862	67812147579	1961381	100026		82629
DL871	+373820	+1145934	5058S	0	123416720	67744147787	196027	99362		82233
DL874	+374043	+1145577	6018S	0	332417144	68260142435	1963521	102723		82530
DL878	+374221	+1145343	5304S	0	147417481	68597147023	1966121	100329		82386
DL881	+374310	+1145278	5012S	0	150417648	68686149043	196741	99470		82526
DL882	+374313	+1145376	5308S	12	156417650	68544147224	1967461	100433		82497
DL883	+374373	+1145265	4980	0	145417764	68705149277	196834	99311		82470
DL886	+374434	+1145272	5034S	0	132417877	68692149080	196923	99533		82495
DL887	+374430	+1145330	5132S	0	152417868	68607148544	196916	99926		82574
DL888	+374414	+1145423	5294R	0	207417835	68471147729	1968931	100656		82800
DL889	+374432	+1145514	5614S	0	197417865	68337146130	1969201	102047		83096
DL890	+374465	+1145379	5202S	0	164417931	68534148175	1969681	100165		82587
DL891	+374495	+1145467	5399Y	0	228417983	68403147306	1970121	101106		82920
DL892	+373819	+1144833	4804U	0	108416755	69364148472	196026	97664		81387
DL893	+373907	+1144834	4720U	0	103416917	69353148742	196154	97007		81012
DL894	+373996	+1144835	4668U	0	101417082	69353148677	196284	96523		80703
DL895	+374083	+1144834	4639U	0	96417243	69351148975	196410	96220		80494
DL896	+374170	+1144835	4617U	0	90417404	69345149154	196538	96067		80413
DL897	+374193	+1144834	4612S	0	95417446	69346149203	196571	96035		80400
DL898	+374214	+1144833	4609U	0	93417485	69346149235	196602	96008		80381
DL899	+374235	+1144832	4602S	0	90417524	69347149258	196632	95934		80332
DL900	+374259	+1144831	4596U	0	90417568	69347149284	196667	95869		80288
DL901	+374289	+1144826	4593U	0	93417624	69351149289	196711	95800		80228
DL902	+374315	+1144829	4590S	0	94417672	69348149295	196746	95742		80180
DL903	+374347	+1144829	4587U	0	92417731	69347149316	196795	95688		80135
DL904	+374369	+1144834	4586S	0	93417772	69338149320	196827	95651		80102
DL905	+374391	+1144839	4584S	0	93417812	69330149359	196859	95639		80097
DL906	+374411	+1144842	4584S	0	92417849	69325149381	196889	95631		80089
DL907	+374432	+1144848	4584S	0	92417888	69315149414	196920	95634		80091
DL908	+374454	+1144851	4581S	0	93417928	69310149417	196952	95576		80045
DL909	+374476	+1144856	4580S	0	93417969	69301149430	196984	95548		80020
DL911	+374167	+1144517	4735S	0	111417409	69813149635	196533	97863		81824
DL912	+374169	+1144548	4660S	0	109417412	69767149951	196536	97452		81605
DL913	+374170	+1144576	4646S	0	106417413	69726149920	196538	97105		81365
DL914	+374170	+1144602	4630S	0	104417412	69688149711	196536	96746		81056
DL915	+374170	+1144631	4615S	0	102417411	69645149492	196538	96386		80747
DL916	+374170	+1144665	4610S	0	99417410	69595149235	196538	96081		80457
DL917	+374169	+1144696	4607S	0	97417407	69550149133	196536	95953		80336
DL918	+374171	+1144723	4607U	0	96417409	69510149091	196539	95908		80290
DL919	+374171	+1144752	4608S	0	96417409	69510149091	196539	95908		80290

STATION IDENT.	LAT. DEG MIN	LONG. DEG MIN	ELEV. +CODE	TER-GR. IN/OUT	NORTH UTM	EAST UTM	CRSV GRAV	THEO GRAV	FAA	CEA +1000
DL920	+374171	+114478	4609S	0	94417407	69426149118196539	95953	80327		
DL921	+374171	+114480	4612S	0	95417406	69386149134196539	95998	80362		
DL922	+374172	+114487	4628S	0	95417406	69285149157196541	96171	80481		
DL923	+374171	+114490	4644S	0	94417403	69247149154196539	96319	80574		
DL924	+374173	+114492	4660S	0	96417406	69209149165196541	96478	80680		
DL925	+374174	+114495	4662S	0	94417407	69166149221196543	96739	80665		
DL926	+374172	+114498	4702S	0	95417402	69128149307196541	97017	81075		
DL927	+374172	+114501	4729S	0	96417401	69088149349196541	97313	81280		
DL928	+374172	+114503	4754U	0	98417400	69048149340196541	97540	81423		
DL929	+374173	+114505	4778U	0	100417402	69019149265196541	97689	81493		
DL930	+374174	+114508	4798S	0	101417403	68981149232196543	97842	81579		
DL931	+374171	+114511	4830U	0	104417396	68941149125196539	98042	81672		
DL932	+374176	+114513	4854S	0	105417405	68906149055196546	98190	81740		
DL933	+374172	+114516	4890U	0	108417396	68865148888196541	98368	81797		
DL934	+374177	+114520	4949U	0	112417404	68803148642196546	98670	81902		
DL935	+374177	+114523	4984S	0	118417403	68763148567196546	98924	82043		
DL936	+373819	+114455	5032U	0	147416764	69771148214196026	99602	82566		
DL937	+373825	+114464	4927U	0	124416772	69643148259196034	98592	81911		
DL938	+373819	+114472	4850U	0	117416758	69527148570196026	98188	81765		
DL939	+373895	+114460	4863S	0	122416903	69690148730196137	98359	81695		
DL940	+373907	+114450	4980U	0	162416929	69846149080196154	99793	82970		
DL941	+373907	+114472	4754U	0	109416921	69520148891196154	97477	81371		
DL942	+373939	+114458	4827U	0	120416985	69719149092196201	98318	81974		
DL943	+373994	+114450	4892U	0	127417090	69843149349196280	99107	82549		
DL944	+373994	+114461	4752U	0	112417086	69678149147196280	97587	81491		
DL945	+373995	+114472	4679U	0	106417084	69516148989196282	96740	80687		
DL946	+374081	+114451	4772S	0	114417250	69815149794196408	98295	82133		
DL947	+374082	+114462	4668S	0	105417248	69658149302196409	96823	81007		
DL948	+374083	+114472	4634U	0	100417247	69514149052196410	96251	80546		
DL949	+374211	+114453	4675S	0	108417490	69787150232196597	97631	81793		
DL950	+374232	+114463	4586U	0	100417525	69634149440196628	95971	80429		
DL951	+374259	+114472	4584U	0	94417572	69509149179196667	95652	80111		
DL952	+374278	+114456	4598S	0	104417613	69743150306196695	96882	81303		
DL954	+374346	+114460	4580U	0	97417737	69673149475196794	95754	80260		
DL955	+374346	+114471	4580U	0	92417733	69511149217196794	95525	79996		
DL956	+374405	+114462	4579U	0	94417846	69644149423196880	95635	80111		
DL957	+374430	+114452	4595S	0	102417895	69795150159196916	96485	80915		
DL958	+374432	+114473	4580S	0	89417892	69487149245196920	95427	79895		
DL959	+374495	+114478	4580S	0	89418006	69405149309197012	95399	79667		
DL960	+374495	+114458	4587S	0	93418013	69694149621197012	95777	80225		
DL961	+374499	+114521	4912S	0	124417999	68777149764197017	98974	82345		
DL962	+374457	+114506	4669U	0	100417929	69086150170196956	97163	81335		
DL963	+374432	+114491	4610S	0	96417885	69212149613196920	96077	80450		
DL964	+374432	+114506	4731U	0	105417880	69001150284196920	97688	81357		
DL965	+374432	+114516	4854S	0	113417877	68854149505196920	98426	81964		
DL966	+374346	+114494	4638U	0	96417729	69183149547196797	96398	80675		
DL967	+374363	+114501	4689U	0	101417754	69073149916196819	97226	81334		
DL968	+374348	+114510	4776U	0	111417724	68941149867196797	98018	81339		
DL969	+374348	+114516	4835U	0	118417722	68859149665196797	98374	82001		
DL970	+374289	+114502	4711U	0	100417517	69061149784196711	97417	81446		
DL971	+374262	+114492	4650S	0	95417571	69208149303196672	96392	80625		
DL972	+374248	+114512	4813S	0	111417536	68923149516196651	98166	81855		
DL973	+374218	+114522	4949U	0	124417479	68767148783196607	98751	81996		
DL974	+374118	+114504	4772U	0	98417300	69045149126196462	97574	81396		
DL975	+374087	+114493	4672S	0	100417247	69201149011196416	96563	80728		
DL976	+374001	+114494	4680S	0	100417087	69194149084196291	96836	80974		
DL977	+374077	+114505	4763U	0	100417156	69002149080196300	97566	81426		

STATION IDENT.	LAT. DEG MIN	LONG. DEG MIN	ELEV. +CODE	TER-COR. IN/OUT	NORTH UTM	EAST UTM	ORSV GRAV	THEO GRAV	FAA	CBA +1000
DL978	+374087	+1145139	4868S	0	110417240	68902148741	196416	98137	81644	
DL979	+374105	+1145222	4964S	0	122417270	68779148556	196443	98830	82021	
DL980	+374017	+1145140	4924U	0	126417110	68904148339	196314	98365	81697	
DL982	+373912	+1144949	4712S	0	102416923	69189149219	196161	97402	81433	
DL983	+373949	+1145060	47539T	0	130416987	69024149099	196215	97624	81539	
DL984	+373907	+1145162	4960U	0	115416906	68876148019	196154	98544	81742	
DL985	+373896	+1145217	4990S	0	110416884	68796148154	196138	98978	82068	
DL986	+373862	+1145073	48041T	0	102416826	69009148589	196088	97711	81428	
DL987	+373820	+1144996	4755S	0	104416751	69124148725	196027	97447	81333	
DL988	+373820	+1145158	4882U	0	101416745	68885148213	196027	98130	81580	
DL989	+373776	+1145086	48100T	0	101416666	68993148030	195963	97333	81029	
DL990	+373674	+1145225	48629T	0	100416473	68793147425	195814	97380	80893	
DL991	+373692	+1145089	48090T	0	114416511	68992147649	195841	97066	80778	
DL992	+373699	+1145019	48461T	0	105416526	69095147567	195851	97322	80898	
DL993	+373706	+1144918	49071T	0	108416543	69243147276	195861	97595	80966	
DL994	+373722	+1144814	49459T	0	117416576	69396147407	195884	98070	81317	
DL995	+373726	+1144696	4995Y	0	139416587	69569148045	195890	99166	82268	
DL996	+373736	+1144605	51191T	0	159416609	69710147787	195905	100059	82759	
DL997	+373714	+1145955	4971U	0	99416523	67171479501	195873	98860	82005	
DL998	+373732	+1145822	5090U		109416561	67912147197	195899	99201	81840	
DL999	+373687	+1145640	49961T		96416484	68182147027	195834	98212	81172	
DL1000	+373728	+1145602	5052S		101416561	68236146962	195893	98614	81383	
DL1001	+373670	+1145494	4992S		95416457	68397147100	195809	98271	81245	
DL1002	+373661	+1145371	4942S	0	99416444	68579147127	195795	97841	81084	
DL1003	+373672	+1145259	4861U	0	99416468	68743147415	195812	97539	80990	
DL1004	+373729	+1145273	4920U	0	97416573	68720147414	195895	97822	81139	
DL1006	+38 776	+1145748	5537Y	0	102422193	67898146946	200345	98714	79931	
DL1007	+38 864	+1145749	5678Y	0	114422356	67893146588	200473	99553	80301	
DL1008	+38 952	+1145749	5815Y	0	126422518	67889146200	200602	100325	80618	
DL1009	+381023	+1145715	6371Y	0	265422651	67936143097	200706	102354	80889	
DL1010	+38 928	+1145655	5891Y	0	139422477	68028145896	200567	100773	80819	
DL1011	+38 853	+1145693	5788Y	0	114422337	67975146254	200457	100270	80643	
DL1013	+38 874	+1145574	5903Y	0	138422380	68148145816	200488	100885	80889	
DL1014	+38 803	+1145520	5722Y	0	125422250	68230146974	200384	100442	81051	
DL1015	+381001	+1145578	6144Y	0	173422615	68137144679	200674	101831	81049	
DL1016	+38 942	+1145520	6150Y	0	152422507	68224144412	200588	101707	80883	
DL1020	+38 805	+1145289	5487Y	0	132422262	68567148051	200387	99304	80722	
DL1021	+38 864	+1145310	5560Y	0	163422370	68534147628	200473	99482	80681	
DL1022	+38 906	+1145362	5852Y	0	136422446	68457146058	200535	100600	80776	
DL1023	+38 951	+1145308	5659Y	0	160422531	68533146679	200601	99337	80196	
DL1024	+38 998	+1145408	6039Y	0	175422615	68385144735	200670	100902	80480	
DL1027	+381048	+1145307	5823Y	0	179422710	68531146657	200743	100717	81036	
DL1029	+38 36	+1145359	5616Y	0	130420837	68497146996	199262	100589	81564	
DL1030	+38 87	+1145268	5413Y	0	120420934	68626146292	199337	99899	81557	
DL1031	+38 128	+1145400	5583Y	0	133421006	68434147309	199397	100456	81547	
DL1033	+38 173	+1145297	5354Y	0	137421092	68582148768	199463	99693	81569	
DL1034	+38 217	+1145256	5290C	0	123421175	68640149299	199527	99557	81638	
DL1035	+38 224	+1145283	5342B	0	124421187	68601148989	199537	99727	81631	
DL1036	+38 230	+1145311	5395B	2	117421197	68559148639	199546	99867	81585	
DL1037	+38 234	+1145338	5476B	0	129421204	68520148177	199552	100162	81614	
DL1038	+38 244	+1145364	5576B	0	146421221	68481147643	199566	100555	81683	
DL1042	+38 402	+1145291	5300Y	0	128421516	68581149242	199798	100077	81856	
DL1043	+38 439	+1145333	5446Y	2	99421583	68519148700	199852	100103	81629	
DL1046	+38 563	+1145355	5369T	1	111421812	68510149135	200033	99331	81240	
DL1047	+38 563	+1145437	54659T	2	93421809	68361148264	200033	99673	81125	
DL1048	+38 614	+1145399	5518Y	0	96421905	68415148025	200106	99850	81125	
DL1051	+38 691	+1145379	5430C	0	101422048	68441148391	200220	99270	80488	

STATION IDENT.	LAT. DEG MIN	LONG. DEG MIN	ELEV. +CODE	TER-COR. IN/OUT	NORTH UTM	EAST UTM	GRSV GRAV	THEO GRAV	FAA	CBA +1000
DL1052	+38 743	+114 545	55660	0	130422141	683251479562002961	100044	81190		
DL1053	+38 715	+114 554	55620	0	101422087	68204147772200255	99862	80993		
DL1054	+37 4509	+114 3837	5393Y	0	120418066	707961467681970321	100492	82218		
DL1055	+37 4504	+114 3989	5815Y	0	309418051	705731446081970241	102312	82788		
DL1056	+37 4540	+114 4286	4935Y	0	148418107	70136150419197077	99785	83101		
DL1057	+37 4515	+114 4401	4676Y	0	112418057	69968151381197041	98346	82509		
DL1058	+37 4527	+114 4491	4640C	0	97418076	69835150108197058	96716	80987		
DL1059	+37 4586	+114 4489	4650C	0	94418185	69835149916197144	96533	80767		
DL1060	+37 4590	+114 4414	4697Y	0	102418195	69945150762197150	97819	81901		
DL1061	+37 4601	+114 4320	4761Y	0	118418219	70083151409197166	99048	82928		
DL1062	+37 4563	+114 4159	5621Y	0	253418154	703211460901971111	101882	82963		
DL1063	+37 4576	+114 4077	5441Y	0	128418181	704411470121971301	101090	82661		
DL1064	+37 4592	+114 3963	5466Y	0	129418215	706071470551971531	101345	82831		
DL1065	+37 4568	+114 3888	5301Y	0	125418173	707191474471971181	100218	82263		
DL1066	+37 4576	+114 3792	5421Y	0	118418192	708591465931971301	100482	82111		
DL1067	+37 4619	+114 3853	5258Y	0	132418269	707681477161971921	100008	82207		
DL1068	+37 4696	+114 3763	5416Y	0	142418415	708961476491973051	101316	82986		
DL1069	+37 4713	+114 3880	5273Y	0	167418442	707241481411973301	100437	82620		
DL1070	+37 4694	+114 3980	5281Y	0	123418403	705781481201973021	100520	82631		
DL1071	+37 4665	+114 4075	5121Y	0	128418346	704401494551972591	100390	83052		
DL1072	+37 4625	+114 4139	5575Y	0	243418270	703471464791972011	101747	82975		
DL1073	+37 4620	+114 4236	4928Y	0	140418257	70205150541197194	99724	83056		
DL1074	+37 4637	+114 4279	4807U	0	122418287	70141151196197219	99216	82943		
DL1075	+37 4642	+114 4318	4795C	0	109418295	70084151088197226	98988	82743		
DL1076	+37 4646	+114 4345	4773C	0	105418301	70044151058197232	98745	82571		
DL1077	+37 4648	+114 4372	4744C	0	107418304	70004150926197234	98337	82263		
DL1078	+37 4652	+114 4398	4723C	0	98418310	69966150706197241	97913	81902		
DL1079	+37 4660	+114 4424	4694Y	0	98418324	69928150457197252	97380	81468		
DL1080	+37 4660	+114 4458	4671C	0	93418323	69878150111197252	96817	80979		
DL1081	+37 4661	+114 4485	4651C	0	92418324	69838149933197254	96449	80678		
DL1082	+37 4699	+114 4171	4937Y	0	137418405	70297150442197309	99595	82894		
DL1083	+37 4729	+114 4241	5424Y	0	513418458	701931469021973531	100596	82609		
DL1084	+37 4735	+114 4354	4744C	0	101418465	70027150954197362	98238	82158		
DL1085	+37 4745	+114 4439	4670Y	0	93418481	69902150123197376	96696	80861		
DL1086	+37 4749	+114 4079	5031Y	0	118418501	70430149886197382	99851	82810		
DL1087	+37 4789	+114 4156	4964Y	0	107418572	70315150020197441	99296	82472		
DL1088	+37 4782	+114 3764	5490Y	0	174418574	708911473921974301	101632	83081		
DL1089	+37 4798	+114 3828	6369Y	0	862418601	707961410981974531	103590	82729		
DL1090	+37 4861	+114 3753	5870Y	0	195418720	709031451001975451	102801	82975		
DL1091	+37 4871	+114 3845	5942Y	232	330418735	707661440691975601	102435	82730		
DL1092	+37 4789	+114 3957	5130Y	0	156418580	706071492751974411	100114	82773		
DL1093	+37 4859	+114 3949	5196Y	0	155418709	706161489781975421	100336	82769		
DL1094	+37 4810	+114 4076	4987Y	0	119418614	70431150022197471	99484	82594		
DL1095	+37 4883	+114 4071	4987Y	0	122418749	70435149796197577	99150	82262		
DL1096	+37 4931	+114 3751	5642Y	38	254418850	709031466051976481	102057	83106		
DL1097	+37 4950	+114 3852	5417Y	0	212418881	707541478871976751	101190	82927		
DL1100	+37 5120	+114 3760	5772Y	0	290419199	708811459091979231	102310	82913		
DL1101	+37 5126	+114 3785	5728Y	4	255419209	708441461251979321	102108	82831		
DL1102	+37 5152	+114 3824	5642S	0	255419256	707851465731979701	101702	82714		
DL1103	+37 5219	+114 3855	56151T	0	241419379	707371467781980681	101555	82645		
DL1104	+37 5165	+114 3854	5577Y	0	231419279	707411470201979891	101518	82728		
DL1105	+37 5181	+114 3892	5494Y	0	218419307	706841474381980131	101131	82611		
DL1106	+37 5195	+114 3921	5444Y	0	204419332	706411478421980331	101044	82680		
DL1107	+37 5208	+114 3944	5407Y	0	210419355	706071480781980521	100913	82681		
DL1108	+37 5224	+114 3965	5373Y	0	197419384	705751483791980761	100871	82742		
DL1109	+37 5234	+114 3902	5324Y	0	191419401	705351486451980901	100655	82688		
DL1110	+37 5237	+114 3902	5324Y	0	180419402	704981487801981001	100607	82657		

STATION IDENT.	LAT. DEG MIN	LONG. DEG MIN	ELEV. +CODE	TER-COR. IN/OUT	NORTH UTM	EAST UTM	ORSV GRAV	THEC GRAV	F4A	CRA +1000
DL1111	+375131	+1143870	5527Y	0	222419215	707191472331	197940101310	82681		
DL1112	+375120	+1143951	5343Y	0	185419192	706011482491	197923100610	82571		
DL1113	+375167	+1143989	5280B	0	181419278	705431487901	197992100490	82662		
DL1114	+375195	+1144088	5106Y	0	150419326	703961492531	198033 99273	82008		
DL1115	+375138	+1144059	5136Y	0	147419221	704411494081	197950 99794	82424		
DL1116	+375083	+1144054	5104Y	0	144419120	704511492331	197870 99402	82138		
DL1117	+375012	+1144033	5072Y	0	140418989	704851490341	197766 99008	81849		
DL1118	+374910	+1144002	5096Y	0	139418802	705351490331	197617 99375	82133		
DL1119	+374981	+1143922	5257Y	0	183418936	706501482301	197720 99976	82229		
DL1120	+375052	+1143951	5259Y	0	181419066	706041482811	197824 99950	82194		
DL1121	+375229	+1144227	4919B	0	127419384	701911505101	198083 98720	82070		
DL1123	+375200	+1144428	4638S	0	112419323	698971509041	198041 96511	80804		
DL1124	+375194	+1144326	4752Y	0	112419315	700471509161	198031 97605	81510		
DL1125	+375143	+1144215	4897B	0	122419225	702121504881	197957 98617	82037		
DL1126	+375068	+1144177	4901Y	0	123419088	702711503181	197848 98593	82000		
DL1127	+374963	+1144164	4829Y	0	123418894	702951504501	197695 98201	81854		
DL1128	+374874	+1144170	4925Y	0	111418729	702911502671	197564 99049	82363		
DL1129	+374949	+1144227	4849Y	0	109418866	702041506261	197674 98586	82156		
DL1130	+375028	+1144235	4821Y	0	112419012	701881507891	197789 98370	82039		
DL1131	+375081	+1144230	4945Y	0	124419110	701931501171	197866 98788	82046		
DL1132	+375108	+1144316	47510T	0	108419157	700661508651	197906 97678	81582		
DL1133	+375137	+1144391	4666Y	0	108419208	699551511521	197948 97115	81308		
DL1134	+375147	+1144494	4617S	0	105419222	698031504031	197963 95890	80247		
DL1135	+375050	+1144392	4674Y	0	101419047	699571510241	197821 97189	81348		
DL1136	+375059	+1144493	4625C	0	98419060	698081504271	197834 96117	80441		
DL1137	+374975	+1144446	4652C	0	96418906	698811506261	197712 96690	80920		
DL1138	+374995	+1144333	4727Y	0	101418947	700461509461	197741 97690	81668		
DL1139	+374952	+1144335	4736Y	0	100418867	700451508781	197678 97769	81716		
DL1140	+374875	+1144280	4886Y	21	104418727	701291504231	197566 98840	82300		
DL1141	+374875	+1144391	4696Y	1	96418723	699661506761	197566 97503	81583		
DL1142	+374824	+1144403	4696Y	0	95418628	699511507691	197491 97471	81550		
DL1143	+374917	+1144447	4648C	0	95418709	698821506461	197627 96760	81002		
DL1144	+374805	+1144291	4834Y	0	105418597	701161509501	197464 98979	82597		
DL1145	+374508	+1145335	5111Y	0	167418012	685961489521	197030100022	82757		
DL1146	+374575	+1145427	5305Y	0	218418133	684591478461	197128100645	82769		
DL1147	+374587	+1145287	5071S	0	135418160	680641492401	197145 99818	82658		
DL1148	+374636	+1145347	5158S	0	169416248	685741489231	197217100249	82825		
DL1149	+374662	+1145403	5501S	0	184418294	684901465431	197255101060	82481		
DL1150	+374644	+1145463	5810S	0	231418259	684031439131	197229101366	81780		
DL1151	+374691	+1145277	5128S	0	136418352	686741488781	197298 99841	82487		
DL1152	+374741	+1145308	5048S	0	207418444	686261495251	197370 99762	82752		
DL1153	+374745	+1145427	5916S	0	330418447	684521447221	197376103025	83178		
DL1154	+374706	+1145524	6286S	0	395418372	683111416551	197320103499	82455		
DL1155	+374771	+1145539	6708S	0	844418492	682861381991	197414103922	81887		
DL1156	+374831	+1145486	5735S	0	211418604	683611453941	197502101868	82518		
DL1157	+374819	+1145368	5345S	0	158418586	685351476231	197484100649	82577		
DL1158	+374871	+1145317	5010S	0	145418684	686081498981	197560 99487	82545		
DL1159	+374904	+1145426	5214S	0	171418741	684461489381	197608100402	82796		
DL1160	+374936	+1145521	5306S	6	160418797	683061482131	197655101059	82923		
DL1161	+374875	+1145601	5602S	2	202418682	681911465901	197566101747	82644		
DL1163	+375000	+1145552	5501S	51	188418915	682581469561	197748101545	82817		
DL1164	+374971	+1145425	5190B	0	154418865	684451491761	197706100314	82766		
DL1165	+375023	+1145397	5171Y	0	133418962	684841490641	197782 99948	82444		
DL1166	+375038	+1145328	5075Y	0	121418992	685851494821	197804 99440	82252		
DL1167	+375055	+1145259	4982S	0	115419026	686851503301	197829 99387	82510		
DL1168	+375053	+1145483	5701S	0	187419015	683571458511	197826101681	82423		
DL1169	+375078	+1145578	5728S	0	180419058	682221467571	197847102271	82756		

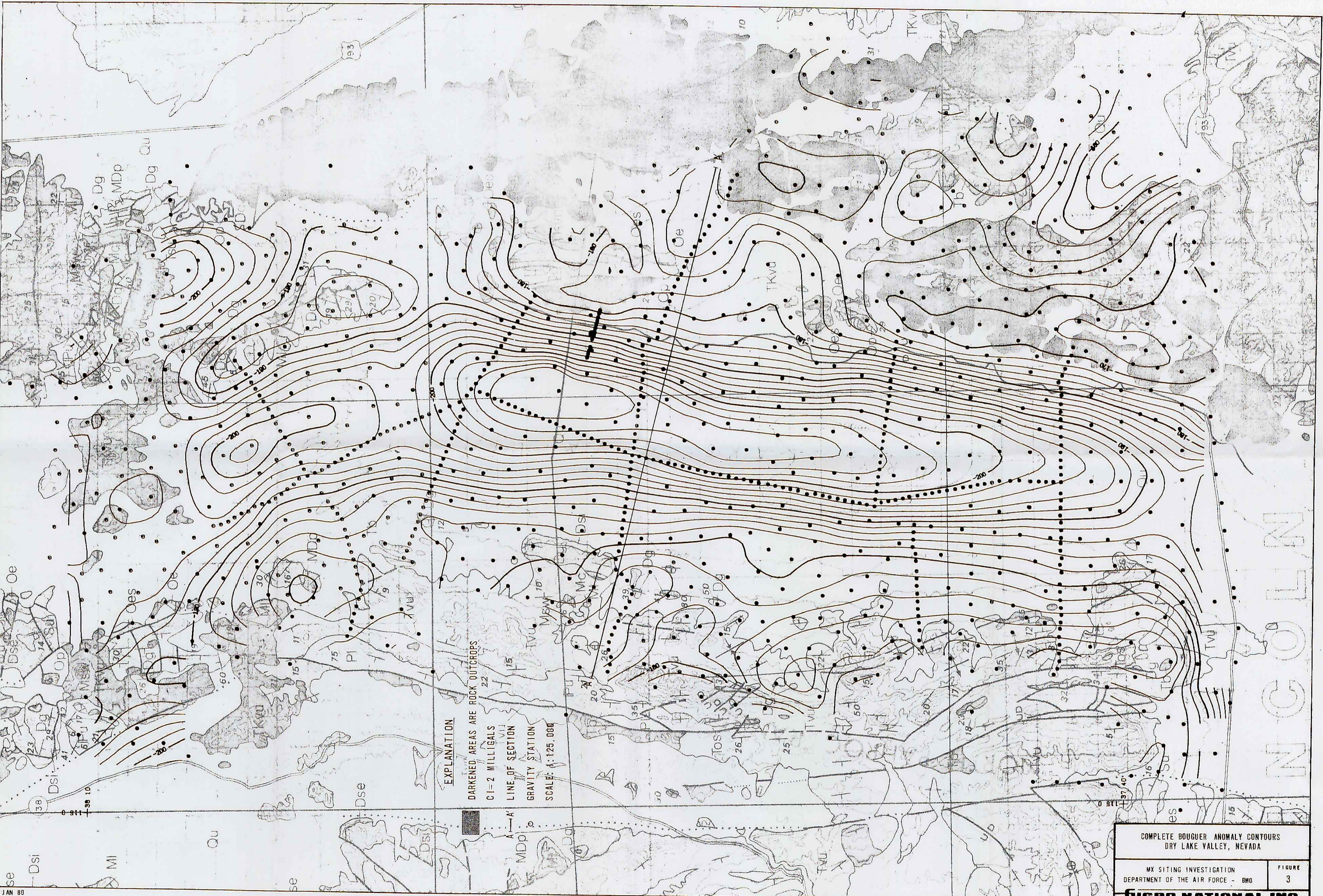
STATION IDENT.	LAT. DEG MIN	LONG. DEG MIN	ELEV. +CODE	TR-COR. IN/OUT	NORTH UTM	EAST UTM	ORSV GRAV	THEC GRAV	FAA	CRA +1000
DL1170	+375109	+114545	5478S	0	149419119	6839214746	41979081	101112	82577	
DL1171	+375104	+114532	5404S	0	201419115	6859114714	81979001	100107	81876	
DL1172	+375160	+114537	5422S	0	144419216	6851614744	61979821	100495	82146	
DL1173	+375169	+114526	5069S	0	117419237	6867615012	6197995	99836	82664	
DL1174	+375220	+114534	5169S	0	153419328	6855614899	9198070	99767	82222	
DL1175	+375199	+114544	5617S	0	162419286	6840814657	71980391	101403	82407	
DL1176	+375212	+114552	5822S	0	226419308	6829314554	21980561	102278	82647	
DL1177	+375147	+114552	5668S	0	200419187	6829714557	51979631	100957	81825	
DL1178	+375217	+114559	6917S	0	1207419314	6818313646	11980651	103501	81116	
DL1179	+375119	+114562	6502S	236	554419132	6814313982	41979221	103099	81712	
DL1180	+375033	+114564	6498S	0	691418973	6812413982	71977971	103190	81718	
DL1181	+374949	+114531	5029S	1	121418828	6861214978	7197674	99443	82413	
DL1913	+38 505	+114509	5141B	0	111421713	6887115094	9199948	99383	81959	
DL1914	+38 640	+114489	250951T	0	92421970	6915514993	7200145	97741	80455	
DL1918	+375417	+114474	34652S	0	90419713	6942615063	2198357	96054	80277	
DL1919	+374203	+114503	747520T	0	98417458	6904714939	9196585	97535	81425	
DL1961	+374525	+114468	44580U	0	87418065	6955214952	2197055	95568	80034	
DL2000	+374595	+114498	44640U	0	94418185	6910815036	2197157	96909	81163	
DL2001	+374598	+114501	14666Y	0	97418189	6906815049	6197162	97245	81428	
DL2002	+374599	+114503	84684Y	0	101418190	6902915060	3197163	97521	81646	
DL2003	+374601	+114506	4715Y	0	100418193	6899015062	1197166	97827	81846	
DL2004	+374593	+114508	94774Y	0	100418177	6895415056	1197155	98334	82151	
DL2005	+374592	+114511	54776Y	0	112418175	6891615038	9197153	98183	82005	
DL2006	+374590	+114517	84873Y	0	121418169	6882414980	5197150	98515	82016	
DL2007	+374590	+114520	4918Y	0	115418168	6878514962	8197150	98762	82103	
DL2008	+374589	+114523	24962Y	0	126418165	6874414950	1197148	99050	82252	
DL2009	+374588	+114526	05010Y	0	125418162	6870314943	2197147	99435	82472	
DL2010	+374586	+114531	35118Y	0	137418157	6862614901	3197144	100035	82716	
DL2011	+374585	+114533	85163Y	0	149418154	6858914868	5197143	100132	82672	
DL2012	+374583	+114536	5211Y	0	179418150	6854914837	8197140	100260	82686	
DL2013	+374585	+114540	25206S	0	175418152	6849514798	9197143	100594	82740	
DL2060	+373975	+114589	995200Y	0	283417008	6778914705	3196253	100303	82646	
DL2061	+374060	+114593	305552B	0	347417164	6774114537	3196377	101249	82659	
DL2062	+374127	+114592	215683B	0	248417288	6775114470	2196475	101713	82578	
DL2063	+374190	+114591	165549B	0	240417405	6775314582	6196566	101499	82913	
DL2064	+374360	+114550	085545Y	0	230417732	6834914622	9196814	101601	82918	
DL2065	+374272	+114532	245087D	0	158417576	6862214869	1196686	99876	82683	
DL2066	+375864	+114445	04764S	0	115420550	6983514964	8199011	95470	79337	
DL2067	+375852	+114442	274706S	0	117420529	6987014961	4198993	95473	79335	
DL2068	+375839	+114440	024773S	0	121420506	6990714960	3198974	95547	79389	
DL2069	+375827	+114438	14775S	0	126420484	6993614966	2198956	95643	79483	
DL2070	+375813	+114435	74790C	0	127420459	6997414976	7198936	95910	79699	
DL2071	+375790	+114431	04832C	0	136420418	7003514996	2198902	96533	80189	
DL2072	+375779	+114429	944866C	0	136420398	7006814996	7198886	96675	80414	
DL2073	+375766	+114427	224900C	0	141420375	7010014997	1198867	97217	80646	
DL2074	+375754	+114425	04932C	1	146420354	7013315001	2198850	97577	80902	
DL2075	+375742	+114422	294962C	0	154420332	7016515004	6198832	97911	81141	
DL2076	+375716	+114418	205020C	0	184420286	7023515027	2198795	98721	81784	
DL2077	+375704	+114416	045073C	0	201420265	7026715008	2198777	99048	81947	
DL2078	+375691	+114413	735164C	0	227420241	7030214961	6198758	99458	82072	
DL2222	+38 741	+114377	06388Y	0	228422197	7079014219	7200294	102027	80467	
DL3001	+373951	+114321	085301S	1	153417058	7173314650	3196218	100739	82608	
DL3002	+374312	+114345	76724S	161	474417716	7136413867	5196745	105219	82920	
DL3003	+374715	+114331	46037S	251	238418467	7155414362	7197332	103114	83012	
DL3004	+374990	+114334	446778S	7	581416974	7149713962	0197734	105082	82553	
DL3006	+375587	+114393	346444Y	5	544420056	7060414112	6198605	103171	81742	
DL3007	+375871	+114472	26677S	0	422420501	7097214902	5199921	104082	81972	

STATION IDENT.	LAT. DEG	LONG. MIN	ELEV. +CODE	TEMP-COR. IN/OUT	NORTH UTM	EAST UTM	URSV GRAV	THEO GRAV	FAA	CBA +1000
DL3008	+38	277	+1143657	7778S	2	971421343	70977133257199615106856			81301
DL3009	+38	691	+1143650	6155S	1	201422109	70967143439200220101149			80358
DL3010	+38	741	+1143706	6048S	0	154422199	70883144452200294101081			80607
DL3011	+38	1026	+1144003	6872Y	8	446422715	70436139183200711103154			80169
DL3014	+38	704	+1145796	5377Y	0	96422058	67631147777200239	98143		79899
DL3015	+38	409	+1145464	5773Y	8	129421523	68328146289199808100815			81262
DL3016	+37	5996	+1145497	6059S	115	318420758	68297144158199204101980			81747
DL3017	+37	5701	+1145334	5702S	16	174420218	68548146371198773101263			82005
DL3018	+37	5612	+1145657	5262S	1	128420043	68079148694198642	99574		81755
DL3019	+37	5350	+1145561	6660S	313	709419562	68230138747198259103172			81479
DL3021	+37	4846	+1145751	5808S	7	164418623	67972144615197523101755			82116
DL3022	+37	4434	+1145661	6590S	413	579417864	68121138318196923103422			81937
DL3023	+37	4011	+1145712	6955S	2821	1130417080	68063135029196305104187			81877
DL3024	+37	4260	+1145916	5538S	249	169417534	67753145820196669101272			82801
DL3025	+37	3833	+115 25	4988Y	0	122416741	67610148314196046	99207		82316
DL3500	+37	5522	+1144277	4707B	0	178419924	70104151380198511	97166		81291
DL3501	+37	5522	+1144277	4707B	0	178419924	70104151389198511	97178		81301
DL3502	+37	5522	+1144277	4707B	0	178419924	70104151399198511	97189		81311
DL3503	+37	5522	+1144276	4708B	0	178419924	70106151405198511	97201		81321
DL3504	+37	5522	+1144276	4709B	0	178419924	70106151408198511	97209		81327
DL3505	+37	5522	+1144275	4709B	0	179419924	70107151411198511	97220		81336
DL3506	+37	5522	+1144275	4710B	0	179419924	70107151415198511	97232		81345
DL3507	+37	5521	+1144275	4711B	0	179419922	70107151417198509	97242		81353
DL3508	+37	5521	+1144274	4712B	0	180419922	70109151422198509	97255		81365
DL3509	+37	5521	+1144274	4713B	0	180419922	70109151422198509	97264		81370
DL3510	+37	5521	+1144273	4713B	0	180419922	70110151428198509	97274		81379
DL3511	+37	5521	+1144273	4714B	0	179419922	70110151429198509	97283		81384
DL3512	+37	5521	+1144273	4715B	0	179419922	70110151431198509	97293		81392
DL3513	+37	5521	+1144272	4715B	0	181419922	70112151437198509	97302		81401
DL3514	+37	5521	+1144272	4716B	0	181419922	70112151439198509	97310		81406
DL3515	+37	5521	+1144271	4717B	0	180419922	70113151436198509	97320		81412
DL3516	+37	5521	+1144271	4718B	0	180419922	70113151441198509	97332		81420
DL3517	+37	5520	+1144271	4719B	0	179419920	70113151440198506	97343		81426
DL3518	+37	5517	+1144257	4751B	0	189419915	70134151398198503	97603		81588
DL3519	+37	5514	+1144244	4792B	0	182419910	70153151277198499	97879		81715
DL3520	+37	5511	+1144231	4831B	0	188419905	70172151165198495	98134		81845
DL3521	+37	5508	+1144218	4867B	0	199419900	70191151033198491	98343		81943
DL3522	+37	5505	+1144205	4906B	0	215419895	70211150675198486	98564		82044
DL3523	+37	5502	+1144192	4955B	0	234419890	70230150659198481	98810		82144
DL3524	+37	5522	+1144276	4706B	0	177419924	70103151380198511	97161		81285
DL3525	+37	5522	+1144278	4706B	0	177419924	70103151373198511	97149		81275
DL3526	+37	5522	+1144279	4705B	0	177419924	70101151368198511	97138		81266
DL3527	+37	5522	+1144279	4705B	0	177419924	70101151360198511	97126		81256
DL3528	+37	5523	+1144279	4704B	0	178419925	70101151353198513	97114		81246
DL3529	+37	5523	+1144280	4704B	0	176419925	70100151349198513	97105		81237
DL3530	+37	5523	+1144280	4703B	0	176419925	70100151338198513	97089		81223
DL3531	+37	5523	+1144281	4703B	0	175419925	70098151331198513	97079		81213
DL3532	+37	5523	+1144281	4703B	0	175419925	70098151323198513	97066		81202
DL3533	+37	5523	+1144281	4702B	0	175419925	70098151317198513	97056		81193
DL3534	+37	5523	+1144282	4702B	0	175419925	70097151305198513	97040		81179
DL3535	+37	5523	+1144282	4701B	0	175419925	70097151298198513	97029		81170
DL3536	+37	5523	+1144283	4701B	0	174419925	70095151291198513	97019		81159
DL3537	+37	5523	+1144283	4700B	0	174419925	70095151284198513	97008		81150
DL3538	+37	5524	+1144283	4700B	0	174419927	70095151277198513	96995		81139
DL3539	+37	5524	+1144284	4699B	0	174419927	70094151271198513	96984		81129
DL3540	+37	5524	+1144284	4699B	0	174419927	70094151266198513	96975		81121



STATION IDENT.	LAT. DEG MIN	LONG. DEG MIN	ELEV. +CODE	TER-COR. IN/OUT	NORTH UTM	EAST UTM	UBSV GRAV	THEO GRAV	FAA	CBA +1000
DL3542	+375530	+1144210	46768	0	346419941	70202150881	198523	96363	80762	
DL3543	+375533	+1144324	46728	0	162419942	70035150644	198527	96081	80310	
DL3544	+375536	+1144337	46718	0	152419947	70016150417	198531	95842	80064	
DL3545	+375539	+1144350	46728	0	145419953	69997150226	198536	95657	79868	
DL3546	+375542	+1144363	46738	0	142419958	69977150063	198540	95502	79705	
DL3547	+375530	+1144276	47078	0	179419939	70105151377	198523	97153	81277	
DL3548	+375530	+1144276	47088	0	179419939	70105151381	198523	97167	81287	
DL3549	+375529	+1144275	47098	0	180419937	70107151334	198521	97181	81299	
DL3550	+375529	+1144275	47108	0	180419937	70107151337	198521	97191	81306	
DL3551	+375529	+1144275	47118	0	180419937	70107151391	198521	97203	81316	
DL3552	+375529	+1144274	47118	0	182419937	70108151397	198521	97214	81327	
DL3553	+375529	+1144274	47128	0	181419937	70108151400	198521	97225	81334	
DL3554	+375529	+1144273	47128	0	181419937	70110151409	198521	97232	81342	
DL3555	+375529	+1144273	47138	0	181419937	70110151409	198521	97244	81349	
DL3556	+375529	+1144273	47148	0	181419937	70110151414	198521	97256	81359	
DL3557	+375529	+1144272	47158	0	182419937	70111151418	198521	97266	81367	
DL3558	+375530	+1144277	47078	0	179419939	70104151372	198523	97142	81268	
DL3559	+375530	+1144277	47068	0	180419939	70104151369	198523	97133	81262	
DL3560	+375530	+1144277	47058	0	180419939	70104151363	198523	97121	81253	
DL3561	+375530	+1144278	47058	0	178419938	70102151356	198523	97110	81241	
DL3562	+375530	+1144278	47048	0	178419938	70102151347	198523	97098	81236	
DL3563	+375530	+1144279	47048	0	179419938	70101151341	198523	97085	81221	
DL3564	+375530	+1144279	47038	0	179419938	70101151336	198523	97073	81211	
DL3565	+375530	+1144279	47028	0	179419938	70101151329	198523	97061	81202	
DL3566	+375530	+1144280	47028	0	177419938	70099151321	198523	97051	81190	
DL3567	+375531	+1144280	47028	0	178419940	70099151314	198524	97037	81179	



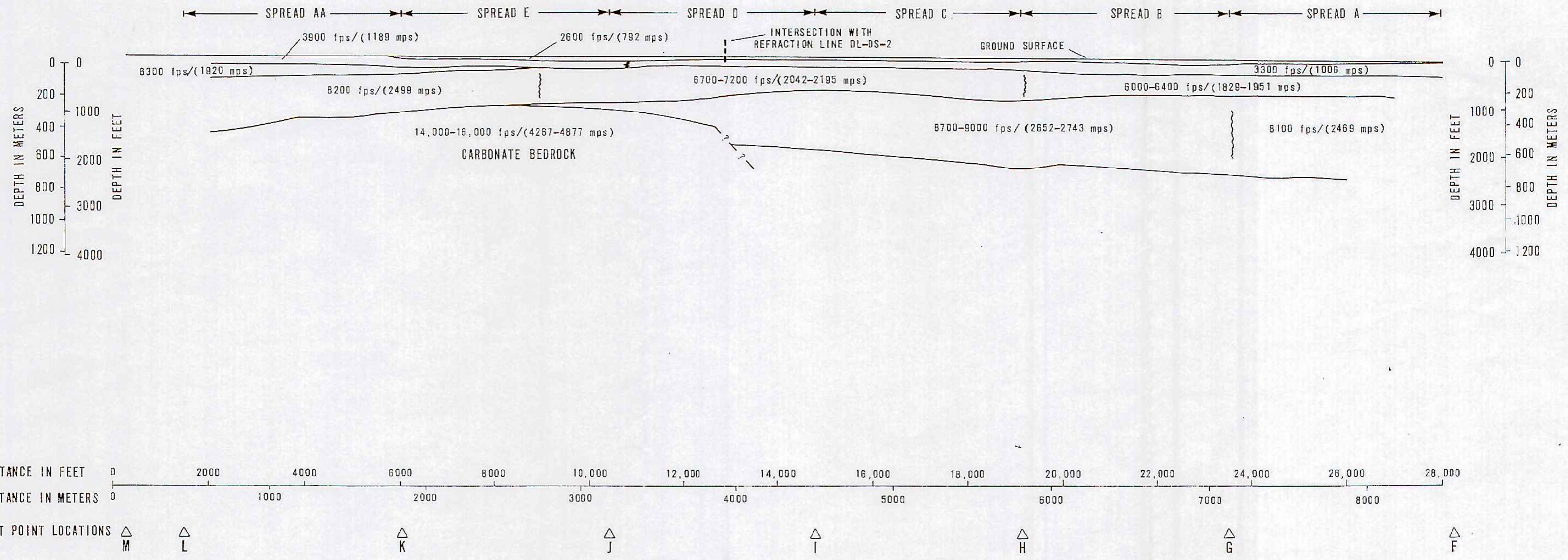


**EXPLANATION**  
 DARKENED AREAS ARE ROCK OUTCROPS  
 CI=2 MILLIGALS  
 LINE OF SECTION  
 GRAVITY STATION  
 SCALE: 1:125,000

COMPLETE BOUGUER ANOMALY CONTOURS DRY LAKE VALLEY, NEVADA	
MX SITING INVESTIGATION DEPARTMENT OF THE AIR FORCE - BMD	FIGURE 3
<b>FUGRO NATIONAL, INC.</b>	

### VELOCITY PROFILE SEISMIC REFRACTION LINE DL-DS-1

S 28° E



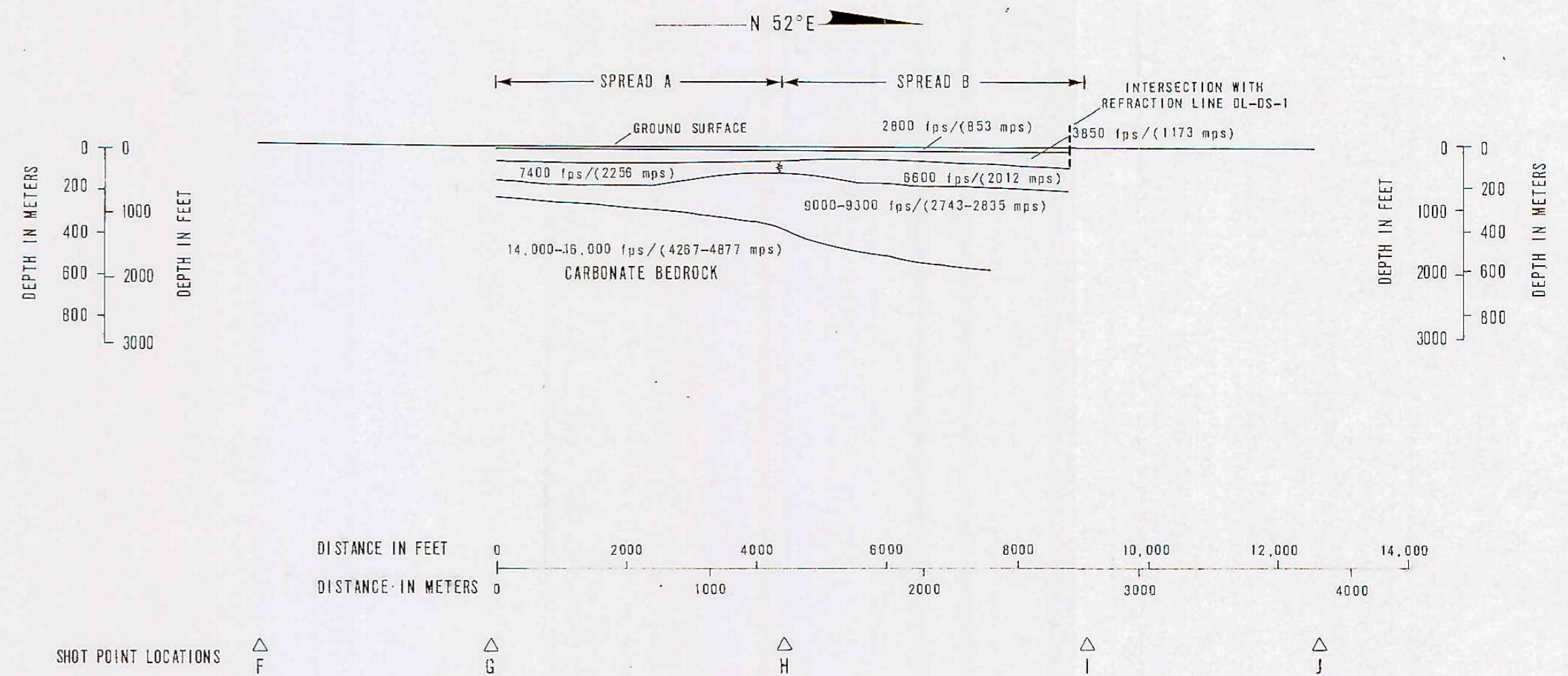
VELOCITY PROFILE,  
SEISMIC REFRACTION LINE DL-DS-1  
DRY LAKE VALLEY NEVADA

MX SITING INVESTIGATION  
DEPARTMENT OF THE AIR FORCE - BMD

FIGURE  
4

**FUGRO NATIONAL, INC.**

### VELOCITY PROFILE SEISMIC REFRACTION LINE DL-DS-2

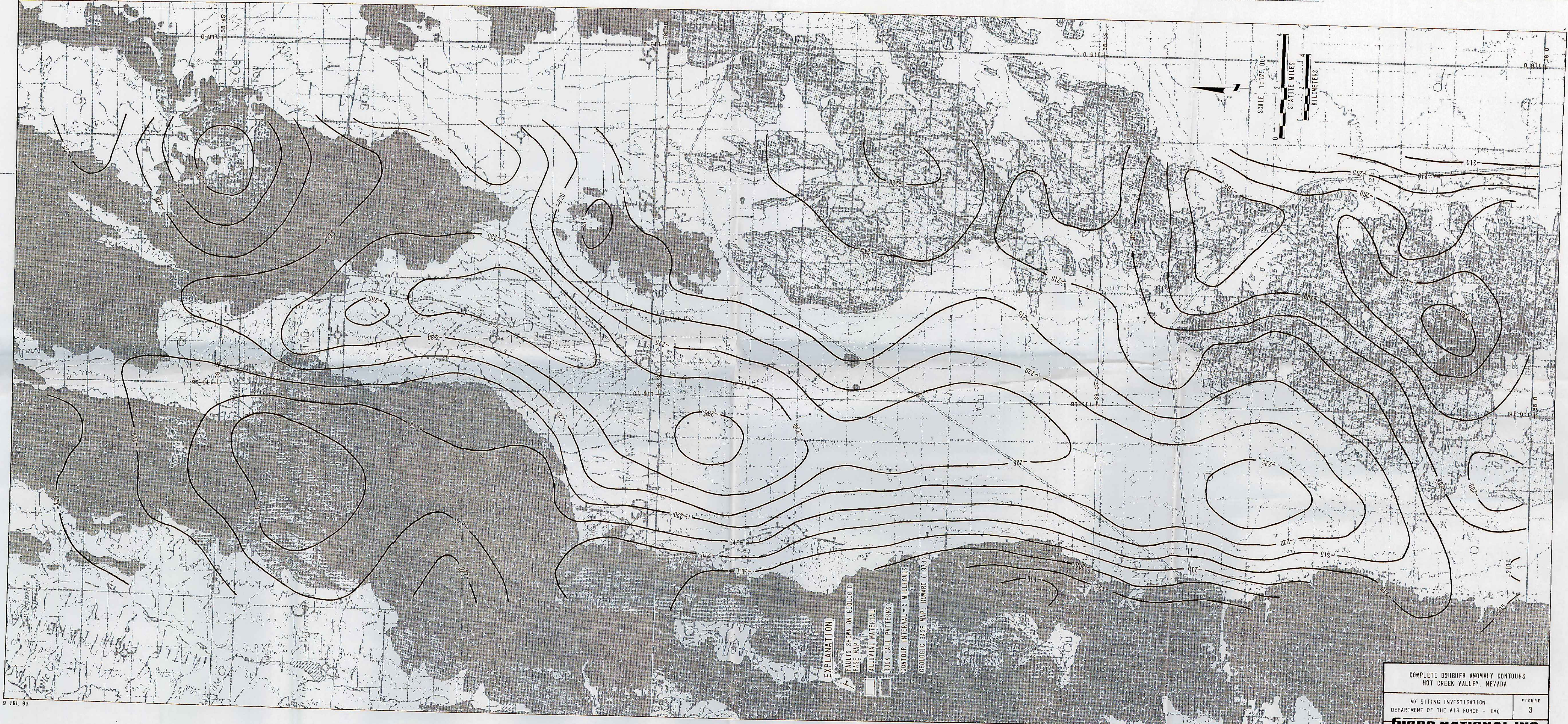


VELOCITY PROFILE  
SEISMIC REFRACTION LINE DL-DS-2  
DRY LAKE VALLEY, NEVADA

MX SITING INVESTIGATION  
DEPARTMENT OF THE AIR FORCE - SAMS0

FIGURE  
5

**FUGRO NATIONAL, INC.**



**EXPLANATION**

- FAULTS SHOWN ON GEOLOGIC BASE MAP
- ALLOUVIAL MATERIAL
- ROCK (ALL PATTERNS)
- CONTOUR INTERVAL = 5 MLLIGALS
- GEOLOGIC BASE MAP: HOWARD (1976)

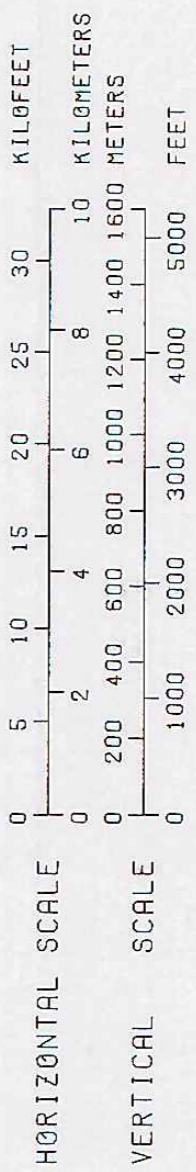
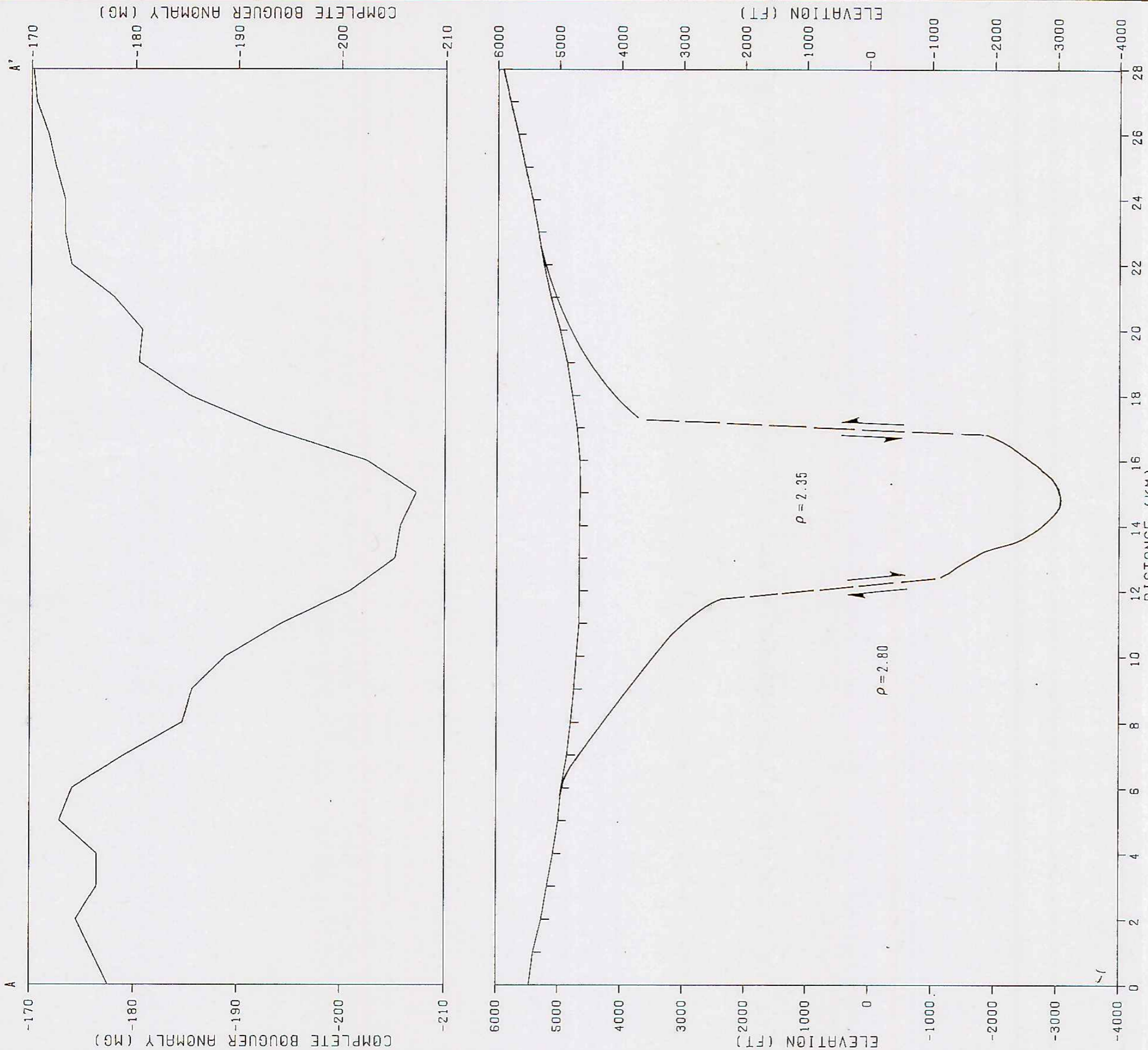
SCALE 1:125,000

STATUTE MILES

KILOMETERS

COMPLETE BOUGUER ANOMALY CONTOURS HOT CREEK VALLEY, NEVADA	
MX SITING INVESTIGATION DEPARTMENT OF THE AIR FORCE - DMO	FIGURE 3
<b>UGRO NATIONAL, INC.</b>	

ESE



EXPLANATION

- TOP COMPLETE BOUGUER ANOMALY (INTERPOLATED) (—)
- BOTTOM ELEVATION: INTERPOLATED SURFACE ELEVATIONS (—)
- MODEL OF BEDROCK SURFACE (---)
- DENSITY VALUES ( $\rho = 2.3$ ) g cm<sup>3</sup>
- DISTANCE SCALE 1:125,000

CROSS-SECTIONAL VIEW, PROFILE AA'	
DRY LAKE VALLEY, NEVADA	
MX SITING INVESTIGATION DEPARTMENT OF THE AIR FORCE - BMO	FIGURE 7

**UGRO NATIONAL, INC.**