

STATE OF NEVADA
DEPARTMENT OF CONSERVATION AND NATURAL RESOURCES
DIVISION OF WATER RESOURCES

ADAM SULLIVAN, P.E.
STATE ENGINEER



STATEWIDE GROUNDWATER PUMPAGE INVENTORY

CALENDAR YEAR 2021

October 28, 2025

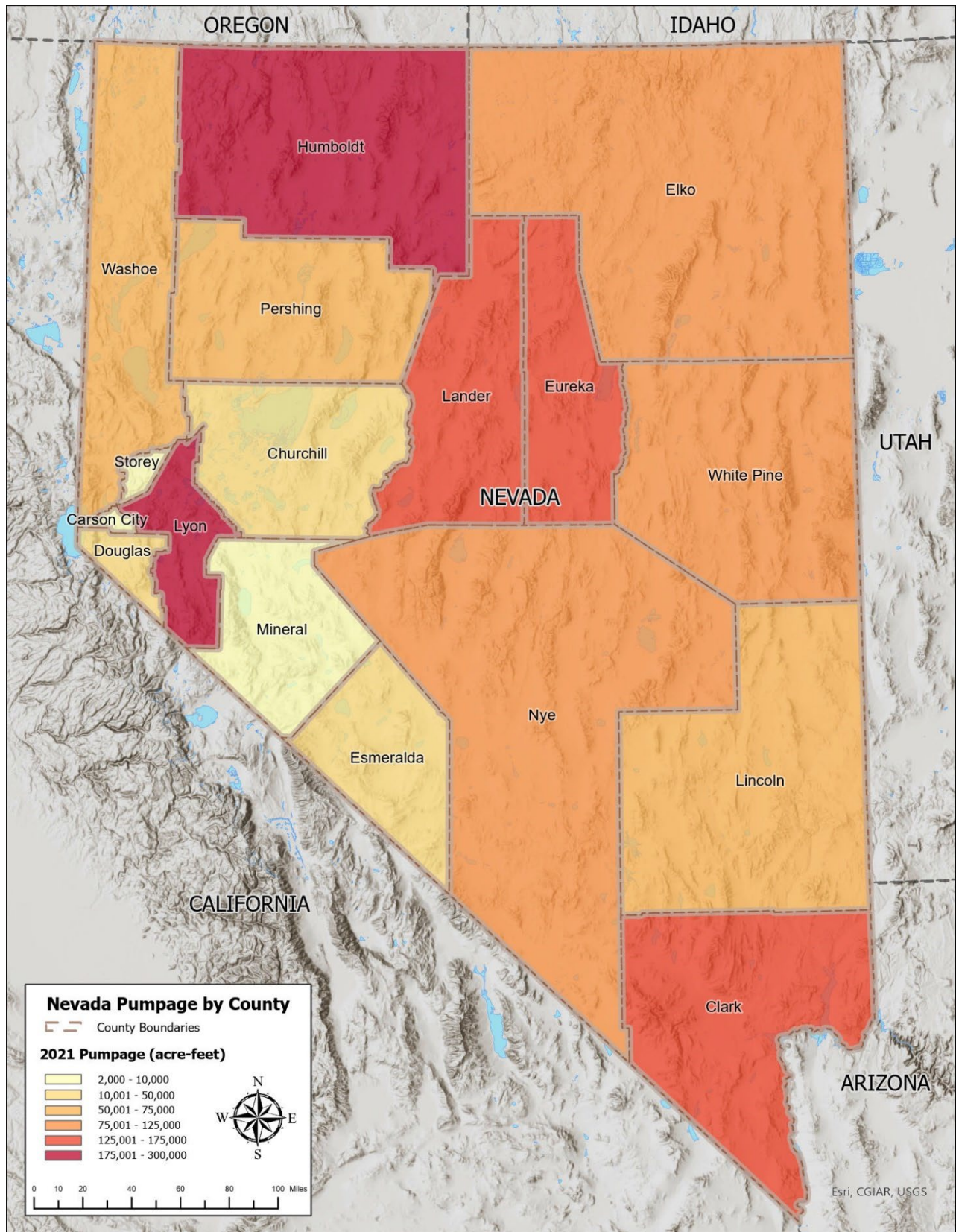


TABLE OF CONTENTS

	Page
ABSTRACT.....	1
STATEWIDE SUMMARY	2
PURPOSE AND SCOPE.....	3
SOURCES OF DATA AND METHODS TO ESTIMATE PUMPAGE	3
IRRIGATION	4
MINING AND MILLING.....	5
DOMESTIC	5
OTHER MANNERS OF USE	5
TABLES	6
FIGURES	7
APPENDIX A. GROUNDWATER PUMPAGE BY BASIN AND MANNER OF USE.	35

LIST OF TABLES

	Page
Table 1. Estimated 2021 groundwater pumpage (acre-feet) by county and manner of use.....	6

LIST OF FIGURES

	Page
Figure 1. Comparison between committed water resources and pumpage for 2021 by manner of use.	2
Figure 2. Estimated 2021 groundwater pumpage (acre-feet) graphed by county and manner of use.	7
Figure 3. Groundwater wells in Carson City	8
Figure 4. Groundwater wells in Churchill County.....	9
Figure 5. Groundwater wells in Clark County.....	10
Figure 6. Groundwater wells in Douglas County.	11
Figure 7. Groundwater wells in Elko County.	12
Figure 8. Groundwater wells in Esmeralda County.....	13
Figure 9. Groundwater wells in Eureka County.	14
Figure 10. Groundwater wells in Humboldt County.	15
Figure 11. Groundwater wells in Lander County.	16
Figure 12. Groundwater wells in Lincoln County.	17

Figure 13. Groundwater wells in Lyon County.	18
Figure 14. Groundwater wells in Mineral County.	19
Figure 15. Groundwater wells in Nye County.	20
Figure 16. Groundwater wells in Pershing County.	21
Figure 17. Groundwater wells in Storey County.	22
Figure 18. Groundwater wells in northern Washoe County.	23
Figure 19. Groundwater wells in southern Washoe County.	24
Figure 20. Groundwater wells in White Pine County.	25
Figure 21. Carson City pumpage by manner of use.	26
Figure 22. Churchill County pumpage by manner of use.	26
Figure 23. Clark County pumpage by manner of use.	27
Figure 24. Douglas County pumpage by manner of use.	27
Figure 25. Elko County pumpage by manner of use.	28
Figure 26. Esmeralda County pumpage by manner of use.	28
Figure 27. Eureka County pumpage by manner of use.	29
Figure 28. Humboldt County pumpage by manner of use.	29
Figure 29. Lander County pumpage by manner of use.	30
Figure 30. Lincoln County pumpage by manner of use.	30
Figure 31. Lyon County pumpage by manner of use.	31
Figure 32. Mineral County pumpage by manner of use.	31
Figure 33. Nye County pumpage by manner of use.	32
Figure 34. Pershing County pumpage by manner of use.	32
Figure 35. Storey County pumpage by manner of use.	33
Figure 36. Washoe County pumpage by manner of use.	33
Figure 37. White Pine County pumpage by manner of use.	34

ABSTRACT

This report presents an estimate of the total amount of groundwater pumped in the State of Nevada for calendar year 2021. The estimate includes pumpage of all public waters appropriated by permits and certificates issued by the State Engineer, by adjudicated and unadjudicated pre-statutory claims of vested right, and by domestic wells. Primary sources of data were existing inventories, pumpage records from water right owners, duty of water rights, and known irrigated acres. Methods to estimate pumpage from these data sources are described herein. The pumpage amounts are organized by manner of use and presented by county and hydrographic basin. Graphs showing the pumpage for each county are included in this report, as well as maps showing the location of groundwater wells within each county. Groundwater sources defined in this report do include geothermal waters, whereas, surface water use is not included.

Total groundwater pumpage in Nevada for calendar year 2021 is estimated to be approximately **1,300,000 acre-feet**. The largest manner of use is irrigation at 67% of total statewide pumpage. Other large uses are municipal (10%) and mining and milling (8%). Pumpage by domestic wells is estimated to be approximately 3% of total statewide pumpage.

STATEWIDE SUMMARY

Committed water resource data for the State are summarized by manner of use below. Actual groundwater pumpage totals for calendar year 2021 are presented by manner of use in Figure 1.

COMMITTED GROUNDWATER RESOURCE: 3,084,869 ACRE-FEET

DATE: December 2021

COMMERCIAL	29,880	CONSTRUCTION	1,768	DOMESTIC ¹	102,454
ENVIRONMENTAL	21,024	EVAPORATION	488	INDUSTRIAL	140,718
IRRIGATION	1,779,507	MINING & MILLING	396,609	MUNICIPAL	381,830
OTHER	18,236	POWER	49,609	QUASI-MUNICIPAL	93,225
RECREATION	26,310	STOCKWATERING	24,282	WILDLIFE	18,927

Note: Committed groundwater resource data are accurate for December 2021. Manner of use totals vary over time, as rights are not necessarily static. Individual rights may be subject to change applications, certification, withdrawals, and cancellations; each of these circumstances could affect the duty, diversion rate, and acreage associated with a given right. The value associated with each manner of use category does not include those portions that have been relinquished in support of domestic wells, but does include groundwater supplemental to surface water.

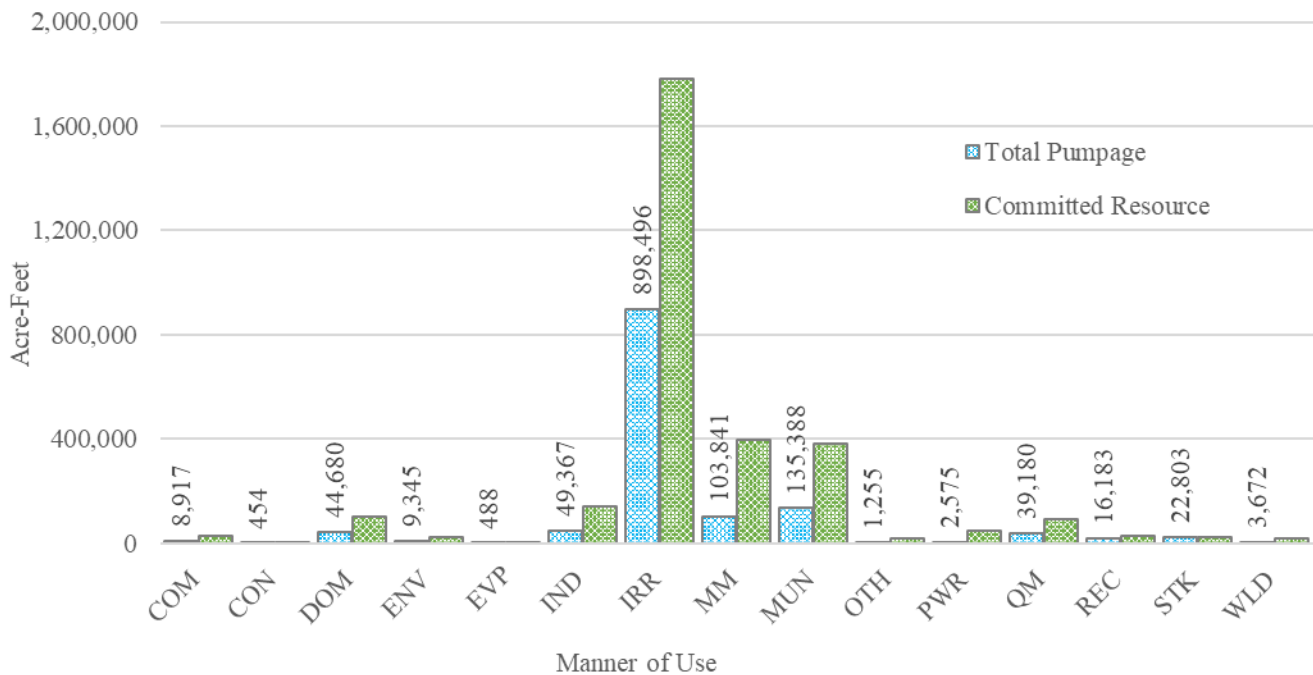


Figure 1. Comparison between committed water resources and pumpage for 2021 by manner of use.

¹ Committed domestic resource was calculated by multiplying the number of exempt domestic wells by 2 acre-feet per annum. The total number of domestic wells, determined by a query of the Nevada Division of Water Resources Well Log Database, is estimated to be 51,227.

PURPOSE AND SCOPE

The purpose of this report is to inventory all the groundwater use allocated and described by the Office of the State Engineer, Nevada Division of Water Resources (NDWR). The estimated amount of groundwater pumped under permits, certificates, adjudicated and unadjudicated vested claims, and exempt domestic wells within the State of Nevada for calendar year 2021 is described in the following sections.

The U.S. Geological Survey (USGS) publishes groundwater use for all states at 5-year intervals. The most recent publication, Estimated Use of Water in the United States County-Level Data for 2015², was released in 2018 and summarizes pumpage in each state by county for the year 2015. The USGS has recently shifted its focus and asked Science Centers to work with individual states to develop pumpage datasets at a finer temporal resolution. NDWR is cooperating with the USGS to release a historical pumpage dataset, with completion planned for 2026. In general, the methods used by the USGS and other Science Centers to estimate pumpage are different from the methods used by NDWR and therefore the reports are not directly comparable.

SOURCES OF DATA AND METHODS TO ESTIMATE PUMPAGE

NDWR conducts annual pumpage and crop inventories for numerous individual hydrographic basins throughout the State. All reported data were incorporated into this statewide assessment. If inventories were completed for water year instead of calendar year, then water year totals were used to estimate calendar year totals. Methods describing the estimation of water usage are contained in each of these inventory reports.

Pumpage totals are often recorded by water right owners and reported to NDWR as a condition of the permit under which the groundwater was appropriated. Where these data were available, it was accounted for in this statewide report. If 2021 reported pumpage was not available but reported pumpage from several prior years was reasonably consistent, then total pumpage data from the most recent year was used. For some permitted mine dewatering and geothermal development where a substantial volume of water was recharged into the aquifer and that volume was reported to the State Engineer, the recharged water was subtracted to obtain the total pumpage presented in this report. For purposes of allocating pumpage by county and hydrographic basin, all pumpage was assigned to its permitted point of diversion.

Supplemental group relationships were resolved prior to estimating groundwater pumpage for all manners of use. Where supplemental groups contained permits with multiple manners of use, the estimated pumpage was assigned to the manner of use associated with the senior permit in the group.

Table 1 and Figure 2 present statewide pumpage data, broken down by county and manner of use. Figures 3 to 20 present maps showing groundwater wells for individual counties; Figures 21 to 37 show manner of use data for each county.

² Dieter, C.A., Linsey, K.S., Caldwell, R.R., Harris, M.A., Ivahnenko, T.I., Lovelace, J.K., Maupin, M.A., and Barber, N.L., 2018, Estimated Use of Water in the United States County-Level Data for 2015 (ver. 2.0, June 2018): U.S. Geological Survey data release, <https://doi.org/10.5066/F7TB15V5>.

IRRIGATION

For annual inventoried basins outside of the Humboldt River Basin Region where irrigation pumpage that was not inventoried or reported, pumpage was estimated by using 2022 National Agriculture Imagery Program (NAIP) imagery and normalized difference vegetation index (NDVI) data. Maximum NDVI was used to determine where crops were irrigated between May 1 and September 30, 2021, using the web-based Climate Engine³ tool. Year 2022 NAIP imagery was used to determine the number of acres under cultivation and the method in which the water was applied (pivot, wheel line, flood). Assumed efficiencies were 0.85 for pivot, 0.75 for wheel lines, and 0.60 for flood. Pumpage was then determined by multiplying the number of acres by the net irrigation water requirement rate (either for low-managed pasture grass or alfalfa, depending on whether the crops appeared to be sparse or full-cover and well-watered)⁴, then dividing by the efficiency of the application method. If the resulting pumpage estimate exceeded the duty of the right, then duty was used as total pumpage. If the maximum NDVI indicated that irrigation occurred during the period of inquiry, it was assumed that irrigation occurred over the entire season.

For all non-inventoried basins and the Humboldt River Basin Region, irrigation pumpage that was not inventoried or reported was estimated by using 2021 OpenET (<https://etdata.org>) satellite-based evapotranspiration (ET) data. The OpenET value measures actual evapotranspiration from multiple satellite-driven models, and calculates a single “ensemble value” for pre-drawn field boundaries or custom drawn polygons monthly for a given calendar year. ET rates are multiplied by the polygon area to estimate the amount of water applied in acre-feet annually.⁵

For comingled places of use (POUs) where partial meter data was present, metered pumpage was subtracted from the total amount of water applied as estimated by the cumulative ensemble ET over the defined irrigated acreage. The difference between applied water from calculated cumulative ensemble ET and metered pumpage was then assigned to the non-metered senior permit(s) for the group.

Many small irrigation rights had POUs that were too small to be reasonably represented at the 30 x 30 meter spatial resolution of the Landsat satellite data used in the Climate Engine or OpenET application. If such POUs were irrigated based on the Climate Engine or OpenET data, and the well was known to be in use, the permitted duty was assigned as the pumpage amount. Field notes and photos were consulted to determine if the well was in use. If the well was not in use, pumpage was assigned as zero.

Groundwater pumpage that was permitted or certificated as a supplemental right to surface water, and was not inventoried or reported, was estimated based on streamflow in 2021. Groundwater pumpage supplemental to springs was assumed to be 50% statewide. Note that 2021 was a below average water year compared the previously published 2017 Statewide Groundwater Pumpage Inventory.

³ Huntington, J., Hegewisch, K., Daudert, B., Morton, C., Abatzoglou, J., McEvoy, D., and Erickson, T. (2017). Climate Engine: Cloud Computing of Climate and Remote Sensing Data for Advanced Natural Resource Monitoring and Process Understanding. Bulletin of the American Meteorological Society, <http://journals.ametsoc.org/doi/abs/10.1175/BAMS-D-15-00324.1>

⁴ Huntington, J.L., and Allen, R.G. 2010. Evapotranspiration and net irrigation water requirements for Nevada. Nevada Division of Water Resources; http://water.nv.gov/mapping/et/Docs/Evapotranspiration_and_Net_Irrigation_Requirements_for_Nevada_Compiled.pdf.

⁵ Volk, J.M., Huntington, J.L., Melton, F.S. *et al.* Assessing the accuracy of OpenET satellite-based evapotranspiration data to support water resource and land management applications. *Nat Water* **2**, 193–205 (2024). <https://doi.org/10.1038/s44221-023-00181-7>

MINING AND MILLING

Groundwater use for mining and milling projects was estimated by basin and county primarily by reviewing reported pumpage and recharge data (where applicable). Where these data were not available, permits, records from the Nevada Division of Minerals, and NAIP imagery were examined to determine whether the project appeared to be operating. If the projects appeared operational, duty was assigned as pumpage. If the project did not appear operational, pumpage was estimated to be zero. Included in consumptive use estimates are evaporative or enhanced evapotranspiration losses due to discharge of groundwater pumped for dewatering to rapid infiltration basins, for irrigation, or to surface water, where these data were available.

DOMESTIC

Domestic use was estimated based on the number of active domestic wells in each basin. This number was determined by querying the NDWR Well Log Database, and multiplying the resulting number of wells by the appropriate number of acre-feet per year. In most basins, the assumed annual pumpage for each well is one acre-foot; however, in some of the inventoried basins, the assumed annual pumpage is less than one acre-foot per well.

OTHER MANNERS OF USE

For all other manners of use that were not inventoried or reported, pumpage was estimated by a query of the NDWR Permits Database for water rights that were certificated, permitted with a proof of completion filed, or claimed as pre-statutory vested rights. If water rights were known to be inactive based on examination of the permit file or other records, it was assumed that no pumpage occurred in 2021. Otherwise, pumpage was estimated to be the annual duty associated with the permit, certificate, or claim.

TABLES

Table 1. Estimated 2021 groundwater pumpage (acre-feet) by county and manner of use.

Manner of Use	COM	CON	DOM	ENV	EVP	IND	IRR	MM	MUN	OTH	PWR	QM	REC	STK	WLD	Total
Carson City	12	0	1,085	0	0	6	105	0	5,729	0	0	48	0	2	0	6,987
Churchill	686	1	4,330	151	0	16,707	4,289	8	3,897	0	737	2,274	131	1,373	326	34,909
Clark	1,204	18	4,998	3,309	0	2,849	4,354	2,563	59,384	105	0	13,875	5,337	149	81	98,226
Douglas	130	0	5,423	17	0	441	14,798	0	10,336	101	0	3,542	780	138	1,260	36,966
Elko	698	15	3,749	14	0	3,756	59,313	1,044	13,318	215	0	1,474	402	7,953	18	91,969
Esmeralda	42	0	231	0	0	0	29,752	12,264	114	0	0	126	209	202	0	42,940
Eureka	18	55	250	0	0	1,736	80,554	33,440	98	0	0	168	0	2,053	0	118,372
Humboldt	650	24	2,060	0	488	5,363	241,798	7,172	2,897	174	0	653	806	2,862	76	265,022
Lander	2	0	624	1,295	0	2,660	95,995	26,867	1,048	0	1,187	220	273	1,216	0	131,387
Lincoln	653	0	513	0	0	13	55,845	13	3,153	9	0	53	40	1,289	8	61,588
Lyon	1,583	11	3,761	0	0	11,843	131,608	1,067	8,791	0	0	1,964	4,007	184	283	165,101
Mineral	31	0	94	57	0	72	4,002	242	1,079	514	0	1,891	0	323	304	8,610
Nye	1,863	8	6,488	0	0	754	47,904	7,894	5,092	46	0	2,793	2,988	2,026	8	77,865
Pershing	573	0	546	14	0	0	42,173	2,212	1,197	0	0	91	2	518	7	47,333
Storey	7	0	954	0	0	832	0	42	230	0	0	1,839	0	0	14	3,919
Washoe	712	322	8,828	4,488	0	2,319	20,546	1,108	16,995	90	652	6,669	1,178	681	1,225	65,812
White Pine	53	0	746	0	0	14	65,462	7,906	2,032	0	0	1,500	31	1,834	62	79,639
Total Pumpage	8,917	454	44,680	9,345	488	49,367	898,496	103,841	135,388	1,255	2,575	39,180	16,183	22,803	3,672	1,336,646

FIGURES

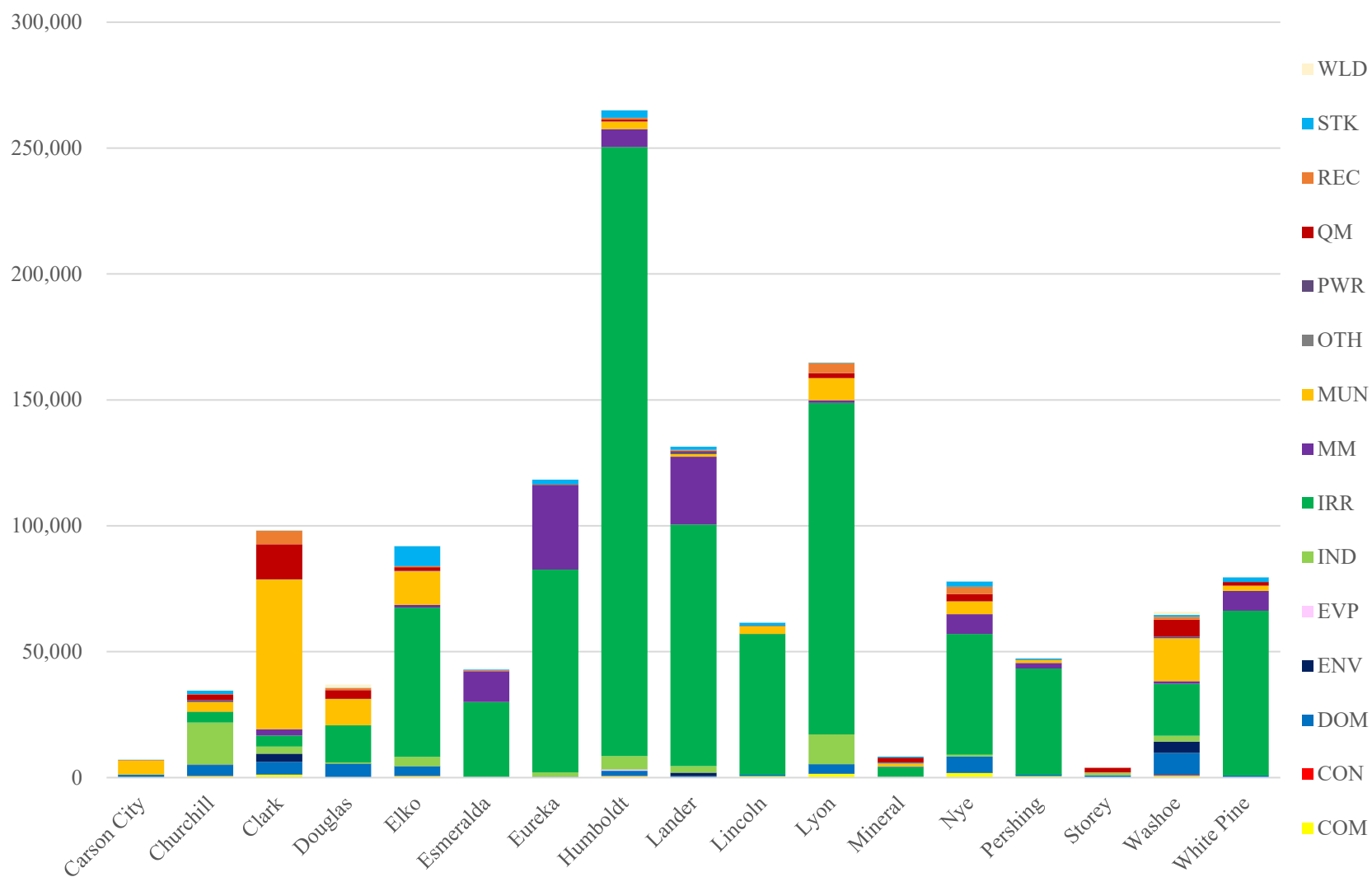


Figure 2. Estimated 2021 groundwater pumpage (acre-feet) graphed by county and manner of use

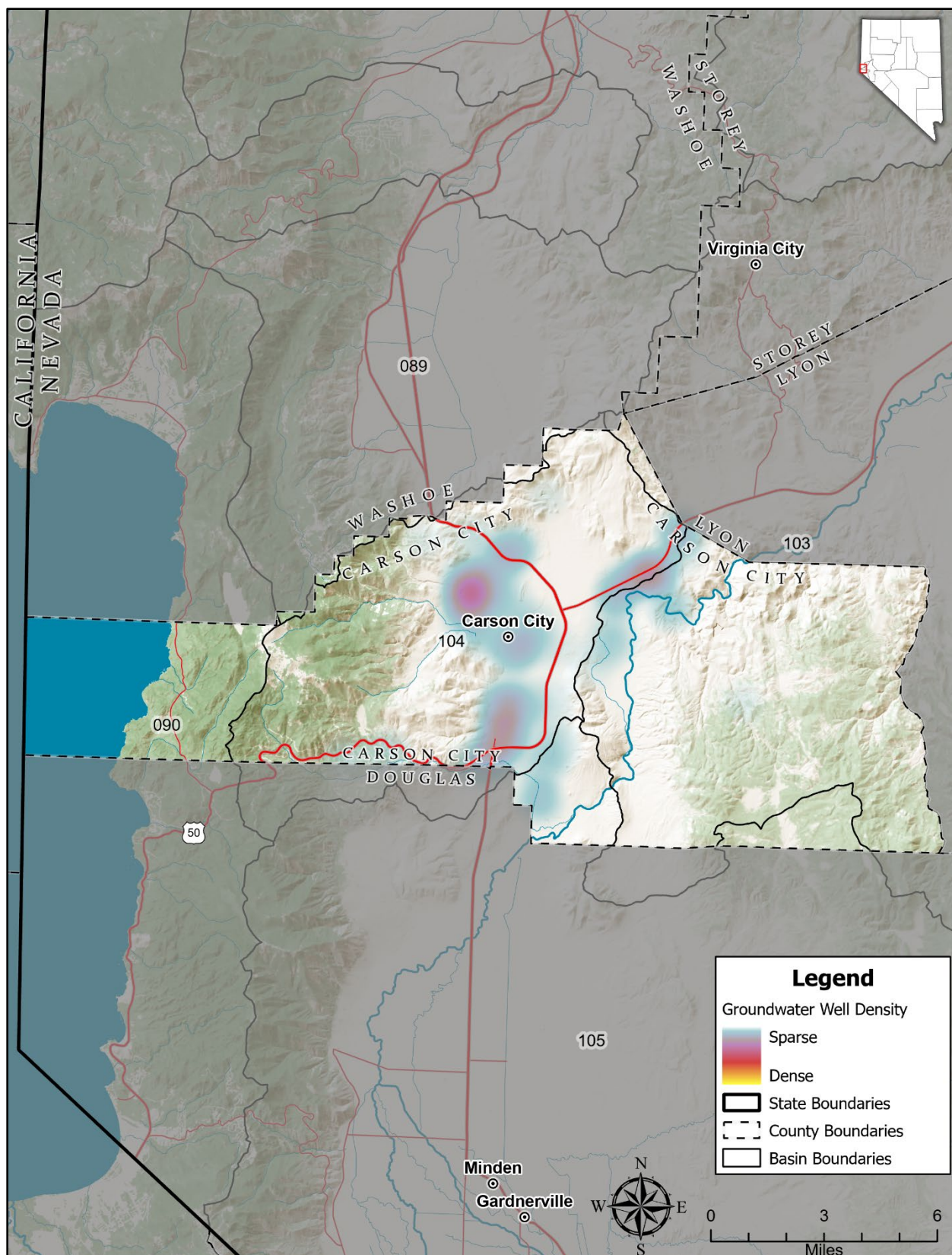
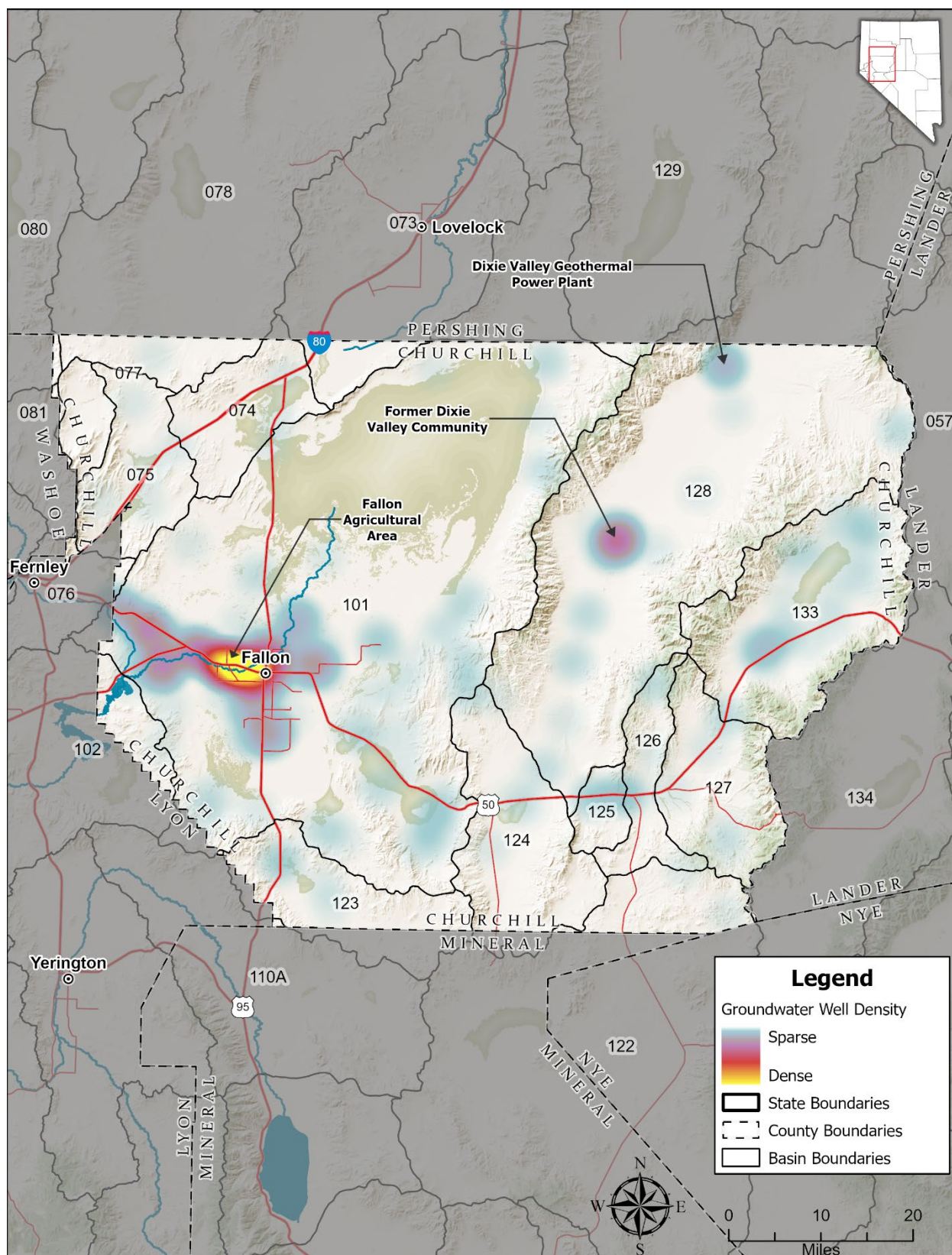


Figure 3. Groundwater wells in Carson City.



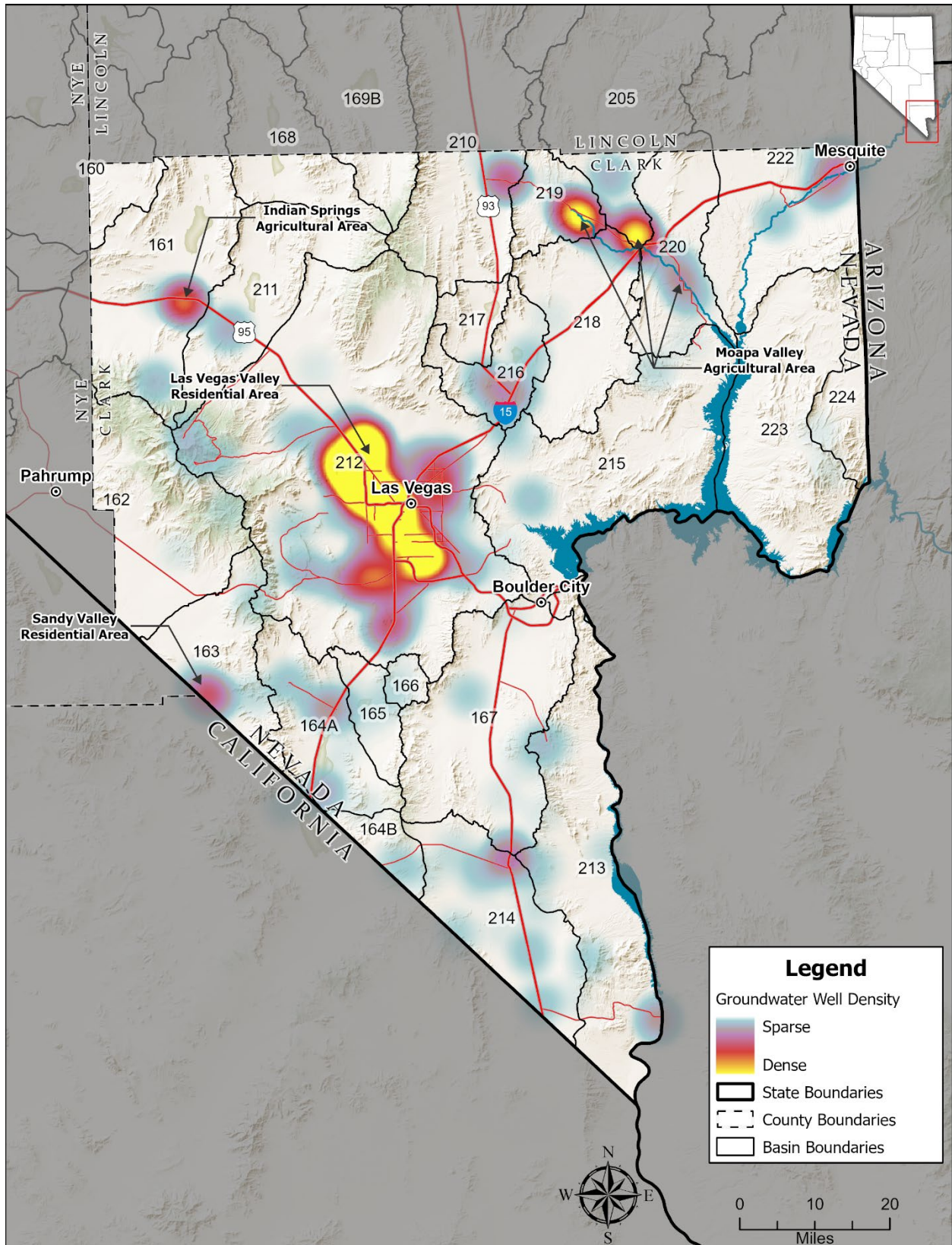


Figure 5. Groundwater wells in Clark County.

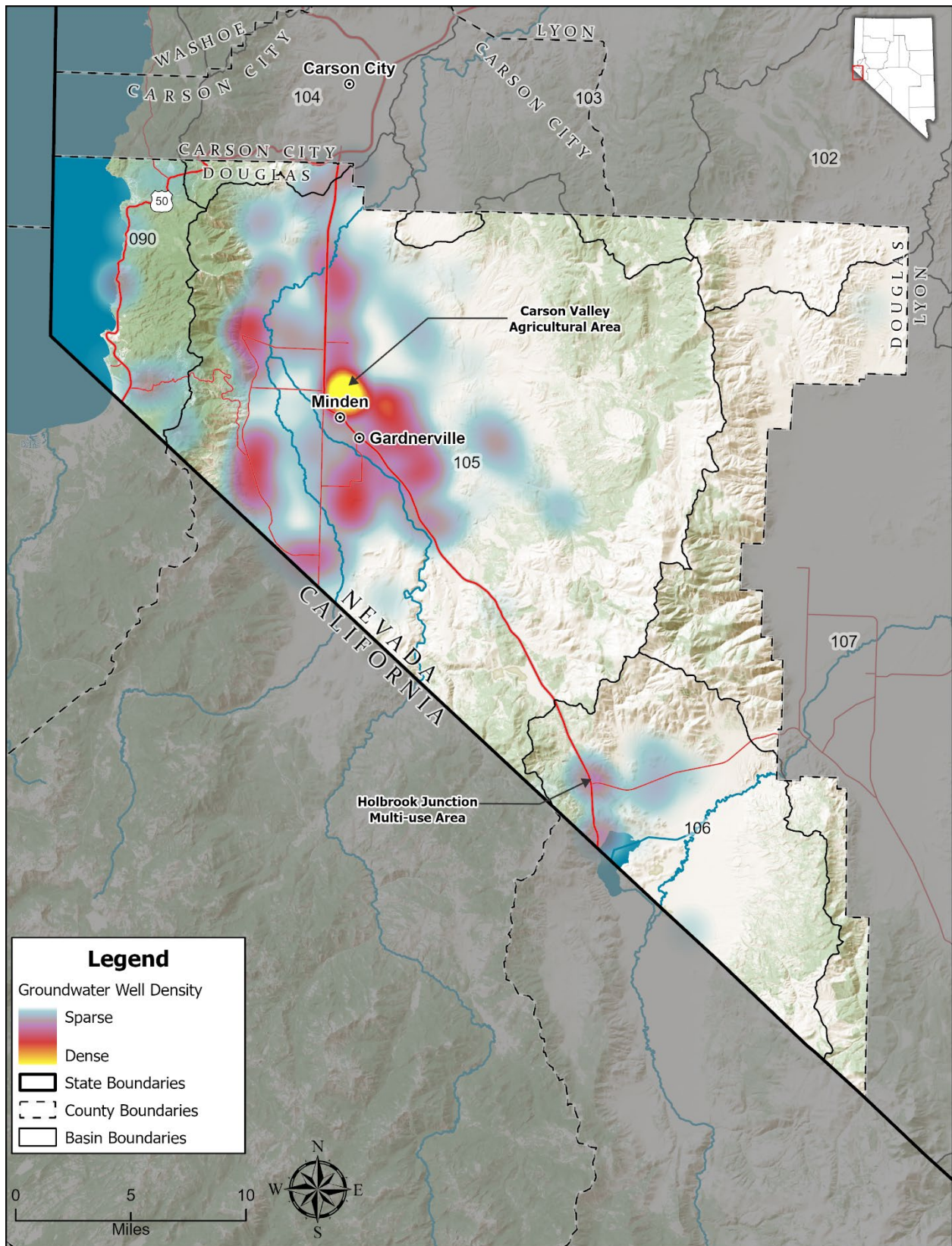


Figure 6. Groundwater wells in Douglas County.

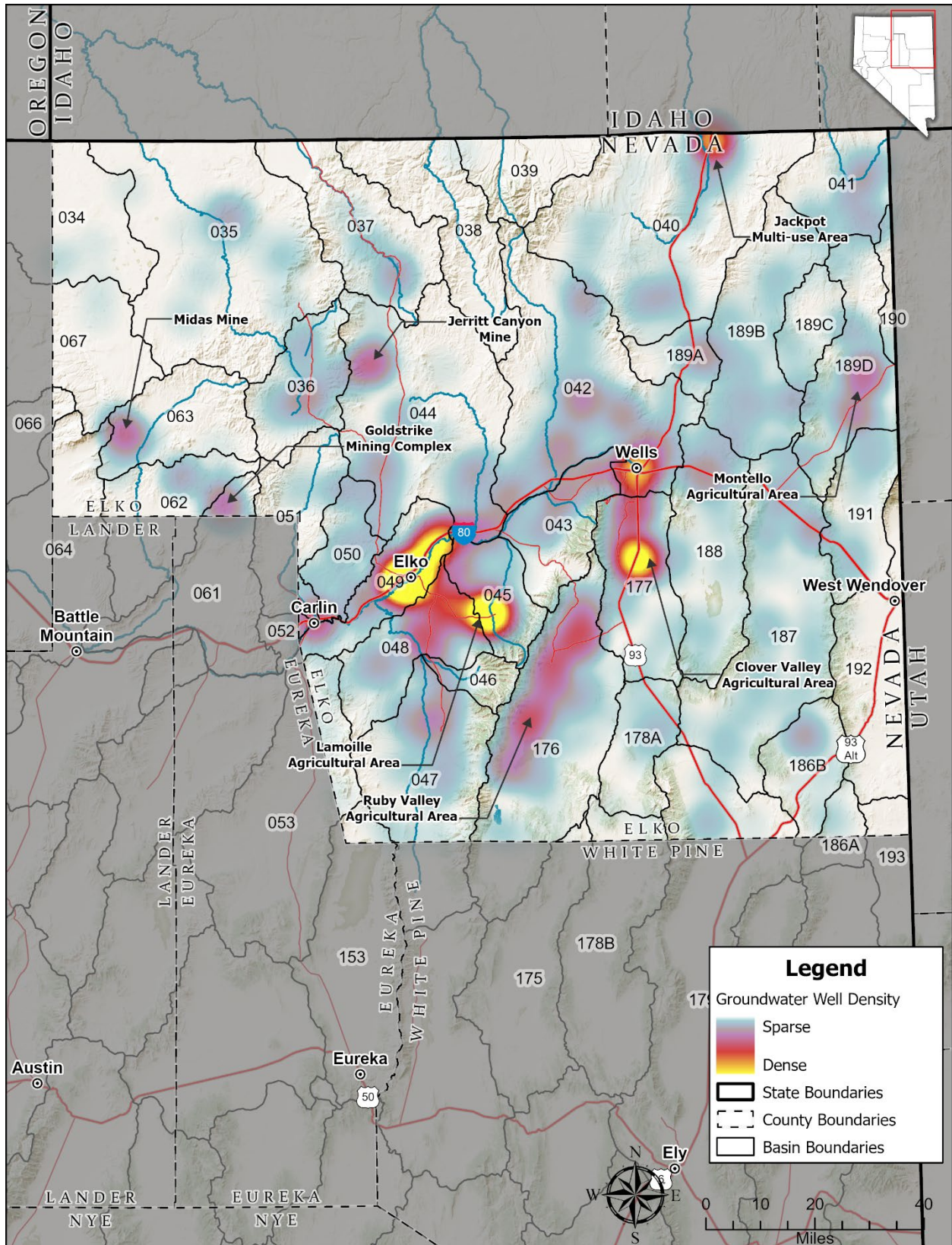


Figure 7. Groundwater wells in Elko County.

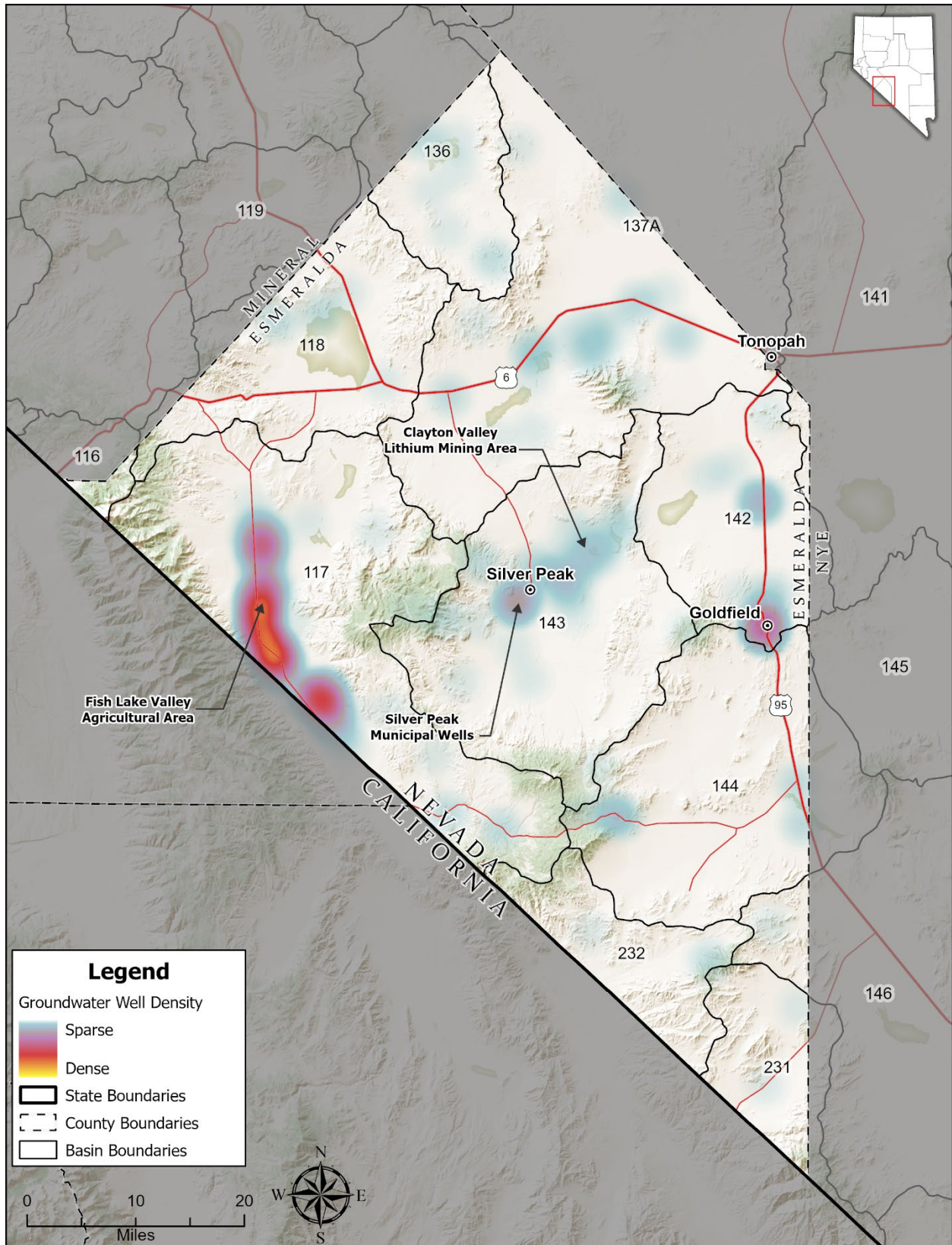


Figure 8. Groundwater wells in Esmeralda County.

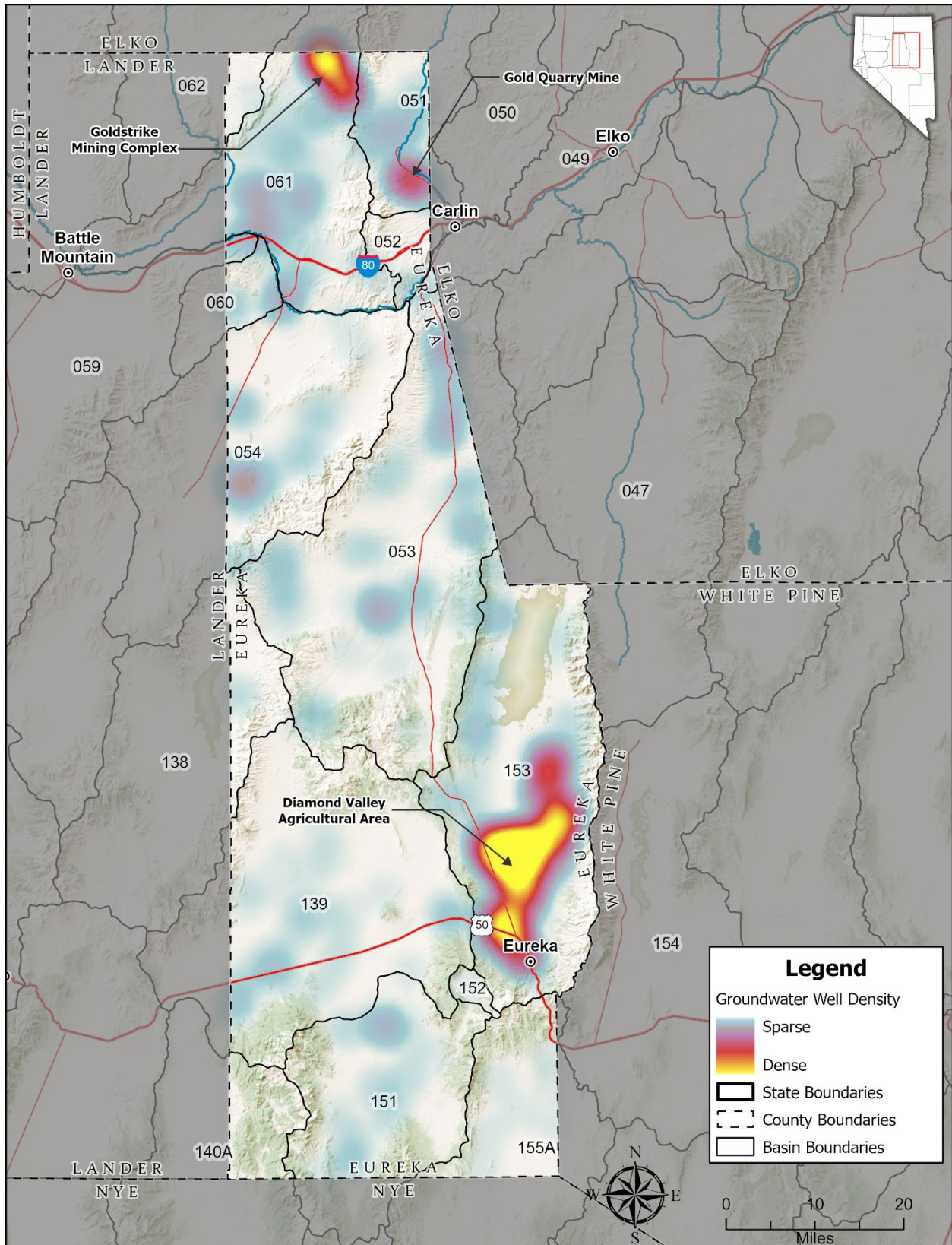


Figure 9. Groundwater wells in Eureka County.

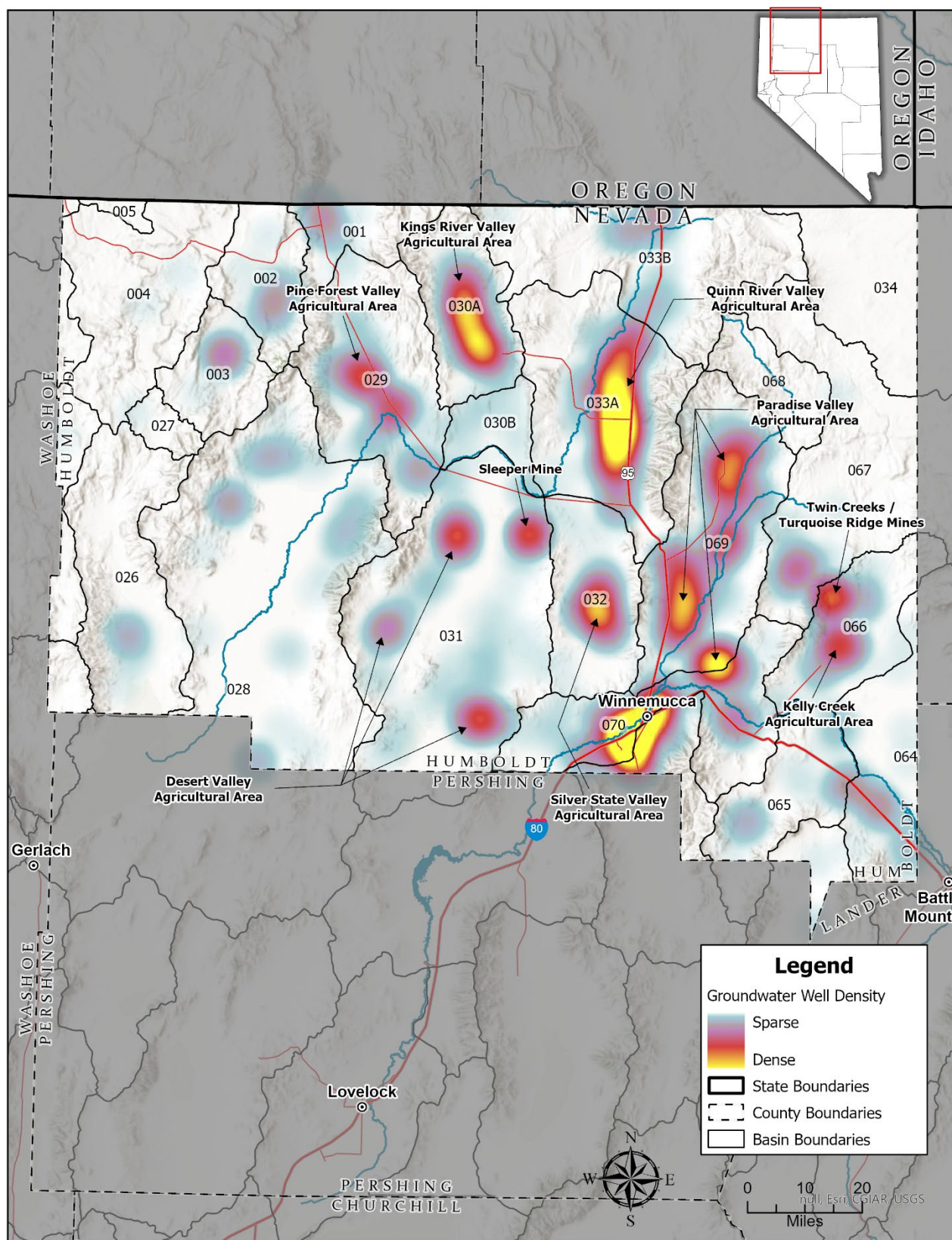


Figure 10. Groundwater wells in Humboldt County.

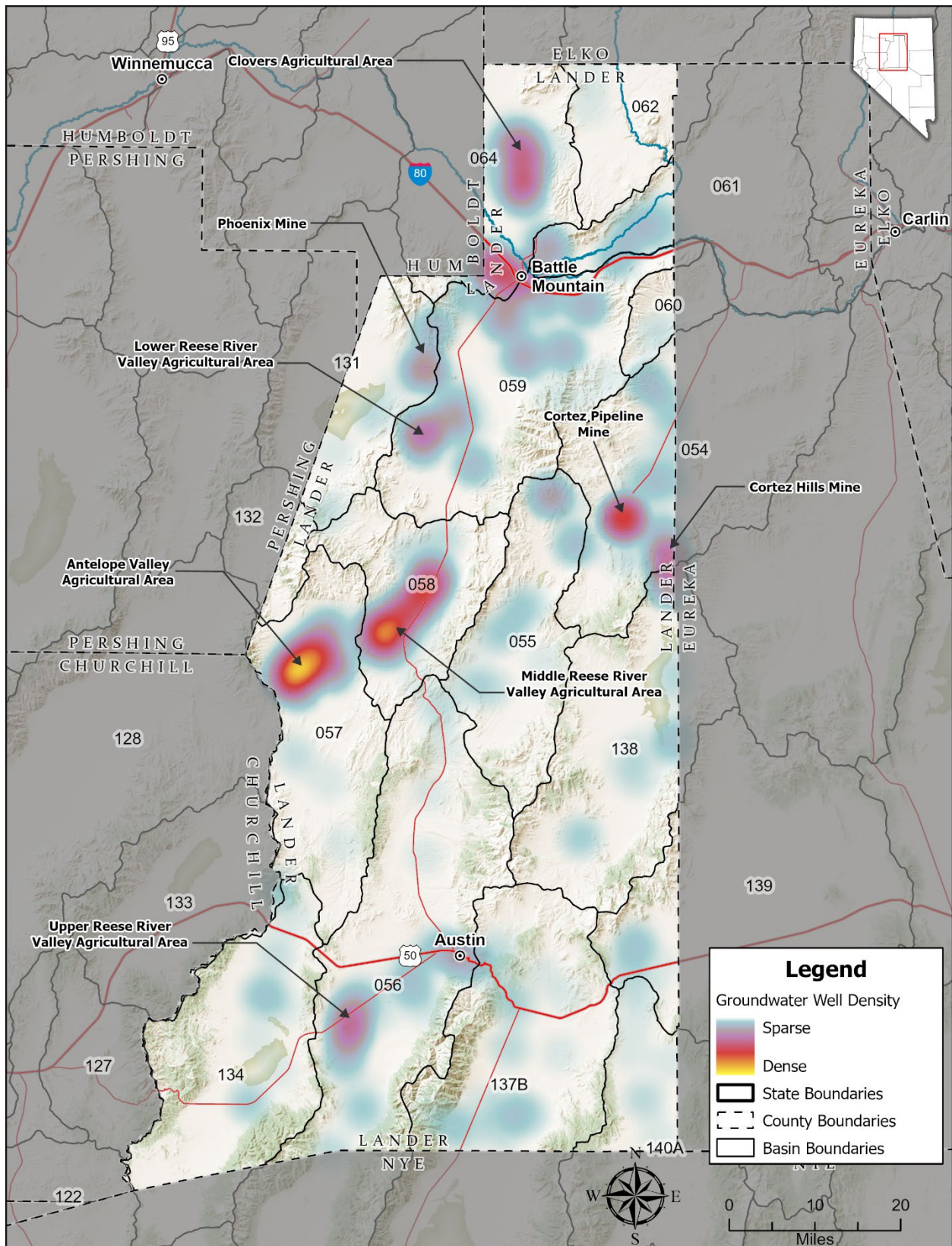


Figure 11. Groundwater wells in Lander County.

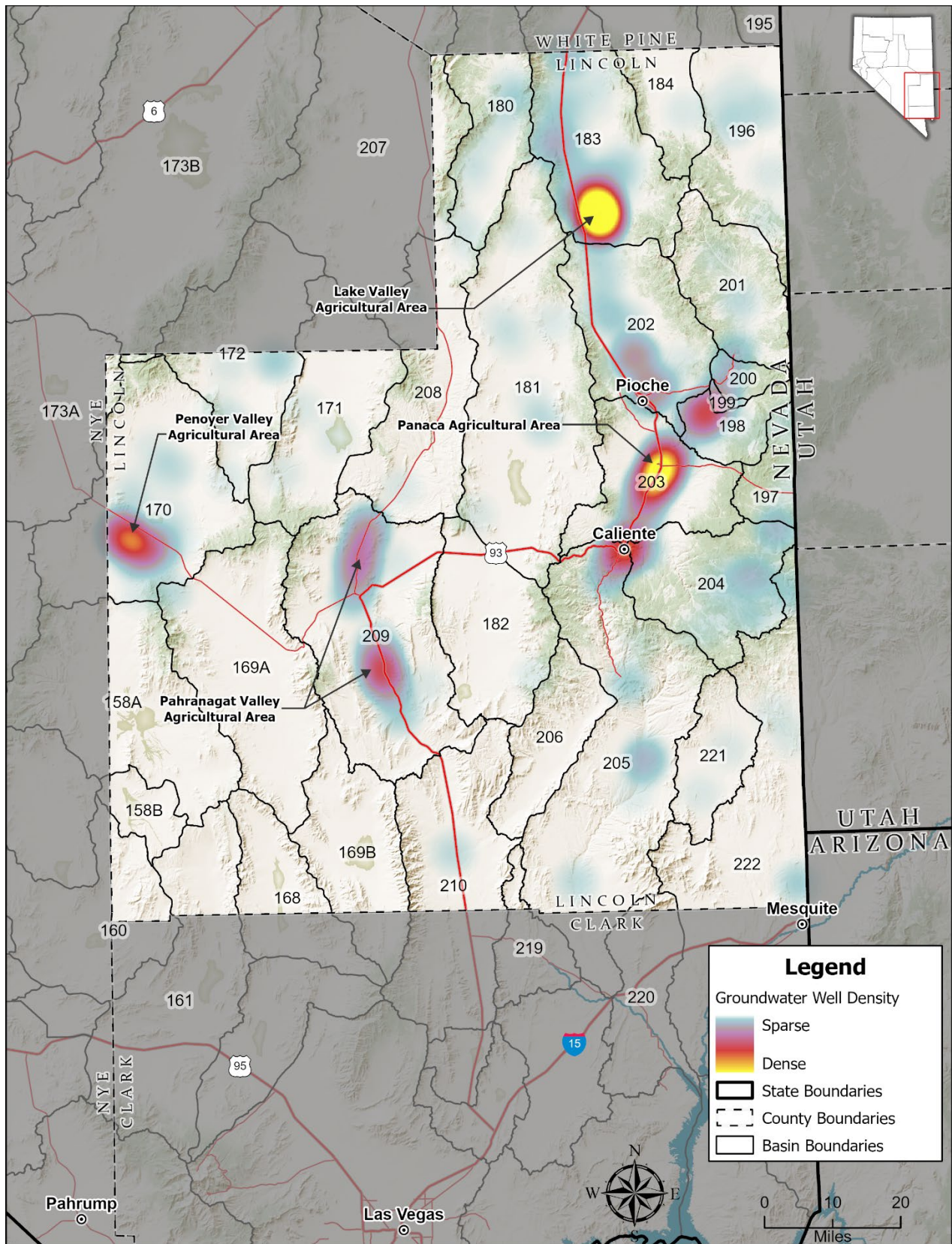


Figure 12. Groundwater wells in Lincoln County.

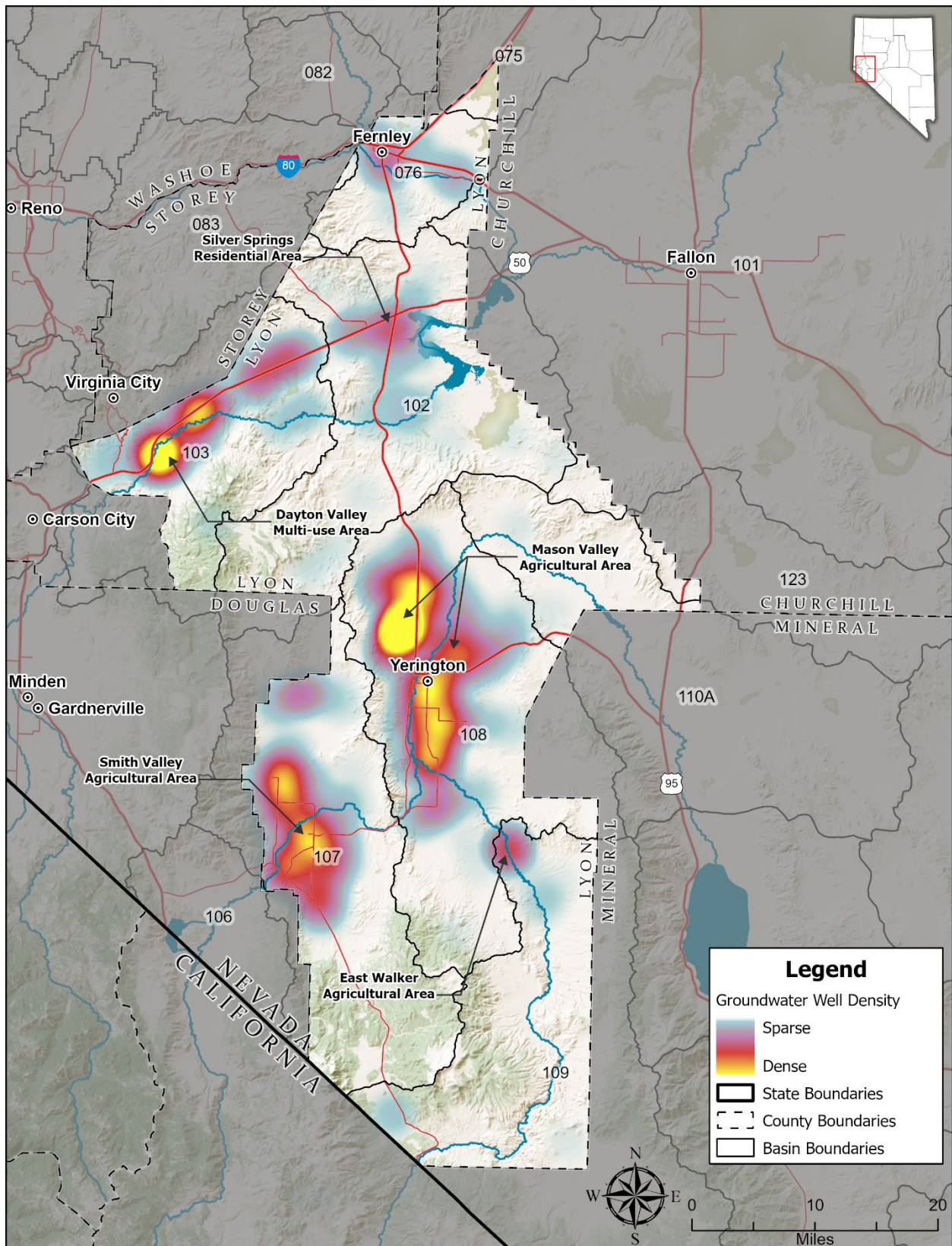


Figure 13. Groundwater wells in Lyon County.

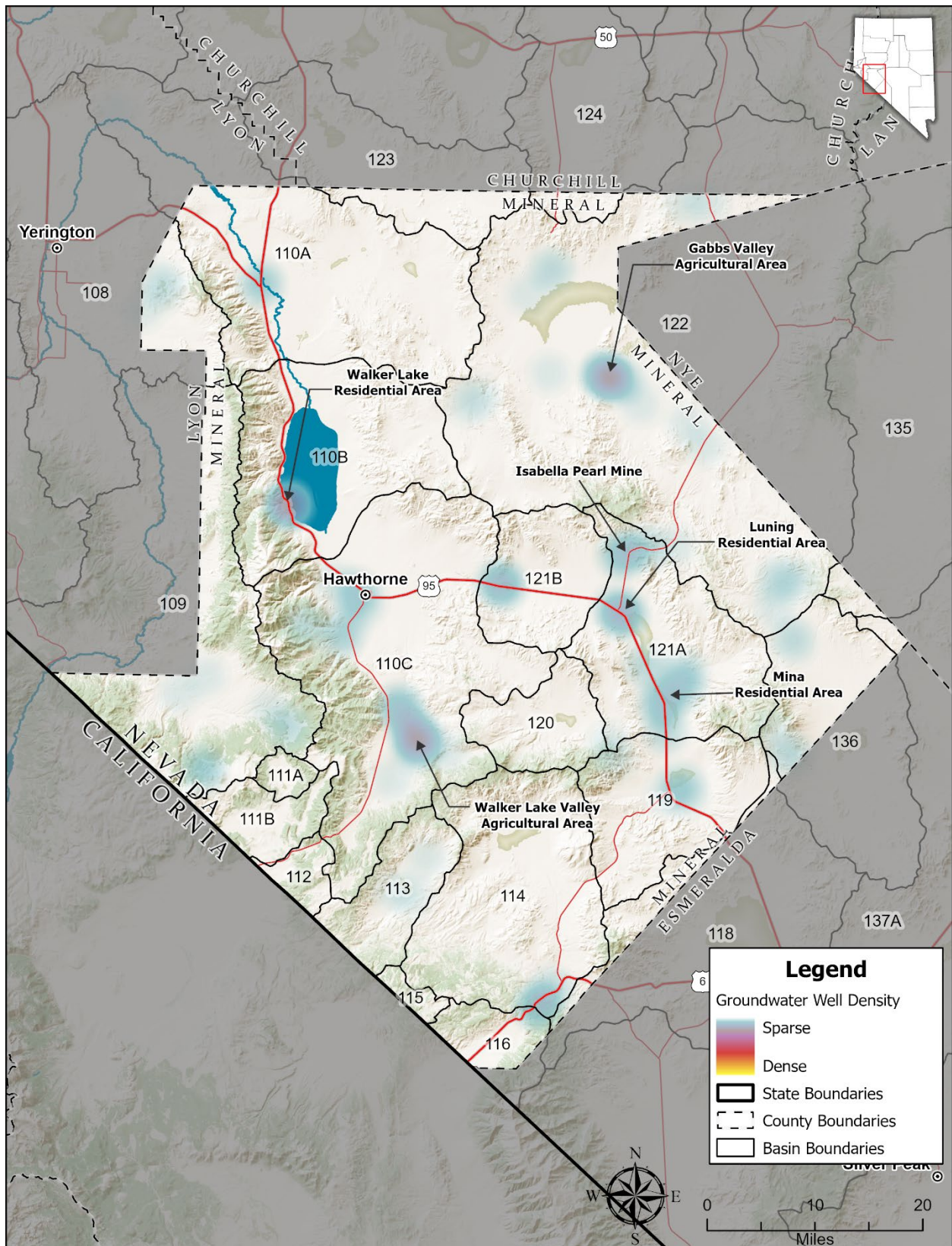


Figure 14. Groundwater wells in Mineral County.

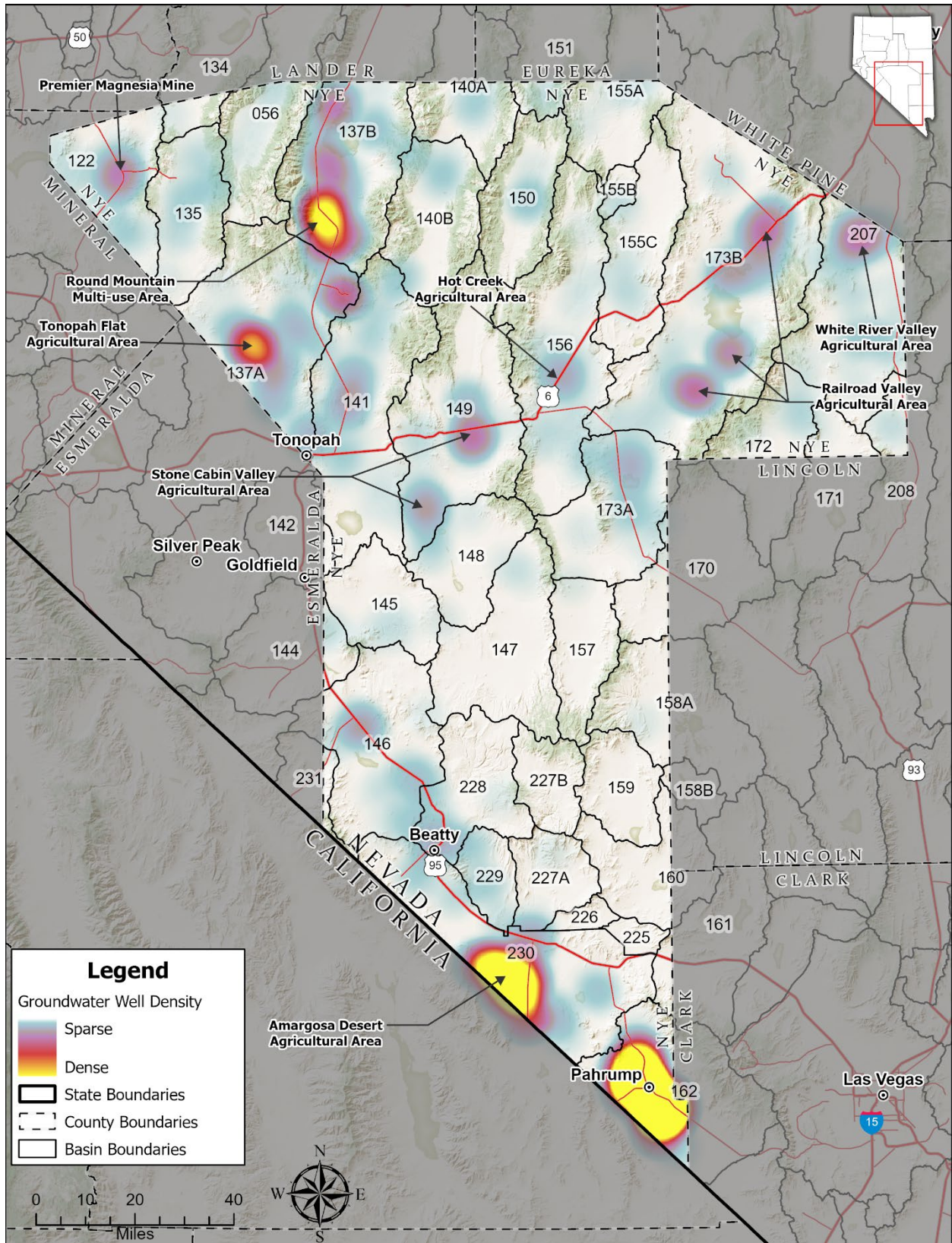


Figure 15. Groundwater wells in Nye County.

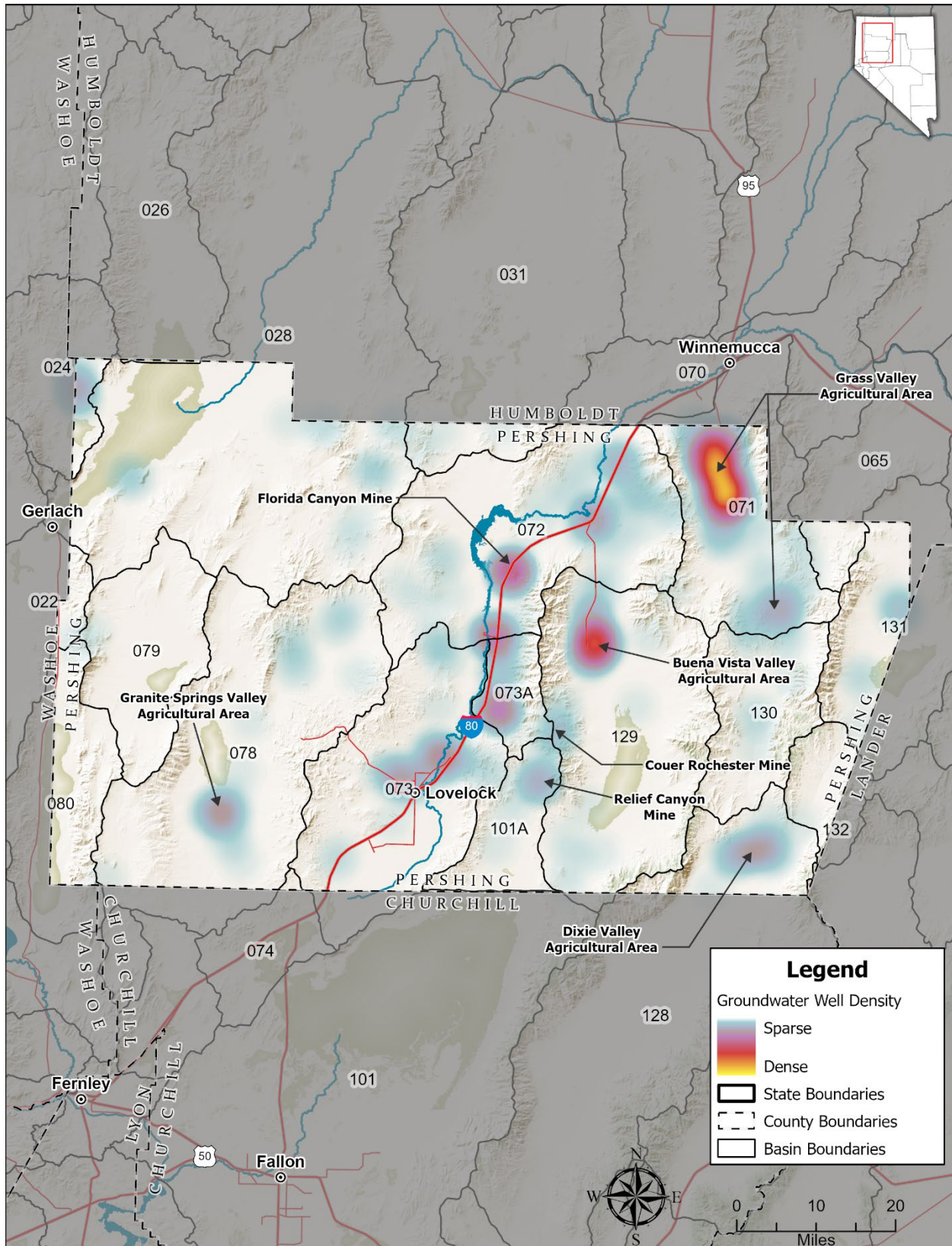


Figure 16. Groundwater wells in Pershing County.

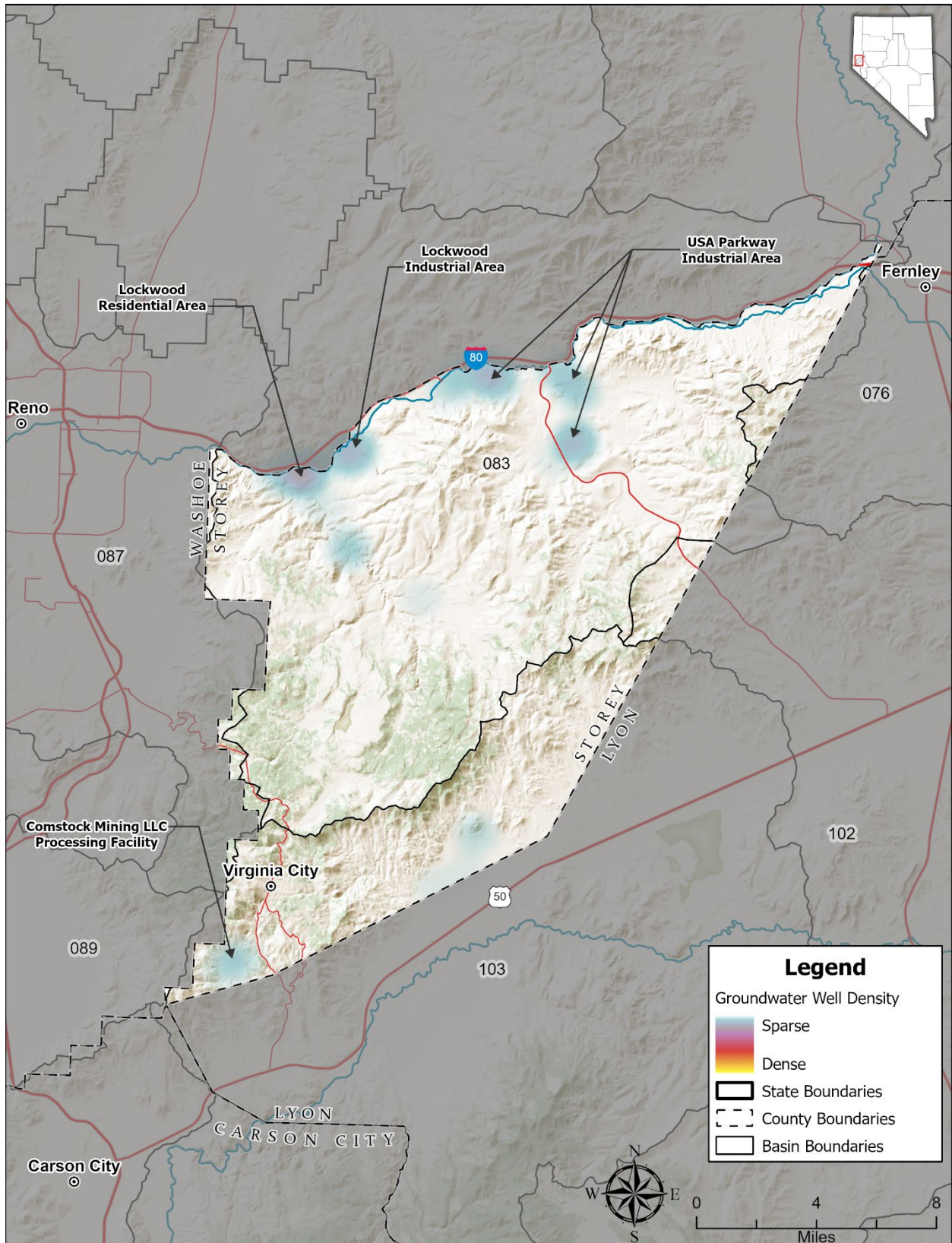


Figure 17. Groundwater wells in Storey County.

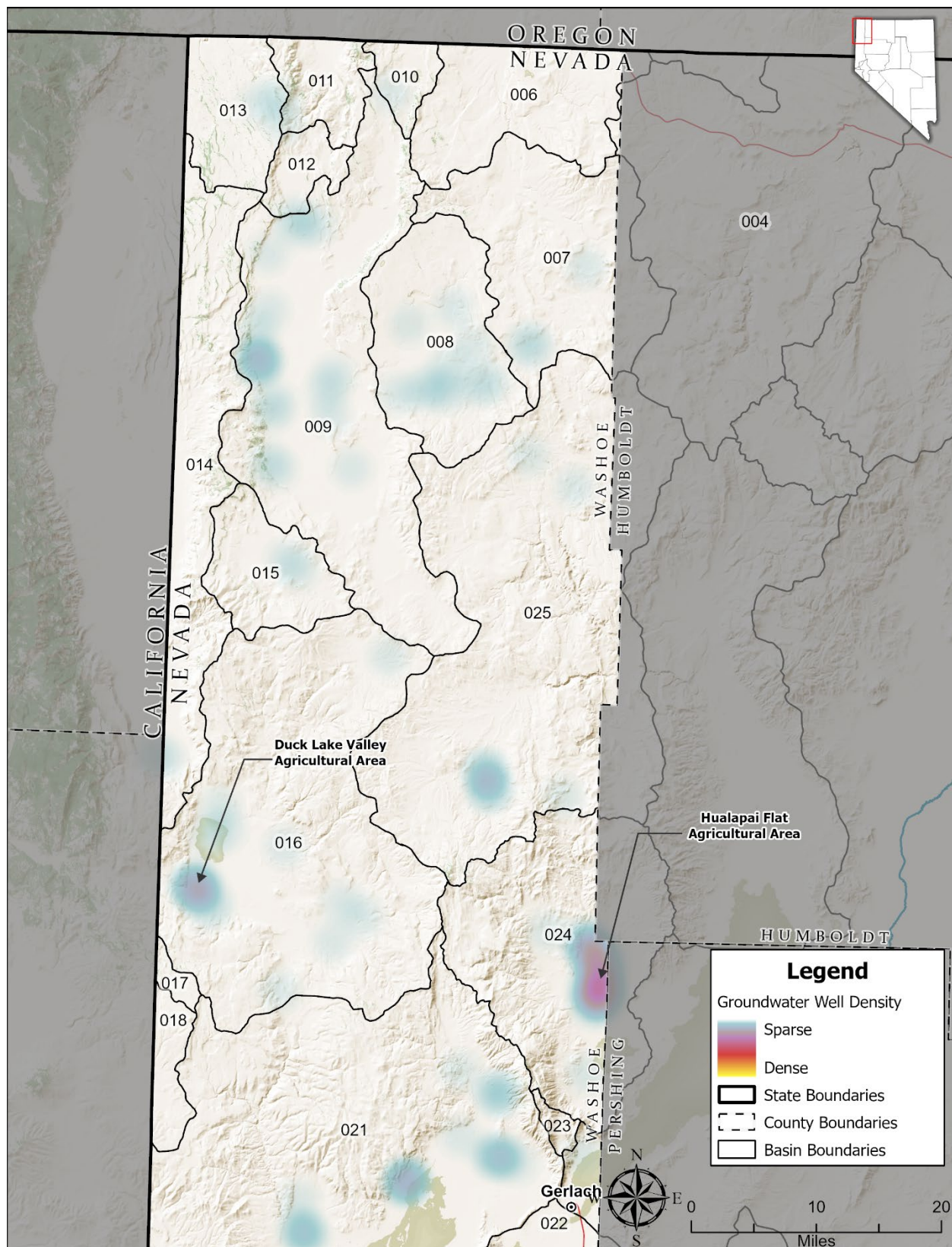


Figure 18. Groundwater wells in northern Washoe County.

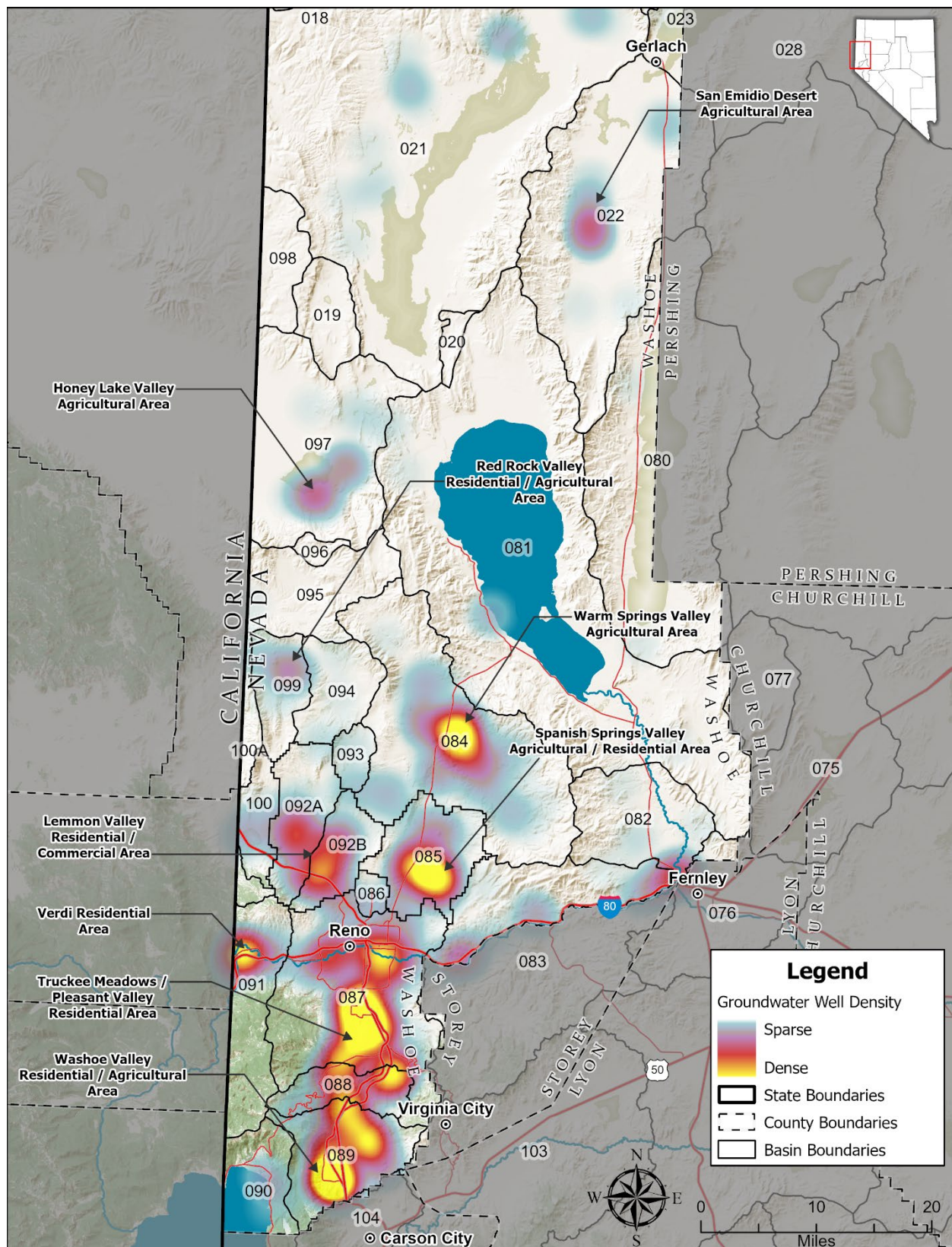


Figure 19. Groundwater wells in southern Washoe County.

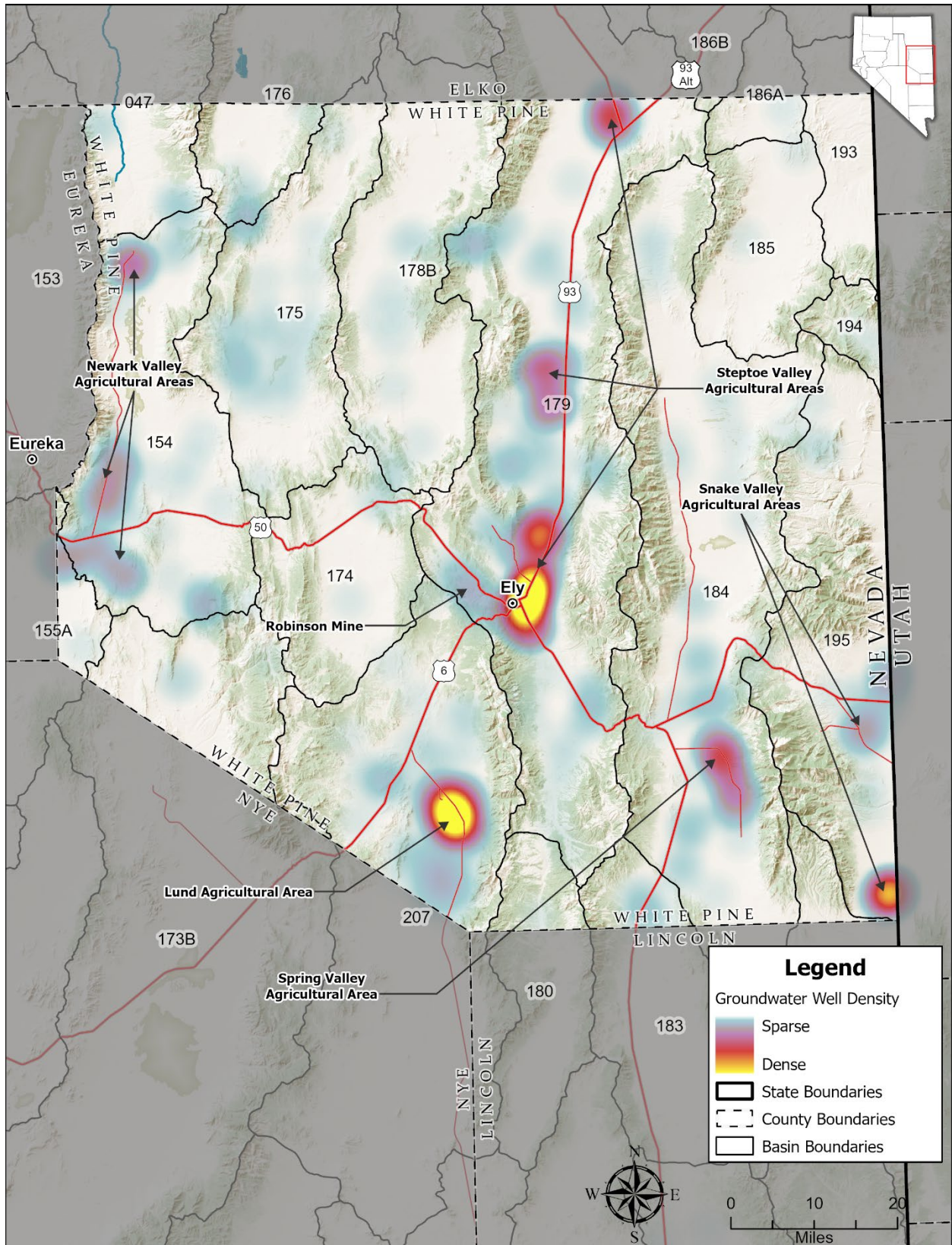


Figure 20. Groundwater wells in White Pine County.

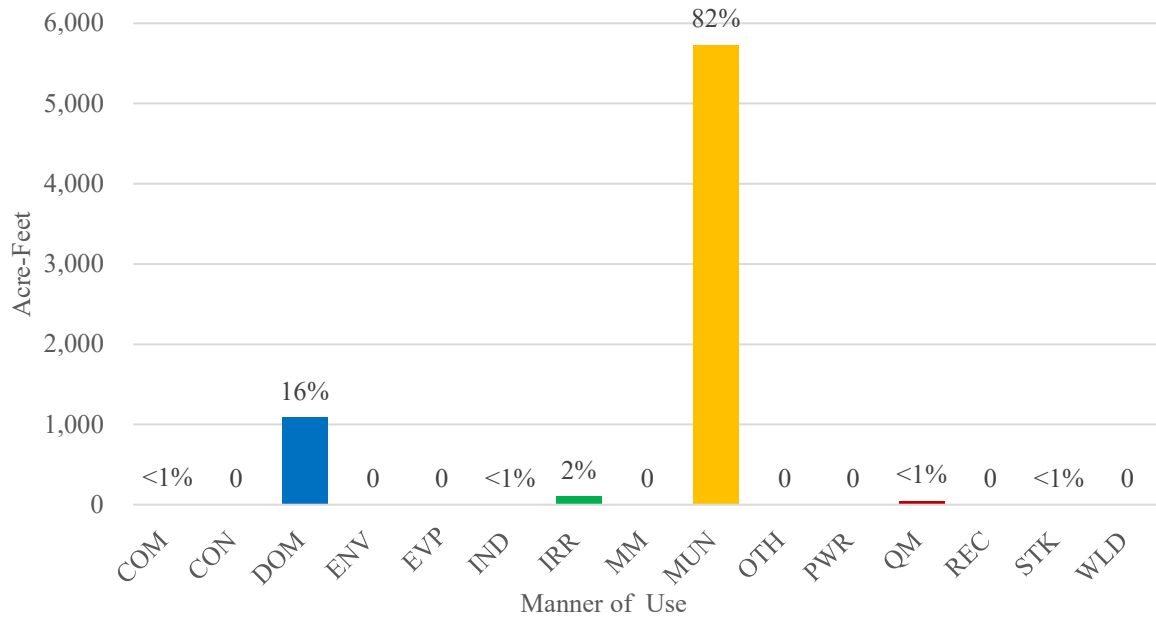


Figure 21. Carson City pumpage by manner of use.

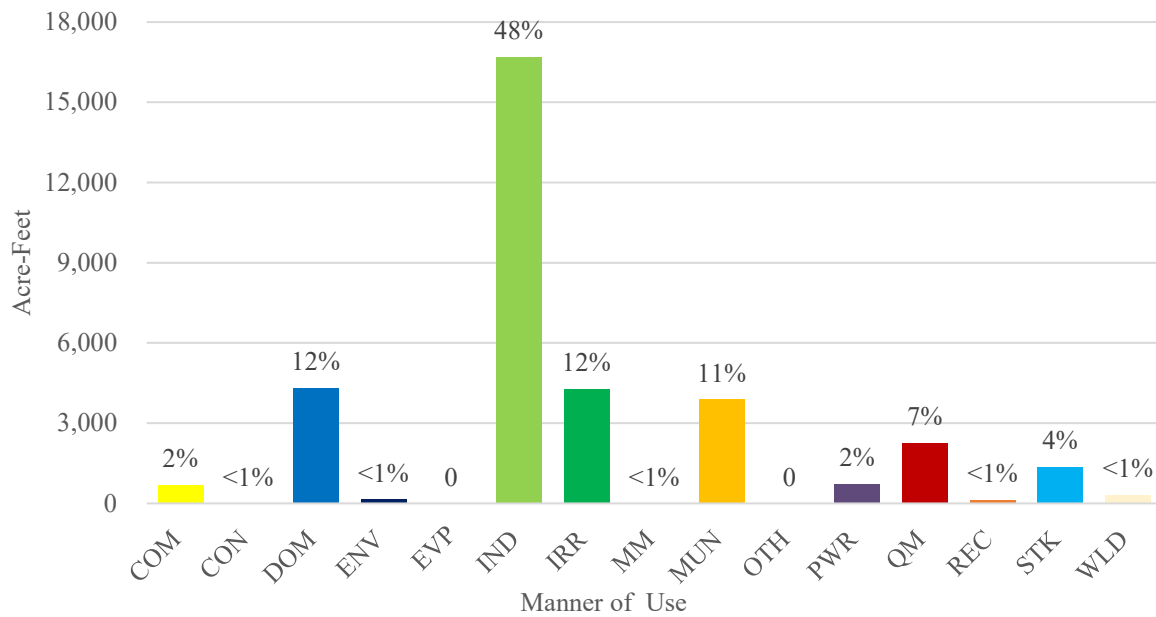


Figure 22. Churchill County pumpage by manner of use.

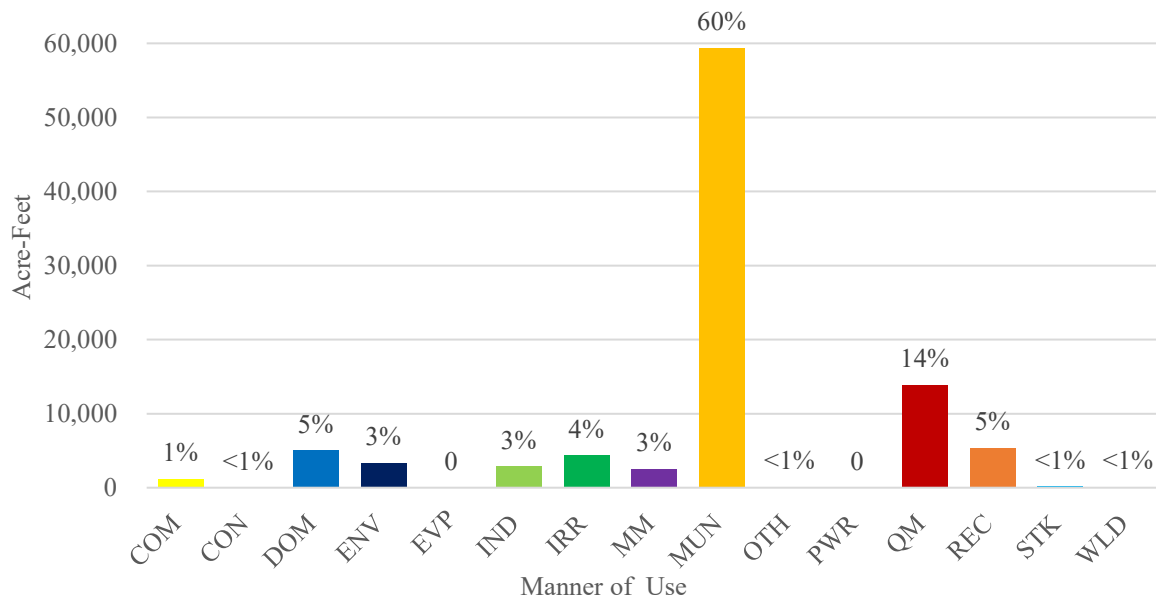


Figure 23. Clark County pumpage by manner of use.

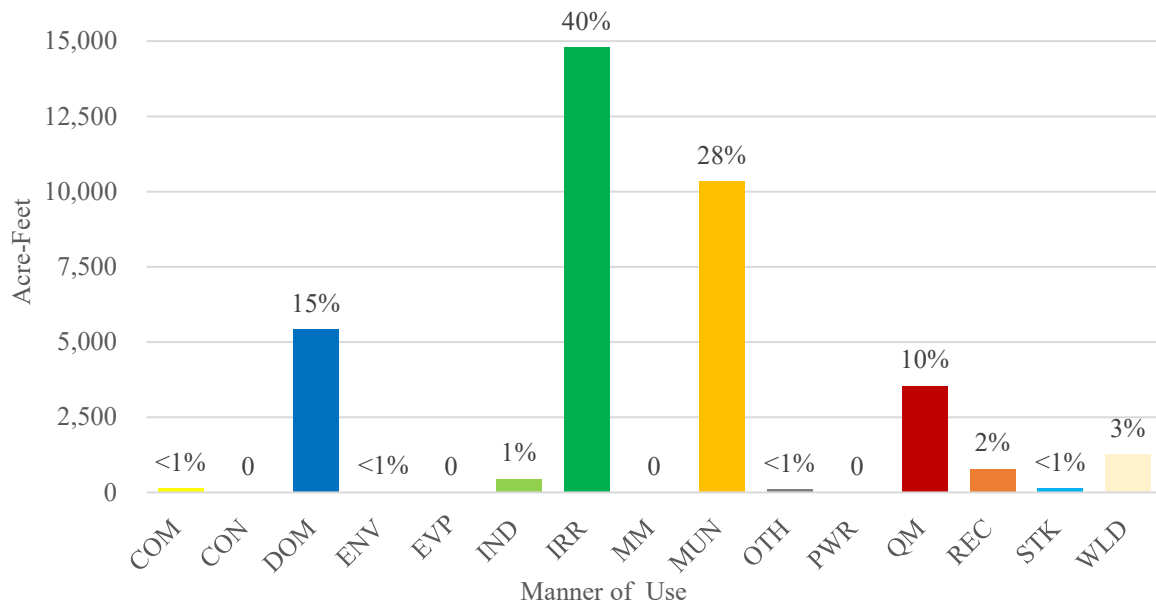


Figure 24. Douglas County pumpage by manner of use.

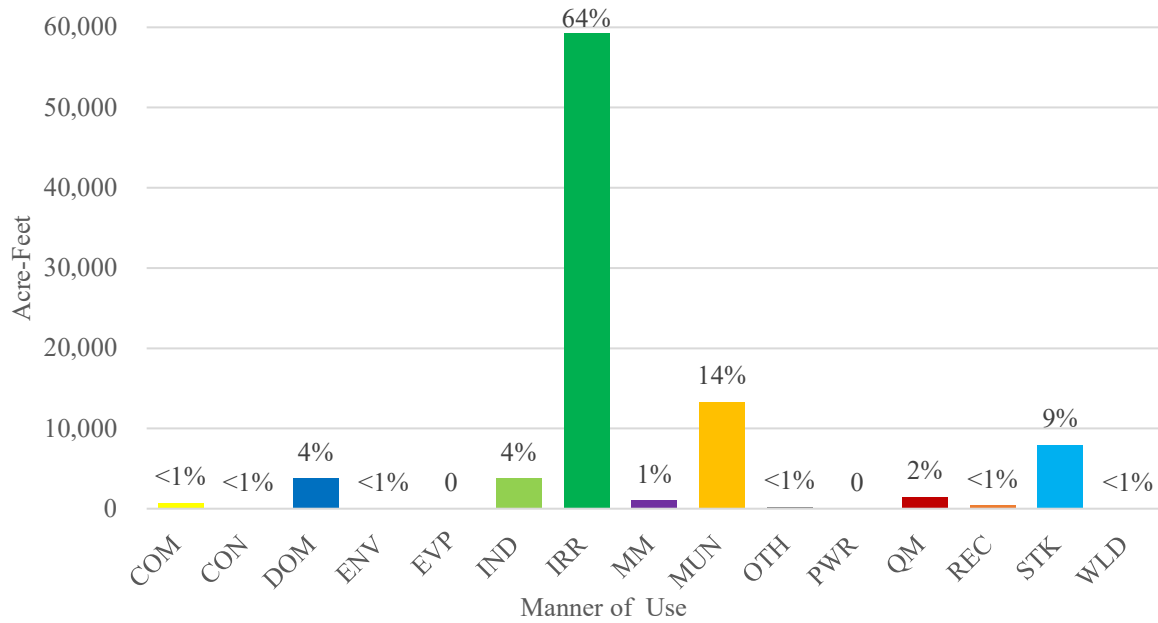


Figure 25. Elko County pumpage by manner of use.

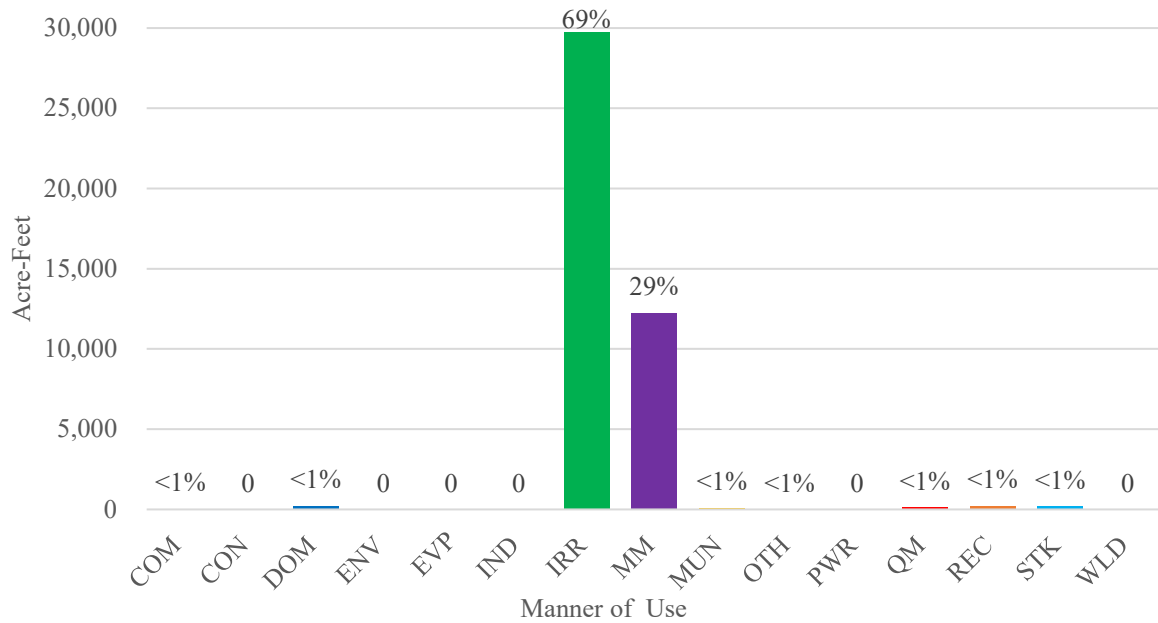


Figure 26. Esmeralda County pumpage by manner of use.

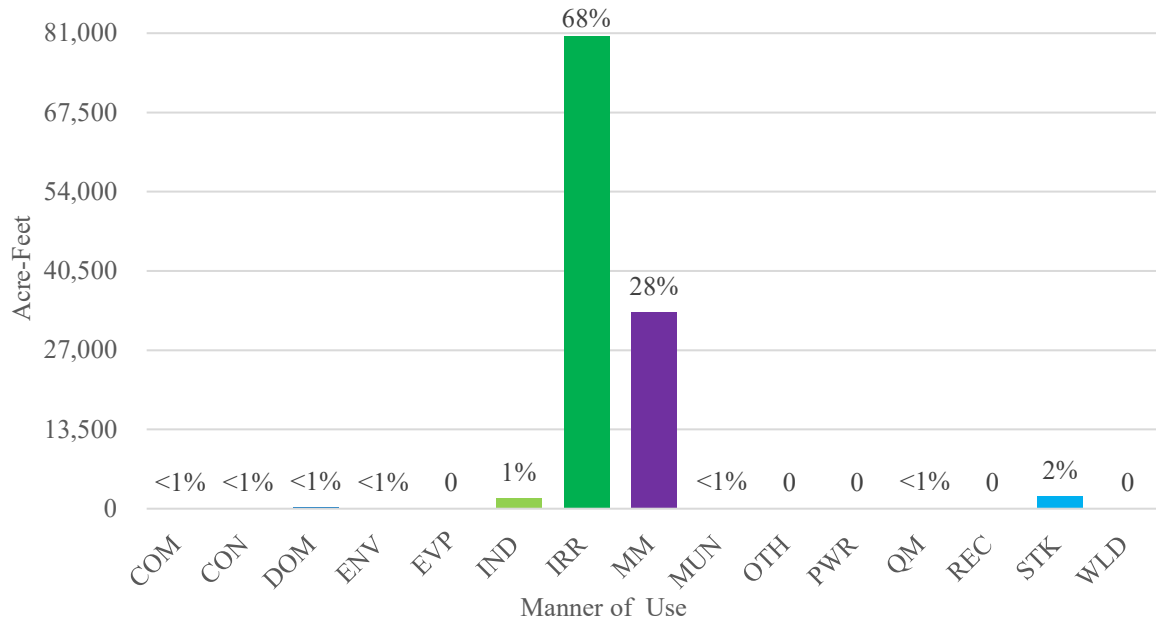


Figure 27. Eureka County pumpage by manner of use.

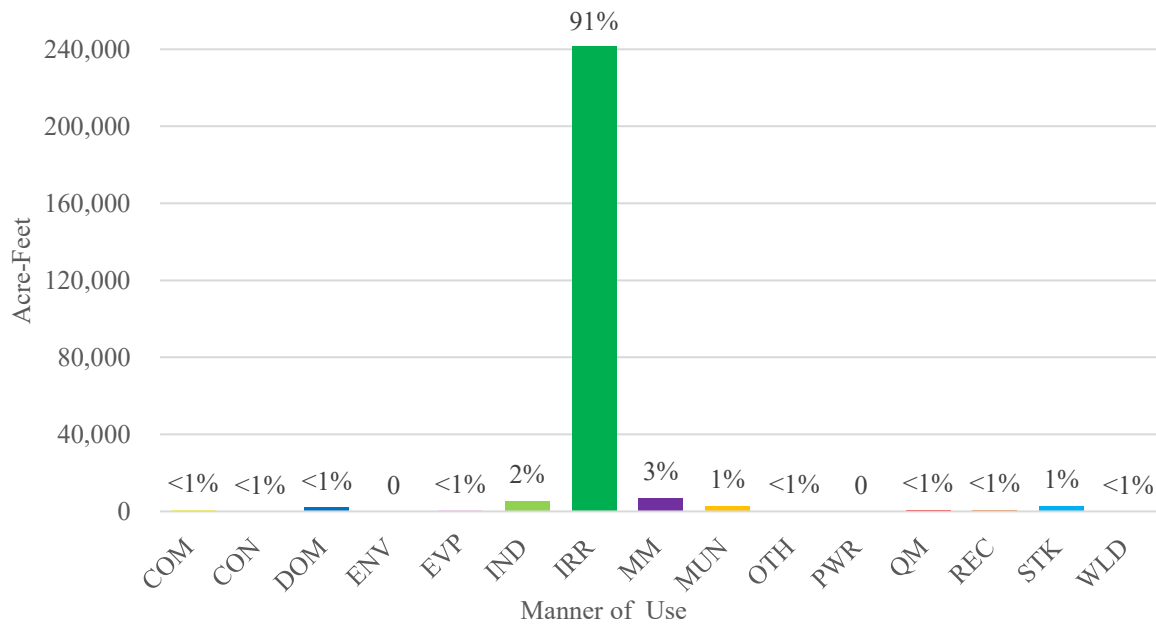


Figure 28. Humboldt County pumpage by manner of use.

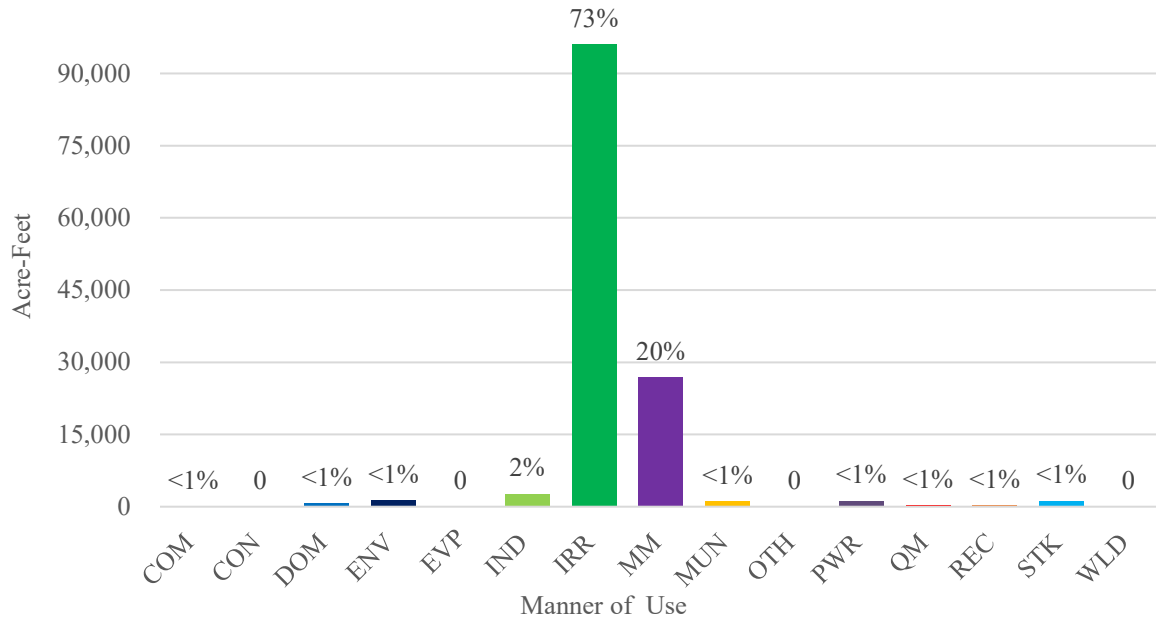


Figure 29. Lander County pumpage by manner of use.

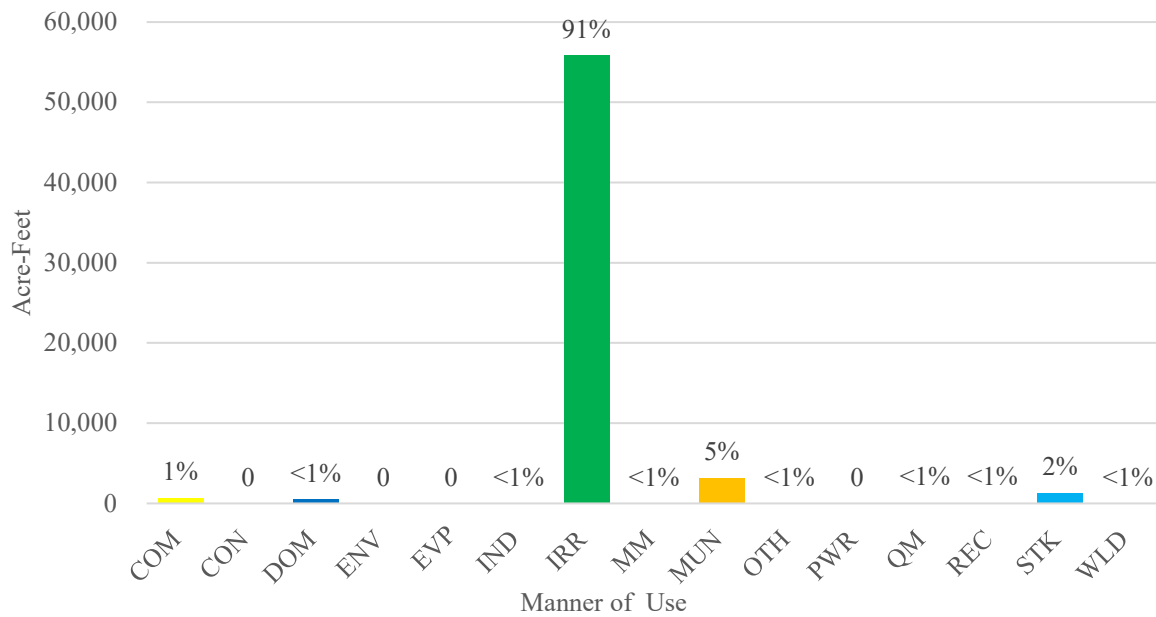


Figure 30. Lincoln County pumpage by manner of use.

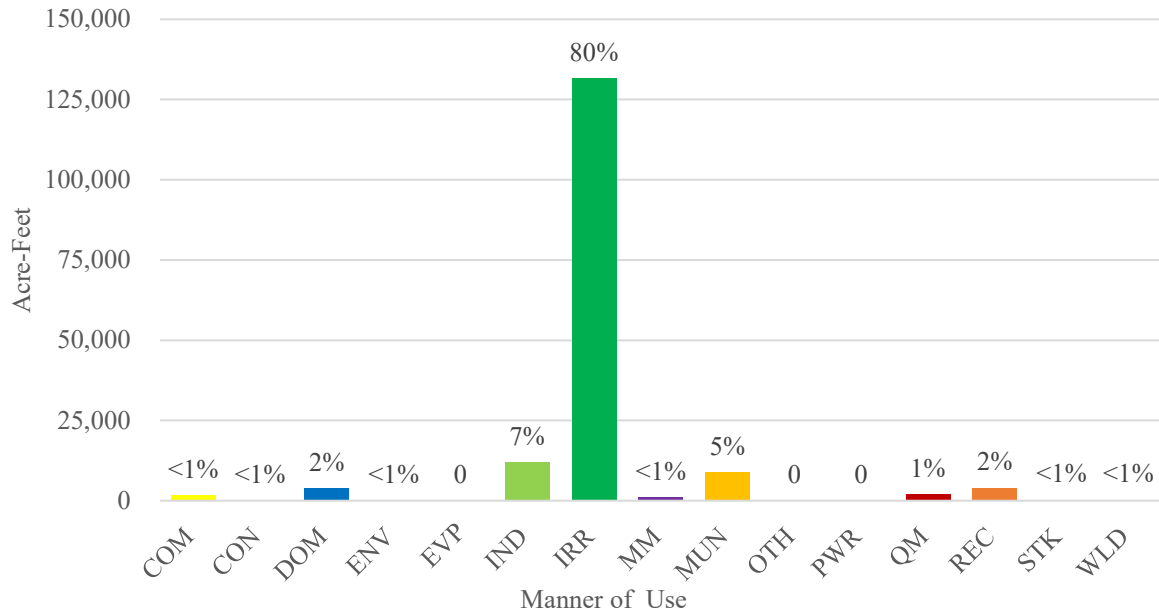


Figure 31. Lyon County pumpage by manner of use.

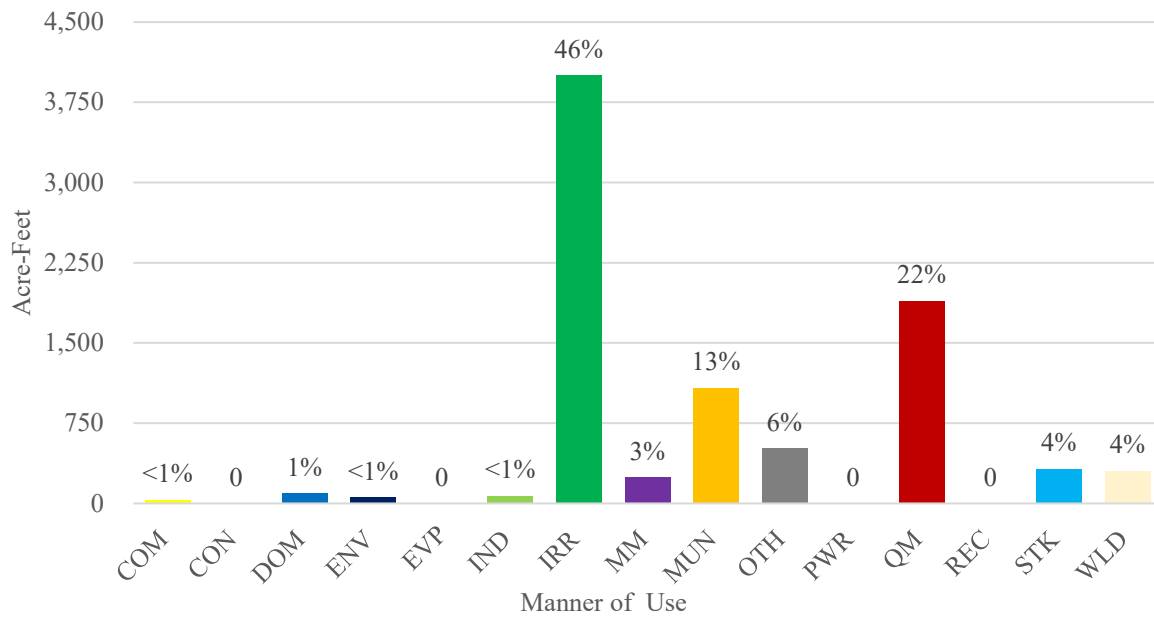


Figure 32. Mineral County pumpage by manner of use.

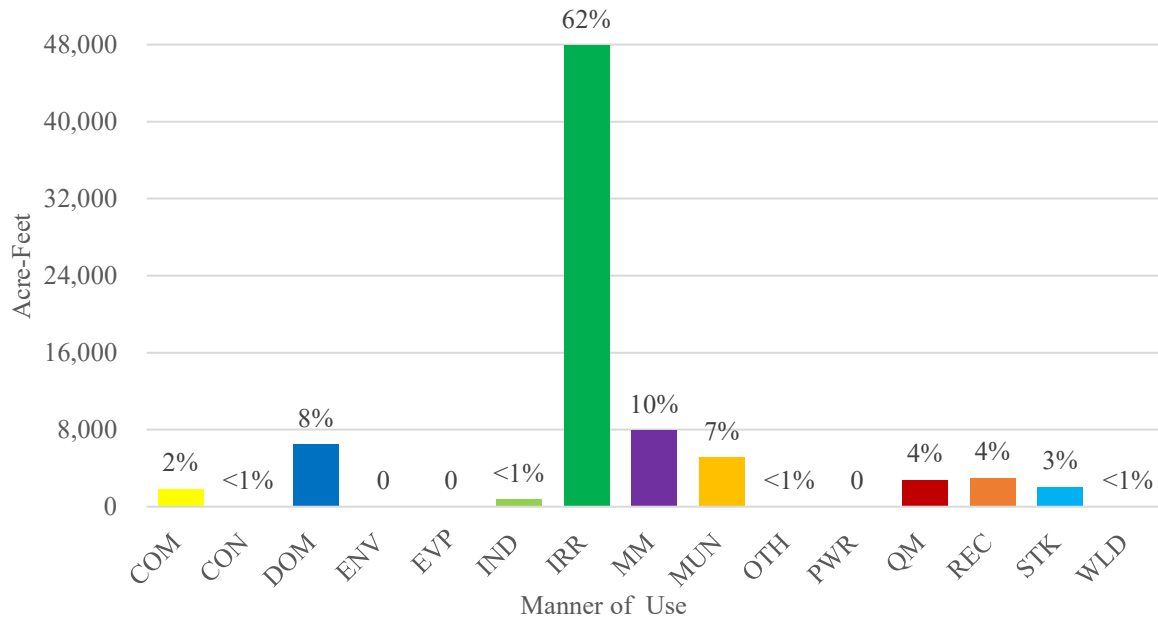


Figure 33. Nye County pumpage by manner of use.

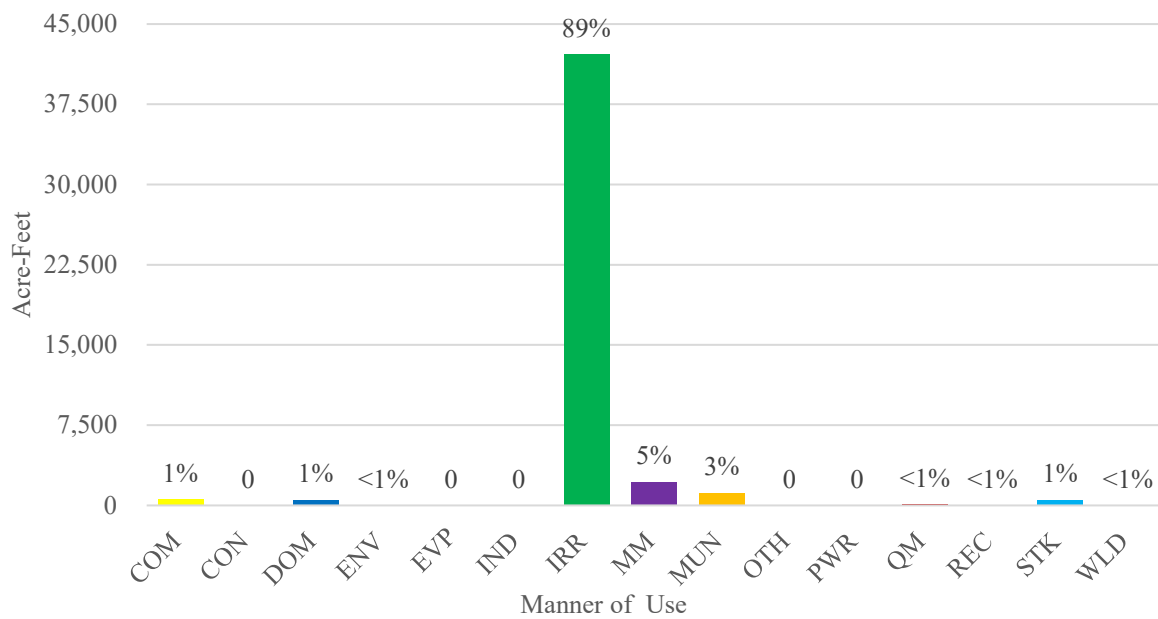


Figure 34. Pershing County pumpage by manner of use.

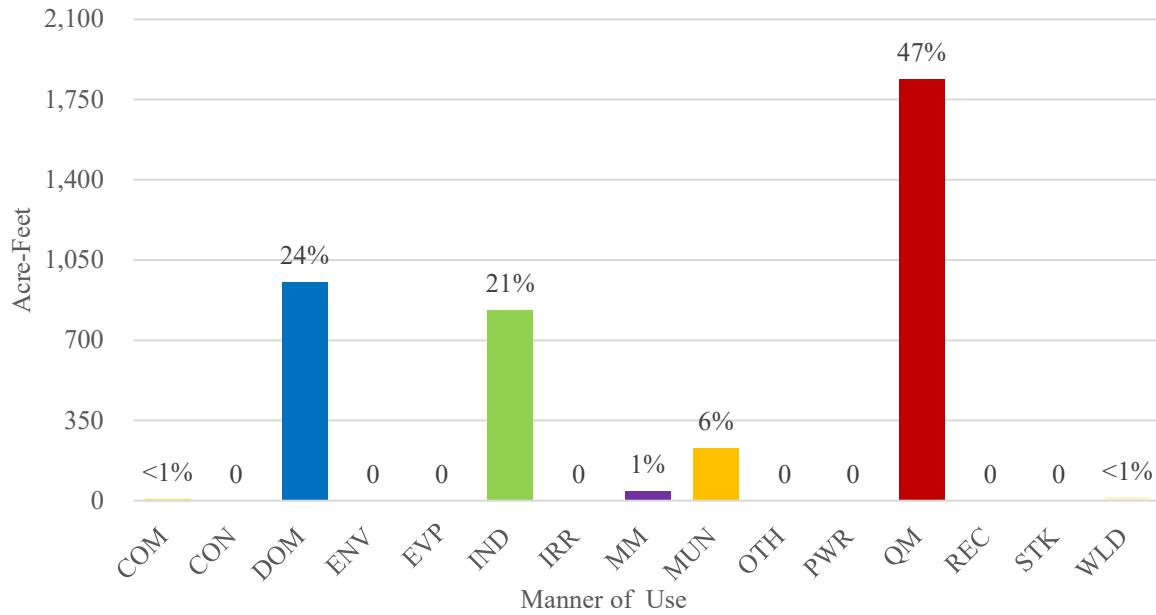


Figure 35. Storey County pumpage by manner of use.

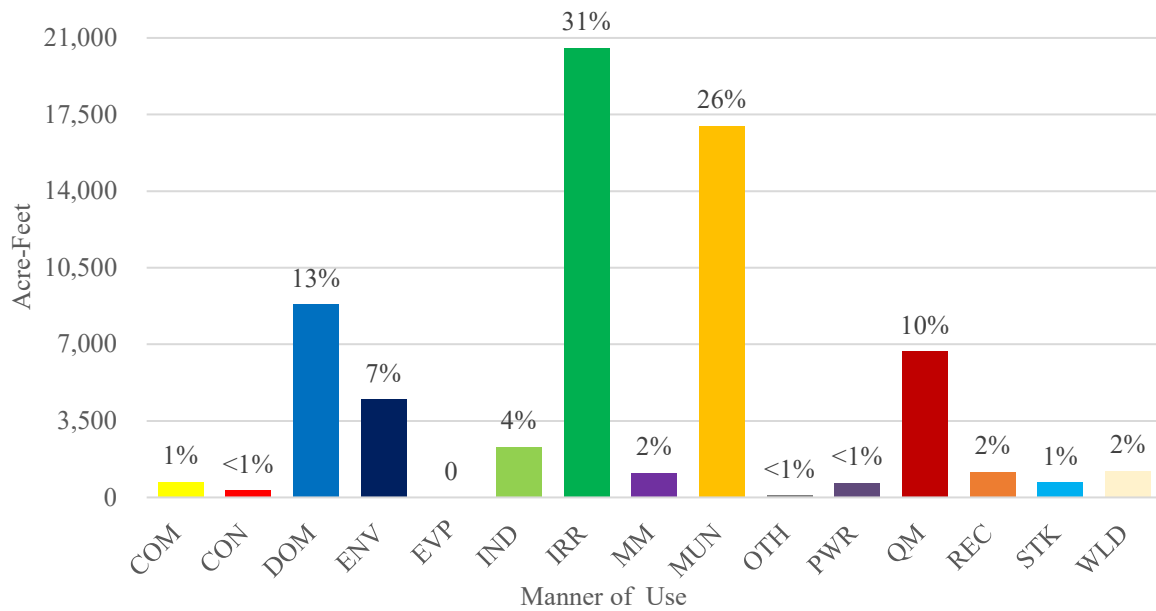


Figure 36. Washoe County pumpage by manner of use.

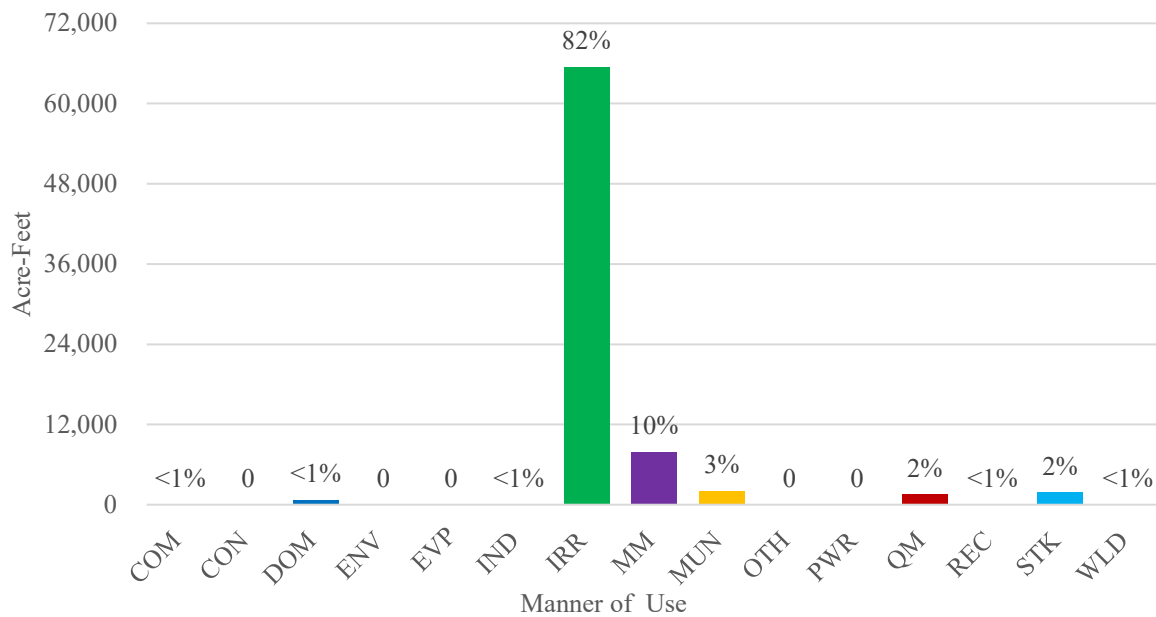


Figure 37. White Pine County pumpage by manner of use.

APPENDIX A. GROUNDWATER PUMPAGE BY BASIN AND MANNER OF USE.

Explanation of Column Headings for Groundwater Pumpage by Basin and Manner of Use

Basin Number	Assigned administrative groundwater basin number
Sub	Identifier for a basin subarea
Basin Name	Assigned administrative groundwater basin name
County	Name of county in which the groundwater basin is located
Inventory Type	Inventory type, if 2017 crop (C) or pumpage (P) inventory was conducted; blank if no inventory was conducted

Manner of Use

COM	Commercial
CON	Construction
DOM	Domestic
ENV	Environmental
EVP	Evaporation
IND	Industrial
IRR	Irrigation
MM	Mining and Milling
MUN	Municipal
OTH	Other
PWR	Power
QM	Quasi-Municipal
REC	Recreation
STK	Stock
WLD	Wildlife

Basin Number	Sub	Basin Name	County	Inventory Type	COM	CON	DOM	ENV	EVP	IND	IRR	MM	MUN	OTH	PWR	QM	REC	STK	WLD	Total
001		Pueblo Valley	Humboldt	C	5	0	23	0	0	0	3,990	0	0	0	0	4	0	13	0	4,036
002		Continental Lake Valley	Humboldt		0	0	2	0	0	0	712	0	0	0	0	0	0	30	0	745
003		Gridley Lake Valley	Humboldt		0	0	0	0	0	0	863	0	0	0	0	0	0	52	0	914
004		Virgin Valley	Humboldt		0	0	10	0	0	0	0	0	0	0	0	7	0	0	0	17
005		Sage Hen Valley	Humboldt		0	0	0	0	0	0	0	0	0	0	0	0	0	0	0	0
006		Guano Valley	Humboldt		0	0	0	0	0	0	0	0	0	0	0	0	0	0	0	0
006		Guano Valley	Washoe		0	0	0	0	0	0	0	0	0	0	0	0	0	0	0	0
007		Swan Lake Valley	Humboldt		0	0	0	0	0	0	0	0	0	0	0	0	0	0	0	0
007		Swan Lake Valley	Washoe		0	0	1	0	0	0	0	0	0	0	0	0	0	27	0	28
008		Massacre Lake Valley	Washoe		0	0	0	0	0	0	0	0	0	0	0	0	0	63	0	63
009		Long Valley	Washoe		0	0	6	0	0	0	137	0	0	0	0	0	0	78	0	221
010		Macy Flat	Washoe		0	0	0	0	0	0	0	0	0	0	0	0	0	2	0	2
011		Coleman Valley	Washoe		0	0	0	0	0	0	0	0	0	0	0	0	0	7	0	7
012		Mosquito Valley	Washoe		0	0	0	0	0	0	0	0	0	0	0	0	0	0	0	0
013		Warner Valley	Washoe		0	0	0	0	0	0	0	0	0	0	0	0	0	14	0	14
014		Surprise Valley	Washoe		0	0	0	0	0	0	233	0	0	0	0	0	0	20	0	253
015		Boulder Valley	Washoe		0	0	0	0	0	0	0	0	0	0	0	0	0	22	0	22
016		Duck Lake Valley	Washoe		0	0	2	0	0	0	0	0	0	0	0	0	0	125	0	127
017		Pilgrim Flat	Washoe		0	0	0	0	0	0	0	0	0	0	0	0	0	0	0	0
018		Painter Flat	Washoe		0	0	0	0	0	0	0	0	0	0	0	0	0	0	0	0
019		Dry Valley	Washoe		0	0	0	0	0	0	0	0	0	0	0	0	0	0	0	0
020		Sano Valley	Washoe		0	0	0	0	0	0	0	0	0	0	0	0	0	0	0	0
021		Smoke Creek Valley	Washoe		8	0	11	0	0	0	1,550	0	0	0	0	0	0	52	449	2,071
022		San Emidio Desert	Washoe		0	0	7	0	0	1,304	2,686	1,108	0	0	652	86	0	25	0	5,869
023		Granite Basin	Washoe		0	0	0	0	0	0	0	0	0	0	0	0	0	0	0	0
024		Hualapai Flat	Washoe	C	9	0	5	0	0	0	10,444	0	0	0	0	4	0	65	0	10,528
025		High Rock Lake Valley	Humboldt		0	0	0	0	0	0	0	0	0	0	0	0	0	19	0	19
025		High Rock Lake Valley	Washoe		0	0	2	0	0	0	0	0	0	0	0	0	0	36	0	38
026		Mud Meadow	Humboldt		0	0	0	0	0	0	27	0	0	0	0	0	0	0	0	27
027		Summit Lake Valley	Humboldt		0	0	1	0	0	0	140	0	0	0	0	0	0	12	0	153
028		Black Rock Desert	Humboldt		0	0	9	0	0	0	3,859	113	0	0	0	8	0	60	0	4,050
028		Black Rock Desert	Pershing		0	0	3	0	0	0	36	15	0	0	0	0	0	22	0	76
028		Black Rock Desert	Washoe		0	0	1	0	0	0	0	0	0	0	0	0	0	0	0	1
029		Pine Forest Valley	Humboldt	C	4	0	18	0	0	0	24,849	0	0	6	0	0	0	149	0	25,026
030	A	Kings River Valley - Rio King Subarea	Humboldt	C	112	0	25	0	0	0	44,096	0	0	94	0	1	0	146	0	44,474
030	B	Kings River Valley - Sod House Subarea	Humboldt		0	0	1	0	0	0	82	0	0	0	0	0	0	124	0	207
031		Desert Valley	Humboldt	C	2	20	16	0	0	2,309	24,624	98	0	65	0	0	772	109	0	28,016
031		Desert Valley	Pershing	C	0	0	0	0	0	0	0	0	0	0	0	0	0	43	0	43
032		Silver State Valley	Humboldt	C	0	0	18	0	0	0	18,693	0	0	0	0	2	0	69	0	18,782
033	A	Quinn River Valley - Orovada Subarea	Humboldt	C	80	0	59	0	0	0	19,532	0	307	0	0	0	0	233	0	20,211
033	B	Quinn River Valley - McDermitt Subarea	Humboldt	C	0	0	41	0	0	0	2,412	0	0	0	0	47	0	798	0	3,298
034		Little Owyhee River Area	Elko		0	0	1	0	0	0	0	0	0	0	0	0	0	28	0	29
034		Little Owyhee River Area	Humboldt		0	0	2	0	0	0	0	0	0	0	0	0	0	0	0	2
035		South Fork Owyhee River	Elko		0	0	4	0	0	0	0	0	0	0	0	7	0	415	0	426
036		Independence Valley	Elko		0	0	20	0	0	3,620	2,688	14	18	0	0	2	0	93	0	6,454
037		Owyhee River Area	Elko		0	0	118	0	0	0	0	1	0	113	0	20	4	14	0	269
038		Bruneau River Area	Elko		0	0	2	0	0	0	0	0	0	0	0	0	0	16	0	18
039		Jarbridge River Area	Elko		0	0	1	0	0	0	0	0	0	0	0	0	0	0	0	1
040		Salmon Falls Creek Area	Elko		549	0	22	0	0	0	2,148	0	239	40	0	692	296	286	0	4,273
041		Goose Creek Area	Elko		0	0	1	0	0	0	627	0	0	0	0	0	0	269	0	897

Basin Number	Sub	Basin Name	County	Inventory Type	COM	CON	DOM	ENV	EVP	IND	IRR	MM	MUN	OTH	PWR	QM	REC	STK	WLD	Total
042		Marys River Area	Elko	P	22	0	176	0	0	0	5,319	7	546	49	0	30	0	1,038	9	7,195
043		Starr Valley	Elko	P	0	0	62	0	0	0	999	0	0	0	0	0	0	277	0	1,338
044		North Fork Area	Elko	P	3	0	479	0	0	71	3,073	822	0	0	0	22	0	457	0	4,927
045		Lamoille Valley	Elko	P	11	0	380	0	0	0	1,589	0	0	0	0	121	0	266	0	2,367
046		South Fork Area	Elko	P	0	0	50	0	0	0	0	0	0	0	0	3	0	53	0	105
047		Huntington Valley	Elko	P	29	0	57	0	0	0	1,196	0	0	0	0	0	0	170	0	1,452
047		Huntington Valley	White Pine	P	0	0	0	0	0	0	0	54	0	0	0	0	0	6	0	60
048		Dixie Creek - Ten Mile Creek Area	Elko	P	15	3	597	0	0	0	441	152	2,766	12	0	7	101	268	0	4,363
049		Elko Segment	Elko	P	20	0	1,326	8	0	17	294	0	7,921	1	0	304	0	174	0	10,066
049		Elko Segment	Eureka	P	0	0	0	0	0	0	0	0	0	0	0	0	0	11	0	11
050		Susie Creek Area	Elko	P	0	0	21	0	0	2	158	0	0	0	0	16	0	190	0	387
051		Maggie Creek Area	Elko	P	0	0	12	0	0	0	1,798	0	0	0	0	0	0	119	0	1,930
051		Maggie Creek Area	Eureka	P	0	18	1	0	0	0	0	17,542	0	0	0	0	0	74	0	17,635
052		Marys Creek Area	Elko	P	0	0	15	0	0	0	34	0	75	0	0	0	0	13	0	137
052		Marys Creek Area	Eureka	P	0	0	4	0	0	0	0	0	0	0	0	0	0	0	0	4
053		Pine Valley	Elko	P	0	0	2	0	0	0	7,027	0	0	0	0	60	0	49	0	7,138
053		Pine Valley	Eureka	P	0	0	21	0	0	0	0	103	0	0	0	0	0	316	0	440
054		Crescent Valley	Eureka	P	0	0	83	0	0	0	0	0	1	0	0	16	0	171	0	271
054		Crescent Valley	Lander	P	0	0	19	378	0	183	9,328	21,889	0	0	0	75	0	11	0	31,883
055		Carico Lake Valley	Lander	P	0	0	4	0	0	0	1,823	133	0	0	0	0	0	114	0	2,074
056		Upper Reese River Valley	Lander	P	0	0	22	0	0	0	10,545	0	24	0	0	74	0	138	0	10,803
056		Upper Reese River Valley	Nye	P	0	0	42	0	0	0	164	0	0	0	0	0	0	16	0	222
057		Antelope Valley	Lander	P	0	0	8	0	0	0	19,809	0	0	0	0	5	0	45	0	19,867
058		Middle Reese River Valley	Lander	P	0	0	13	0	0	0	25,317	0	0	0	0	0	0	76	0	25,406
059		Lower Reese River Valley	Eureka	P	1	0	1	0	0	1	0	0	0	0	0	5	0	0	0	8
059		Lower Reese River Valley	Lander	P	0	0	354	0	0	0	11,548	1,281	931	0	0	5	0	93	0	14,212
060		Whirlwind Valley	Eureka	P	0	0	2	0	0	0	0	0	0	0	0	0	0	16	0	18
060		Whirlwind Valley	Lander	P	0	0	0	0	0	105	0	0	0	0	1,187	0	0	7	0	1,299
061		Boulder Flat	Elko	P	0	0	0	0	0	0	0	0	0	0	0	0	0	9	0	9
061		Boulder Flat	Eureka	P	11	37	10	0	0	1,735	17,191	15,174	0	0	0	10	0	396	0	34,563
061		Boulder Flat	Lander	P	0	0	5	0	0	8	535	0	0	0	0	0	0	175	0	723
062		Rock Creek Valley	Elko	P	0	0	1	0	0	0	0	0	0	0	0	0	0	0	0	1
062		Rock Creek Valley	Eureka	P	0	0	0	0	0	0	0	0	0	0	0	0	0	13	0	13
062		Rock Creek Valley	Lander	P	0	0	1	0	0	0	0	0	0	0	0	0	0	10	0	11
063		Willow Creek Valley	Elko	P	0	5	4	6	0	0	2,567	6	0	0	0	45	0	23	0	2,657
064		Clovers Area	Elko	P	0	0	1	0	0	0	0	0	0	0	0	0	0	11	0	12
064		Clovers Area	Humboldt	P	0	0	19	0	488	1,266	27	281	0	0	0	20	0	131	0	2,232
064		Clovers Area	Lander	P	0	0	157	89	0	2,364	6,954	266	93	0	0	0	273	108	0	10,304
065		Pumpnickel Valley	Humboldt	P	0	0	4	0	0	0	1,197	151	0	0	0	0	0	113	0	1,466
065		Pumpnickel Valley	Pershing	P	0	0	0	0	0	0	0	0	0	0	0	0	0	0	0	0
066		Kelley Creek Area	Humboldt	P	0	0	9	0	0	2	5,497	6,528	0	0	0	0	0	44	0	12,080
067		Little Humboldt Valley	Elko	P	0	0	1	0	0	0	0	0	0	0	0	0	0	22	0	23
067		Little Humboldt Valley	Humboldt	P	0	0	1	0	0	0	6,805	0	0	0	0	0	0	91	0	6,897
068		Hardscrabble Area	Humboldt	P	0	0	0	0	0	0	0	0	0	0	0	0	0	0	0	0
069		Paradise Valley	Humboldt	P	43	0	448	0	0	4	61,371	0	0	6	0	14	3	542	0	62,430
070		Winnemucca Segment	Humboldt	P	286	4	756	0	0	1,319	16,796	0	555	1	0	541	31	74	76	20,439
071		Grass Valley	Humboldt	P	117	0	598	0	0	463	6,227	0	2,035	2	0	9	0	21	0	9,471
071		Grass Valley	Pershing	P	0	0	248	0	0	0	14,183	0	0	0	0	24	0	54	0	14,509
072		Inlay Area	Pershing	P	513	0	95	14	0	0	946	666	0	0	0	1	0	71	0	2,307
073		Lovelock Valley	Churchill	P	0	0	1	0	0	0	0	0	0	0	0	0	0	0	0	1

Basin Number	Sub	Basin Name	County	Inventory Type	COM	CON	DOM	ENV	EVP	IND	IRR	MM	MUN	OTH	PWR	QM	REC	STK	WLD	Total
073		Lovelock Valley	Pershing	P	44	0	60	0	0	0	2,090	79	55	0	0	0	2	80	0	2,411
073	A	Lovelock Valley - Oreana Subarea	Pershing	P	8	0	80	0	0	0	282	0	1,142	0	0	66	1	3	0	1,581
074		White Plains	Churchill	P	0	0	4	0	0	0	0	0	0	0	0	8	0	0	0	12
075		Brady Hot Springs	Churchill		0	0	2	0	0	4,400	0	8	0	0	737	0	0	13	0	5,160
075		Brady Hot Springs	Lyon		0	0	1	0	0	0	0	0	0	0	0	0	0	0	0	1
076		Fernley Area	Churchill		0	0	11	0	0	0	0	0	0	0	0	0	0	0	0	11
076		Fernley Area	Lyon		26	0	494	0	0	1,210	191	13	4,586	0	0	0	0	9	0	6,528
076		Fernley Area	Washoe		0	0	13	0	0	0	0	0	0	0	0	0	0	0	0	13
077		Fireball Valley	Churchill		0	0	0	0	0	0	0	0	0	0	0	0	0	0	0	0
078		Granite Springs Valley	Churchill		0	0	3	0	0	0	0	0	0	0	0	0	0	5	0	8
078		Granite Springs Valley	Pershing		0	0	2	0	0	0	3,485	0	0	0	0	0	0	59	7	3,553
079		Kumiva Valley	Pershing		0	0	0	0	0	0	0	0	0	0	0	0	0	1	0	1
080		Winnemucca Lake Valley	Pershing	P	0	0	0	0	0	0	0	2	0	0	0	0	0	0	0	2
080		Winnemucca Lake Valley	Washoe	P	0	0	3	0	0	0	12	0	0	0	0	0	0	0	0	15
081		Pyramid Lake Valley	Churchill	P	0	0	0	0	0	0	0	0	0	0	0	0	0	0	0	0
081		Pyramid Lake Valley	Washoe	P	14	0	56	0	0	0	1	0	0	0	0	8	0	16	0	96
082		Dodge Flat	Washoe	P	129	0	23	0	0	157	0	0	0	0	0	54	0	4	0	367
083		Tracy Segment	Lyon	P	0	0	15	0	0	0	0	0	0	0	0	0	0	0	0	15
083		Tracy Segment	Storey	P	7	0	666	0	0	832	0	6	230	0	0	1,838	0	0	0	3,579
083		Tracy Segment	Washoe	P	55	0	93	0	0	68	0	0	0	0	0	1,141	0	9	0	1,366
084		Warm Springs Area	Washoe	P	5	0	656	556	0	2,267	0	0	0	0	0	58	9	31	0	3,582
085		Spanish Springs Valley	Washoe		171	22	392	0	0	0	0	0	1,098	0	0	573	609	3	0	2,869
086		Sun Valley	Washoe		0	0	231	1	0	14	0	0	0	0	0	0	0	0	0	246
087		Truckee Meadows	Storey	P	0	0	40	0	0	0	0	0	0	0	0	0	0	0	0	40
087		Truckee Meadows	Washoe	P	191	0	1,681	3,867	0	789	220	0	8,198	0	0	1,653	158	0	2	16,758
088		Pleasant Valley	Washoe	P	12	0	740	0	0	0	144	0	586	73	0	804	32	1	0	2,391
089		Washoe Valley	Carson City	P	0	0	0	0	0	0	0	0	0	0	0	0	0	0	0	0
089		Washoe Valley	Storey	P	0	0	0	0	0	0	0	0	0	0	0	0	0	0	0	0
089		Washoe Valley	Washoe	P	21	0	1,594	0	0	0	2,067	0	392	2	0	65	320	15	773	5,250
090		Lake Tahoe Basin	Carson City	P	0	0	1	0	0	0	73	0	0	0	0	1	0	0	0	75
090		Lake Tahoe Basin	Douglas	P	40	0	24	16	0	0	465	0	2,557	0	0	502	465	4	0	4,073
090		Lake Tahoe Basin	Washoe	P	0	0	10	33	0	0	4	0	2,968	0	0	15	0	0	0	3,030
091		Truckee Canyon Segment	Washoe	P	34	0	480	0	0	0	55	0	238	5	0	453	3	4	0	1,272
092	A	Lemmon Valley - Western Part	Washoe	P	6	0	667	0	0	0	3	0	0	0	0	71	17	0	0	764
092	B	Lemmon Valley - Eastern Part	Washoe	P	43	0	1,226	0	0	1	2	0	11	0	0	115	29	0	0	1,427
093		Antelope Valley	Washoe		0	0	208	0	0	0	0	0	0	0	0	53	0	2	0	263
094		Bedell Flat	Washoe		9	0	77	0	0	0	0	0	0	0	0	0	0	22	0	108
095		Dry Valley	Washoe		0	0	10	0	0	0	9	0	0	0	0	0	0	0	0	19
096		Newcomb Lake Valley	Washoe		0	0	0	0	0	0	0	0	0	0	0	0	0	0	0	0
097		Honey Lake Valley	Washoe		0	300	35	0	0	0	443	0	3,391	0	0	21	0	29	0	4,219
098		Skodaddle Creek Valley	Washoe		0	0	0	0	0	0	0	0	0	0	0	0	0	0	0	0
099		Red Rock Valley	Washoe		5	0	413	0	0	0	250	0	113	10	0	0	0	3	0	794
100		Cold Springs Valley	Washoe		1	0	175	32	0	0	4	0	0	0	0	1,178	0	5	0	1,395
100	A	Cold Springs Valley - Long Valley	Washoe		0	0	6	0	0	0	0	0	0	0	0	317	0	0	0	323
101		Carson Desert	Churchill		675	1	4,241	151	0	4,546	2,720	0	3,897	0	0	2,047	131	861	64	19,334
101		Carson Desert	Lyon		0	0	3	0	0	0	0	0	0	0	0	0	0	0	0	3
101	A	Carson Desert	Pershing		0	0	5	0	0	0	0	818	0	0	0	0	0	23	0	846
102		Churchill Valley	Churchill	P	0	0	31	0	0	0	0	0	0	0	0	0	0	0	0	31
102		Churchill Valley	Douglas	P	0	0	2	0	0	0	0	0	0	0	0	0	0	0	0	2
102		Churchill Valley	Lyon	P	11	0	1,298	0	0	0	511	0	0	0	0	560	16	15	0	2,411

Basin Number	Sub	Basin Name	County	Inventory Type	COM	CON	DOM	ENV	EVP	IND	IRR	MM	MUN	OTH	PWR	QM	REC	STK	WLD	Total
102		Churchill Valley	Storey	P	0	0	0	0	0	0	0	0	0	0	0	0	0	0	0	0
103		Dayton Valley	Carson City	P	1	0	186	0	0	5	0	0	752	0	0	0	0	1	0	945
103		Dayton Valley	Douglas	P	0	0	2	0	0	0	0	0	0	0	0	0	0	0	0	2
103		Dayton Valley	Lyon	P	187	1	1,118	0	0	137	2,557	7	2,351	0	0	952	0	0	0	7,311
103		Dayton Valley	Storey	P	0	0	248	0	0	0	0	36	0	0	0	1	0	0	14	299
104		Eagle Valley	Carson City	P	12	0	775	0	0	1	32	0	4,543	0	0	47	0	1	0	5,411
104		Eagle Valley	Douglas	P	2	0	107	0	0	0	0	0	0	0	0	89	0	0	0	198
104		Eagle Valley	Washoe	P	0	0	4	0	0	0	0	0	0	0	0	0	0	0	0	4
105		Carson Valley	Carson City	P	0	0	123	0	0	0	0	0	434	0	0	0	0	0	0	557
105		Carson Valley	Douglas	P	43	0	4,047	1	0	441	11,948	0	7,779	101	0	2,693	312	120	1,260	28,746
106		Antelope Valley	Douglas	P	45	0	370	0	0	0	2,384	0	0	0	0	258	3	0	0	3,060
106		Antelope Valley	Lyon	P	0	0	1	0	0	0	0	0	0	0	0	0	0	0	0	1
107		Smith Valley	Douglas	P	0	0	871	0	0	0	0	0	0	0	0	0	0	13	0	884
107		Smith Valley	Lyon	P	631	0	0	0	0	16	34,085	0	0	0	0	85	7	54	0	34,878
108		Mason Valley	Lyon	P	728	10	803	0	0	10,480	89,802	1,047	1,854	0	0	367	3,984	49	283	109,407
109		East Walker Area	Lyon		0	0	28	0	0	0	4,461	0	0	0	0	0	0	41	0	4,529
109		East Walker Area	Mineral		0	0	3	0	0	0	0	72	0	0	0	0	0	22	0	97
110	A	Walker Lake Valley - Schurz Subarea	Churchill		0	0	0	0	0	0	0	0	0	0	0	0	0	0	0	0
110	A	Walker Lake Valley - Schurz Subarea	Lyon		0	0	0	0	0	0	0	0	0	0	0	0	0	16	0	16
110	A	Walker Lake Valley - Schurz Subarea	Mineral		0	0	52	0	0	0	12	0	0	0	0	3	0	4	0	71
110	B	Walker Lake Valley - Walker Subarea	Mineral		24	0	6	0	0	0	0	0	0	0	0	1,876	0	0	0	1,906
110	C	Walker Lake Valley - Whiskey Flat Subarea	Mineral		0	0	21	51	0	72	1,306	0	723	152	0	2	0	6	0	2,334
111	A	Alkali Valley - Northern Part	Mineral		0	0	0	0	0	0	0	0	0	0	0	0	0	0	0	0
111	B	Alkali Valley - Southern Part	Mineral		0	0	0	0	0	0	0	0	0	0	0	0	0	0	0	0
112		Mono Valley	Mineral		0	0	0	0	0	0	0	0	0	0	0	0	0	0	0	0
113		Huntoon Valley	Mineral		0	0	1	0	0	0	0	0	0	0	0	0	0	36	0	37
114		Teels Marsh Valley	Mineral		1	0	1	0	0	0	0	0	0	0	0	10	0	3	0	15
115		Adobe Valley	Mineral		0	0	0	0	0	0	0	0	0	0	0	0	0	0	0	0
116		Queen Valley	Mineral		0	0	1	0	0	0	0	0	0	0	0	0	0	0	0	1
116		Queen Valley	Esmeralda		0	0	0	0	0	0	0	0	0	0	0	0	0	0	0	0
117		Fish Lake Valley	Esmeralda	P	42	0	222	0	0	0	29,367	0	0	0	0	6	209	25	0	29,871
118		Columbus Salt Marsh Valley	Esmeralda		0	0	4	0	0	0	0	1	0	0	0	32	0	2	0	39
119		Rhodes Salt Marsh Valley	Mineral		0	0	0	0	0	0	0	0	0	0	0	0	0	0	300	300
120		Garfield Flat	Mineral		0	0	0	0	0	0	0	0	0	0	0	0	0	22	0	22
121	A	Soda Spring Valley - Eastern Part	Mineral		6	0	6	6	0	0	0	0	356	362	0	0	0	30	0	766
121	B	Soda Spring Valley - Western Part	Mineral		0	0	0	0	0	0	0	170	0	0	0	0	0	2	0	172
122		Gabbs Valley	Churchill		0	0	8	0	0	0	0	0	0	0	0	0	0	1	0	9
122		Gabbs Valley	Mineral		0	0	2	0	0	0	2,684	0	0	0	0	0	0	153	0	2,839
122		Gabbs Valley	Nye		0	0	2	0	0	0	0	2,192	3	0	0	13	0	126	0	2,335
123		Rawhide Flats	Churchill		0	0	1	0	0	0	0	0	0	0	0	0	0	116	0	117
124		Fairview Valley	Churchill		0	0	1	0	0	0	0	0	0	0	0	1	0	33	0	36
125		Stingaree Valley	Churchill		0	0	1	0	0	0	0	0	0	0	0	0	0	61	0	62
126		Cowkick Valley	Churchill		0	0	1	0	0	0	0	0	0	0	0	0	0	32	0	33
127		Eastgate Valley Area	Churchill		0	0	1	0	0	0	0	0	0	0	0	0	0	54	0	55
128		Dixie Valley	Churchill		0	0	18	0	0	7,760	8	0	0	0	0	218	0	71	262	8,337
128		Dixie Valley	Lander		0	0	0	0	0	0	0	0	0	0	0	0	0	3	0	3
128		Dixie Valley	Pershing		0	0	2	0	0	0	5,451	0	0	0	0	0	0	38	0	5,491
129		Buena Vista Valley	Churchill	C	0	0	0	0	0	0	0	0	0	0	0	0	0	0	0	0
129		Buena Vista Valley	Pershing	C	8	0	48	0	0	0	11,342	632	0	0	0	0	0	50	0	12,080
130		Pleasant Valley	Pershing		0	0	3	0	0	0	817	0	0	0	0	0	0	45	0	864

Basin Number	Sub	Basin Name	County	Inventory Type	COM	CON	DOM	ENV	EVP	IND	IRR	MM	MUN	OTH	PWR	QM	REC	STK	WLD	Total
131		Buffalo Valley	Humboldt		0	0	0	0	0	0	0	0	0	0	0	0	0	31	0	31
131		Buffalo Valley	Lander		0	0	1	828	0	0	0	3,288	0	0	0	0	0	36	0	4,153
131		Buffalo Valley	Pershing		0	0	0	0	0	0	3,542	0	0	0	0	0	0	0	0	3,542
132		Jersey Valley	Lander		0	0	0	0	0	0	0	0	0	0	0	0	0	0	0	0
132		Jersey Valley	Pershing		0	0	0	0	0	0	0	0	0	0	0	0	0	27	0	27
133		Edwards Creek Valley	Churchill		11	0	6	0	0	0	1,561	0	0	0	0	0	0	127	0	1,704
134		Smith Creek Valley	Churchill		0	0	0	0	0	0	0	0	0	0	0	0	0	0	0	0
134		Smith Creek Valley	Lander		0	0	4	0	0	0	1,260	0	0	0	0	0	0	45	0	1,308
134		Smith Creek Valley	Nye		0	0	0	0	0	0	0	0	0	0	0	0	0	0	0	0
135		Ione Valley	Mineral		0	0	1	0	0	0	0	0	0	0	0	0	0	0	0	1
135		Ione Valley	Nye		0	0	5	0	0	0	0	0	0	0	0	0	3	57	0	65
136		Monte Cristo Valley	Mineral		0	0	0	0	0	0	0	0	0	0	0	0	0	43	4	47
137	A	Big Smoky Valley - Tonopah Flat	Esmeralda		0	0	0	0	0	0	385	0	0	0	0	4	0	58	0	447
137	A	Big Smoky Valley - Tonopah Flat	Nye		0	0	57	0	0	608	2,534	9	0	0	0	11	0	166	0	3,384
137	B	Big Smoky Valley - Northern Part	Lander	C	2	0	33	0	0	0	2,369	0	0	0	0	60	0	95	0	2,560
137	B	Big Smoky Valley - Northern Part	Nye	C	16	0	129	0	0	0	6,241	5,153	0	46	0	480	0	54	0	12,119
138		Grass Valley	Eureka		0	0	1	0	0	0	142	0	0	0	0	0	0	0	0	143
138		Grass Valley	Lander		0	0	1	0	0	0	4,989	11	0	0	0	0	0	127	0	5,128
139		Kobeh Valley	Eureka	C	0	0	7	0	0	0	262	136	0	0	0	0	0	212	0	618
139		Kobeh Valley	Lander	C	0	0	1	0	0	0	1,518	0	0	0	0	0	0	32	0	1,551
140	A	Monitor Valley - Northern Part	Eureka		0	0	0	0	0	0	0	0	0	0	0	0	0	0	0	0
140	A	Monitor Valley - Northern Part	Lander		0	0	1	0	0	0	0	0	0	0	0	0	0	101	0	102
140	A	Monitor Valley - Northern Part	Nye		0	0	3	0	0	0	0	0	0	0	0	0	0	12	0	15
140	B	Monitor Valley - Southern Part	Nye		0	0	14	0	0	0	0	0	0	0	0	0	0	88	0	102
141		Ralston Valley	Nye		0	0	23	0	0	8	0	0	404	0	0	243	0	134	0	812
142		Alkali Spring Valley	Esmeralda		0	0	0	0	0	0	0	0	97	0	0	12	0	29	0	138
143		Clayton Valley	Esmeralda		0	0	1	0	0	0	0	12,264	17	0	0	43	0	38	0	12,362
144		Lida Valley	Esmeralda		0	0	3	0	0	0	0	0	0	0	0	30	0	20	0	53
144		Lida Valley	Nye		0	0	1	0	0	0	0	0	0	0	0	0	0	7	0	8
145		Stonewall Flat	Nye		0	0	0	0	0	0	0	0	0	0	0	0	0	12	0	12
146		Sarcobatus Flat	Esmeralda		0	0	1	0	0	0	0	0	0	0	0	0	0	7	0	8
146		Sarcobatus Flat	Nye		0	0	13	0	0	0	0	0	0	0	0	25	0	69	0	107
147		Gold Flat	Nye		0	0	0	0	0	0	0	0	0	0	0	380	0	11	0	391
148		Cactus Flat	Nye		0	0	0	0	0	0	0	0	0	0	0	85	0	5	0	90
149		Stone Cabin Valley	Nye		0	0	5	0	0	0	6,012	0	0	0	0	630	0	277	0	6,925
150		Little Fish Lake Valley	Nye		0	0	1	0	0	0	0	0	0	0	0	0	0	25	0	26
151		Antelope Valley	Eureka		0	0	1	0	0	0	90	0	0	0	0	0	0	158	0	249
151		Antelope Valley	Nye		0	0	0	0	0	0	0	0	0	0	0	0	0	0	0	0
152		Stevens Basin	Eureka		0	0	0	0	0	0	0	0	0	0	0	0	0	27	0	27
153		Diamond Valley	Elko	P	0	0	1	0	0	0	0	0	0	0	0	0	0	0	0	1
153		Diamond Valley	Eureka	P	6	0	117	0	0	0	62,860	485	96	0	0	138	0	621	0	64,323
153		Diamond Valley	White Pine	P	0	0	0	0	0	0	0	0	0	0	0	0	0	0	0	0
154		Newark Valley	Eureka	C	0	0	0	0	0	0	0	0	0	0	0	0	0	0	0	0
154		Newark Valley	White Pine	C	0	0	16	0	0	14	5,921	16	0	0	0	8	0	258	2	6,236
155	A	Little Smoky Valley - Northern Part	Eureka		0	0	2	0	0	0	9	0	0	0	0	0	0	39	0	50
155	A	Little Smoky Valley - Northern Part	Nye		0	0	0	0	0	0	33	0	0	0	0	0	0	55	0	88
155	A	Little Smoky Valley - Northern Part	White Pine		0	0	2	0	0	0	2,840	0	0	0	0	0	0	24	0	2,866
155	B	Little Smoky Valley - Central Part	Nye		0	0	0	0	0	0	0	0	0	0	0	0	0	5	0	5
155	C	Little Smoky Valley - Southern Part	Nye		0	0	0	0	0	0	0	0	0	0	0	0	0	57	0	57
156		Hot Creek Valley	Nye		0	0	6	0	0	22	1,545	0	0	0	0	6	0	156	0	1,735

Basin Number	Sub	Basin Name	County	Inventory Type	COM	CON	DOM	ENV	EVP	IND	IRR	MM	MUN	OTH	PWR	QM	REC	STK	WLD	Total
157		Kawich Valley	Nye		0	0	0	0	0	0	0	0	0	0	0	0	0	23	0	23
158	A	Emigrant Valley - Groom Lake Valley	Lincoln		0	0	0	0	0	0	0	0	0	0	0	0	0	0	0	0
158	A	Emigrant Valley - Groom Lake Valley	Nye		0	0	0	0	0	0	0	0	0	0	0	0	0	12	0	12
158	B	Emigrant Valley - Papoose Lake Valley	Lincoln		0	0	0	0	0	0	0	0	0	0	0	0	0	0	0	0
159		Yucca Flat	Nye		0	0	1	0	0	0	0	0	0	0	0	0	0	0	0	1
160		Frenchman Flat	Nye		0	0	0	0	0	0	0	0	0	0	0	0	0	0	0	0
161		Indian Springs Valley	Clark	P	14	0	81	0	0	0	88	0	316	0	0	138	0	0	0	637
161		Indian Springs Valley	Lincoln	P	0	0	0	0	0	0	0	0	0	0	0	0	0	0	0	0
161		Indian Springs Valley	Nye	P	0	0	0	0	0	0	0	0	0	0	0	0	0	0	0	0
162		Pahrump Valley	Clark	P	0	0	9	0	0	0	0	0	0	0	0	60	0	0	0	69
162		Pahrump Valley	Nye	P	605	8	5,806	0	0	44	1,354	2	4,474	0	0	581	927	0	0	13,801
163		Mesquite Valley (Sandy Valley)	Clark	P	6	0	461	0	0	0	37	0	0	0	0	122	0	0	0	626
164	A	Ivanpah Valley - Northern Part	Clark		13	0	94	0	0	395	0	0	0	0	0	113	0	10	0	625
164	B	Ivanpah Valley - Southern Part	Clark		0	0	2	1	0	0	0	0	0	0	0	751	0	4	3	760
165		Jean Lake Valley	Clark		0	0	1	0	0	0	0	0	0	0	0	0	0	10	0	11
166		Hidden Valley	Clark		0	0	0	0	0	0	0	1	0	0	0	0	0	7	0	8
167		Eldorado Valley	Clark		0	0	9	0	0	0	0	255	0	0	0	0	0	10	0	274
168		Three Lakes Valley - Northern Part	Lincoln		0	0	0	0	0	0	0	0	0	0	0	0	0	0	0	0
169	A	Tikapoo Valley - Northern Part	Lincoln		0	0	0	0	0	0	0	0	0	0	0	0	0	12	0	12
169	B	Tikapoo Valley - Southern Part	Lincoln		0	0	0	0	0	0	0	0	0	0	0	0	0	0	0	0
170		Penoyer Valley (Sand Spring Valley)	Lincoln	P	3	0	46	0	0	0	9,780	0	0	0	0	3	0	61	0	9,893
170		Penoyer Valley (Sand Spring Valley)	Nye	P	0	0	0	0	0	0	0	0	0	0	0	0	0	0	0	0
171		Coal Valley	Lincoln		0	0	1	0	0	0	0	0	0	0	0	0	0	92	0	93
171		Coal Valley	Nye		0	0	0	0	0	0	0	0	0	0	0	0	0	25	0	25
172		Garden Valley	Lincoln		0	0	0	0	0	0	85	0	0	0	0	0	0	46	0	130
172		Garden Valley	Nye		0	0	7	0	0	0	220	0	0	0	0	0	0	25	0	252
173	A	Railroad Valley - Southern Part	Nye		0	0	1	0	0	0	2,990	0	0	0	0	0	0	246	0	3,237
173	B	Railroad Valley - Northern Part	Lincoln		0	0	0	0	0	0	0	0	0	0	0	0	0	0	0	0
173	B	Railroad Valley - Northern Part	Nye		1	0	34	0	0	72	9,764	0	0	0	0	0	1,994	164	0	12,029
173	B	Railroad Valley - Northern Part	White Pine		0	0	1	0	0	0	0	6	0	0	0	0	0	8	0	15
174		Jakes Valley	White Pine		0	0	0	0	0	0	0	0	0	0	0	0	0	28	0	28
175		Long Valley	Elko		0	0	0	0	0	0	0	0	0	0	0	0	0	0	0	0
175		Long Valley	White Pine		0	0	0	0	0	0	0	801	0	0	0	0	0	285	0	1,086
176		Ruby Valley	Elko		7	0	121	0	0	0	8,213	0	0	0	0	24	0	864	1	9,230
176		Ruby Valley	White Pine		0	0	1	0	0	0	0	417	0	0	0	0	0	18	0	436
177		Clover Valley	Elko	C	34	0	58	0	0	46	8,108	0	0	0	0	15	0	305	0	8,567
178	A	Butte Valley - Northern Part	Elko		0	0	2	0	0	0	0	0	0	0	0	0	0	121	0	123
178	B	Butte Valley - Southern Part	Elko		0	0	0	0	0	0	0	0	0	0	0	0	0	14	0	14
178	B	Butte Valley - Southern Part	White Pine		0	0	0	0	0	0	0	0	0	0	0	0	0	178	0	178
179		Steptoe Valley	Elko	C	0	0	4	0	0	0	629	0	0	0	0	0	0	27	0	660
179		Steptoe Valley	White Pine	C	34	0	489	0	0	0	28,340	6,533	2,032	0	0	1,311	29	268	2	39,039
180		Cave Valley	Lincoln		0	0	4	0	0	0	0	0	0	0	0	0	0	0	0	4
180		Cave Valley	White Pine		0	0	1	0	0	0	0	0	0	0	0	0	0	50	0	51
181		Dry Lake Valley	Lincoln		0	0	2	0	0	0	0	0	0	0	0	0	0	77	0	79
182		Delamar Valley	Lincoln		0	0	0	0	0	0	0	0	0	0	0	0	0	7	0	7
183		Lake Valley	Lincoln	C	0	0	23	0	0	0	15,765	0	0	0	0	13	0	290	0	16,091
183		Lake Valley	Nye	C	0	0	1	0	0	0	0	0	0	0	0	0	0	41	0	42
184		Spring Valley	Lincoln		0	0	0	0	0	0	0	0	0	0	0	0	0	86	0	86
184		Spring Valley	White Pine		0	0	20	0	0	0	8,981	79	0	0	0	78	0	321	58	9,536
185		Tippett Valley	White Pine		0	0	0	0	0	0	274	0	0	0	0	0	0	14	0	288

Basin Number	Sub	Basin Name	County	Inventory Type	COM	CON	DOM	ENV	EVP	IND	IRR	MM	MUN	OTH	PWR	QM	REC	STK	WLD	Total
186	A	Antelope Valley - Southern Part	Elko		0	0	0	0	0	0	0	3	0	0	0	0	0	0	0	3
186	A	Antelope Valley - Southern Part	White Pine		0	0	0	0	0	0	0	0	0	0	0	0	0	25	0	25
186	B	Antelope Valley - Northern Part	Elko		0	0	1	0	0	0	0	0	0	0	0	0	0	172	0	173
187		Goshute Valley	Elko		0	0	8	0	0	0	0	0	1,753	0	0	64	0	532	0	2,357
188		Independence Valley (Pequop Valley)	Elko		0	0	19	0	0	0	3,887	0	0	0	0	37	0	254	0	4,197
189	A	Thousand Springs Valley - Herrill Siding Area	Elko		0	0	15	0	0	0	26	0	0	0	0	0	0	269	0	311
189	B	Thousand Springs Valley - Toano Area	Elko		0	0	9	0	0	0	0	0	0	0	0	5	0	505	6	526
189	C	Thousand Springs Valley - Rocky Butte Area	Elko		0	0	0	0	0	0	384	0	0	0	0	0	0	62	0	446
189	D	Thousand Springs Valley - Montello Area	Elko		8	0	56	0	0	0	8,009	0	0	0	0	0	0	402	0	8,475
190		Grouse Creek Valley	Elko		0	0	0	0	0	0	0	0	0	0	0	0	0	33	0	33
191		Pilot Creek Valley	Elko		0	7	101	0	0	0	99	38	0	0	0	0	0	130	0	375
192		Great Salt Lake Desert	Elko		0	0	1	0	0	0	0	0	0	0	0	0	0	6	0	7
193		Deep Creek Valley	White Pine		0	0	1	0	0	0	0	0	0	0	0	0	0	0	0	1
194		Pleasant Valley	White Pine		0	0	0	0	0	0	374	0	0	0	0	0	0	0	0	374
195		Snake Valley	White Pine		9	0	40	0	0	0	6,717	0	0	0	0	56	0	53	0	6,875
196		Hamlin Valley	Lincoln		0	0	0	0	0	0	0	0	0	9	0	0	0	388	0	397
196		Hamlin Valley	White Pine		0	0	1	0	0	0	0	0	0	0	0	0	0	0	0	1
197		Escalante Desert	Lincoln		0	0	0	0	0	0	0	0	0	0	0	0	0	6	0	6
198		Dry Valley	Lincoln	P	0	0	32	0	0	0	5,219	0	0	0	0	0	10	7	0	5,268
199		Rose Valley	Lincoln	P	0	0	8	0	0	0	557	0	0	0	0	0	0	0	0	565
200		Eagle Valley	Lincoln		0	0	40	0	0	0	176	0	0	0	0	4	0	0	0	220
201		Spring Valley	Lincoln		0	0	7	0	0	0	1,069	0	0	0	0	9	1	0	0	1,085
202		Patterson Valley	Lincoln		0	0	36	0	0	0	2,498	0	582	0	0	4	0	41	1	3,163
203		Panaca Valley	Lincoln	P	60	0	148	0	0	0	14,048	13	309	0	0	15	0	2	0	14,595
204		Clover Valley	Lincoln		0	0	11	0	0	13	999	0	0	0	0	2	11	101	0	1,138
205		Lower Meadow Valley Wash	Clark		26	0	14	0	0	0	431	0	0	0	0	4	0	0	0	475
205		Lower Meadow Valley Wash	Lincoln		3	0	25	0	0	0	1,137	0	427	0	0	0	3	11	0	1,605
206		Kane Springs Valley	Lincoln		0	0	0	0	0	0	0	0	0	0	0	0	0	0	0	0
207		White River Valley	Lincoln		0	0	0	0	0	0	0	0	0	0	0	0	0	0	0	0
207		White River Valley	Nye		0	0	54	0	0	0	1,868	0	0	0	0	10	14	118	0	2,065
207		White River Valley	White Pine		9	0	174	0	0	0	12,013	0	0	0	0	48	2	299	0	12,545
208		Pahroc Valley	Lincoln		0	0	1	0	0	0	0	0	0	0	0	0	0	9	0	10
208		Pahroc Valley	Nye		0	0	0	0	0	0	0	0	0	0	0	0	0	22	0	22
209		Pahranagat Valley	Lincoln	P	37	0	127	0	0	0	4,512	0	442	0	0	2	0	22	7	5,149
210		Coyote Spring Valley	Clark	P	0	0	0	0	0	0	0	0	1,691	0	0	0	0	0	0	1,691
210		Coyote Spring Valley	Lincoln	P	550	0	2	0	0	0	0	0	0	0	0	0	0	0	0	552
211		Three Lakes Valley - Southern Part	Clark		0	0	2	0	0	0	0	0	0	0	0	1,582	0	0	0	1,584
212		Las Vegas Valley	Clark	P	976	0	4,172	3,285	0	257	2,535	2,060	45,829	105	0	9,842	5,203	23	78	74,365
213		Colorado River Valley	Clark		6	0	26	0	0	0	0	0	3	0	0	610	134	11	0	791
214		Piute Valley	Clark		10	0	13	0	0	0	0	0	200	0	0	303	0	45	0	571
215		Black Mountains Area	Clark	P	0	0	0	0	0	1,578	0	18	0	0	0	10	0	0	0	1,606
216		Garnet Valley	Clark	P	13	18	0	0	0	600	0	152	695	0	0	157	0	0	0	1,635
217		Hidden Valley (North)	Clark		0	0	0	0	0	0	0	0	0	0	0	0	0	0	0	0
218		California Wash	Clark	P	0	0	7	0	0	0	0	0	612	0	0	0	0	0	0	619
219		Muddy River Springs Area	Clark	P	24	0	49	0	0	19	111	0	2,554	0	0	3	0	0	0	2,760
220		Lower Moapa Valley	Clark		116	0	34	24	0	0	1,152	77	0	0	0	0	0	0	0	1,403
221		Tule Desert	Lincoln		0	0	0	0	0	0	0	0	0	0	0	0	0	8	0	8
222		Virgin River Valley	Clark		0	0	24	0	0	0	0	0	7,483	0	0	179	0	29	0	7,716
222		Virgin River Valley	Lincoln		0	0	0	0	0	0	0	0	1,392	0	0	0	15	23	0	1,430
223		Gold Butte Area	Clark		0	0	0	0	0	0	0	0	0	0	0	0	0	0	0	0

Basin Number	Sub	Basin Name	County	Inventory Type	COM	CON	DOM	ENV	EVP	IND	IRR	MM	MUN	OTH	PWR	QM	REC	STK	WLD	Total
224		Greasewood Area	Clark		0	0	0	0	0	0	0	0	0	0	0	0	0	0	0	0
225		Mercury Valley	Nye		0	0	0	0	0	0	0	0	0	0	0	0	0	0	0	0
226		Rock Valley	Nye		0	0	0	0	0	0	0	0	0	0	0	0	0	0	0	0
227	A	Forty Mile Canyon - Jackass Flat	Nye		0	0	2	0	0	0	0	0	0	0	0	0	0	17	0	19
227	B	Forty Mile Canyon - Buckboard Mesa	Nye		0	0	0	0	0	0	0	0	0	0	0	0	0	0	0	0
228		Oasis Valley	Nye		6	0	26	0	0	0	24	0	29	0	0	0	50	2	0	137
229		Crater Flat	Nye		0	0	0	0	0	0	0	257	0	0	0	0	0	0	0	257
230		Amargosa Desert	Nye	P	1,236	0	255	0	0	0	15,154	282	182	0	0	328	0	0	8	17,445
231		Grapevine Canyon	Esmeralda		0	0	0	0	0	0	0	0	0	0	0	0	0	12	0	12
231		Grapevine Canyon	Nye		0	0	0	0	0	0	0	0	0	0	0	0	0	0	0	0
232		Oriental Wash	Esmeralda		0	0	0	0	0	0	0	0	0	0	0	0	0	9	0	9
TOTAL					8,917	454	44,680	9,345	488	49,367	898,496	103,841	135,388	1,255	2,575	39,180	16,183	22,803	3,672	1,336,646