

**STATE OF NEVADA**  
**DEPARTMENT OF CONSERVATION AND NATURAL RESOURCES**  
**DIVISION OF WATER RESOURCES**

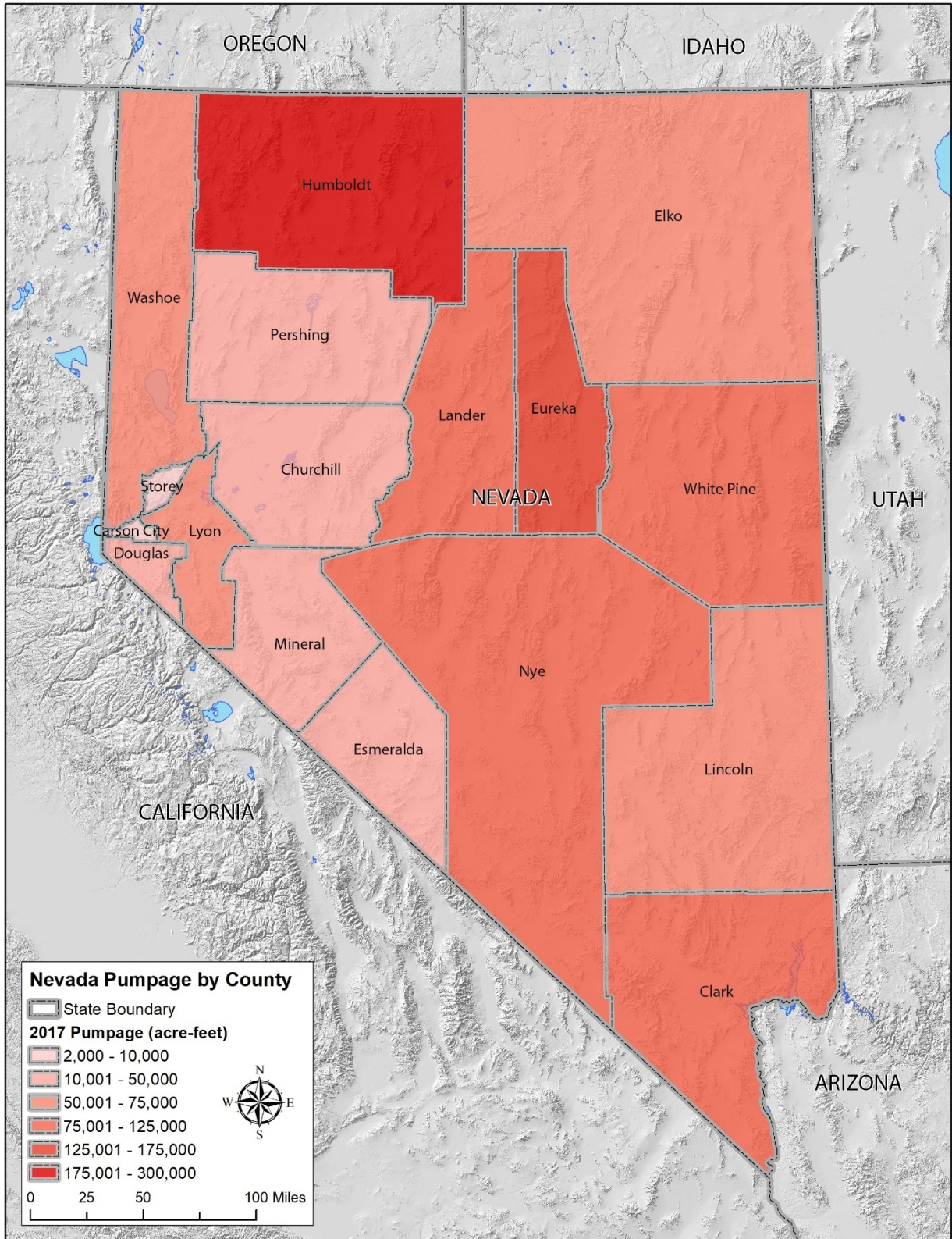
**ADAM SULLIVAN, P.E.**  
**ACTING STATE ENGINEER**



**STATEWIDE GROUNDWATER PUMPAGE INVENTORY**

**CALENDAR YEAR 2017**

**January 27, 2021**



**TABLE OF CONTENTS**

	Page
ABSTRACT.....	1
STATEWIDE SUMMARY .....	2
PURPOSE AND SCOPE.....	3
SOURCES OF DATA AND METHODS TO ESTIMATE PUMPAGE .....	3
IRRIGATION .....	3
MINING AND MILLING.....	4
STOCKWATERING .....	4
DOMESTIC .....	5
OTHER MANNERS OF USE .....	5
TABLES .....	6
FIGURES.....	7
APPENDIX A. GROUNDWATER PUMPAGE BY BASIN AND MANNER OF USE.....	30

**LIST OF TABLES**

	Page
Table 1. Estimated 2017 groundwater pumpage (acre-feet) by county and manner of use.....	6

**LIST OF FIGURES**

	Page
Figure 1. Comparison between committed water resources and pumpage for 2017 by manner of use.....	2
Figure 2. Estimated 2017 groundwater pumpage (acre-feet) graphed by county and manner of use.....	7
Figure 3. Groundwater wells in Carson City, Douglas, Lyon, and Storey Counties.....	8
Figure 4. Groundwater wells in Churchill County.....	9
Figure 5. Groundwater wells in Clark County.....	10
Figure 6. Groundwater wells in Elko County.....	11
Figure 7. Groundwater wells in Esmeralda and Mineral Counties.....	12
Figure 8. Groundwater wells in Eureka and Lander Counties.....	13
Figure 9. Groundwater wells in Humboldt County.....	14
Figure 10. Groundwater wells in Lincoln County.....	15
Figure 11. Groundwater wells in Nye County.....	16

Figure 12. Groundwater wells in Pershing County.....	17
Figure 13. Groundwater wells in northern Washoe County. ....	18
Figure 14. Groundwater wells in southern Washoe County.....	19
Figure 15. Groundwater wells in White Pine County.....	20
Figure 16. Carson City pumpage by manner of use.....	21
Figure 17. Churchill County pumpage by manner of use.....	21
Figure 18. Clark County pumpage by manner of use. ....	22
Figure 19. Douglas County pumpage by manner of use.....	22
Figure 20. Elko County pumpage by manner of use. ....	23
Figure 21. Esmeralda County pumpage by manner of use. ....	23
Figure 22. Eureka County pumpage by manner of use.....	24
Figure 23. Humboldt County pumpage by manner of use.....	24
Figure 24. Lander County pumpage by manner of use.....	25
Figure 25. Lincoln County pumpage by manner of use.....	25
Figure 26. Lyon County pumpage by manner of use.....	26
Figure 27. Mineral County pumpage by manner of use. ....	26
Figure 28. Nye County pumpage by manner of use. ....	27
Figure 29. Pershing County pumpage by manner of use. ....	27
Figure 30. Storey County pumpage by manner of use.....	28
Figure 31. Washoe County pumpage by manner of use. ....	28
Figure 32. White Pine County pumpage by manner of use. ....	29

## ABSTRACT

This report presents an estimate of the total amount of groundwater pumped in the State of Nevada for calendar year 2017. The estimate includes pumpage of all public waters appropriated by permits and certificates issued by the State Engineer, by adjudicated and unadjudicated pre-statutory claims of vested right, and by domestic wells. Primary sources of data were existing inventories, pumpage records from water right owners, duty of water rights, and known irrigated acres. Methods to estimate pumpage from these data sources are described herein. The pumpage amounts are organized by manner of use and presented by county and hydrographic basin. Graphs showing the pumpage for each county are included in this report, as well as maps showing the location of groundwater wells within each county. Surface water use is not included in this report.

Total groundwater pumpage in Nevada for calendar year 2017 is estimated to be approximately **1,200,000 acre-feet**. The largest manner of use is irrigation at 69% of total statewide pumpage. Other large uses are municipal (10%) and mining and milling (8%). Pumpage by domestic wells is estimated to be approximately 4% of total statewide pumpage.

## STATEWIDE SUMMARY

Committed water resource data for the state are summarized by manner of use below. Actual groundwater pumpage totals for calendar year 2017 are presented by manner of use in Figure 1.

COMMITTED GROUNDWATER RESOURCE: 3,036,240 ACRE-FEET, DATE: September 2017

COMMERCIAL	17,702	CONSTRUCTION	2,101	DOMESTIC <sup>1</sup>	100,828
ENVIRONMENTAL	23,507	INDUSTRIAL	116,320	IRRIGATION	1,836,026
MINING & MILLING	388,074	MUNICIPAL	394,902	OTHER	4,186
POWER	0	QUASI-MUNICIPAL	90,631	RECREATION	25,512
STOCKWATERING	24,317	WILDLIFE	12,134		

Note: Committed groundwater resource data are accurate for September 2017. Manner of use totals vary over time, as rights are not necessarily static. Individual rights may be subject to change applications, certification, withdrawals, and cancellations; each of these circumstances could affect the duty, diversion rate, and acreage associated with a given right. The value associated with each manner of use category does not include those portions that have been relinquished in support of domestic wells, but does include groundwater supplemental to surface water.

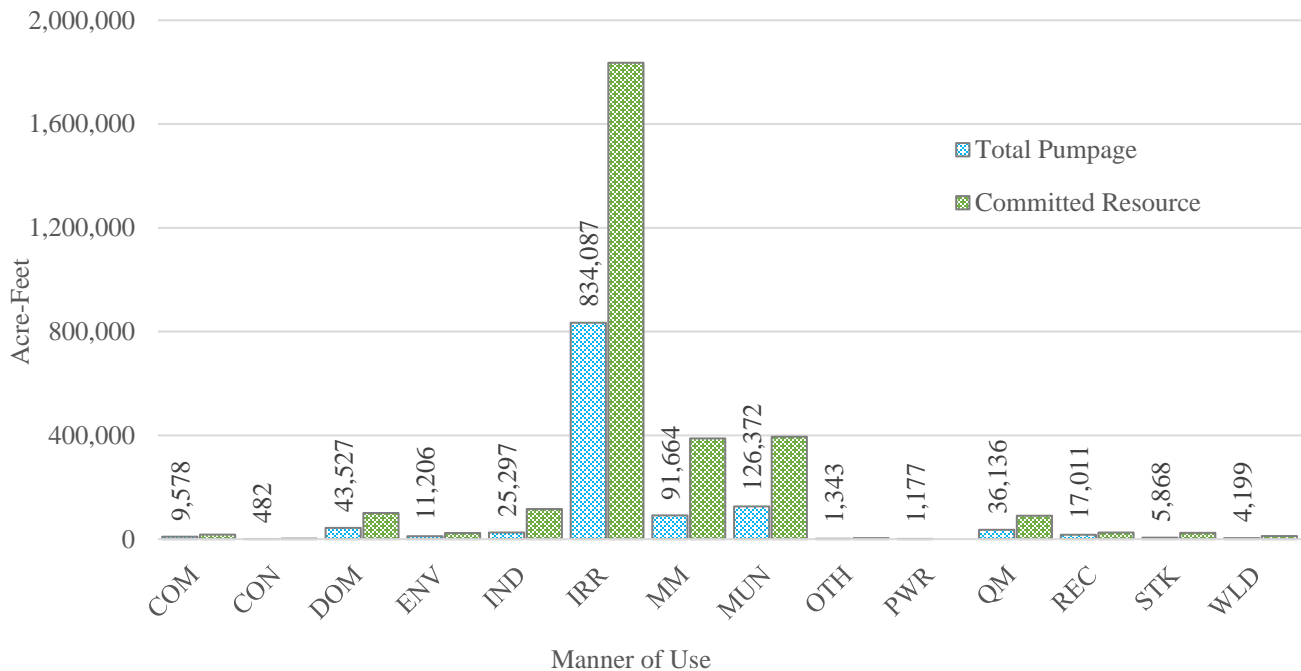


Figure 1. Comparison between committed water resources and pumpage for 2017 by manner of use.

<sup>1</sup> Committed domestic resource was calculated by multiplying the number of exempt domestic wells by 2 acre-feet per annum. The total number of domestic wells, determined by a query of the Nevada Division of Water Resources Well Log Database, is estimated to be 50,414.

## PURPOSE AND SCOPE

The purpose of this report is to inventory all the groundwater resources allocated and described by the Office of the State Engineer, Nevada Division of Water Resources (NDWR). The estimated amount of groundwater pumped under permits, certificates, adjudicated and unadjudicated vested claims, and exempt domestic wells within the State of Nevada for calendar year 2017 is described in the following sections.

The U.S. Geological Survey (USGS) publishes groundwater use for all states at 5-year intervals. The most recent publication, USGS Circular 1405<sup>2</sup>, was released in 2014 and summarizes pumpage in each state by county for the year 2010. The USGS is currently preparing water use estimates for 2017; these estimates will be presented by county and hydrologic unit code level 8. In general, the methods used by the USGS to estimate pumpage are different from the methods used by NDWR and therefore the reports are not directly comparable.

## SOURCES OF DATA AND METHODS TO ESTIMATE PUMPAGE

NDWR conducts annual pumpage and crop inventories for numerous individual hydrographic basins throughout the State. All reported data were incorporated into this statewide assessment. Inventory data from 2016 were used if the 2017 inventory was not available and several prior inventories were reasonably consistent. If inventories were completed for water year instead of calendar year, then water year totals were used to estimate calendar year totals. Methods describing the estimation of water usage are contained in each of these inventory reports.

Pumpage totals are often recorded by water right owners and reported to NDWR as a condition of the permit under which the groundwater was appropriated. Where these data was available, it was accounted for in this statewide report. If 2017 reported pumpage was not available but reported pumpage from several prior years was reasonably consistent, then total pumpage data from the most recent year was used. For some permitted mine dewatering and geothermal development where a substantial volume of water was recharged into the aquifer and that volume was reported to the State Engineer, the recharged water was subtracted to obtain the total pumpage presented in this report. For purposes of allocating pumpage by county and hydrographic basin, all pumpage was assigned to its permitted point of diversion.

Supplemental group relationships were resolved prior to estimating groundwater pumpage for all manners of use. Where supplemental groups contained permits with multiple manners of use, the estimated pumpage was assigned to the manner of use associated with the senior permit in the group.

Table 1 and Figure 2 present statewide pumpage data, broken down by county and manner of use. Figures 3 to 15 present maps showing groundwater wells for individual counties; Figures 16 to 32 show manner of use data for each county.

## IRRIGATION

Irrigation pumpage that was not inventoried or reported was estimated by using 2017 National Agriculture Imagery Program (NAIP) imagery and normalized difference vegetation index (NDVI) data. Maximum NDVI was used to determine where crops were irrigated between May 1 and September 30, 2017, using

---

<sup>2</sup> Maupin, M.A., Kenny, J.F., Hutson, S.S., Lovelace, J.K., Barber, N.L., and Linsey, K.S., 2014, Estimated use of water in the United States in 2010: U.S. Geological Survey Circular 1405, 56 p., <https://dx.doi.org/10.3133/cir1405>.

the web-based Climate Engine<sup>3</sup> tool. Year 2017 NAIP imagery was used to determine the number of acres under cultivation and the method in which the water was applied (pivot, wheel line, flood). Assumed efficiencies were 0.85 for pivot, 0.75 for wheel lines, and 0.60 for flood. Pumpage was then determined by multiplying the number of acres by the net irrigation water requirement rate (either for low-managed pasture grass or alfalfa, depending on whether the crops appeared to be sparse or full-cover and well-watered)<sup>4</sup>, then dividing by the efficiency of the application method. If the resulting pumpage estimate exceeded the duty of the right, then duty was used as total pumpage. If the maximum NDVI indicated that irrigation occurred during the period of inquiry, it was assumed that irrigation occurred over the entire season.

Groundwater pumpage that was permitted or certificated as a supplemental right to surface water, and was not inventoried or reported, was estimated based on streamflow in 2017. In the Humboldt River system below Palisade, groundwater pumpage supplemental to decreed surface water was estimated to be 10% of the total duty. Elsewhere in the State, groundwater pumpage supplemental to streams was estimated to be 50% to 75% of duty. Groundwater pumpage supplemental to springs was assumed to be 50% statewide, except in the White River Valley where it was calculated to be 37% based on spring flow measurements. Note that 2017 was an exceptionally wet year across most of the west, and Nevada was no exception.

#### MINING AND MILLING

Groundwater use for mining and milling projects was estimated by basin and county primarily by reviewing reported pumpage and recharge data (where applicable). Where these data were not available, permits, records from the Nevada Division of Minerals, and NAIP imagery were examined to determine whether the project appeared to be operating. If the projects appeared operational, duty was assigned as pumpage. If the project did not appear operational, pumpage was estimated to be zero. Included in consumptive use estimates are evaporative or enhanced evapotranspiration losses due to discharge of groundwater pumped for dewatering to rapid infiltration basins, for irrigation, or to surface water, where these data were available.

#### STOCKWATERING

Stockwatering use estimates were provided at the county level by the USGS, based on animal unit numbers contained in the Nevada Agricultural Statistics Annual Bulletin – 2017 Crop Year<sup>5</sup>. These data were then used to estimate stockwater consumption at the basin level by determining the duty of stockwater permits in each basin (from a query of the NDWR Permits Database), dividing the duty of each permit by the total duty of permits in the county, and multiplying the result by the USGS's total county stockwater consumption number.

---

<sup>3</sup> Huntington, J., Hegewisch, K., Daudert, B., Morton, C., Abatzoglou, J., McEvoy, D., and Erickson, T. (2017). Climate Engine: Cloud Computing of Climate and Remote Sensing Data for Advanced Natural Resource Monitoring and Process Understanding. Bulletin of the American Meteorological Society, <http://journals.ametsoc.org/doi/abs/10.1175/BAMS-D-15-00324.1>

<sup>4</sup> Huntington, J.L., and Allen, R.G. 2010. Evapotranspiration and net irrigation water requirements for Nevada. Nevada Division of Water Resources; [http://water.nv.gov/mapping/et/Docs/Evapotranspiration\\_and\\_Net\\_Irrigation\\_Requirements\\_for\\_Nevada\\_Compiled.pdf](http://water.nv.gov/mapping/et/Docs/Evapotranspiration_and_Net_Irrigation_Requirements_for_Nevada_Compiled.pdf).

<sup>5</sup> Rumberg, S. 2017. *Nevada Agricultural Statistics Annual Bulletin 2017 Crop Year*. United States Department of Agriculture; [https://www.nass.usda.gov/Statistics\\_by\\_State/Nevada/Publications/Annual\\_Statistical\\_Bulletin/2010s/201702NVCropYr2017.pdf](https://www.nass.usda.gov/Statistics_by_State/Nevada/Publications/Annual_Statistical_Bulletin/2010s/201702NVCropYr2017.pdf).



## DOMESTIC

Domestic use was estimated based on the number of active domestic wells in each basin. This number was determined by querying the NDWR Well Log Database, and multiplying the resulting number of wells by the appropriate number of acre-feet per year. In most basins, the assumed annual pumpage for each well is one acre-foot; however, in some of the inventoried basins, the assumed annual pumpage is less than one acre-foot per well.

## OTHER MANNERS OF USE

For all other manners of use that were not inventoried or reported, pumpage was estimated by a query of the NDWR Permits Database for water rights that were certificated, permitted with a proof of completion filed, or claimed as pre-statutory vested rights. If water rights were known to be inactive based on examination of the permit file or other records, it was assumed that no pumpage occurred. Otherwise, the water rights were assumed to be active and pumpage was estimated to be the annual duty associated with the certificate, permit, or claim.

## TABLES

Table 1. Estimated 2017 groundwater pumpage (acre-feet) by county and manner of use.

Manner of Use	COM	CON	DOM	ENV	IND	IRR	MM	MUN	OTH	PWR	QM	REC	STK	WLD	Total
Carson City	21	0	1,032	0	7	94	0	4,756	0	0	65	0	2	0	5,976
Churchill	729	1	4,192	151	4,883	6,141	9	2,178	0	0	2,005	131	341	326	21,087
Clark	1,297	439	5,746	3,240	3,238	6,209	2,989	57,177	0	0	10,203	5,494	21	143	96,197
Douglas	221	0	4,076	352	232	9,339	0	8,177	130	0	5,741	653	130	1,879	30,928
Elko	788	10	3,431	503	1,361	48,426	2,116	11,755	166	0	1,402	260	1,499	18	71,736
Esmeralda	16	0	223	0	0	28,894	9,928	153	1	0	414	181	80	0	39,890
Eureka	14	0	232	12	1,837	92,751	34,489	113	0	0	151	0	497	0	130,097
Humboldt	467	6	1,886	0	5,231	260,455	7,811	3,298	899	0	312	820	295	45	281,526
Lander	2	0	601	1,889	997	79,413	7,554	923	0	1,177	213	49	275	0	93,095
Lincoln	668	0	462	0	17	57,623	11	3,213	9	0	78	43	213	69	62,406
Lyon	1,325	1	4,542	0	4,550	39,306	268	7,625	0	0	1,831	5,163	254	109	64,973
Mineral	35	0	96	7	72	6,320	1,128	1,076	0	0	1,891	0	64	304	10,994
Nye	2,666	4	6,219	0	868	63,752	11,886	4,565	46	0	2,613	2,824	746	5	96,195
Pershing	77	0	498	10	0	37,085	1,354	1,058	0	0	152	5	87	7	40,332
Storey	6	0	899	0	529	0	29	791	0	0	1,458	0	0	21	3,733
Washoe	1,194	22	8,690	5,042	1,422	18,432	0	14,335	91	0	6,148	1,358	1,075	1,211	59,021
White Pine	51	0	699	0	53	79,847	12,090	5,180	0	0	1,457	31	289	62	99,759
<b>Total Pumpage</b>	<b>9,578</b>	<b>482</b>	<b>43,527</b>	<b>11,206</b>	<b>25,297</b>	<b>834,087</b>	<b>91,664</b>	<b>126,372</b>	<b>1,343</b>	<b>1,177</b>	<b>36,136</b>	<b>17,011</b>	<b>5,868</b>	<b>4,199</b>	<b>1,207,946</b>

## FIGURES

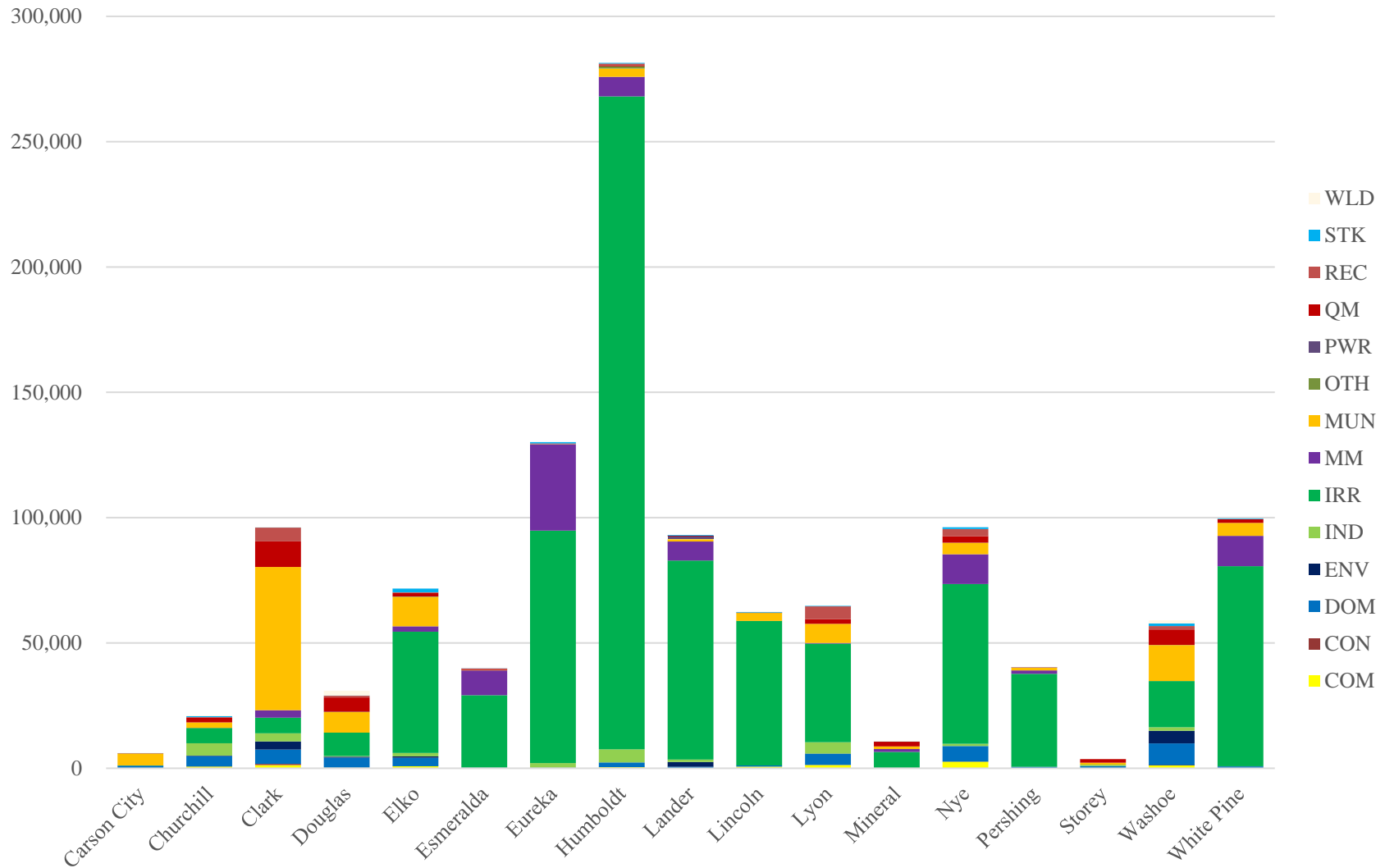


Figure 2. Estimated 2017 groundwater pumpage (acre-feet) graphed by county and manner of use.

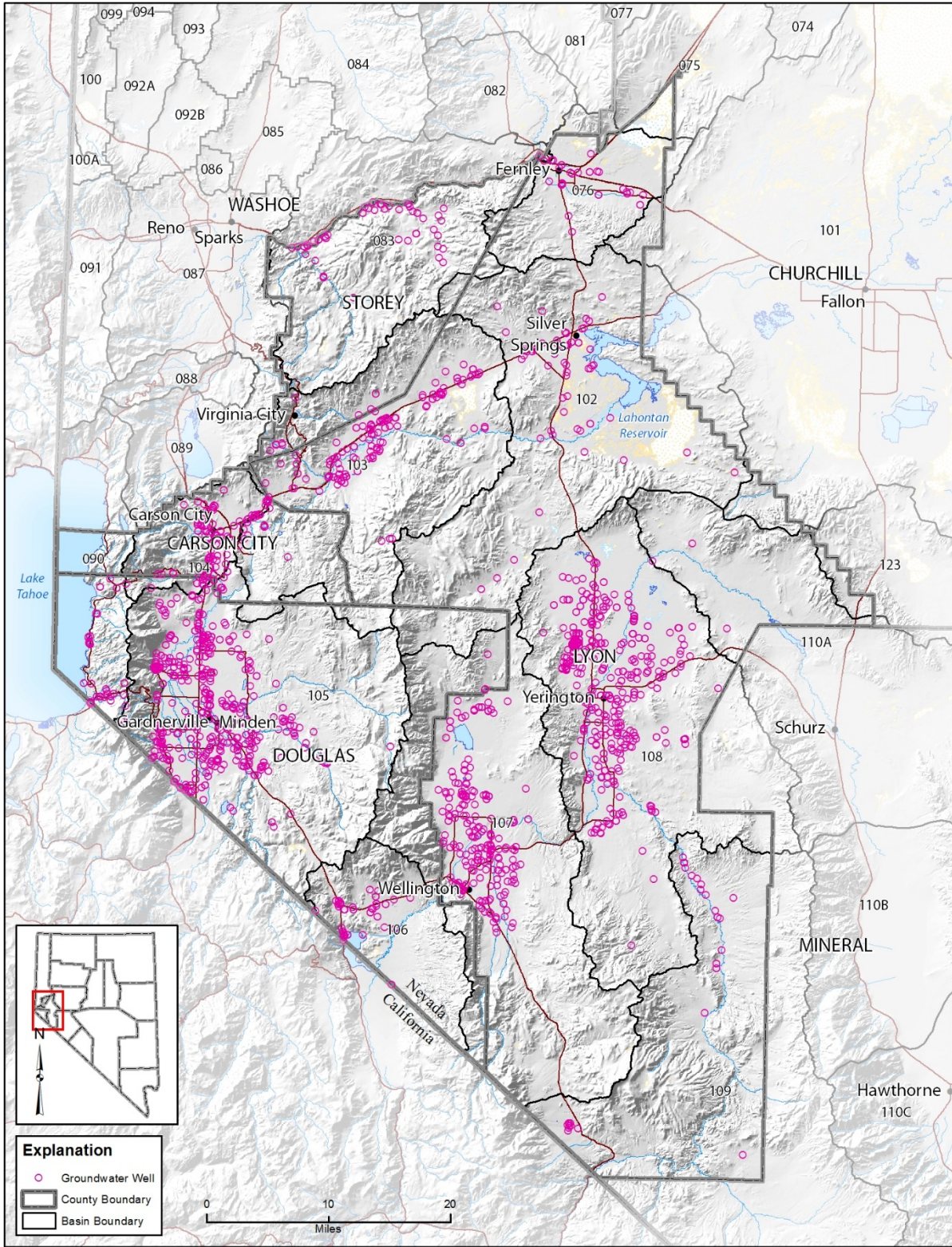


Figure 3. Groundwater wells in Carson City, Douglas, Lyon, and Storey Counties.

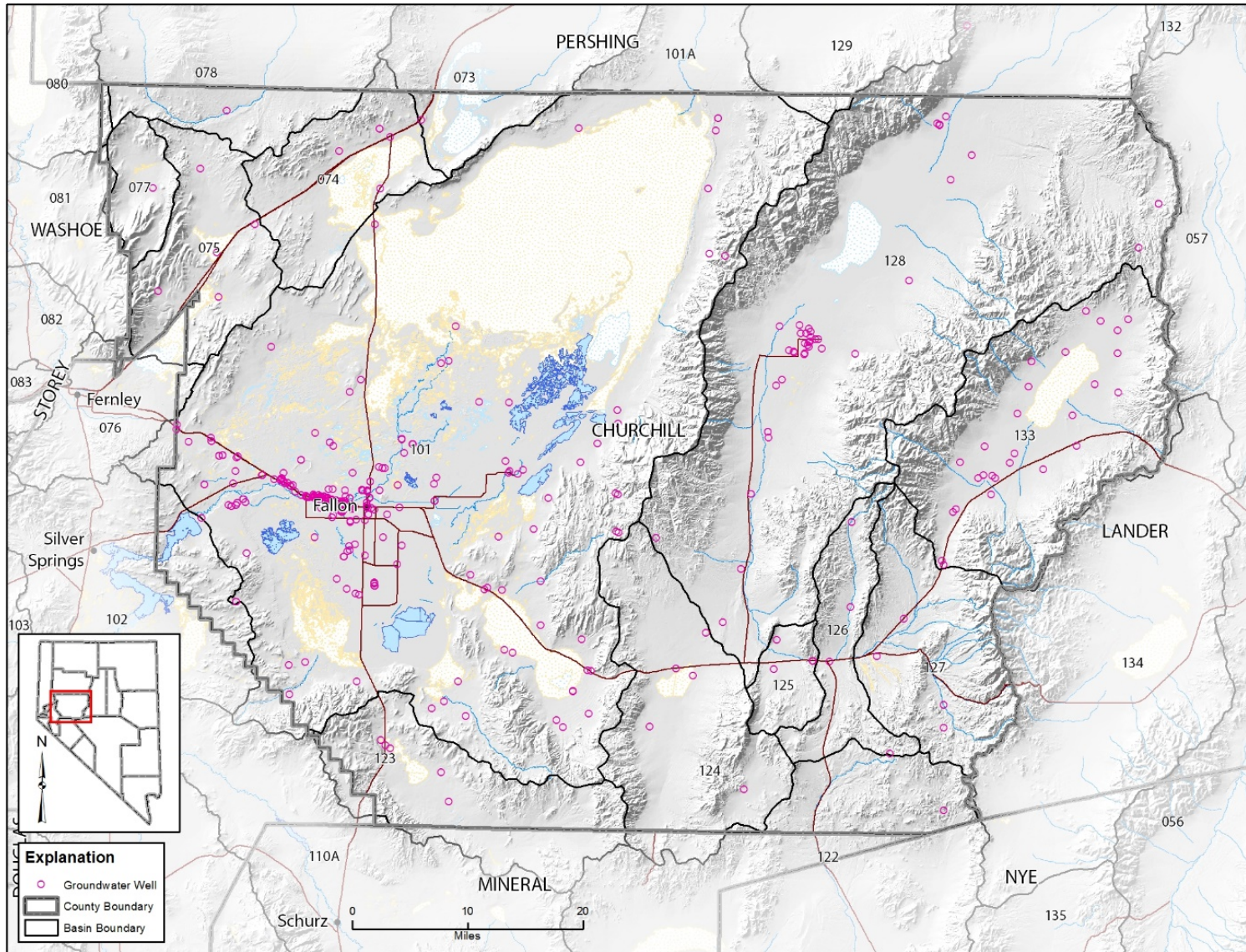


Figure 4. Groundwater wells in Churchill County.

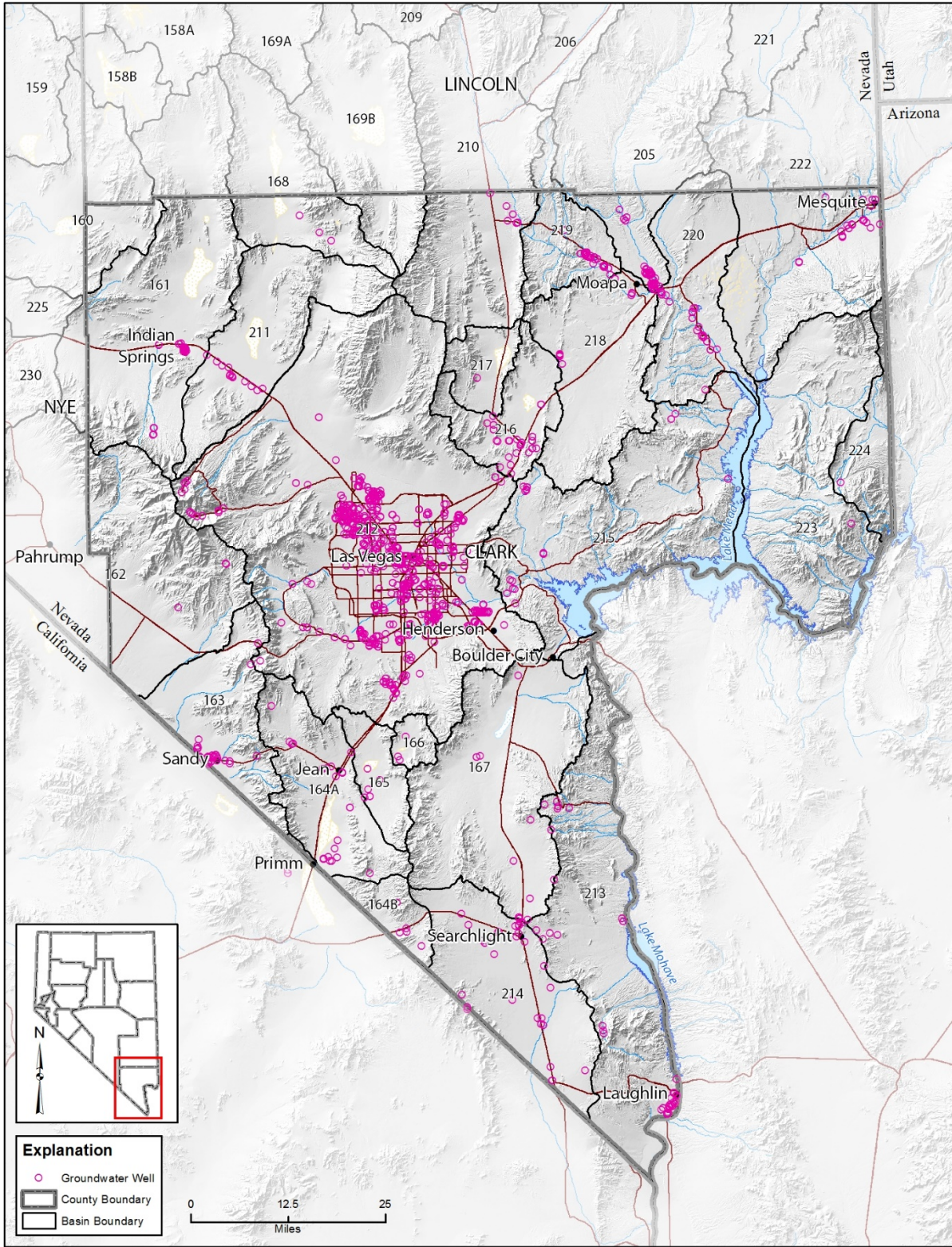


Figure 5. Groundwater wells in Clark County.

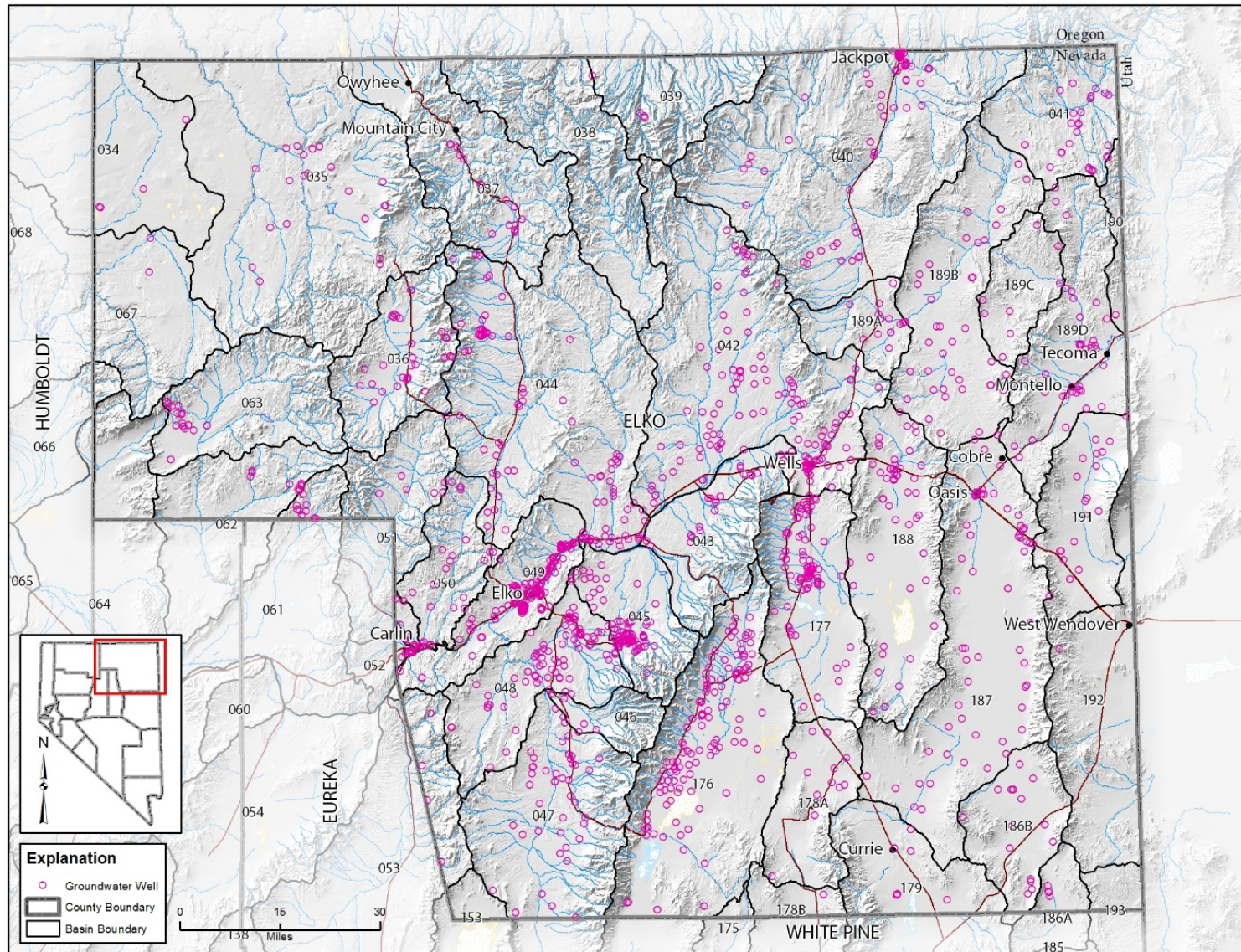


Figure 6. Groundwater wells in Elko County.

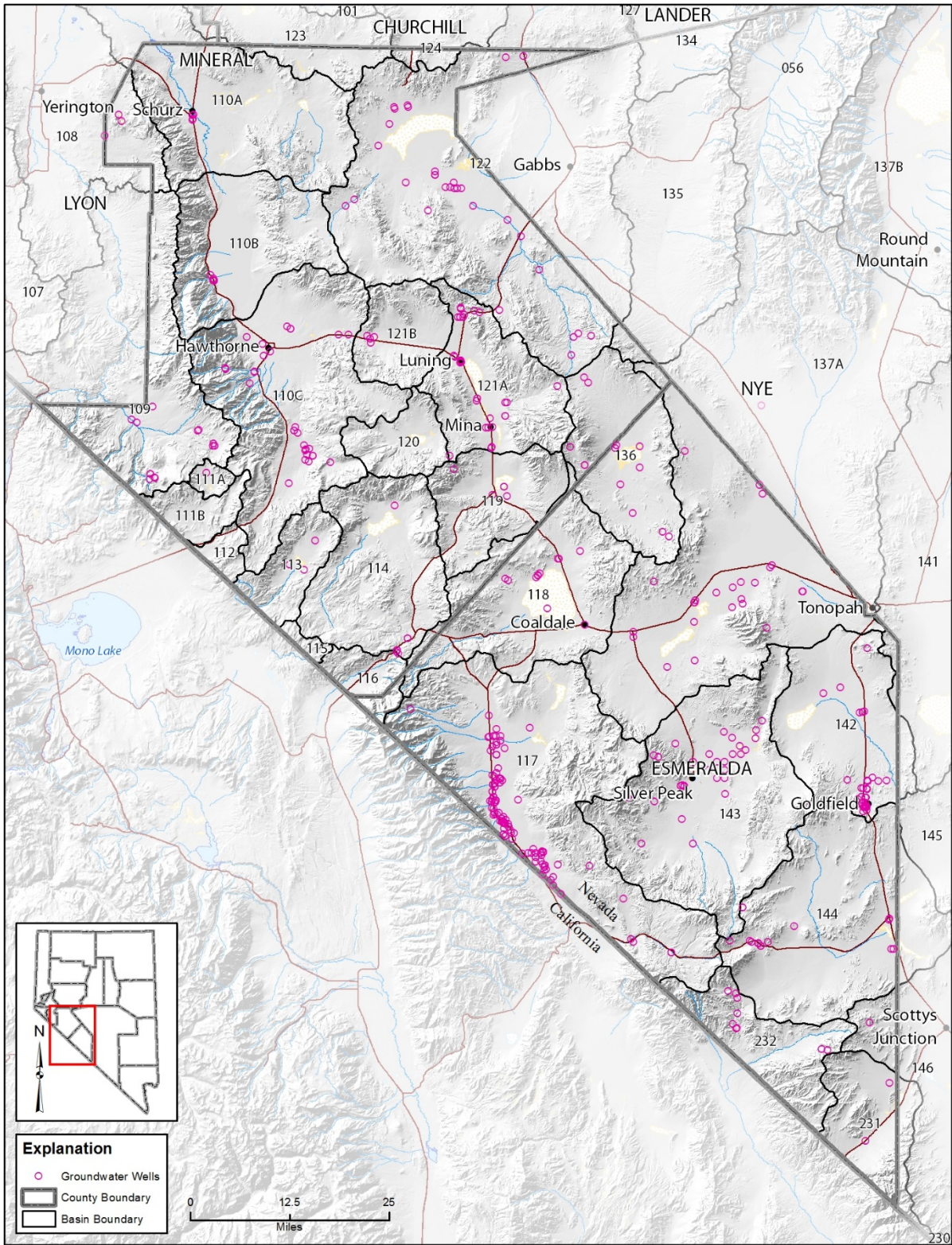


Figure 7. Groundwater wells in Esmeralda and Mineral Counties.



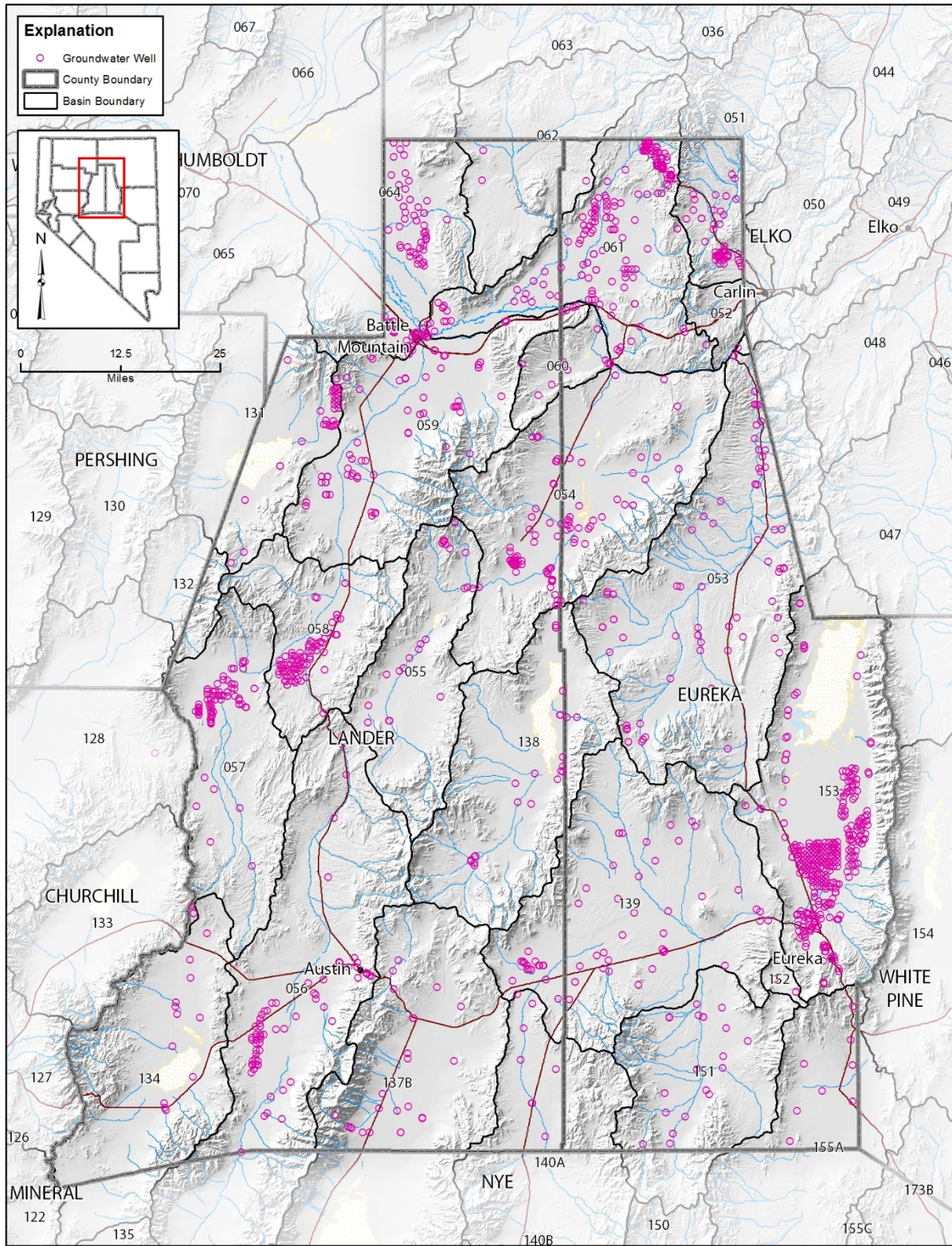


Figure 8. Groundwater wells in Eureka and Lander Counties.

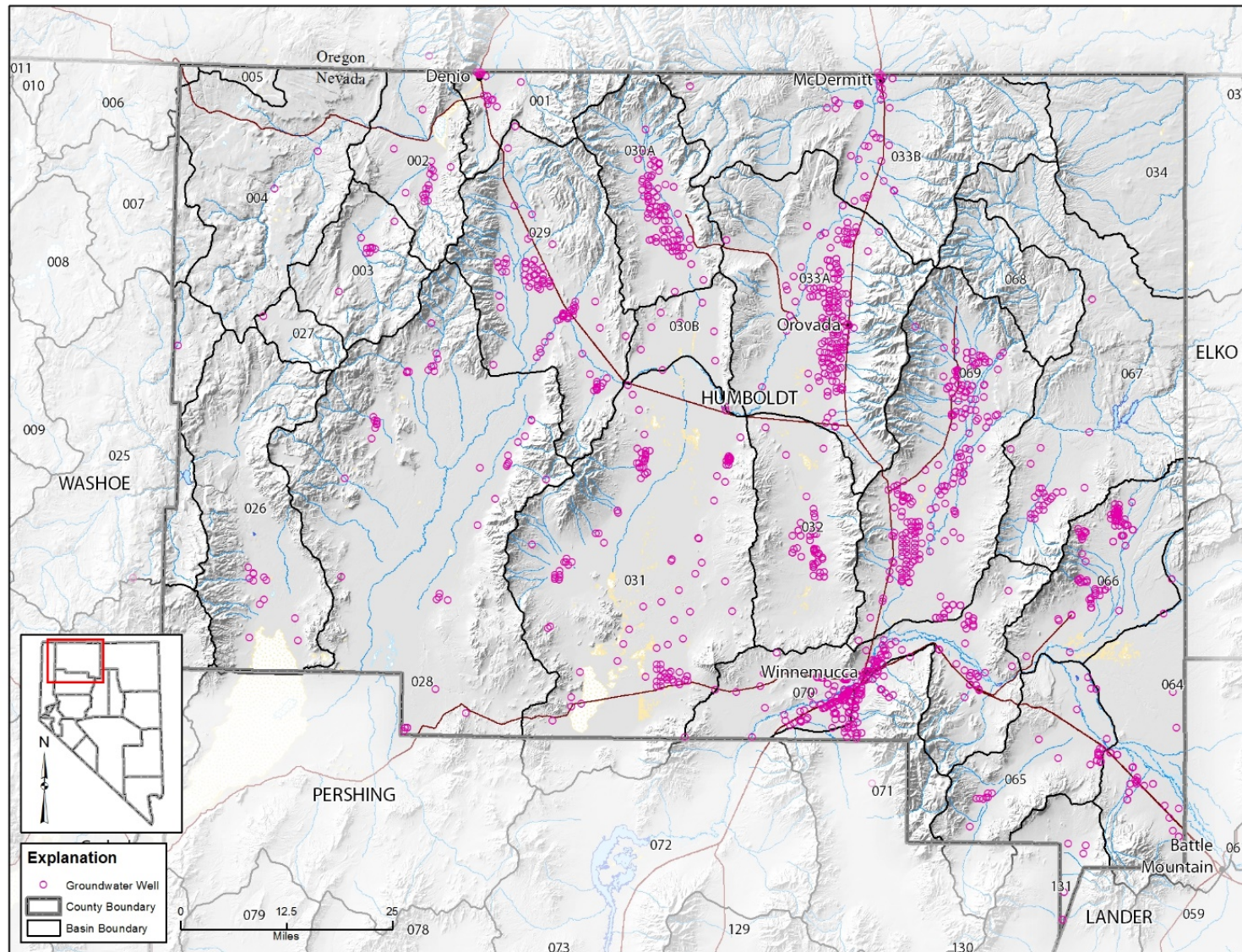


Figure 9. Groundwater wells in Humboldt County.

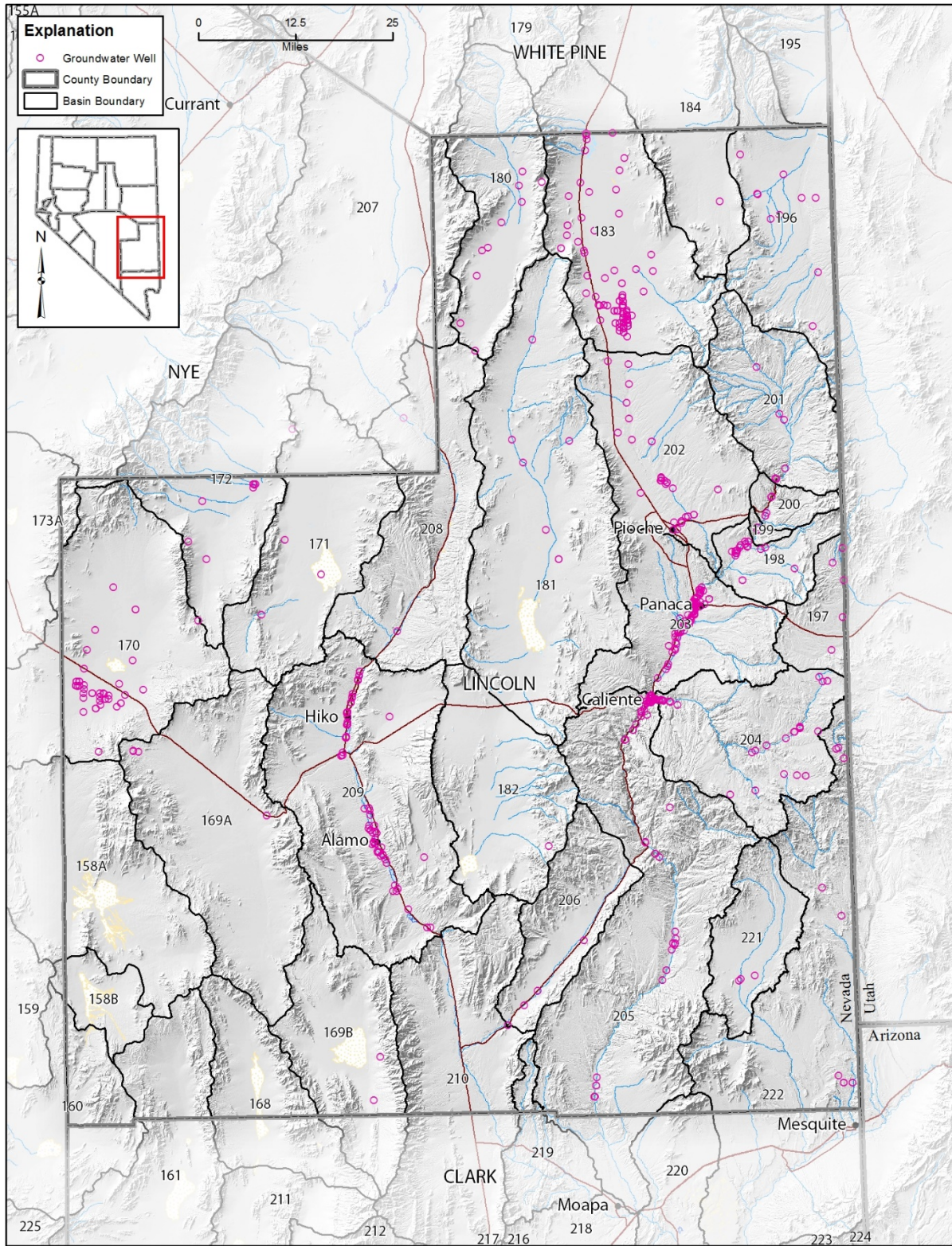


Figure 10. Groundwater wells in Lincoln County.

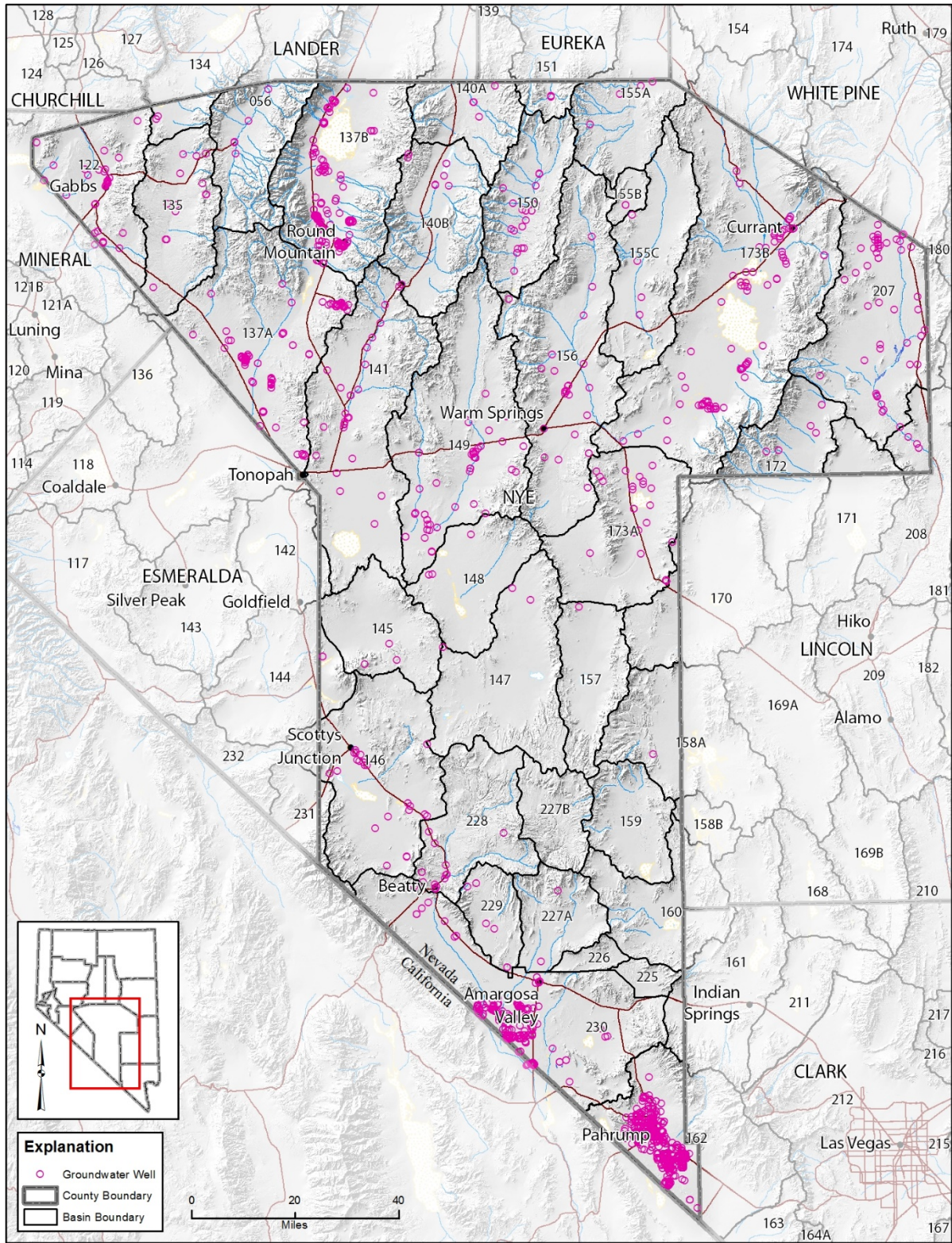


Figure 11. Groundwater wells in Nye County.

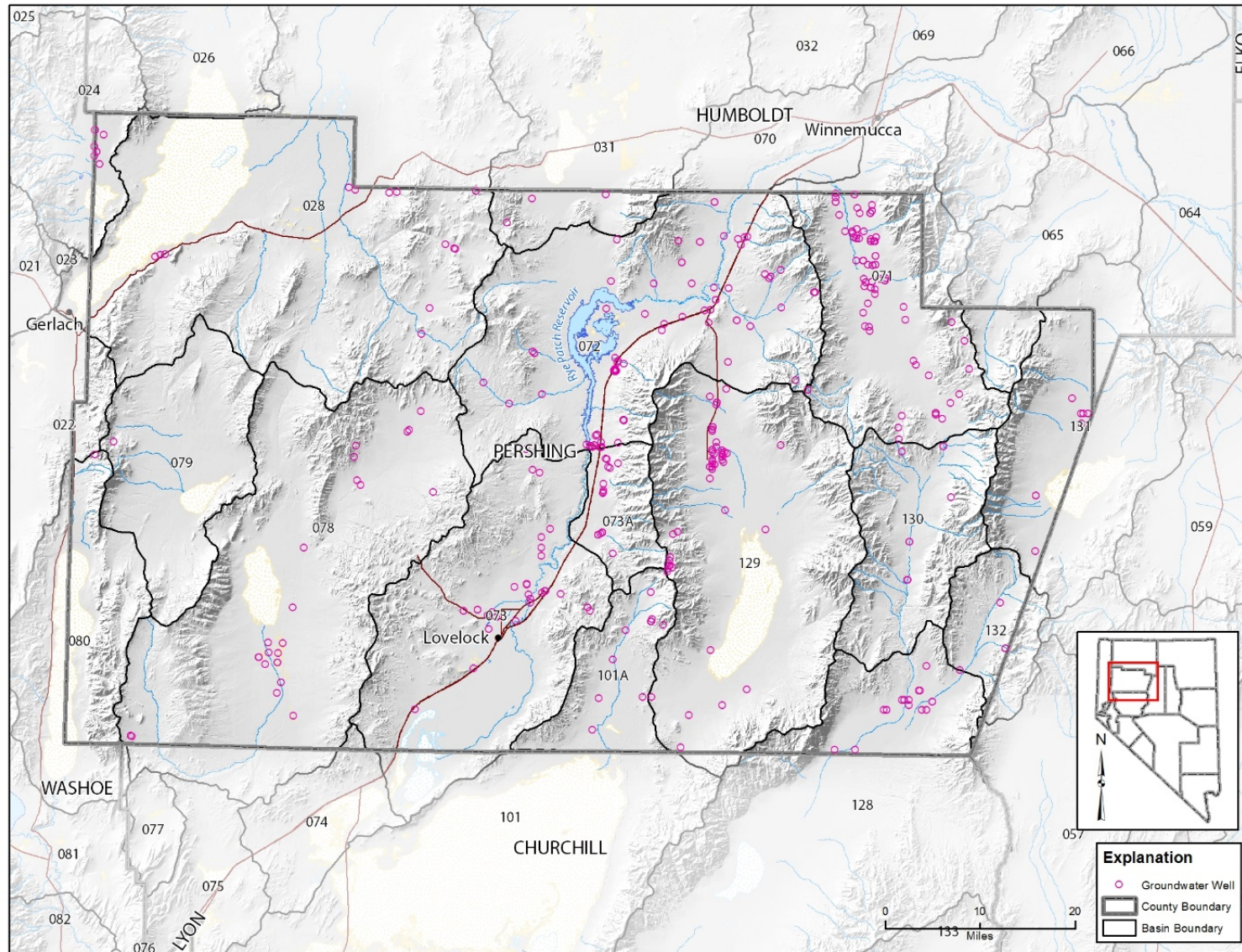


Figure 12. Groundwater wells in Pershing County.

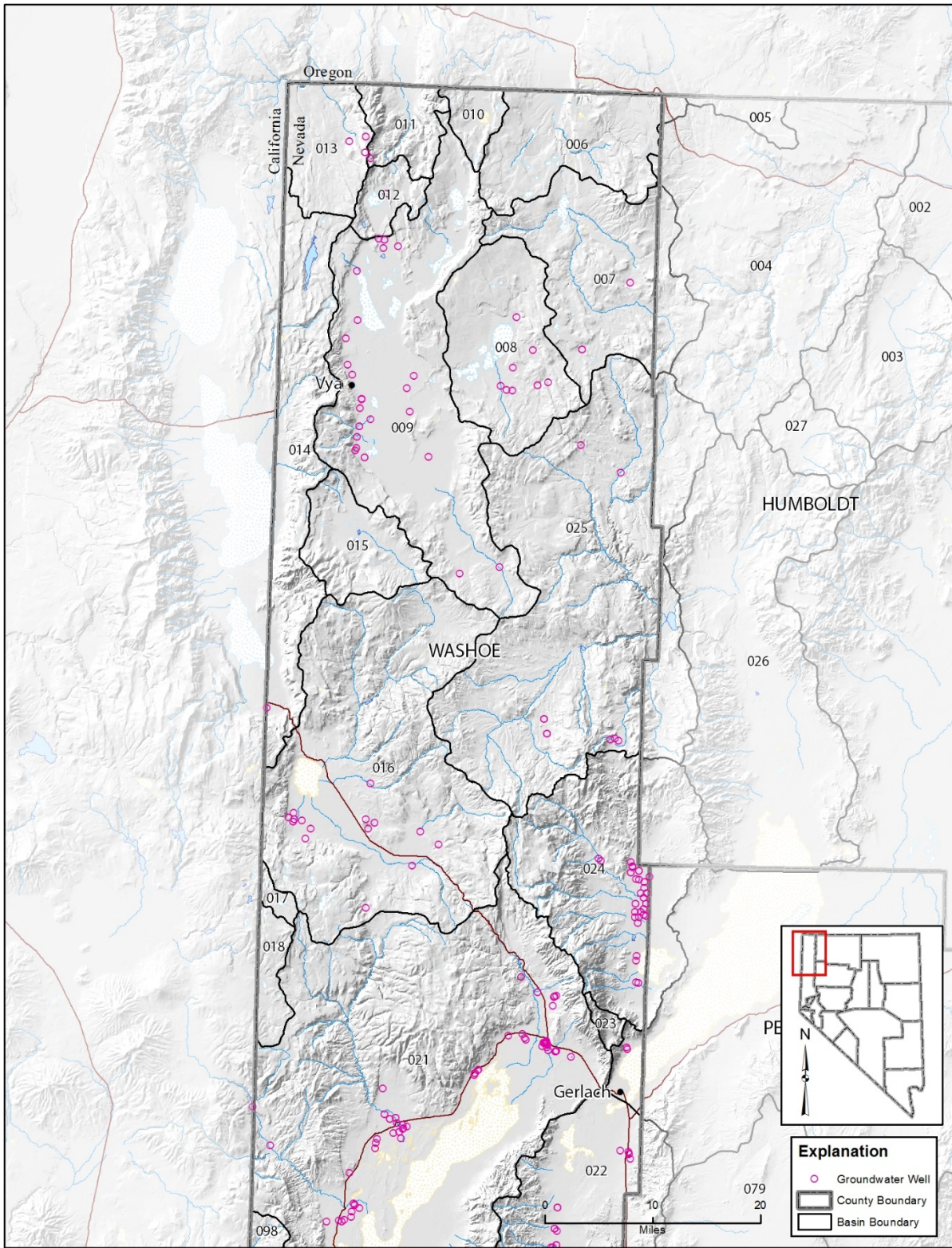


Figure 13. Groundwater wells in northern Washoe County.

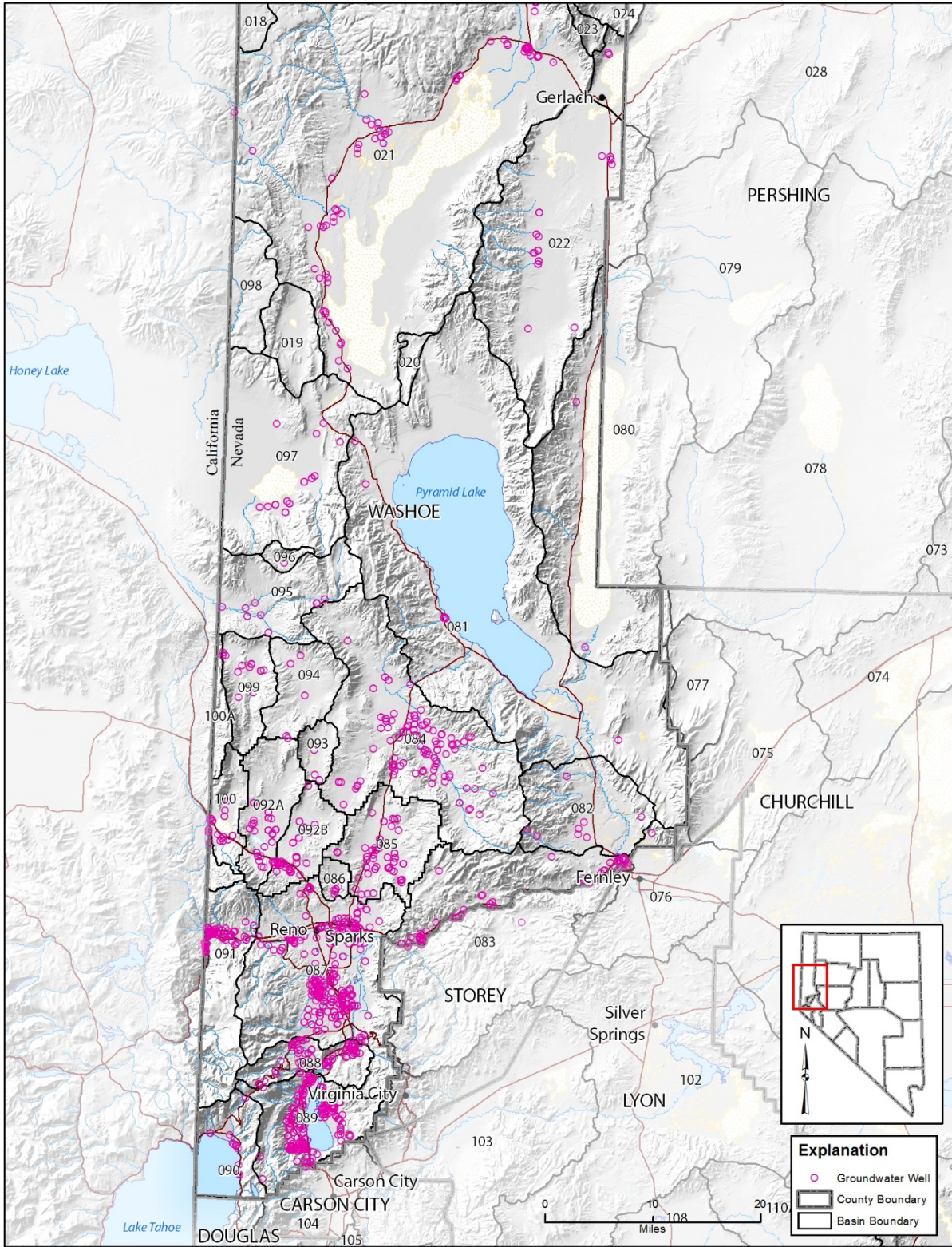


Figure 14. Groundwater wells in southern Washoe County.

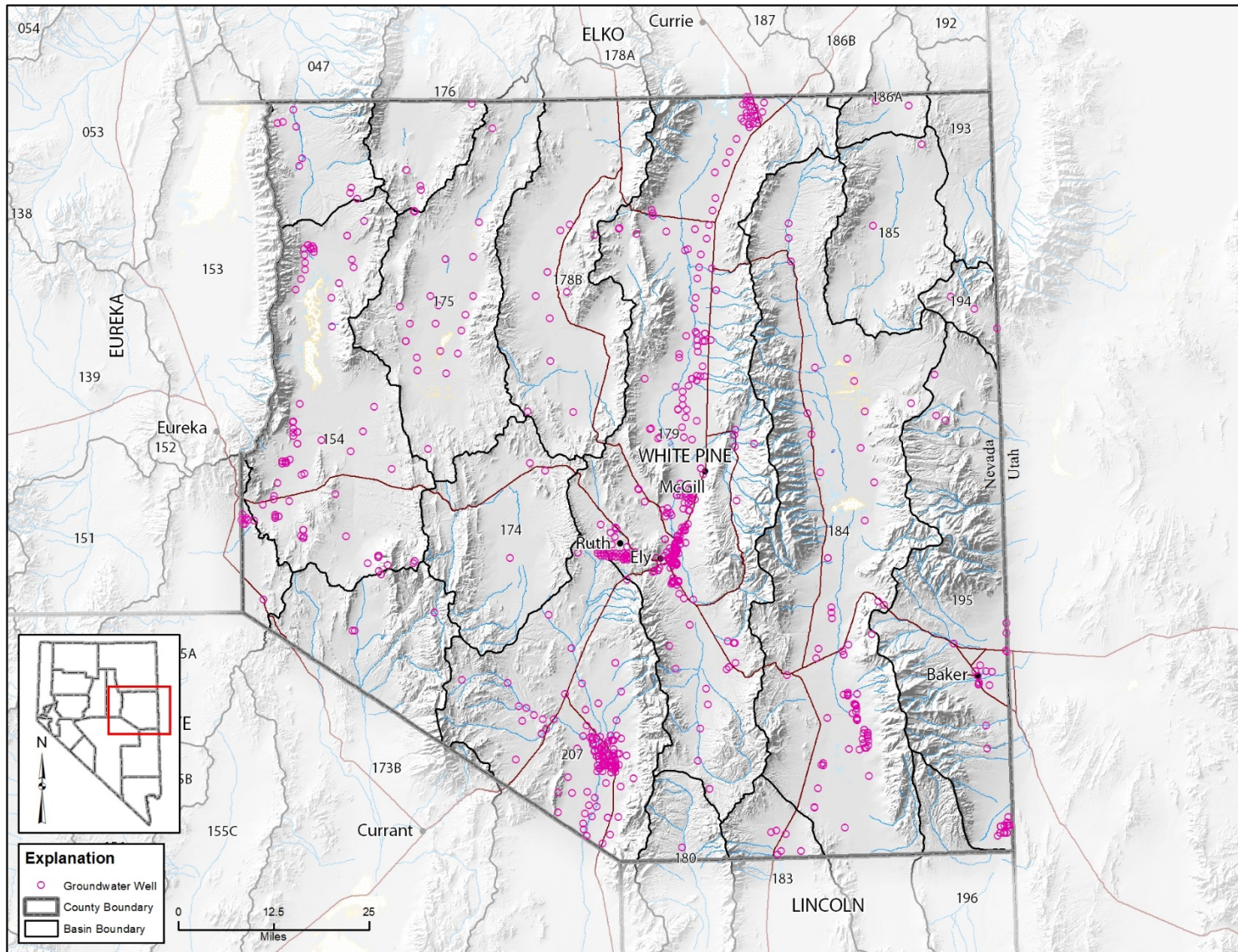


Figure 15. Groundwater wells in White Pine County.



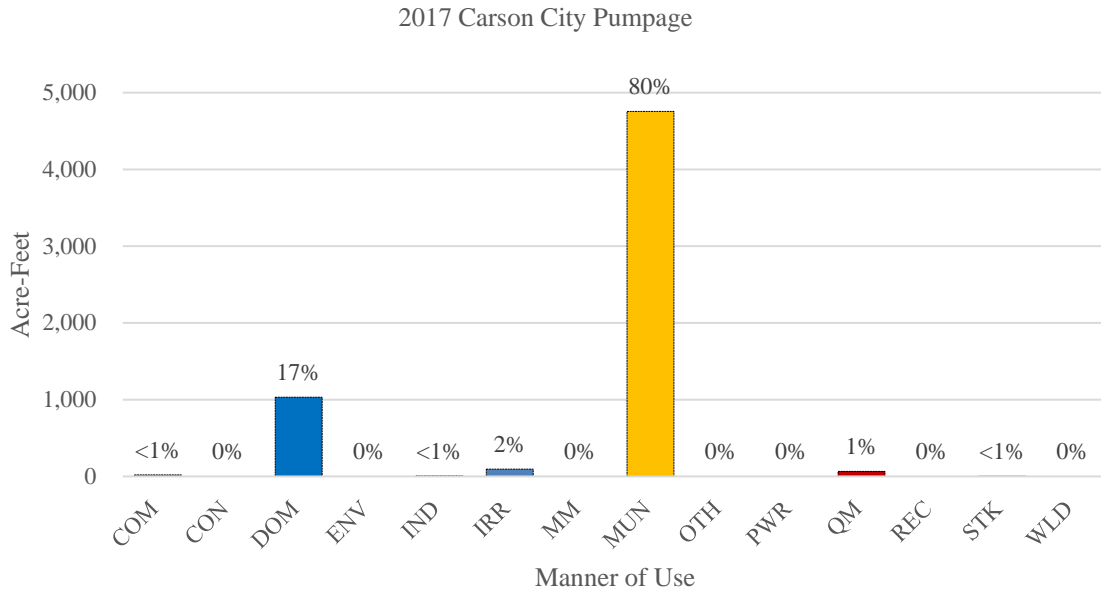


Figure 16. Carson City pumpage by manner of use.

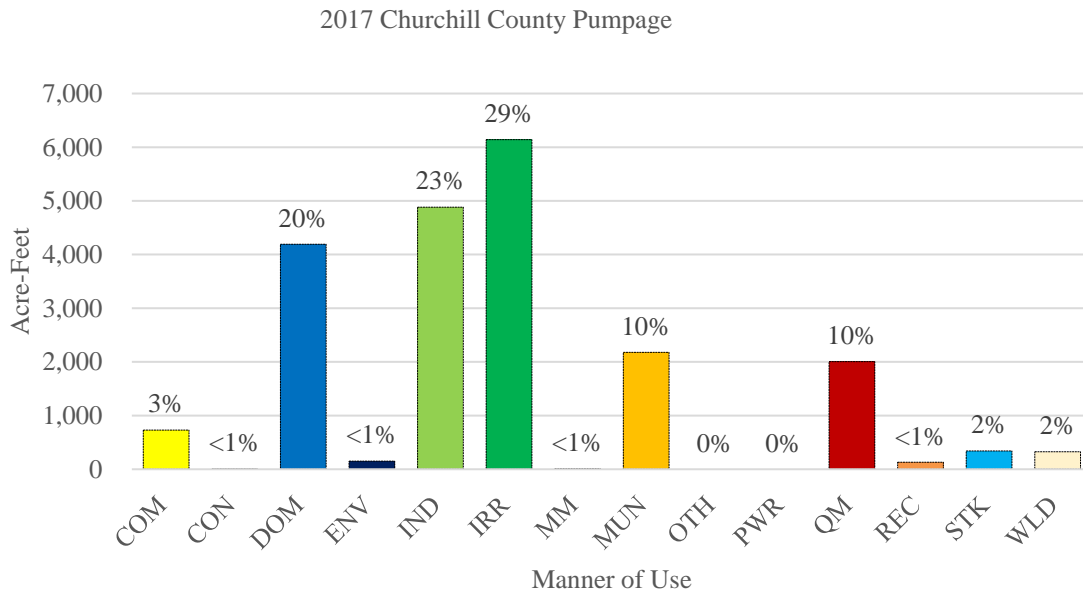


Figure 17. Churchill County pumpage by manner of use.

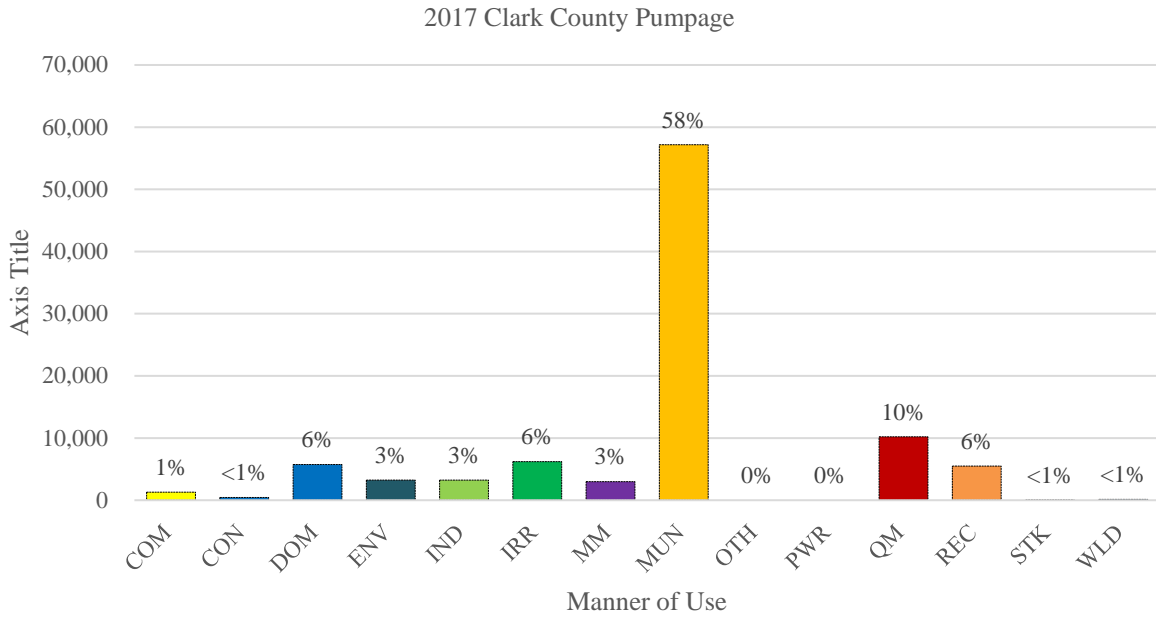


Figure 18. Clark County pumpage by manner of use.

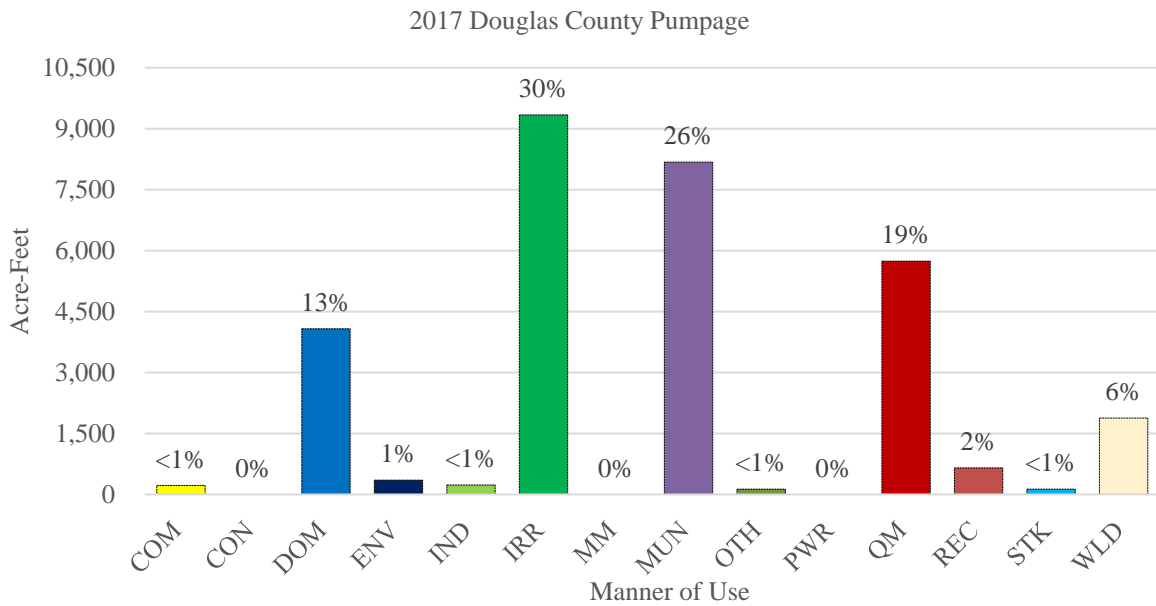


Figure 19. Douglas County pumpage by manner of use.

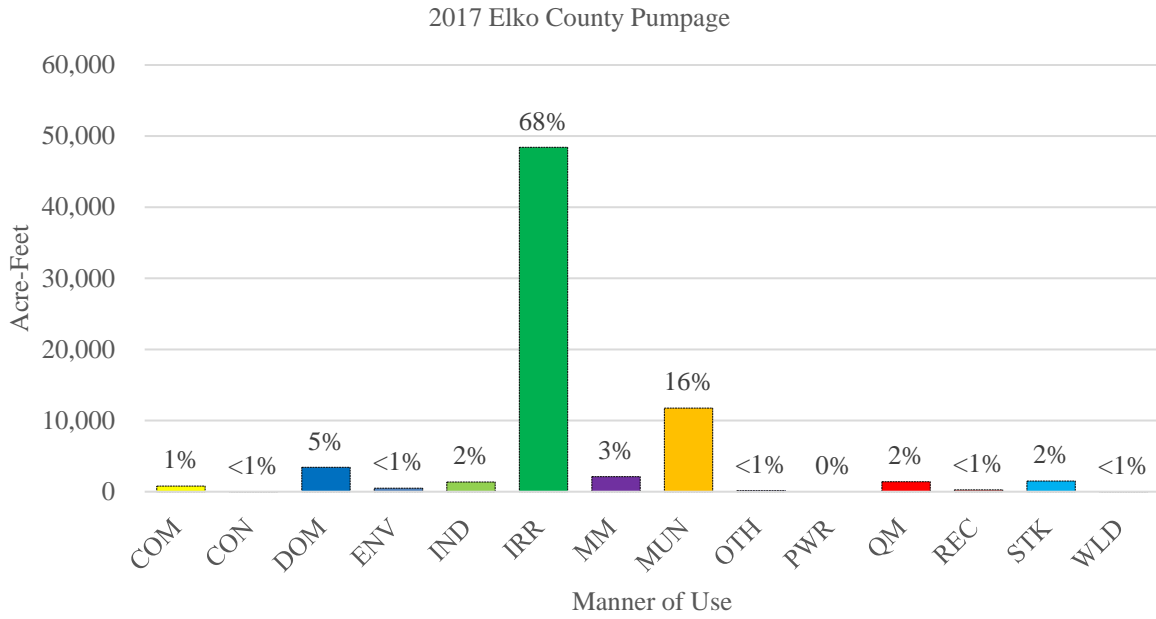


Figure 20. Elko County pumpage by manner of use.

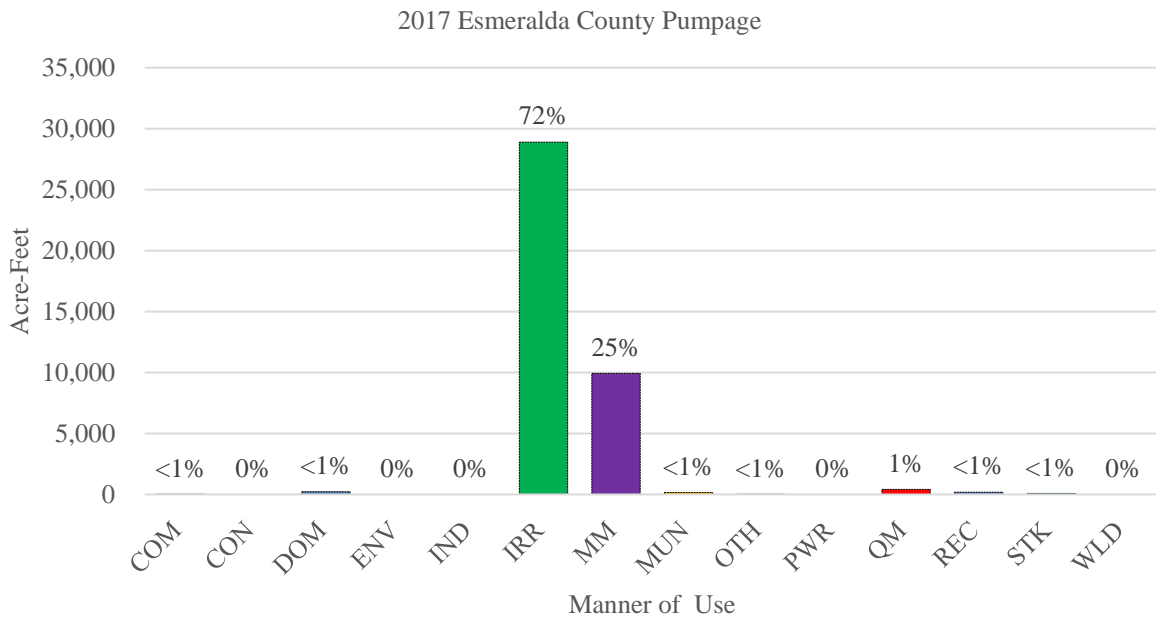


Figure 21. Esmeralda County pumpage by manner of use.

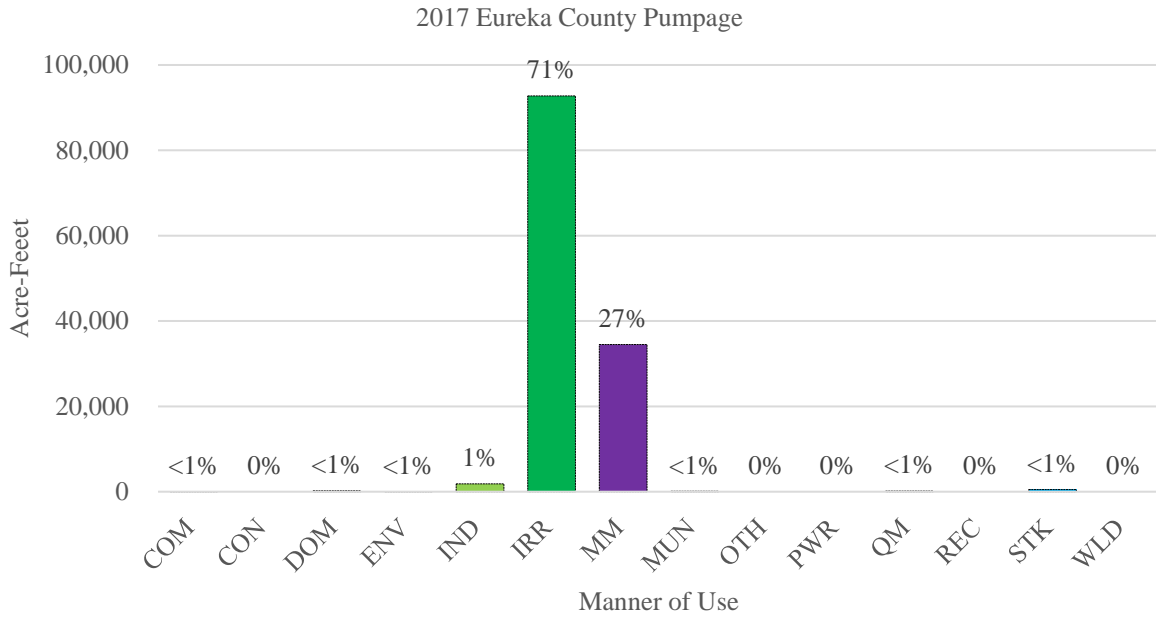


Figure 22. Eureka County pumpage by manner of use.

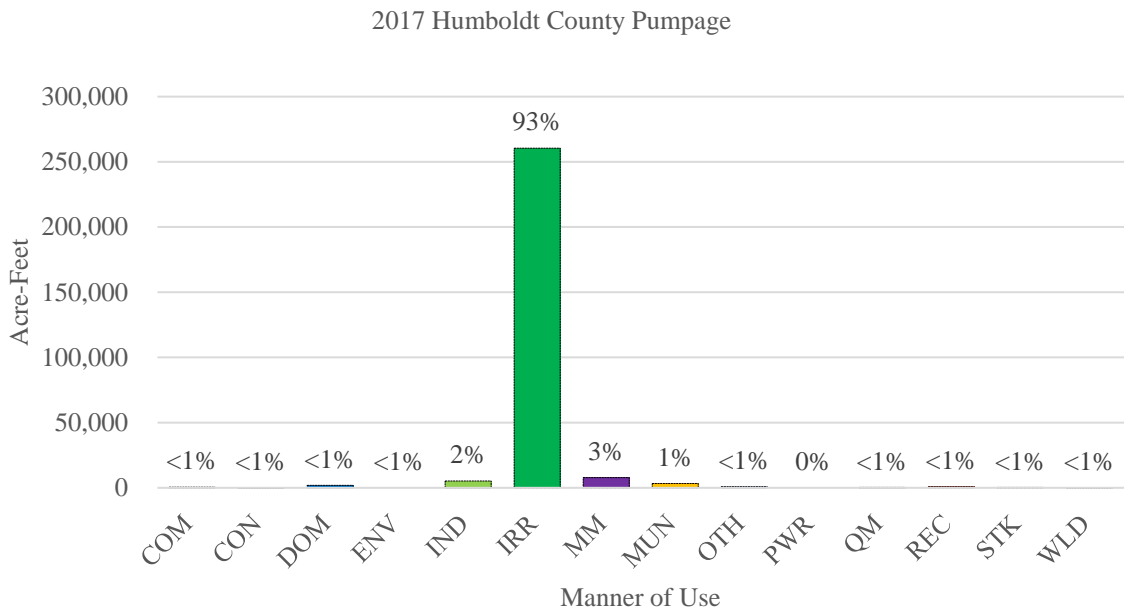


Figure 23. Humboldt County pumpage by manner of use.

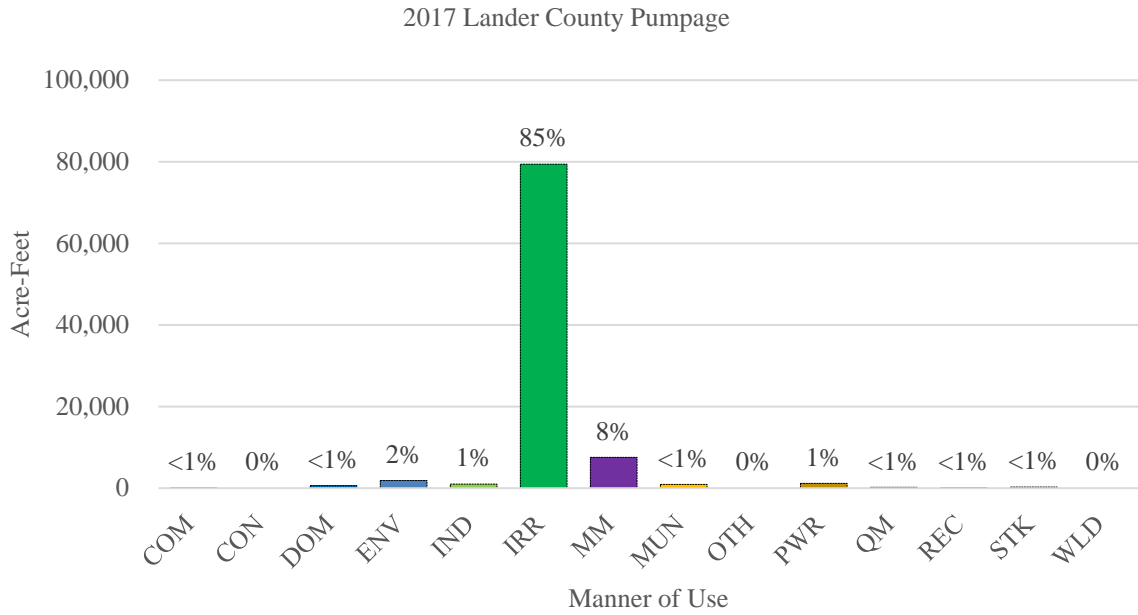


Figure 24. Lander County pumpage by manner of use.

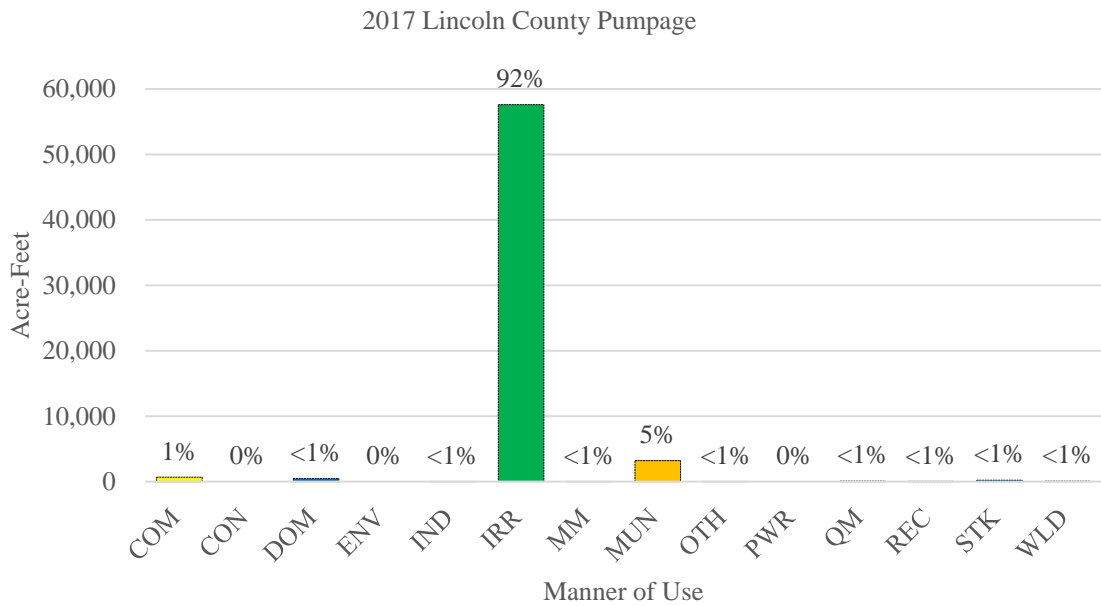


Figure 25. Lincoln County pumpage by manner of use.

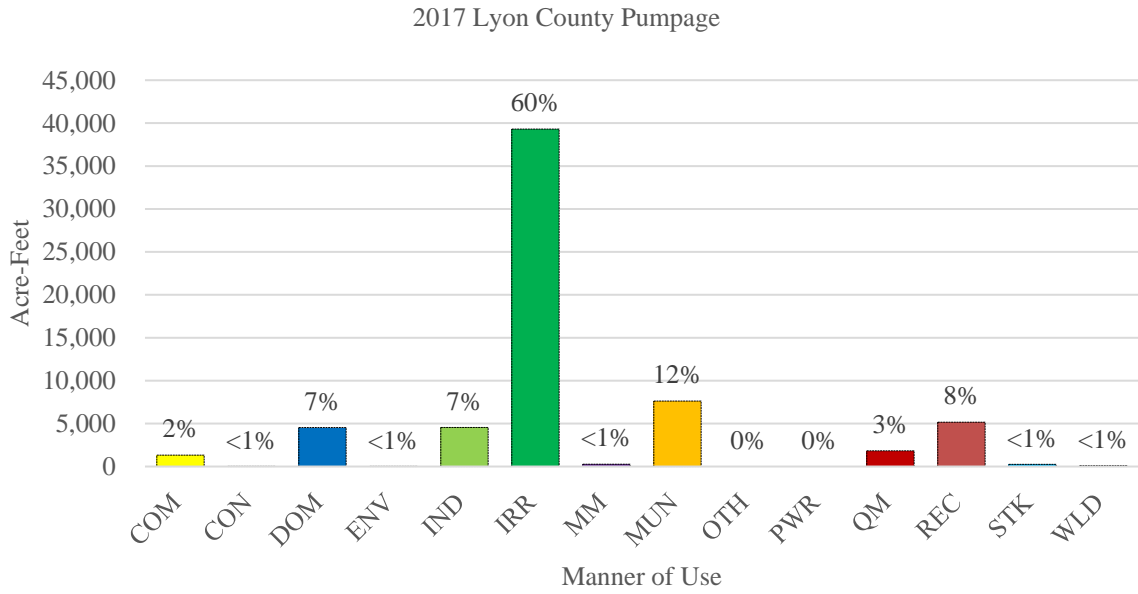


Figure 26. Lyon County pumpage by manner of use.

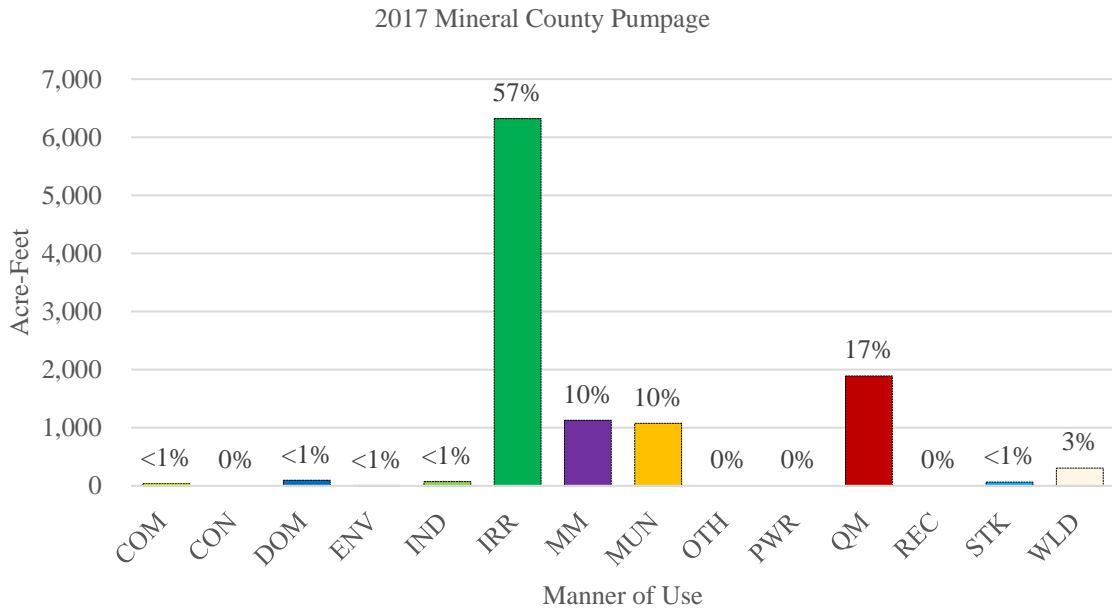


Figure 27. Mineral County pumpage by manner of use.

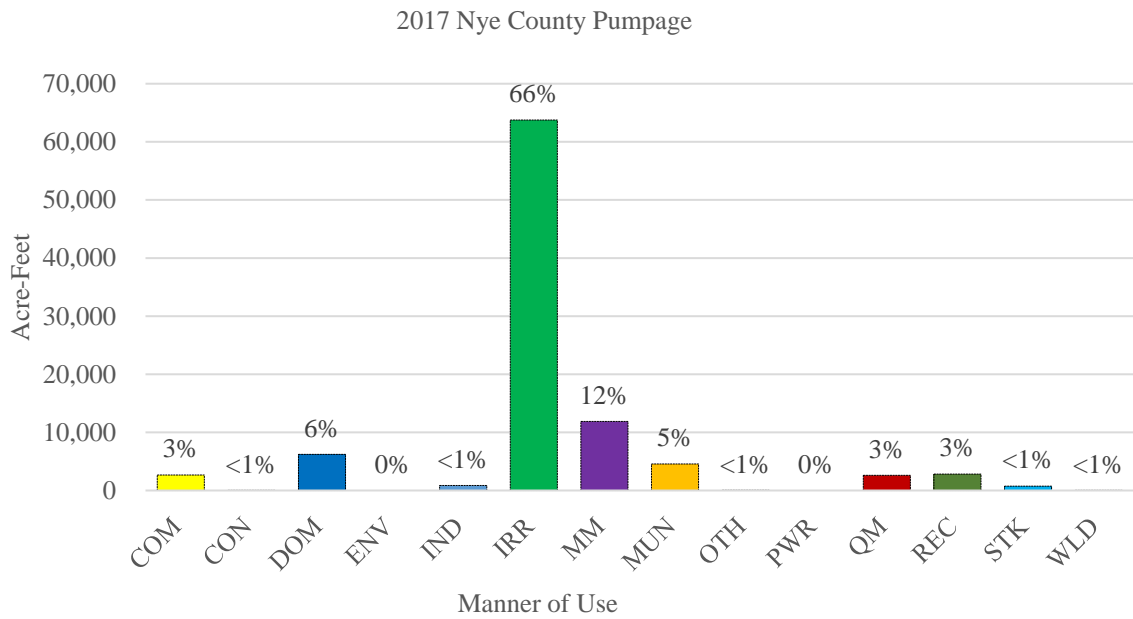


Figure 28. Nye County pumpage by manner of use.

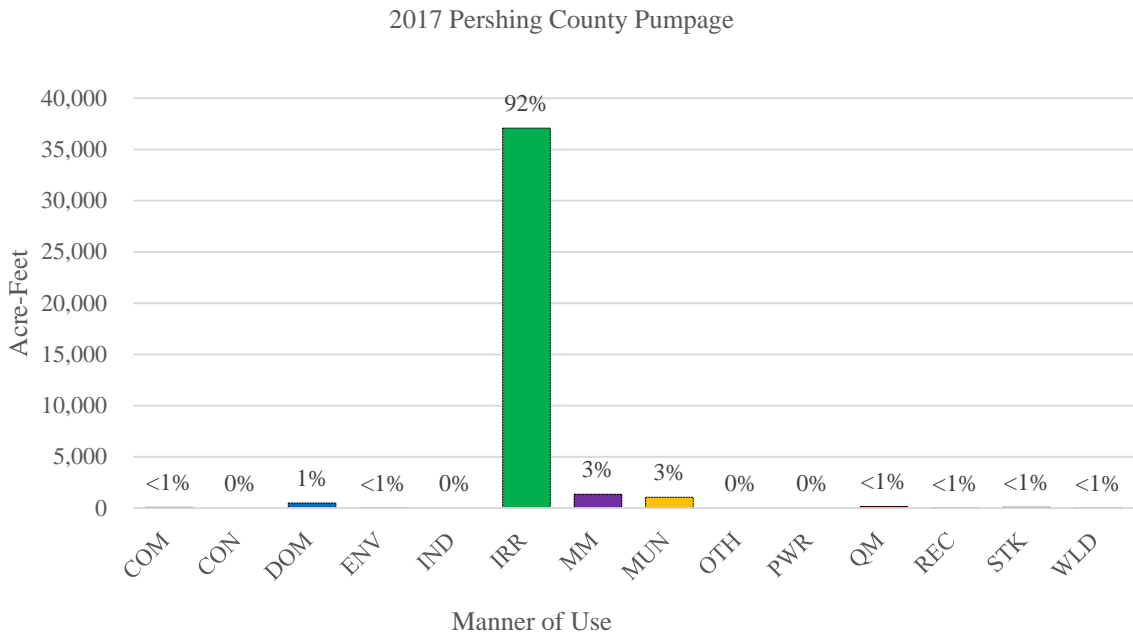


Figure 29. Pershing County pumpage by manner of use.

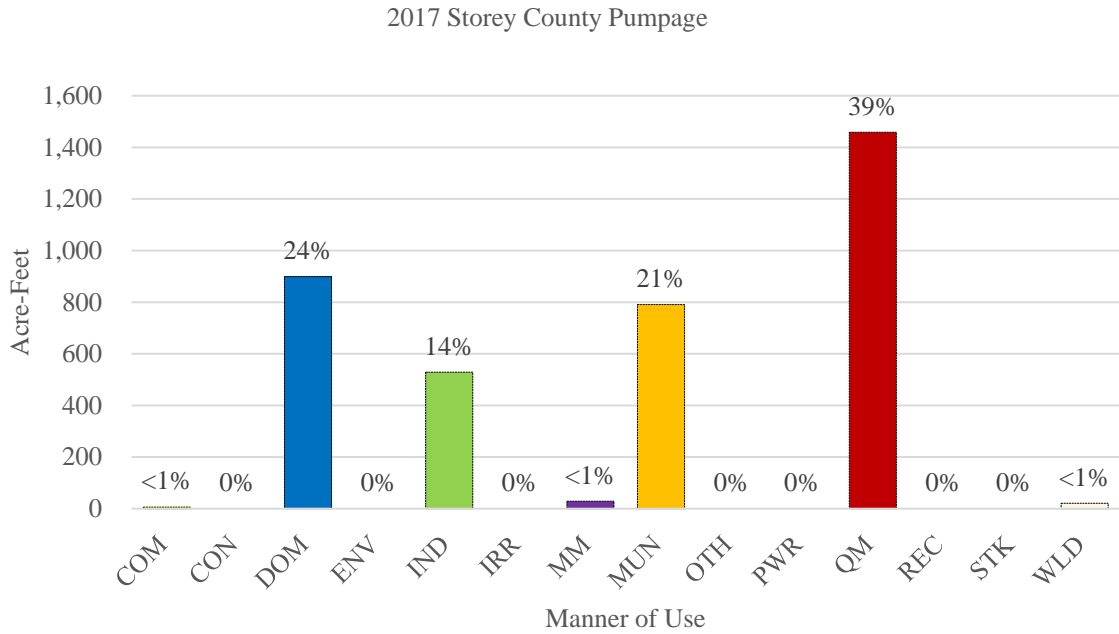


Figure 30. Storey County pumpage by manner of use.

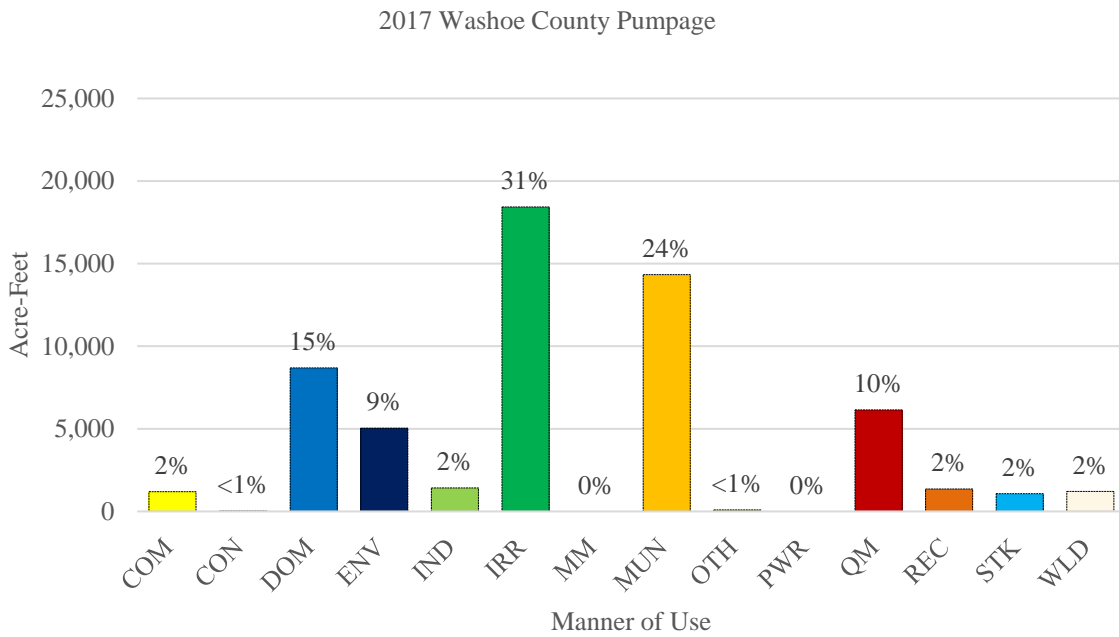


Figure 31. Washoe County pumpage by manner of use.



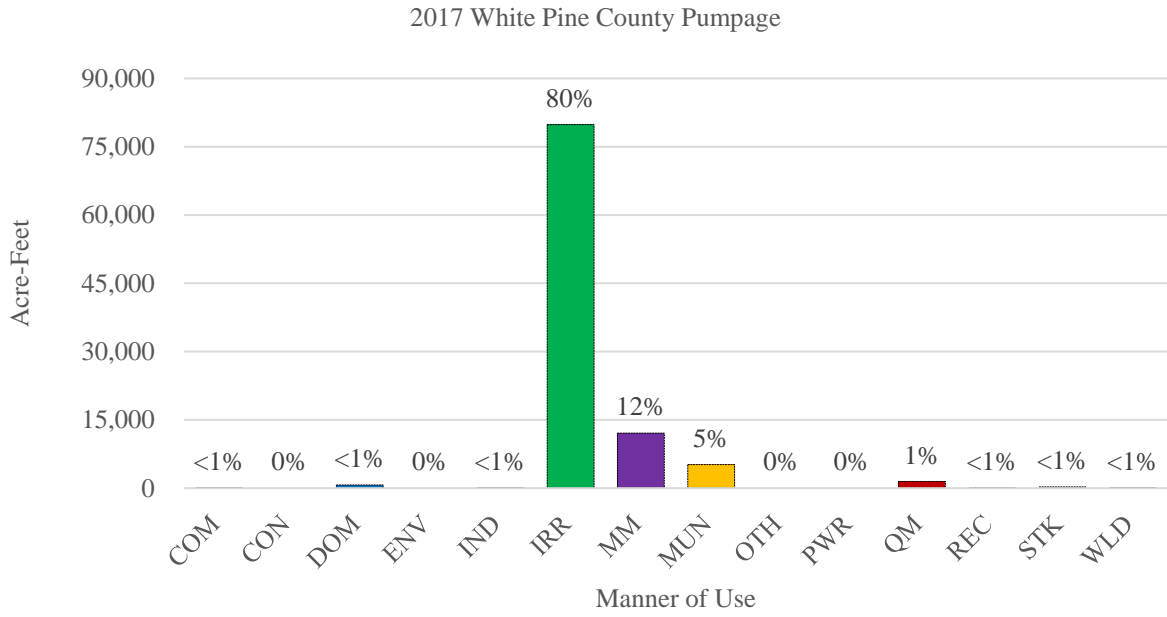


Figure 32. White Pine County pumpage by manner of use.

**APPENDIX A. GROUNDWATER PUMPAGE BY BASIN AND MANNER OF USE.**

## Explanation of Column Headings for Groundwater Pumpage by Basin and Manner of Use

Basin Number	Assigned administrative groundwater basin number
Sub	Identifier for a basin subarea
Basin Name	Assigned administrative groundwater basin name
County	Name of county in which the groundwater basin is located
Inventory Type	Inventory type, if 2017 crop (C) or pumpage (P) inventory was conducted; blank if no inventory was conducted

### Manner of Use

COM	Commercial
CON	Construction
DOM	Domestic
ENV	Environmental
IND	Industrial
IRR	Irrigation
MM	Mining and Milling
MUN	Municipal
OTH	Other
PWR	Power
QM	Quasi-Municipal
REC	Recreation
STK	Stock
WLD	Wildlife

Basin Number	Sub	Basin Name	County	Inventory Type	COM	CON	DOM	ENV	IND	IRR	MM	MUN	OTH	PWR	QM	REC	STK	WLD	Total
001		Pueblo Valley	Humboldt	C	5	0	20	0	0	4,551	0	0	0	0	4	0	3	0	4,583
002		Continental Lake Valley	Humboldt		0	0	2	0	0	1,759	0	0	0	0	0	0	19	0	1,780
003		Gridley Lake Valley	Humboldt		0	0	0	0	0	5,296	0	0	0	0	0	0	84	0	5,380
004		Virgin Valley	Humboldt		0	0	10	0	0	0	0	0	0	0	7	0	0	0	17
005		Sage Hen Valley	Humboldt		0	0	0	0	0	0	0	0	0	0	0	0	0	0	0
006		Guano Valley	Humboldt		0	0	0	0	0	0	0	0	0	0	0	0	0	0	0
006		Guano Valley	Washoe		0	0	0	0	0	0	0	0	0	0	0	0	0	0	0
007		Swan Lake Valley	Humboldt		0	0	0	0	0	0	0	0	0	0	0	0	0	0	0
007		Swan Lake Valley	Washoe		0	0	1	0	0	0	0	0	0	0	0	0	43	0	44
008		Massacre Lake Valley	Washoe		0	0	0	0	0	0	0	0	0	0	0	0	86	0	86
009		Long Valley	Washoe		0	0	6	0	0	155	0	0	0	0	0	0	136	0	297
010		Macy Flat	Washoe		0	0	0	0	0	0	0	0	0	0	0	0	4	0	4
011		Coleman Valley	Washoe		0	0	0	0	0	0	0	0	0	0	0	0	23	0	23
012		Mosquito Valley	Washoe		0	0	0	0	0	0	0	0	0	0	0	0	0	0	0
013		Warner Valley	Washoe		0	0	0	0	0	0	0	0	0	0	0	0	68	0	68
014		Surprise Valley	Washoe		0	0	0	0	0	460	0	0	0	0	0	0	36	0	496
015		Boulder Valley	Washoe		0	0	0	0	0	0	0	0	0	0	0	0	0	0	0
016		Duck Lake Valley	Washoe		69	0	2	0	0	1,665	0	0	0	0	0	0	63	0	1,798
017		Pilgrim Flat	Washoe		0	0	0	0	0	0	0	0	0	0	0	0	0	0	0
018		Painter Flat	Washoe		0	0	0	0	0	0	0	0	0	0	0	0	0	0	0
019		Dry Valley	Washoe		0	0	0	0	0	0	0	0	0	0	0	0	0	0	0
020		Sano Valley	Washoe		0	0	0	0	0	0	0	0	0	0	0	0	0	0	0
021		Smoke Creek Valley	Washoe		8	0	11	0	0	496	0	0	0	0	0	0	84	449	1,049
022		San Emidio Desert	Washoe		0	0	7	0	882	3,866	0	0	0	0	86	0	0	0	4,841
023		Granite Basin	Washoe		0	0	0	0	0	0	0	0	0	0	0	0	0	0	0
024		Hualapai Flat	Washoe	C	4	0	4	0	0	6,149	0	0	0	0	4	0	3	0	6,165
025		High Rock Lake Valley	Humboldt		0	0	0	0	0	0	0	0	0	0	0	0	1	0	1
025		High Rock Lake Valley	Washoe		0	0	2	0	0	0	0	0	0	0	0	0	2	0	4
026		Mud Meadow	Humboldt		0	0	0	0	0	1,105	0	0	0	0	0	0	0	0	1,105
027		Summit Lake Valley	Humboldt		0	0	1	0	0	0	0	0	0	0	0	0	1	0	2
028		Black Rock Desert	Humboldt		0	0	9	0	0	7,671	115	0	0	0	6	0	15	0	7,817
028		Black Rock Desert	Pershing		0	0	3	0	0	0	14	0	0	0	0	0	0	0	17
028		Black Rock Desert	Washoe		0	0	1	0	0	0	0	0	0	0	0	0	0	0	1
029		Pine Forest Valley	Humboldt	C	4	0	17	0	0	21,982	0	0	0	0	6	0	19	0	22,029
030	A	Kings River Valley - Rio King Subarea	Humboldt	C	112	0	19	0	0	46,368	0	0	94	0	1	0	26	0	46,620
030	B	Kings River Valley - Sod House Subarea	Humboldt		0	0	1	0	0	0	0	0	0	0	0	0	5	0	6
031		Desert Valley	Humboldt	C	2	0	14	0	2,313	22,128	7	0	65	0	0	772	13	0	25,314
031		Desert Valley	Pershing	C	0	0	1	0	0	0	0	0	0	0	0	0	2	0	3
032		Silver State Valley	Humboldt	C	0	0	17	0	0	17,022	0	0	0	0	2	0	18	0	17,059

Basin Number	Sub	Basin Name	County	Inventory Type	COM	CON	DOM	ENV	IND	IRR	MM	MUN	OTH	PWR	QM	REC	STK	WLD	Total
033	A	Quinn River Valley - Orovada Subarea	Humboldt	C	80	0	54	0	0	52,678	0	88	0	0	0	0	18	0	52,918
033	B	Quinn River Valley - McDermitt Subarea	Humboldt	C	0	0	40	0	0	3,148	0	62	0	0	47	0	20	0	3,317
034		Little Owyhee River Area	Elko		0	0	1	0	0	0	0	0	0	0	0	0	6	0	7
034		Little Owyhee River Area	Humboldt		0	0	2	0	0	0	0	0	0	0	0	0	0	0	2
035		South Fork Owyhee River	Elko		0	0	4	0	0	960	0	0	0	0	7	0	99	0	1,070
036		Independence Valley	Elko		0	0	19	0	1,219	2,662	133	18	0	0	2	0	20	0	4,074
037		Owyhee River Area	Elko		0	0	103	0	0	0	0	0	113	0	20	4	2	0	242
038		Bruneau River Area	Elko		0	0	2	0	0	0	0	0	0	0	0	0	3	0	5
039		Jarbidge River Area	Elko		0	0	1	0	0	0	0	0	0	0	0	0	0	0	1
040		Salmon Falls Creek Area	Elko		549	0	21	0	0	2,781	0	150	40	0	760	0	74	0	4,375
041		Goose Creek Area	Elko		0	0	1	0	0	642	0	0	0	0	0	0	53	0	696
042		Marys River Area	Elko		31	0	157	242	0	4,757	0	419	0	0	32	0	220	9	5,867
043		Starr Valley	Elko		0	0	59	0	0	223	0	0	0	0	0	0	77	0	359
044		North Fork Area	Elko		3	0	430	242	120	1,350	745	0	0	0	21	0	145	0	3,056
045		Lamoille Valley	Elko		9	0	355	0	0	617	0	0	0	0	71	0	50	0	1,102
046		South Fork Area	Elko		0	0	49	0	0	0	0	0	0	0	3	0	14	0	66
047		Huntington Valley	Elko		61	0	53	0	0	285	0	0	0	0	0	0	61	0	461
047		Huntington Valley	White Pine		0	0	0	0	0	0	161	0	0	0	0	0	0	0	161
048		Dixie Creek - Ten Mile Creek Area	Elko	C	19	3	530	0	0	344	349	2,234	12	0	5	255	60	0	3,811
049		Elko Segment	Elko	C	77	0	1,231	8	20	147	1	6,511	1	0	300	0	40	0	8,336
050		Susie Creek Area	Elko		0	0	21	0	2	117	0	0	0	0	33	0	60	0	233
051		Maggie Creek Area	Elko		0	0	12	0	0	5	0	0	0	0	0	0	61	0	78
051		Maggie Creek Area	Eureka		0	0	1	0	0	1,197	19,585	0	0	0	0	0	0	0	20,783
052		Marys Creek Area	Elko		0	0	14	0	0	0	0	430	0	0	0	0	3	0	447
052		Marys Creek Area	Eureka		0	0	4	0	0	0	0	0	0	0	0	0	0	0	4
053		Pine Valley	Elko		0	0	1	0	0	0	0	0	0	0	0	0	0	0	1
053		Pine Valley	Eureka		0	0	21	0	0	2,961	55	0	0	0	30	0	63	0	3,130
054		Crescent Valley	Eureka	C	0	0	68	0	0	187	0	1	0	0	69	0	79	0	404
054		Crescent Valley	Lander	C	0	0	18	411	0	6,717	3,131	0	0	0	66	0	35	0	10,378
055		Carico Lake Valley	Lander		0	0	4	0	0	1,025	273	0	0	0	0	0	24	0	1,326
056		Upper Reese River Valley	Lander	C	0	0	22	0	0	8,886	0	15	0	0	100	0	30	0	9,053
056		Upper Reese River Valley	Nye	C	0	0	42	0	0	334	0	0	0	0	2	0	3	0	380
057		Antelope Valley	Lander	C	0	0	8	0	0	17,613	0	0	0	0	5	0	22	0	17,648
058		Middle Reese River Valley	Lander	C	0	0	13	0	0	22,164	0	0	0	0	0	0	16	0	22,193
059		Lower Reese River Valley	Eureka	C	1	0	1	0	1	0	0	0	0	0	2	0	0	0	5
059		Lower Reese River Valley	Lander	C	0	0	342	0	6	7,970	1,081	751	0	0	4	0	33	0	10,187
060		Whirlwind Valley	Eureka		0	0	2	0	0	0	0	0	0	0	0	0	3	0	5
060		Whirlwind Valley	Lander		0	0	1	0	89	0	0	0	0	1,177	0	0	1	0	1,268
061		Boulder Flat	Elko		0	0	0	0	0	0	0	0	0	0	0	0	1	0	1

Basin Number	Sub	Basin Name	County	Inventory Type	COM	CON	DOM	ENV	IND	IRR	MM	MUN	OTH	PWR	QM	REC	STK	WLD	Total
061		Boulder Flat	Eureka		9	0	10	12	1,836	14,730	14,568	0	0	0	11	0	90	0	31,267
061		Boulder Flat	Lander		0	0	5	0	4	1,160	0	0	0	0	0	0	52	0	1,220
062		Rock Creek Valley	Elko		0	0	1	10	0	0	515	0	0	0	0	0	5	0	532
062		Rock Creek Valley	Lander		0	0	1	0	0	0	0	0	0	0	0	0	0	0	1
063		Willow Creek Valley	Elko		0	0	5	0	0	177	321	0	0	0	28	0	5	0	536
064		Clovers Area	Elko	C	0	0	1	0	0	0	0	0	0	0	0	0	0	0	1
064		Clovers Area	Humboldt	C	0	0	18	0	856	130	1,152	0	0	0	15	0	28	0	2,200
064		Clovers Area	Lander	C	0	0	148	89	898	5,933	266	158	0	0	0	49	1	0	7,542
065		Pumpnickel Valley	Humboldt	C	0	0	4	0	0	1,449	226	0	0	0	0	0	1	0	1,681
065		Pumpnickel Valley	Pershing	C	0	0	0	0	0	0	0	0	0	0	0	0	0	0	0
066		Kelley Creek Area	Humboldt	C	0	0	7	0	18	4,780	6,309	0	0	0	0	0	0	0	11,115
067		Little Humboldt Valley	Elko	C	0	0	1	0	0	0	0	0	0	0	0	0	0	0	1
067		Little Humboldt Valley	Humboldt	C	0	0	1	0	0	5,971	0	0	0	0	0	0	1	0	5,973
068		Hardscrabble Area	Humboldt		0	0	0	0	0	0	0	0	0	0	0	0	0	0	0
069		Paradise Valley	Humboldt	C	53	0	399	0	8	43,334	0	0	14	0	9	3	6	0	43,826
070		Winnemucca Segment	Humboldt	C	184	5	718	0	2,016	16,944	0	691	724	0	211	45	1	45	21,585
071		Grass Valley	Humboldt	C	26	0	533	0	20	4,140	0	2,457	2	0	3	0	0	0	7,180
071		Grass Valley	Pershing	C	0	0	224	0	0	13,579	0	0	0	0	51	0	1	0	13,855
072		Imlay Area	Pershing		5	0	85	10	0	1,367	773	0	0	0	4	0	1	0	2,245
073		Lovelock Valley	Churchill		0	0	1	0	0	0	0	0	0	0	0	0	0	0	1
073		Lovelock Valley	Pershing		56	0	58	0	0	157	58	1	0	0	0	2	10	0	341
073	A	Lovelock Valley - Oreana Subarea	Pershing		8	0	75	0	0	0	0	1,058	0	0	97	3	0	0	1,240
074		White Plains	Churchill		4	0	4	0	0	0	0	0	0	0	8	0	0	0	16
075		Brady Hot Springs	Churchill		0	0	2	0	21	0	8	0	0	0	0	0	2	0	33
075		Brady Hot Springs	Lyon		0	0	1	0	0	0	0	0	0	0	0	0	0	0	1
076		Fernley Area	Churchill		0	0	10	0	0	0	0	0	0	0	0	0	0	0	10
076		Fernley Area	Lyon		25	0	486	0	1,210	365	13	3,846	0	0	0	0	3	0	5,947
076		Fernley Area	Washoe		0	0	14	0	0	0	0	0	0	0	0	0	0	0	14
077		Fireball Valley	Churchill		0	0	0	0	0	0	0	0	0	0	0	0	0	0	0
078		Granite Springs Valley	Churchill		0	0	3	0	0	0	0	0	0	0	0	0	0	0	3
078		Granite Springs Valley	Pershing		0	0	2	0	0	5,341	0	0	0	0	0	0	11	7	5,361
079		Kumiva Valley	Pershing		0	0	0	0	0	0	0	0	0	0	0	0	0	0	0
080		Winnemucca Lake Valley	Pershing		0	0	0	0	0	0	2	0	0	0	0	0	0	0	2
080		Winnemucca Lake Valley	Washoe		0	0	4	0	0	0	0	0	0	0	0	0	0	0	4
081		Pyramid Lake Valley	Churchill		0	0	0	0	0	0	0	0	0	0	0	0	0	0	0
081		Pyramid Lake Valley	Lyon		0	0	1	0	0	0	0	0	0	0	0	0	0	0	1
081		Pyramid Lake Valley	Washoe		15	0	47	0	0	0	0	0	0	0	9	0	2	0	73
082		Dodge Flat	Washoe		453	0	23	0	0	0	0	0	0	0	87	0	5	0	568
083		Tracy Segment	Lyon		0	0	14	0	0	0	0	0	0	0	0	0	0	0	14

Basin Number	Sub	Basin Name	County	Inventory Type	COM	CON	DOM	ENV	IND	IRR	MM	MUN	OTH	PWR	QM	REC	STK	WLD	Total
083		Tracy Segment	Storey		6	0	627	0	529	0	5	791	0	0	1,456	0	0	0	3,414
083		Tracy Segment	Washoe		111	0	89	0	517	0	0	0	0	0	1,084	0	3	0	1,804
084		Warm Springs Area	Washoe	P	5	0	656	556	0	2,267	0	0	0	0	58	9	31	0	3,582
085		Spanish Springs Valley	Washoe		171	22	392	0	0	0	0	1,098	0	0	573	609	3	0	2,869
086		Sun Valley	Washoe		0	0	231	1	0	14	0	0	0	0	0	0	0	0	246
087		Truckee Meadows	Storey	P	0	0	39	0	0	0	0	0	0	0	0	0	0	0	39
087		Truckee Meadows	Washoe	P	191	0	1,710	3,867	19	130	0	8,330	5	0	1,428	128	1	1	15,810
088		Pleasant Valley	Washoe	P	15	0	720	0	0	44	0	331	73	0	454	26	0	0	1,663
089		Washoe Valley	Washoe	P	17	0	1,555	0	0	1,899	0	1,236	2	0	51	550	431	760	6,501
090		Lake Tahoe Basin	Carson City	P	0	0	1	0	0	73	0	0	0	0	1	0	0	0	75
090		Lake Tahoe Basin	Douglas	P	96	0	26	158	0	1,541	0	1,879	0	0	1,381	440	0	0	5,520
090		Lake Tahoe Basin	Washoe	P	0	0	11	577	0	4	0	2,624	0	0	10	6	0	0	3,233
091		Truckee Canyon Segment	Washoe		104	0	462	32	0	68	0	552	1	0	574	3	32	0	1,827
092	A	Lemmon Valley - Western Part	Washoe	P	1	0	632	0	3	4	0	0	0	0	294	16	0	0	951
092	B	Lemmon Valley - Eastern Part	Washoe	P	15	0	1,228	0	1	2	0	22	0	0	49	11	0	0	1,328
093		Antelope Valley	Washoe		0	0	201	0	0	0	0	0	0	0	53	0	1	0	255
094		Bedell Flat	Washoe		9	0	75	0	0	0	0	0	0	0	0	0	6	0	90
095		Dry Valley	Washoe		0	0	10	0	0	0	0	0	0	0	0	0	0	0	10
096		Newcomb Lake Valley	Washoe		0	0	0	0	0	0	0	0	0	0	0	0	0	0	0
097		Honey Lake Valley	Washoe		0	0	34	0	0	862	0	4	0	0	21	0	11	0	932
098		Skedaddle Creek Valley	Washoe		0	0	0	0	0	0	0	0	0	0	0	0	0	0	0
099		Red Rock Valley	Washoe		5	0	386	0	0	182	0	137	10	0	0	0	1	0	721
100		Cold Springs Valley	Washoe		1	0	170	9	0	164	0	0	0	0	1,029	0	0	0	1,373
100	A	Cold Springs Valley - Long Valley	Washoe		0	0	6	0	0	0	0	0	0	0	284	0	0	0	290
101		Carson Desert	Churchill		714	1	4,115	151	1,034	3,703	1	2,178	0	0	1,775	131	219	64	14,085
101		Carson Desert	Lyon		0	0	1	0	0	0	0	0	0	0	0	0	0	0	1
101	A	Carson Desert	Pershing		0	0	5	0	0	0	10	0	0	0	0	0	1	0	16
102		Churchill Valley	Churchill	P	0	0	28	0	0	0	0	0	0	0	0	0	0	0	28
102		Churchill Valley	Douglas	P	0	0	2	0	0	0	0	0	0	0	0	0	0	0	2
102		Churchill Valley	Lyon	P	10	0	1,322	0	1	66	0	0	0	0	576	14	1	0	1,990
102		Churchill Valley	Storey	P	0	0	0	0	0	0	0	0	0	0	0	0	0	0	0
103		Dayton Valley	Carson City	P	1	0	179	0	6	0	0	1,132	0	0	0	0	1	0	1,318
103		Dayton Valley	Lyon	P	124	1	1,094	0	258	1,213	11	1,898	0	0	960	0	0	0	5,560
103		Dayton Valley	Storey	P	0	0	233	0	0	0	24	0	0	0	2	0	0	21	280
104		Eagle Valley	Carson City	P	20	0	762	0	1	21	0	3,240	0	0	65	0	1	0	4,109
104		Eagle Valley	Douglas	P	1	0	100	0	0	0	0	0	0	0	46	0	0	0	148
104		Eagle Valley	Washoe	P	0	0	0	0	0	0	0	0	0	0	0	0	0	0	0
105		Carson Valley	Carson City	P	0	0	90	0	0	0	0	384	0	0	0	0	0	0	474
105		Carson Valley	Douglas	P	75	0	3,607	193	232	6,140	0	6,298	130	0	4,075	210	113	1,879	22,951

Basin Number	Sub	Basin Name	County	Inventory Type	COM	CON	DOM	ENV	IND	IRR	MM	MUN	OTH	PWR	QM	REC	STK	WLD	Total
106		Antelope Valley	Douglas	P	48	0	341	0	0	1,658	0	0	0	0	239	3	0	0	2,290
106		Antelope Valley	Lyon	P	0	0	1	0	0	0	0	0	0	0	0	0	0	0	1
107		Smith Valley	Douglas	P	0	0	0	0	0	0	0	0	0	0	0	0	17	0	17
107		Smith Valley	Lyon	P	605	0	807	0	65	12,482	0	0	0	0	92	57	159	0	14,267
108		Mason Valley	Lyon	P	561	0	789	0	3,016	18,441	245	1,882	0	0	203	5,091	79	109	30,414
109		East Walker Area	Lyon		0	0	26	0	0	6,739	0	0	0	0	0	0	11	0	6,776
109		East Walker Area	Mineral		0	0	3	0	0	221	56	0	0	0	0	0	6	0	286
110	A	Walker Lake Valley - Schurz Subarea	Churchill		0	0	0	0	0	0	0	0	0	0	0	0	0	0	0
110	A	Walker Lake Valley - Schurz Subarea	Lyon		0	0	0	0	0	0	0	0	0	0	0	0	1	0	1
110	A	Walker Lake Valley - Schurz Subarea	Mineral		4	0	53	0	0	0	0	0	0	0	3	0	0	0	60
110	B	Walker Lake Valley - Walker Subarea	Mineral		24	0	6	0	0	0	0	0	0	0	1,876	0	0	0	1,906
110	C	Walker Lake Valley - Whiskey Flat Subarea	Mineral		0	0	19	0	72	1,570	0	771	0	0	2	0	0	0	2,434
111	A	Alkali Valley - Northern Part	Mineral		0	0	0	0	0	0	0	0	0	0	0	0	0	0	0
111	B	Alkali Valley - Southern Part	Mineral		0	0	0	0	0	0	0	0	0	0	0	0	0	0	0
112		Mono Valley	Mineral		0	0	0	0	0	0	0	0	0	0	0	0	0	0	0
113		Huntoon Valley	Mineral		0	0	0	0	0	0	0	0	0	0	0	0	10	0	10
114		Teels Marsh Valley	Mineral		1	0	1	0	0	0	0	0	0	0	10	0	1	0	13
115		Adobe Valley	Mineral		0	0	0	0	0	0	0	0	0	0	0	0	0	0	0
116		Queen Valley	Mineral		0	0	1	0	0	0	0	0	0	0	0	0	0	0	1
116		Queen Valley	Esmeralda		0	0	0	0	0	0	0	0	0	0	0	0	0	0	0
117		Fish Lake Valley	Esmeralda	P	16	0	218	0	0	28,894	0	0	1	0	11	181	21	0	29,342
118		Columbus Salt Marsh Valley	Esmeralda		0	0	3	0	0	0	1,541	0	0	0	32	0	1	0	1,577
119		Rhodes Salt Marsh Valley	Mineral		0	0	0	0	0	0	0	0	0	0	0	0	0	300	300
120		Garfield Flat	Mineral		0	0	0	0	0	0	0	0	0	0	0	0	0	0	0
121	A	Soda Spring Valley - Eastern Part	Mineral		6	0	4	6	0	0	0	305	0	0	0	0	2	0	323
121	B	Soda Spring Valley - Western Part	Mineral		0	0	0	0	0	0	0	0	0	0	0	0	0	0	0
122		Gabbs Valley	Nye		0	0	1	0	0	0	5,766	74	0	0	2	0	30	0	5,872
122		Gabbs Valley	Mineral		0	0	8	0	0	4,529	1,072	0	0	0	0	0	42	0	5,651
123		Rawhide Flats	Churchill		0	0	1	0	0	0	0	0	0	0	0	0	27	0	28
124		Fairview Valley	Churchill		0	0	1	0	0	0	0	0	0	0	4	0	8	0	13
125		Stingaree Valley	Churchill		0	0	1	0	0	0	0	0	0	0	0	0	7	0	8
126		Cowkick Valley	Churchill		0	0	1	0	0	0	0	0	0	0	0	0	5	0	6
127		Eastgate Valley Area	Churchill		0	0	1	0	0	0	0	0	0	0	0	0	9	0	10
128		Dixie Valley	Churchill		0	0	18	0	3,828	0	0	0	0	0	218	0	20	262	4,345
128		Dixie Valley	Lander		0	0	0	0	0	0	0	0	0	0	0	0	1	0	1
128		Dixie Valley	Pershing		0	0	2	0	0	5,493	0	0	0	0	0	0	14	0	5,509
129		Buena Vista Valley	Pershing	C	8	0	40	0	0	6,961	498	0	0	0	0	0	16	0	7,523
130		Pleasant Valley	Pershing		0	0	3	0	0	1,104	0	0	0	0	0	0	10	0	1,117
131		Buffalo Valley	Humboldt		0	0	0	0	0	0	0	0	0	0	0	0	16	0	16



Basin Number	Sub	Basin Name	County	Inventory Type	COM	CON	DOM	ENV	IND	IRR	MM	MUN	OTH	PWR	QM	REC	STK	WLD	Total
131		Buffalo Valley	Lander		0	0	1	1,389	0	0	2,801	0	0	0	0	0	6	0	4,198
131		Buffalo Valley	Pershing		0	0	0	0	0	3,083	0	0	0	0	0	0	11	0	3,094
132		Jersey Valley	Lander		0	0	0	0	0	0	0	0	0	0	0	0	0	0	0
132		Jersey Valley	Pershing		0	0	0	0	0	0	0	0	0	0	0	0	10	0	10
133		Edwards Creek Valley	Churchill		11	0	6	0	0	2,438	0	0	0	0	0	0	44	0	2,499
134		Smith Creek Valley	Churchill		0	0	0	0	0	0	0	0	0	0	0	0	0	0	0
134		Smith Creek Valley	Lander		0	0	3	0	0	1,133	0	0	0	0	0	0	7	0	1,143
134		Smith Creek Valley	Nye		0	0	0	0	0	0	0	0	0	0	0	0	0	0	0
135		Ione Valley	Mineral		0	0	1	0	0	0	0	0	0	0	0	0	0	0	1
135		Ione Valley	Nye		0	0	3	0	0	0	0	0	0	0	0	3	9	0	15
136		Monte Cristo Valley	Mineral		0	0	0	0	0	0	0	0	0	0	0	0	3	4	7
137	A	Big Smoky Valley - Tonopah Flat	Esmeralda		0	0	0	0	0	0	0	0	0	0	12	0	42	0	54
137	A	Big Smoky Valley - Tonopah Flat	Nye		0	0	51	0	608	5,581	108	0	0	0	0	0	8	0	6,356
137	B	Big Smoky Valley - Northern Part	Lander	C	2	0	32	0	0	1,965	0	0	0	0	39	0	7	0	2,045
137	B	Big Smoky Valley - Northern Part	Nye	C	28	0	119	0	0	7,720	4,687	0	46	0	253	0	3	0	12,856
138		Grass Valley	Eureka		0	0	1	0	0	0	0	0	0	0	0	0	0	0	1
138		Grass Valley	Lander		0	0	1	0	0	3,168	2	0	0	0	0	0	24	0	3,195
139		Kobeh Valley	Eureka	C	0	0	6	0	0	179	0	0	0	0	0	0	36	0	221
139		Kobeh Valley	Lander	C	0	0	1	0	0	1,680	0	0	0	0	0	0	11	0	1,692
140	A	Monitor Valley - Northern Part	Eureka		0	0	0	0	0	0	0	0	0	0	0	0	0	0	0
140	A	Monitor Valley - Northern Part	Lander		0	0	1	0	0	0	0	0	0	0	0	0	5	0	6
140	A	Monitor Valley - Northern Part	Nye		0	0	3	0	0	71	0	0	0	0	0	0	1	0	75
140	B	Monitor Valley - Southern Part	Nye		0	0	12	0	0	0	4	0	0	0	0	0	6	0	22
141		Ralston Valley	Nye		0	0	22	0	8	0	0	391	0	0	234	0	21	0	676
142		Alkali Spring Valley	Esmeralda		0	0	0	0	0	0	0	41	0	0	33	0	5	0	79
143		Clayton Valley	Esmeralda		0	0	1	0	0	0	8,387	112	0	0	296	0	6	0	8,802
144		Lida Valley	Esmeralda		0	0	3	0	0	0	0	0	0	0	30	0	3	0	36
144		Lida Valley	Nye		0	0	1	0	0	0	0	0	0	0	0	0	1	0	2
145		Stonewall Flat	Nye		0	0	0	0	0	0	0	0	0	0	0	0	2	0	2
146		Sarcobatus Flat	Esmeralda		0	0	1	0	0	0	0	0	0	0	0	0	1	0	2
146		Sarcobatus Flat	Nye		0	0	13	0	0	0	0	0	0	0	25	0	11	0	49
147		Gold Flat	Nye		0	0	0	0	0	0	0	0	0	0	380	0	11	0	391
148		Cactus Flat	Nye		0	0	0	0	0	0	0	0	0	0	85	0	5	0	90
149		Stone Cabin Valley	Nye		0	0	3	0	0	9,191	0	0	0	0	630	0	400	0	10,224
150		Little Fish Lake Valley	Nye		0	0	0	0	0	381	0	0	0	0	0	0	50	0	431
151		Antelope Valley	Eureka		0	0	0	0	0	0	0	0	0	0	0	0	177	0	177
151		Antelope Valley	Nye		0	0	1	0	0	620	0	0	0	0	0	0	0	0	621
152		Stevens Basin	Eureka		0	0	0	0	0	0	0	0	0	0	0	0	27	0	27
153		Diamond Valley	Elko	C	0	0	0	0	0	0	0	0	0	0	0	0	0	0	0

Basin Number	Sub	Basin Name	County	Inventory Type	COM	CON	DOM	ENV	IND	IRR	MM	MUN	OTH	PWR	QM	REC	STK	WLD	Total
153		Diamond Valley	Eureka	C	4	0	116	0	0	73,497	282	112	0	0	39	0	20	0	74,069
154		Newark Valley	Eureka	C	0	0	0	0	0	0	0	0	0	0	0	0	0	0	0
154		Newark Valley	White Pine	C	0	0	14	0	14	8,664	3	0	0	0	8	0	6	2	8,711
155	A	Little Smoky Valley - Northern Part	Eureka		0	0	2	0	0	0	0	0	0	0	0	0	2	0	4
155	A	Little Smoky Valley - Northern Part	Nye		0	0	0	0	0	49	0	0	0	0	0	0	3	0	52
155	A	Little Smoky Valley - Northern Part	White Pine		0	0	2	0	0	3,373	0	0	0	0	0	0	1	0	3,376
155	B	Little Smoky Valley - Central Part	Nye		0	0	0	0	0	0	0	0	0	0	0	0	1	0	1
155	C	Little Smoky Valley - Southern Part	Nye		0	0	0	0	0	0	0	0	0	0	0	0	3	0	3
156		Hot Creek Valley	Nye		0	0	6	0	22	2,252	0	0	0	0	6	0	3	0	2,289
157		Kawich Valley	Nye		0	0	0	0	0	0	0	0	0	0	0	0	0	0	0
158	A	Emigrant Valley - Groom Lake Valley	Lincoln		0	0	0	0	0	0	0	0	0	0	0	0	0	0	0
158	A	Emigrant Valley - Groom Lake Valley	Nye		0	0	0	0	0	0	0	0	0	0	0	0	1	0	1
158	B	Emigrant Valley - Papoose Lake Valley	Lincoln		0	0	0	0	0	0	0	0	0	0	0	0	0	0	0
159		Yucca Flat	Nye		0	0	1	0	0	0	0	0	0	0	0	0	0	0	1
160		Frenchman Flat	Nye		0	0	0	0	0	0	0	0	0	0	0	0	0	0	0
161		Indian Springs Valley	Clark	P	3	0	78	0	0	138	0	262	0	0	138	0	0	0	619
162		Pahrump Valley	Clark	P	0	0	10	0	0	0	0	0	0	0	58	0	0	0	68
162		Pahrump Valley	Nye	P	545	4	5,572	0	159	4,881	2	3,820	0	0	602	763	0	0	16,348
163		Mesquite Valley (Sandy Valley)	Clark	P	14	0	443	0	0	34	0	0	0	0	134	0	0	0	625
164	A	Ivanpah Valley - Northern Part	Clark		14	1	93	0	119	0	0	0	0	0	26	0	1	0	254
164	B	Ivanpah Valley - Southern Part	Clark		0	0	2	0	0	0	0	0	0	0	278	0	0	0	280
165		Jean Lake Valley	Clark		0	0	1	0	0	0	149	0	0	0	0	0	0	0	150
166		Hidden Valley	Clark		0	0	0	0	0	0	9	0	0	0	0	0	0	0	9
167		Eldorado Valley	Clark		0	221	9	0	0	0	476	0	0	0	0	0	0	0	706
168		Three Lakes Valley - Northern Part	Lincoln		0	0	0	0	0	0	0	0	0	0	0	0	0	0	0
169	A	Tikapoo Valley - Northern Part	Lincoln		0	0	0	0	0	0	0	0	0	0	0	0	1	0	1
169	B	Tikapoo Valley - Southern Part	Lincoln		0	0	0	0	0	0	0	0	0	0	0	0	0	0	0
170		Penoyer Valley (Sand Spring Valley)	Lincoln	P	9	0	36	0	0	10,813	0	0	0	0	2	0	61	0	10,921
170		Penoyer Valley (Sand Spring Valley)	Nye	P	0	0	5	0	0	0	0	0	0	0	0	0	0	0	5
171		Coal Valley	Lincoln		0	0	1	0	0	0	0	0	0	0	0	0	1	0	2
171		Coal Valley	Nye		0	0	0	0	0	0	0	0	0	0	0	0	0	0	0
172		Garden Valley	Lincoln		0	0	0	0	5	232	0	0	0	0	0	0	4	0	241
172		Garden Valley	Nye		0	0	7	0	0	165	0	0	0	0	0	0	1	0	173
173	A	Railroad Valley - Southern Part	Nye		0	0	1	0	0	3,972	0	0	0	0	0	0	31	0	4,004
173	B	Railroad Valley - Northern Part	Lincoln		0	0	0	0	0	0	0	0	0	0	0	0	0	0	0
173	B	Railroad Valley - Northern Part	Nye		1	0	31	0	72	13,365	0	0	0	0	0	1,994	21	0	15,484
173	B	Railroad Valley - Northern Part	White Pine		0	0	1	0	0	0	0	0	0	0	0	0	1	0	2
174		Jakes Valley	White Pine		0	0	1	0	0	0	0	0	0	0	0	0	3	0	4
175		Long Valley	Elko		0	0	0	0	0	0	0	0	0	0	0	0	0	0	0

Basin Number	Sub	Basin Name	County	Inventory Type	COM	CON	DOM	ENV	IND	IRR	MM	MUN	OTH	PWR	QM	REC	STK	WLD	Total
175		Long Valley	White Pine		0	0	0	0	0	0	492	0	0	0	0	0	27	0	519
176		Ruby Valley	Elko		4	0	111	0	0	12,943	0	0	0	0	24	0	91	1	13,175
176		Ruby Valley	White Pine		0	0	1	0	0	0	201	0	0	0	0	0	2	0	204
177		Clover Valley	Elko	C	27	0	53	0	0	9,290	0	0	0	0	15	0	31	0	9,416
178	A	Butte Valley - Northern Part	Elko		0	0	2	0	0	0	0	0	0	0	0	0	15	0	17
178	B	Butte Valley - Southern Part	Elko		0	0	0	0	0	0	0	0	0	0	0	0	2	0	2
178	B	Butte Valley - Southern Part	White Pine		0	0	0	0	0	0	0	0	0	0	0	0	23	0	23
179		Steptoe Valley	Elko	C	0	0	4	0	0	629	0	0	0	0	0	0	3	0	636
179		Steptoe Valley	White Pine	C	33	0	454	0	38	28,678	11,214	5,180	0	0	1,258	29	26	2	46,911
180		Cave Valley	Lincoln		0	0	4	0	0	0	0	0	0	0	0	0	8	0	12
180		Cave Valley	White Pine		0	0	1	0	0	0	0	0	0	0	0	0	1	0	2
181		Dry Lake Valley	Lincoln		0	0	2	0	0	0	0	0	0	0	0	0	4	0	6
182		Delamar Valley	Lincoln		0	0	0	0	0	0	0	0	0	0	0	0	1	0	1
183		Lake Valley	Lincoln	C	0	0	21	0	0	15,374	0	0	0	0	13	0	33	0	15,441
183		Lake Valley	Nye	C	0	0	1	0	0	0	0	0	0	0	0	0	0	0	1
184		Spring Valley	White Pine		0	0	21	0	0	9,710	20	0	0	0	79	0	41	58	9,929
185		Tippett Valley	White Pine		0	0	0	0	0	306	0	0	0	0	0	0	1	0	307
186	A	Antelope Valley - Southern Part	Elko		0	0	0	0	0	0	3	0	0	0	0	0	2	0	5
186	A	Antelope Valley - Southern Part	White Pine		0	0	0	0	0	0	0	0	0	0	0	0	3	0	3
186	B	Antelope Valley - Northern Part	Elko		0	0	1	0	0	0	0	0	0	0	0	0	18	0	19
187		Goshute Valley	Elko		0	0	8	0	0	0	0	1,993	0	0	52	0	57	0	2,110
188		Independence Valley (Pequop Valley)	Elko		0	0	16	0	0	4,347	0	0	0	0	26	0	45	0	4,434
189	A	Thousand Springs Valley - Herrill Siding Area	Elko		0	0	14	0	0	113	0	0	0	0	0	0	34	0	161
189	B	Thousand Springs Valley - Toano Area	Elko		0	0	8	0	0	0	0	0	0	0	5	0	65	6	85
189	C	Thousand Springs Valley - Rocky Butte Area	Elko		0	0	0	0	0	0	0	0	0	0	0	0	9	0	9
189	D	Thousand Springs Valley - Montello Area	Elko		8	0	50	0	0	5,756	0	0	0	0	0	0	51	0	5,865
190		Grouse Greek Valley	Elko		0	0	0	0	0	0	0	0	0	0	0	0	3	0	3
191		Pilot Creek Valley	Elko		0	7	89	0	0	281	49	0	0	0	0	0	13	0	439
192		Great Salt Lake Desert	Elko		0	0	3	0	0	0	0	0	0	0	0	0	1	0	4
193		Deep Creek Valley	White Pine		0	0	1	0	0	0	0	0	0	0	0	0	0	0	1
194		Pleasant Valley	White Pine		0	0	0	0	0	119	0	0	0	0	0	0	0	0	119
195		Snake Valley	White Pine		9	0	40	0	0	9,201	0	0	0	0	56	0	5	0	9,311
196		Hamlin Valley	Lincoln		0	0	1	0	0	0	0	0	9	0	0	0	39	0	49
197		Escalante Desert	Lincoln		0	0	0	0	0	0	0	0	0	0	0	0	1	0	1
198		Dry Valley	Lincoln	P	0	0	32	0	0	5,243	0	0	0	0	0	7	7	0	5,289
199		Rose Valley	Lincoln	P	0	0	7	0	0	663	0	0	0	0	0	0	0	0	670
200		Eagle Valley	Lincoln		0	0	36	0	0	234	0	0	0	0	4	0	0	0	274
201		Spring Valley	Lincoln		0	0	7	0	0	764	0	0	0	0	9	1	0	0	781
202		Patterson Valley	Lincoln		0	0	30	0	0	3,863	0	260	0	0	4	0	4	1	4,162

Basin Number	Sub	Basin Name	County	Inventory Type	COM	CON	DOM	ENV	IND	IRR	MM	MUN	OTH	PWR	QM	REC	STK	WLD	Total
203		Panaca Valley	Lincoln	P	54	0	129	0	0	14,121	11	278	0	0	41	0	3	0	14,637
204		Clover Valley	Lincoln		0	0	10	0	13	434	0	0	0	0	2	11	22	0	492
205		Lower Meadow Valley Wash	Clark		3	0	14	0	0	1,365	0	0	0	0	0	0	0	0	1,382
205		Lower Meadow Valley Wash	Lincoln		3	0	22	0	0	620	0	440	0	0	0	3	2	0	1,090
206		Kane Springs Valley	Lincoln		0	0	0	0	0	0	0	0	0	0	0	0	0	0	0
207		White River Valley	Lincoln		0	0	0	0	0	0	0	0	0	0	0	0	0	0	0
207		White River Valley	Nye		0	0	44	0	0	1,797	0	0	0	0	10	14	113	0	1,979
207		White River Valley	White Pine		9	0	163	0	0	19,796	0	0	0	0	57	2	149	0	20,176
208		Pahroc Valley	Lincoln		0	0	1	0	0	0	0	0	0	0	0	0	4	0	5
208		Pahroc Valley	Nye		0	0	0	0	0	0	0	0	0	0	0	0	5	0	5
209		Pahrnatag Valley	Lincoln	P	42	0	121	0	0	5,262	0	283	0	0	2	0	12	68	5,790
210		Coyote Spring Valley	Clark	P	0	0	0	0	0	0	0	1,399	0	0	0	0	0	0	1,399
210		Coyote Spring Valley	Lincoln	P	560	0	2	0	0	0	0	0	0	0	0	0	0	0	562
211		Three Lakes Valley - Southern Part	Clark		0	0	2	0	0	0	0	0	0	0	1,015	0	0	0	1,017
212		Las Vegas Valley	Clark	P	1,068	0	4,940	3,153	331	2,071	1,503	46,991	0	0	7,450	5,360	0	143	73,010
213		Colorado River Valley	Clark		6	0	26	0	0	0	27	3	0	0	610	134	3	0	810
214		Piute Valley	Clark		27	0	13	0	0	0	316	209	0	0	273	0	10	0	849
215		Black Mountains Area	Clark	P	0	0	1	0	1,507	0	115	0	0	0	11	0	0	0	1,634
216		Garnet Valley	Clark	P	13	217	0	0	717	0	173	831	0	0	30	0	0	0	1,981
217		Hidden Valley (North)	Clark		0	0	0	0	0	0	0	0	0	0	0	0	0	0	0
218		California Wash	Clark		0	0	16	0	29	0	0	43	0	0	0	0	0	0	88
219		Muddy River Springs Area	Clark		33	0	44	0	535	115	0	2,824	0	0	2	0	0	0	3,553
220		Lower Moapa Valley	Clark		116	0	31	87	0	2,486	220	0	0	0	0	0	0	0	2,940
221		Tule Desert	Lincoln		0	0	0	0	0	0	0	0	0	0	0	0	1	0	1
222		Virgin River Valley	Clark		0	0	23	0	0	0	0	4,614	0	0	177	0	7	0	4,821
222		Virgin River Valley	Lincoln		0	0	0	0	0	0	0	1,952	0	0	0	21	5	0	1,978
223		Gold Butte Area	Clark		0	0	0	0	0	0	1	0	0	0	0	0	0	0	1
224		Greasewood Area	Clark		0	0	0	0	0	0	0	0	0	0	0	0	0	0	0
225		Mercury Valley	Nye		0	0	0	0	0	0	0	0	0	0	0	0	0	0	0
226		Rock Valley	Nye		0	0	0	0	0	0	0	0	0	0	0	0	0	0	0
227	A	Forty Mile Canyon - Jackass Flat	Nye		0	0	2	0	0	0	0	0	0	0	0	0	2	0	4
227	B	Forty Mile Canyon - Buckboard Mesa	Nye		0	0	0	0	0	0	0	0	0	0	0	0	0	0	0
228		Oasis Valley	Nye		6	0	26	0	0	0	5	156	0	0	0	50	1	0	243
229		Crater Flat	Nye		0	0	0	0	0	0	620	0	0	0	0	0	0	0	620
230		Amargosa Desert	Nye	P	2,087	0	252	0	0	13,374	695	125	0	0	384	0	0	5	16,920
231		Grapevine Canyon	Esmeralda		0	0	0	0	0	0	0	0	0	0	0	0	1	0	1
231		Grapevine Canyon	Nye		0	0	0	0	0	0	0	0	0	0	0	0	0	0	0
232		Oriental Wash	Esmeralda		0	0	0	0	0	0	0	0	0	0	0	0	0	0	0
<b>TOTAL</b>					<b>9,578</b>	<b>482</b>	<b>43,527</b>	<b>11,206</b>	<b>25,297</b>	<b>834,087</b>	<b>91,664</b>	<b>126,372</b>	<b>1,343</b>	<b>1,177</b>	<b>36,136</b>	<b>17,011</b>	<b>5,868</b>	<b>4,199</b>	<b>1,207,946</b>